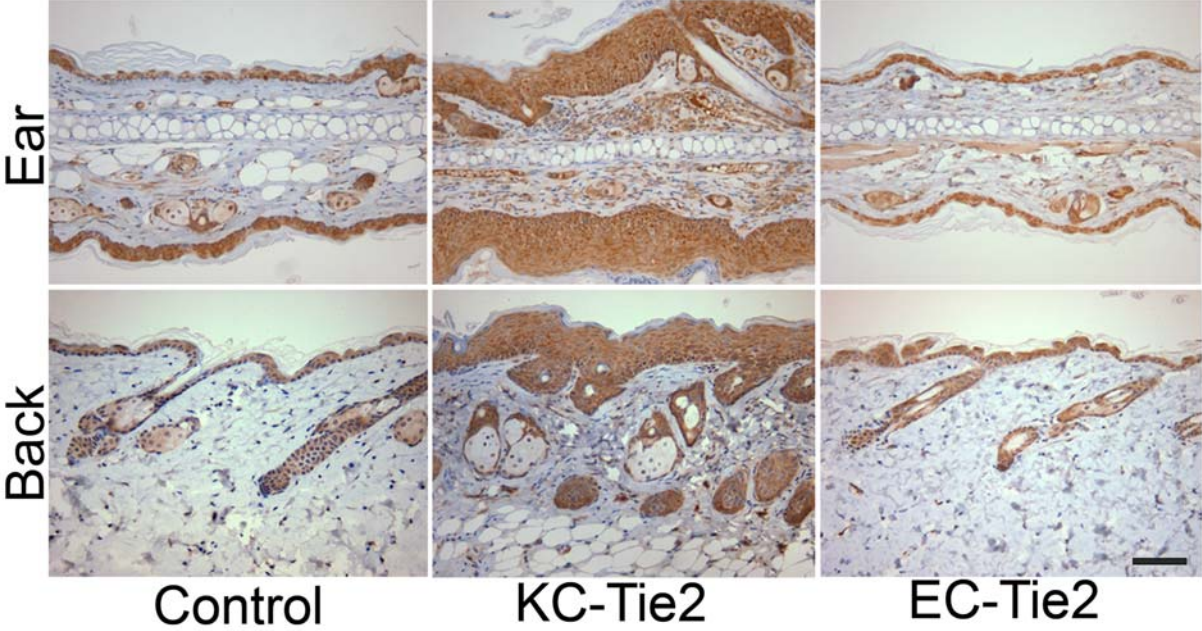


Supplemental Figure 1



**Supplemental Figure 1. VEGF immunostaining of KC-Tie2 and EC-Tie2 mouse skin.** Ear (A-C) and back (D-F) skin taken from control (A, D), KC-Tie2 (B, E) and EC-Tie2 (C, F) mice was stained using antibodies specific for VEGF. Scale bar = 100  $\mu$ m.