

Supporting Information

Redd et al. 10.1073/pnas.0901983106

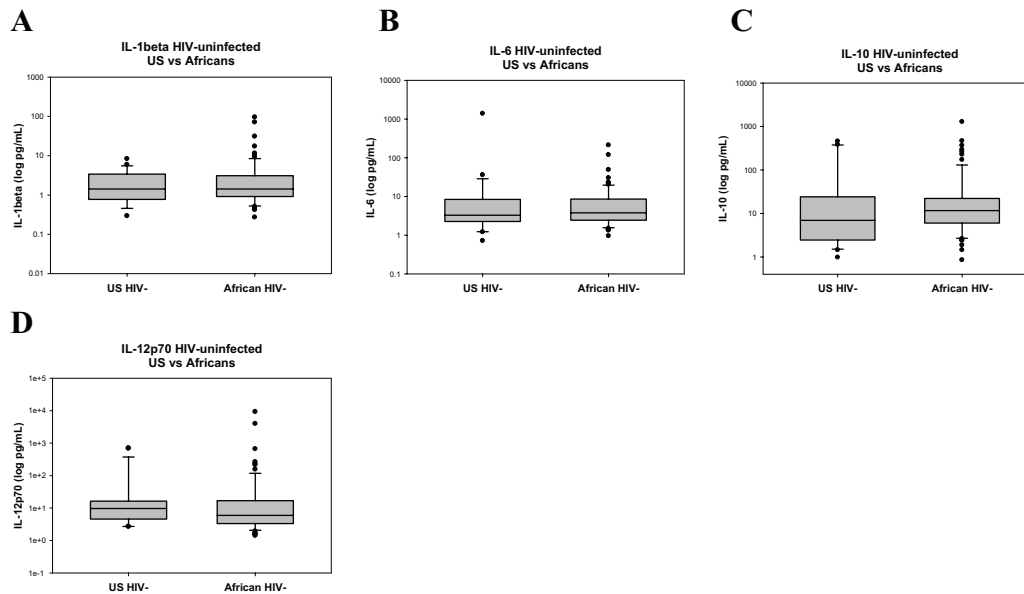


Fig. S1. Baseline circulating cytokine levels of uninfected U.S. and African subjects. Differences in baseline serum levels of IL-1 β (A), IL-6 (B), IL-10 (C), and IL-12p70 (D) between HIV-negative U.S. individuals and uninfected African individuals are shown, with significance indicated where applicable ($P < .05$, Mann-Whitney rank-sum test).

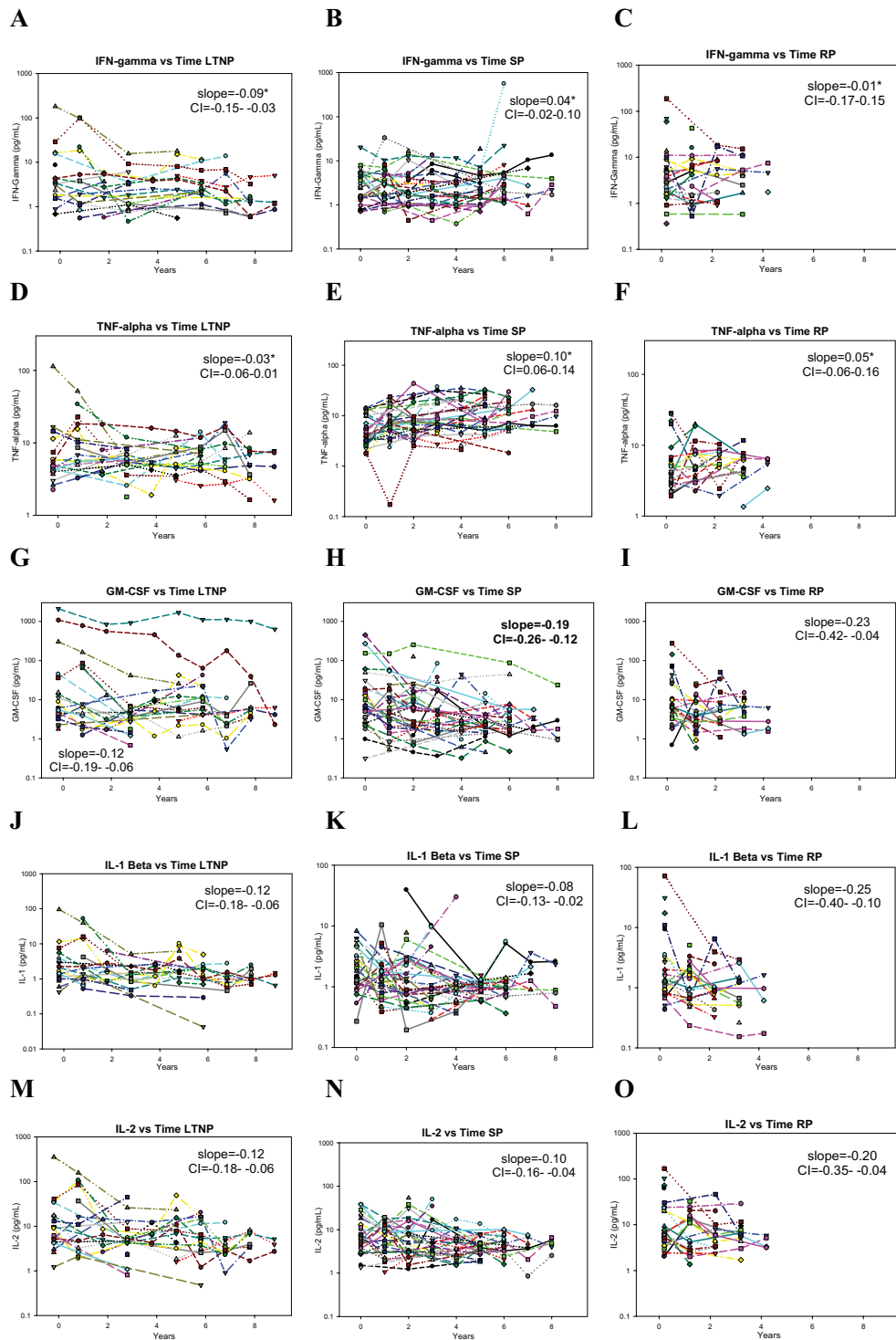


Fig. S2. African patient cytokine profiles according to progression groups. Levels of circulating cytokine levels are shown for the LTNP, SP, and RP groups for IFN- γ (A–C), TNF- α (D–F), GM-CSF (G–I), IL-1 β (J–L), IL-2 (M–O), IL-6 (P–R), IL-8 (S–U), IL-10 (V–Y), and IL-12 p70 (Z–BB) accordingly. Linear multilevel modeling fit slopes (r) in the log scale of each group are shown with the 95% CI and significance noted by an asterisk ($P < .01$).

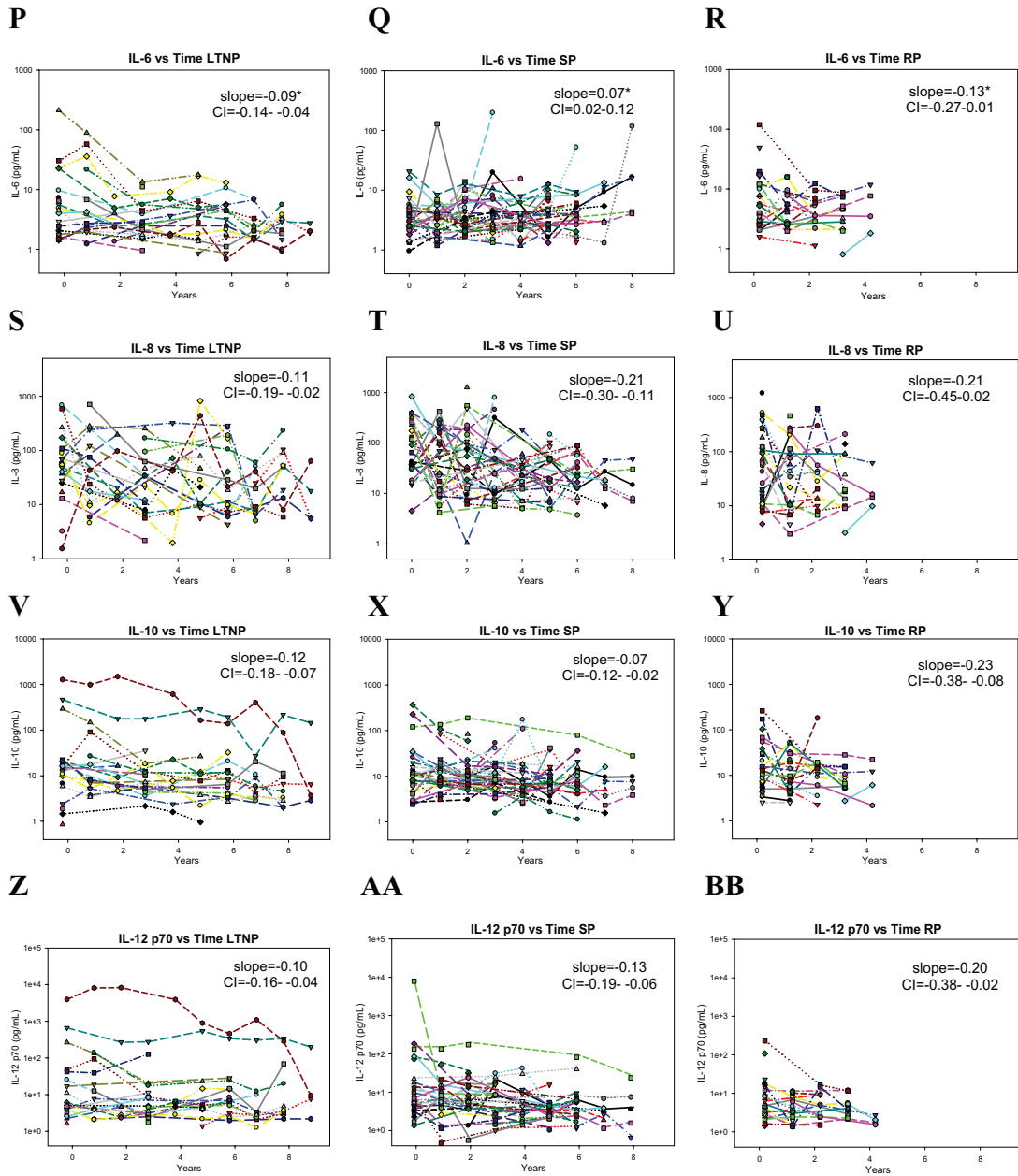


Fig. S2 (continued).

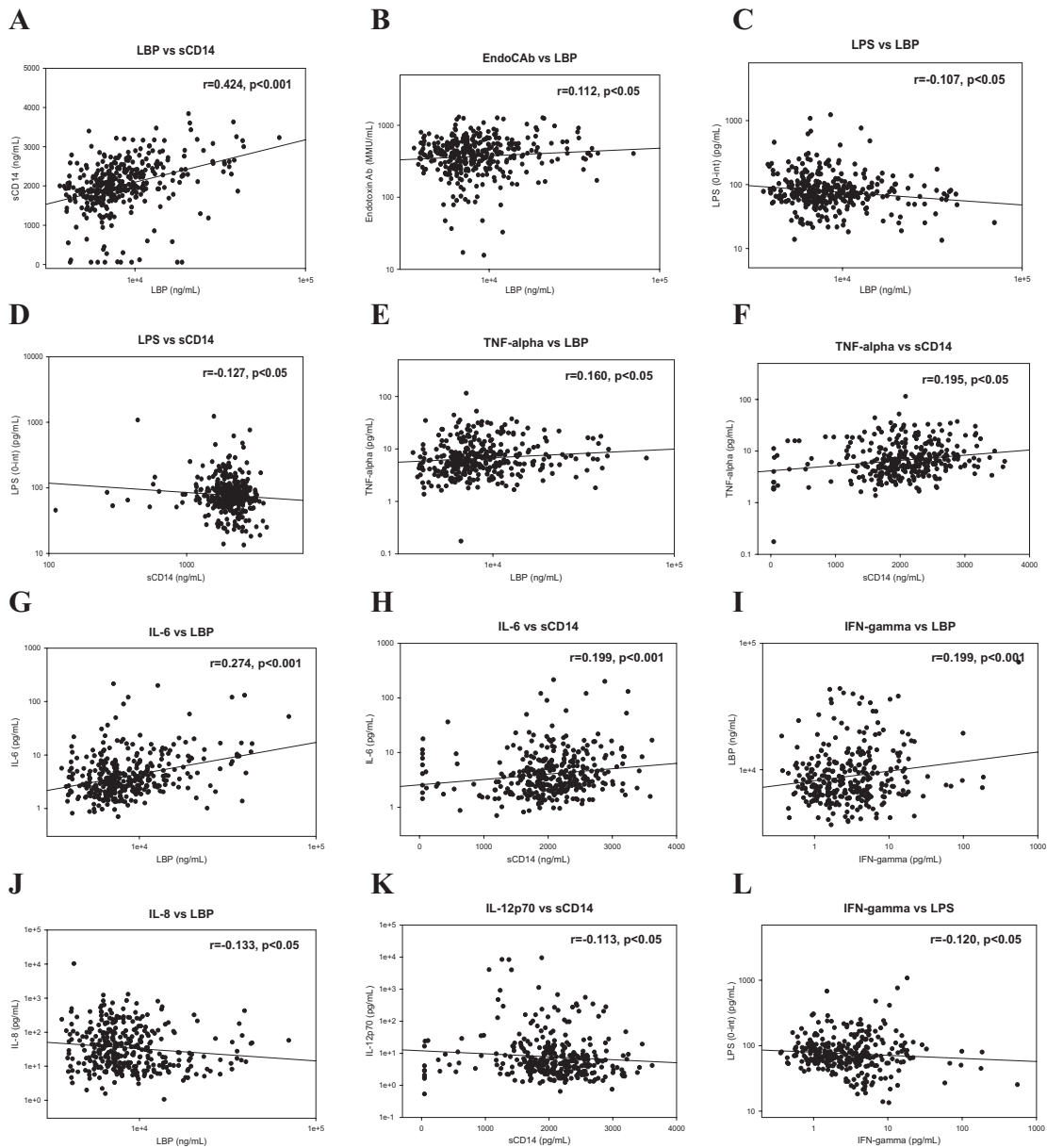


Fig. S3. Significant correlations of microbial translocation markers and inflammatory cytokine levels. Comparisons of (A) LBP and sCD14 levels ($r = 0.424$, $P < .001$), (B) sCD14 and endoCAb ($r = 0.112$, $P < .05$), (C) LPS and LBP ($r = -0.103$, $P < .05$), (D) LPS and sCD14 ($r = -0.122$, $P < .05$), (E) TNF- α and LBP ($r = 0.16$, $P < .01$), (F) TNF- α and sCD14 ($r = 0.195$, $P < .001$), (G) IL-6 and LBP ($r = 0.274$, $P < .001$), (H) IL-6 and sCD14 ($r = 0.199$, $P < .001$), (I) IFN- γ and LBP ($r = 0.199$, $P < .001$), (J) IL-8 and LBP ($r = -0.133$, $P < .05$), (K) IL-12p70 and sCD14 ($r = -0.113$, $P < .05$), and (L) IFN- γ and LPS ($r = -0.120$, $P < .05$) were calculated using Spearman's rank-order analysis.

Table S1. Correlation coefficients (*r*) for all cytokines and microbial translocation markers with corresponding *P* values and numbers of patient samples tested

	TNF- α	IL-8	IL-6	IL-2	IL-1 β	IL-12 p70	IL-10	IFN- γ	GM-CSF	sCD14	LBP	EndoCAb
LPS												
<i>r</i>	0.0802	-0.0147	-0.044	0.0236	0.0152	0.0662	-0.0221	-0.12	0.0295	-0.127	-0.107	0.00597
<i>P</i> value	0.139	0.787	0.417	0.663	0.779	0.222	0.683	0.0269	0.587	0.0164	0.043	0.91
<i>n</i>	342	342	342	342	342	342	342	342	342	359	359	359
EndoCAb												
<i>r</i>	-0.0641	-0.0654	0.0159	0.0221	0.000597	-0.0729	-0.058	-0.0664	-0.0543	0.112	0.0883	
<i>P</i> value	0.237	0.227	0.77	0.684	0.991	0.178	0.284	0.22	0.317	0.0342	0.0938	
<i>n</i>	342	342	342	342	342	342	342	342	342	361	361	
LBP												
<i>r</i>	0.16	-0.133	0.274	0.0283	0.000394	-0.0415	0.0982	0.199	-0.0663	0.424		
<i>P</i> value	0.00311	0.0138	0.001	0.602	0.994	0.444	0.0697	0.001	0.221	0.001		
<i>n</i>	342	342	342	342	342	342	342	342	342	361		
sCD14												
<i>r</i>	0.195	-0.0355	0.199	-0.037	-0.03	-0.113	0.0847	0.0633	-0.0286			
<i>P</i> value	0.001	0.512	0.001	0.495	0.58	0.036	0.118	0.243	0.598			
<i>n</i>	342	342	342	342	342	342	342	342	342			
GM-CSF												
<i>r</i>	-0.0838	0.498	0.293	0.628	0.538	0.68	0.468	0.298				
<i>P</i> value	0.121	0.001	0.001	0.001	0.001	0.001	0.001	0.001				
<i>n</i>	344	344	344	344	344	344	344	344				
IFN-γ												
<i>r</i>	-0.0266	0.278	0.592	0.541	0.45	0.273	0.388					
<i>P</i> value	0.622	0.001	0.001	0.001	0.001	0.001	0.001					
<i>n</i>	344	344	344	344	344	344	344					
IL-10												
<i>r</i>	0.169	0.14	0.283	0.309	0.237	0.476						
<i>P</i> value	0.00165	0.00913	0.001	0.001	0.001	0.001						
<i>n</i>	344	344	344	344	344	344						
IL-12 p70												
<i>r</i>	0.247	0.416	0.194	0.493	0.436							
<i>P</i> value	0.001	0.001	0.001	0.001	0.001							
<i>n</i>	344	344	344	344	344							
IL-1β												
<i>r</i>	0.0662	0.544	0.575	0.725								
<i>P</i> value	0.221	0.001	0.001	0.001								
<i>n</i>	344	344	344	344								
IL-2												
<i>r</i>	-0.0324	0.592	0.588									
<i>P</i> value	0.549	0.001	0.001									
<i>n</i>	344	344	344									
IL-6												
<i>r</i>	0.167	0.348										
<i>P</i> value	0.00197	0.001										
<i>n</i>	344	344										
IL-8												
<i>r</i>	0.133											
<i>P</i> value	0.0135											
<i>n</i>	344											

Significant associations are shown in bold ($P < 0.05$, Spearman's rank-order correlation).