

Supporting Information

Mintern et al. 10.1073/pnas.0901128106

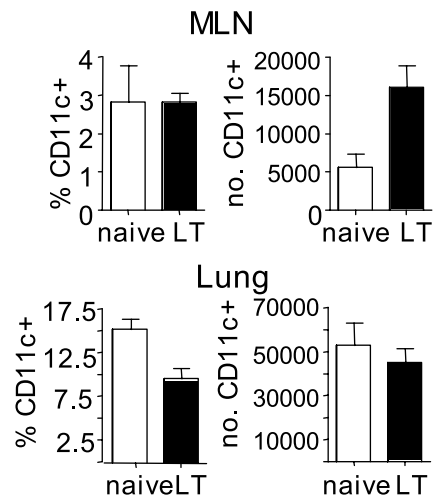


Fig. S1. Comparison of DC numbers between naïve and LT-infected mice. The prevalence of CD11c+ DCs in MLN and lung samples from naïve mice or mice infected i.n. 30–60 d previously with the X31 influenza A virus. Graphs represent mean \pm SEM from 3 independent experiments, with 3 organs pooled for analysis in each case.