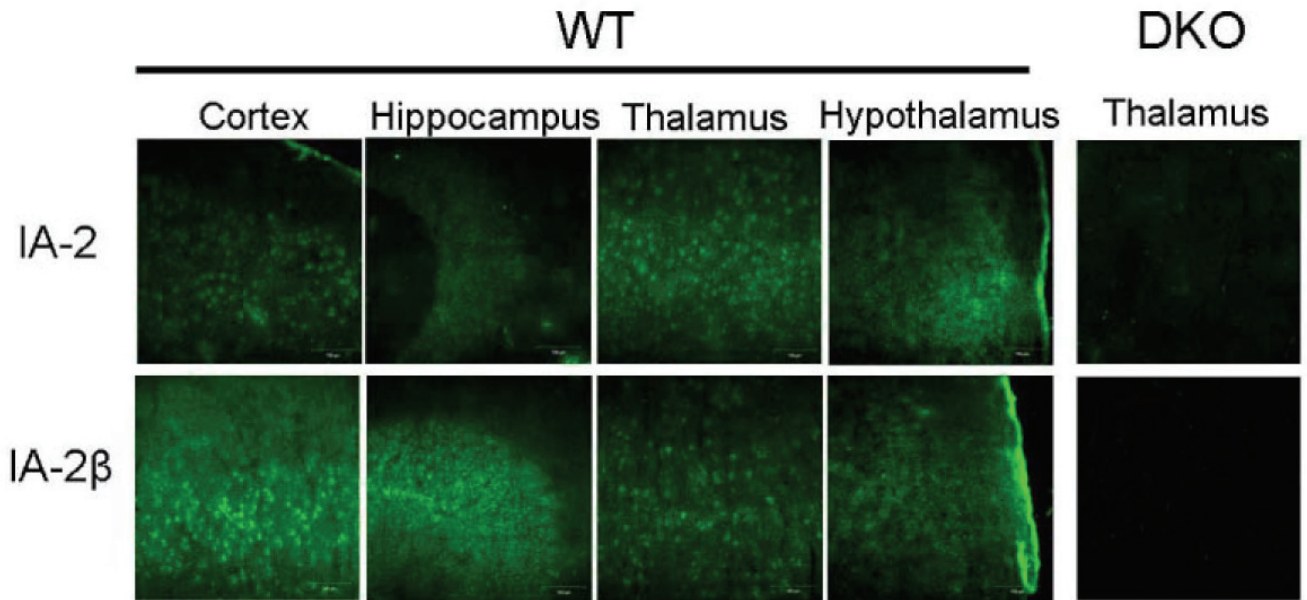
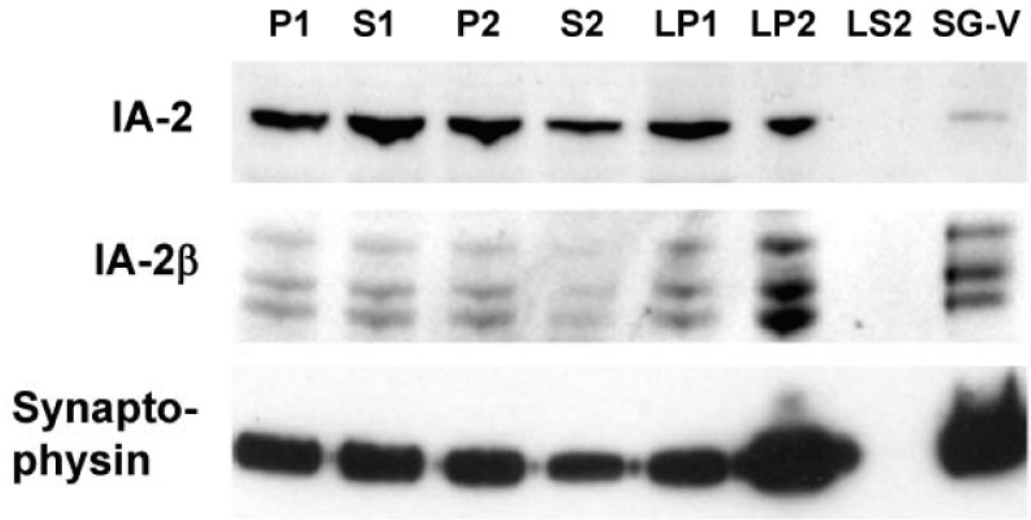


## Supplementary Figures



Supplementary Fig.1



Supplementary Fig.2

## Legend to Supplementary Figures

**Supplementary Fig. 1** Fluorescein-labeled antibodies to IA-2 and IA-2 $\beta$  stain different parts of the brain of WT, but not DKO mice.

**Supplementary Fig. 2** Subcellular fractionation of synaptosomes. SG-V represents the final step in the fractionation and is enriched in synaptic vesicles as shown by the presense of the synaptic vesicle marker synaptophysin (Huttner *et al.*, 1983). IA-2 $\beta$ , but not IA-2, copurifies with SG-V.