

**Resolution of allergic inflammation and AHR is
dependent upon disruption of the T1/ST2-IL-33 pathway**

Jennifer Kearley*, Karen F Buckland* Sara A Mathie and Clare M. Lloyd

Online Data Supplement

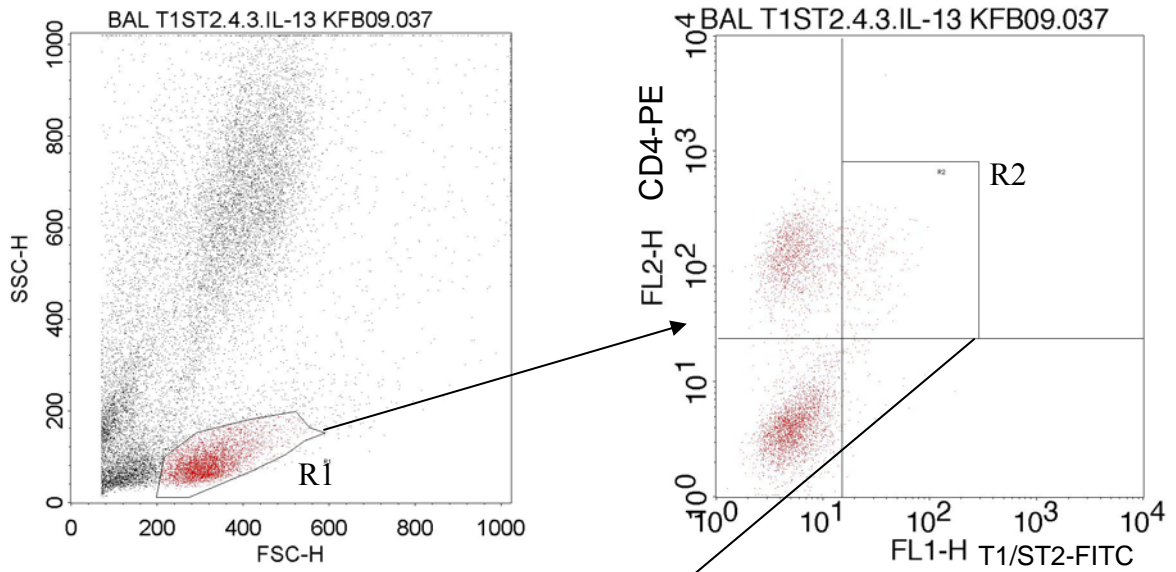
Online data supplement Figure E1

Cells contained within a low FSC/SSC lymphocyte gate were plotted on a dot plot of FL-1 (FITC T1/ST2) versus FL-2 (PE CD4) and double positive cells gated as shown. The total number of double positive cells in the BAL or lung tissue was calculated as shown.

Online data supplement Table E1

Cells were quantified by differential counting of stained cytopins and data is plotted as mean \pm s.e.m; n = 4-9 mice per group.

Supplementary Figure E1



Region	Events	% Gated	% Total
R1	4532	100.00	23.81
R2	218	4.81	1.15

BAL calculation:

$$\text{Total BAL cells (cells/ml)} \times \frac{\text{R2 (\% of total cells)}}{100} \times \text{BAL volume (ml)} = \text{CD4+T1ST2+ (cells/ml)}$$

Lung calculation:

$$\text{Total lung cells (cells/mg)} \times \frac{\text{R2 (\% of total cells)}}{100} = \text{CD4+T1ST2+ (cells/mg)}$$

A. BAL**Supplementary table E1**

Group	Total cells (x10 ⁵ /ml)	Macrophages (x10 ⁵ /ml)	Eosinophils (x10 ⁵ /ml)	Neutrophils (x10 ⁵ /ml)	Lymphocyte/ Mononuclear cells (x10 ⁵ /ml)
BALB/c alum	3.2±0.4	3.0±0.6	0±0	0±0	0.2±0.1
BALB/c OVA 24 hrs	25.9±2.6	6.1±1.1	15.9±1.8	0.1±0.0	5.5±0.9
BALB/c OVA 7 days	11.4±1.2	5.0±0.8	1.3±0.5	0.0±0.0	3.8±0.5
C57BL/6 alum	1.7±0.2	1.7±0.2	0.0±0.1	0.0±0.1	0.0±0.1
C57BL/6 OVA 24 hrs	44.3±4.4	7.7±2.2	29.4±3.7	0.2±0.1	7.9±1.4
C57BL/6 OVA 7 days	6.34±0.8	3.8±0.6	0.6±0.3	0.0±0.0	1.9±0.3
BALB/c alum 7 days + Ig	2.5±0.7	2.5±0.6	0.0±0.1	0.0±0.1	0.0±0.1
BALB/c OVA 7 days + Ig	12.0±1.7	5.6±1.8	2.9±1.2	0.0±0.1	3.6±1.2
BALB/c alum 7 days + αT1/ST2	2.7±0.6	2.6±0.6	0.0±0.1	0.0±0.1	0.0±0.1
BALB/c OVA 7 days + αT1/ST2	8.2±0.9	4.0±0.4	2.0±0.2	0.0±0.1	2.1±0.3

B. Lung tissue

Group	Total cells (x10 ³ /mg)	Macrophages (x10 ³ /mg)	Eosinophils (x10 ³ /mg)	Neutrophils (x10 ³ /mg)	Lymphocyte/ Mononuclear cells (x10 ³ /mg)
BALB/c alum	13.1±2.8	7.9±0.9	0.5±0.1	0.2±0.1	4.7±0.8
BALB/c OVA 24 hrs	49.7±4.0	12.2±1.2	24.1±1.6	0.4±0.1	14.6±1.3
BALB/c OVA 7 days	20.3±1.9	8.4±1.2	2.2±0.5	0.5±0.1	12.5±1.7
C57BL/6 alum	12.4±1.8	7.2±1.0	0.2±0.1	0.0±0.1	5.2±0.8
C57BL/6 OVA 24 hrs	46.6±7.9	12.1±2.1	17.1±2.3	0.6±0.1	17.3±1.7
C57BL/6 OVA 7 days	14.8±2.4	6.3±0.9	1.1±0.2	0.5±0.1	7.1±1.4
BALB/c alum 7 days + Ig	4.0±0.8	0.9±0.4	1.6±0.5	0.2±0.1	1.4±0.2
BALB/c OVA 7 days + Ig	5.0±1.8	0.7±0.3	2.6±1.2	0.3±0.1	1.5±0.5
BALB/c alum 7 days + αT1/ST2	17.5±3.7	3.8±1.1	8.2±1.8	0.6±0.5	4.9±1.2
BALB/c OVA 7 days + αT1/ST2	17.8±7.1	4.9±2.0	6.7±2.7	1.2±1.1	5.0±1.9