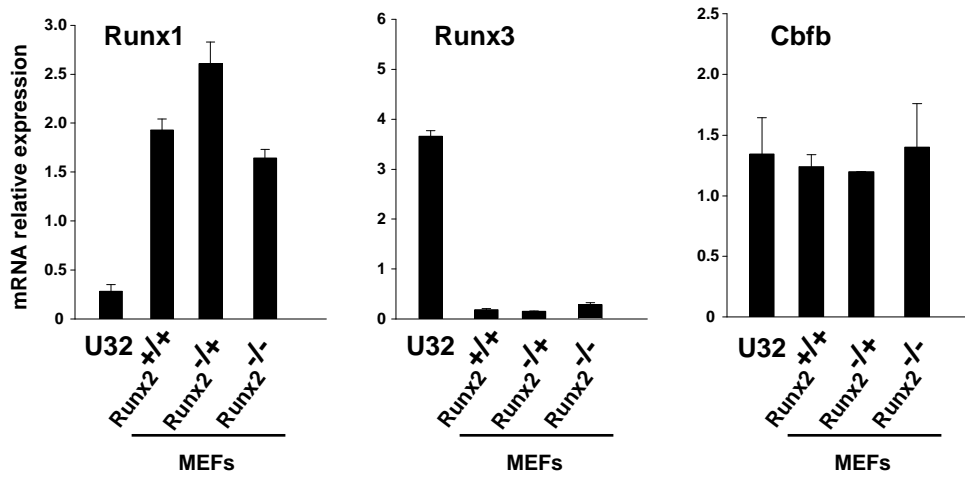
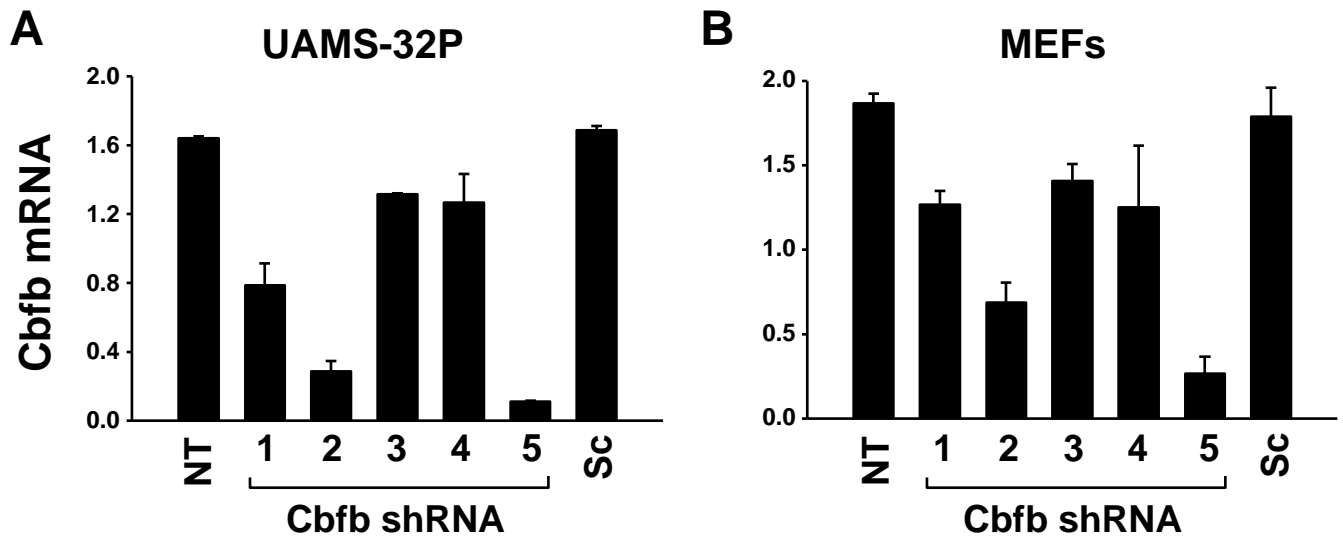


## Supplementary figures



**Figure S1.** Quantitative RT-PCR for Runx1, Runx3, and Cbfb mRNA from MEFs from wild type (+/+), Runx2 haplo-insufficient (-/+), and Runx2-deficient (-/-) mice treated with vehicle or db-cAMP for 24 hours. All values were normalized to ribosomal protein S2 mRNA levels and all treatments were performed in triplicate.



**Figure S2.** Quantitative RT-PCR for *Cbfb* mRNA from **(A)** UAMS-32 cells or **(B)** MEFs from mice that were either not transduced (NT) or transduced with lentivirus expressing a scramble (Sc) shRNA or one of five clones expressing shRNA directed against *Cbfb* mRNA. All values were normalized to ribosomal protein S2 mRNA levels and all treatments were performed in triplicate.