

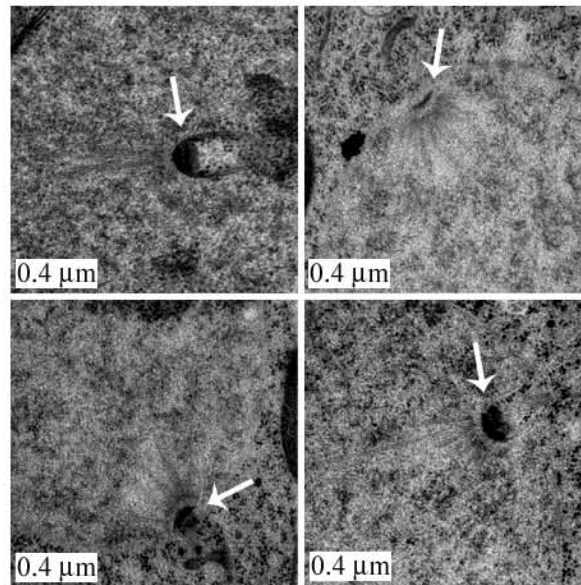
## Supplemental Table S1

Table S1. **Yeast strains used**

<u>Strain Name</u>	<u>Genotype</u>
MW1522	W303 <i>MATa ade2-1 trp1-1 leu2-3,112 ura3-1 his3-11,15 can1-100</i>
EHY37	<i>MATa/MAT <math>\alpha</math> SPC29/spc29 <math>\Delta</math> ::KANMX::TRP1::spc29-T240A</i>
EHY41*	<i>MATa spc29 <math>\Delta</math> ::KANMX his3::SPC29::HIS3</i>
EHY39*	<i>MATa spc29 <math>\Delta</math> ::KANMX his3::spc29-T240A::HIS3</i>
EHY45*	<i>MATa spc29 <math>\Delta</math> ::KANMX his3::spc29-T240D::HIS3</i>
EHY90	<i>MATa ura3::GAL-GFP-SPC29::URA3</i>
EHY91	<i>MATa ura3::GAL-GFP-spc29-T240A::URA3</i>
EHY93	<i>MATa mps1-1; ura3::GAL-GFP-SPC29::URA3</i>

\* : strains contain two tandem copies of the indicated alleles.

## Supplemental Fig. S1



Supplemental Fig. S1. Additional electron micrographs of *spc29-T240A* mitotic spindles. Single thin sections from four additional *spc29-T240A* cells from the experiment pictured in Fig. 2 (I-L) showing monopolar spindles with a single SPB (arrows).