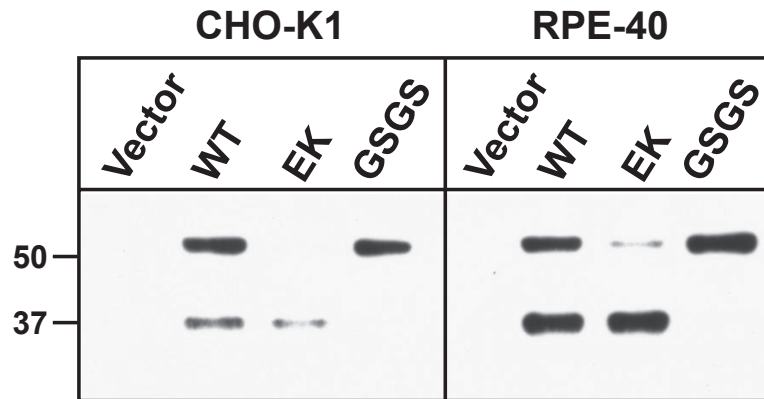
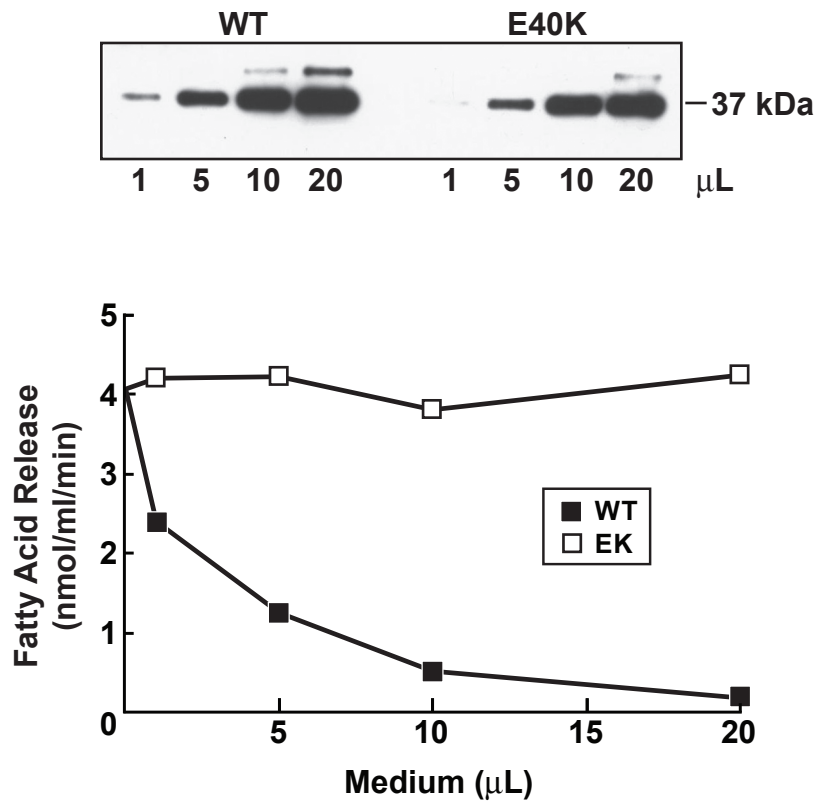


## Supp. 1



Supplemental Figure 1. ANGPTL4 cleavage in normal CHO-K1 and furin-deficient (RPE-40) cells. Normal CHO-K1 cells and furin-deficient RPE-40 cells were transiently transfected with ANGPTL4-WT, -E40K, and -GSGS mutants. 48hrs after transfection, media were harvested. Equivalent amounts of media were used for immunoblotting. Samples were mixed with 4X loading buffer with  $\beta$ -ME and loaded on 12% SDS gels. The gels were immunoblotted with anti-ANGPTL4 antibodies directed against the C-terminus (C-ter). This experiment was repeated three times with similar results.



Supplemental Figure 2. Effect of increasing doses of ANGPTL4 on LPL activity. Conditioned media from HEK-293A cells expressing ANGPTL4-WT and ANGPTL-E40K were concentrated 8-fold and buffer-exchanged into 1X PBS (pH 7.4) using Amicon concentrators. Increasing volumes of concentrated medium were pre-incubated with 7.5 μl mouse post-heparin plasma and LPL activity was assayed as described in Experimental Procedures.