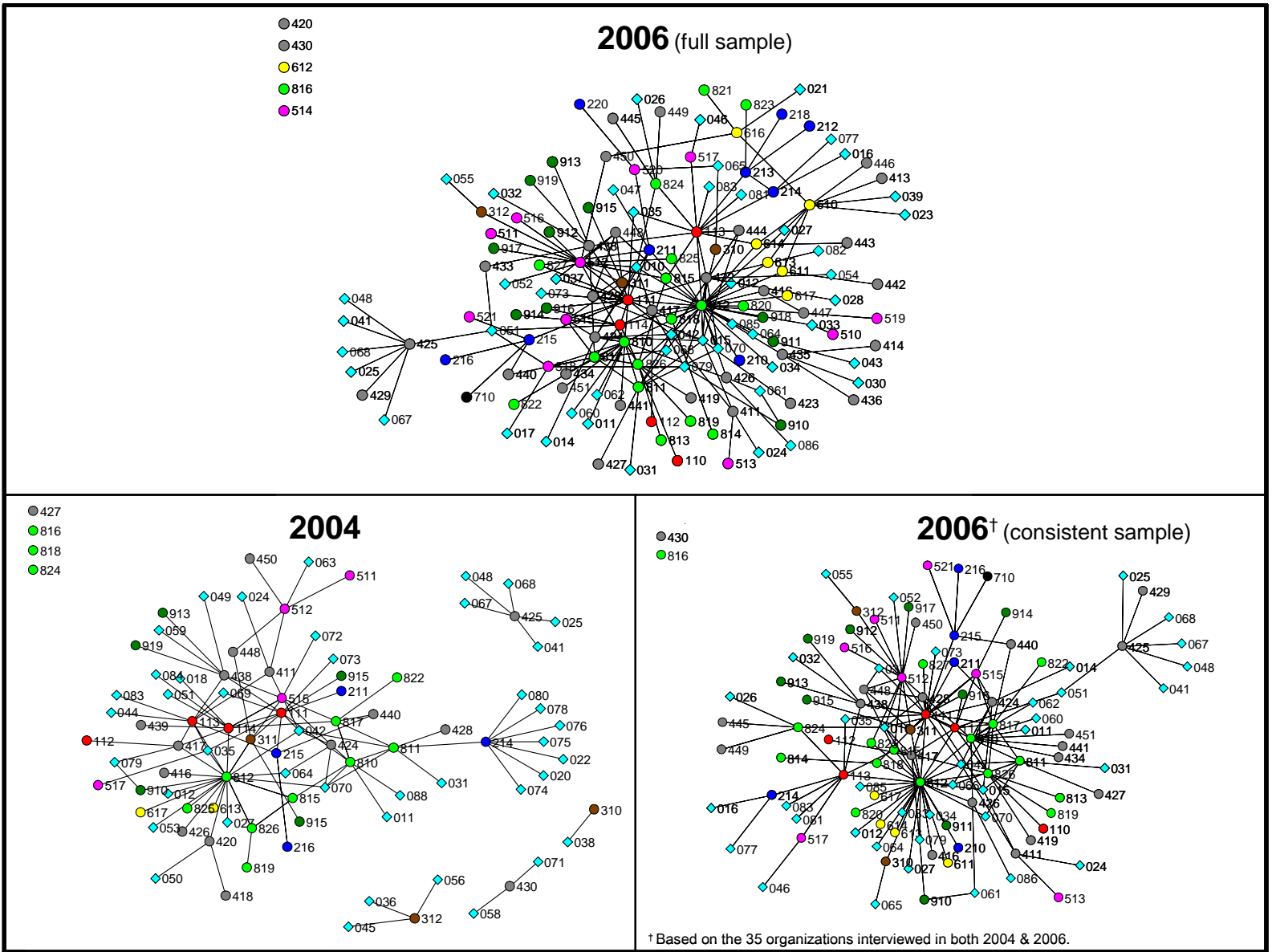


**Manuscript Number: HSR-08-0055**

**APPENDIX A**  
**SUPPLEMENTAL RESULTS**

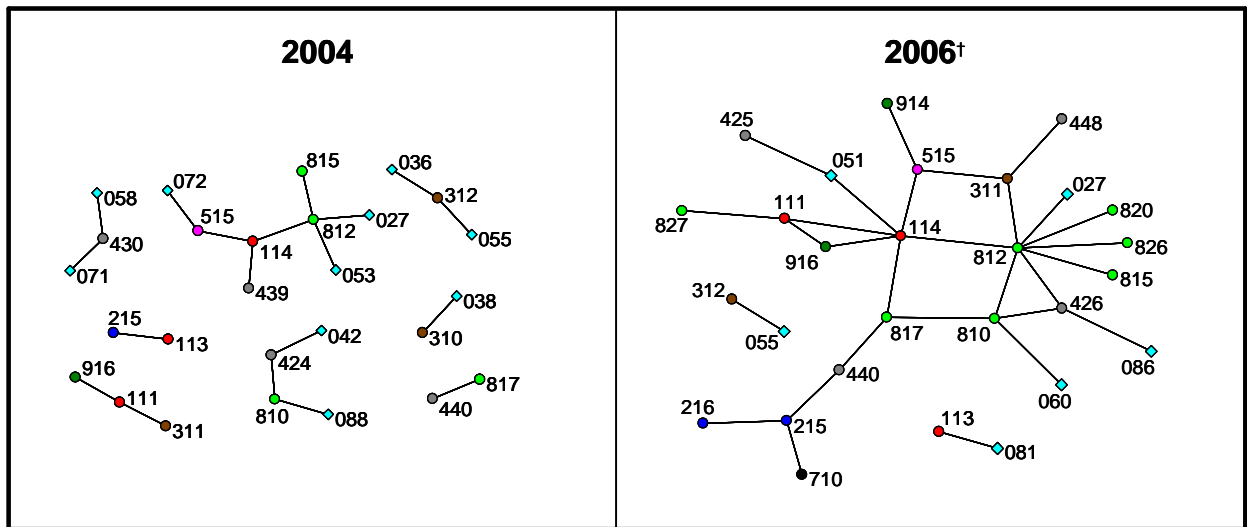


**Figure A.1 Overall Patient Safety Partnership Networks, 2004 and 2006**

**Table A.1 Cross-Tabulation of Partnerships by Organization Type, 2006 (full sample)**

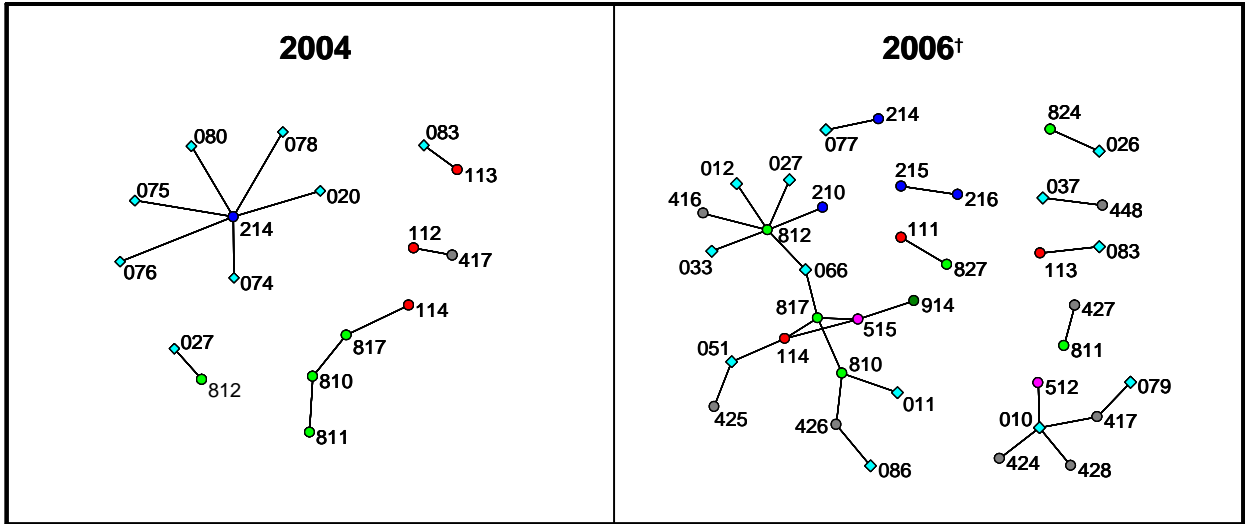
Organization Type of Interviewed Organizations	Organization Type of Reported Partners									
	Accredit- ing/ Standards	Consumer / Purchaser	Founda- tion	Health Industry/ Prof'l	Health Policy/ Improve- ment	Health Informa- tion Techn	Gov't	Academic / Research	Consult- ing	Group Partner- ships
Accrediting/ Standards (n=16)	6.3%	6.3%	0%	0%	6.3%	0%	18.8%	12.5%	0%	50.0%
Consumer/ Purchaser (n=16)	18.8%	31.3%	0%	0%	6.3%	0%	18.8%	0%	6.3%	18.8%
Foundation (n=8)	12.5%	0%	0%	12.5%	25.0%	0%	12.5%	12.5%	0%	25.0%
Health Industry/ Professional (n=62)	14.5%	3.2%	0%	9.7%	4.8%	0%	14.5%	3.2%	0%	50.0%
Health Policy/ Improvement (n=26)	15.4%	7.7%	3.8%	7.7%	7.7%	0%	15.4%	11.5%	0%	30.8%
Health Information Technology (HIT) (n=18)	5.6%	0%	0%	27.8%	0%	27.8%	16.7%	0%	0%	22.2%
Government (n=69)	11.6%	1.4%	1.4%	13.0%	2.9%	5.8%	29.0%	1.4%	0%	33.3%
Academic/Research (n=5)	0%	0%	0%	0%	20.0%	0%	20.0%	0%	0%	60.0%
TOTAL (n=220)	12.3%	5.0%	0.9%	10.5%	5.5%	4.1%	20.0%	4.1%	0.5%	37.3%

Note: *n* represents number of ongoing partnerships as of the time of the interviews. Pearson Chi-Square test:  $\chi^2 = 117.99$  ( $df = 63$ ,  $p < 0.00$ )



**Figure A.2 Research-Related Partnerships, 2004 and 2006**

† Consistent sample based on the 35 organizations interviewed in both 2004 & 2006.



**Figure A.3 Policy Change & Advocacy Partnerships, 2004 and 2006**

† Consistent sample based on the 35 organizations interviewed in both 2004 & 2006.