

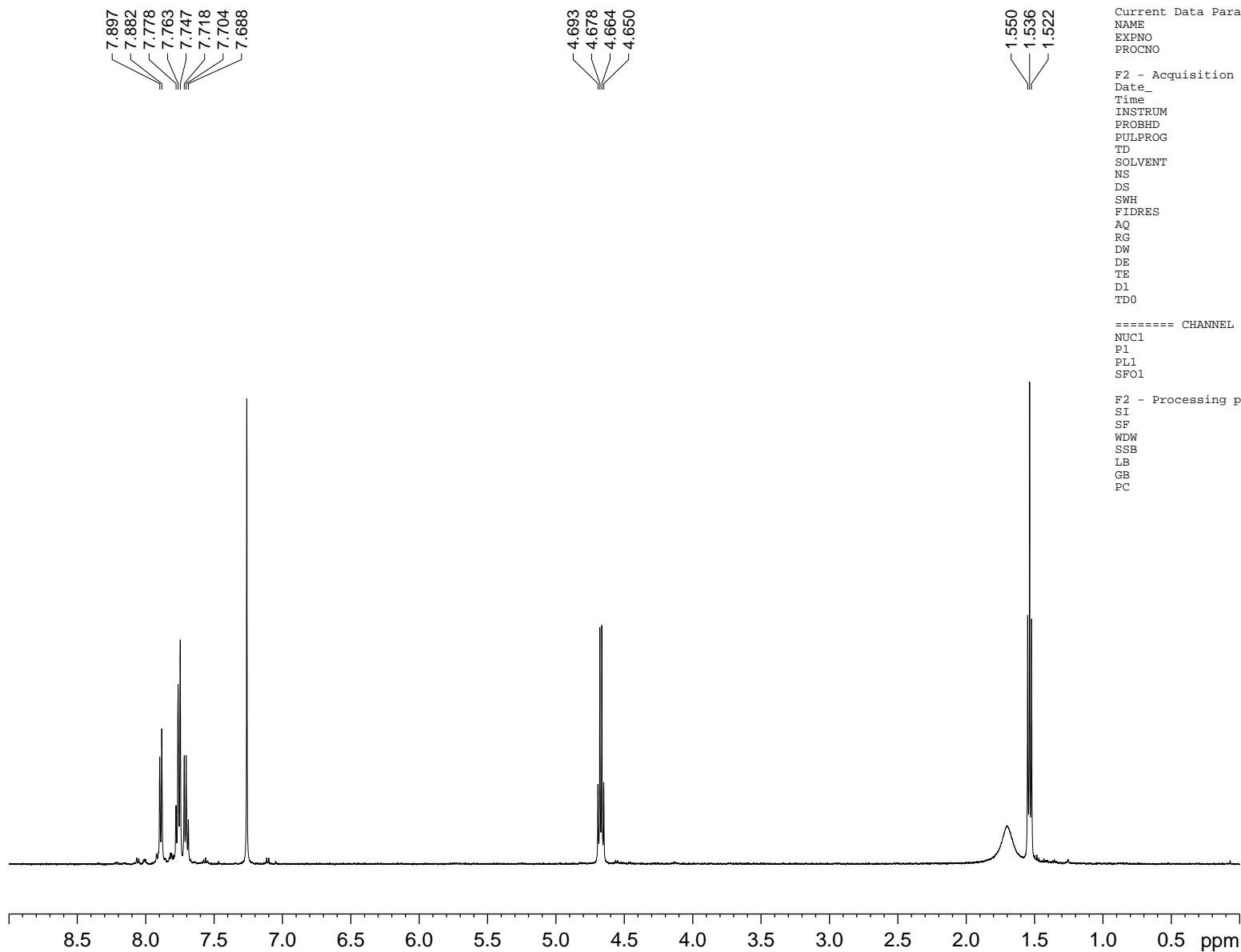
**A Reagent for the Convenient, Solid Phase Synthesis of *N*-Terminal Peptide Hydroxylamines for
Chemoselective Ligations**

Takeo Fukuzumi and Jeffrey W. Bode*

*Roy and Diana Vagelos Laboratories, Department of Chemistry, University of Pennsylvania,
Philadelphia, PA 19104-6323, USA*

bode@sas.upenn.edu

**Supporting Information:
Spectra**



```

Current Data Parameters
NAME          FT118
EXPNO         1
PROCNO        1

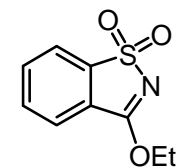
F2 - Acquisition Parameters
Date_         20081004
Time_         10.47
INSTRUM       spect
PROBHD        5 mm DUL D/1H-
PULPROG       zg30
TD            65536
SOLVENT       CDCl3
NS            8
DS            2
SWH           7002.801 Hz
FIDRES        0.106854 Hz
AQ            4.6793203 sec
RG            1030
DW            71.400 usec
DE            6.50 usec
TE            300.0 K
D1            1.00000000 sec
TD0           1
  
```

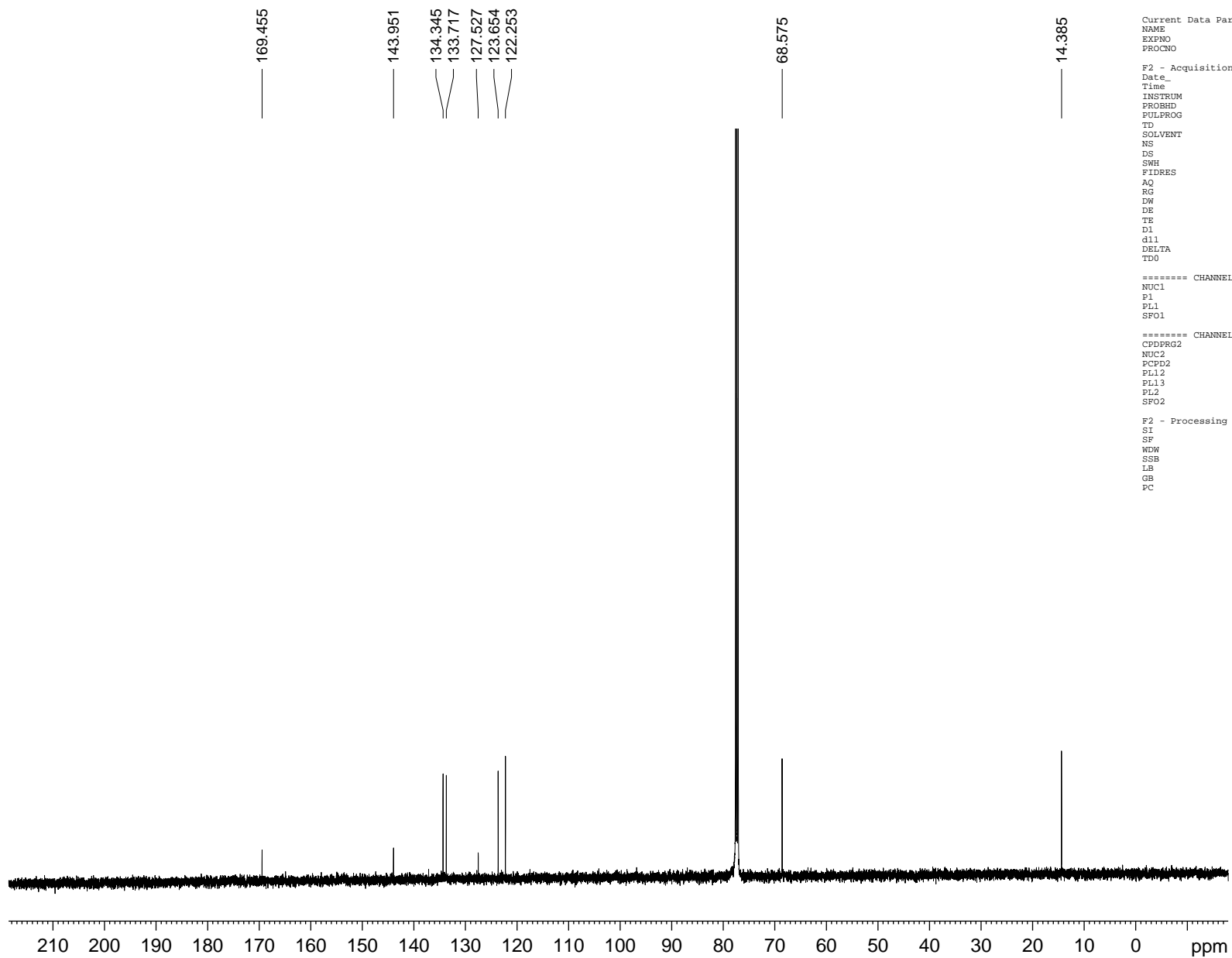
```

===== CHANNEL f1 =====
NUC1          1H
P1            10.00 usec
PL1           -2.00 dB
SFO1         500.3932525 MHz
  
```

```

F2 - Processing parameters
SI            32768
SF            500.3900160 MHz
WDW           EM
SSB           0
LB            0.30 Hz
GB            0
PC            1.00
  
```





```

Current Data Parameters
NAME FT118
EXPNO 2
PROCNO 1

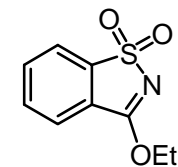
F2 - Acquisition Parameters
Date_ 20081004
Time 12.03
INSTRUM spect
PROBHD 5 mm DUL D/1H-
PULPROG zgpg30
TD 65536
SOLVENT CDCl3
NS 1407
DS 4
SWH 29761.904 Hz
FIDRES 0.454131 Hz
AQ 1.1010548 sec
RG 456
DW 16.800 usec
DE 6.50 usec
TE 298.3 K
D1 2.00000000 sec
d11 0.03000000 sec
DELTA 1.89999998 sec
TDO 1

===== CHANNEL f1 =====
NUC1 13C
P1 10.00 usec
PL1 0.00 dB
SFO1 125.8357479 MHz

===== CHANNEL f2 =====
CPDPRG2 waltz16
NUC2 1H
PCPD2 60.00 usec
PL12 13.56 dB
PL13 120.00 dB
PL2 -2.00 dB
SFO2 500.3920016 MHz

F2 - Processing parameters
SI 32768
SF 125.8231236 MHz
WDW EM
SSB 0
LB 1.00 Hz
GB 0
PC 1.40

```



Current Data Parameters

NAME FT351
EXPNO 2
PROCNO 1

F2 - Acquisition Parameters

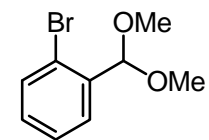
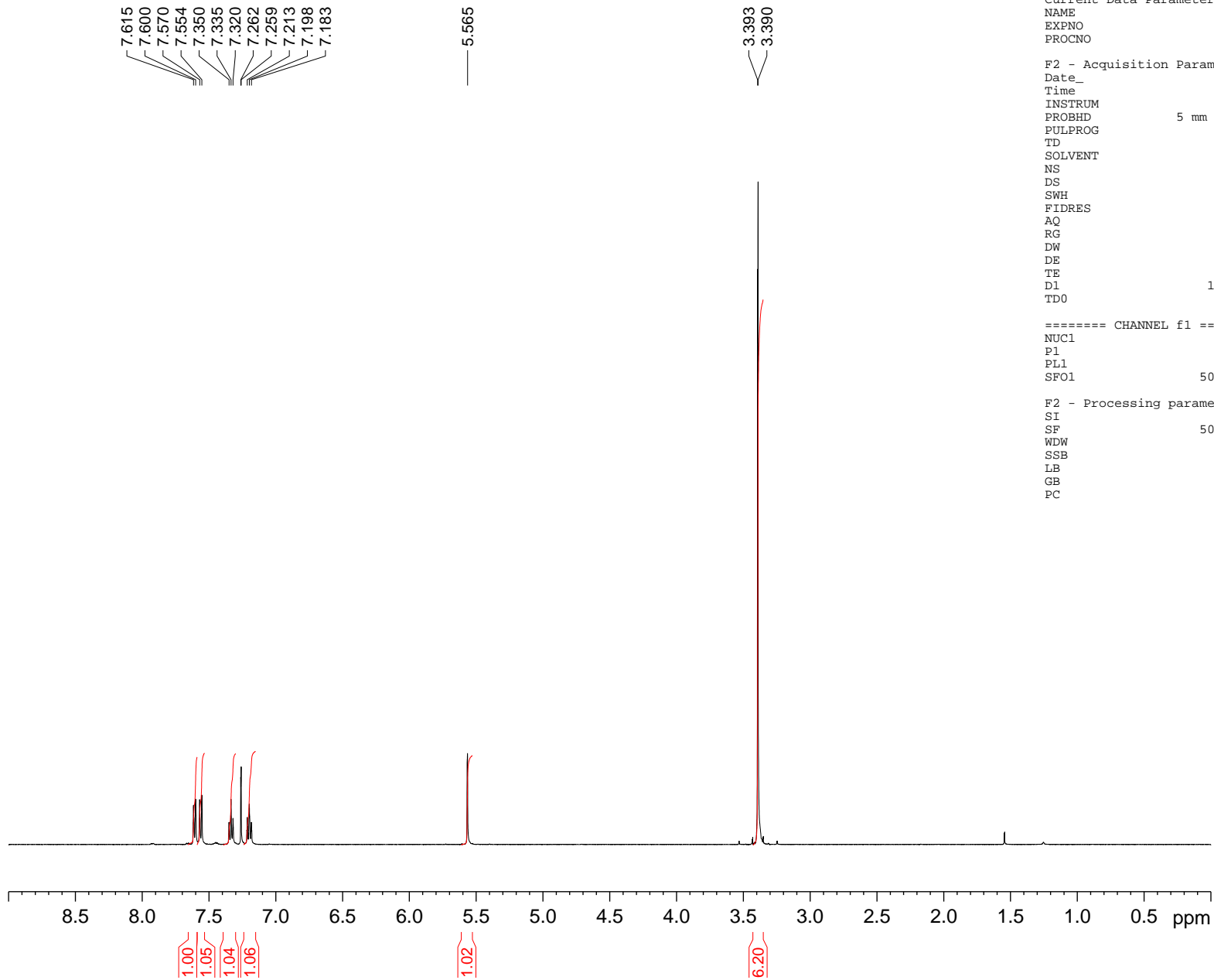
Date_ 20080224
Time 18.14
INSTRUM spect
PROBHD 5 mm PABBO BB-
PULPROG zg30
TD 65536
SOLVENT CDCl3
NS 8
DS 2
SWH 7002.801 Hz
FIDRES 0.106854 Hz
AQ 4.6793203 sec
RG 912
DW 71.400 usec
DE 6.50 usec
TE 296.9 K
D1 1.0000000 sec
TD0 1

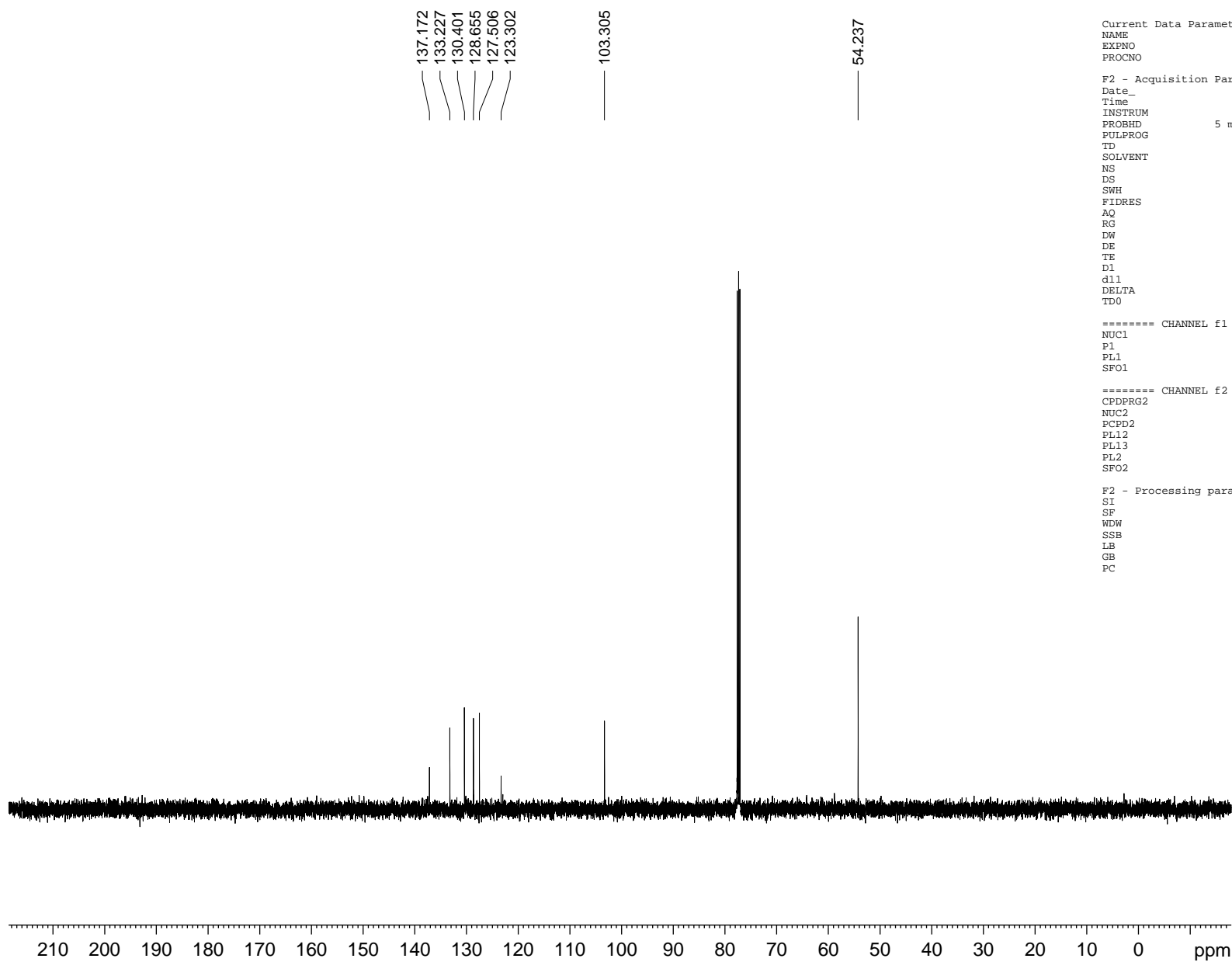
==== CHANNEL f1 =====

NUC1 1H
P1 10.76 usec
PL1 0.00 dB
SF01 500.3932525 MHz

F2 - Processing parameters

SI 32768
SF 500.3900160 MHz
WDW EM
SSB 0
LB 0.30 Hz
GB 0
PC 1.00





```

Current Data Parameters
NAME FT351
EXPNO 5
PROCNO 1

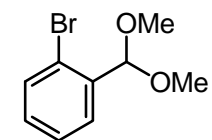
F2 - Acquisition Parameters
Date_ 20081022
Time 15.11
INSTRUM spect
PROBHD 5 mm PABBO BB-
PULPROG zgpg30
TD 65536
SOLVENT CDCl3
NS 137
DS 4
SWH 29761.904 Hz
FIDRES 0.454131 Hz
AQ 1.1010548 sec
RG 456
DW 16.800 usec
DE 6.50 usec
TE 297.6 K
D1 2.00000000 sec
d11 0.03000000 sec
DELTA 1.89999998 sec
TDO 1

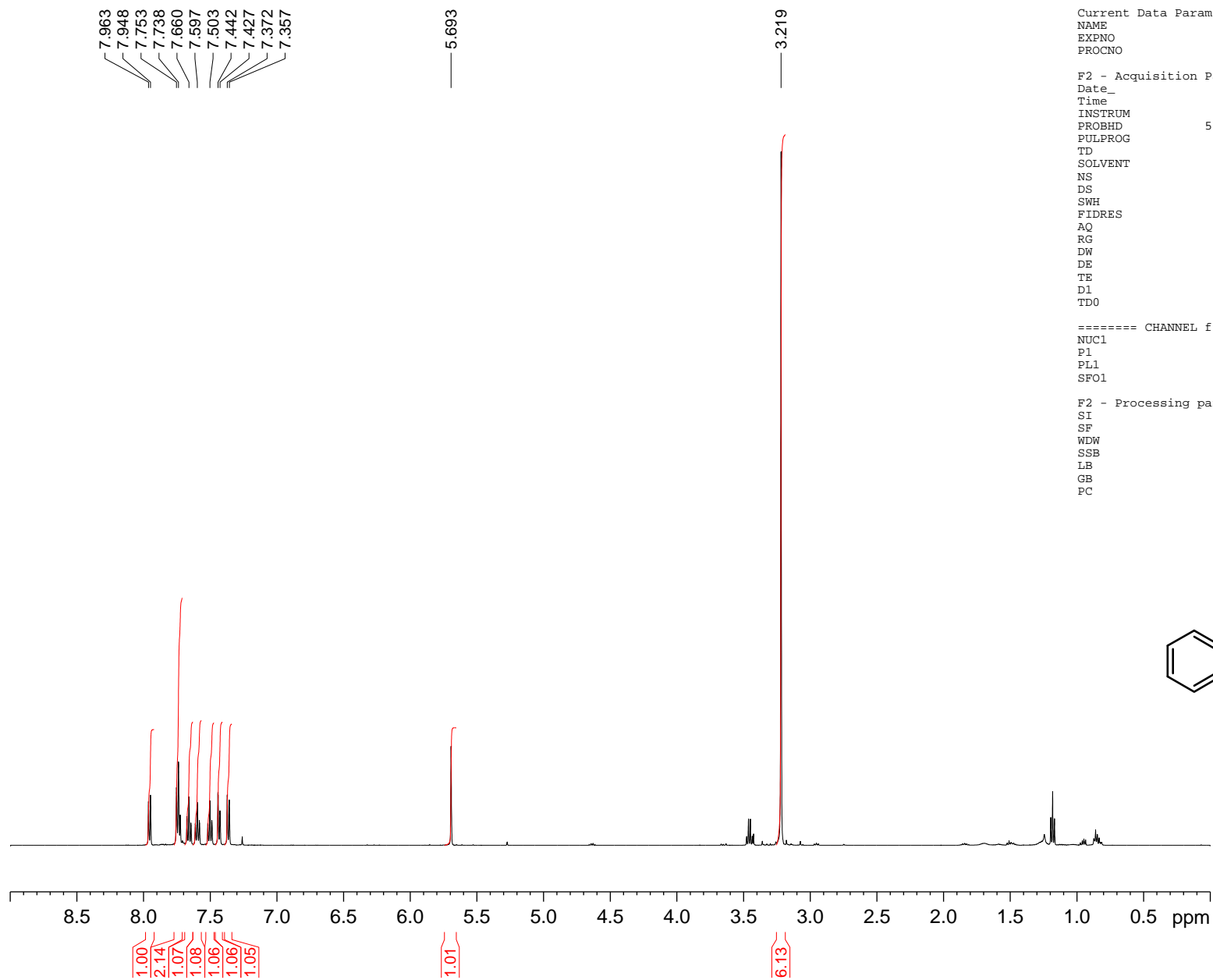
===== CHANNEL f1 =====
NUC1 13C
P1 7.50 usec
PL1 1.00 dB
SFO1 125.8357479 MHz

===== CHANNEL f2 =====
CPDPRG2 waltz16
NUC2 1H
PCPD2 80.00 usec
PL12 17.43 dB
PL13 18.43 dB
PL2 0.00 dB
SFO2 500.3920016 MHz

F2 - Processing parameters
SI 32768
SF 125.8231264 MHz
WDW EM
SSB 0
LB 1.00 Hz
GB 0
PC 1.40

```





```

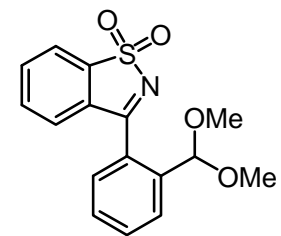
Current Data Parameters
NAME          FT569
EXPNO         2
PROCNO        1

F2 - Acquisition Parameters
Date_         20080922
Time          10.54
INSTRUM       spect
PROBHD        5 mm PABBO BB-
PULPROG       zg30
TD            65536
SOLVENT       CDCl3
NS            8
DS            2
SWH           7002.801 Hz
FIDRES        0.106854 Hz
AQ            4.6793203 sec
RG            71.8
DW            71.400 usec
DE            6.50 usec
TE            297.5 K
D1            1.00000000 sec
TD0           1

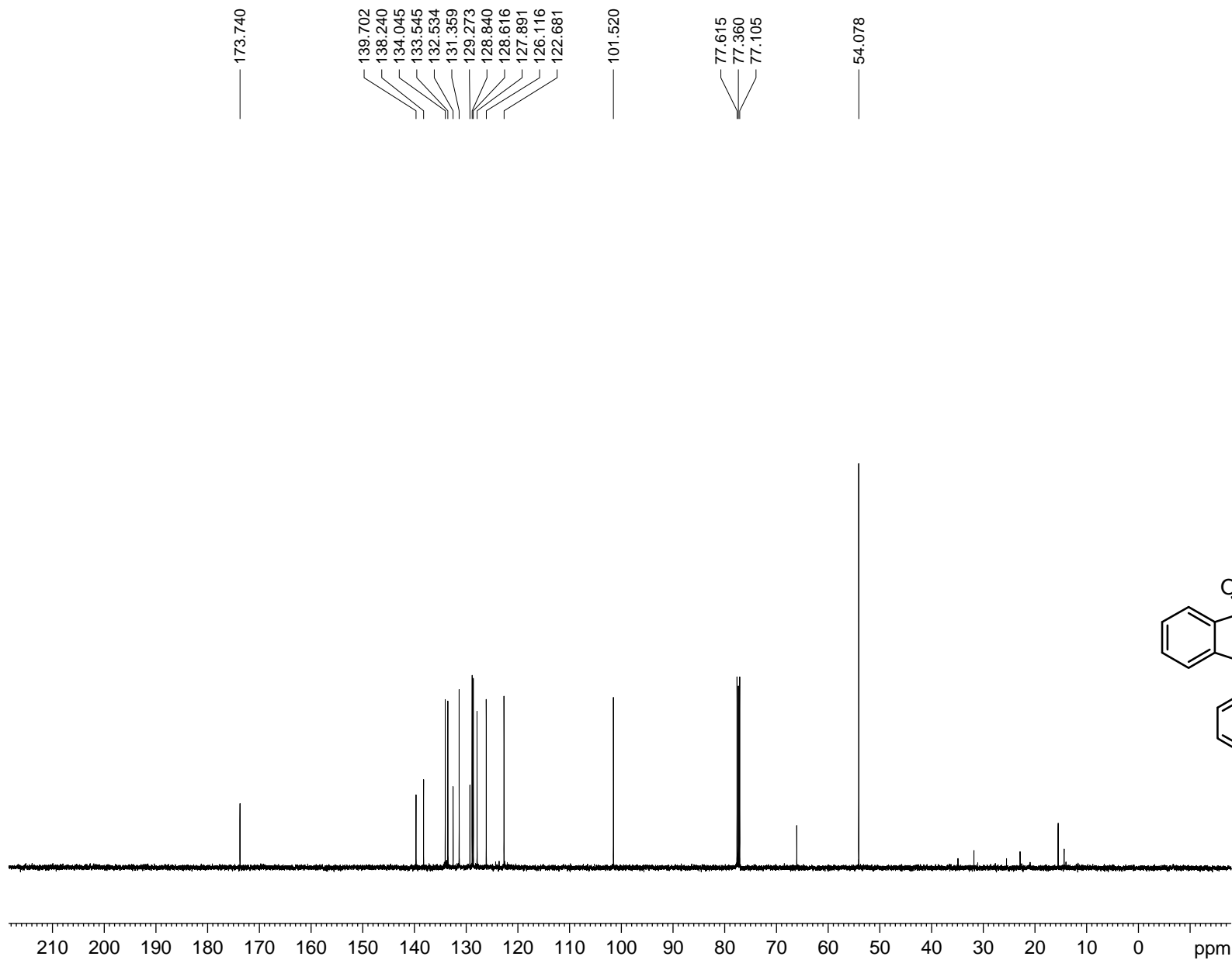
===== CHANNEL f1 =====
NUC1          1H
P1            10.76 usec
PL1           0.00 dB
SFO1          500.3932525 MHz

F2 - Processing parameters
SI            32768
SF            500.3900160 MHz
WDW           EM
SSB           0
LB            0.30 Hz
GB            0
PC            1.00

```



FT569 columned



```

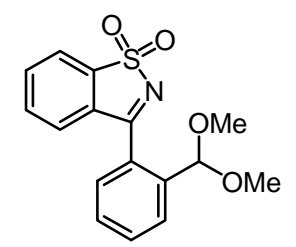
Current Data Parameters
NAME FT569
EXPNO 1
PROCNO 1

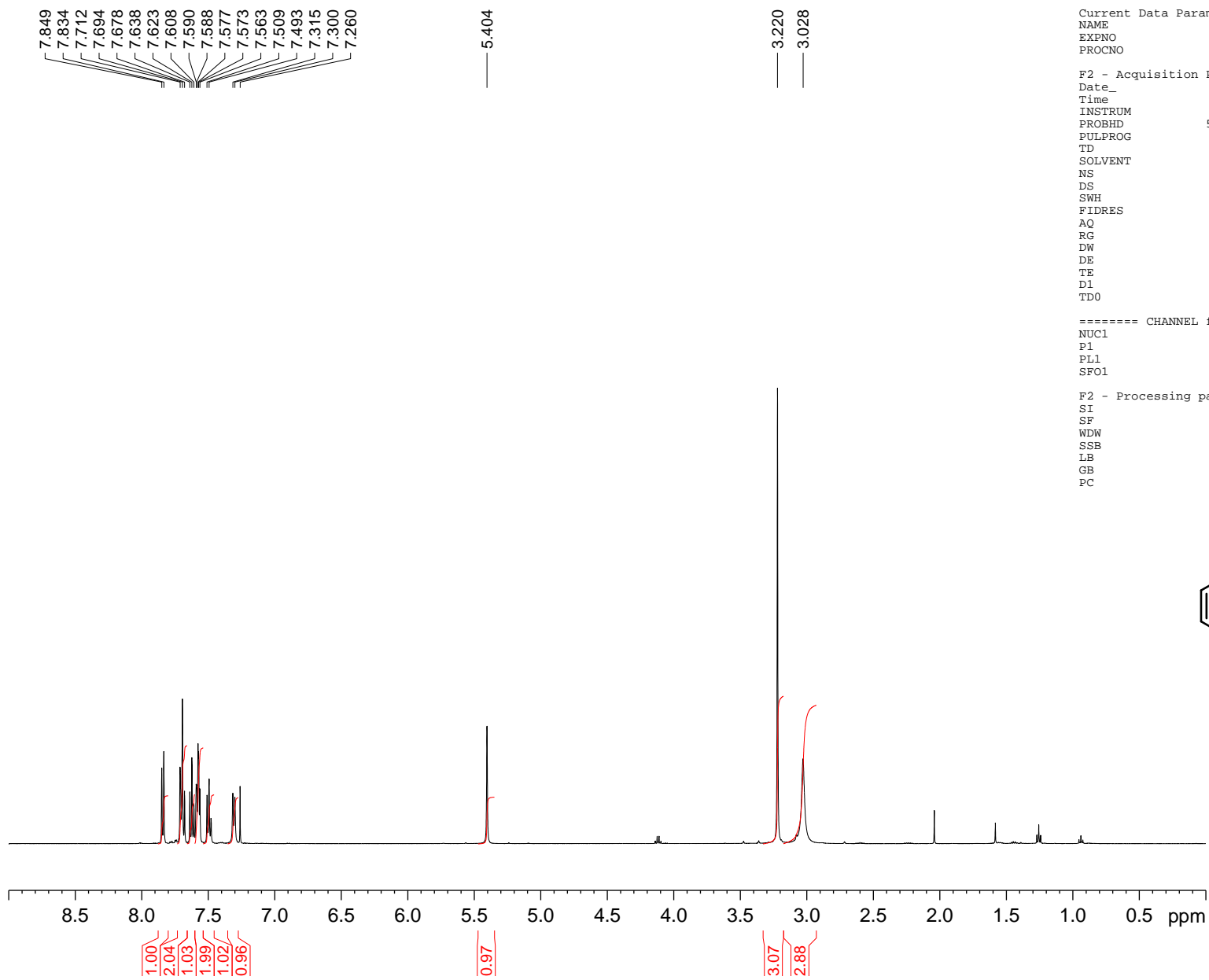
F2 - Acquisition Parameters
Date_ 20080922
Time 10.59
INSTRUM spect
PROBHD 5 mm PABBO BB-
PULPROG zgpg30
TD 65536
SOLVENT CDCl3
NS 4
DS 4
SWH 29761.904 Hz
FIDRES 0.454131 Hz
AQ 1.1010548 sec
RG 656
DW 16.800 usec
DE 6.50 usec
TE 298.2 K
D1 2.0000000 sec
d11 0.0300000 sec
DELTA 1.8999998 sec
TDS 1

***** CHANNEL f1 *****
NUC1 13C
P1 7.50 usec
PL1 1.00 dB
SFO1 125.8317479 MHz

***** CHANNEL f2 *****
CPDPRG2 waltz16
NUC2 1H
PCPD2 80.00 usec
PL12 17.43 dB
PL13 18.43 dB
PL2 0.00 dB
SFO2 500.3920016 MHz

F2 Processing parameters
SI 32768
SF 125.8231377 MHz
WDW EM
SSB EM
LB 1.00 Hz
GB 0
PC 1.40
    
```





```

Current Data Parameters
NAME                FT595
EXPNO               1
PROCNO             1

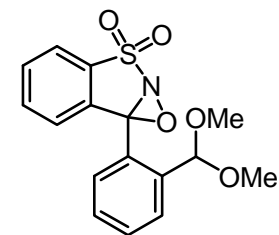
F2 - Acquisition Parameters
Date_              20081024
Time              16.18
INSTRUM           spect
PROBHD            5 mm PABBO BB-
PULPROG          zg30
TD                65536
SOLVENT          CDCl3
NS                8
DS                2
SWH              7002.801 Hz
FIDRES          0.106854 Hz
AQ              4.6793203 sec
RG              203
DW              71.400 usec
DE              6.50 usec
TE              297.3 K
D1              1.00000000 sec
TD0             1
  
```

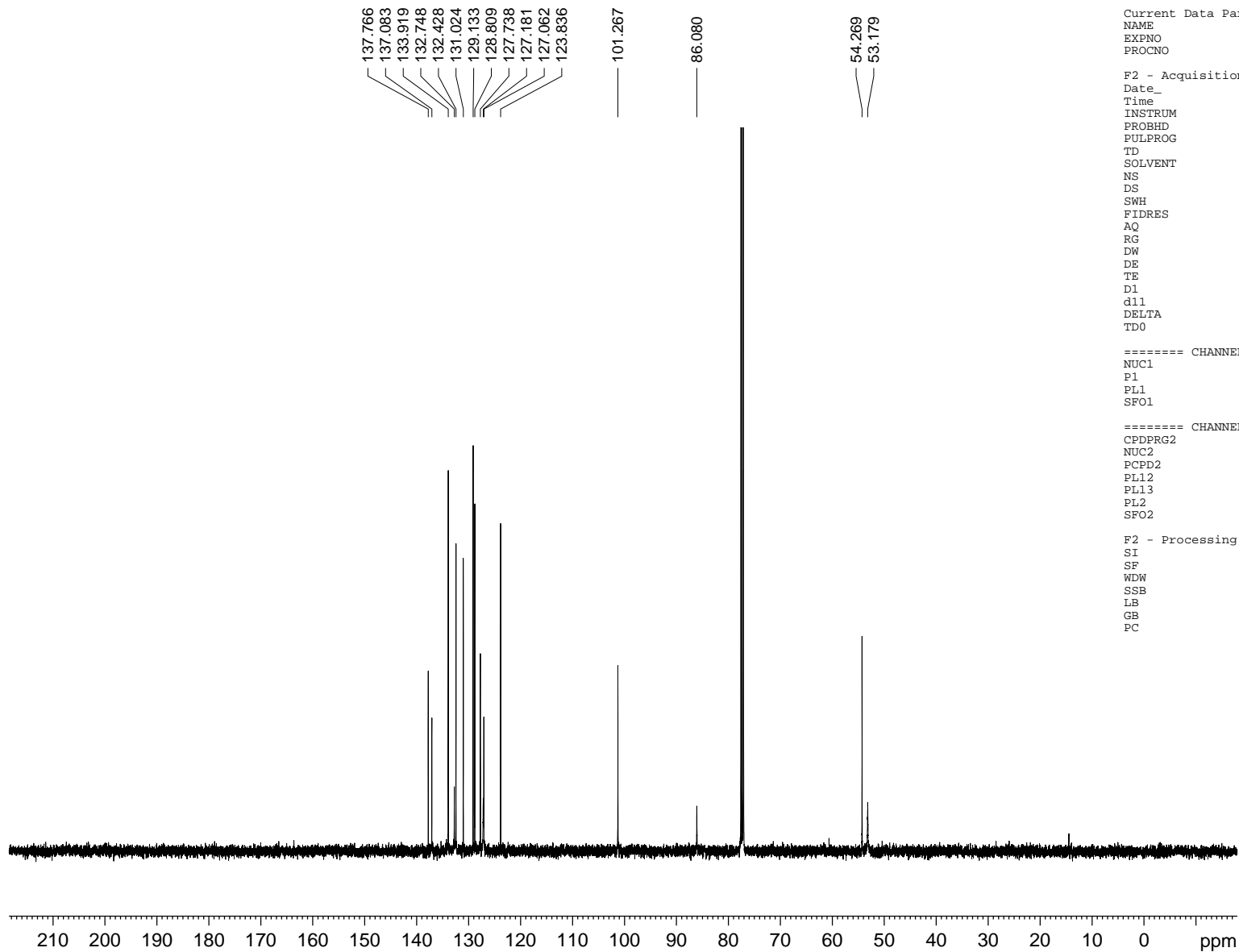
```

===== CHANNEL f1 =====
NUC1              1H
P1                10.76 usec
PL1              0.00 dB
SFO1             500.3932525 MHz
  
```

```

F2 - Processing parameters
SI                32768
SF               500.3900160 MHz
WDW              EM
SSB              0
LB               0.30 Hz
GB              0
PC              1.00
  
```





```

Current Data Parameters
NAME                      FT595
EXPNO                     2
PROCNO                   1

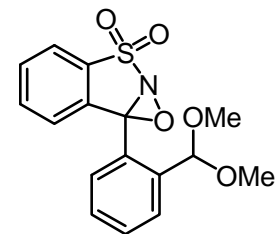
F2 - Acquisition Parameters
Date_                    20081024
Time                     17.15
INSTRUM                  spect
PROBHD                   5 mm PABBO BB-
PULPROG                  zgpg30
TD                       65536
SOLVENT                  CDCl3
NS                       512
DS                       4
SWH                      29761.904 Hz
FIDRES                   0.454131 Hz
AQ                       1.1010548 sec
RG                       456
DW                      16.800 usec
DE                       6.50 usec
TE                       298.7 K
D1                      2.00000000 sec
d11                      0.03000000 sec
DELTA                   1.89999998 sec
TD0                      1

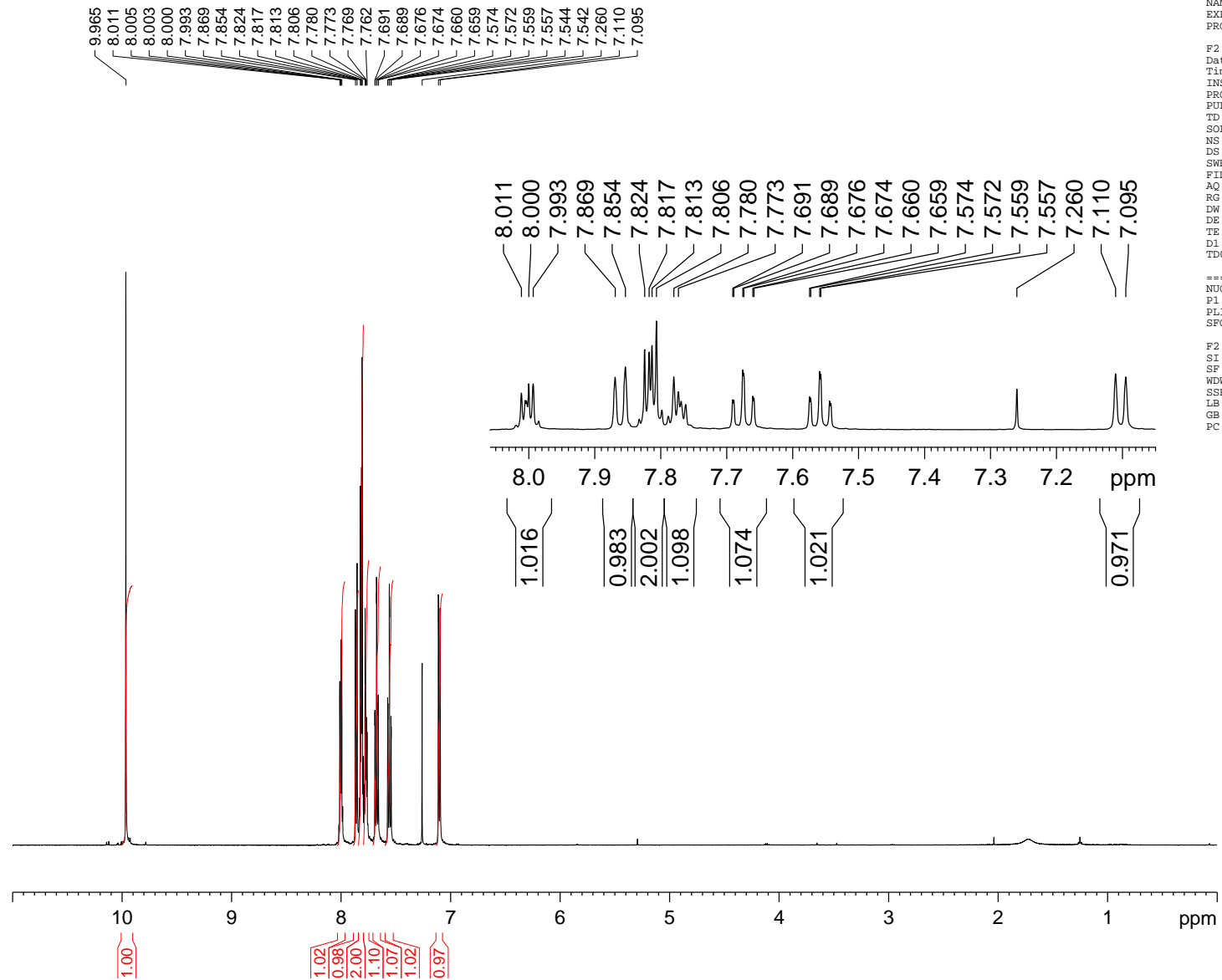
===== CHANNEL f1 =====
NUC1                      13C
P1                       7.50 usec
PL1                      1.00 dB
SFO1                     125.8357479 MHz

===== CHANNEL f2 =====
CPDPRG2                  waltz16
NUC2                      1H
PCPD2                    80.00 usec
PL12                     17.43 dB
PL13                     18.43 dB
PL2                      0.00 dB
SFO2                     500.3920016 MHz

F2 - Processing parameters
SI                       32768
SF                      125.8231371 MHz
WDW                      EM
SSB                      0
LB                       1.00 Hz
GB                       0
PC                       1.40

```





```

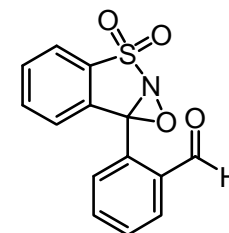
Current Data Parameters
NAME          FT348
EXPNO        3
PROCNO       1

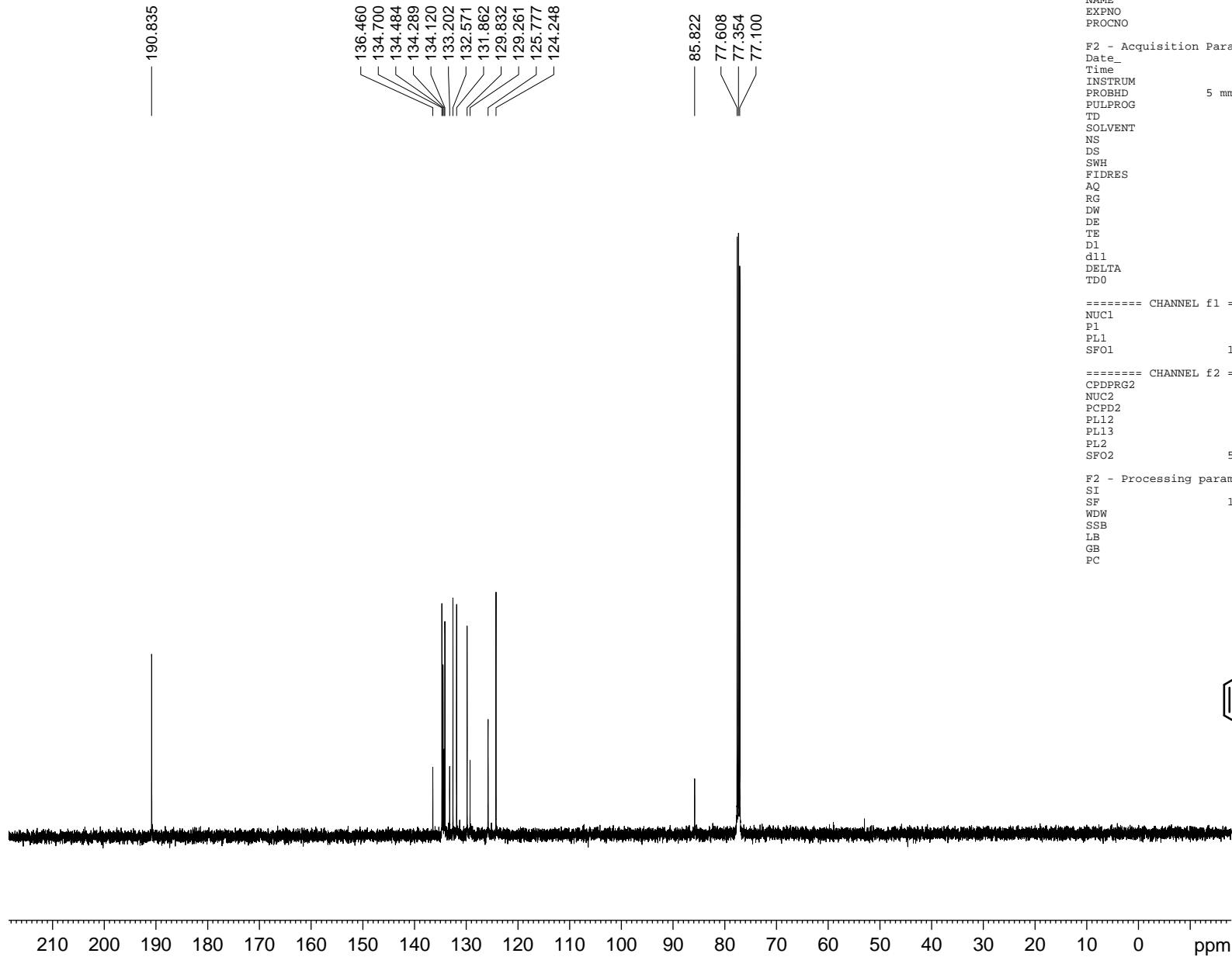
F2 - Acquisition Parameters
Date_        20080922
Time         15.12
INSTRUM      spect
PROBHD       5 mm PABBO BB-
PULPROG      zg30
TD           65536
SOLVENT      CDCl3
NS           8
DS           2
SWH          7002.801 Hz
FIDRES       0.106854 Hz
AQ           4.6793203 sec
RG           287
DW           71.400 usec
DE           6.50 usec
TE           297.4 K
D1           1.0000000 sec
TD0          1

===== CHANNEL f1 =====
NUC1         1H
P1           10.76 usec
PL1          0.00 dB
SFO1         500.3932525 MHz

F2 - Processing parameters
SI           32768
SF           500.3900150 MHz
WDW          EM
SSB          0
LB           0.30 Hz
GB           0
PC           1.00

```





```

Current Data Parameters      FT348
NAME                          2
EXPNO                         1
PROCNO                        1

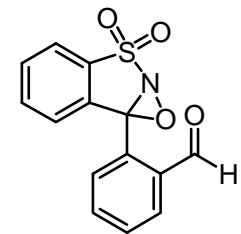
F2 - Acquisition Parameters
Date_                          20080223
Time                           16.04
INSTRUM                       spect
PROBHD                        5 mm PABBO BB-
PULPROG                       zgpg30
TD                             65536
SOLVENT                       CDCl3
NS                             282
DS                             4
SWH                           29761.904 Hz
FIDRES                        0.454131 Hz
AQ                             1.1010548 sec
RG                             456
DW                             16.800 usec
DE                             6.50 usec
TE                             297.3 K
D1                             2.00000000 sec
d11                            0.03000000 sec
DELTA                          1.89999998 sec
TD0                             1

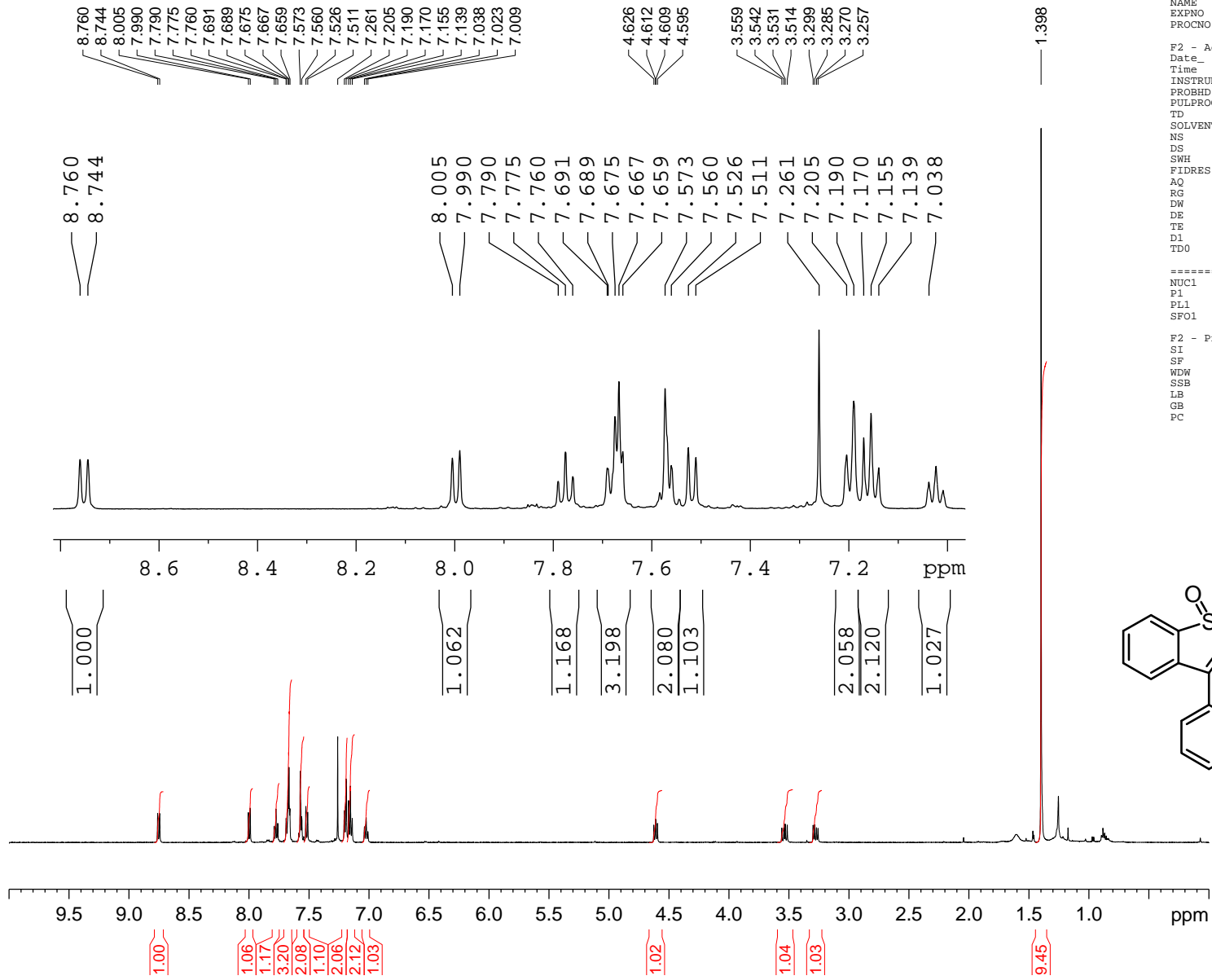
===== CHANNEL f1 =====
NUC1                           13C
P1                             7.50 usec
PL1                             1.00 dB
SFO1                          125.8357479 MHz

===== CHANNEL f2 =====
CPDPRG2                       waltz16
NUC2                           1H
PCPD2                          80.00 usec
PL12                           17.43 dB
PL13                           18.43 dB
PL2                             0.00 dB
SFO2                          500.3920016 MHz

F2 - Processing parameters
SI                             32768
SF                             125.8231305 MHz
WDW                             EM
SSB                             0
LB                             1.00 Hz
GB                             0
PC                             1.40

```





```

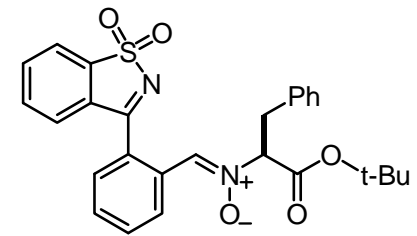
Current Data Parameters
NAME FT591
EXPNO 2
PROCNO 1

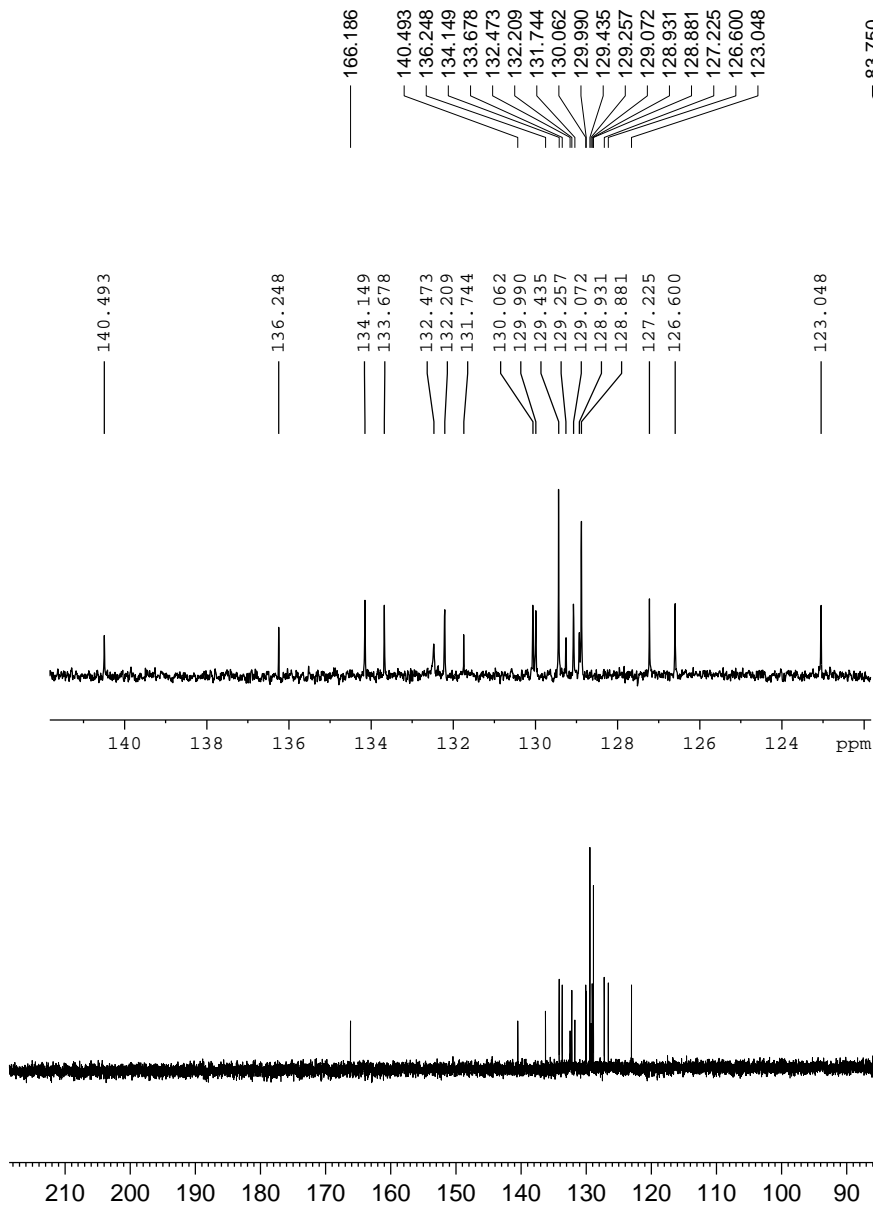
F2 - Acquisition Parameters
Date_ 20081018
Time 16.29
INSTRUM spect
PROBHD 5 mm PABBO BB-
PULPROG zg30
TD 65536
SOLVENT CDCl3
NS 8
DS 2
SWH 7002.801 Hz
FIDRES 0.106854 Hz
AQ 4.6793203 sec
RG 382
DW 71.400 usec
DE 6.50 usec
TE 297.3 K
D1 1.00000000 sec
TD0 1

----- CHANNEL f1 -----
NUC1 1H
P1 10.76 usec
PL1 0.00 dB
SFO1 500.3932525 MHz

F2 - Processing parameters
SI 32768
SF 500.3900160 MHz
WDW EM
SSB 0
LB 0.30 Hz
GB 0
PC 1.00

```





```

Current Data Parameters
NAME          FT591
EXPNO         3
PROCNO        1

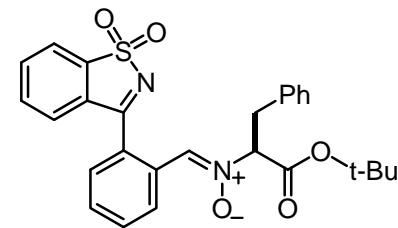
F2 - Acquisition Parameters
Date_         20081018
Time          16.57
INSTRUM       spect
PROBHD        5 mm PABBO BB-
PULPROG       zgpg30
TD            65536
SOLVENT       CDCl3
NS            512
DS            4
SWH           29761.904 Hz
FIDRES        0.454131 Hz
AQ            1.1010548 sec
RG            456
DW            16.800 usec
DE            6.50 usec
TE            298.2 K
D1            2.00000000 sec
d11           0.03000000 sec
DELTA         1.89999998 sec
TD0           1

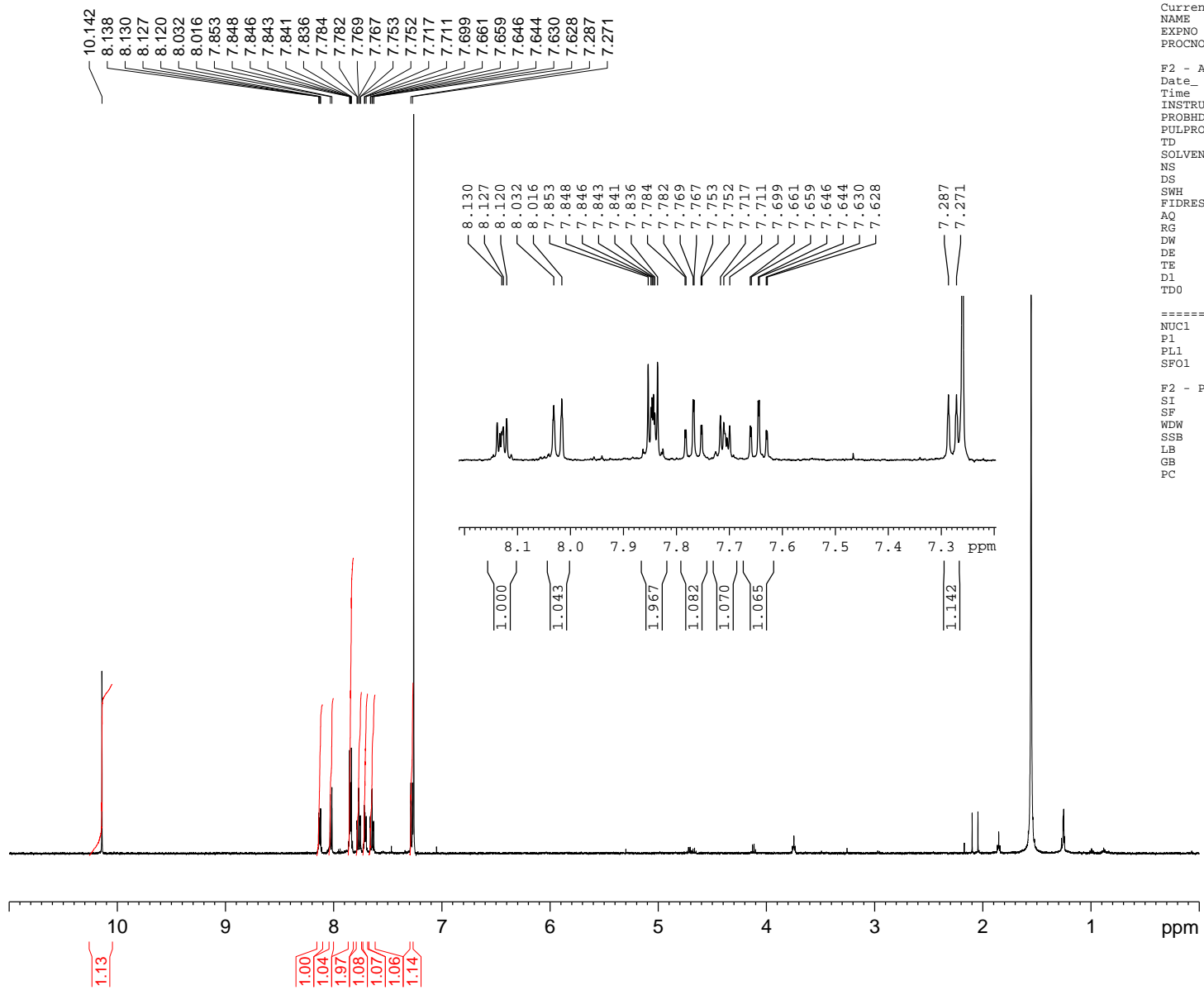
===== CHANNEL f1 =====
NUC1          13C
P1            7.50 usec
PL1           1.00 dB
SFO1          125.8357479 MHz

===== CHANNEL f2 =====
CPDPRG2       waltz16
NUC2          1H
PCPD2         80.00 usec
PL12          17.43 dB
PL13          18.43 dB
PL2           0.00 dB
SFO2          500.3920016 MHz

F2 - Processing parameters
SI            32768
SF            125.8231246 MHz
WDW           EM
SSB           0
LB            1.00 Hz
GB            0
PC            1.40

```





```

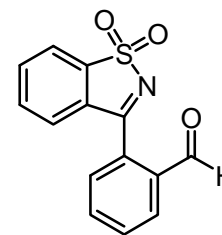
Current Data Parameters
NAME          FT554
EXPNO        2
PROCNO       1

F2 - Acquisition Parameters
Date_        20080904
Time         19.09
INSTRUM      spect
PROBHD       5 mm PABBO BB-
PULPROG      zg30
TD           65536
SOLVENT      CDCl3
NS           8
DS           2
SWH          7002.801 Hz
FIDRES       0.106854 Hz
AQ           4.6793203 sec
RG           1150
DW           71.400 usec
DE           6.50 usec
TE           298.2 K
D1           1.00000000 sec
TDO          1

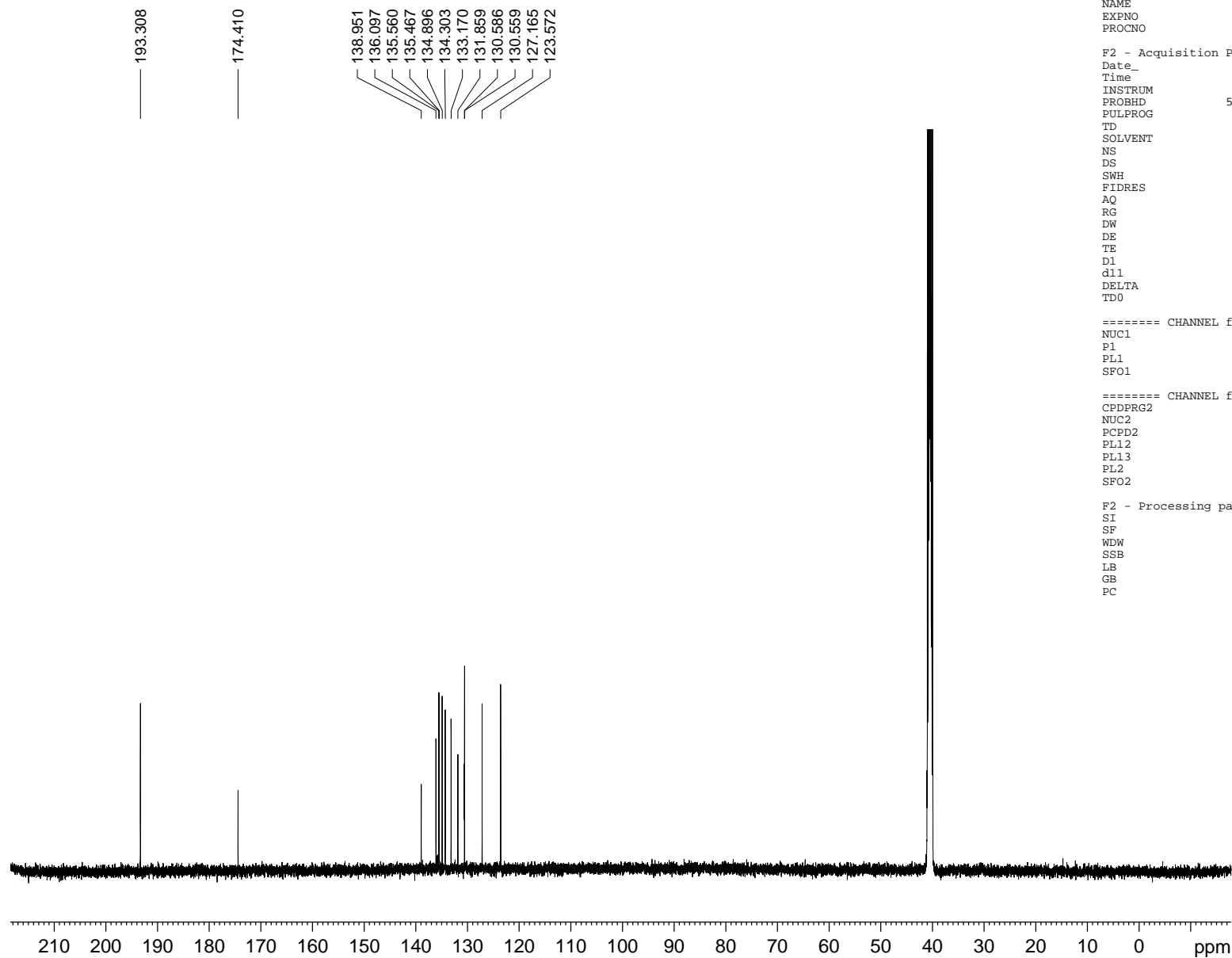
===== CHANNEL f1 =====
NUC1         1H
P1           10.76 usec
PL1          0.00 dB
SFO1         500.3932525 MHz

F2 - Processing parameters
SI           32768
SF           500.3900162 MHz
WDW          EM
SSB          0
LB           0.30 Hz
GB           0
PC           1.00

```



FT554 DMSO



Current Data Parameters

NAME FT554
EXPNO 6
PROCNO 1

F2 - Acquisition Parameters

Date_ 20081026
Time 18.18
INSTRUM spect
PROBHD 5 mm PABBO BB-
PULPROG zgpg30
TD 65536
SOLVENT DMSO
NS 22018
DS 4
SWH 29761.904 Hz
FIDRES 0.454131 Hz
AQ 1.1010548 sec
RG 1290
DW 16.800 usec
DE 6.50 usec
TE 298.9 K
D1 2.0000000 sec
d11 0.0300000 sec
DELTA 1.8999999 sec
TD0 1

==== CHANNEL f1 =====

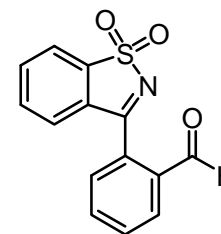
NUC1 13C
P1 7.50 usec
PL1 1.00 dB
SFO1 125.8357479 MHz

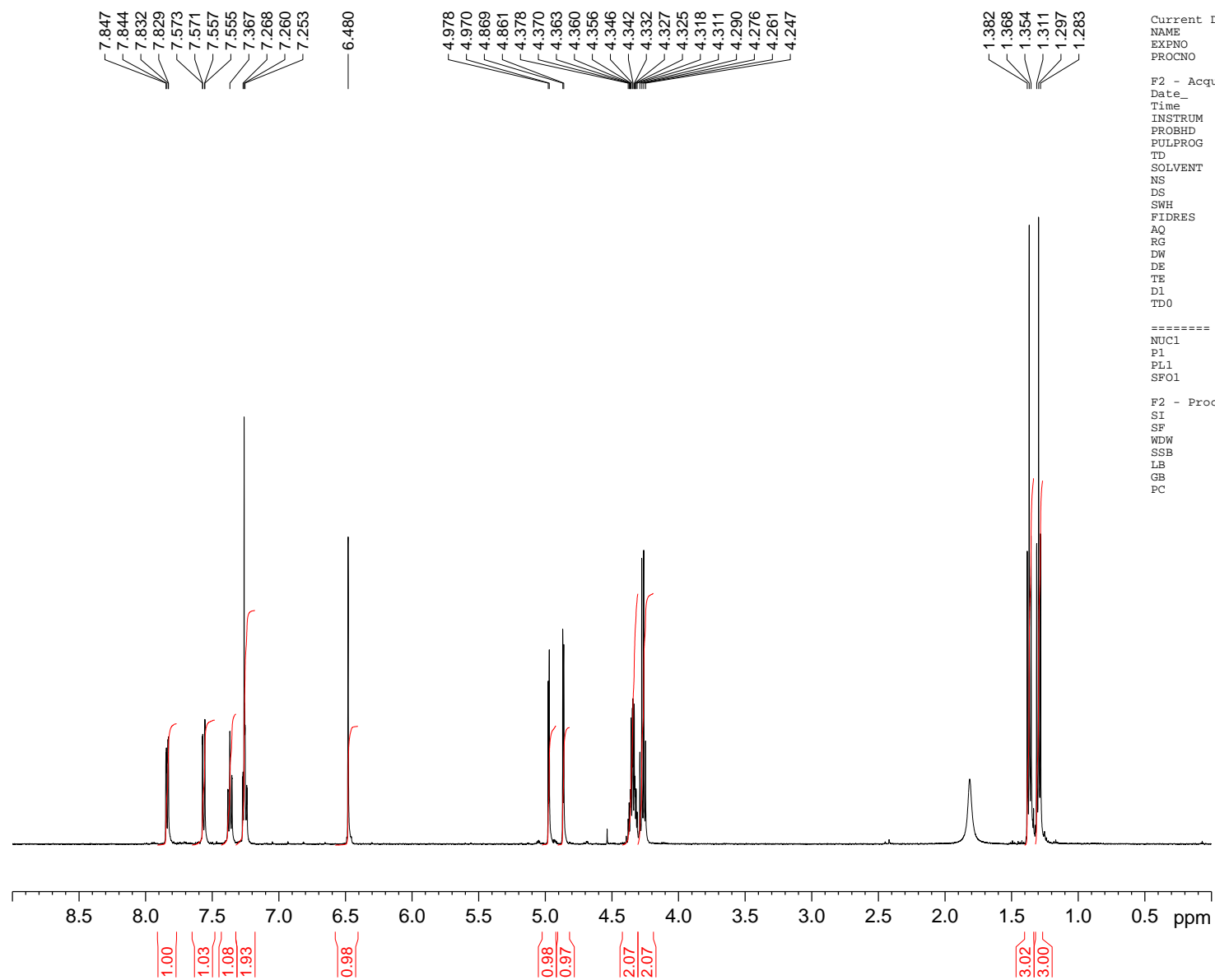
==== CHANNEL f2 =====

CPDPRG2 waltz16
NUC2 1H
PCPD2 80.00 usec
PL12 17.43 dB
PL13 18.43 dB
PL2 0.00 dB
SFO2 500.3920016 MHz

F2 - Processing parameters

SI 32768
SF 125.8231102 MHz
WDW EM
SSB 0
LB 1.00 Hz
GB 0
PC 1.40





```

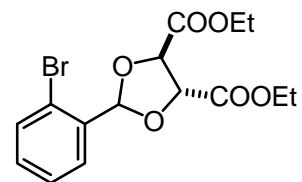
Current Data Parameters
NAME                      FT588
EXPNO                     3
PROCNO                   1

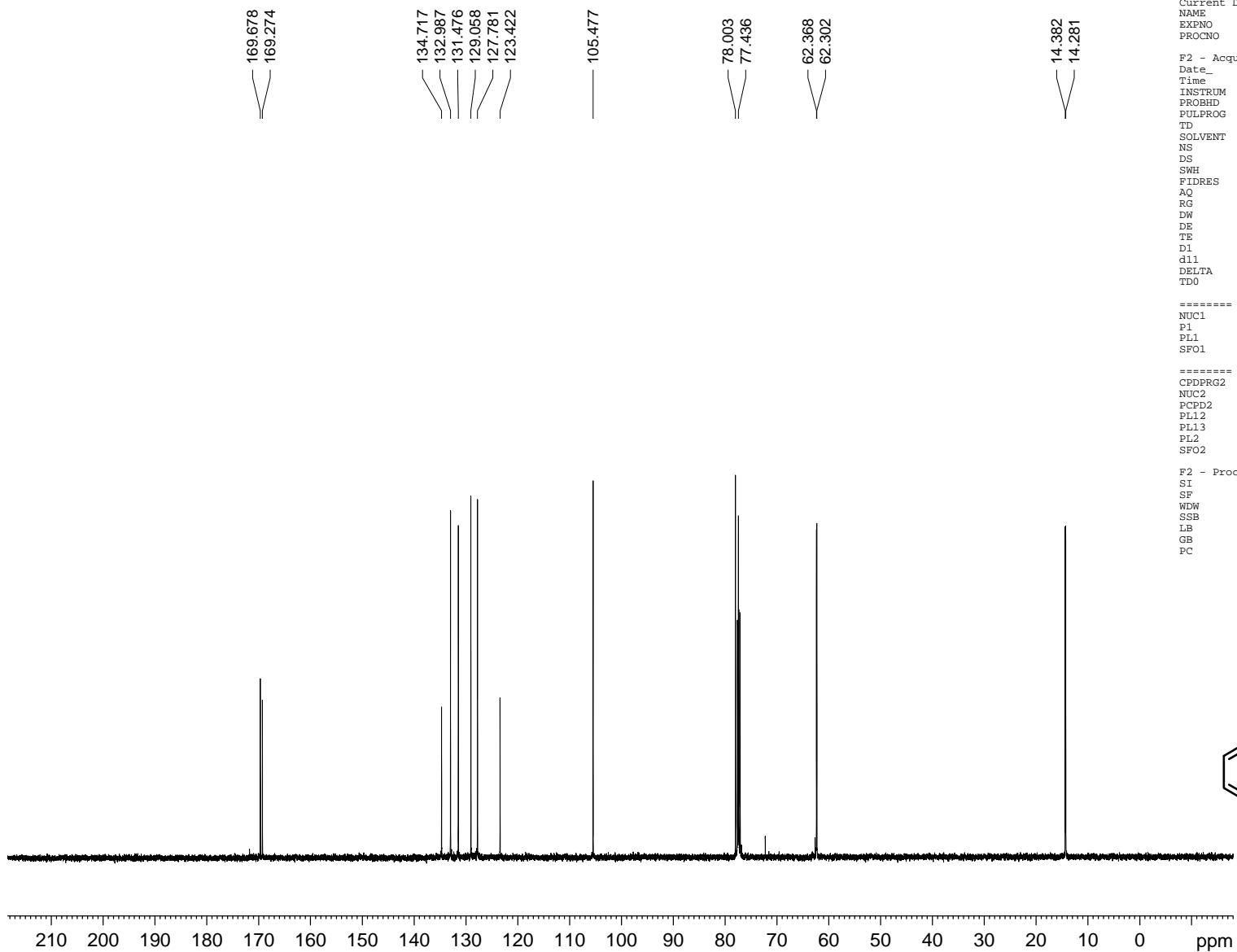
F2 - Acquisition Parameters
Date_                    20081014
Time                     16.56
INSTRUM                  spect
PROBHD                   5 mm PABBO BB-
PULPROG                  zg30
TD                       65536
SOLVENT                  CDCl3
NS                       8
DS                       2
SWH                      7002.801 Hz
FIDRES                   0.106854 Hz
AQ                       4.6793203 sec
RG                       456
DW                       71.400 usec
DE                       6.50 usec
TE                       298.2 K
D1                       1.00000000 sec
TD0                      1

===== CHANNEL f1 =====
NUC1                     1H
P1                       10.76 usec
PL1                      0.00 dB
SF01                    500.3932525 MHz

F2 - Processing parameters
SI                       32768
SF                       500.3900162 MHz
WDW                      EM
SSB                      0
LB                       0.30 Hz
GB                       0
PC                       1.00

```





```

Current Data Parameters
NAME FT588
EXPNO 4
PROCNO 1

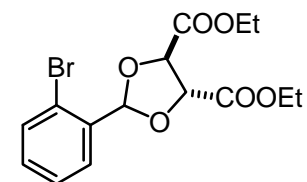
F2 - Acquisition Parameters
Date_ 20081015
Time 16.13
INSTRUM spect
PROBHD 5 mm PABBO B4
PULPROG zgpg30
TD 65536
SOLVENT CDCl3
NS 134
DS 4
SWH 29761.904 Hz
FIDRES 0.454131 Hz
AQ 1.1010548 sec
RG 1030
DW 16.800 usec
DE 6.50 usec
TE 299.5 K
D1 2.00000000 sec
d11 0.03000000 sec
DELTA 1.89999998 sec
TD0 1

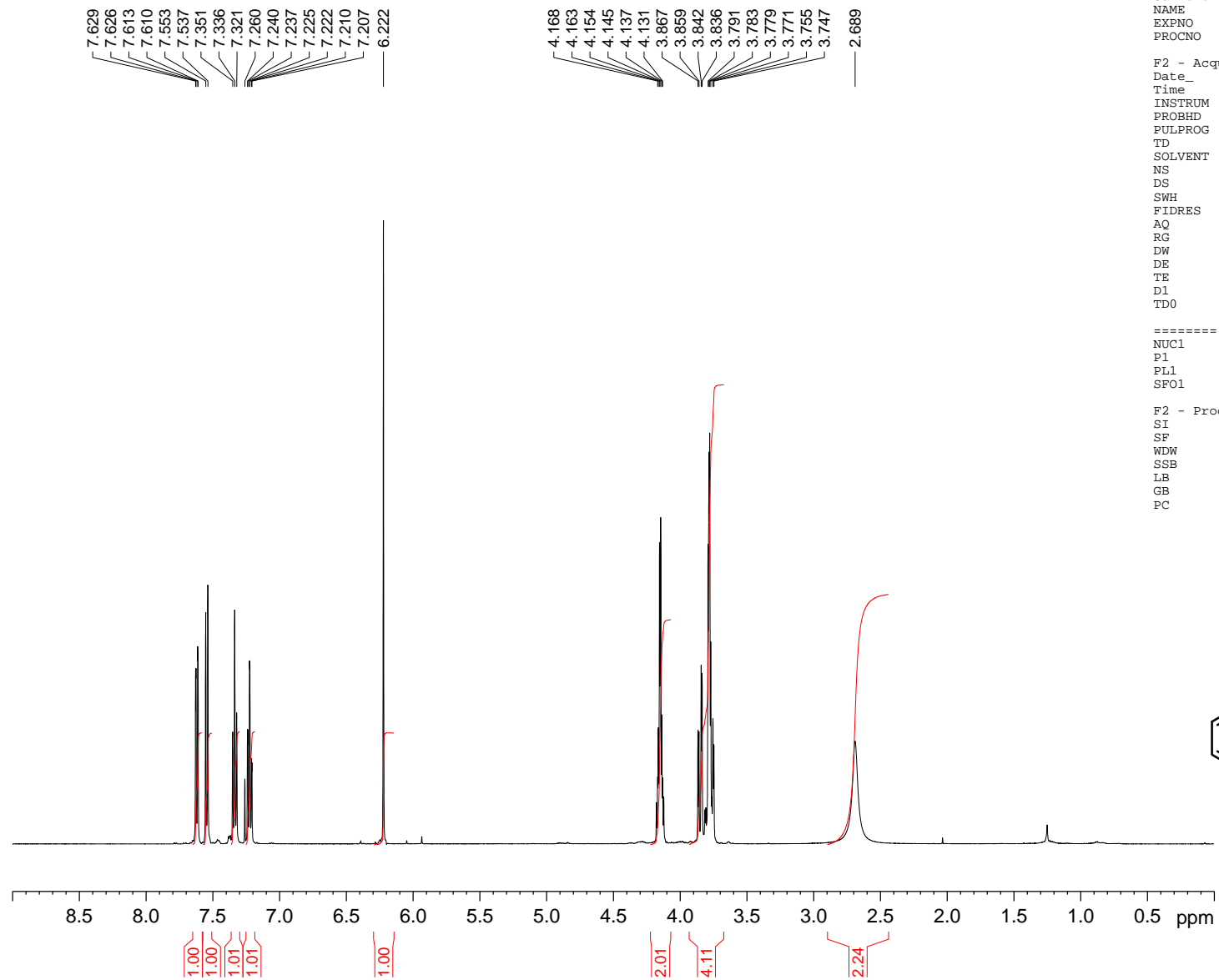
===== CHANNEL f1 =====
NUC1 13C
P1 7.50 usec
PL1 1.00 dB
SFO1 125.8357479 MHz

===== CHANNEL f2 =====
CPDPRG2 waltz16
NUC2 1H
PCPD2 80.00 usec
PL12 17.43 dB
PL13 18.43 dB
PL2 0.00 dB
SFO2 500.3920016 MHz

F2 - Processing parameters
SI 32768
SF 125.8231391 MHz
WDW EM
SSB 0
LB 1.00 Hz
GB 0
PC 1.40

```





Current Data Parameters

NAME FT590
EXPNO 1
PROCNO 1

F2 - Acquisition Parameters

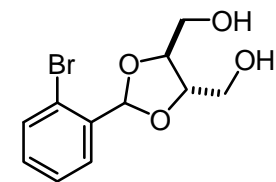
Date_ 20081016
Time 18.10
INSTRUM spect
PROBHD 5 mm PABBO BB-
PULPROG zg30
TD 65536
SOLVENT CDCl3
NS 8
DS 2
SWH 7002.801 Hz
FIDRES 0.106854 Hz
AQ 4.6793203 sec
RG 128
DW 71.400 usec
DE 6.50 usec
TE 296.5 K
D1 1.00000000 sec
TDO 1

----- CHANNEL f1 -----

NUC1 1H
P1 10.76 usec
PL1 0.00 dB
SFO1 500.3932525 MHz

F2 - Processing parameters

SI 32768
SF 500.3900161 MHz
WDW EM
SSB 0
LB 0.30 Hz
GB 0
PC 1.00



Current Data Parameters

NAME FT590
EXPNO 2
PROCNO 1

F2 - Acquisition Parameters

Date_ 20081016
Time 18.17
INSTRUM spect
PROBHD 5 mm PABBO BB-
PULPROG zgpg30
TD 65536
SOLVENT CDC13
NS 115
DS 4
SWH 29761.904 Hz
FIDRES 0.454131 Hz
AQ 1.1010548 sec
RG 456
DW 16.800 usec
DE 6.50 usec
TE 297.4 K
D1 2.0000000 sec
d11 0.0300000 sec
DELTA 1.89999998 sec
TD0 1

==== CHANNEL f1 =====

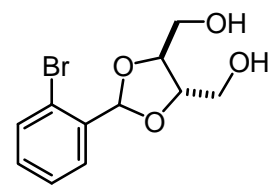
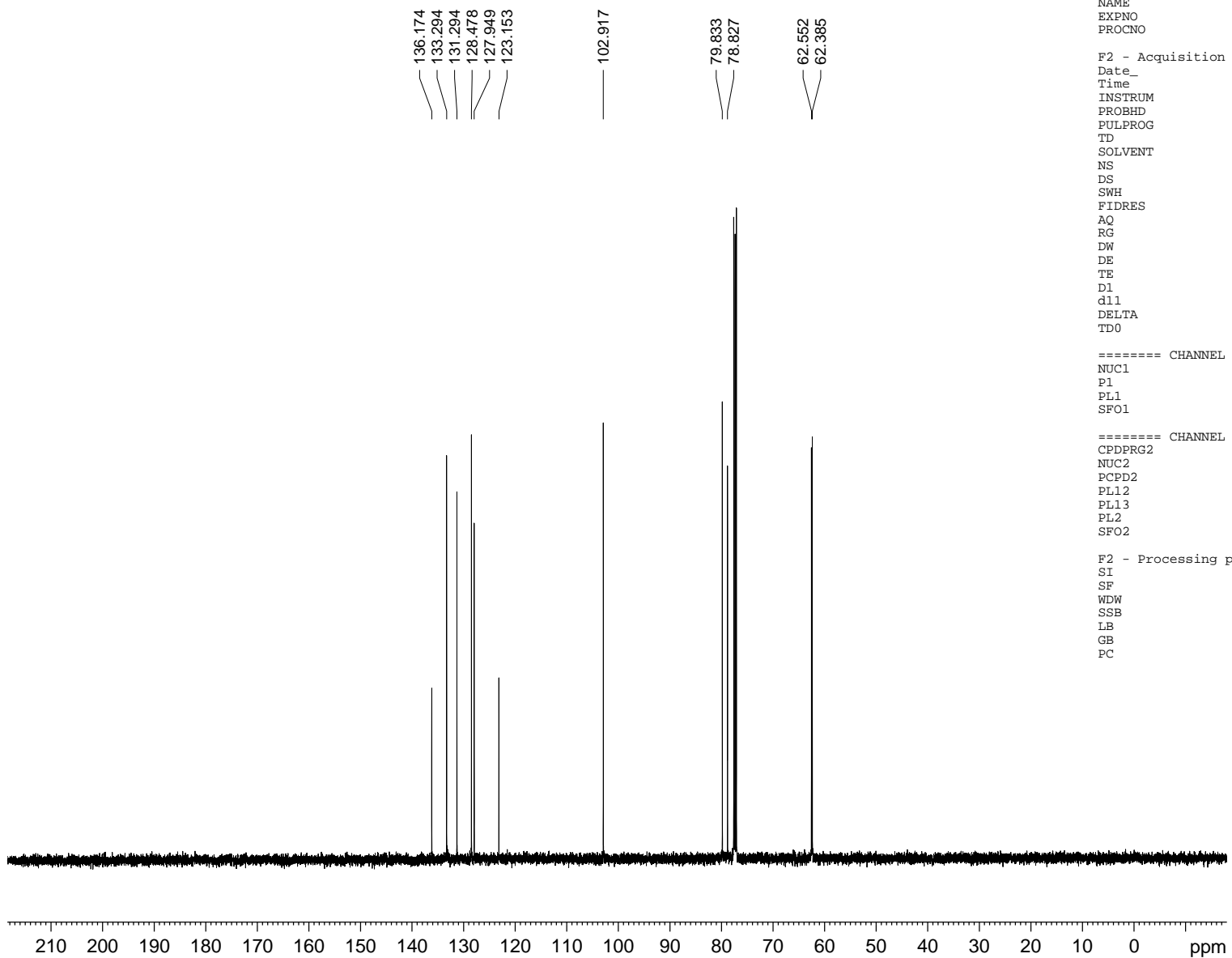
NUC1 13C
P1 7.50 usec
PL1 1.00 dB
SFO1 125.8357479 MHz

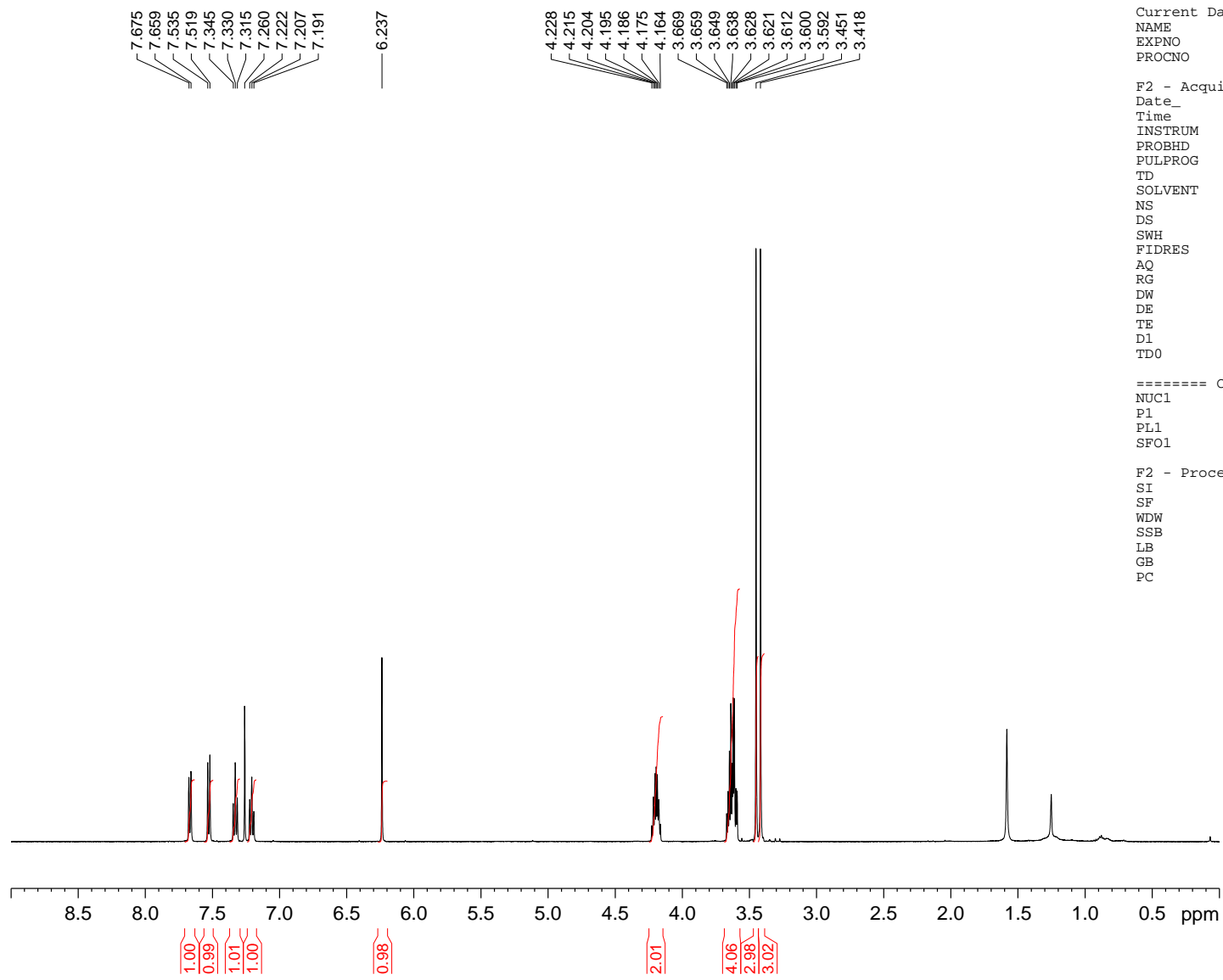
==== CHANNEL f2 =====

CPDPRG2 waltz16
NUC2 1H
PCPD2 80.00 usec
PL12 17.43 dB
PL13 18.43 dB
PL2 0.00 dB
SFO2 500.3920016 MHz

F2 - Processing parameters

SI 32768
SF 125.8231314 MHz
WDW EM
SSB 0
LB 1.00 Hz
GB 0
PC 1.40





Current Data Parameters

NAME FT511
EXPNO 5
PROCNO 1

F2 - Acquisition Parameters

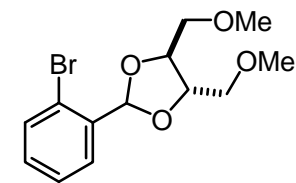
Date_ 20081016
Time 16.51
INSTRUM spect
PROBHD 5 mm PABBO BB-
PULPROG zg30
TD 65536
SOLVENT CDCl3
NS 8
DS 2
SWH 7002.801 Hz
FIDRES 0.106854 Hz
AQ 4.6793203 sec
RG 362
DW 71.400 usec
DE 6.50 usec
TE 296.5 K
D1 1.00000000 sec
TD0 1

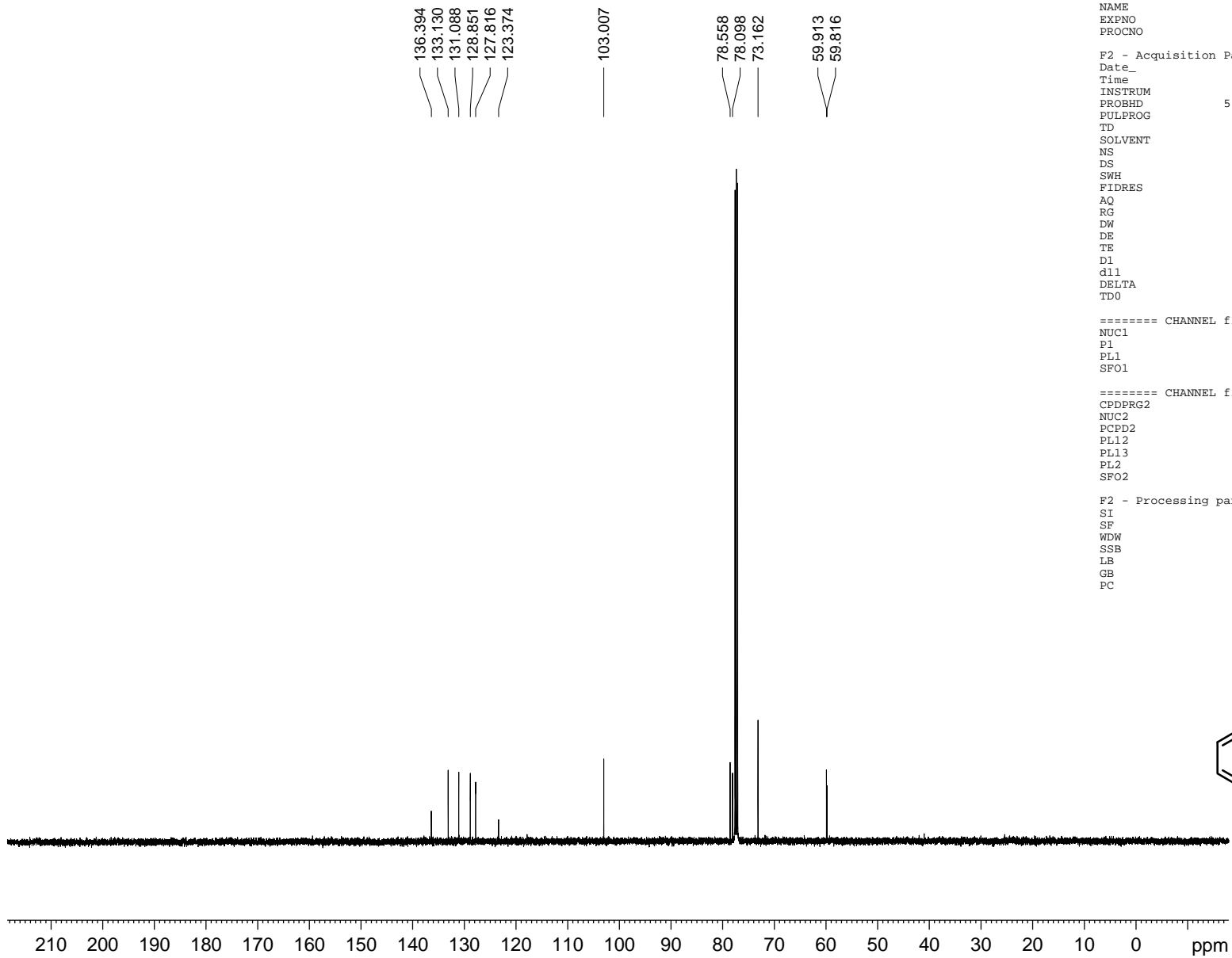
===== CHANNEL f1 =====

NUC1 1H
P1 10.76 usec
PL1 0.00 dB
SFO1 500.3932525 MHz

F2 - Processing parameters

SI 32768
SF 500.3900167 MHz
WDW EM
SSB 0
LB 0.30 Hz
GB 0
PC 1.00





Current Data Parameters

NAME FT511
EXPNO 6
PROCNO 1

F2 - Acquisition Parameters

Date_ 20081016
Time 17.09
INSTRUM spect
PROBHD 5 mm PABBO BB-
PULPROG zgpg30
TD 65536
SOLVENT CDC13
NS 342
DS 4
SWH 29761.904 Hz
FIDRES 0.454131 Hz
AQ 1.1010548 sec
RG 456
DW 16.800 usec
DE 6.50 usec
TE 297.7 K
D1 2.00000000 sec
d11 0.03000000 sec
DELTA 1.89999998 sec
TDO 1

==== CHANNEL f1 =====

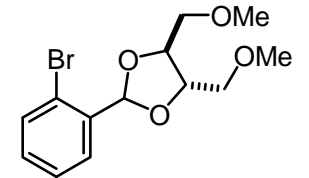
NUC1 13C
P1 7.50 usec
PL1 1.00 dB
SFO1 125.8357479 MHz

==== CHANNEL f2 =====

CPDPRG2 waltz16
NUC2 1H
PCPD2 80.00 usec
PL12 17.43 dB
PL13 18.43 dB
PL2 0.00 dB
SFO2 500.3920016 MHz

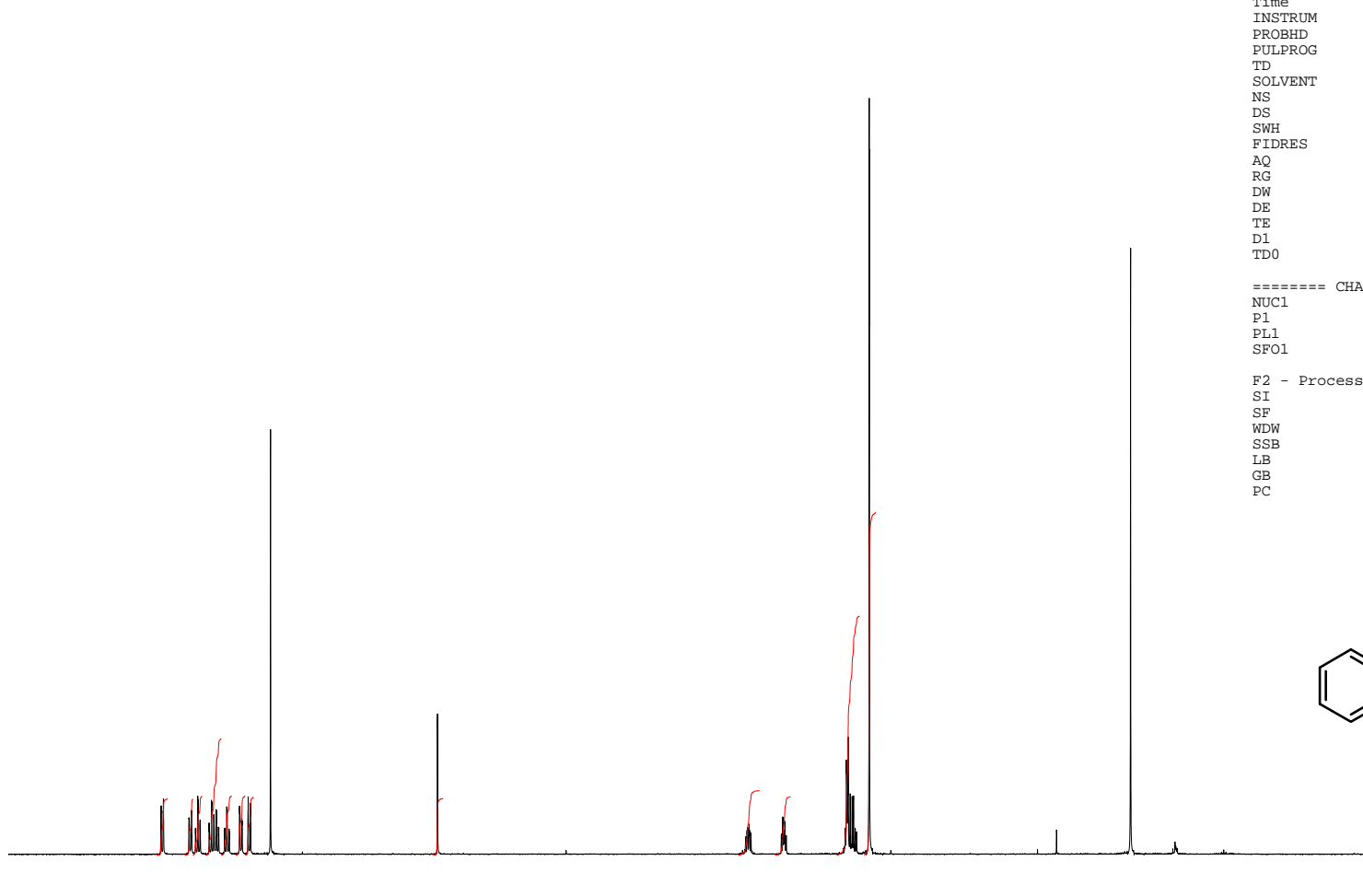
F2 - Processing parameters

SI 32768
SF 125.8231246 MHz
WDW EM
SSB 0
LB 1.00 Hz
GB 0
PC 1.40



7.743
7.741
7.728
7.726
7.668
7.665
7.652
7.650
7.636
7.621
7.619
7.606
7.603
7.566
7.563
7.550
7.548
7.535
7.533
7.466
7.464
7.450
7.448
7.408
7.393
7.260
6.152

3.288
3.286



8.5 8.0 7.5 7.0 6.5 6.0 5.5 5.0 4.5 4.0 3.5 3.0 2.5 2.0 1.5 1.0 0.5 ppm

1.00
1.00
1.05
2.06
1.05
1.05
1.05

1.01

1.15
1.04

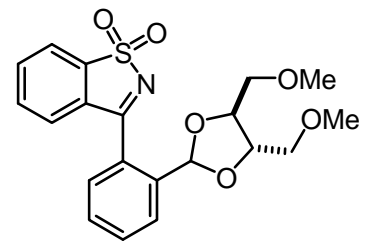
4.24
6.07

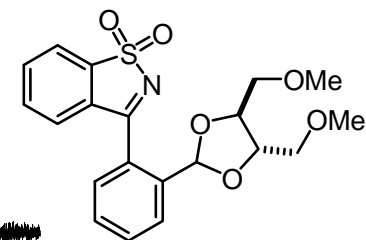
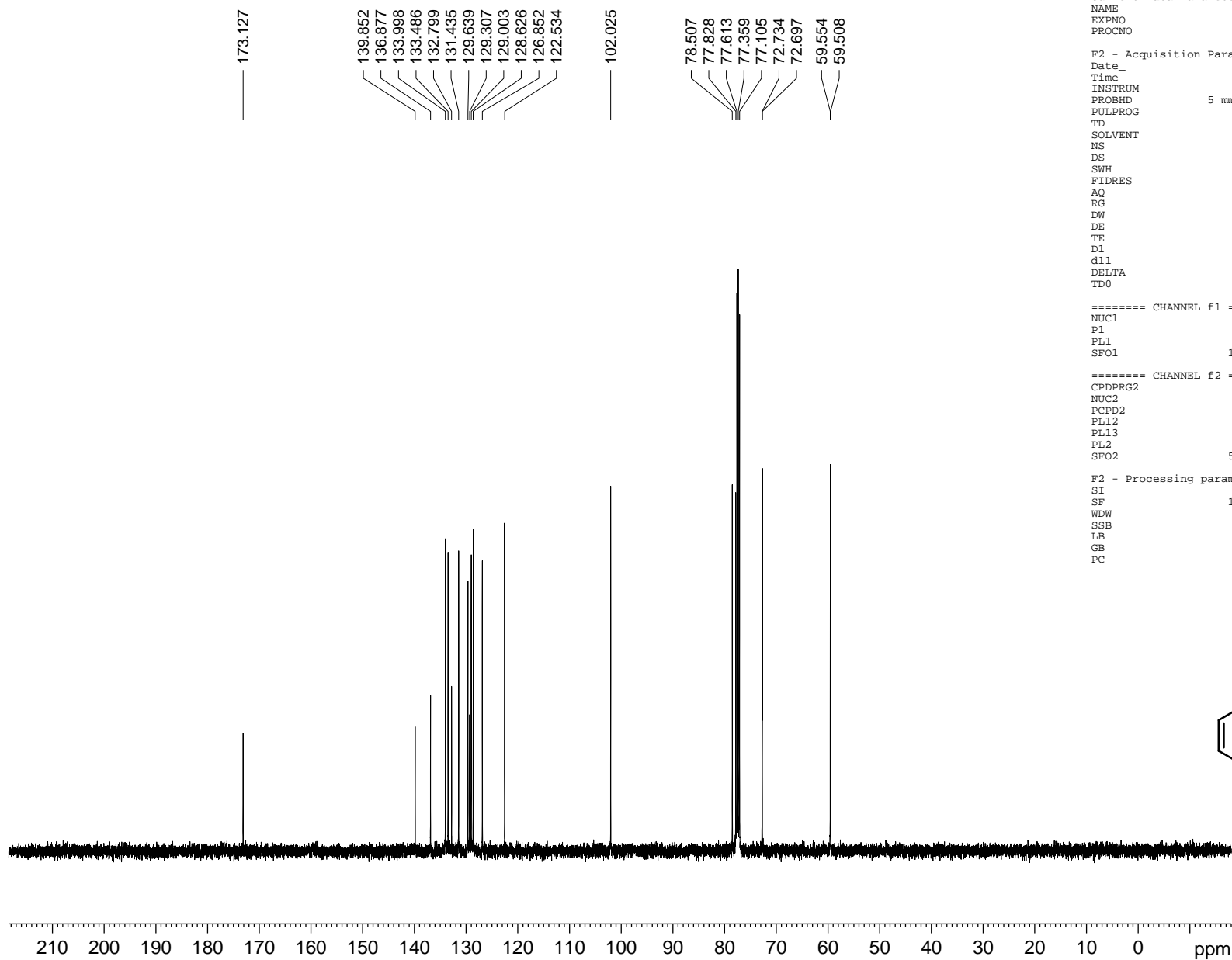
Current Data Parameters
NAME FT522
EXPNO 1
PROCNO 1

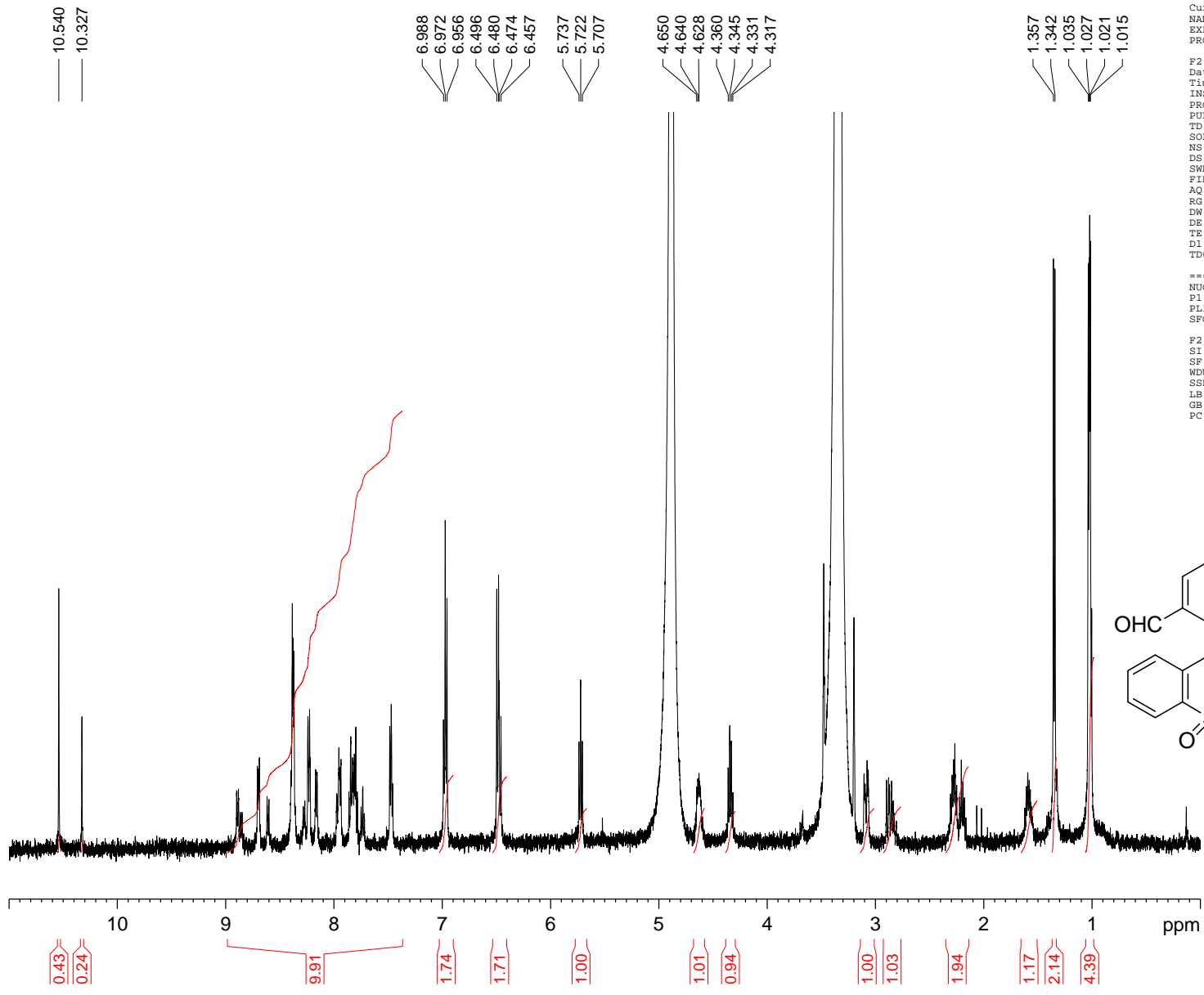
F2 - Acquisition Parameters
Date_ 20080705
Time 16.50
INSTRUM spect
PROBHD 5 mm PABBO BB-
PULPROG zg30
TD 65536
SOLVENT CDCl3
NS 8
DS 2
SWH 7002.801 Hz
FIDRES 0.106854 Hz
AQ 4.6793203 sec
RG 912
DW 71.400 usec
DE 6.50 usec
TE 298.2 K
D1 1.00000000 sec
TDO 1

==== CHANNEL f1 =====
NUC1 1H
P1 10.76 usec
PL1 0.00 dB
SFO1 500.3932525 MHz

F2 - Processing parameters
SI 32768
SF 500.3900164 MHz
WDW EM
SSB 0
LB 0.30 Hz
GB 0
PC 1.00





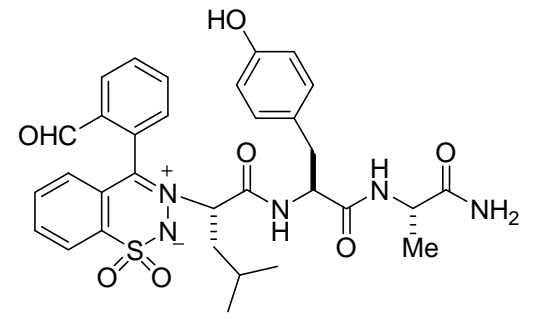


Current Data Parameters
 NAME FT611
 EXPNO 1
 PROCNO 1

F2 - Acquisition Parameters
 Date_ 20090106
 Time 11.56
 INSTRUM spect
 PROBHD 5 mm PABBO BB-
 PULPROG zg30
 TD 65536
 SOLVENT MeOD
 NS 64
 DS 2
 SWH 7002.801 Hz
 FIDRES 0.106854 Hz
 AQ 4.6793203 sec
 RG 512
 DW 71.400 usec
 DE 6.50 usec
 TE 298.2 K
 DL 1.00000000 sec
 TD0 1

===== CHANNEL f1 =====
 NUC1 1H
 P1 10.76 usec
 PL1 0.00 dB
 SFO1 500.3932525 MHz

F2 - Processing parameters
 SI 32768
 SF 500.3899986 MHz
 WDW EM
 SSB 0
 LB 0.30 Hz
 GB 0
 PC 1.00



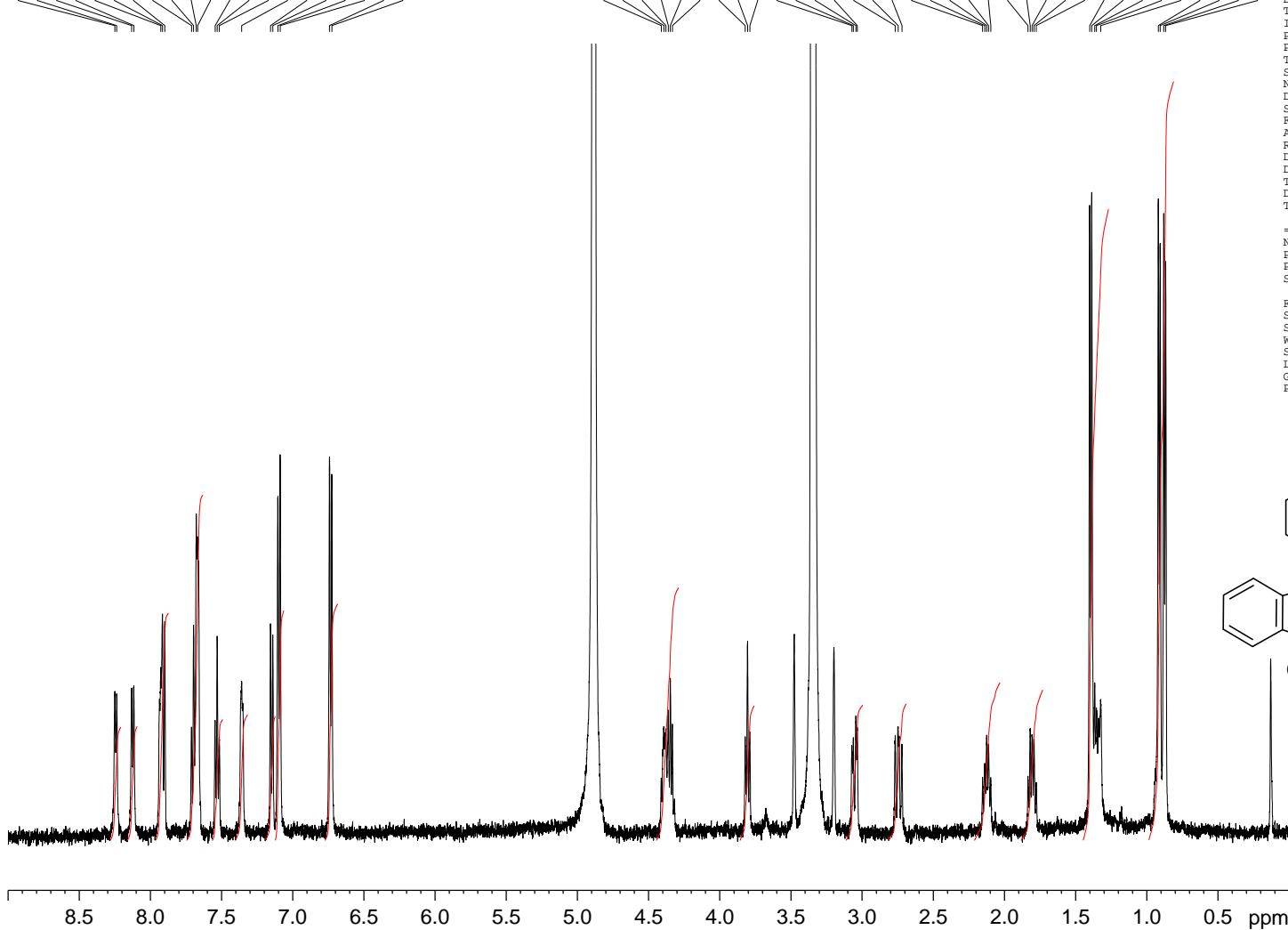
8.249
8.237
8.132
8.116
7.927
7.915
7.899
7.711
7.697
7.678
7.668
7.545
7.531
7.516
7.358
7.156
7.140
7.104
7.088
6.742
6.725

4.411
4.393
4.378
4.362
4.347
4.333
3.821
3.804
3.789
3.072
3.062
3.043
3.033
2.767
2.747
2.720
2.153
2.137
2.125
2.112
2.096
2.086
1.834
1.818
1.806
1.792
1.776
1.401
1.387
1.365
1.354
1.323
0.919
0.906
0.880
0.868

Current Data Parameters
NAME FT557
EXPNO 3
PROCNO 1
F2 - Acquisition Parameters
Date_ 20090219
Time 8.48
INSTRUM spect
PROBHD 5 mm PABBO BB-
PULPROG zg30
TD 65536
SOLVENT MeOD
NS 64
DS 2
SWH 7002.801 Hz
FIDRES 0.106854 Hz
AQ 4.6793203 sec
RG 512
DW 71.400 usec
DE 6.50 usec
TE 298.4 K
D1 1.00000000 sec
TDO 1

----- CHANNEL f1 -----
NUC1 1H
P1 10.76 usec
PL1 0.00 dB
SFO1 500.3932525 MHz

F2 - Processing parameters
SI 32768
SF 500.3899986 MHz
WDW EM
SSB 0
LB 0.30 Hz
GB 0
PC 1.00



1.00
1.01
2.00
3.04
1.07
1.11
1.10
2.03
2.08

2.23
1.19
1.19
1.20
1.39
1.33
5.56
6.68

