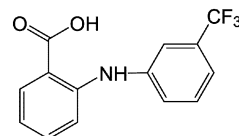


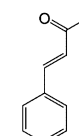
Plate #1

Zinc

FFA



CA



Clones	EC50	nHill	Emax	EC50	nHill	Emax	EC50	nHill	Emax
hTRPA1-WT	1.7+/-0.1	1.5+/-0.2	100	2.3+/-0.1	1.4+/-0.1	100	18.5+/-1.4	1.7+/-0.2	100
C621S	1.1+/-0.1	2.2+/-0.7	72.3	5.5+/-0.5	1.0+/-0.1	92.9	82.3+/-5.4	1.5+/-0.1	73
C641S	4.0+/-0.3	1.5+/-0.1	82.3	5.8+/-0.5	1.5+/-0.2	119.1	25.4+/-1.8	1.4+/-0.1	116.5
C665S	2.6+/-0.2	1.3+/-0.1	92.7	3.9+/-0.4	1.4+/-0.2	120	83.5+/-5.7	1.7+/-0.2	108.9
H983A	N.D.	N.D.	N.D.	15.5+/-0.6	2.4+/-0.2	113.5	57.4+/-2.6	2.1+/-0.2	70
C1021S	5.8+/-0.8	1.5+/-0.3	46.2	1.7+/-0.2	1.3+/-0.2	103.1	15.3+/-0.6	1.6+/-0.1	100.3
C641S/ C1021S	14.1+/-4.1	0.9+/-0.2	27.8	3.8+/-0.3	1.4+/-0.2	116.7	16.2+/-1.1	1.4+/-0.1	117.8

Plate #2

Zinc

FFA

CA

Clones	EC50	nHill	Emax	EC50	nHill	Emax	EC50	nHill	Emax
hTRPA1-WT	1.0+/-0.1	1.6+/-0.3	100	0.9+/-0.2	1.5+/-0.4	100	8.8+/-1.7	1.3+/-0.3	100
Triple cys	4.1+/-0.7	0.9+/-0.1	53.2	8.9+/-0.8	1.5+/-0.2	86.9	122.7+/-4.4	2.4+/-0.2	63.3