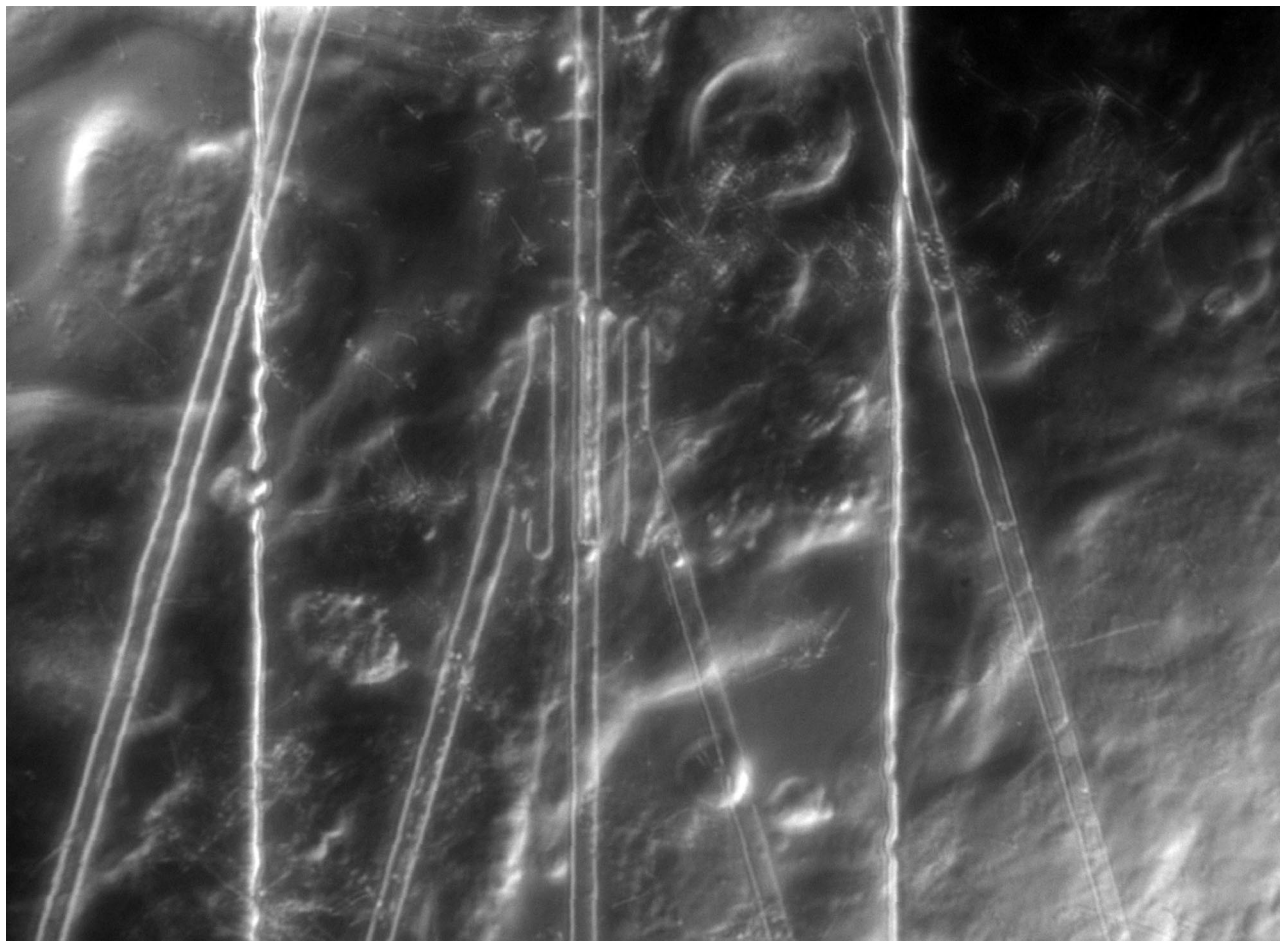


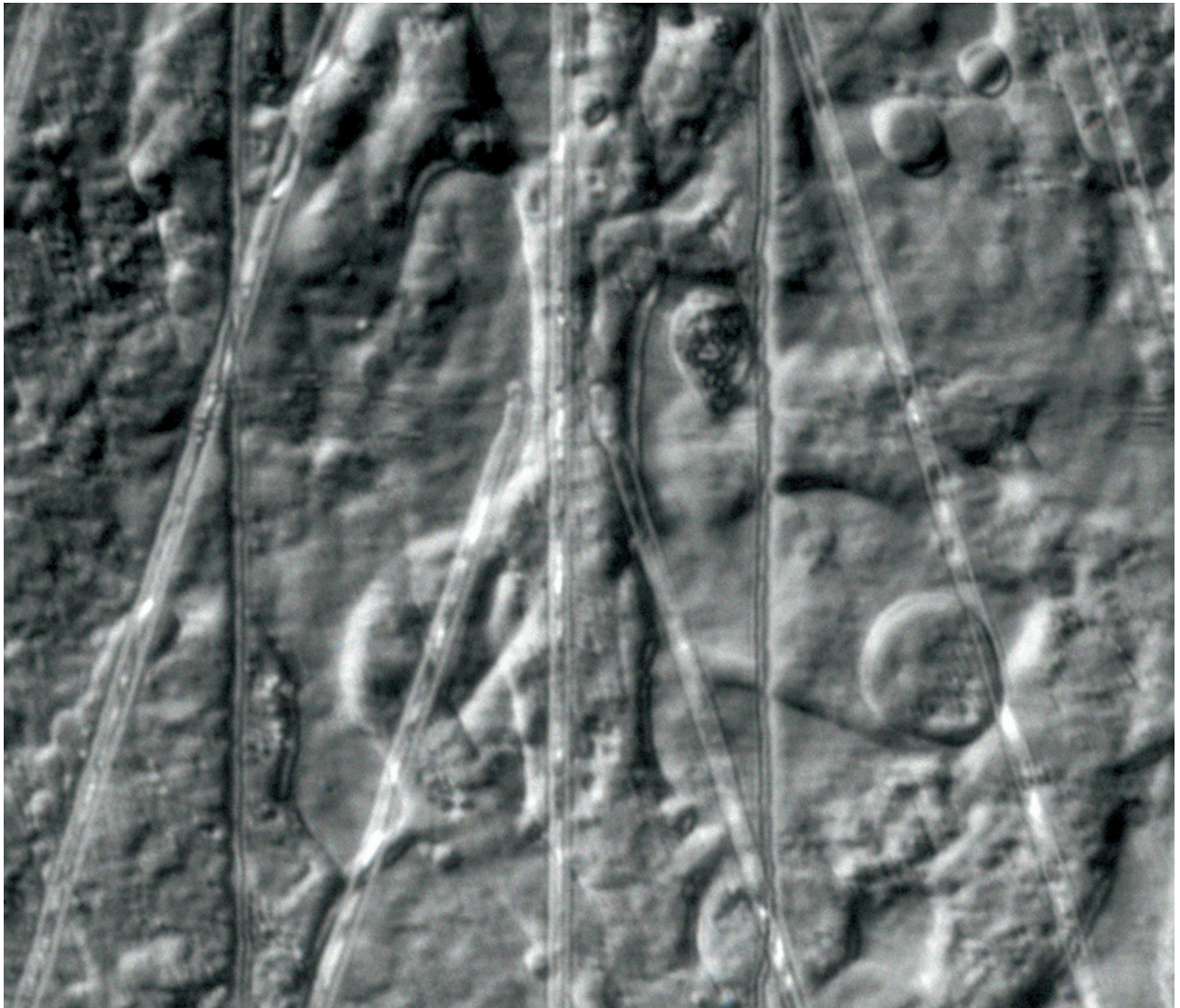
Supporting Information

Cohen-Karni et al. 10.1073/pnas.0902752106

[Movie S1 \(WMV\)](#)



Movie S1. Optical microscopy image of a group of spontaneously beating cells over a NW-FET (corresponds to Fig. 4 A and B).



Movie S2. Optical microscopy image of a relatively distinct cell in a spontaneously beating monolayer over a NWFET (corresponds to Fig. 4 C and D).

[Movie S2 \(MOV\)](#)