

SUPPLEMENTARY FIGURE S1

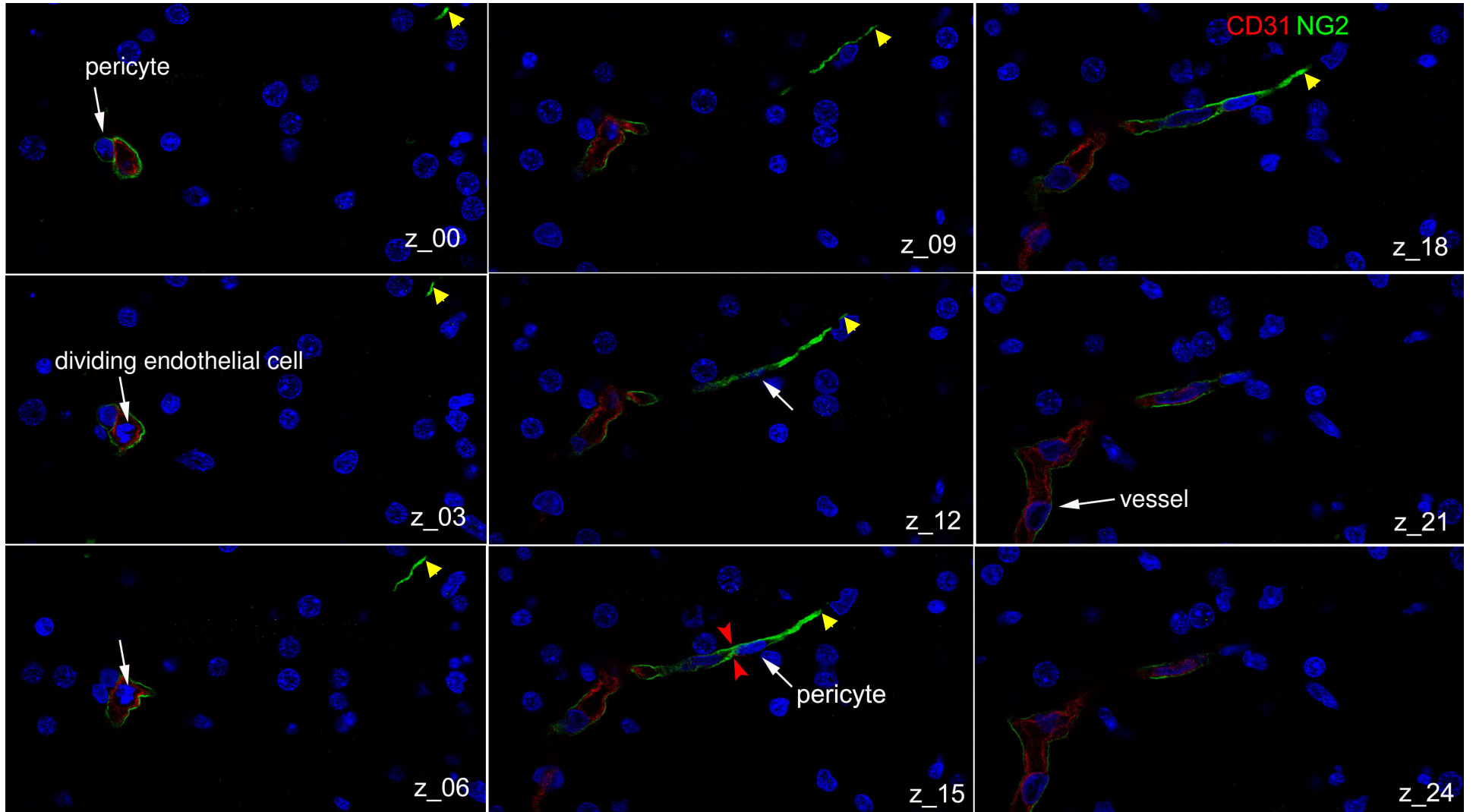


Figure S1. Z-stacks of 24 confocal laser microscopy images across sprouts of the human fetal brain stained with antibodies against CD31 (red) to identify endothelial and against NG2 (green) to reveal pericytes. Nuclei are shown by DAPI staining in blue. Sprout base is to the left in the images (*z_21, arrow, vessel*). *Yellow arrowheads* point to the very tip of the sprout, whereas *red arrowheads* point to the junction between two pericytes within a protruding cord. The distance between each image of the series is 1050 nm.