

Type of file: figure

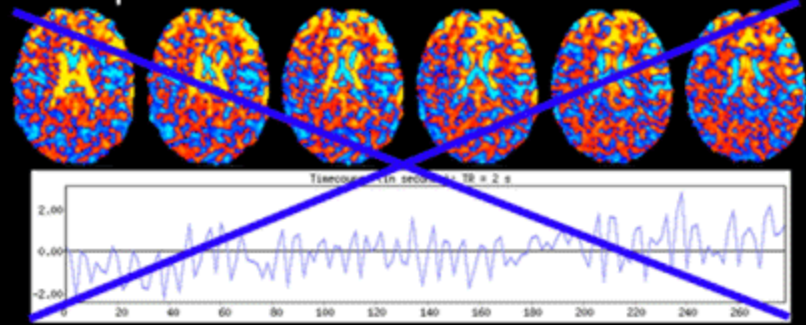
Label: supp fig 1

Filename: Supp_Fig1.gif

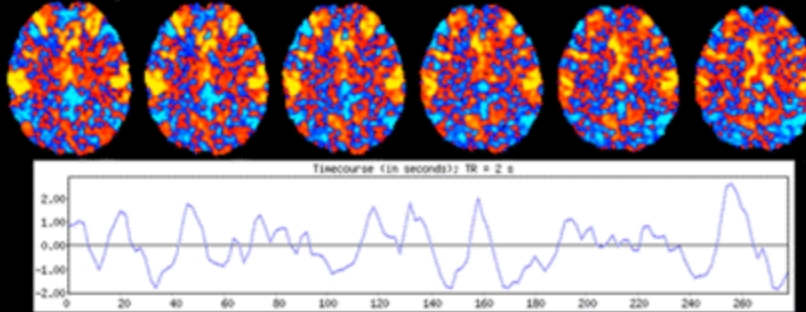
Step 1: High frequency components removed with frequency filter

Step 2: Remaining low frequency components scored on goodness-of-fit to standard template of executive-control network

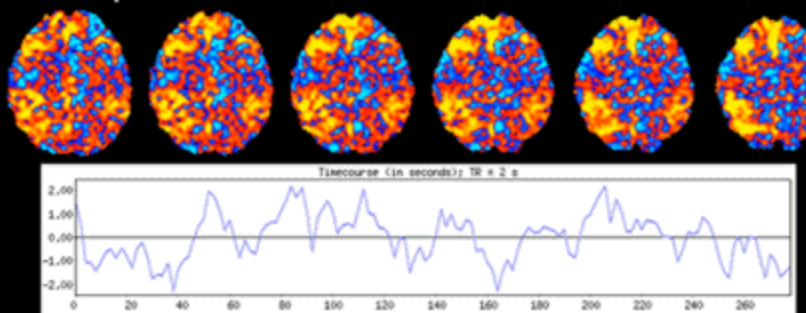
Component 1



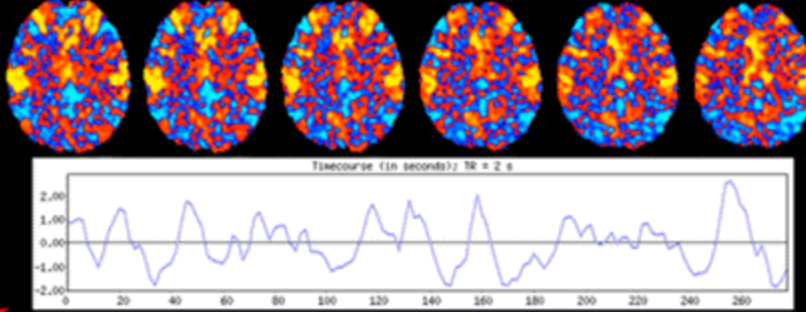
Component 2



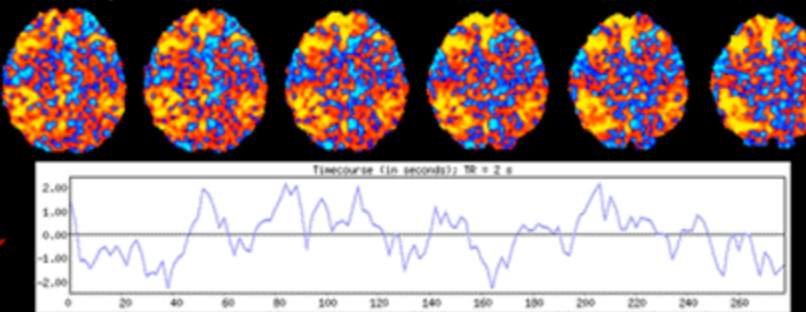
Component 3



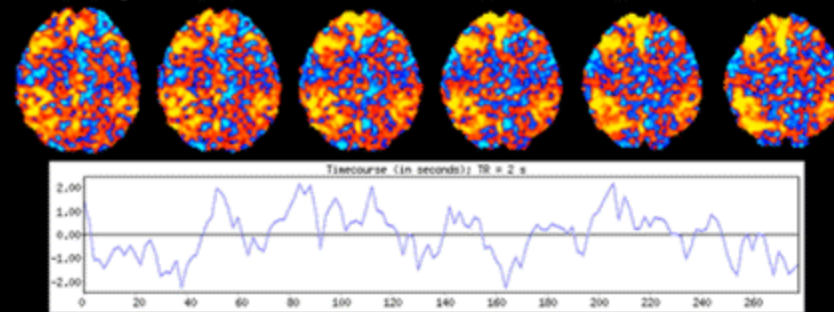
Component 2



Component 3



Component 3



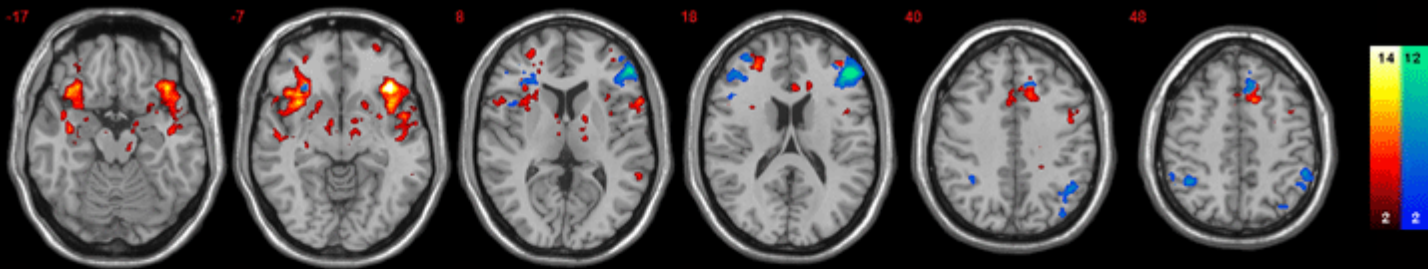
Step 3: Component with highest goodness-of-fit score selected as executive-control component for use in group analyses

Type of file: figure

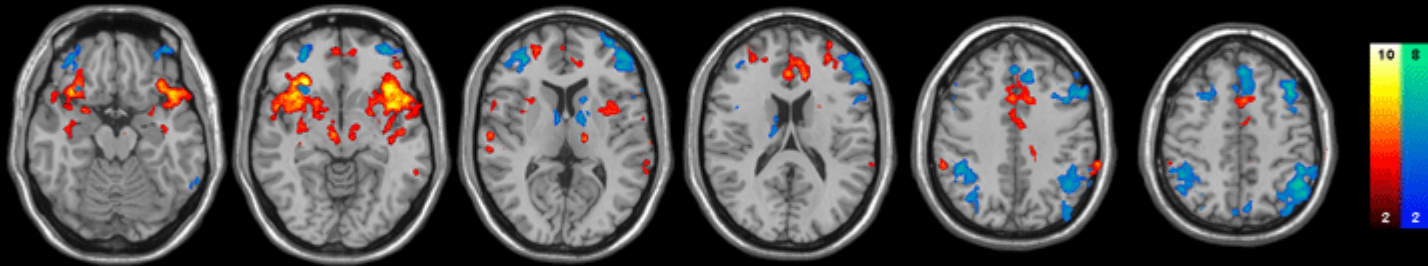
Label: supp fig 2

Filename: Supp_Fig2.gif

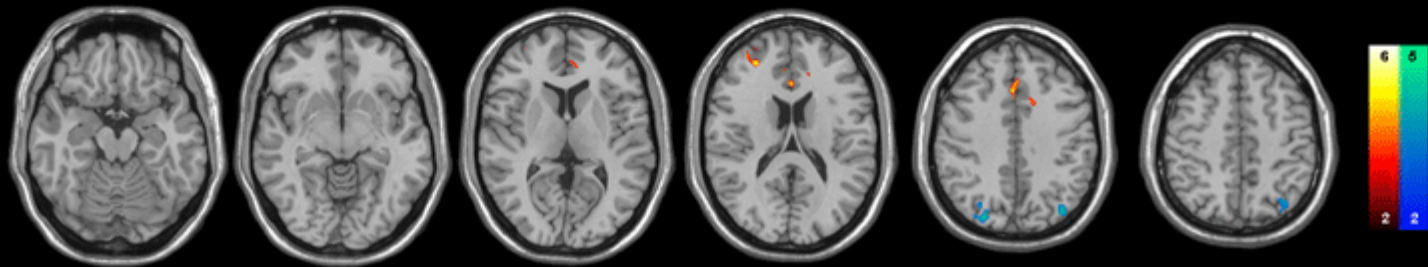
ROI



ICA



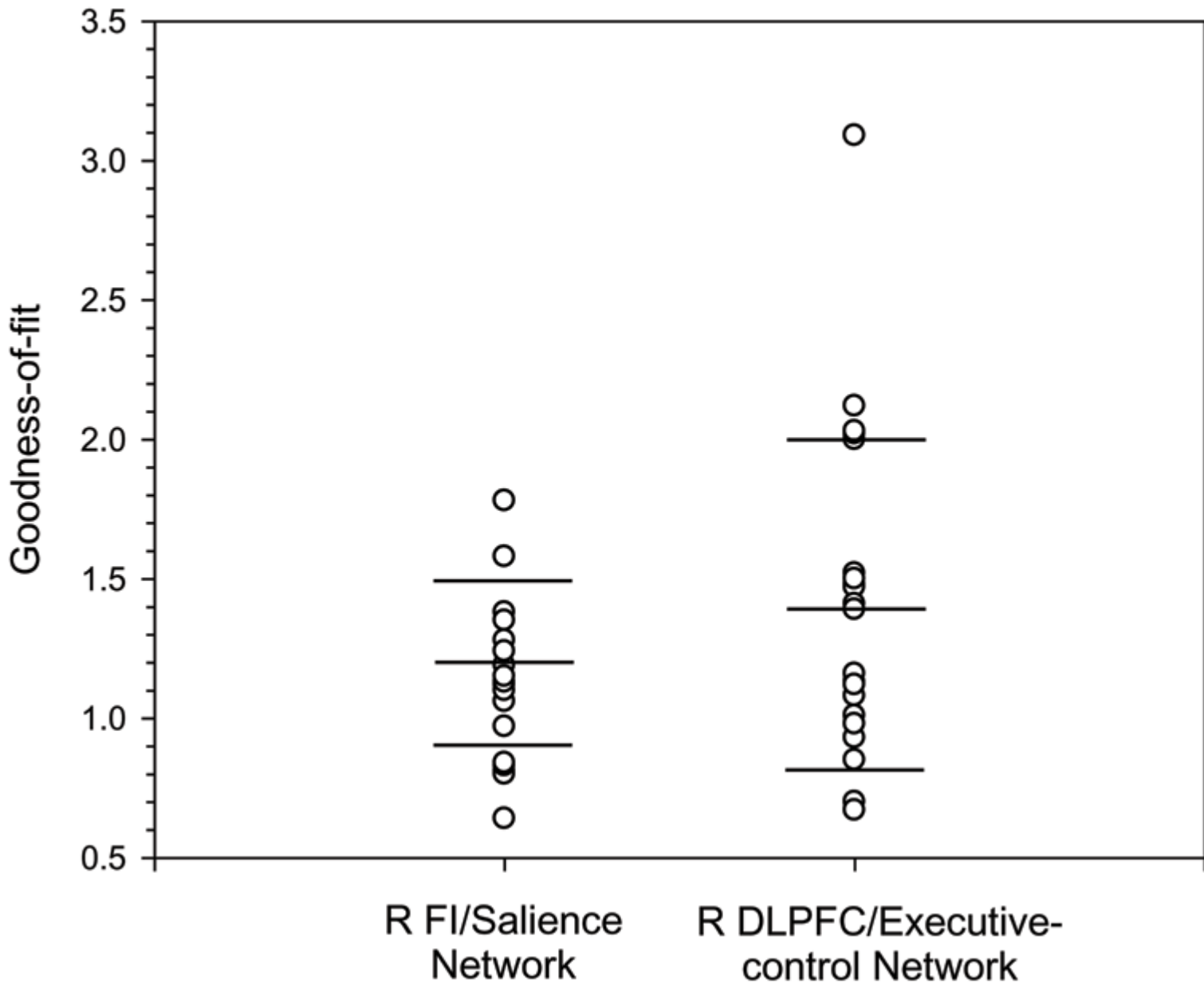
Functional
Correlations



Type of file: figure

Label: supp fig 3

Filename: Supp_Fig3.gif

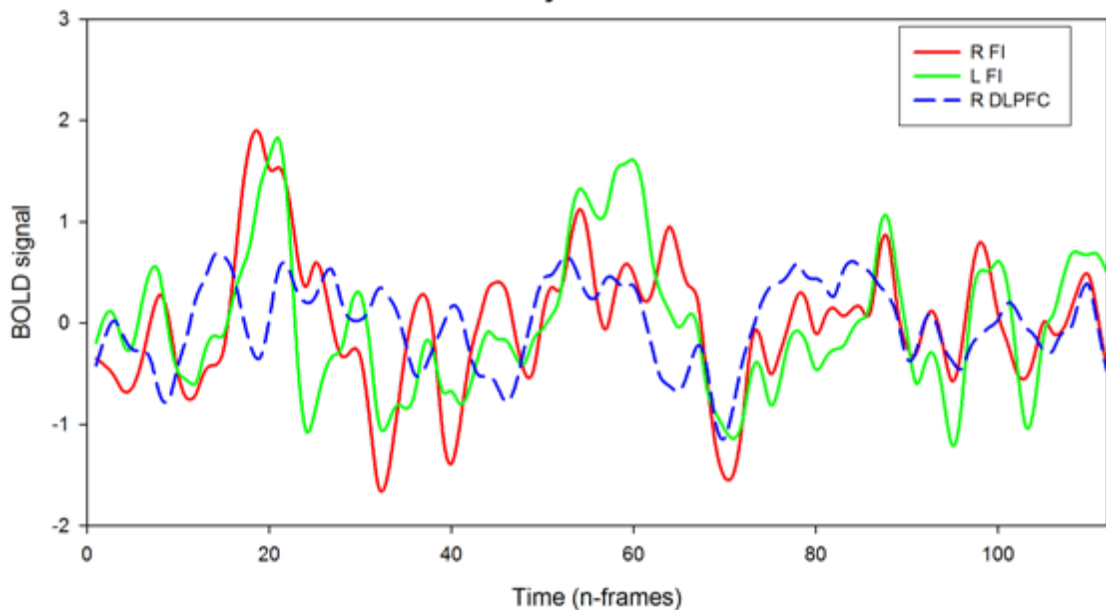


Type of file: figure

Label: supp fig 4

Filename: Supp_Fig4.gif

Subject 13



Subject 14

