

Fig. S5

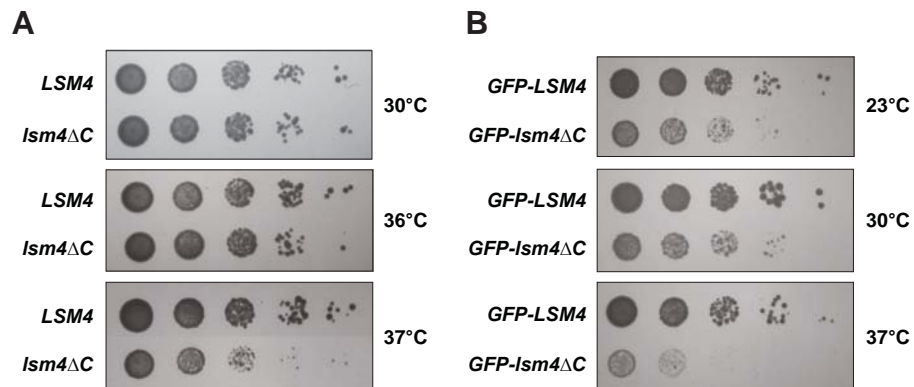


Fig. S5 An N-terminal GFP tag aggravates the slow growth phenotype of the Lsm4p C-terminal deletion strain. **(A)** MRY71 (*LSM4*) and MRY73 (*Ism4ΔC*) strains were grown overnight in YPDA at 30°C, plated in ten-fold serial dilutions on YPDA and grown at 30°C, 36°C and 37°C. **(B)** P_{GAL} -*LSM4* strain (MCY4) with GFP-tagged Lsm4p (pMPSLsm4) or Lsm4ΔCp (pMPS Lsm4D1) was grown overnight in SD-Ura-Met at 30°C, plated in ten-fold serial dilutions on SD-Ura-Met and grown at 23°C, 30°C and 37°C.