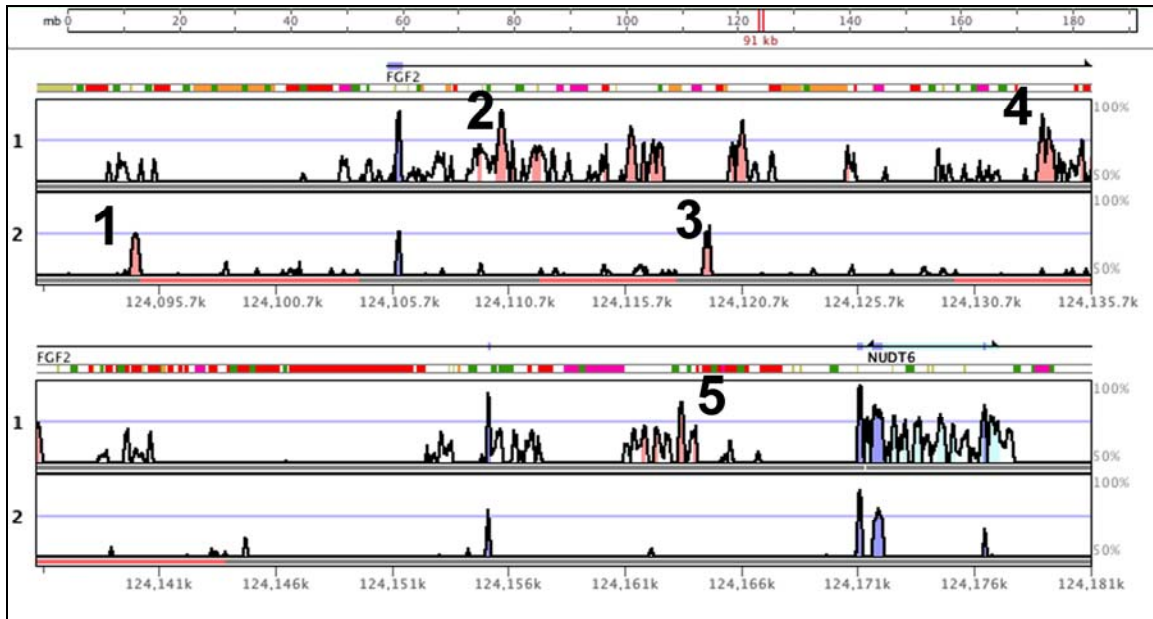


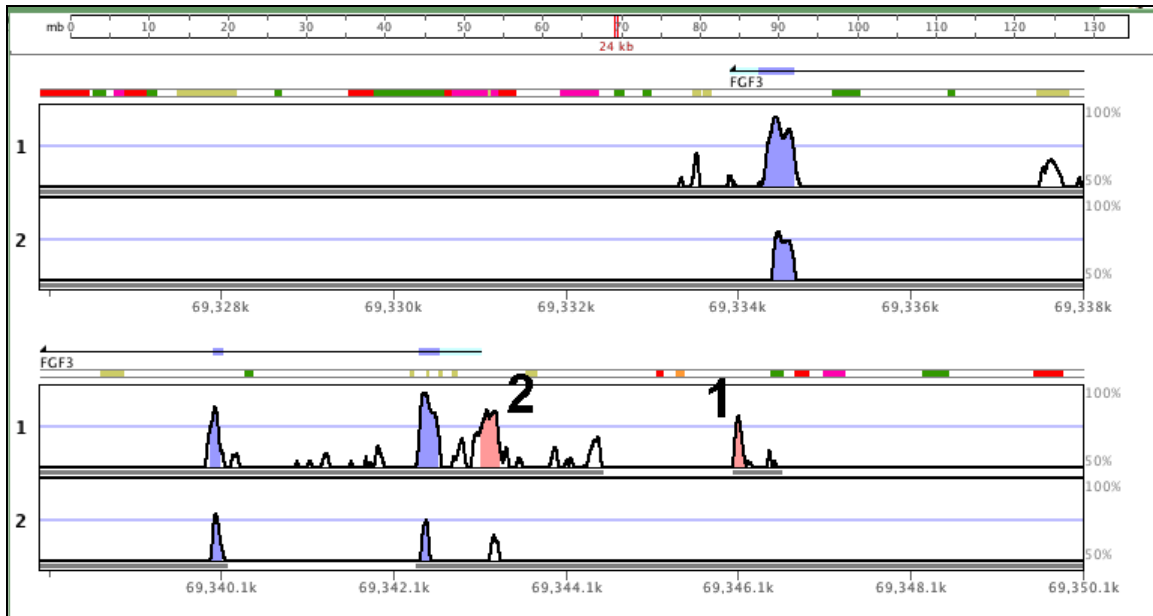
SUPPLEMENTARY FIGURES

Supplementary Figure 1. Vista Genome Browser plot of the FGF2 gene and selected CNEs.



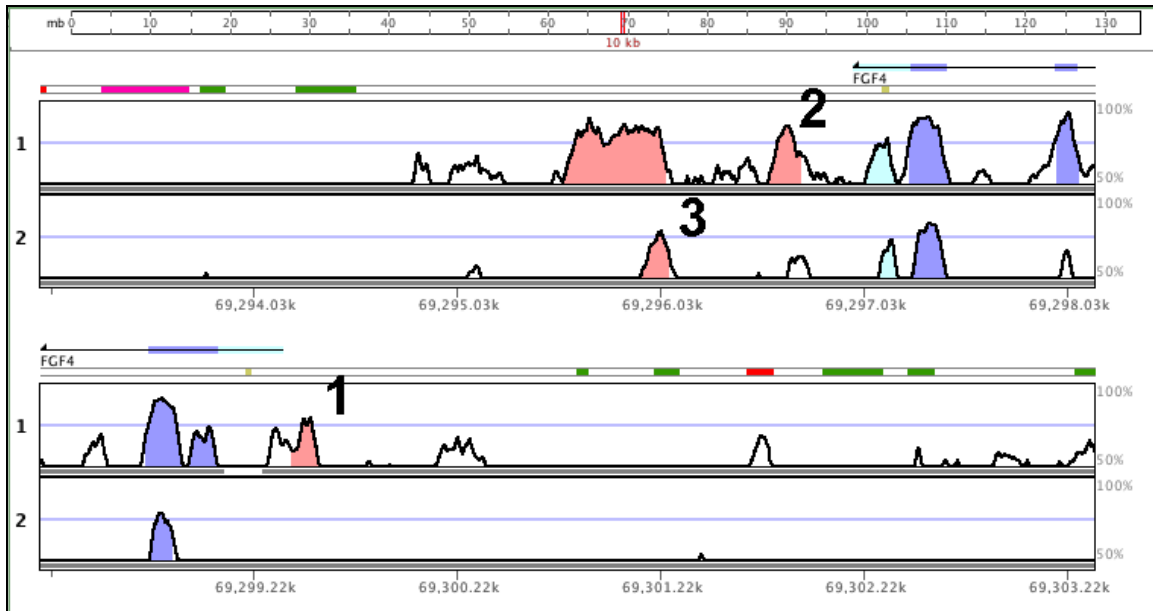
Note: CNEs indicated by number. Line 1 Human-Mouse comparison, line 2 Human-Frog comparison. Pink peaks indicate conserved non-coding sequence. Blue peaks indicate exons. Light green peaks indicate UTRs.

Supplementary Figure 2. Vista Genome Browser plot of the FGF3 gene and selected CNEs.



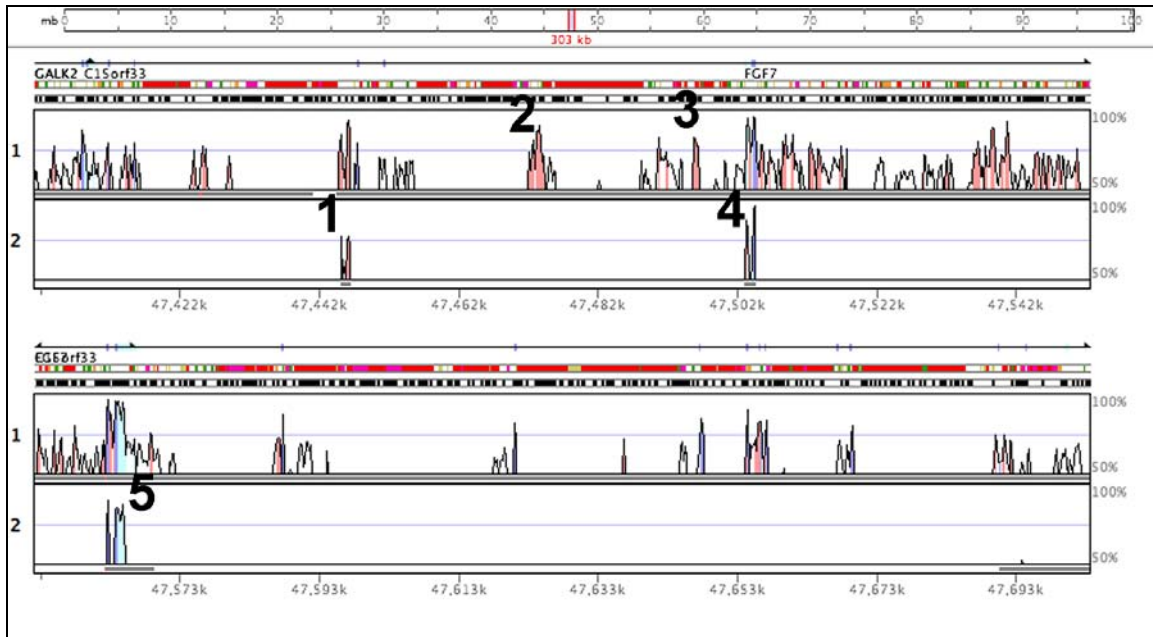
Note: CNEs indicated by number. Line 1 Human-Mouse comparison, line 2 Human-Frog comparison. Pink peaks indicate conserved non-coding sequence. Blue peaks indicate exons. Light green peaks indicate UTRs.

Supplementary Figure 3. Vista Genome Browser plot of the FGF4 gene and selected CNEs.



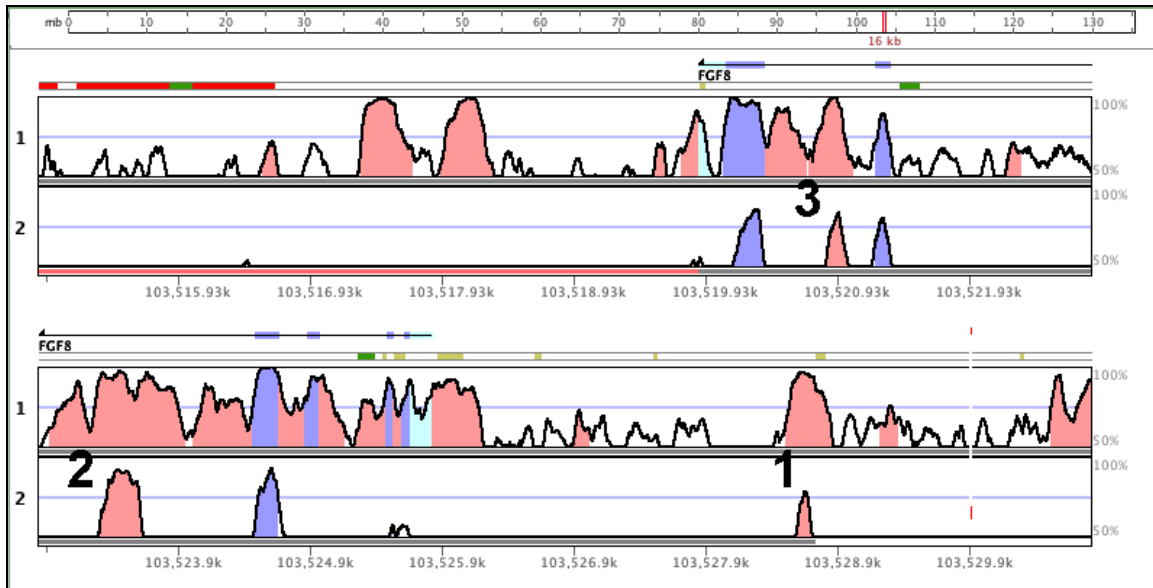
Note: CNEs indicated by number. Line 1 Human-Mouse comparison, line 2 Human-Frog comparison. Pink peaks indicate conserved non-coding sequence. Blue peaks indicate exons. Light green peaks indicate UTRs.

Supplementary Figure 4. Vista Genome Browser plot of the FGF7 gene and selected CNEs.



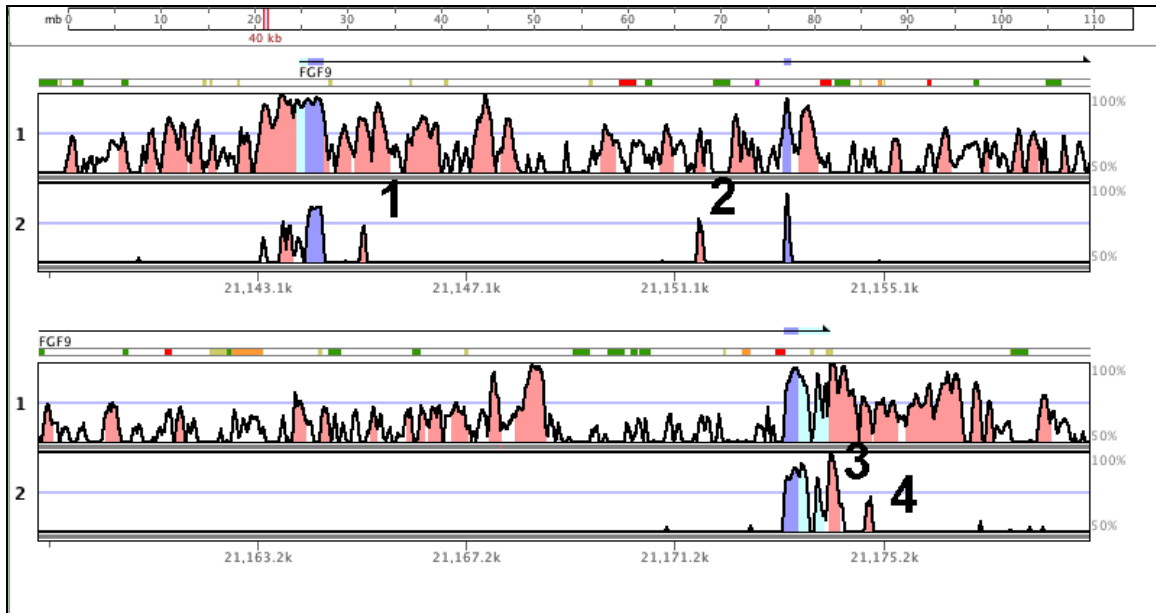
Note: CNEs indicated by number. Line 1 Human-Mouse comparison, line 2 Human-Frog comparison. Pink peaks indicate conserved non-coding sequence. Blue peaks indicate exons. Light green peaks indicate UTRs.

Supplementary Figure 5. Vista Genome Browser plot of the FGF8 gene and selected CNEs.



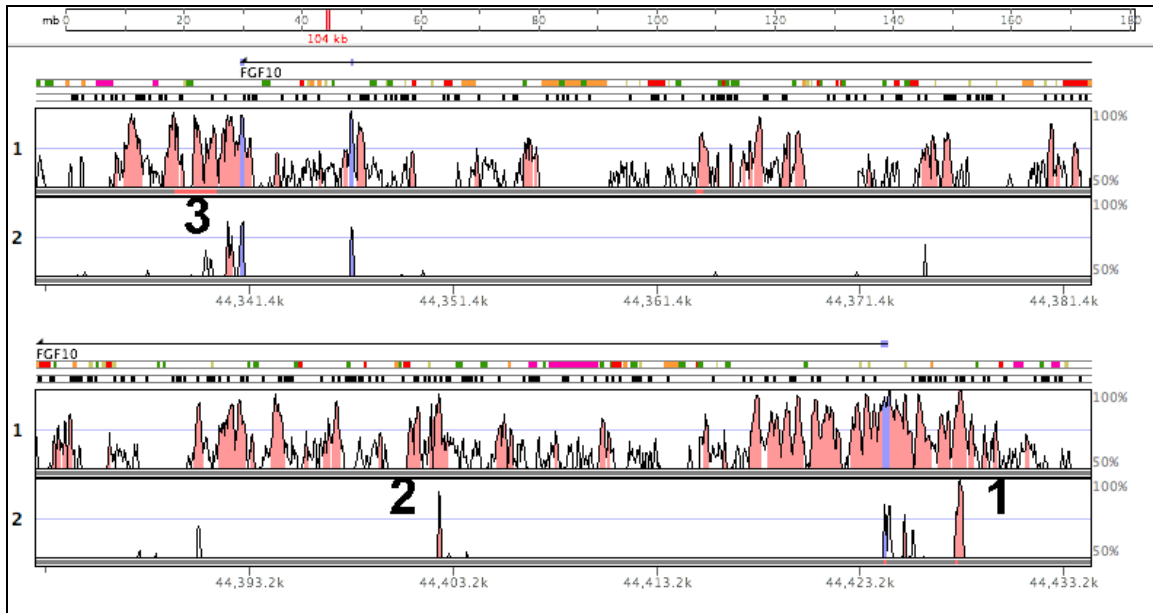
Note: CNEs indicated by number. Line 1 Human-Mouse comparison, line 2 Human-Frog comparison. Pink peaks indicate conserved non-coding sequence. Blue peaks indicate exons. Light green peaks indicate UTRs.

Supplementary Figure 6. Vista Genome Browser plot of the FGF9 gene and selected CNEs.



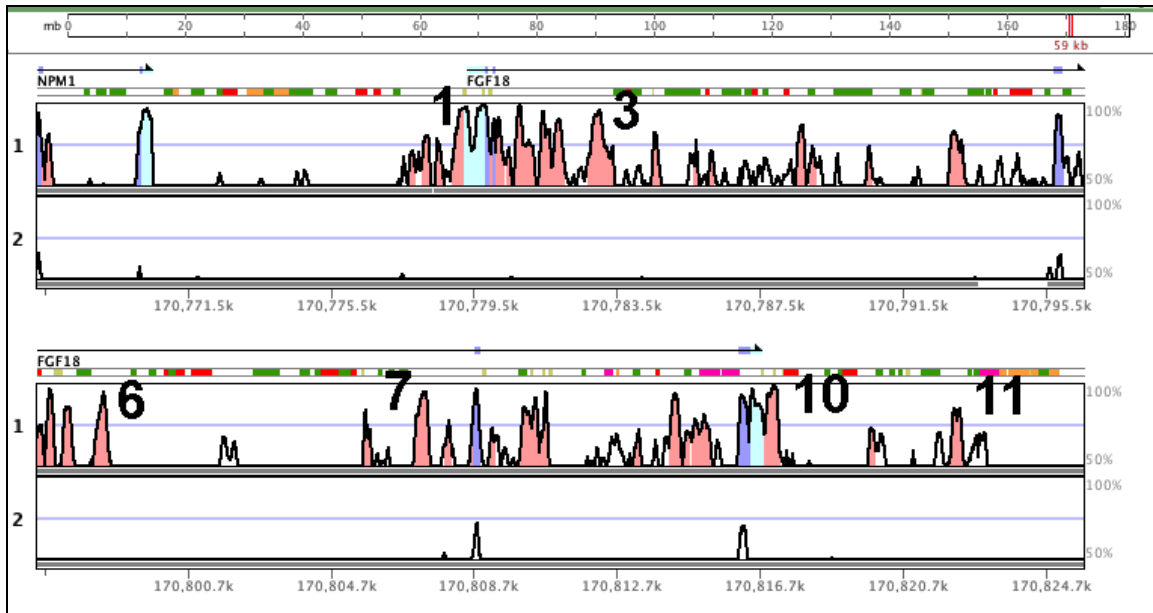
Note: CNEs indicated by number. Line 1 Human-Mouse comparison, line 2 Human-Frog comparison. Pink peaks indicate conserved non-coding sequence. Blue peaks indicate exons. Light green peaks indicate UTRs.

Supplementary Figure 7. Vista Genome Browser plot of the FGF10 gene and selected CNEs.



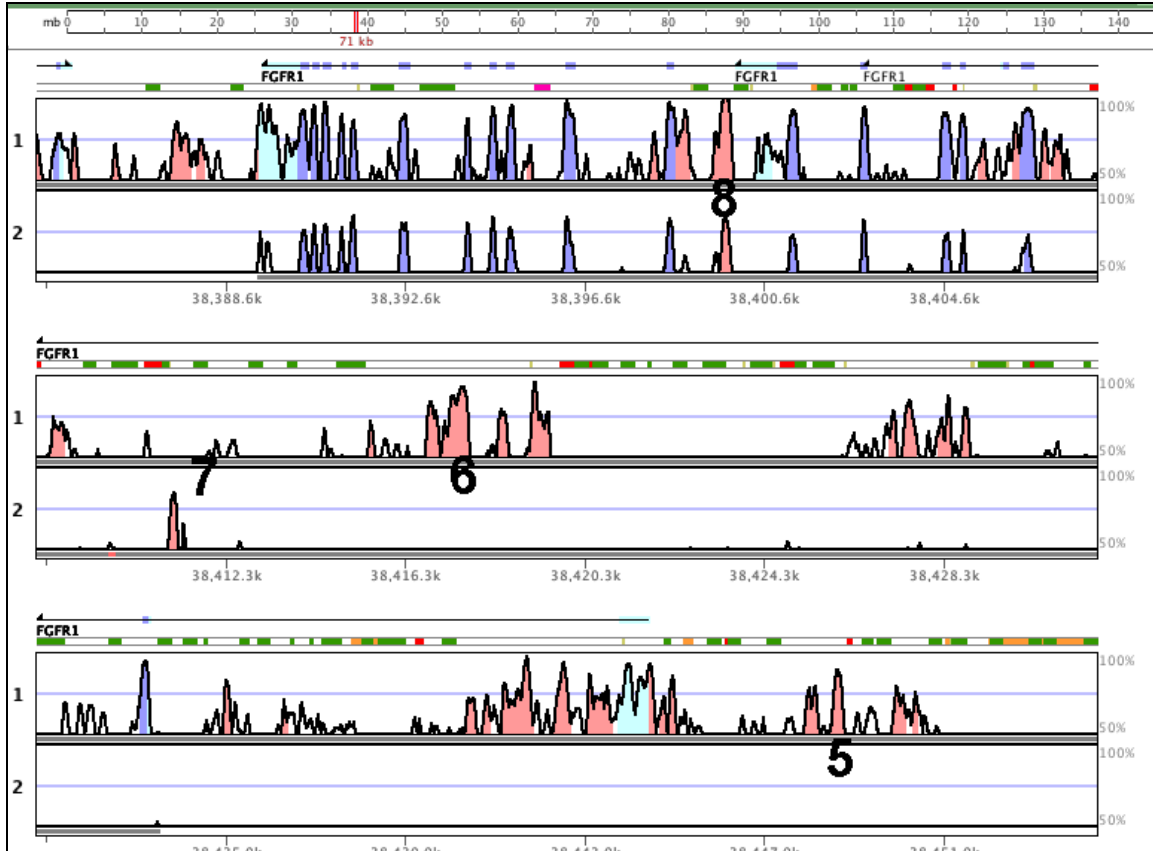
Note: CNEs indicated by number. Line 1 Human-Mouse comparison, line 2 Human-Frog comparison. Pink peaks indicate conserved non-coding sequence. Blue peaks indicate exons. Light green peaks indicate UTRs.

Supplementary Figure 8. Vista Genome Browser plot of the FGF18 gene. and selected CNEs



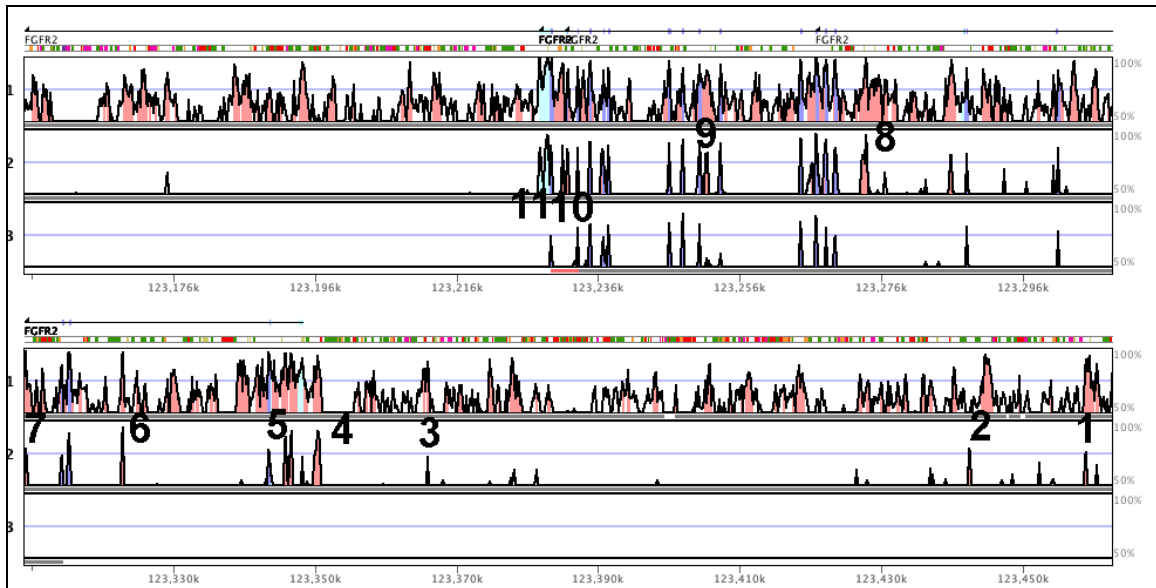
Note: CNEs indicated by number. Line 1 Human-Mouse comparison, line 2 Human-Frog comparison. Pink peaks indicate conserved non-coding sequence. Blue peaks indicate exons. Light green peaks indicate UTRs.

Supplementary Figure 9. Vista Genome Browser plot of the FGFR1 gene and selected CNEs.



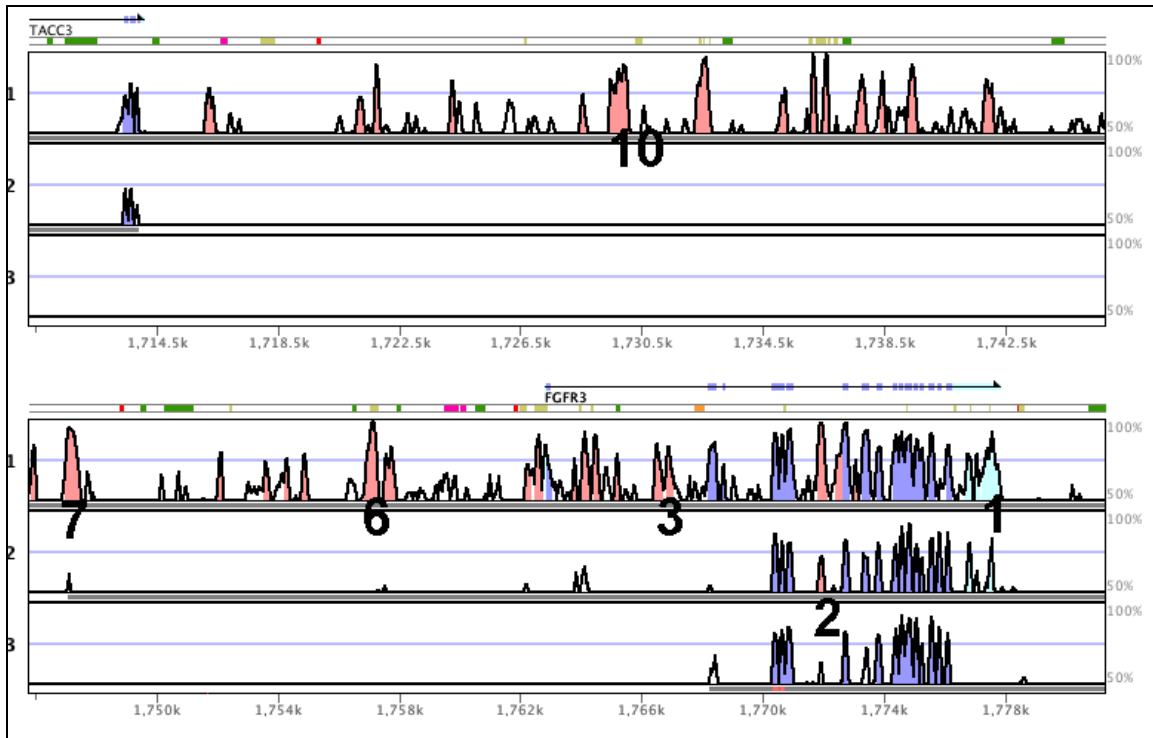
Note: CNEs indicated by number. Line 1 Human-Mouse comparison, line 2 Human-Frog comparison. Pink peaks indicate conserved non-coding sequence. Blue peaks indicate exons. Light green peaks indicate UTRs.

Supplementary Figure 10. Vista Genome Browser plot of the FGFR2 gene and selected CNEs.



Note: CNEs indicated by number. Line 1 Human-Mouse comparison, line 2 Human-Frog comparison. Pink peaks indicate conserved non-coding sequence. Blue peaks indicate exons. Light green peaks indicate UTRs.

Supplementary Figure 11. Vista Genome Browser plot of the FGFR3 gene and selected CNEs.



Note: CNEs indicated by number. Line 1 Human-Mouse comparison, line 2 Human-Frog comparison. Pink peaks indicate conserved non-coding sequence. Blue peaks indicate exons. Light green peaks indicate UTRs.