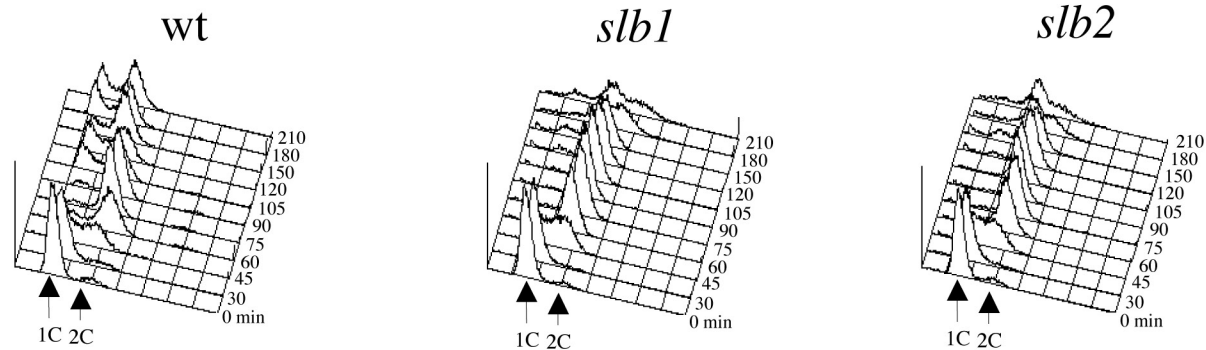
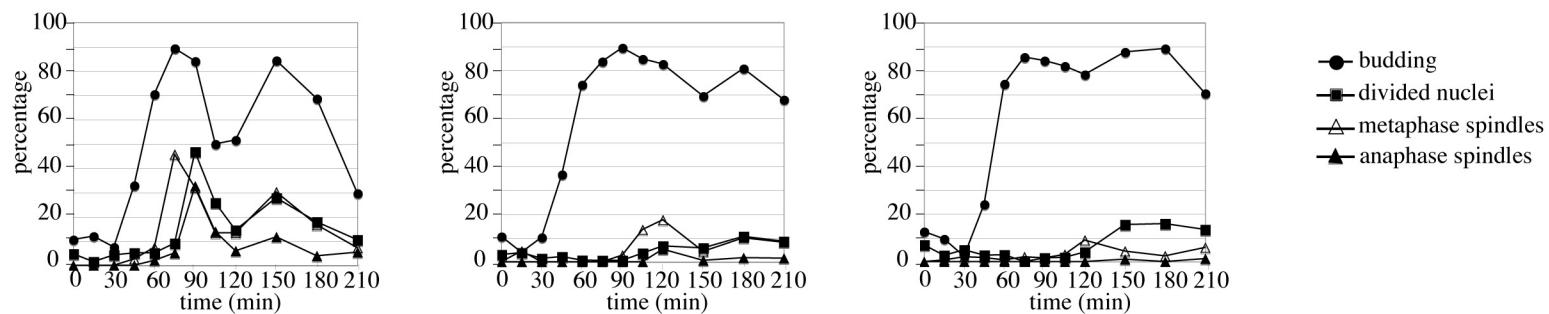
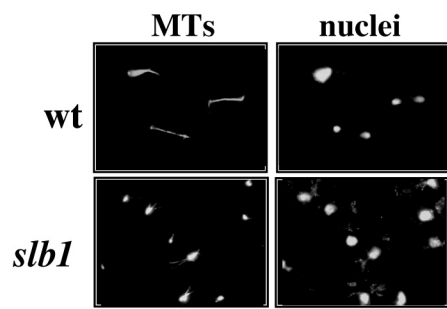
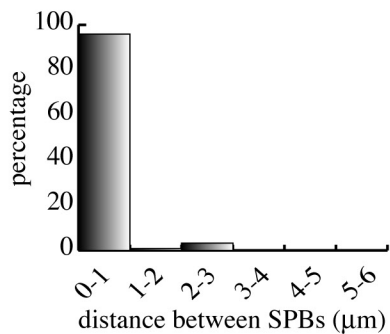
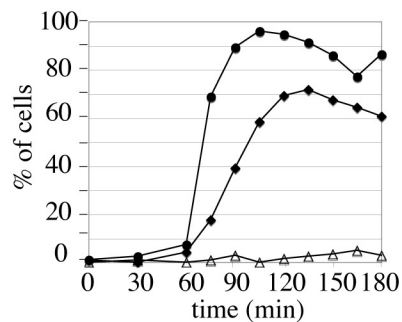


Supplementary Figure S1. *slb* mutants delay bipolar spindle formation and elongation. Logarithmically growing cultures of wild-type, *slb1* (ySP4383) and *slb2* (ySP4419) strains were arrested in G1 by α -factor at 25°C and then released at time 0 into YPD medium at 37°C. At the indicated time points samples were taken for (A) FACS analysis of DNA content and (B) to follow kinetics of budding, nuclear division and mitotic spindle assembly/elongation. (C) Micrographs were taken 90' after release.

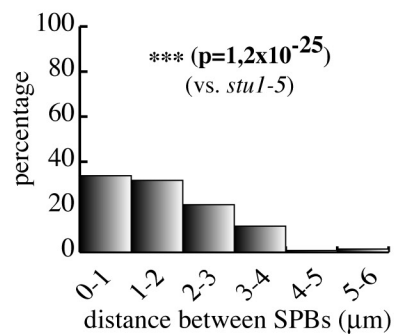
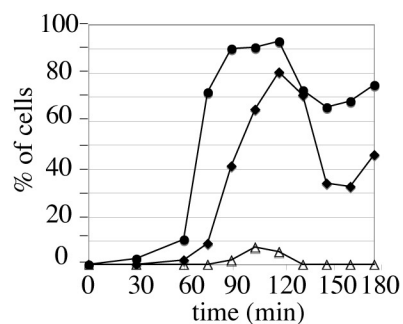
Supplementary Figure S2. *CLB2* overexpression partially suppresses the effects of SAC inactivation on SPB separation in *stu1-5* cells. *stu1-5* (ySP6892), *stu1-5 mad2Δ* (ySP6625), *stu1-5 mad2Δ GAL1-CLB2Δdb* (ySP7653) cells were grown in YEPR, arrested in G1 with α factor at 25°C and released in YEPRG at 37°C. Samples were collected at the indicated times to follow kinetics of budding, SPB separation and mitotic spindle formation. Distances between SPBs were measured 120' after release.

A**B****C**

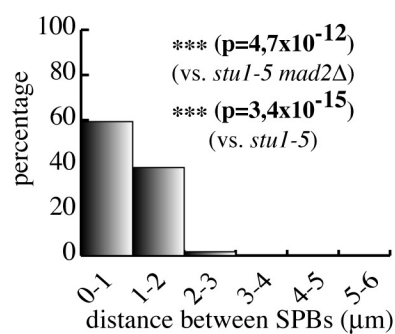
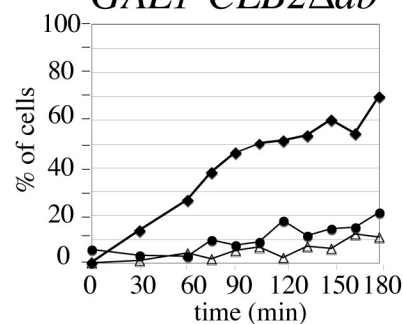
stu1-5



stu1-5 mad2Δ



stu1-5 mad2Δ GAL1-CLB2Δdb



● budding
◆ separated SPBs
△ bipolar spindles

Supplementary Table I. Strains used in this study

Name	Relevant genotype
ySP1804	<i>MATa, stu1-5, spc42AI::LEU2, TRP1::SPC42-GFP (3X)</i>
ySP1856	<i>MATa, stu1-5, spc42AI::LEU2, TRP1::SPC42-GFP (3X), mad2::TRP1</i>
ySP4383	<i>MATa, slb1</i>
ySP4419	<i>MATa, slb2</i>
ySP4595	<i>MATa, stu1-5, spc42AI::LEU2, TRP1::SPC42-GFP (3X), mad3::TRP1 (Kl. lactis)</i>
ySP4935	<i>MATa, TRP1::SPC42-GFP</i>
ySP5360	<i>MATa, bub3::bub3WDdl::URA3, TRP1::SPC42-GFP, cin8-3, kip1::HIS3</i>
ySP5361	<i>MATa, TRP1::SPC42-GFP, cin8-3, kip1::HIS3</i>
ySP5363	<i>MATa, cin8-3, kip1::HIS3, TRP1::SPC42-GFP, mad3::TRP1</i>
ySP5364	<i>MATa, cin8-3, kip1::HIS3, TRP1::SPC42-GFP, mad2::TRP1</i>
ySP5366	<i>MATa, cin8-3, kip1::HIS3, TRP1::SPC42-GFP, CDC20-107 on YCplac33</i>
ySP6194	<i>MATa, stu1-5, spc42AI::LEU2, TRP1::SPC42-GFP (3X), CDC20-107 on YCplac33</i>
ySP6202	<i>MATa, stu1-5, spc42AI::LEU2, TRP1::SPC42-GFP (3X), bub3::bub3WDdl::URA3</i>
ySP6204	<i>MATa, stu1-5, TRP1::SPC42-GFP (3X), bub3::bub3WDdl::URA</i>
ySP6583	<i>MATa, stu1-5, TRP1::SPC42-GFP (3X), mad2::TRP1, cdc14-3</i>
ySP6605	<i>MATa, stu1-5, TRP1::SPC42-GFP (3X), mad2::TRP1, dyn1::URA3</i>
ySP6625	<i>MATa, stu1-5, TRP1::SPC42-GFP (3X), mad2::TRP1</i>
ySP6665	<i>MATa, stu1-5, TRP1::SPC42-GFP (3X), mad2::TRP1, cdc20-3</i>
ySP6789	<i>MATa, stu1-5, TRP1::SPC42-GFP, mad3::TRP1 (Kl. lactis), cdc20-3</i>
ySP6891	<i>MATa, stu1-5, TRP1::SPC42-GFP, mad3::TRP1 (Kl. lactis)</i>
ySP6892	<i>MATa, stu1-5, TRP1::SPC42-GFP (3X)</i>
ySP7068	<i>MATa, stu1-5, TRP1::SPC42-GFP (3X), pds1::URA3</i>
ySP7211	<i>MATa, stu1-5, TRP1::SPC42-GFP (3X), mad2::TRP1, cdc16-1</i>
ySP7469	<i>MATa, bub3::bub3WDdl::URA3, stu1-5, cdc5 (msd2-1::URA3), TRP1::SPC42-GFP</i>
ySP7572	<i>MATa, stu1-5, TRP1::SPC42-GFP (3X), mad2::TRP1, leu2::LEU2 GAL-PDS1mdb-myc18</i>

ySP7653 *MATa, stu1-5, TRP1::SPC42-GFP (3X), mad2::TRP1, ura3::GAL1-CLB Δ db::URA3*
ySP7773 *MATa, cin8-3, kip1::HIS3, TRP1::SPC42-GFP, 3X GAL1-CDC14::URA3*
ySP7926 *MATa, stu1-5, TRP1::SPC42-GFP (3X), mad2::TRP1, swe1::LEU2*
ySP7981 *MATa, stu1-5, TRP1::SPC42-GFP (3X), mad2::TRP1, cdc14-1*
ySP7828 *MATa, stu1-5, TRP1::SPC42-GFP (3X), mad2::TRP1, esp1-1*