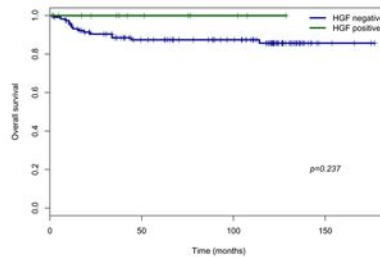
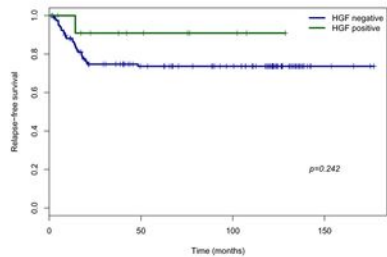


**Supplementary Figure S2** – *Clinical associations of HGF and Met expression in favourable histology Wilms tumours.* Kaplan-Meier curves and associated p values (logrank test) for overall and relapse-free survival for HGF and/or Met expression in favourable histology Wilms tumours on a tissue microarray.

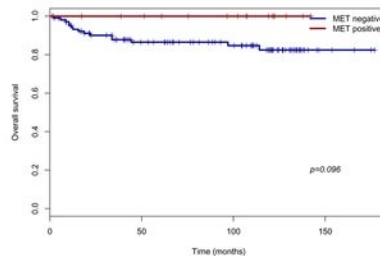
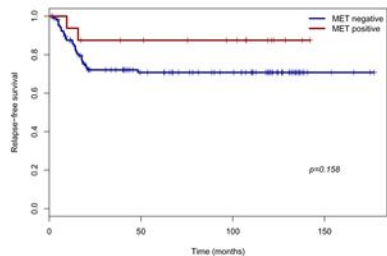
# Supplementary Figure S2

## Relapse-free survival

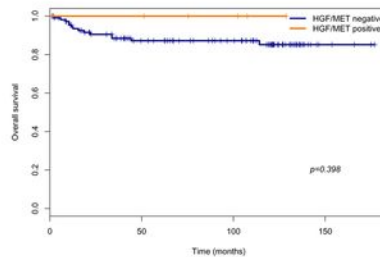
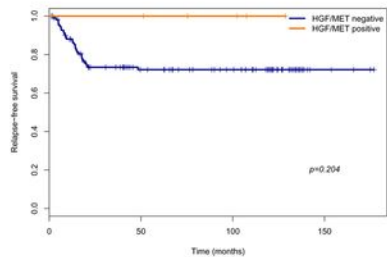
## Overall survival



HGF



MET



HGF/MET  
coexpression

**Supplementary Table S1** – *Clinical correlations for HGF and MET expression in favourable histology Wilms tumours.* Wilms tumour cases from the tissue microarray are stratified according to cellular component, with p values are calculated for relapse-free (RFS) and overall survival (OS) (logrank test).

	<i>HGF</i>			<i>MET</i>			<i>HGF/MET coexpression</i>		
	<i>Positive</i>	<i>RFS</i>	<i>OS</i>	<i>Positive</i>	<i>RFS</i>	<i>OS</i>	<i>Positive</i>	<i>RFS</i>	<i>OS</i>
WT blastemal	3/101 (3%)	p=0.414	p=0.582	3/98 (3%)	p=0.463	p=0.282	2/98 (2%)	p=0.427	p=0.661
WT epithelial	7/80 (9%)	p=0.259	p=0.446	8/81 (10%)	p=0.196	p=0.371	3/77 (4%)	p=0.194	p=0.304
WT stromal	6/92 (7%)	p=0.853	p=0.533	10/85 (12%)	p=0.631	p=0.471	4/83 (5%)	p=0.059	NA
WT any	15/193 (8%)	p=0.242	p=0.237	25/179(14%)	p=0.158	p=0.096	6/171 (4%)	p=0.204	p=0.398