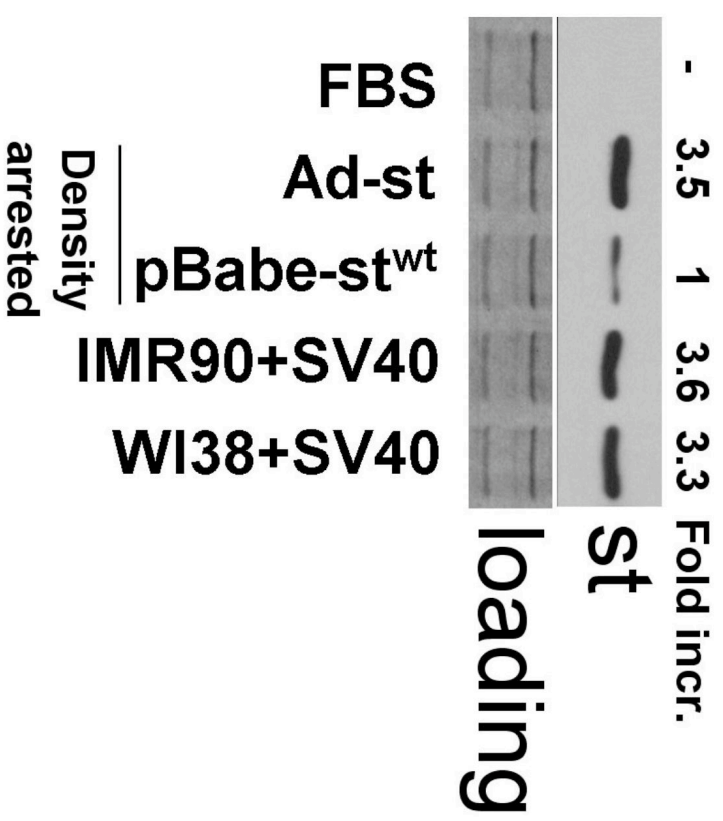


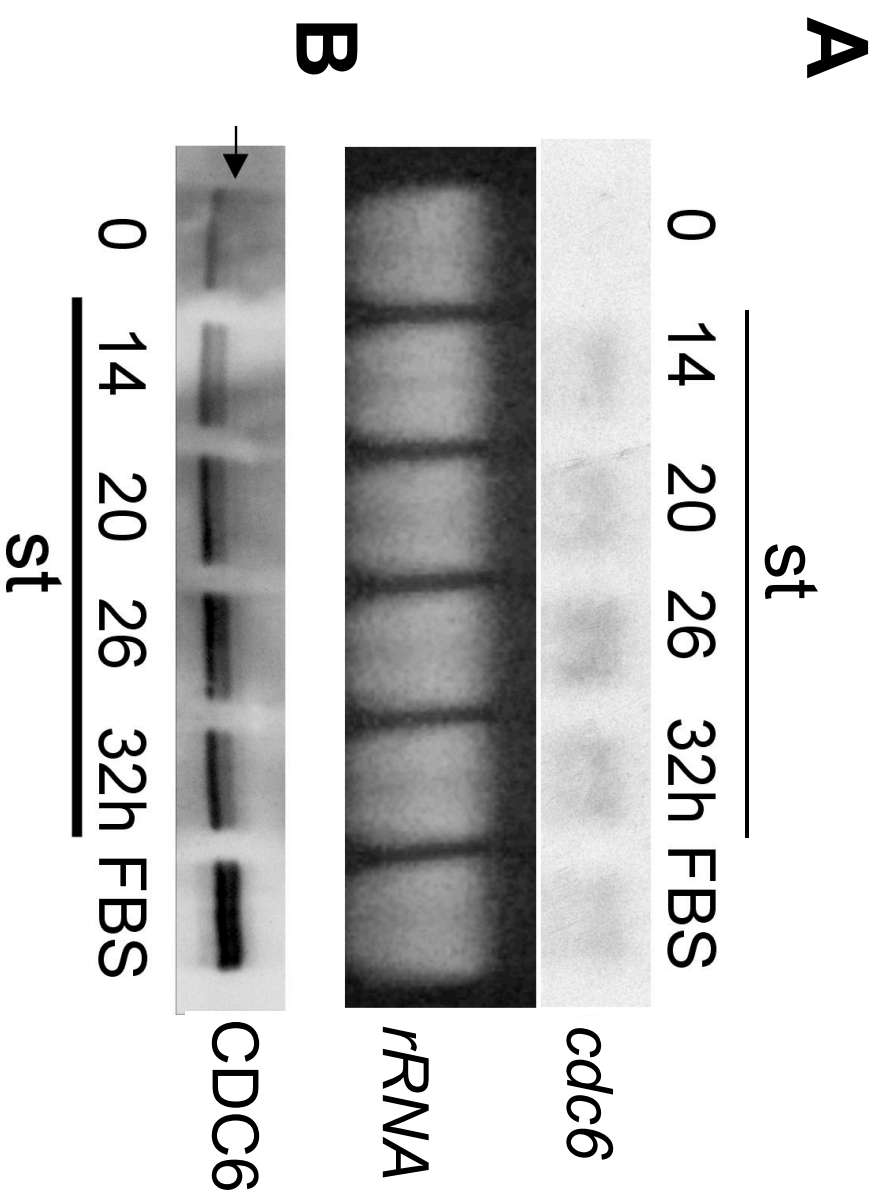
SUPPLEMENTARY FIGURE LEGENDS

Supplementary Fig. 1. Adenoviral mediated expression of st in density arrested BJ-TERT cells is comparable to st expression in NHF immortalized via infection with SV40 viruses. Protein lysates from exponentially growing, density arrested BJ-hTERT cells transduced with 40 MOI of Ad-st or infected with pBabe-st retroviruses and NHF infected with SV40 viruses were assayed by WB.

Supplementary Fig. 2. St induced expression of CDC6 mRNA and protein with similar kinetics. BJ-hTERT cells were grown to high density and transduced with adenovirus expressing st or maintained exponentially growing (FBS). Cells were harvested at indicated time points after transduction and duplicates of each sample were analyzed by northern (A) and western (B) blot analyses.



Supplementary Fig. 1



Supp.2