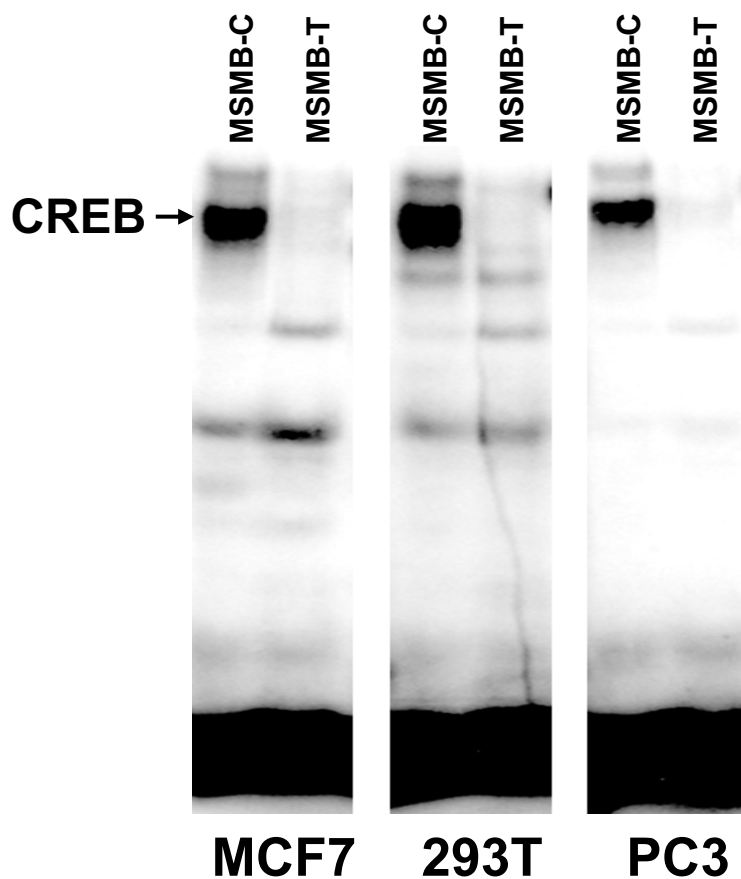


# Supporting Information

Lou et al. 10.1073/pnas.0902104106



**Fig. S1.** Electrophoretic mobility shift assay analysis performed on MCF7, 293T, and PC3 nuclear extracts corresponding to the CREB binding site of the *MSMB* promoter.

**Table S1. Quality control measures for *MSMB* SNPs**

Locus	CPS-II		ATBC study		CeRePP study		HPFS		PHS	
	Completion	HWP <i>P</i>	Completion	HWP <i>P</i>	Completion	HWP <i>P</i>	Completion	HWP <i>P</i>	Completion	HWP <i>P</i>
rs11004422	92.97	0.46	93.30	0.72	—	—	97.80	0.17	99.32	0.85
rs7071471	88.97	0.65	93.35	0.66	—	—	95.60	0.19	97.19	0.07
rs11593319	89.61	0.09	91.39	0.60	—	—	94.95	0.04	97.30	0.04
rs10826075	87.47	0.74	92.82	1.00	—	—	94.21	0.71	97.14	0.00
rs4630240	88.22	0.92	93.14	0.01	—	—	95.19	0.31	92.00	0.52
rs11006207	97.86	0.31	99.73	0.78	99.77	0.50	99.92	0.63	99.84	0.56
rs10826223	99.06	0.89	99.89	0.27	99.92	0.06	98.37	0.67	95.63	0.00
rs10993994	99.00	0.76	99.95	0.61	99.85	0.43	98.86	0.87	96.47	0.05
rs7076948	89.80	0.42	93.41	0.55	—	—	95.03	0.86	97.77	0.06
rs10994470	90.36	0.53	93.78	1.00	—	—	95.68	1.00	98.39	0.22
rs7904463	98.64	0.23	99.68	0.27	95.51	0.37	97.72	0.71	96.67	0.00
rs17178655	88.94	0.51	93.25	0.60	—	—	95.68	1.00	95.27	0.00
rs10994675	99.17	0.12	100.00	0.25	99.62	0.45	100.00	0.33	95.95	0.00



Table S3. Association results per study

Locus	Alleles	MAF	Subjects	Dichotomous		df	Het OR	95% CI	Hom OR	95% CI
				$\chi^2$	P					
American Cancer Society										
rs11004422	T, C	0.49	1,651 1,640	9.23	0.0099	2	1.04	(0.88–1.24)	1.31	(1.08–1.59)
rs7071471	C, T	0.47	1,573 1,583	16.96	2.07E-04	2	1.18	(1.00–1.40)	1.51	(1.24–1.85)
rs11593319	G, T	0.06	1,587 1,590	1.03	0.5980	2	0.96	(0.77–1.20)	0.63	(0.24–1.63)
rs10826075	C, G	0.27	1,551 1,551	4.89	0.0866	2	1.10	(0.95–1.27)	1.35	(1.01–1.79)
rs4630240	C, T	0.38	1,561 1,568	10.79	0.0045	2	0.92	(0.79–1.07)	0.69	(0.55–0.86)
rs11006207	C, T	0.48	1,749 1,721	25.09	3.56E-06	2	1.16	(0.99–1.36)	1.61	(1.33–1.95)
rs10826223	G, A	0.09	1,763 1,761	1.63	0.4419	2	0.93	(0.78–1.11)	0.67	(0.31–1.44)
rs10993994	C, T	0.42	1,760 1,757	44.12	2.63E-10	2	1.31	(1.12–1.52)	1.94	(1.59–2.36)
rs7076948	T, C	0.38	1,593 1,591	5.53	0.0629	2	1.05	(0.90–1.22)	1.29	(1.04–1.60)
rs10994470	G, A	0.04	1,601 1,602	1.54	0.2145	1	0.85	(0.66–1.10)	0.72	(0.43–1.21)
rs7904463	C, T	0.33	1,752 1,753	3.37	0.1856	2	1.11	(0.96–1.28)	1.19	(0.95–1.48)
rs17178655	G, A	0.23	1,573 1,582	0.84	0.6573	2	1.07	(0.92–1.24)	1.07	(0.78–1.47)
rs10994675	G, A	0.43	1,767 1,756	10.00	0.0067	2	1.22	(1.05–1.42)	1.30	(1.07–1.57)
ATBC study										
rs11004422	T, C	0.42	846 879	4.05	0.1322	2	1.05	(0.85–1.30)	1.32	(1.00–1.74)
rs7071471	C, T	0.39	850 875	3.75	0.1537	2	1.07	(0.87–1.32)	1.32	(1.00–1.76)
rs11593319	G, T	0.10	829 860	6.46	0.0395	2	0.74	(0.58–0.96)	1.50	(1.04–3.64)
rs10826075	C, G	0.20	842 873	0.52	0.7705	2	1.08	(0.88–1.32)	0.97	(0.58–1.63)
rs4630240	C, T	0.43	848 873	7.90	0.0192	2	0.74	(0.60–0.92)	0.90	(0.68–1.19)
rs11006207	C, T	0.39	918 928	3.70	0.1569	2	1.09	(0.89–1.33)	1.31	(0.99–1.73)
rs10826223	G, A	0.13	920 928	3.16	0.2064	2	0.82	(0.65–1.02)	0.93	(0.50–1.73)
rs10993994	C, T	0.36	921 928	5.96	0.0508	2	1.14	(0.94–1.39)	1.42	(1.07–1.89)
rs7076948	T, C	0.34	850 876	0.07	0.9633	2	0.98	(0.80–1.20)	1.03	(0.75–1.41)
rs10994470	G, A	0.03	853 880	1.35	0.2448	1	0.78	(0.51–1.19)	0.61	(0.26–1.42)
rs7904463	C, T	0.29	917 927	2.65	0.2657	2	0.90	(0.74–1.09)	1.17	(0.83–1.64)
rs17178655	G, A	0.18	848 875	6.54	0.0379	2	0.77	(0.63–0.95)	0.75	(0.44–1.28)
rs10994675	G, A	0.36	921 929	1.98	0.3722	2	1.00	(0.82–1.22)	1.21	(0.91–1.60)
CeRePP study										
rs11004422										
rs7071471										
rs11593319										
rs10826075										
rs4630240										
rs11006207	C, T	0.49	655 655	1.95	0.3779	2	0.83	(0.64–1.09)	0.84	(0.61–1.16)
rs10826223	G, A	0.07	656 656	6.78	0.0337	2	1.25	(0.90–1.73)	5.04	(1.08–23.55)
rs10993994	C, T	0.43	655 656	2.06	0.3566	2	0.86	(0.67–1.10)	1.02	(0.75–1.40)
rs7076948										
rs10994470										
rs7904463	C, T	0.35	627 627	4.30	0.1164	2	0.83	(0.65–1.05)	0.72	(0.50–1.03)
rs17178655										
rs10994675	G, A	0.44	654 654	3.03	0.2197	2	0.80	(0.62–1.03)	0.90	(0.66–1.23)
HPFS										
rs11004422	T, C	0.50	600 581	8.94	0.0114	2	0.98	(0.74–1.30)	1.48	(1.06–2.07)
rs7071471	C, T	0.47	588 565	10.65	0.0049	2	0.98	(0.74–1.29)	1.58	(1.13–2.21)
rs11593319	G, T	0.07	585 560	3.59	0.0580	1	0.72	(0.51–1.01)	0.52	(0.26–1.03)
rs10826075	C, G	0.23	583 553	4.75	0.0932	2	1.17	(0.91–1.50)	1.72	(0.99–2.99)
rs4630240	C, T	0.38	588 561	7.73	0.0209	2	0.73	(0.57–0.94)	0.67	(0.47–0.97)
rs11006207	C, T	0.47	611 595	9.43	0.0090	2	1.11	(0.85–1.45)	1.62	(1.17–2.24)
rs10826223	G, A	0.10	611 596	0.88	0.6437	2	0.87	(0.64–1.17)	1.02	(0.38–2.76)
rs10993994	C, T	0.42	603 590	8.59	0.0136	2	1.11	(0.86–1.44)	1.64	(1.17–2.30)
rs7076948	T, C	0.38	586 560	0.41	0.8149	2	0.97	(0.75–1.25)	1.08	(0.76–1.54)
rs10994470	G, A	0.04	589 565	2.72	0.0990	1	1.46	(0.93–2.31)	2.14	(0.86–5.34)
rs7904463	C, T	0.33	600 579	1.96	0.3762	2	0.98	(0.77–1.25)	1.28	(0.87–1.88)
rs17178655	G, A	0.21	589 565	0.64	0.7273	2	1.02	(0.80–1.32)	1.26	(0.72–2.21)
rs10994675	G, A	0.43	611 596	1.18	0.5555	2	0.91	(0.70–1.17)	1.06	(0.77–1.46)
PHS										
rs11004422	T, C	0.49	980 931	16.46	2.67E-04	2	1.25	(1.00–1.56)	1.68	(1.30–2.18)
rs7071471	C, T	0.48	952 918	13.31	0.0013	2	1.11	(0.89–1.38)	1.55	(1.21–1.99)
rs11593319	G, T	0.06	958 914	4.33	0.1146	2	0.74	(0.55–1.00)	0.67	(0.24–1.89)
rs10826075	C, G	0.28	954 915	2.06	0.3574	2	1.01	(0.83–1.23)	1.25	(0.92–1.71)
rs4630240	C, T	0.35	895 875	19.66	5.39E-05	2	0.68	(0.56–0.83)	0.58	(0.43–0.79)
rs11006207	C, T	0.49	983 938	20.63	3.31E-05	2	1.22	(0.98–1.51)	1.78	(1.38–2.30)
rs10826223	G, A	0.08	933 907	1.56	0.4576	2	0.98	(0.74–1.30)	1.51	(0.78–2.94)
rs10993994	C, T	0.43	950 906	21.46	2.19E-05	2	1.26	(1.02–1.55)	1.83	(1.41–2.36)
rs7076948	T, C	0.39	959 922	4.36	0.1129	2	1.09	(0.89–1.33)	1.32	(1.02–1.72)
rs10994470	G, A	0.04	970 923	0.43	0.5119	1	0.90	(0.65–1.24)	0.81	(0.42–1.54)
rs7904463	C, T	0.34	957 903	2.14	0.3432	2	1.11	(0.91–1.35)	1.20	(0.91–1.59)
rs17178655	G, A	0.21	934 899	6.73	0.0345	2	1.07	(0.87–1.32)	0.64	(0.44–0.93)
rs10994675	G, A	0.43	945 901	0.38	0.8257	2	1.01	(0.82–1.25)	1.08	(0.84–1.38)

Het, heterozygous; Hom, homozygous, OR, odds ratio.

