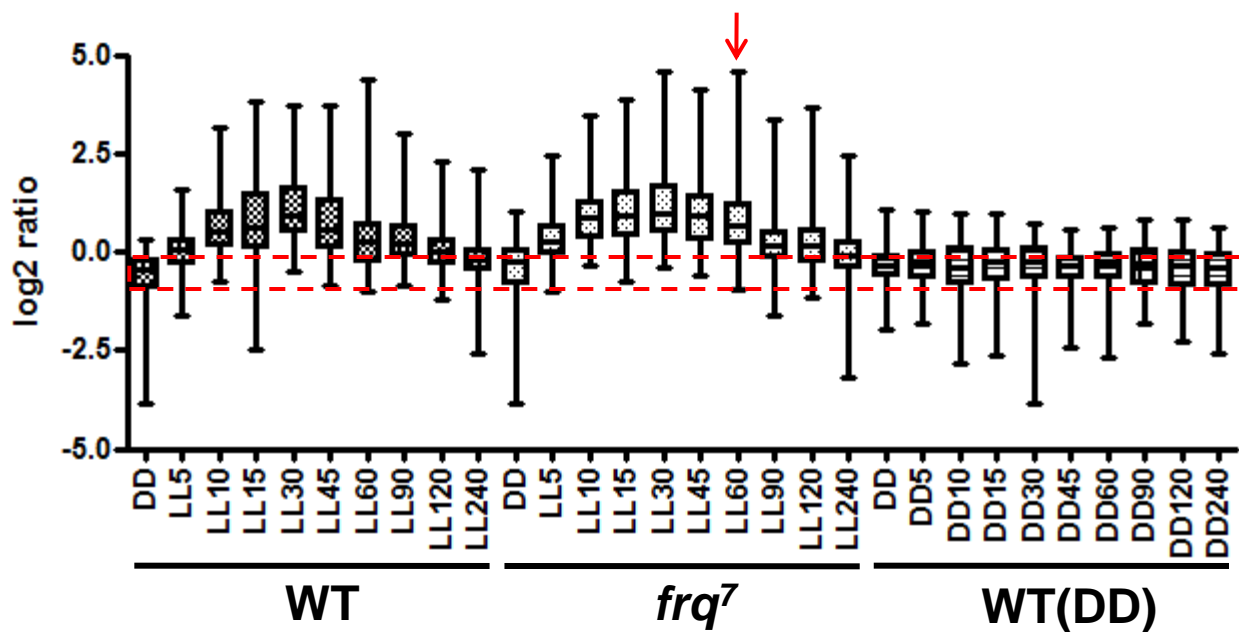
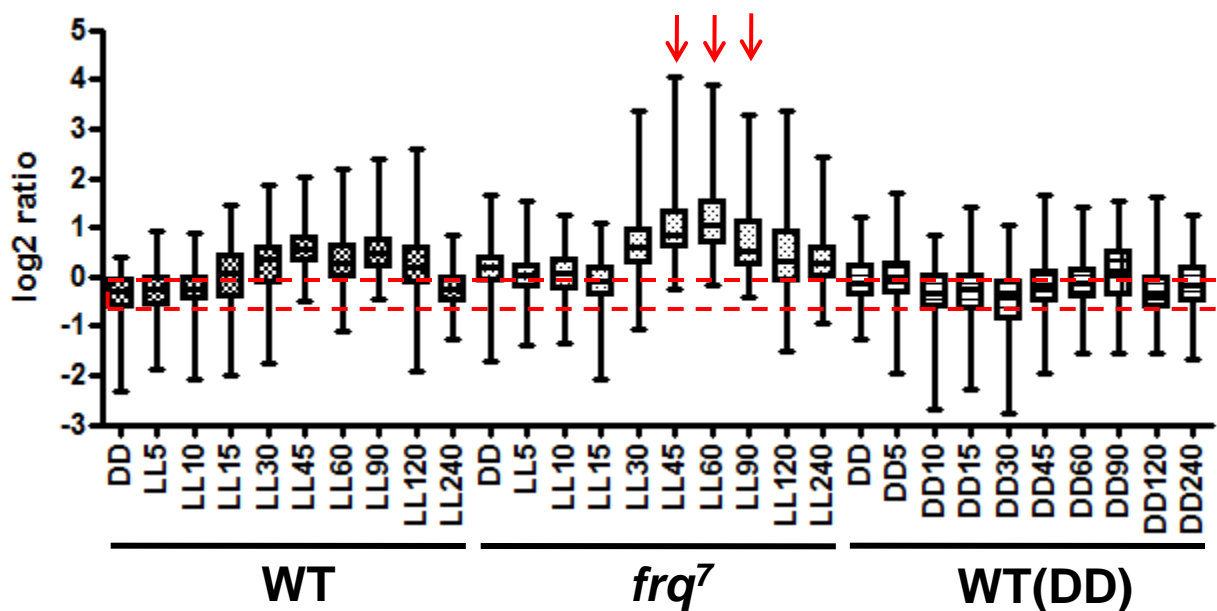


Supplementary Figure 1- Comparison of light induction between WT and *frq*<sup>7</sup>

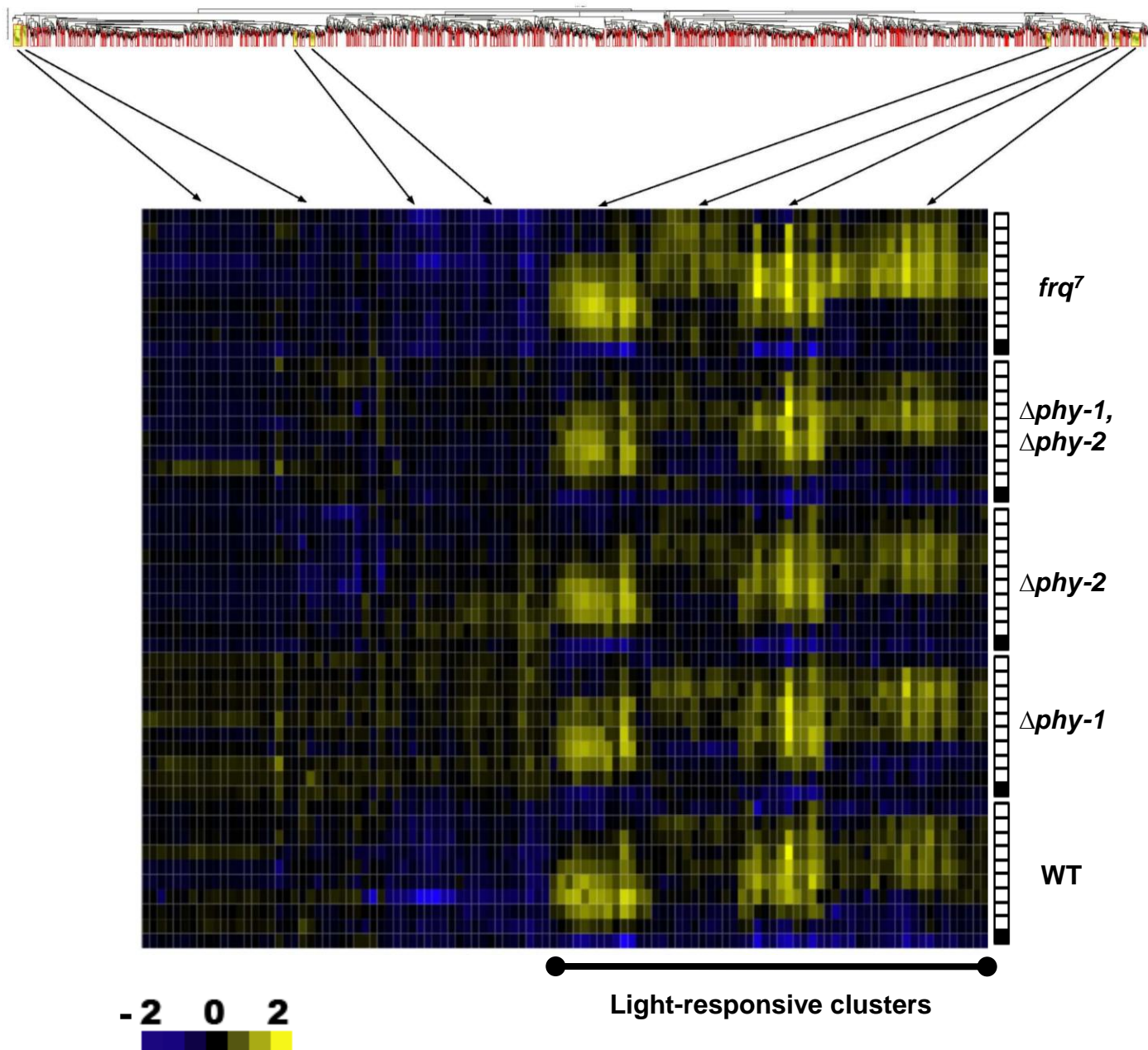
A



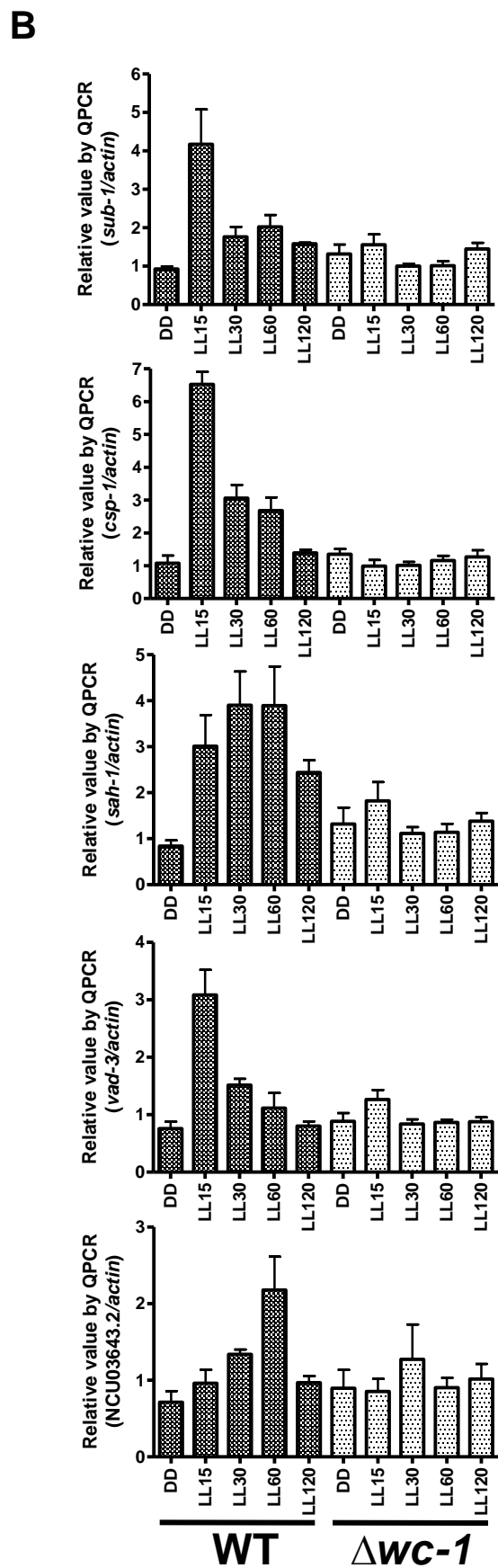
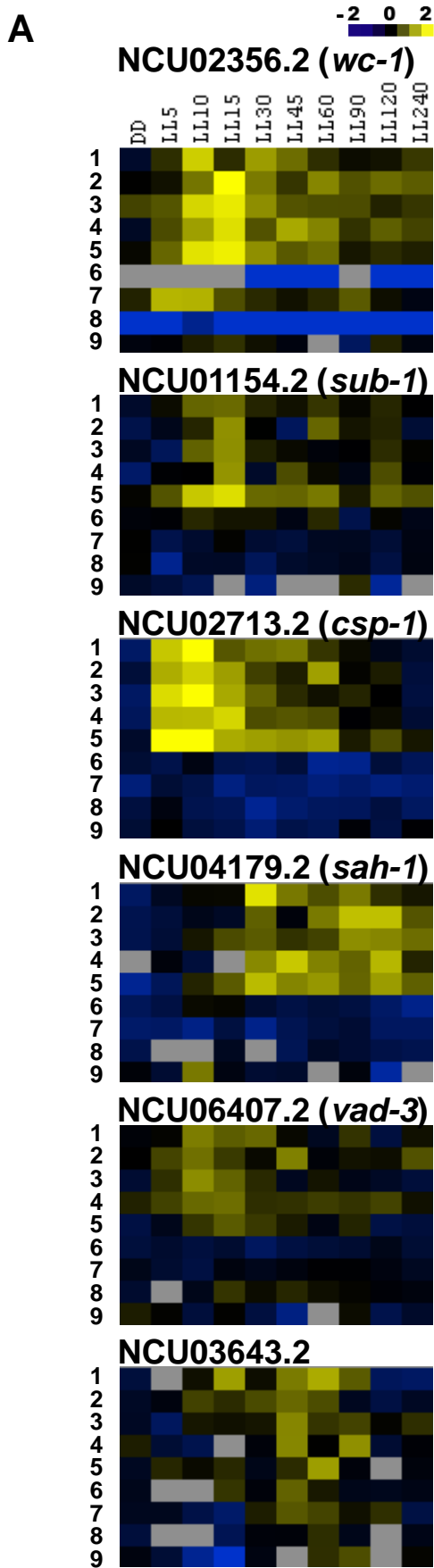
B



# Supplementary Figure 2- Statistically significant clusters identified by a bootstrapping analysis

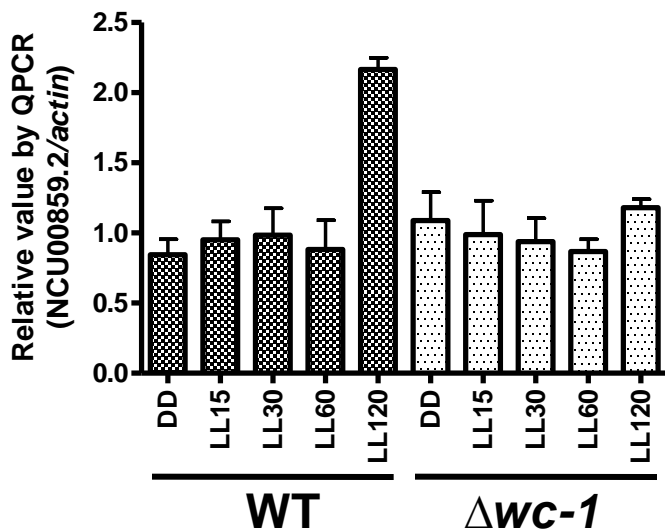


# Supplementary Figure 3- RT-QPCR validation of light-responsive genes

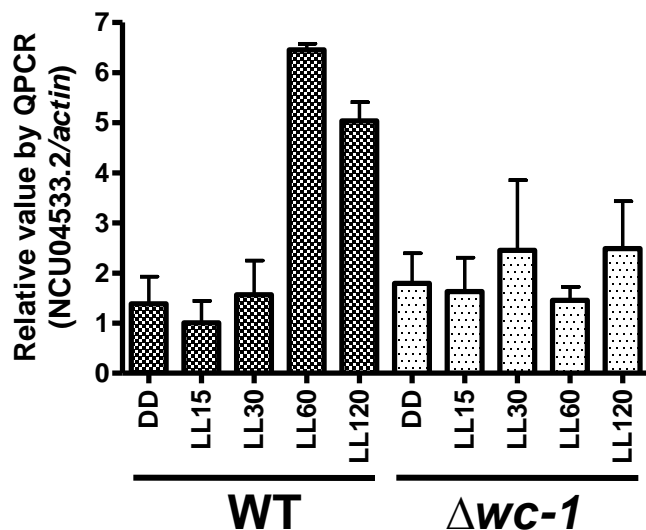


Supplementary Figure 3- RT-QPCR validation of light-responsive genes

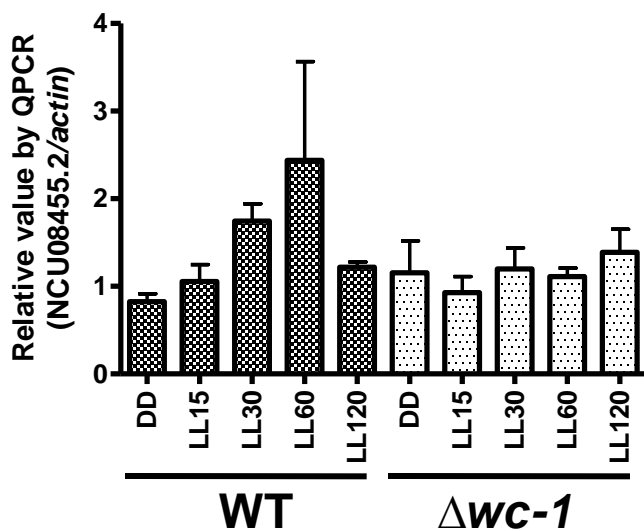
**C**



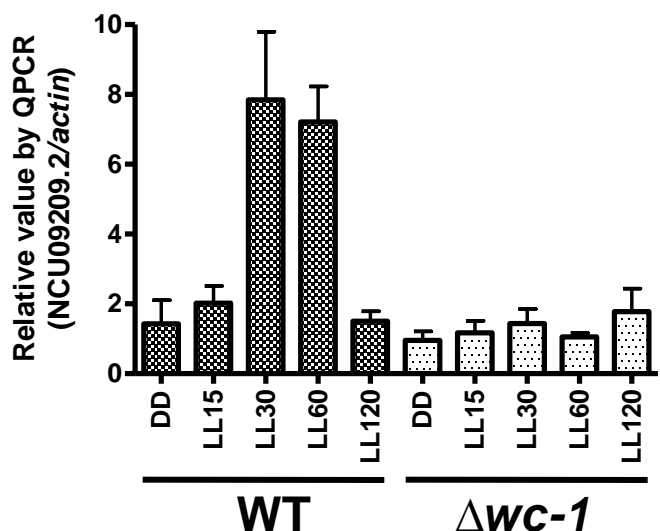
**D**



**E**



**F**



## Supplementary Figure 4- Circadian clock phenotype in the TF knockout strains

LL to DD



Period  $\pm$  S.D. (Phase on day 1)

$\Delta wc-1$



N.D.

$\Delta sub-1$



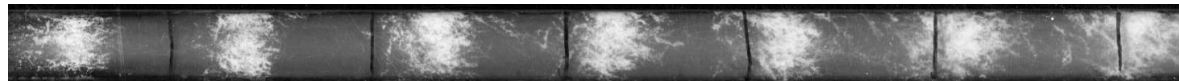
$21.0 \pm 0.19$  (9.53)

$\Delta csp-1$



$21.2 \pm 0.27$  (10.45)

$\Delta sah-1$



$21.9 \pm 0.03$  (10.71)

$\Delta vad-3$



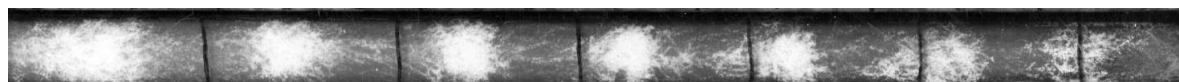
$21.6 \pm 0.51$  (9.69)

$\Delta NCU03643.2$



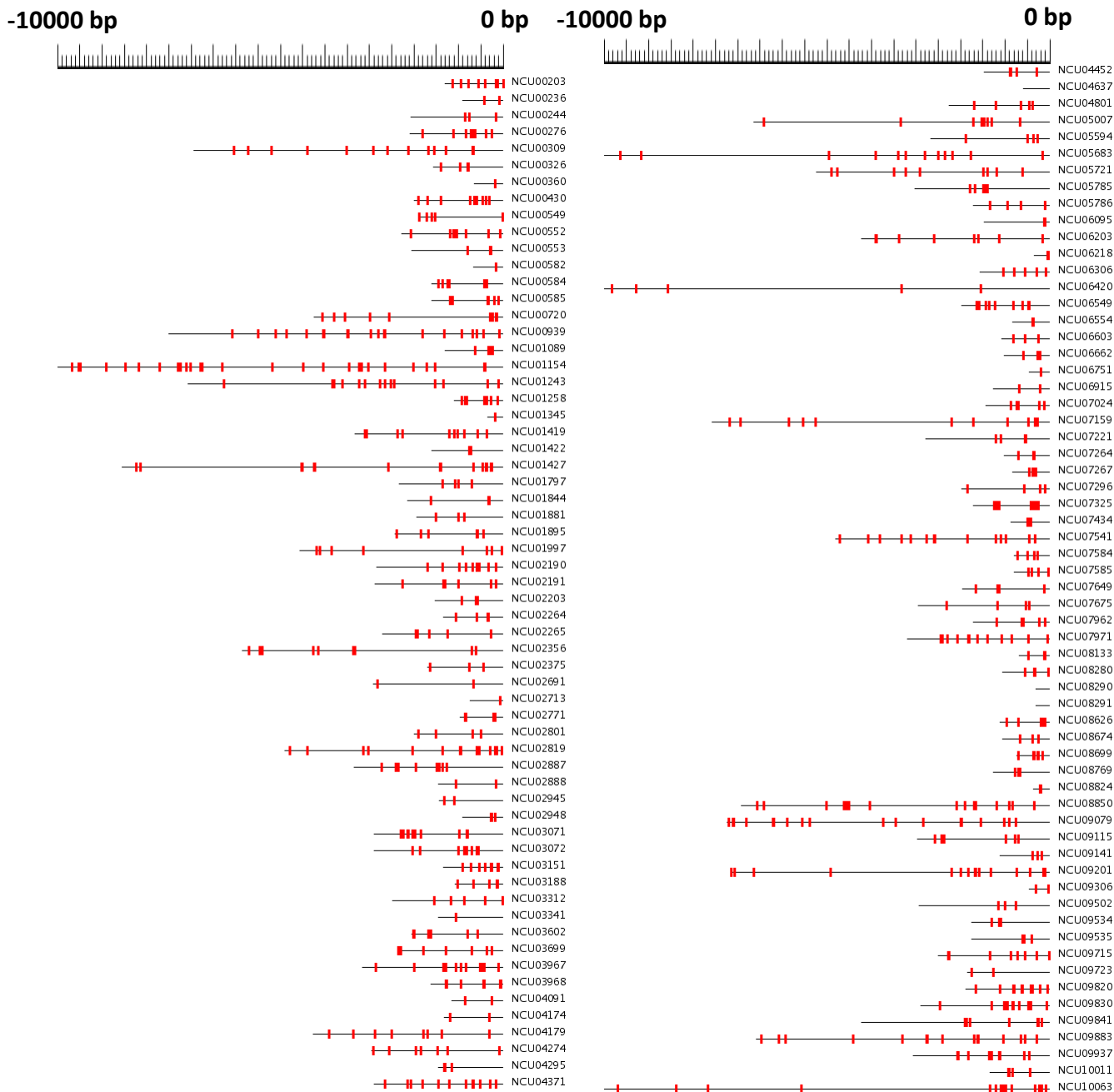
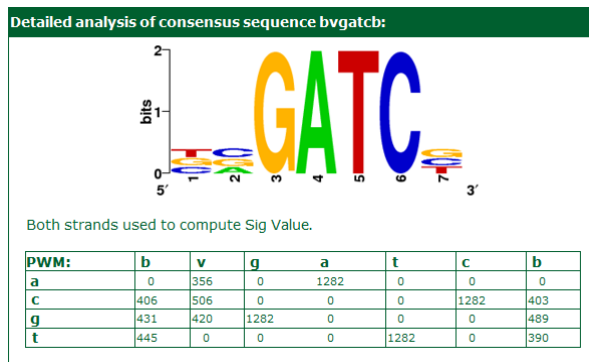
$21.2 \pm 0.48$  (10.84)

$ras-1^{bd}$

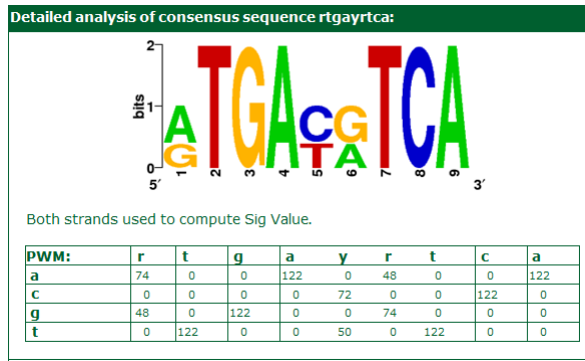


$22 \pm 0.2$  (11.42)

# Supplementary Figure 5A- Distribution of the ELRE



# Supplementary Figure 5B- Distribution of the LLRE

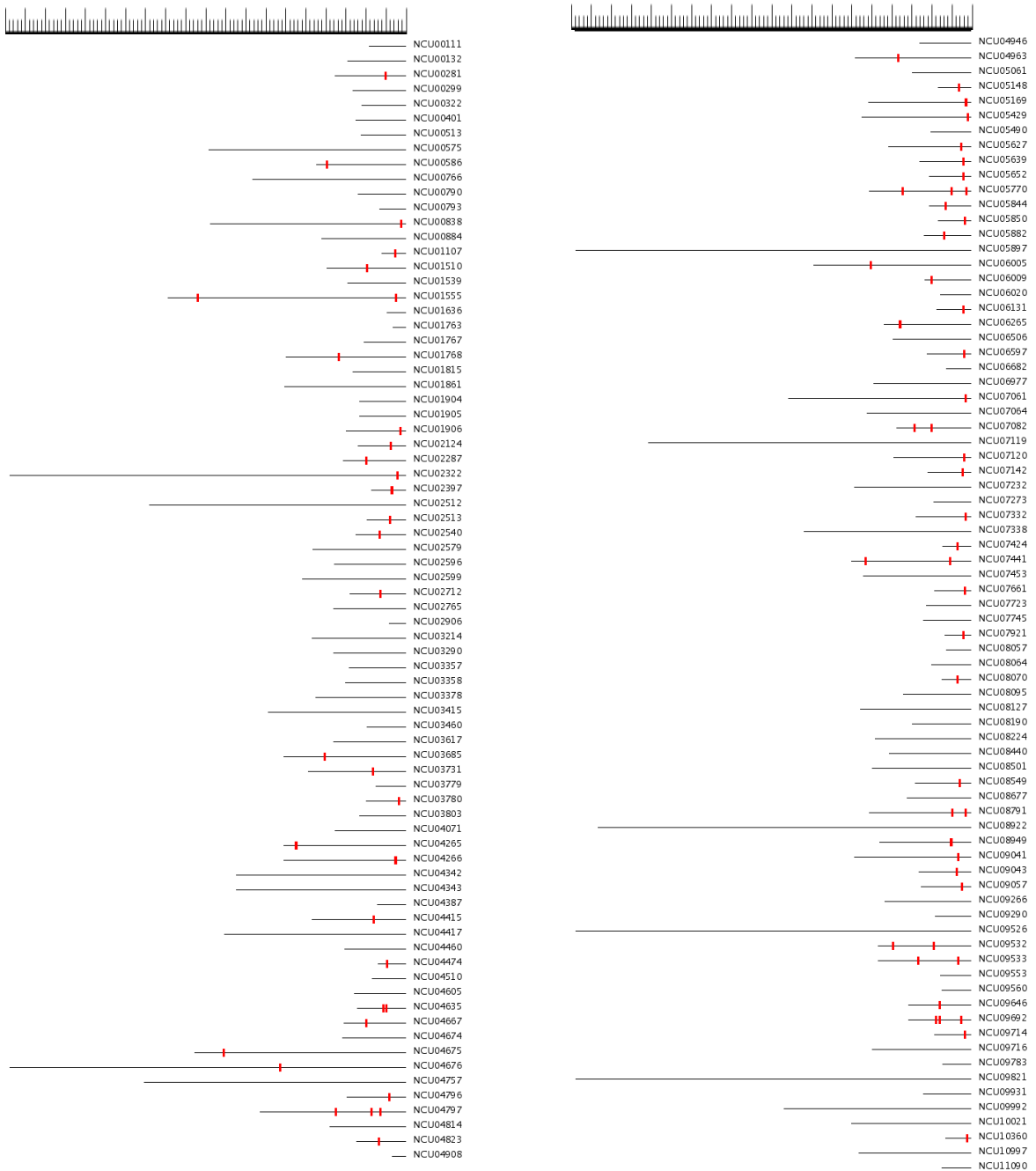


-10000 bp

0 bp

-10000 bp

0 bp



## Supplementary Figure 6- SAM analysis of late light responses in knockout strains

