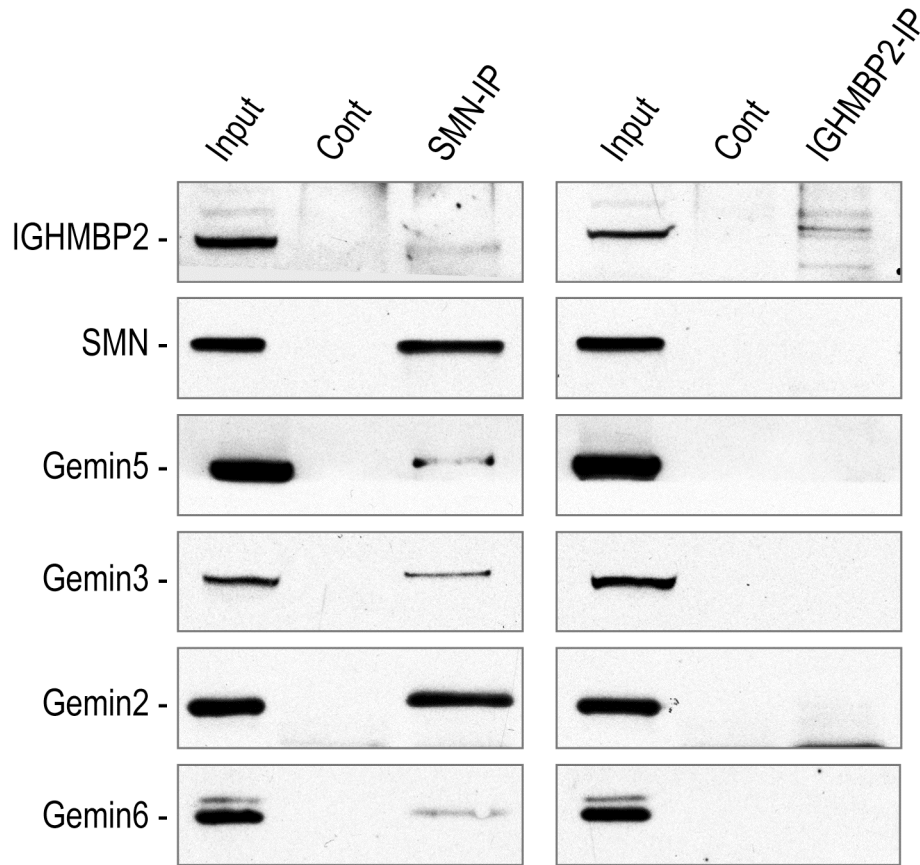
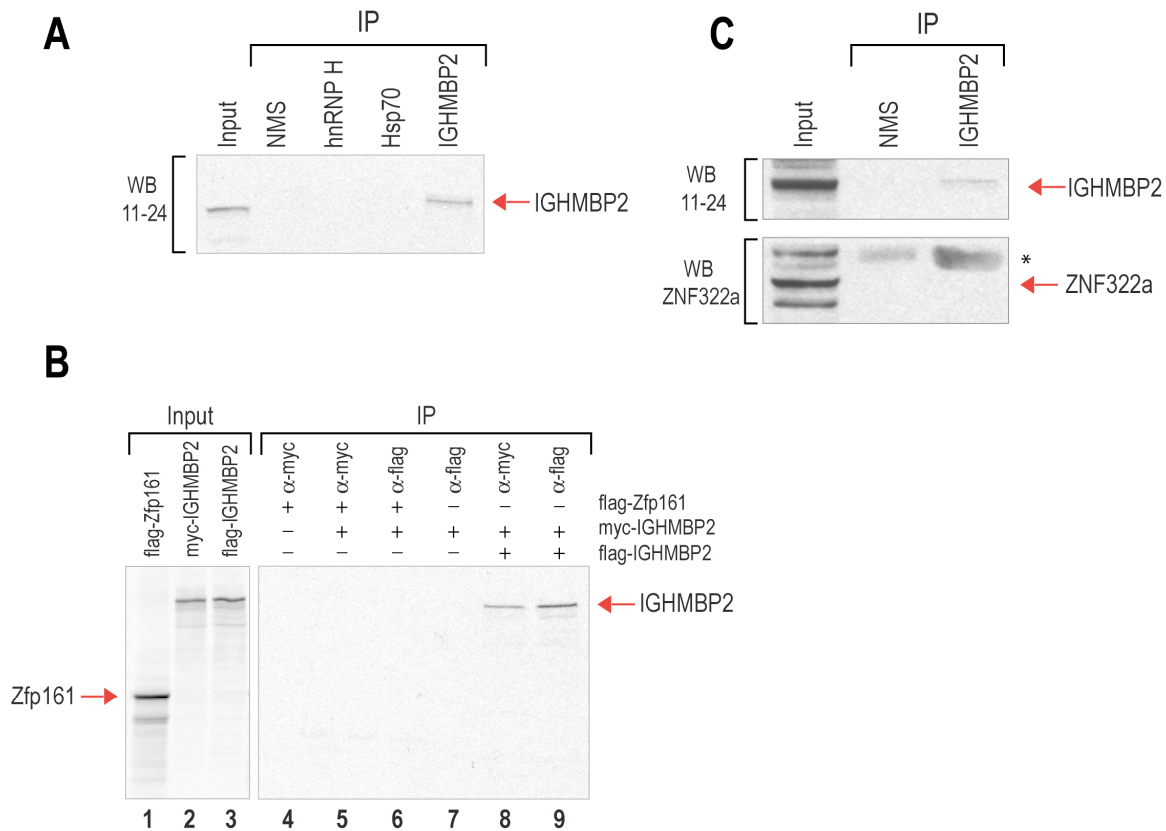


SUPPLEMENTAL DATA



Supplementary Figure 1. IGHMBP2 is not a component of the SMN complex

Immunoprecipitations (IPs) were performed with anti-FLAG (M2) from 293T cells expressing FLAG-IGHMBP2 or from FLAG control 293T cells or with anti-SMN antibody (2B1) from the same cells. Immunoprecipitates from the anti-FLAG beads were resolved on 4-12% NuPAGE gel and probed on Western blot with anti-FLAG (M2; to detect FLAG-IGHMBP2), anti-Gemin3 (12H12), anti-Gemin5 (10G11), anti-SMN (2B1), anti-Gemin2 (3F8, Santa Cruz) and rabbit anti-Gemin6 antibodies.



Supplementary Figure 2. IGHMBP2 does not interact with hnRNP H, Hsp70, Zfp161 or ZNF322a

A. Immunoprecipitations were performed from 293T cells with NMS (as negative control), anti-hnRNP H, anti-Hsp70 and anti-IGHMBP2. Immunoprecipitates were resolved on 4-12% NuPAGE gel and probed on Western blot with anti-IGHMBP2 (11-24).

B. Flag-Zfp161, flag- and myc-IGHMBP2 proteins were radiolabeled by *in vitro* translation (lanes 1-3) and were pre-incubated to allow reciprocal binding. Immunoprecipitations were performed using anti-Flag (lanes 6,7 and 9) or anti-myc (lanes 4,5 and 8) antibodies.

C. Immunoprecipitations were performed from 293T cells with NMS (as negative control) and anti-IGHMBP2 (11-24). Immunoprecipitates were resolved on 4-12% NuPAGE gel and probed on Western blot with anti-IGHMBP2 (11-24, upper panel) and anti-ZNF322a (lower panel); asterisk (*) indicate IgG light chains.