

Ratelade et al., 2009
Figure S1

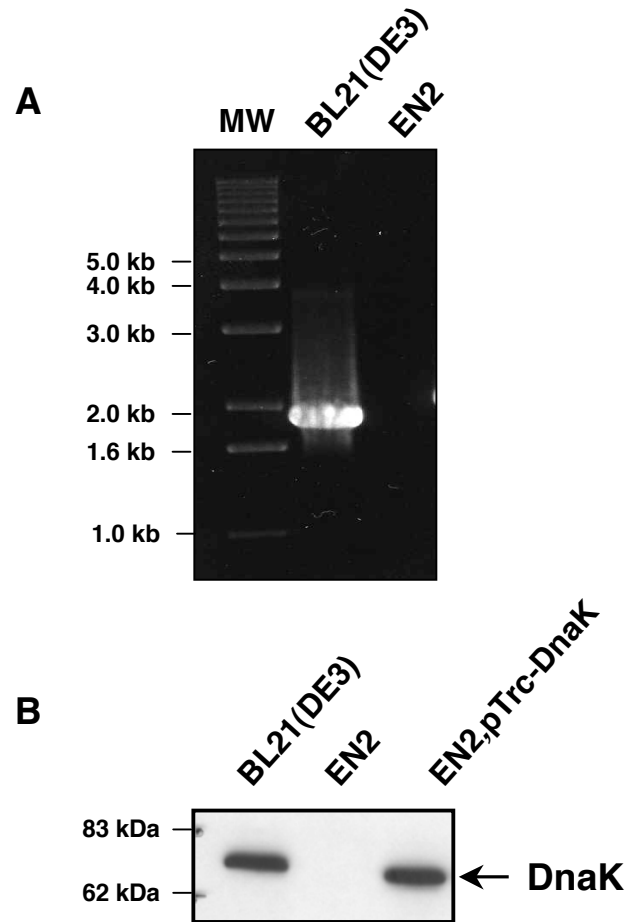


Figure S1. EN2 cells are *dnaK*-deleted and do not produce DnaK.

(A) Amplification of *dnaK* in BL21(DE3) and EN2 cells. PCR was conducted on BL21(DE3) (lane 1) or EN2 (lane 2) colonies using the GoTaq DNA polymerase (Promega) according to the manufacturer's recommendation. Size of molecular mass markers in kilobases are indicated on the left of the gel.

(B) DnaK amount in BL21(DE3) and EN2 cells. 10 μ g of total extracts of BL21(DE3) cells (lane 1), EN2 cells (lane 2), or EN2 cells containing a *dnaK* expressing plasmid (lane 3) were analyzed by electrophoresis and DnaK production was measured by immunoblot using an anti-DnaK antibody. Size of molecular mass markers in kilodaltons are indicated on the left of the gel.