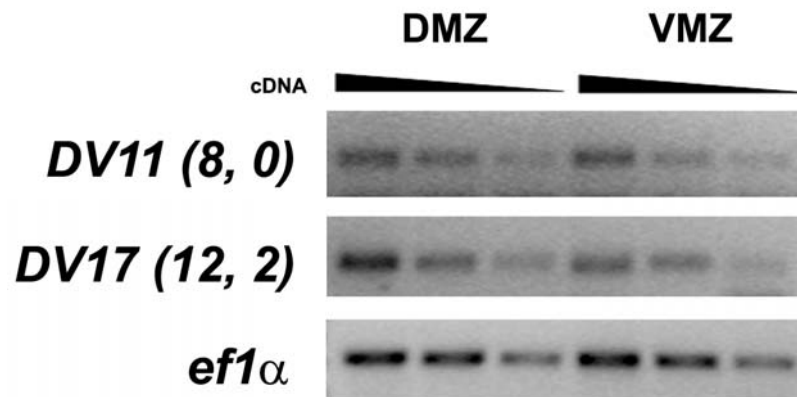


Faunes et al, Supplementary Figure S1



Supplementary Figure S1. Total RNA was obtained from dorsal (DMZ) and ventral (VMZ) explants isolated from *X. tropicalis* gastrula stage. Semi-quantitative RT-PCR was performed using specific primers for each transcript. The correct separation of explants was checked using primers for *chordin* and *sizzled* (Figure 3 and data not shown).