

Supplemental Data File 3:

Genes Regulated by Caloric Restriction Have Unique Roles within Transcriptional Networks

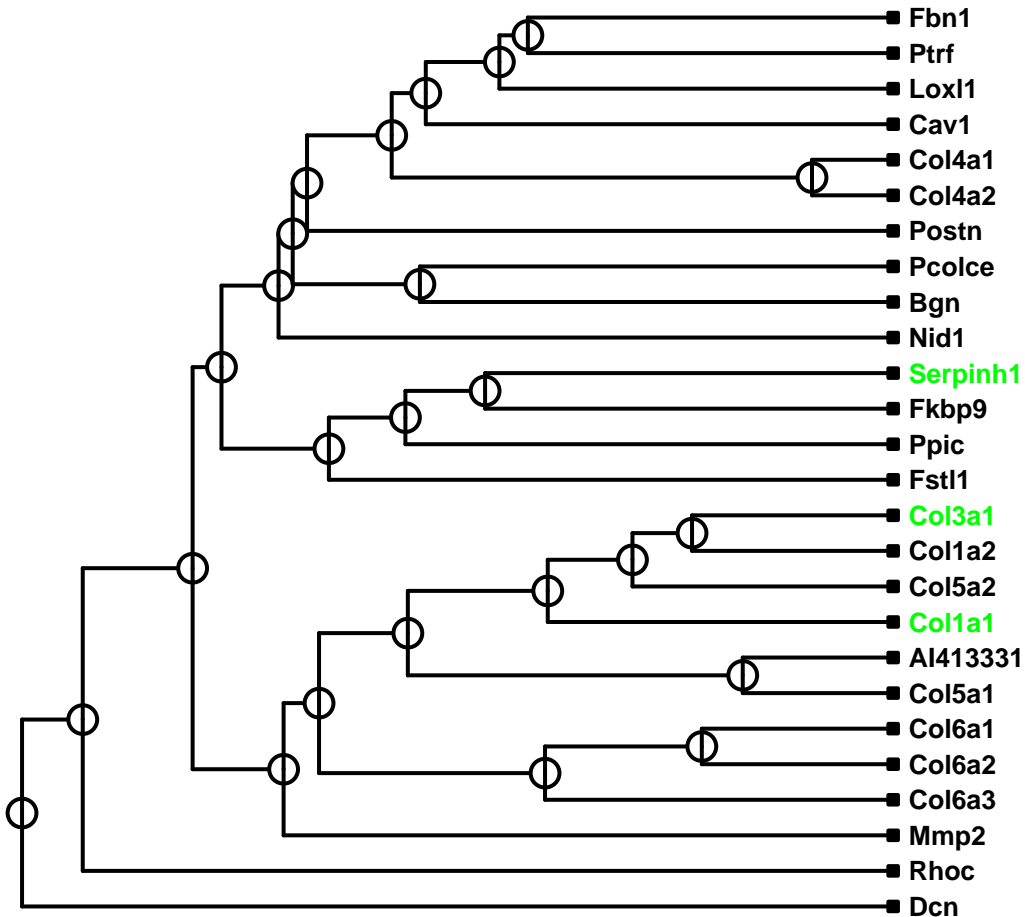
William R. Swindell

University of Michigan, Departments of Pathology and Geriatrics

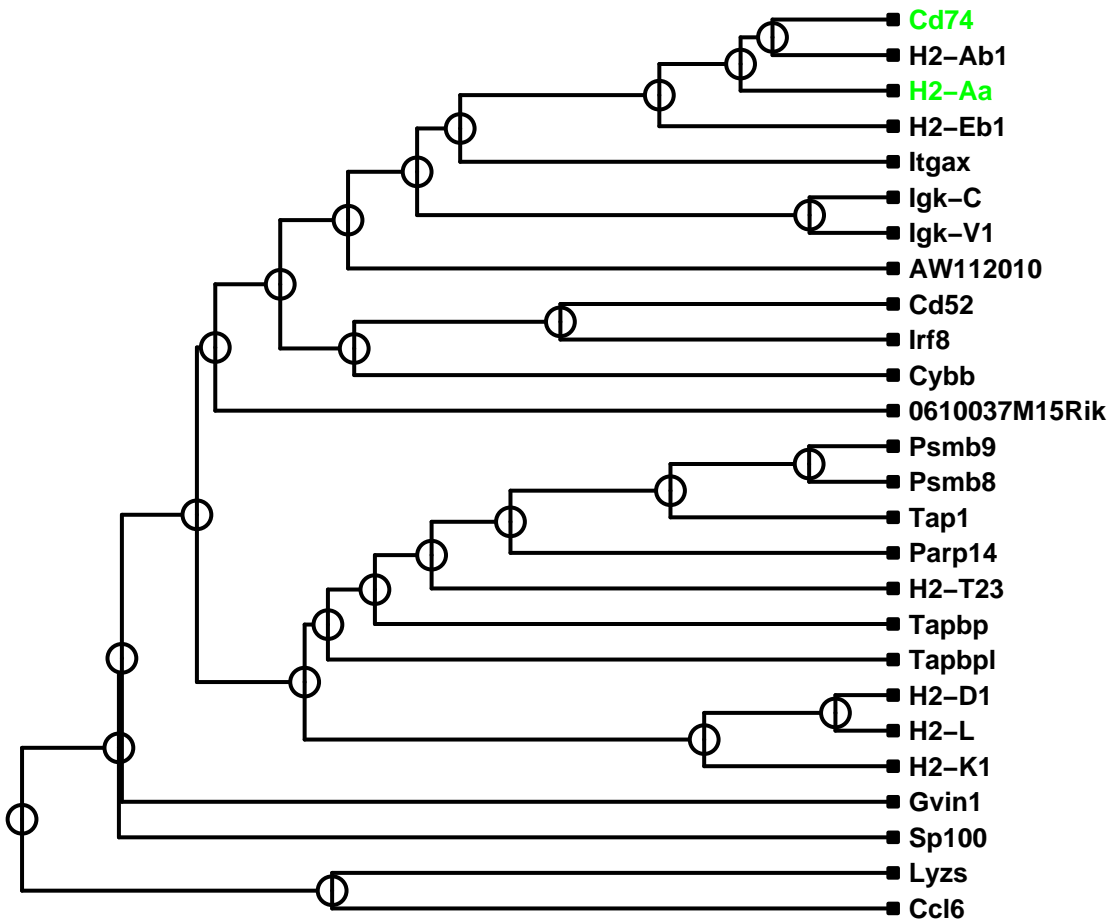
This file displays dendrograms based on each CR-regulated gene and its nearest-neighbors in the genome-wide transcriptional network. For each gene, the 25 most similar genes throughout the genome were identified based upon expression patterns from four independent datasets (Tissue, Developmental, Treatment and Mutation Series). Similarity between genes was determined by averaging absolute correlation coefficients across the four datasets. Each CR-regulated gene was then clustered along with its neighbors to obtain the dendrograms shown in this file. In each image, the CR-regulated gene upon which the dendrogram is based is shown in the upper-left corner. Throughout all images, CR-upregulated genes have red labels, while CR-downregulated genes have green labels.

Contact: William R. Swindell, wswindel@umich.edu

Col3a1

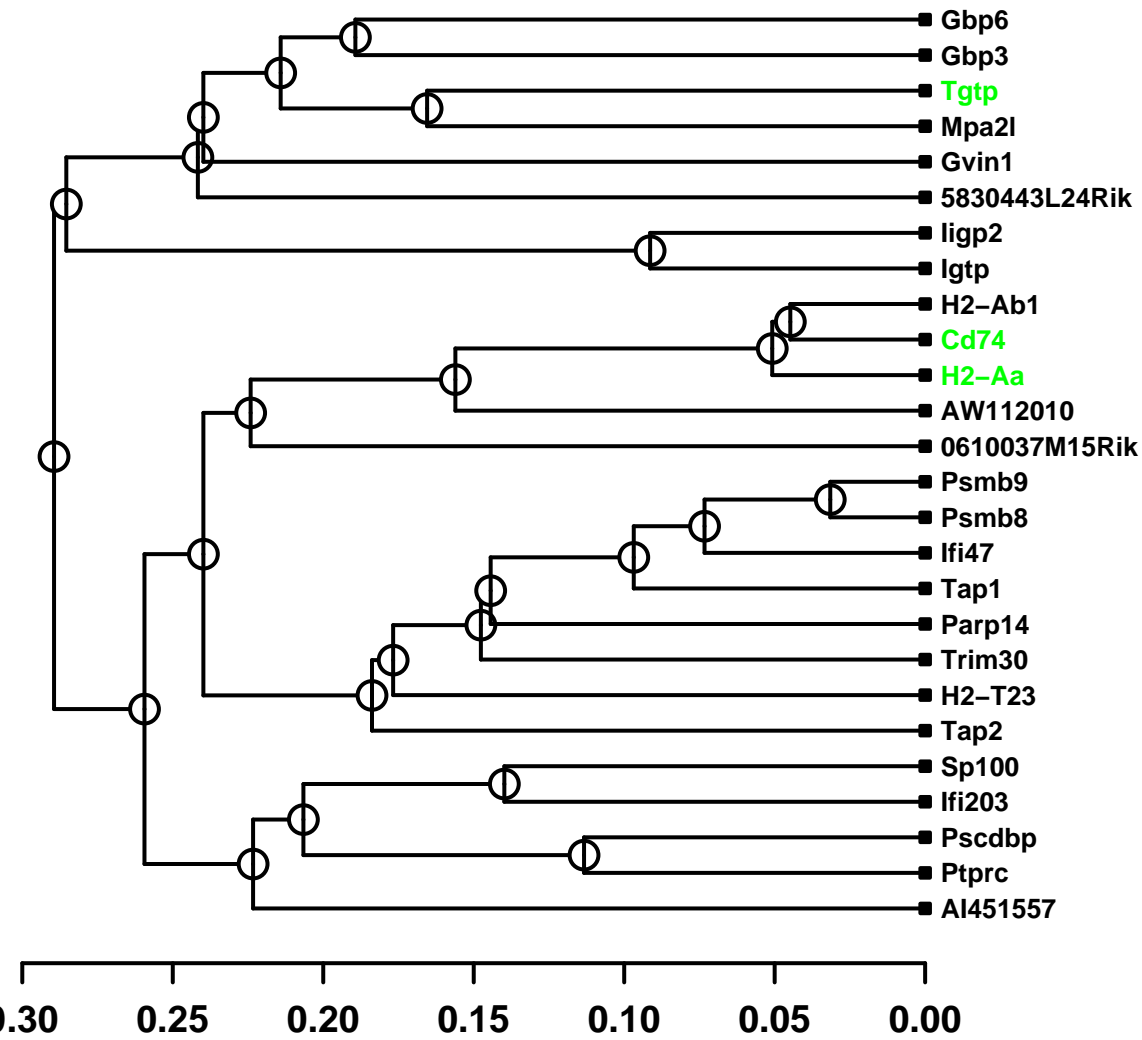


Cd74

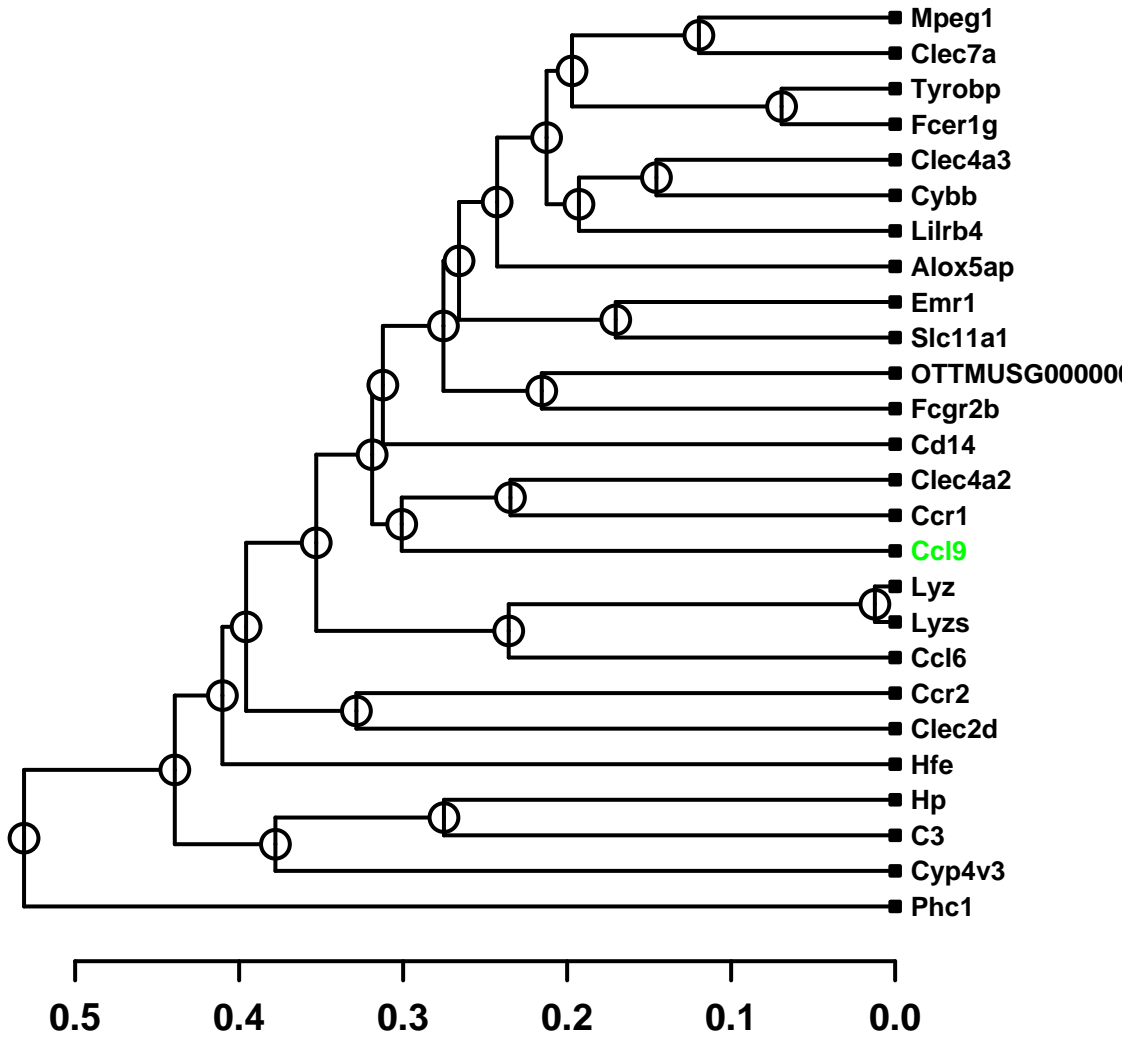


0.30 0.25 0.20 0.15 0.10 0.05 0.00

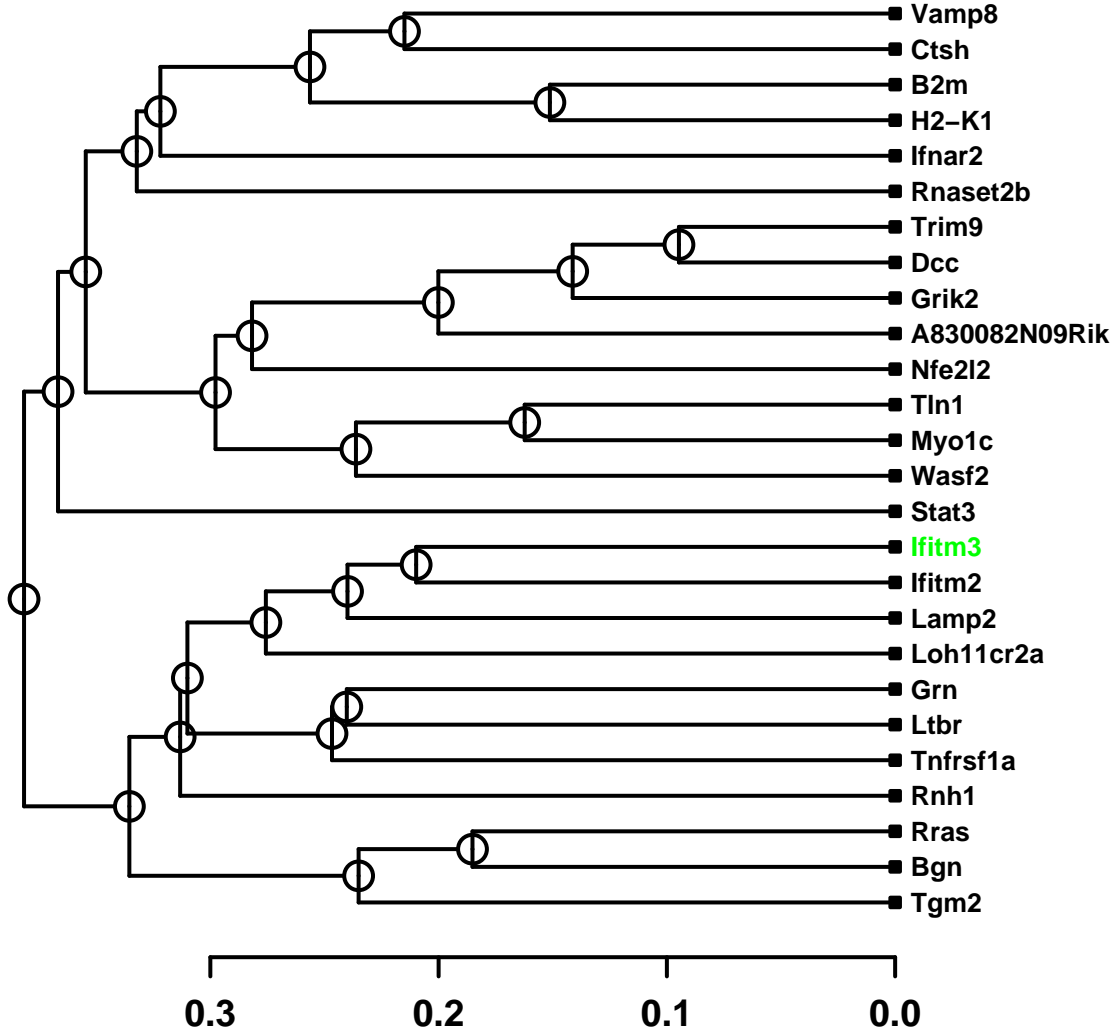
Tgtp



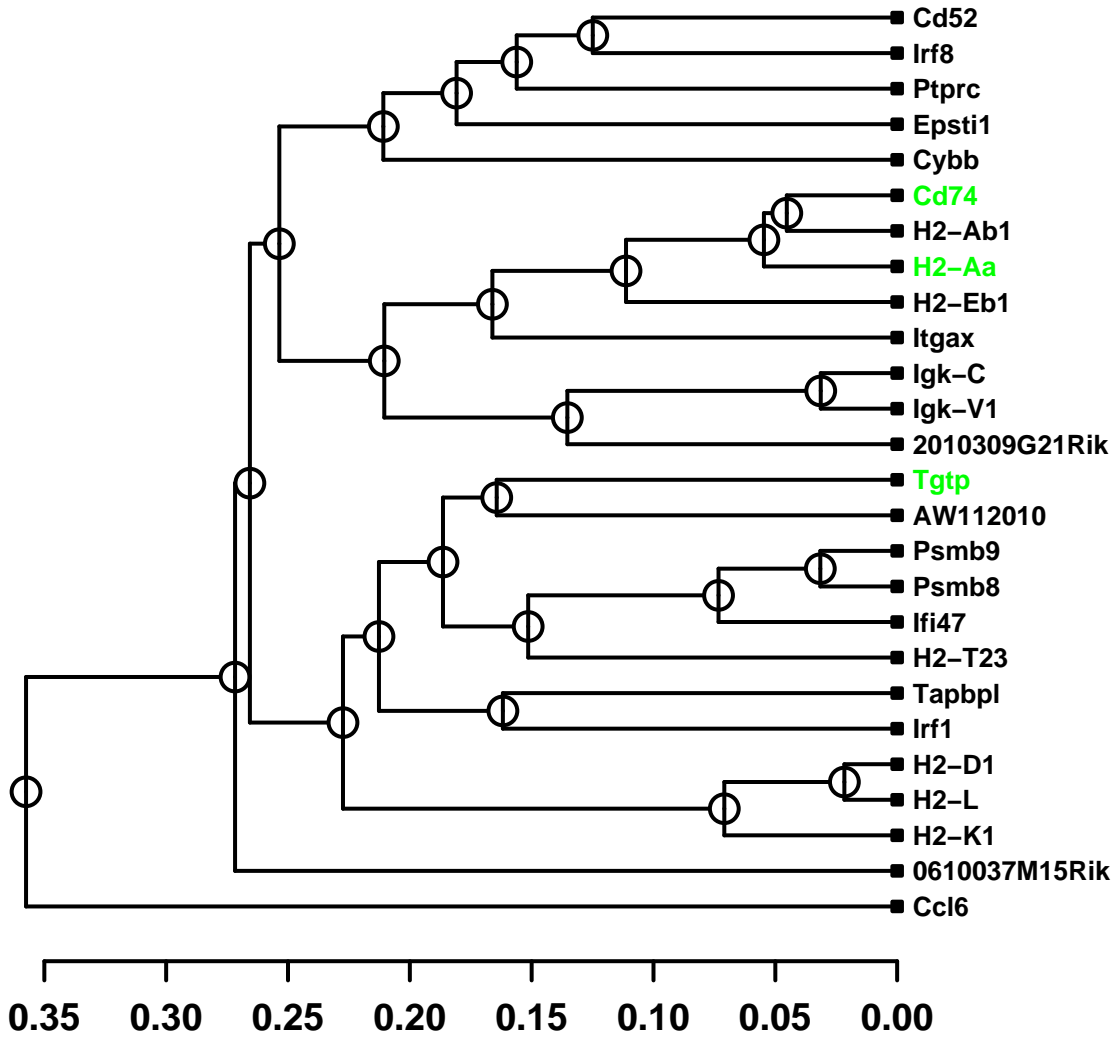
Ccl9



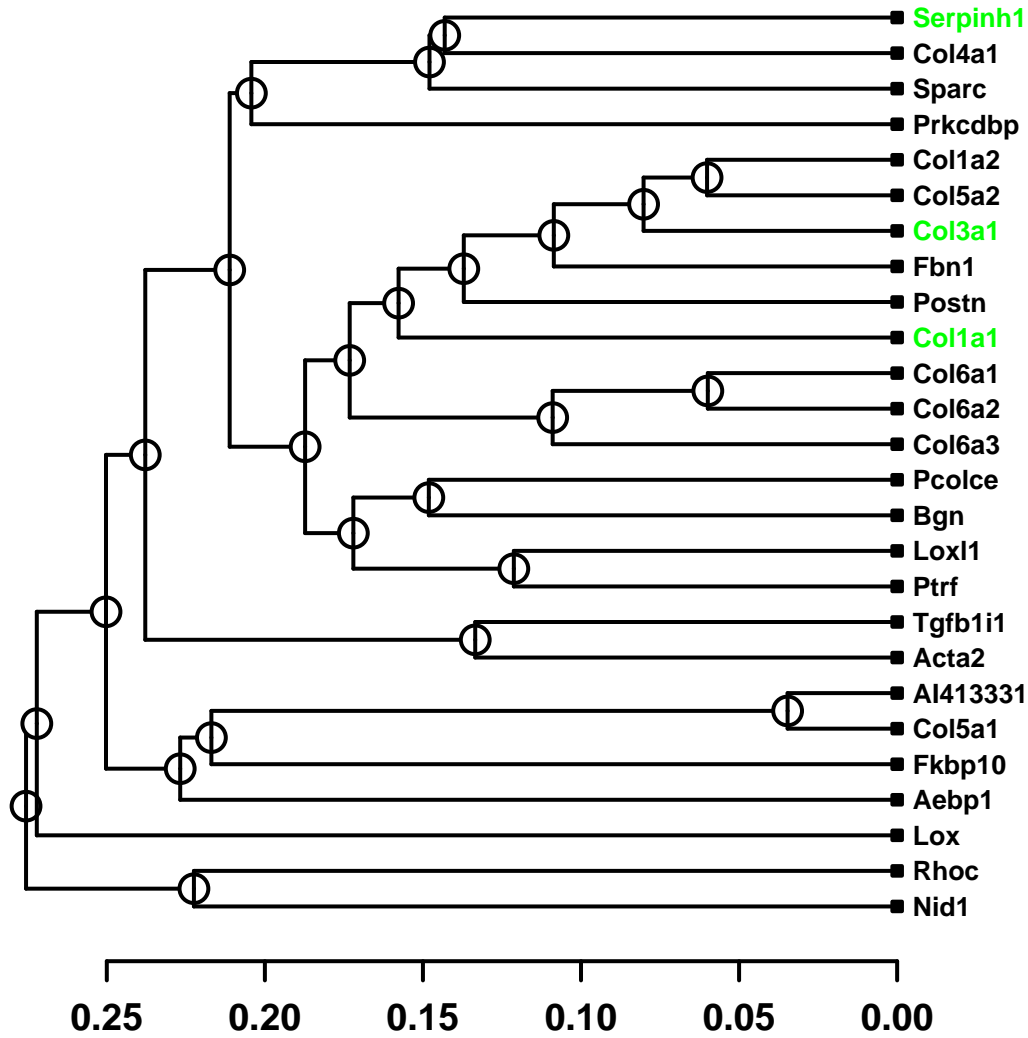
lfitm3



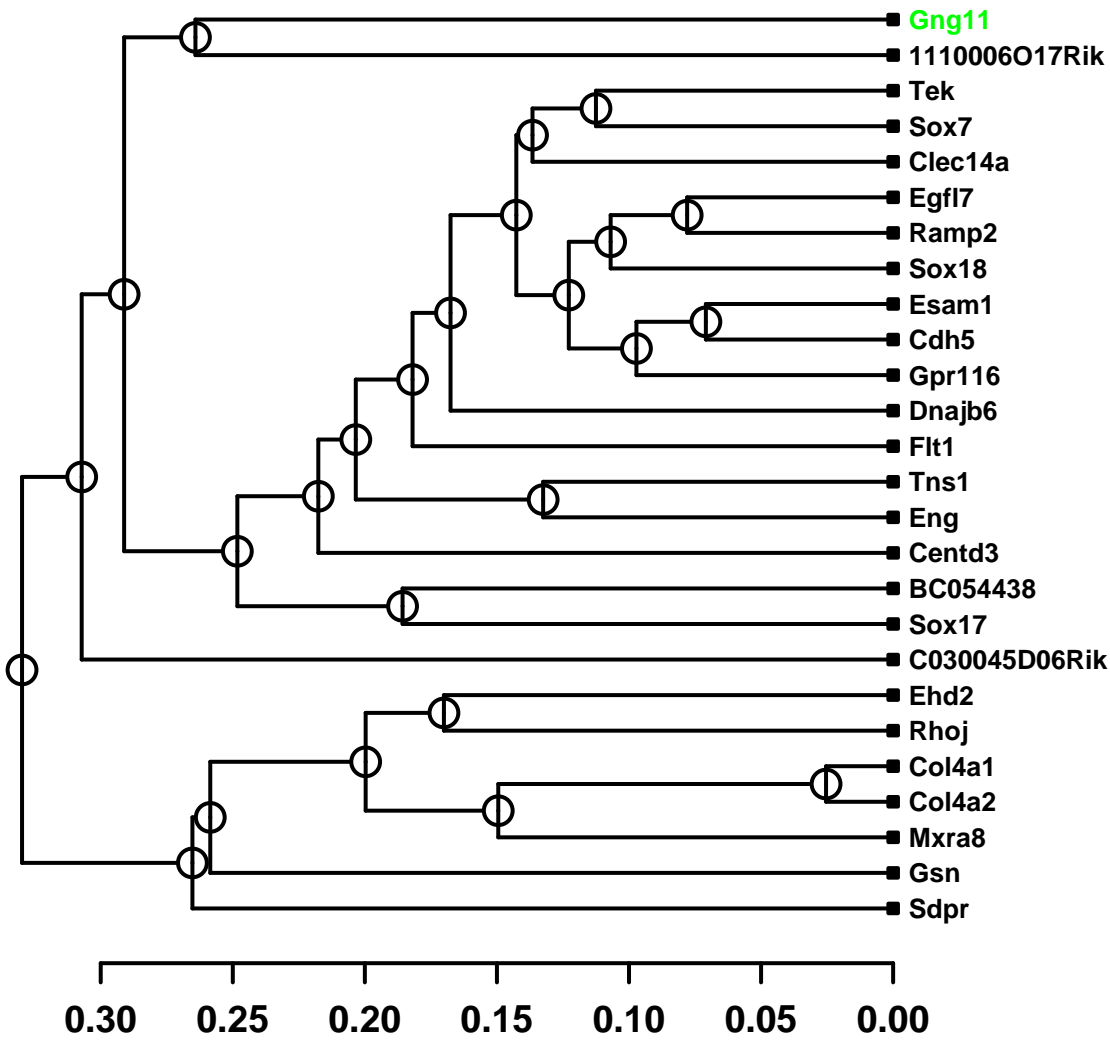
H2-Aa



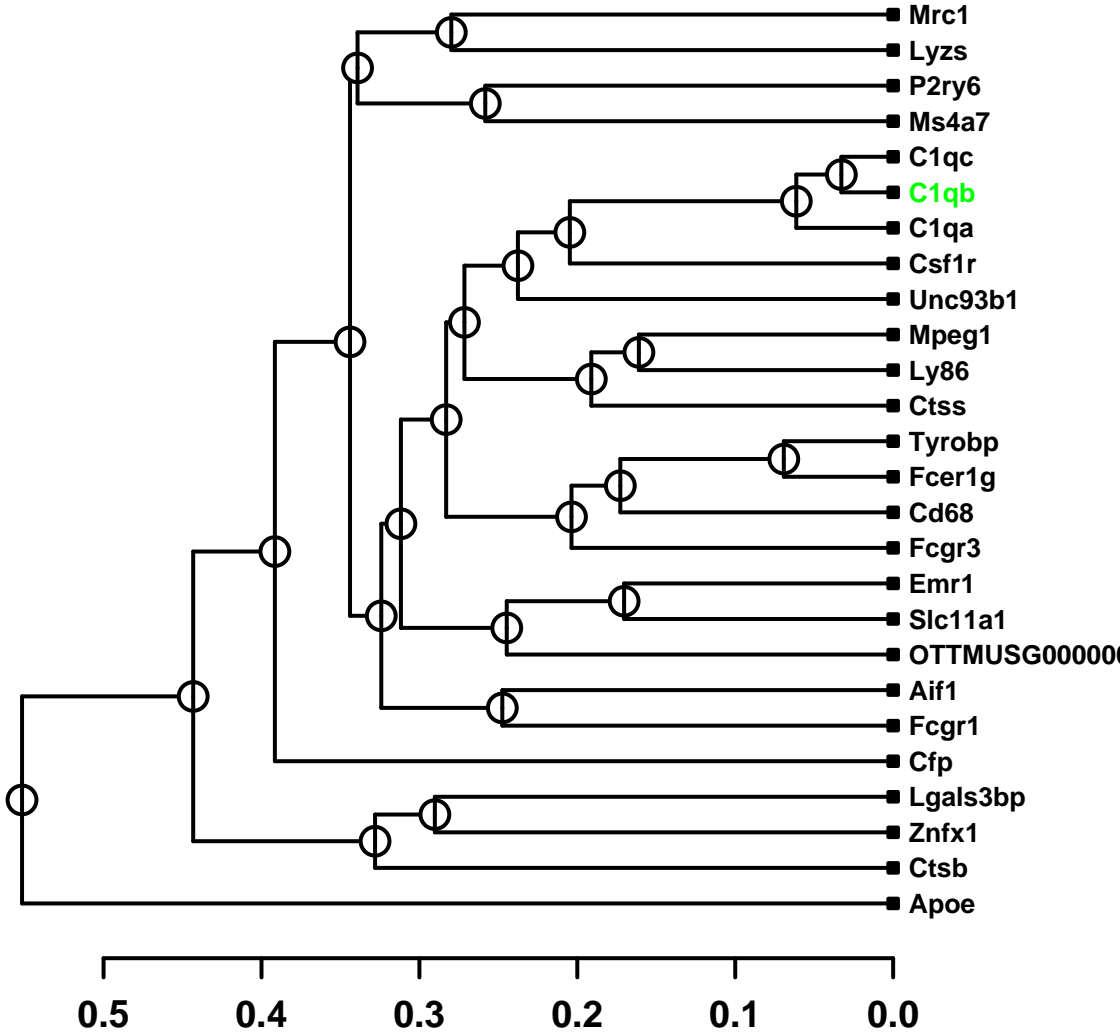
Col1a1



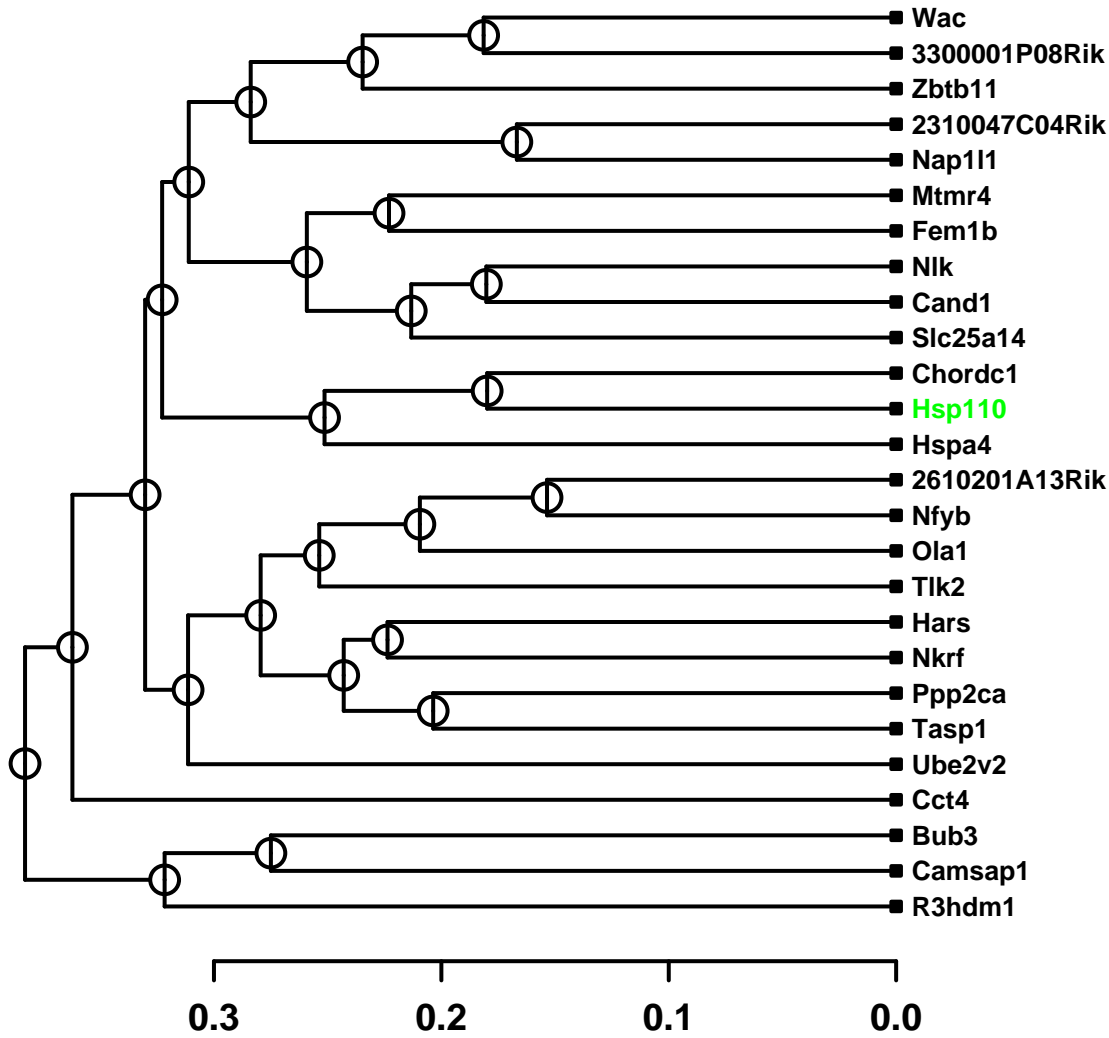
Gng11



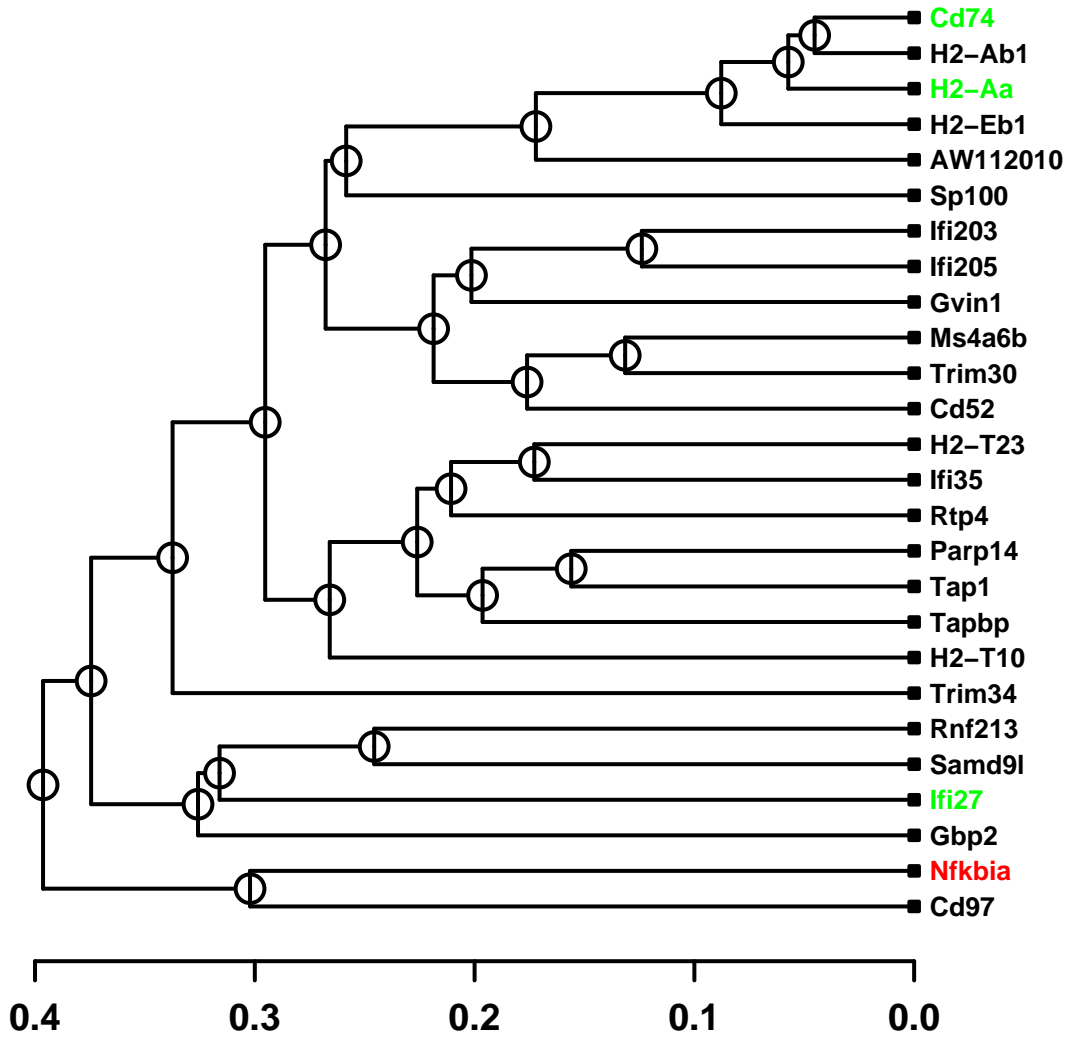
C1qb



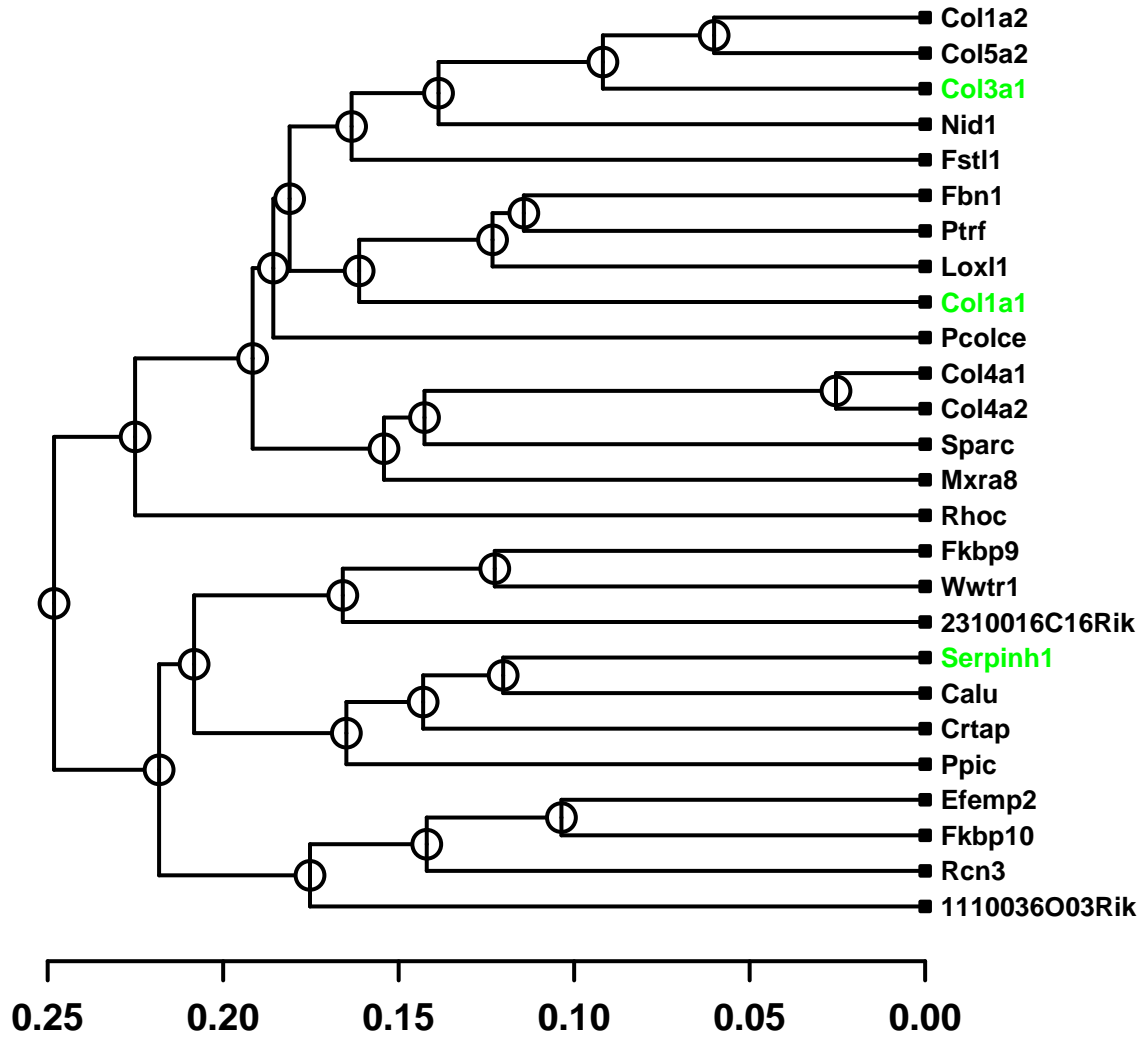
Hsp110



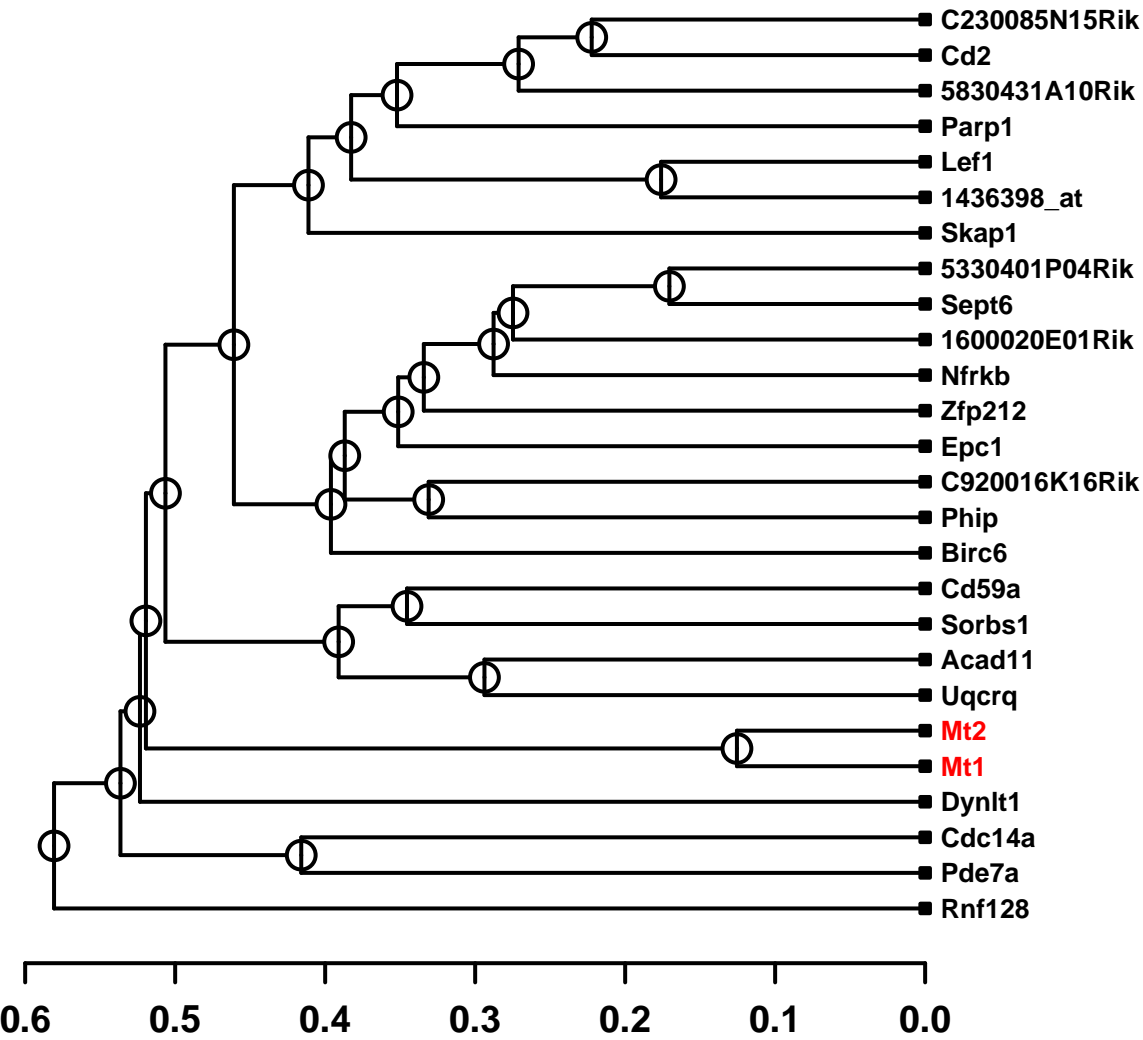
lfi27



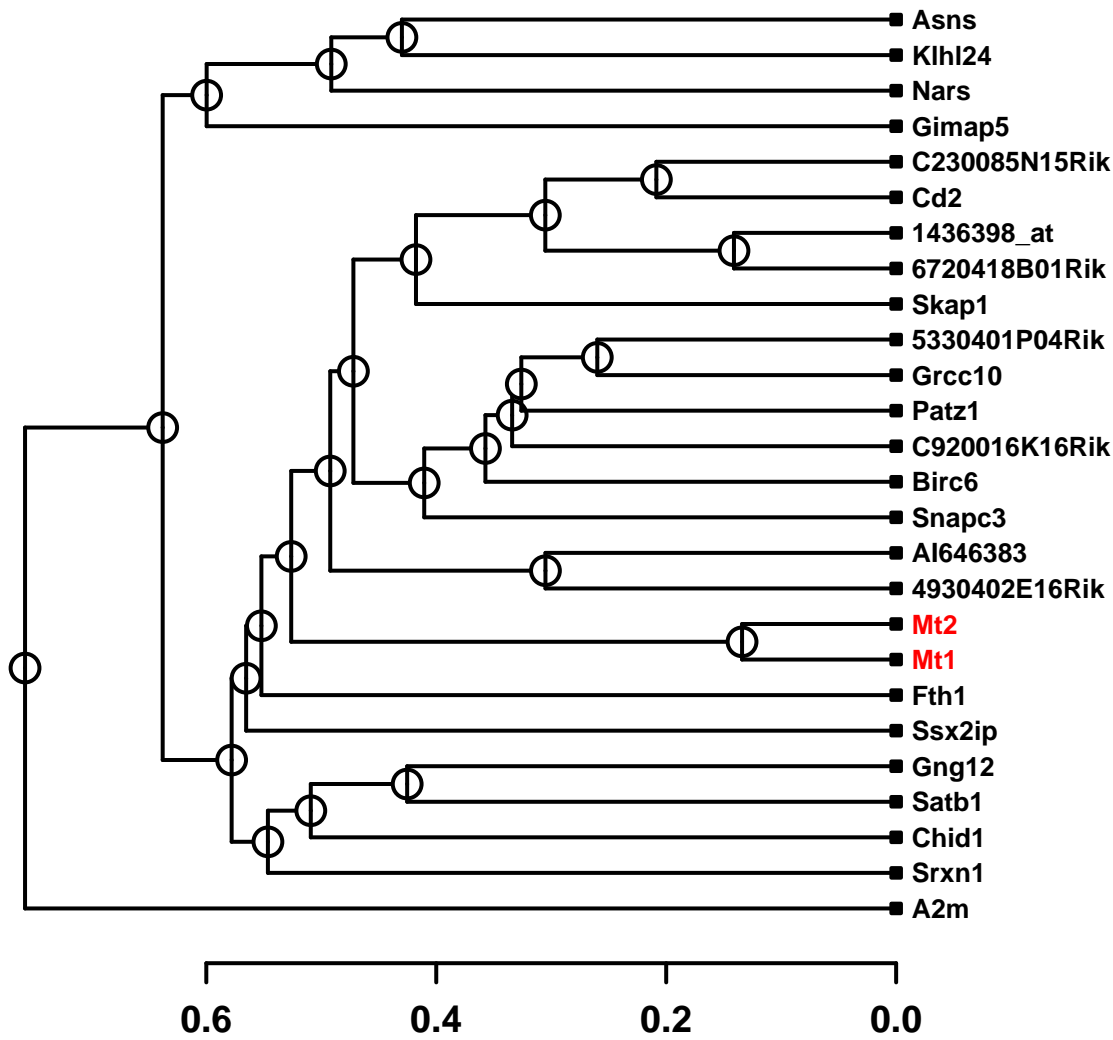
Serpinh1



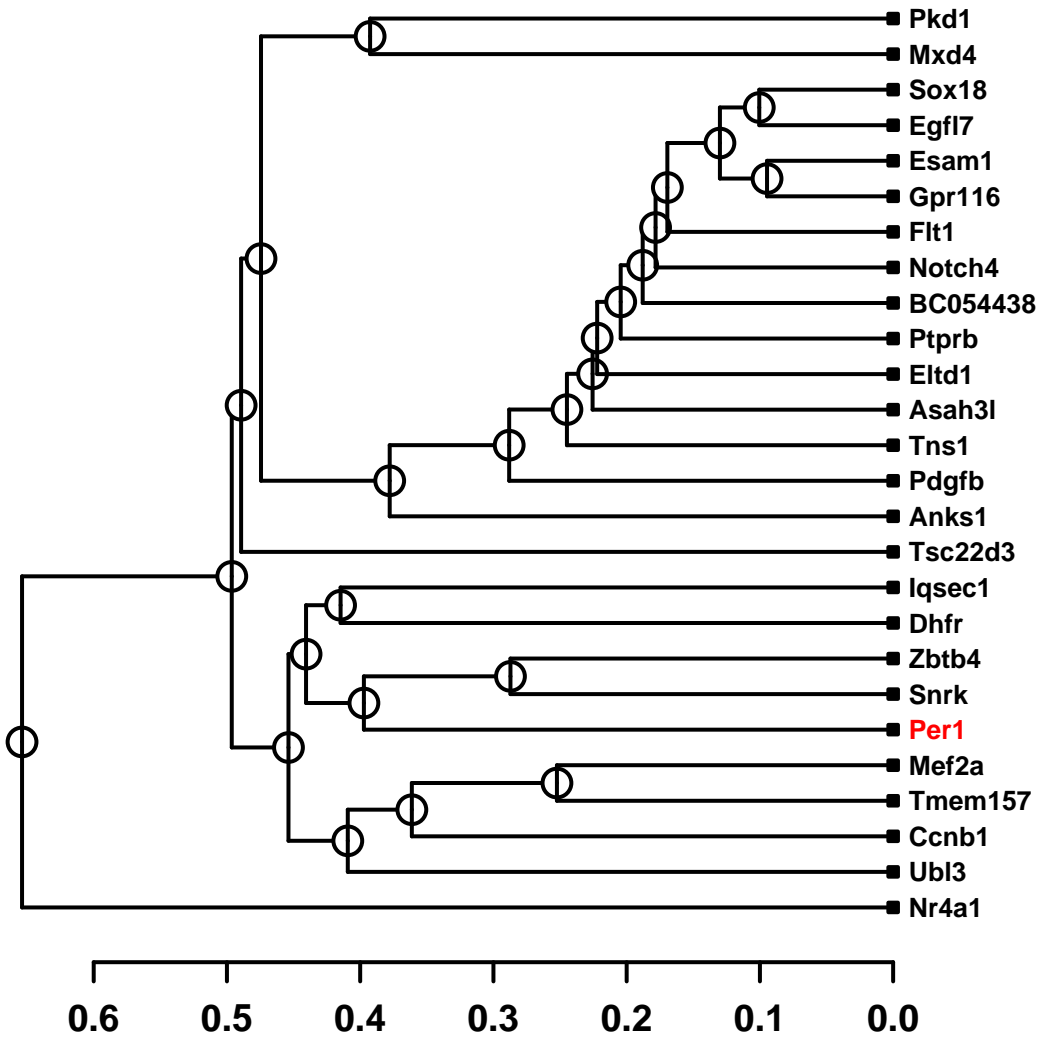
Mt1



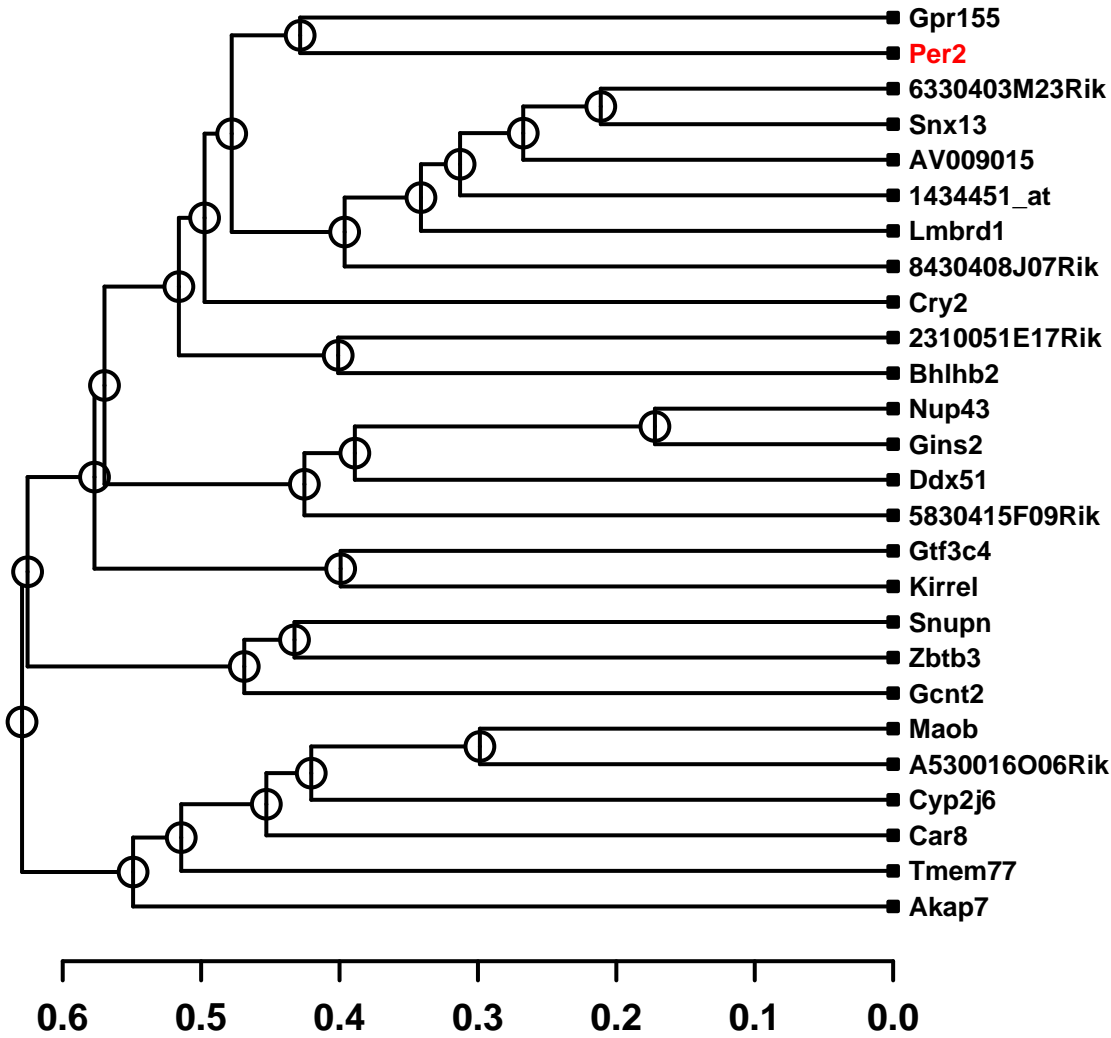
Mt2



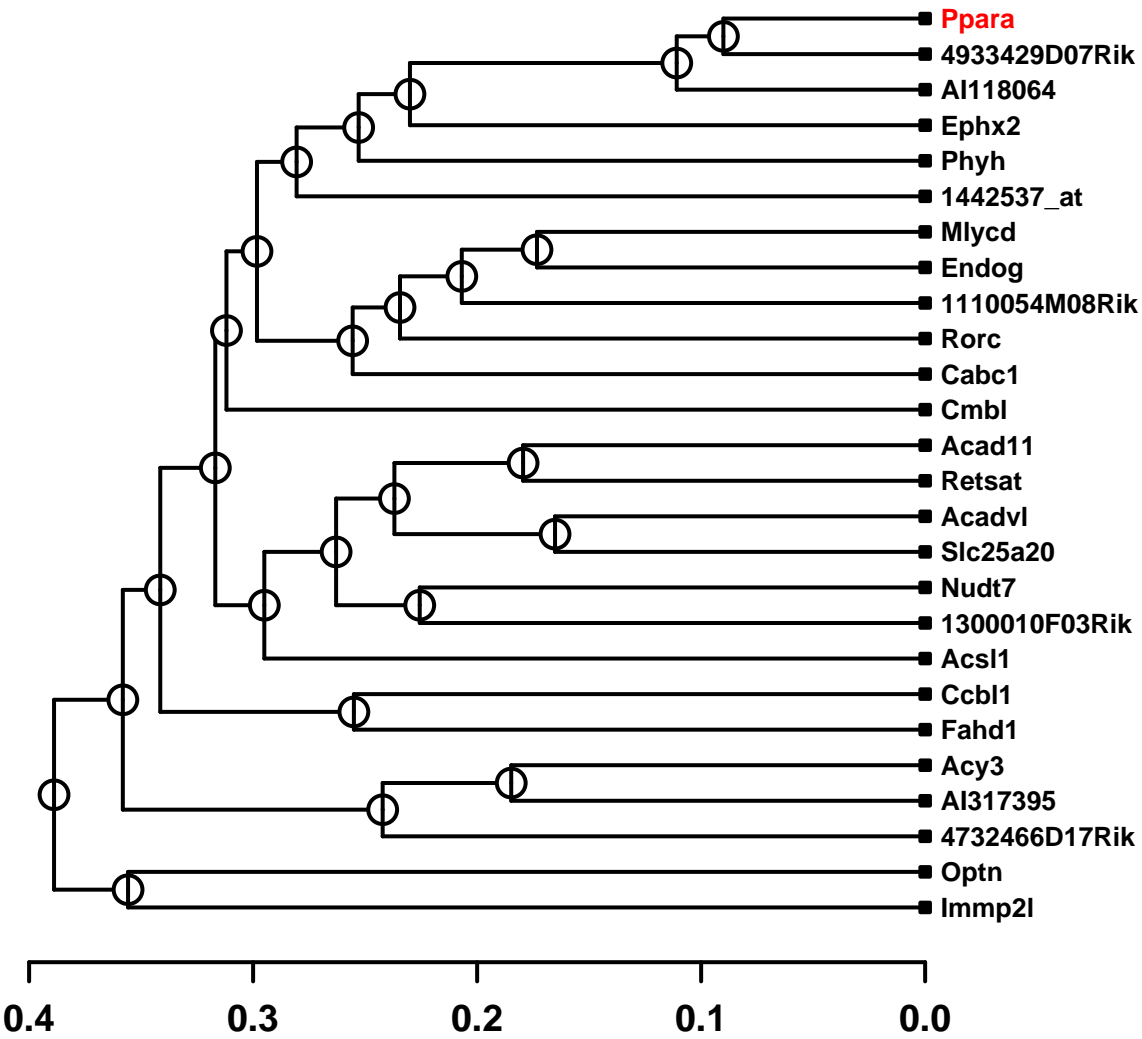
Per1



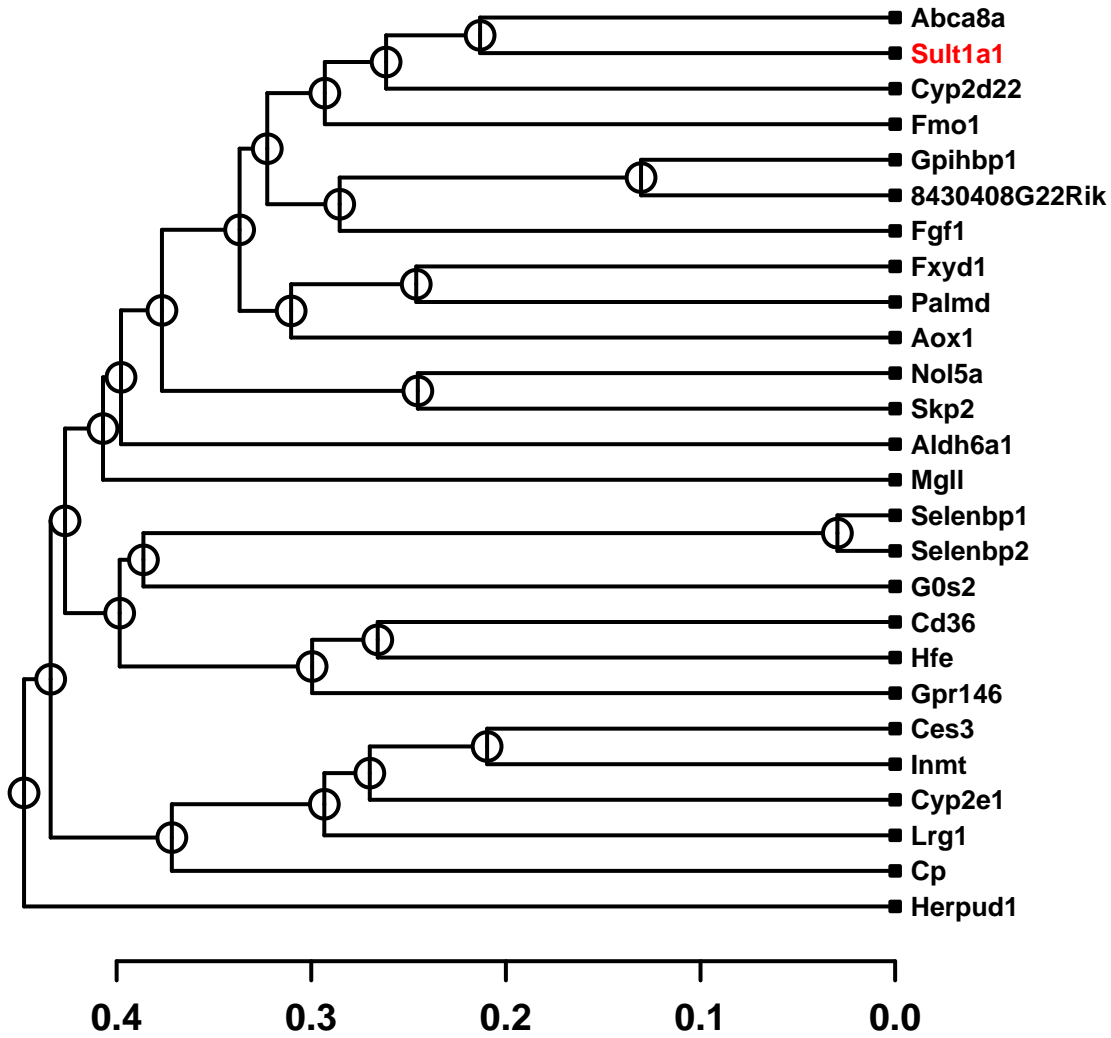
Per2



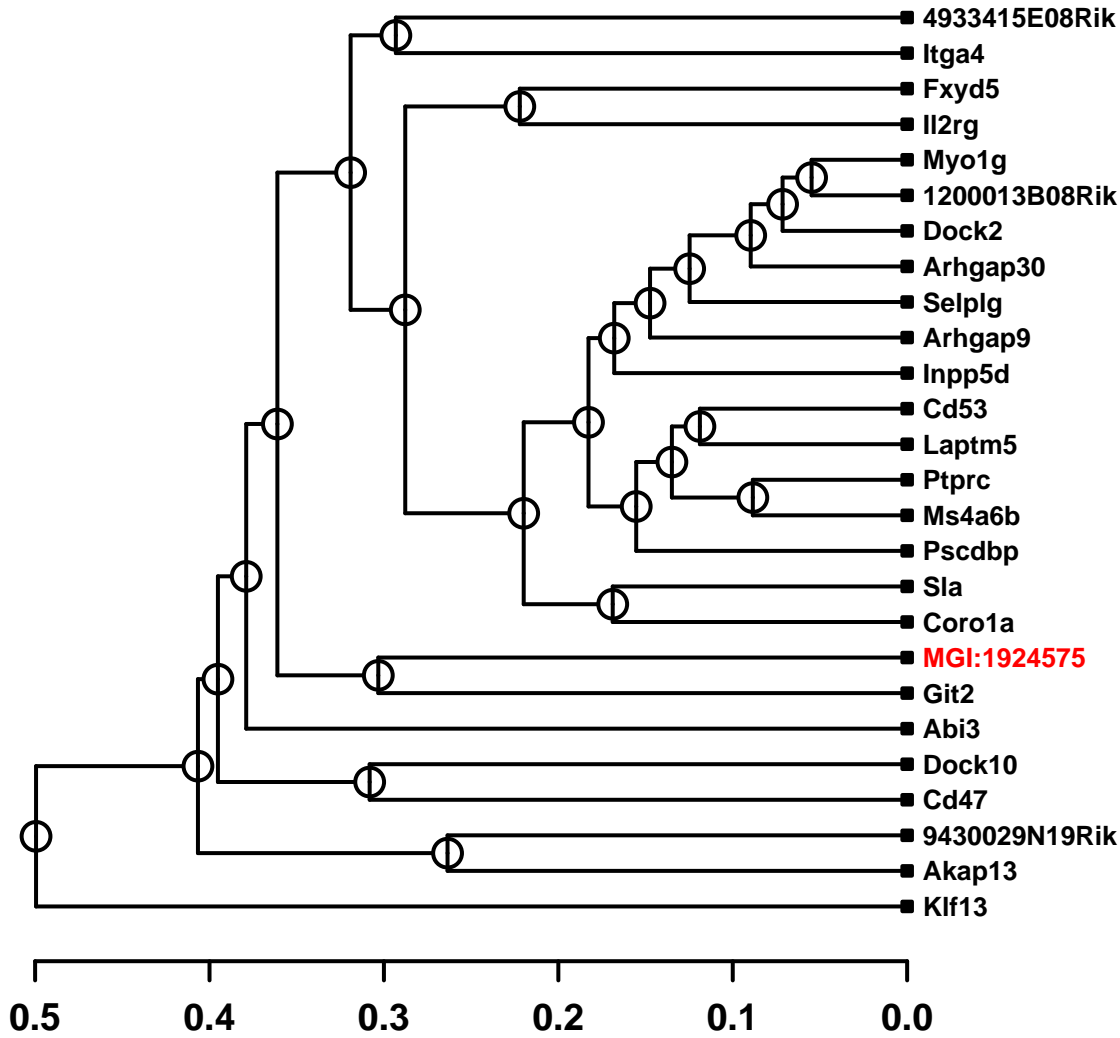
Ppara



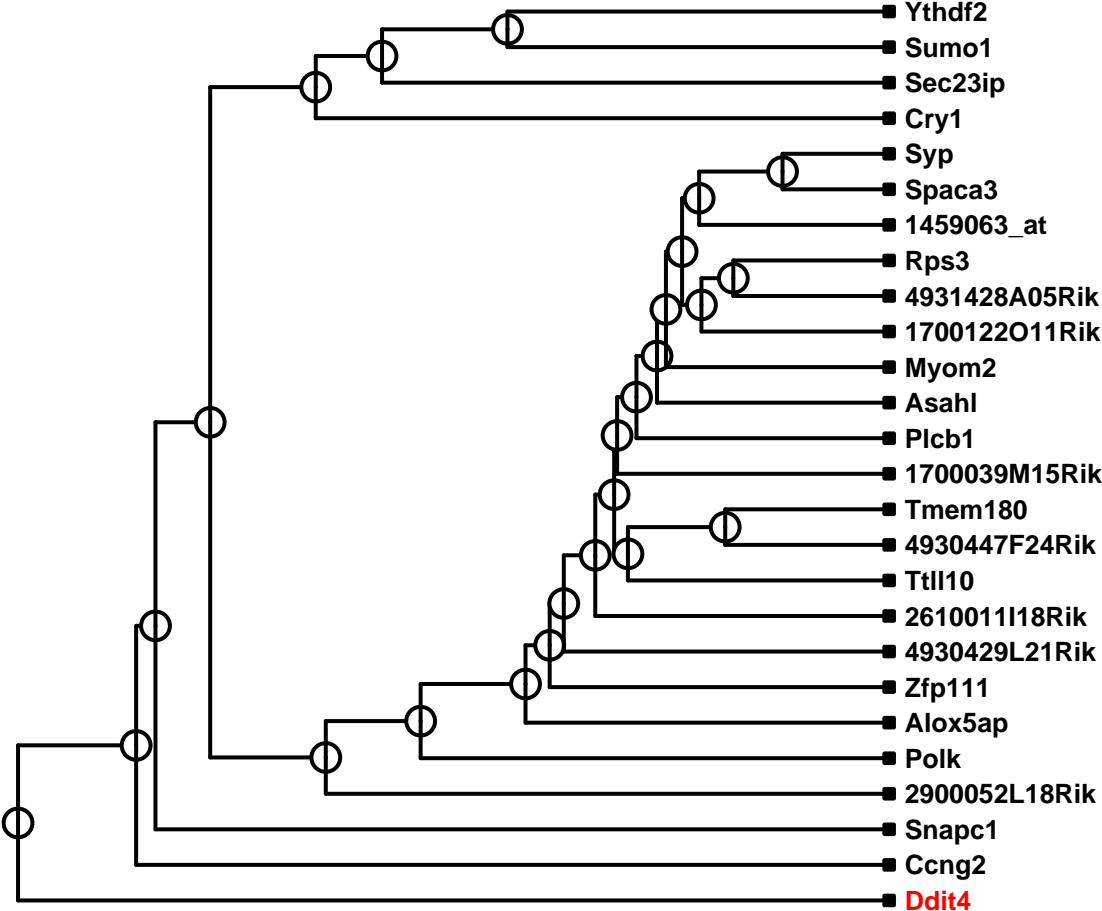
Sult1a1



MGI:1924575

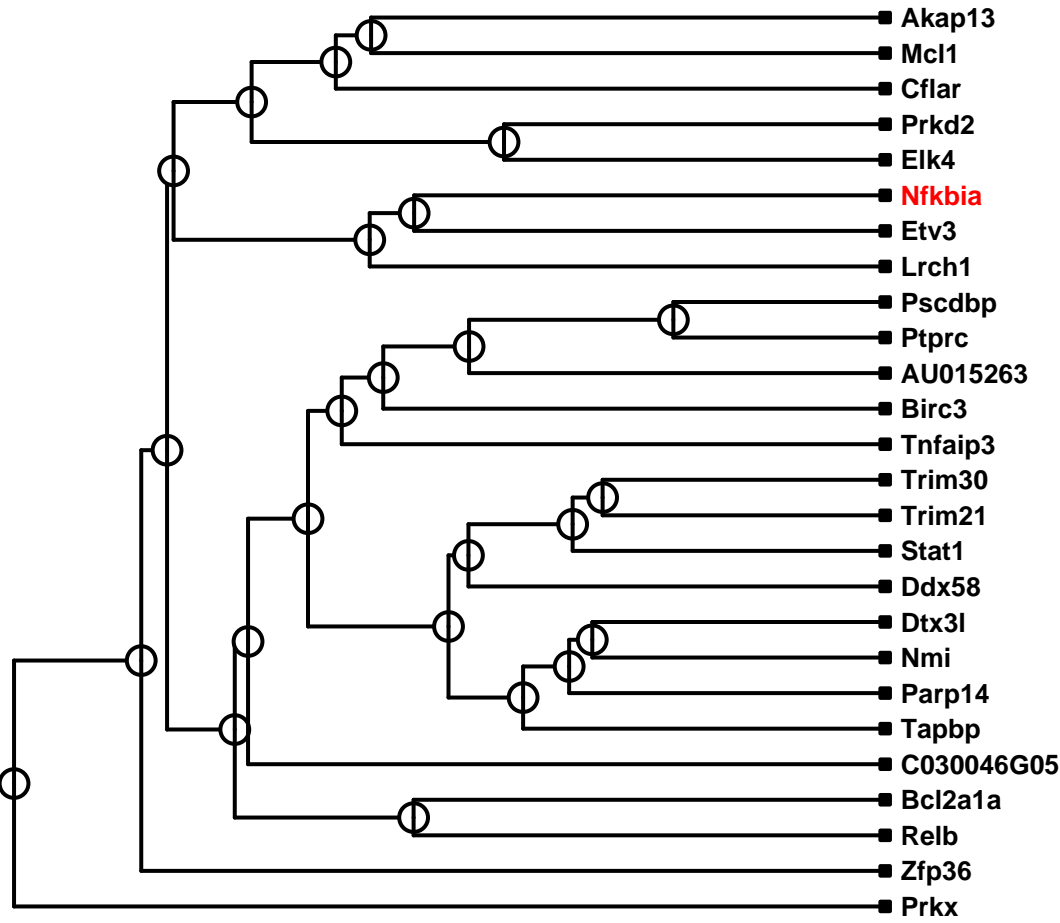


Ddit4



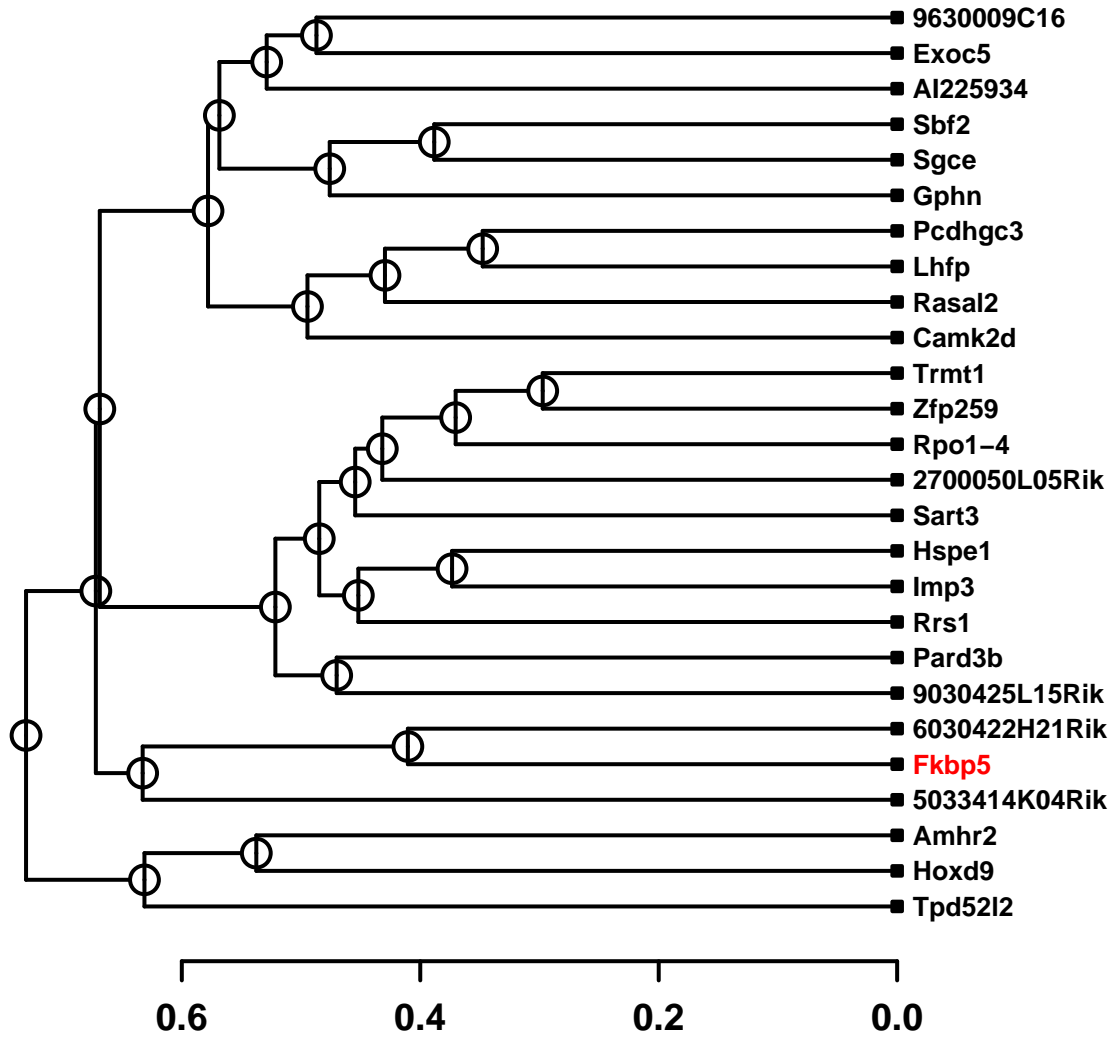
0.4 0.3 0.2 0.1 0.0

Nfkbia

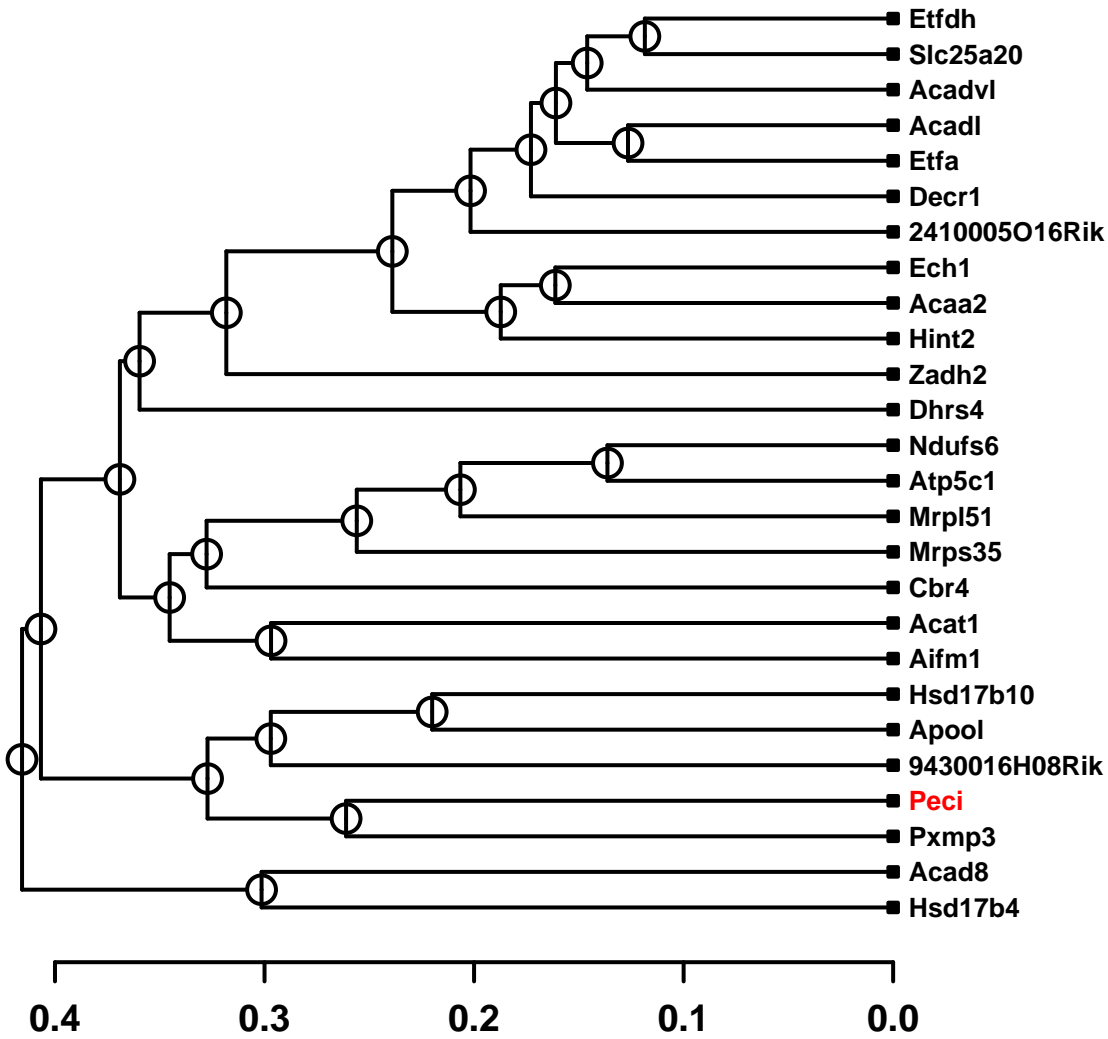


0.4 0.3 0.2 0.1 0.0

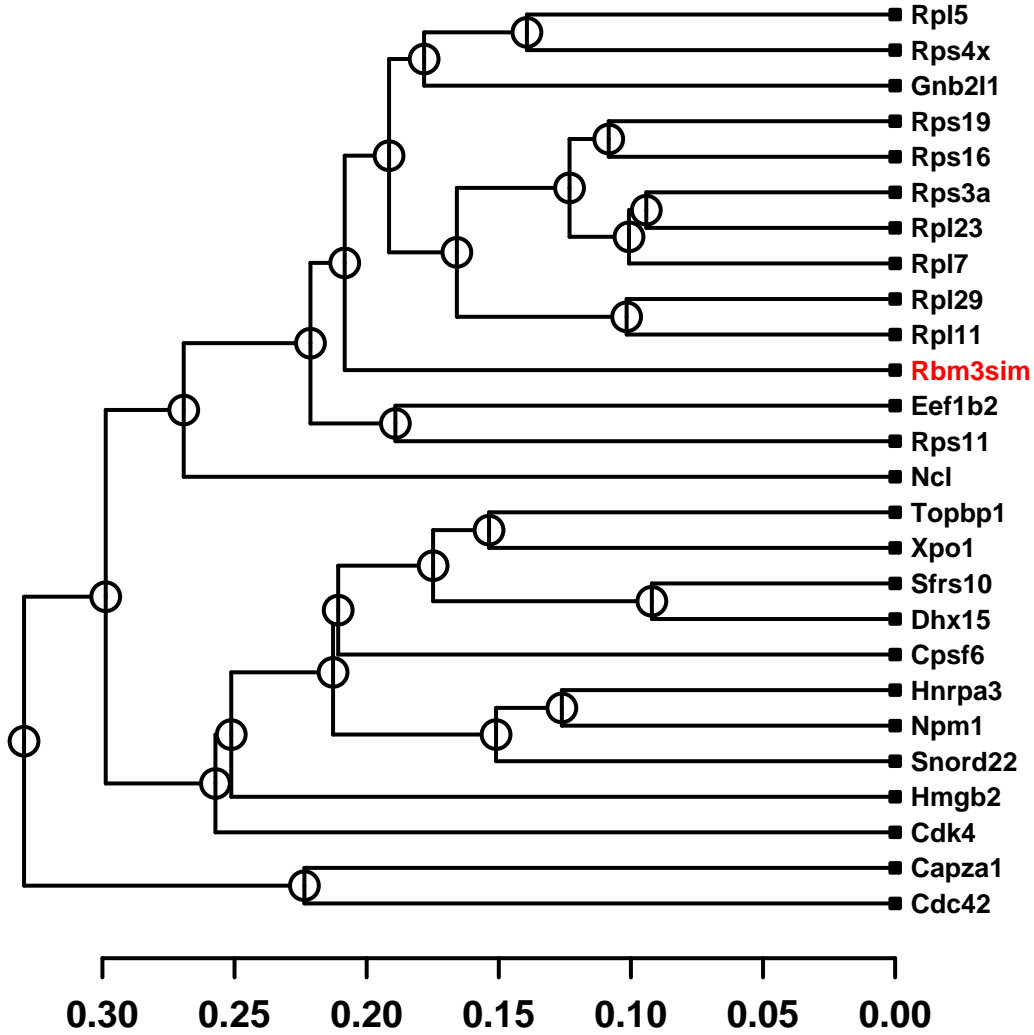
Fkbp5



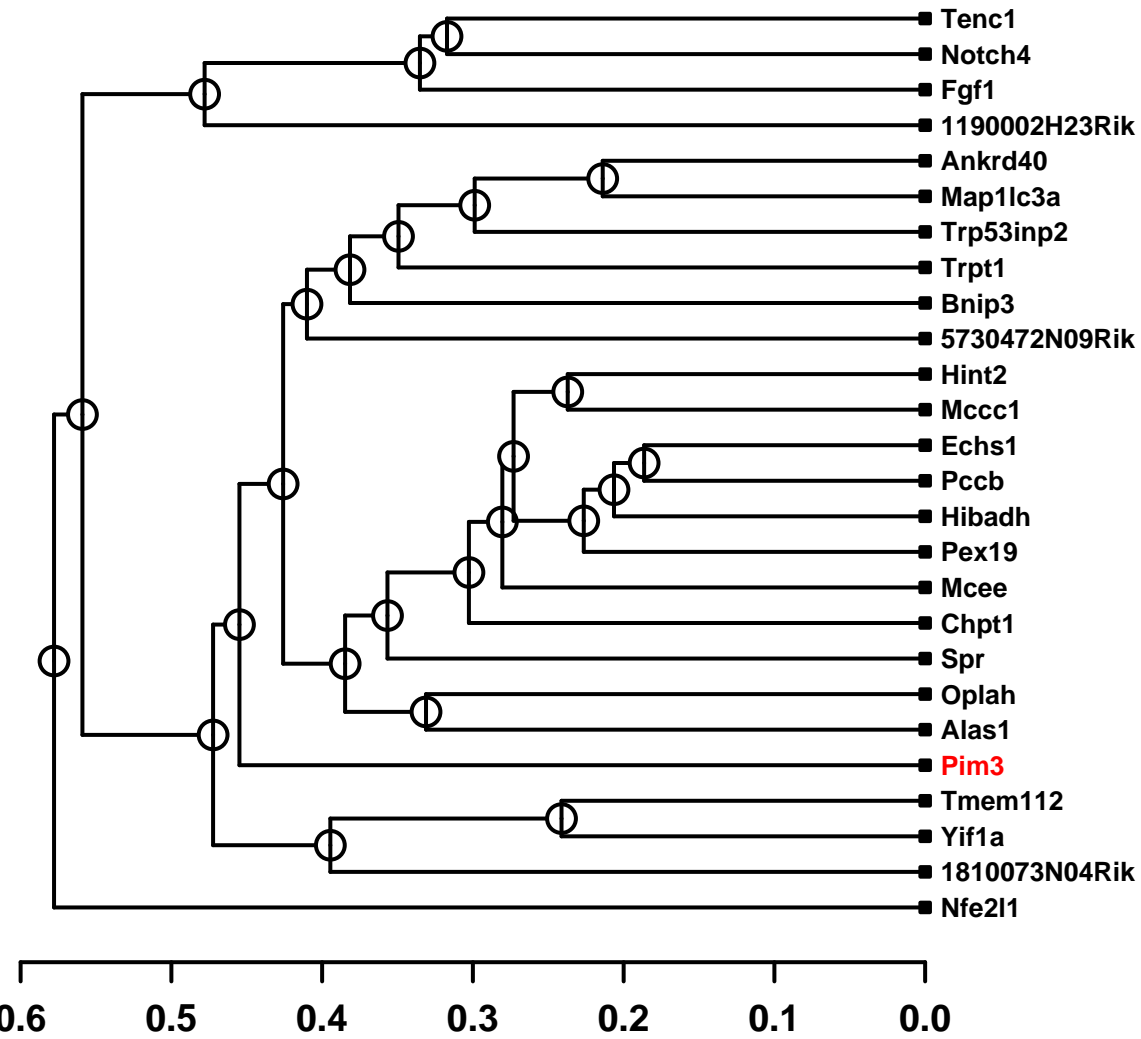
Peci



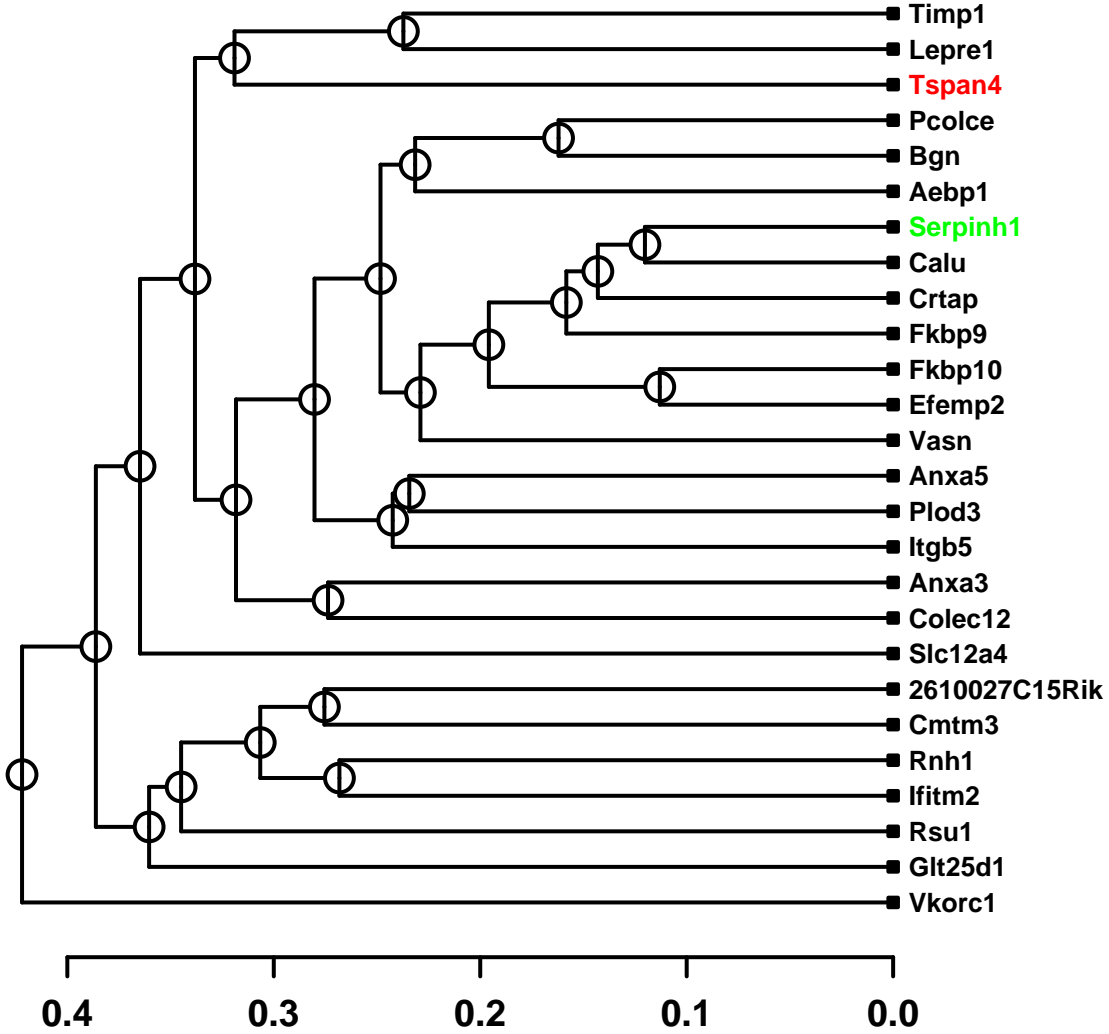
Rbm3sim



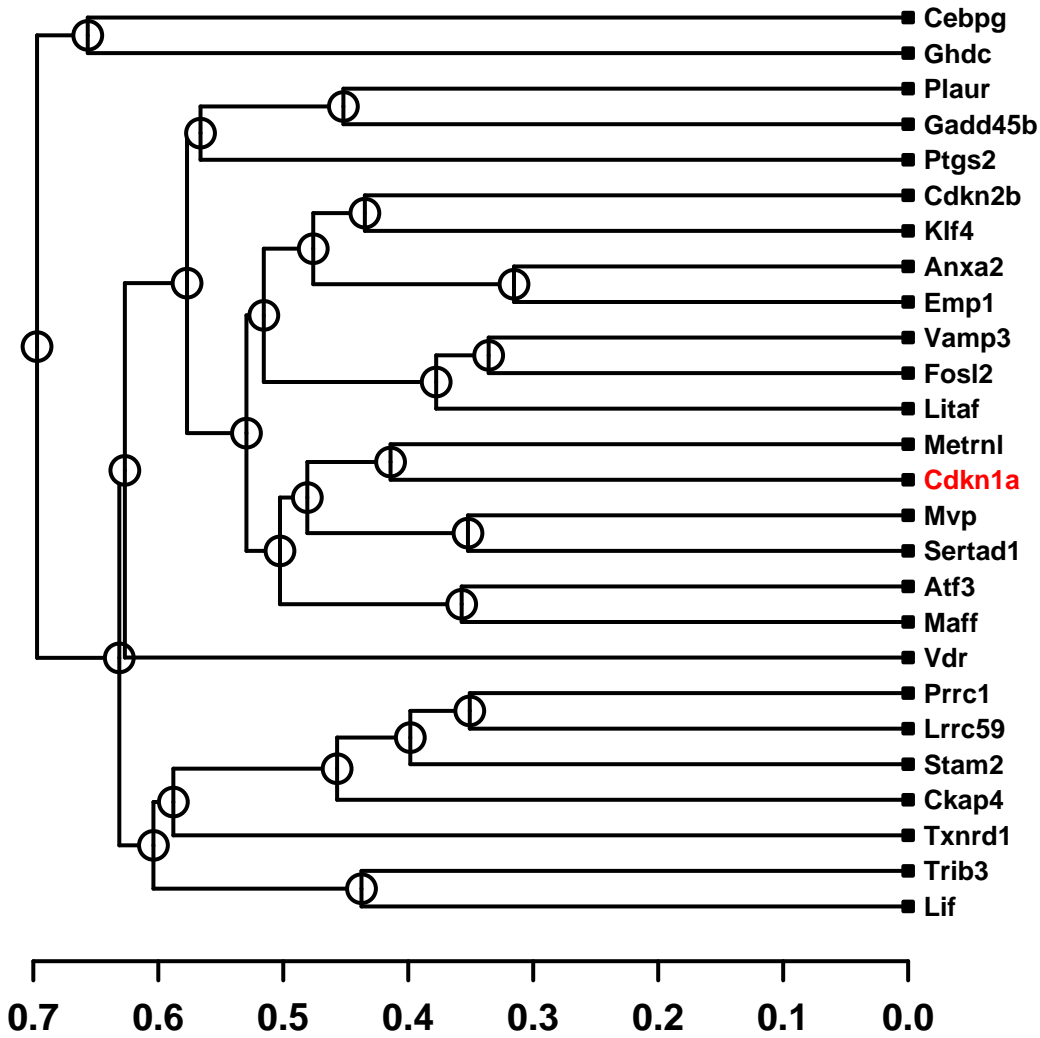
Pim3



Tspan4



Cdkn1a



Pnpla2

