

Supplementary information S2: Amphibian species list for two major centers of amphibian diversity, (1) Ranomafana National Park and (2) Analamazaotra/Mantadia National Park with surrounding forests

(1) Ranomafana National Park (112 species of which 31 CCS and UCS)

This list contains records from various sites within and directly adjacent to Ranomafana National Park (with maximum distances of less than 20 km between sites), and from three localities that are at ca. 10, 20 and 40 km east of Ranomafana village (Mahakajy, Ifanadiana, Ambohitsara). Several species that so far have only been recorded from these three sites (marked with asterisks) can be expected to occur in poorly explored low-altitude sites within the Park as well. CCS and UCS are marked reddish-brown.

Sites are coded as follows:

- (1) Ranomafana village , 21°15'41"S,47°27'34"E.
- (2) Ambatolahy forest, 21°14'37"S,47°25'34"E.
- (3) Ranomafana National Park entrance, 21°9'10"S,47°31'39"E.
- (4) Talatakely, 21°15'50"S,47°25"E.
- (5) Vohiparara, 21°15'30"S,47°24"E.
- (6) Ranomafanakely, 21°14'55"S,47°22'18"E.
- (7) Maharira, 21°19'32"S,47°24'8"E.
- (8) Mangevo, 21°23'13"S,47°27'18"E.
- (9) Ambohitsara, 21°21'25"S,47°48'56"E.
- (10) Mahakajy Private Reserve, 21°16'45"S,47°31'49"E.
- (11) road Ifanadiana - Tolongoina, 21°21'12"S,47°36'28"E.

Family Ptychadenidae

Ptychadena mascareniensis (1, 2, 9)

Family Hyperoliidae

Heterixalus alboguttatus (1, 9)

Heterixalus betsileo (1, 2)

Family Microhylidae

Anodonthyla boulengeri (1, 10)

Anodonthyla moramora (5)

Anodonthyla sp. 1 (7)

Anodonthyla sp. 4 (7)

Platypelis pollicaris (4, 7)

Platypelis grandis (5, 4)

Platypelis tuberifera (4)

Platypelis cf. *cowani* (9)*

Plethodontohyla brevipes (2)

Plethodontohyla cf. *bipunctata* (7, 4)

Plethodontohyla inguinalis (5)

Plethodontohyla mihanika (4)
Plethodontohyla ocellata (8)*
Plethodontohyla notosticta (8)

Stumpffia sp. 9 (1, 10)
Stumpffia cf. *tridactyla* (7)
Stumpffia cf. *tetradactyla* (9)*

Paradoxophyla palmata (1, 6)
Scaphiophryne spinosa (1, 4)

Family Mantellidae

Aglyptodactylus madagascariensis (5)
Aglyptodactylus sp. 3 (1)
Boophis albilabris (2, 4)
Boophis albipunctatus (8)*
Boophis andohahela (2)
Boophis bottae (5, 6)
Boophis elenae (5, 7)
Boophis guibei (3, 7)
Boophis lilianae (11)*
Boophis madagascariensis (3, 6)
Boophis majori (5, 7)
Boophis cf. *mandraka* (2)
Boophis marojezensis (2, 7)
Boophis microtypanum (7)
Boophis opisthodon (11)*
Boophis pauliani (7)
Boophis periegetes (7)
Boophis picturatus (5, 7, 9)
Boophis pyrrhus (11)
Boophis rappiodes (1, 6)
Boophis reticulatus (2, 5)
Boophis rhodoscelis (6)
Boophis schuboeae (2, 5)
Boophis tasymena (5, 6)
Boophis tephraeomystax (1)
Boophis viridis (9)*
Boophis sp. 8 (6)
Boophis sp. 13 (6)
Boophis sp. 15 (2)
Boophis sp. 16 (2, 5, 9)
Boophis sp. 17 (2)
Boophis sp. 22 (1, 2, 6)
Boophis sp. 29 (10)*
Boophis sp. 30 (6)
Boophis sp. 35 (4, 6)
Boophis sp. 37

Boophis sp. 38

Boophis sp. 42

Blommersia blommersae (1, 5)

Blommersia domerguei (7)

Blommersia grandisonae (11)*

Blommersia sp. 9 (5)

Gephyromantis blanci (5, 6, 7)

Gephyromantis cf. *boulengeri* (2, 9, 11)

Gephyromantis enki (4, 5, 6, 7)

Gephyromantis runewsweeki (5, 7)

Gephyromantis cf. *asper* (6)

Gephyromantis plicifer (4)

Gephyromantis redimitus (8)

Gephyromantis sculpturatus (4, 9, 11)

Gephyromantis tschenki (2, 3, 4)

Gephyromantis malagasius (9)

Gephyromantis ventrimaculatus (5, 6)

Gephyromantis sp. 8 (9)*

Gephyromantis sp. 9 (3, 5)

Gephyromantis sp. 13 (5)*

Guibemantis liber (3, 5)

Guibemantis pulcher (5, 7)

Guibemantis depressiceps (3)

Guibemantis timidus (11)*

Guibemantis tornieri (2, 3)

Guibemantis sp. 7 (5, 7)

Guibemantis sp. 12 (3)

Mantella baroni (5, 6, 7, 8)

Mantella bernhardi (9)*

Mantella madagascariensis (5, 6)

Mantidactylus argenteus (8)

Mantidactylus alutus (6)

Mantidactylus betsileanus (3)

Mantidactylus femoralis (6)

Mantidactylus majori (2, 4, 5, 7)

Mantidactylus melanopleura (5, 7)

Mantidactylus delormei (7)

Mantidactylus opiparis (5)

Mantidactylus grandidieri (4, 5, 8, 9)

Mantidactylus cf. *lugubris* (1, 2, 4, 7, 10, 11)

Mantidactylus sp. 1 (4)

Mantidactylus sp. 13 (10)

Mantidactylus sp. 24 (2)

Mantidactylus sp. 28 (7)

Mantidactylus sp. 44 (9)

Mantidactylus sp. 47 (2)

Mantidactylus sp. 58

Mantidactylus sp. 59

Spinomantis aglavei (5)

Spinomantis elegans (7)

Spinomantis peraccae (7)

Spinomantis fimbriatus (2, 5)

Spinomantis sp. 7 (7)

Spinomantis sp. 8 (7)

(2) Mantadia/Analamazoatra National Park and nearby forests (94 species of which 10 CCS and UCS)

Analamazoatra Special Reserve and Mantadia National Park form a complex of protected areas together with several other sites of which we here also include Vohidrazana, Torotorofotsy and An'Ala. The amphibian diversity around Andasibe is exceptional considering that the surveyed sites all are within a similar elevational zone (ca. 800-1100 m), with a maximum distance between collecting sites of 20 km.

- (1) Andasibe village, 18°56'S,48°25'E.
- (2) Analamazoatra, 18°56'S,48°25'E.
- (3) Analamazoatra Reserve entrance and Feon'ny Ala hotel surroundings, ca. 18°56'S,48°25'E
- (4) Analamazoatra - Andasibe water supply dam, ca. ca. 18°56'S,48°25'E
- (5) Mantadia, 18°48'54"S,48°28'32"E.
- (6) Torotorofotsy, 18°52'29"S,48°22'E.
- (7) Vohidrazana and Ambavaniasy village, 18°57'58"S,48°30'E.
- (8) An'Ala, 18°56'S,48°28'E.

Family Ptychadenidae

Ptychadena mascareniensis (1, 2, 6, 7)

Family Hyperoliidae

Heterixalus betsileo (3)

Heterixalus madagascariensis (7)

Heterixalus punctatus (3)

Family Microhylidae

Anodonthyla boulengeri (2, 8)

Platypelis barbouri (2, 8)

Platypelis grandis (2, 8)

Platypelis pollicaris (2)

Platypelis tuberifera (8)

Plethodontohyla alluaudi (2, 6)

Plethodontohyla inguinalis (8)

Plethodontohyla mihanika (2, 3)

Plethodontohyla notosticta (2)

Stumpffia sp. 8 (2)

Stumpffia sp. 6 (2)

Paradoxophyla palmata (2, 4)

Scaphiophryne marmorata (2)

Scaphiophryne spinosa (8)

Family Mantellidae

Aglyptodactylus madagascariensis (2)

Boophis albilabris (2)
Boophis albipunctatus (2)
Boophis boehmei (2, 4)
Boophis bottae (2, 3)
Boophis burgeri (4)
Boophis elenae (8)
Boophis feonnyala (3)
Boophis goudoti (3, 4)
Boophis guibei (3, 4)
Boophis idae (3, 6)
Boophis liami (7)
Boophis lichenoides (8)
Boophis luteus (1, 2, 3, 4, 5, 6, 7, 8)
Boophis madagascariensis (2, 6, 8)
Boophis marojezensis (7, 8)
Boophis pauliani (3)
Boophis picturatus (2, 8)
Boophis pyrrhus (3, 8)
Boophis rappiodes (3)
Boophis reticulatus (8)
Boophis rufioculis (8)
Boophis sibilans (4)
Boophis solomaso (7)
Boophis tasymena (3)
Boophis tephraeomystax (1, 3, 7)
Boophis viridis (3)
Boophis sp. 2 (7)
Boophis sp. 17 (8)
Boophis sp. 36 (3, 8)

Blommersia blommersae (2, 3)
Blommersia domerguei (6)
Blommersia grandisonae (2, 8)
Blommersia sarotra (1, 3)

Gephyromantis asper (8)
Gephyromantis boulengeri (2)
Gephyromantis cornutus (2, 4)
Gephyromantis eiselti (2, 7)
Gephyromantis moseri (2, 4)
Gephyromantis redimitus (7, 8)
Gephyromantis sculpturatus (2, 8)
Gephyromantis thelenae (5)
Gephyromantis ventrimaculatus (2)
Gephyromantis sp. 13 (4)

Guibemantis depressiceps (3)

Guibemantis flavobrunneus (2)
Guibemantis kathrinae (8)
Guibemantis liber (2, 3)
Guibemantis pulcher (2)
Guibemantis tornieri (3)
Guibemantis sp. 3 (2)

Mantella aurantiaca (6)
Mantella baroni (5, 7)
Mantella crocea (6)
Mantella pulchra (8)

Mantidactylus aerumnalis (8)
Mantidactylus albofrenatus (2)
Mantidactylus argenteus (5, 8)
Mantidactylus betsileanus (2, 3)
Mantidactylus cowanii (5)
Mantidactylus femoralis (2, 8)
Mantidactylus grandidieri (2, 7, 8)
Mantidactylus lugubris (2, 5, 7)
Mantidactylus melanopleura (2, 5, 8)
Mantidactylus mocquardi (2, 4)
Mantidactylus opiparis (2, 8)
Mantidactylus cf. *tricinctus*
Mantidactylus zipperi (8)
Mantidactylus zolitschka (8)
Mantidactylus sp. 28 (8)
Mantidactylus sp. 34 (7)
Mantidactylus sp. 23 (2)

Spinomantis aglavei (2, 4, 8)
Spinomantis fimbriatus (4)
Spinomantis peraccae (8)
Spinomantis phantasticus (4)

Supplementary Information S1.

Extended methods on DNA sequencing and analysis.

A fragment of the mitochondrial 16S rRNA gene was amplified and sequenced using primers 16SraL and 16SrbH using standard procedures (1). Altogether, ca. 1700 adult specimens and 1150 tadpoles of Malagasy frogs were sequenced in 2000-2007. We used the FFT-NS-2 algorithm in the software MAFFT v. 6.624 (2) for a multiple alignment of these sequences, and manually verified the resulting alignment. Based on Neighbor-joining trees obtained with PAUP* (3) we identified sequences showing high divergences from reference specimens of described species. Selected sequences were used to compute a tree using Bayesian inference (4) after determining the appropriate substitution model (5). This tree (see below), largely agrees with published phylogenetic knowledge, although a few well-established clades are not recovered due to the limited phylogenetic information in the short gene fragment. Phylogeographic analyses of three complexes of deep genealogical lineages (*Boophis majori* / *B. sp. 35*, *B. luteus*, *Guibemantis liber*; Fig. 2) were computed using the same general methods.

While we use the tree based on the MAFFT alignment to show the distribution of undescribed diversity across major clades, possible alignment artefacts in the distribution of indels in this non-coding DNA fragment can affect the computation of pairwise distances between sequences. To avoid this problem we used the software TaxI (6) to compute uncorrected pairwise distances between all species pairs of Malagasy frogs. This software first aligns each possible pair of sequences and then calculates the number of differences between them, not counting positions with indels. From the distance matrices obtained, we extracted the shortest distance of each included taxon to the most similar sequence overall, and to the most similar sequence of an already described species.

Further definitions of categories of Candidate species.

In Microbiology, a *Candidatus* status is regularly ascribed to distinct prokaryotic entities for which more than just a sequence is available but characteristics required for description according to the Bacteriological Code (1990 Revision) are lacking. Although we see the need for standardized terms to refer to such distinct but yet undescribed animal species, we do not propose to recognize candidate species as done by the microbiological community, where an official *Candidatus* list exists. One reason is that the requirements to define and describe a new species are less strict in zoology than in microbiology where minimum standards are defined by official committees.

In our study, when genealogical lineages were not sister to those species that are most similar morphologically or bioacoustically, we used this as additional confirmation for CCS status, which however we primarily determined through a combination of distance- and character-based methods. In this concordance approach, divergent individuals are first identified by distance-based DNA barcoding. If the divergence to described species is above a certain threshold, which will differ among groups of organisms, there is a high probability that the individual belongs to an undescribed species which warrants its inclusion in the UCS category. However, it cannot be emphasized enough that the DNA barcoding approach alone is insufficient to reach

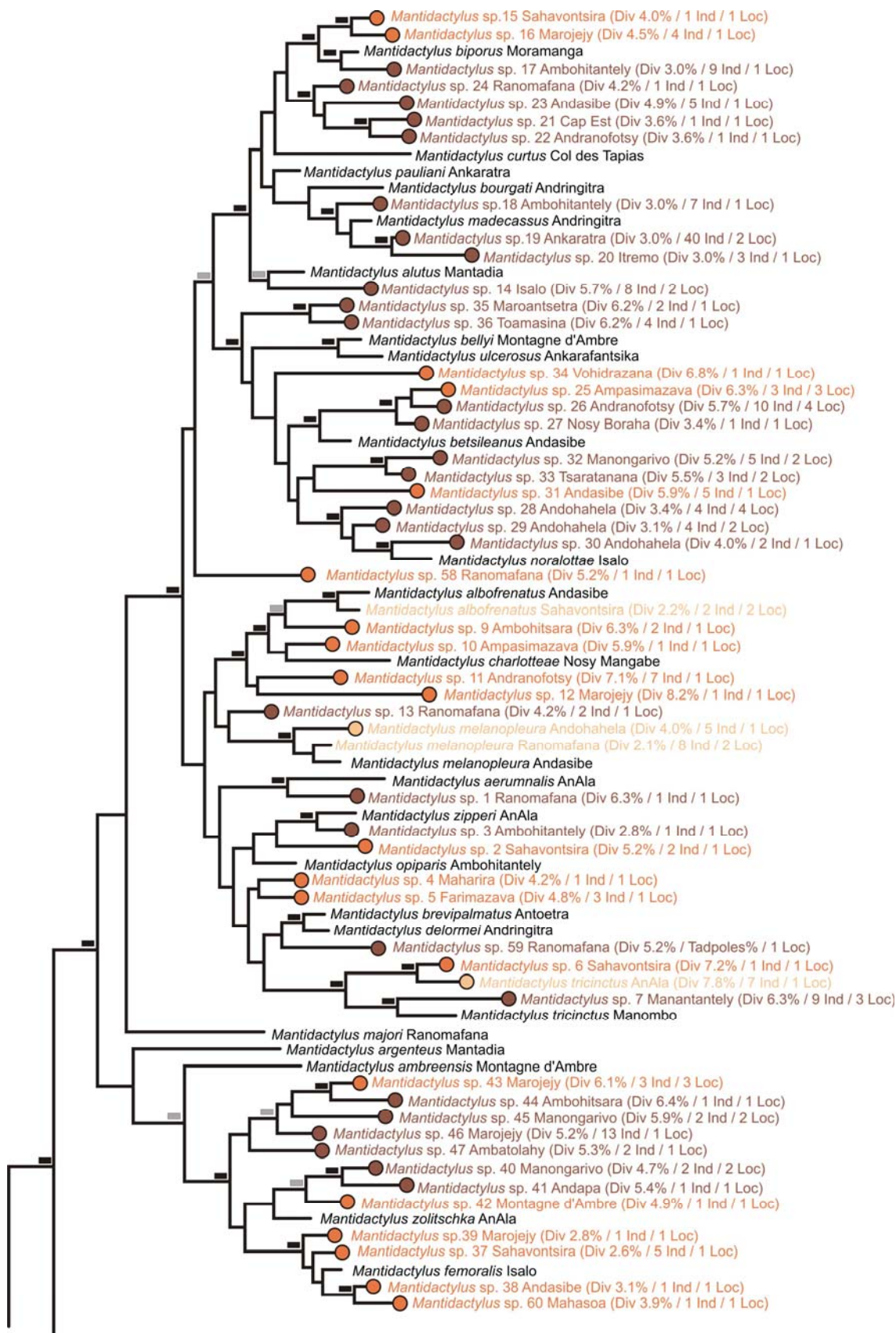
CCS status. The second mandatory step is the search for diagnostic characters in morphology and, especially, in advertisement calls. If the genetically divergent frog individual differs convincingly in such characters, or if slight but consistent differences are detected in sympatry, it is categorized as CCS. If the differences are only slight and it occurs in allopatry, it is to be considered as DCL.

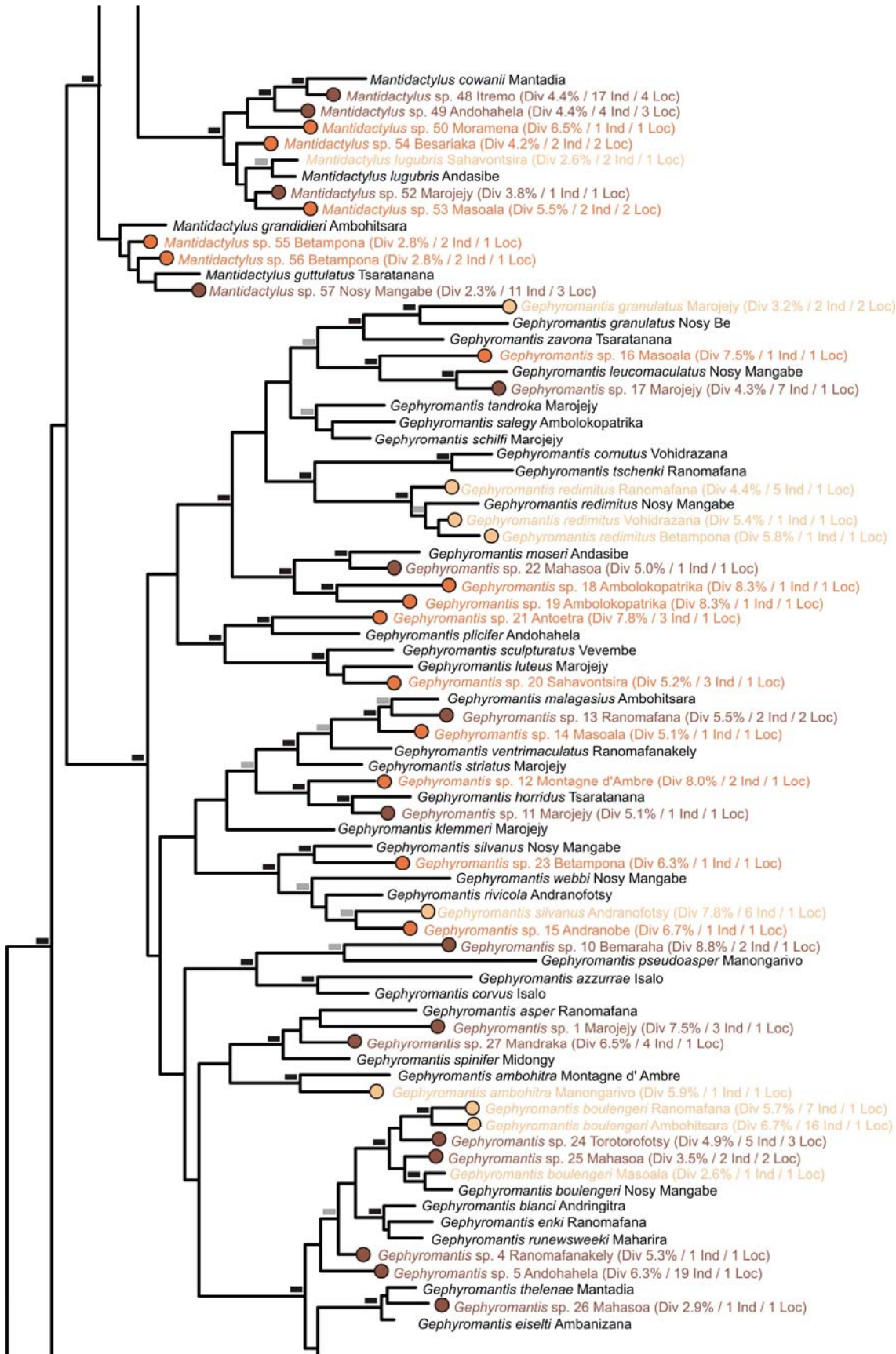
Criteria of reciprocal monophyly of haplotype lineages are extremely useful in species delimitation. To assess monophyly or non-monophyly with statistical support, however, often requires longer DNA sequences than usually become available from DNA barcoding studies, and therefore was used only peripherally in our approach to define candidate species.

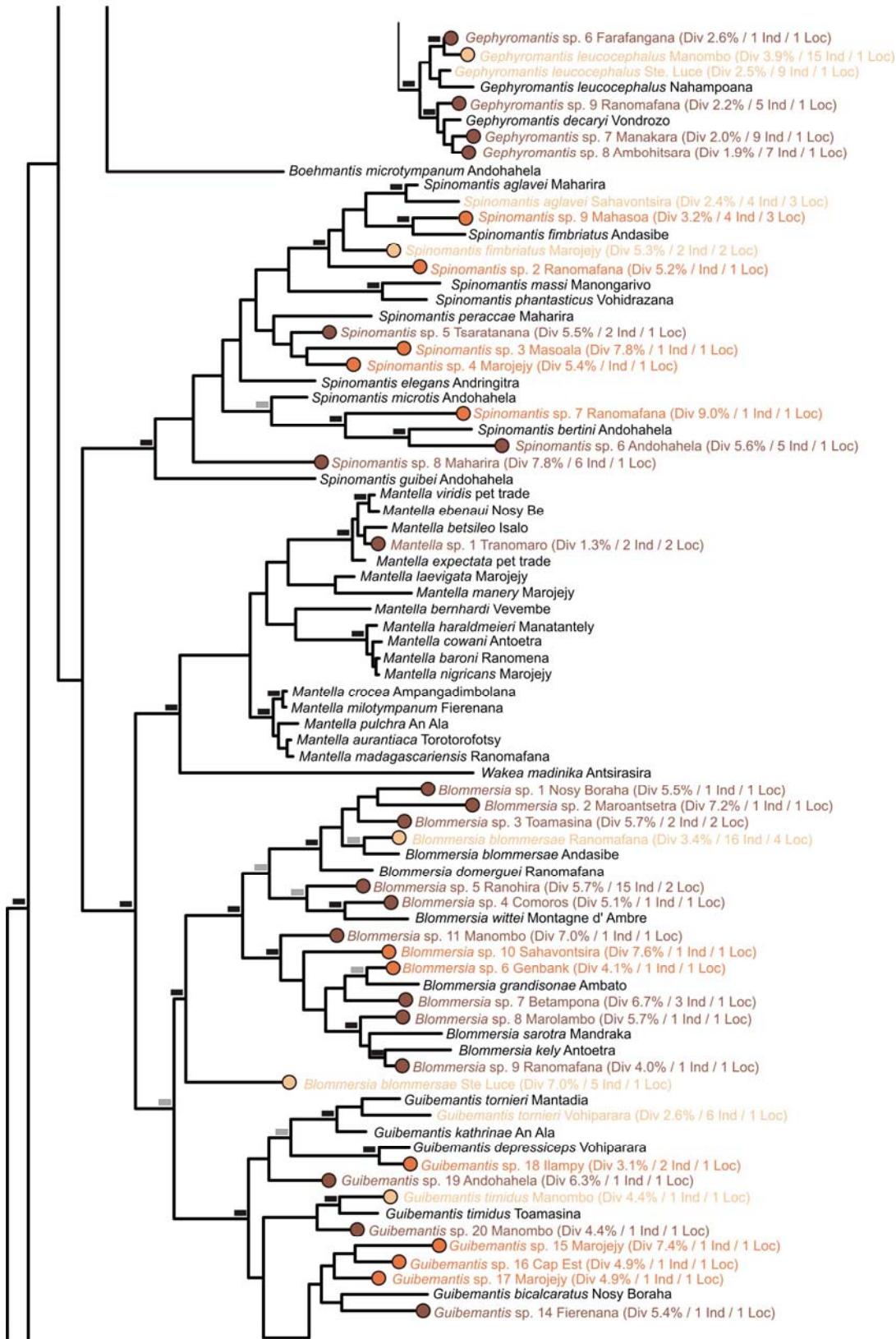
Supplementary references.

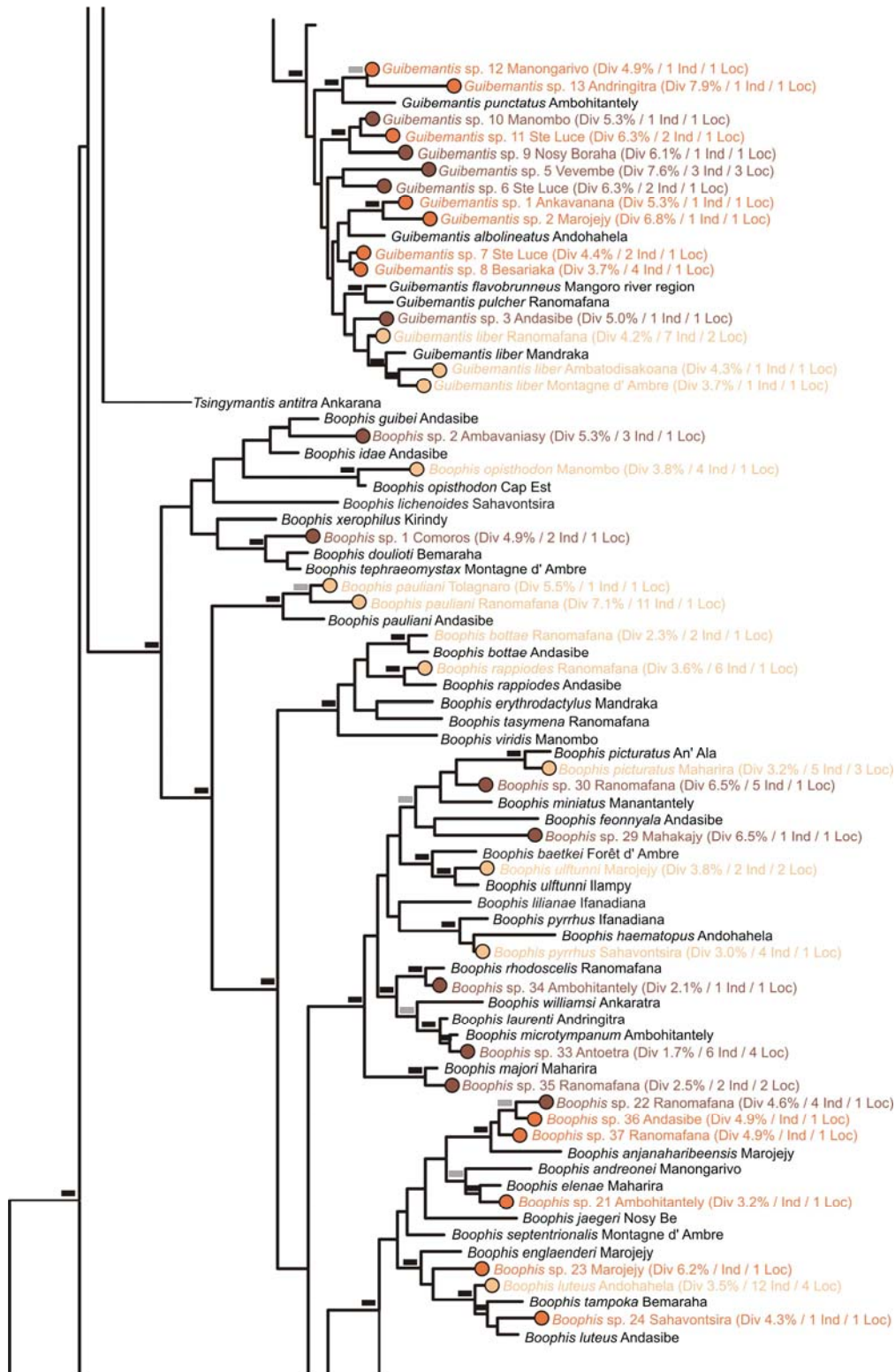
1. Vences M, Thomas M, Bonett RM, Vieites DR (2005) Deciphering amphibian diversity through DNA barcoding: chances and challenges. *Phil Trans Roy Soc Lond Ser B* 360:1859–1868.
2. Katoh K, Misawa K, Kuma K, Miyata T (2002) MAFFT: a novel method for rapid multiple sequence alignment based on fast Fourier transform. *Nuc Acid Res* 30:3059–3066.
3. Swofford DL (2002) PAUP*. *Phylogenetic Analysis Using Parsimony (* and other methods)*, Version 4b10. Sinauer Associates, Sunderland, Massachusetts.
4. Huelsenbeck JP, Ronquist F (2001) MRBAYES: Bayesian inference of phylogenetic trees. *Bioinf* 17:754–755.
5. Nylander JAA (2004) *MrModeltest v2*. Program distributed by the author. Evolutionary Biology center, Uppsala University.
6. Steinke D, Salzburger W, Vences M, Meyer A (2005) TaxI - A software tool for DNA barcoding using distance methods. *Phil Trans Roy Soc Lond Ser B* 360:1975–1980.
7. Chiari Y, Orozco-terWengel P, Vences M, Vieites DR, Sarovy A, Randrianirina JE, Meyer A, Louis Jr E (2006) Genetic identification of units for conservation in tomato frogs, genus *Dyscophus*. *Conserv. Genet.* 7:473-482.
8. Chiari Y, Vences M, Vieites DR, Rabemananjara F, Bora P, Ramilijaona Ravoahangimalala O, Meyer A (2004) New evidence for parallel evolution of colour patterns in Malagasy poison frogs (*Mantella*). *Mol. Ecol.* 13:3763-3774.
9. Crottini A, Chiari Y, Mercurio V, Meyer A, Vences M, Andreone F (2008) Into the canyons: the phylogeography of the Malagasy frogs *Mantella expectata* and *Scaphiophryne gottlebei* in the arid Isalo Massif, and its significance for conservation (Amphibia: Mantellidae and Microhylidae). *Org. Divers. Evol.* 8:368-377.

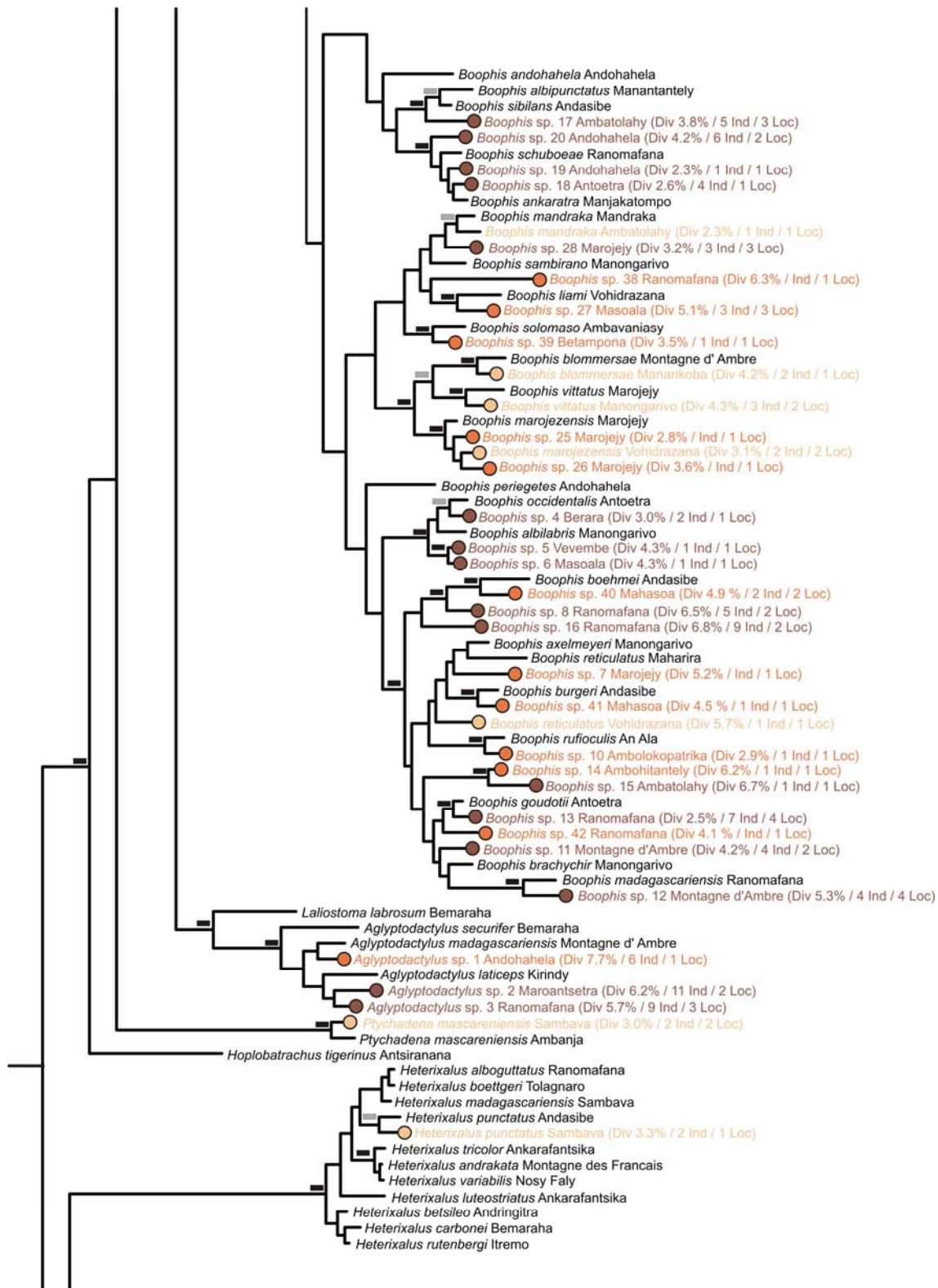
10. Rabemananjara FCE, Crottini A, Chiari Y, Andreone F, Glaw F, Duguet R, Bora P, Ravoahangimalala Ramilijaona O, Vences M (2007) Molecular systematics of Malagasy poison frogs in the *Mantella betsileo* and *M. laevigata* species groups. *Zootaxa* 1501:31-44.
11. Rabemananjara FCE, Chiari Y, Ravoahangimalala Ramilijaona O, Vences M (2007) Evidence for recent gene flow between north-eastern and south-eastern Madagascar from a phylogeography of the *Mantella cowani* group. *Front. Zool.* 4:article 1
12. Vieites DR, Chiari Y, Vences M, Andreone F, Rabemananjara F, Bora P, Nieto-Román S, Meyer, A (2006) Mitochondrial evidence for distinct phylogeographic units in the endangered Malagasy poison frog *Mantella bernhardi*. *Mol. Ecol.* 15:1617-1625.
13. Wollenberg KC, Glaw F, Meyer A, Vences M (2007) Molecular phylogeny of Malagasy reed frogs, *Heterixalus*, and the relative performance of bioacoustics and color-patterns for resolving their systematics. *Mol. Phylogenet. Evol.* 45:14-22.
14. Wollenberg KC, Vieites DR, van der Meijden A, Glaw F, Cannatella DC, Vences M (2008) Patterns of endemism and species richness in Malagasy cophyline frogs support a key role of mountainous areas for speciation. *Evolution* 62:1890-1907.
15. Glaw F, Vences M (2007) A Field Guide to the Amphibians and Reptiles of Madagascar. Third Edition. Köln, Vences & Glaw, 496 pp.

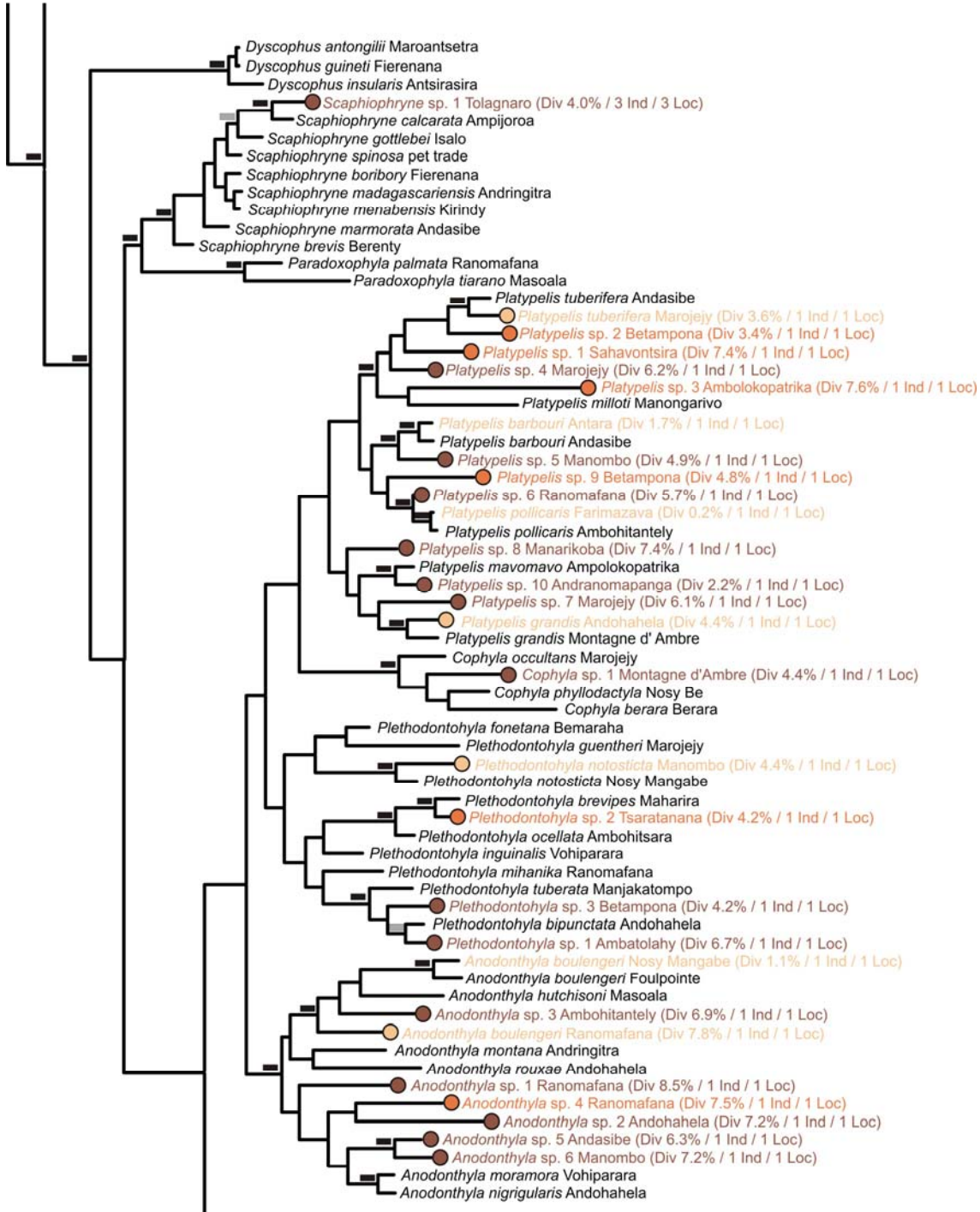














Supplementary figure 1. Detailed phylogenetic tree of Malagasy amphibians and further information on analysis methods.

The following subtrees are enlarged views of the phylogenetic tree shown in Fig. 1a. Each undescribed lineage is further denoted with collecting locality, and, in parentheses, the lowest genetic divergence (uncorrected p-distance) to the closest described species, and the number of individuals and localities for which 16S rDNA sequences of the new species are available. For many of the confirmed candidate species, more individuals were available for morphological and bioacoustic study but were not sequenced. Also, for many lineages additional sequences from tadpole individuals were analysed but are not listed here. UCS lineages for which only tadpole sequences were available are denoted with "Tad".

For several species (most *Mantella*, *Dyscophus antongilii* and *D. guineti*, *Scaphiophryne gottlebei*, *Guibemantis liber*, and many *Gephyromantis*) large series of samples (up to 150 individuals per species) were studied for phylogeographic analysis; these sequences of a fragment of the cytochrome *b* gene are not listed here. These more detailed analyses, largely published elsewhere or in the process of publication (7-12) were helpful in confirming that (a) the high divergences within and between species and candidate species are reflected also in protein-coding mitochondrial genes and are no alignment artifact of the non-protein-coding 16S rRNA sequences which requires the use of gaps to account for insertions and deletions, and (b) that in some cases, extensive hybridization and admixture can occur in contact zones of deeply divergent haplogroups which thus are correctly defined as DCL. Furthermore, combined analysis of sequences of 16S rDNA, cytochrome *b*, and other genes, provided highly supported phylogenies that were screened to confirm that the 16S tree presented here reflects largely correct phylogenetic relationships: Hyperoliidae (13), Microhylidae (14), Mantellidae.

Taxonomy largely follows AmphibiaWeb (www.amphibiaweb.org). Following the most recent taxonomic account on Malagasy amphibians (15) we do not consider the following species: *Boophis hillenii* (probably synonym of *B. idae*); *Mantidactylus ambohitombi* (possible synonym of *M. curtus*); *Plethodontohyla angulifera*, *Scaphiophryne obscura* and *Scaphiophryne verrucosa* (historical taxa of unclarified taxonomic status).

Because Malagasy frogs are characterized by 100% endemism, the possibility that newly identified lineages belong to species already described from other countries can be disregarded. The moderate dimensions of the island, together with intensive fieldwork carried out between 1991 and 2007 throughout Madagascar, aided the collection of molecular data for all described species to date, except seven (*Spinomantis brunae*, *S. nussbaumi*, *S. tavaratra*, *Madecassophryne truebae*, *Platypelis alticola*, *P. tsaratananensis*, *P. tetra*, *P. cowani*, *Plethodontohyla guentherpetersi*). Hence, our analyses include virtually the whole described diversity of frogs from Madagascar, plus many other undescribed lineages.

The trees show additional UCS and DCL that differed by less than 3% divergence (not marked with circle symbols, except where phylogeny suggests a distant position from morphologically closest species) and two additional species from the Comoro Island of Mayotte. These were not included in the counts and graphs.

For construction of the tree we first compiled a dataset of all available 16S sequences of Malagasy frogs (2850 terminals) and also considered information from trees based on available cytochrome b sequences (about 1200 sequences). We then compiled a data set containing representatives of all described species, wherever possible originating from their type localities or even from type specimens, plus all deeply divergent lineages. Based on the first NJ tree the assignment of all sequences to genera and subgenera was unambiguous. For calculation of the final tree we constrained a number of nodes that are well-supported from previous studies that included concatenated sequences of various genes: (a) the Microhylidae, (b) the Cophylinae + Scaphiophryninae, (c) the Microhylidae + Hyperoliidae, (d) the Boophinae, (e) the Mantellinae, (f) *Gephyromantis* + *Boehmantis* + *Mantidactylus*, (g) *Wakea* + *Mantella*, (h) *Blommersia* + *Guibemantis*, (i) *Spinomantis* + *Blommersia* + *Guibemantis* + *Wakea* + *Mantella*, (j) the genus *Boophis*, and (k) the subgenus *Chonomantis* in *Mantidactylus*.

Name as in tree	Name as in Glaw & Vences (2007)	Locality of sequenced specimen	Voucher number	Genbank accession	Bioacoustic divergence	Morphological and color divergence
<i>Aglyptodactylus laticeps</i>	<i>Aglyptodactylus laticeps</i>	Kirindy	ZSM 199/2003	AY847959		
<i>Aglyptodactylus madagascariensis</i>	<i>Aglyptodactylus madagascariensis</i>	Montagne d'Ambre	ZSM 203/2004	AY847979		
<i>Aglyptodactylus securifer</i>	<i>Aglyptodactylus securifer</i>	Bemaraha	ZSM 14/2006	FJ559108		
<i>Aglyptodactylus</i> sp. 1	<i>Aglyptodactylus</i> sp. aff. <i>madagascariensis</i> "South"	Andohahela	ZSM 80/2004	AY847978		
<i>Aglyptodactylus</i> sp. 2	<i>Aglyptodactylus</i> sp. aff. <i>madagascariensis</i> "East"	Maroantsetra	MVTIS 2002A70	FJ559109	Not assessed	Morphological differences (smaller size)
<i>Aglyptodactylus</i> sp. 3	<i>Aglyptodactylus</i> sp. aff. <i>madagascariensis</i> "Ranomafana"	Ranomafana	ZMA 20259	AY8487999	Probably slight differences	Slight morphological differences (smaller size) and sympatric occurrence with <i>A. madagascariensis</i> in Ranomafana
<i>Anodonthyla boulengeri</i>	<i>Anodonthyla boulengeri</i>	Foulpointe	ZSM 264/2002	AY594091		
<i>Anodonthyla boulengeri</i>	<i>Anodonthyla boulengeri</i>	Nosy Mangabe	ZCMV 2157	FJ664183		
<i>Anodonthyla boulengeri</i>	<i>Anodonthyla boulengeri</i>	Ranomafana	UADBA (ZCMV 13)	EU341091	No obvious call differences	No obvious morphological differences
<i>Anodonthyla hutchisoni</i>	<i>Anodonthyla hutchisoni</i>	Masoala (Ilampy)	FAZC 10243	FJ559110		
<i>Anodonthyla montana</i>	<i>Anodonthyla montana</i>	Andringitra	UADBA (FGMV 2001.530)	AY594090		
<i>Anodonthyla moramora</i>	<i>Anodonthyla moramora</i>	Ranomafana (Vohiparara)	ZMA 20050	EU341090		
<i>Anodonthyla nigrigularis</i>	<i>Anodonthyla nigrigularis</i>	Andohahela	UADBA 24748	EU341085		
<i>Anodonthyla rouxae</i>	<i>Anodonthyla rouxae</i>	Andohahela	FGZC 2422	EU341086		
<i>Anodonthyla</i> sp. 1	<i>Anodonthyla</i> sp. "Ranomafana"	Ranomafana	ZCMV 214	EU341087	Unique call in the genus	Larger size and color differences
<i>Anodonthyla</i> sp. 2	<i>Anodonthyla</i> sp. "Andohahela"	Andohahela	FGZC 2409	EU341085	Call unknown	Unique combination of small size and distinct though variable color patterns

<i>Anodonthyla</i> sp. 3	<i>Anodonthyla</i> sp. "Ambohitantely"	Ambohitantely	FGZC 2102	EU341092	Call similar to <i>A. nigrigularis</i> but genetically unrelated to that species	Superficially similar to <i>A. nigrigularis</i>
<i>Anodonthyla</i> sp. 4	Not included	Ranomafana	ZCMV 204	FJ559111		
<i>Anodonthyla</i> sp. 5	<i>Anodonthyla boulengeri</i>	Andasibe	ZCMV 2207	FJ559112	Call similar to <i>A. boulengeri</i>	Distinctly smaller size
<i>Anodonthyla</i> sp. 6	Not included	Manombo	ZCMV 5454	FJ559113	Call similar to <i>A. nigrigularis</i> but genetically unrelated to that species	Not assessed
<i>Blommersia blommersae</i>	<i>Blommersia blommersae</i>	Andasibe	UADBA (FGMV 2000.65)	DQ235418		
<i>Blommersia blommersae</i>	<i>Blommersia blommersae</i>	Ranomafana	UADBA 21132	AY848047		
<i>Blommersia blommersae</i>	<i>Blommersia blommersae</i>	Ste Luce	---	FJ559114		
<i>Blommersia domerguei</i>	<i>Blommersia domerguei</i>	Ranomafana (Ambatovory)	ZMA 20056	AY848071		
<i>Blommersia grandisonae</i>	<i>Blommersia grandisonae</i>	Ambato	ZFMK 66669	FJ559115		
<i>Blommersia kely</i>	<i>Blommersia kely</i>	Antoetra	ZMA 19551	AY848078		
<i>Blommersia sarotra</i>	<i>Blommersia sarotra</i>	Mandraka	ZSM 354/2000	AF317687		
<i>Blommersia</i> sp. 1	<i>Blommersia</i> sp. aff. <i>blommersae</i> "Nosy Boraha"	Nosy Boraha	ZCMV 3232	FJ559116	Unique call in the genus	Slight differences in webbing
<i>Blommersia</i> sp. 2	<i>Blommersia</i> sp. aff. <i>blommersae</i> "Maroantsetra"	Maroantsetra	MVTIS 2002A10	AY848104	Quantitative call differences to other species	Slight differences in webbing
<i>Blommersia</i> sp. 3	<i>Blommersia</i> sp. aff. <i>blommersae</i> "Toamasina"	Toamasina	ZCMV 3233	FJ559117	Quantitative call differences to other species	Unique morphology of femoral glands
<i>Blommersia</i> sp. 4	Not included	Mayotte (Comoro Islands)	ZSM 652/2000	AY341639	Qualitative call differences to other species	Unique morphology in the genus
<i>Blommersia</i> sp. 5	<i>Blommersia</i> sp. aff. <i>wittei</i> "Isalo"	Ranohira	ZSM 22/2004	AY848031	Call similar to some populations of <i>B. wittei</i> but slight quantitative differences to geographically closest ones	Not assessed, but apparently smaller average body size than <i>B. wittei</i>
<i>Blommersia</i> sp. 6	Not included	Genbank sequence	UMMZ 212950	AY454384	Unknown	Unknown

<i>Blommersia</i> sp. 7	Not included	Betampona	MVTIS AC805 / FAZC 13613	FJ559118	Unknown	Strong differences in color, extreme differences in reproductive biology Unique morphology and color Intermediate between <i>B. sarotra</i> and <i>B. kely</i> Unknown Color pattern different from <i>B. grandisonae</i> which in turn is uniform throughout Madagascar
<i>Blommersia</i> sp. 8	<i>Blommersia</i> sp. aff. <i>grandisonae</i> "Marolambo"	Marolambo	ZSM 54/2002	AY848098	Unknown	
<i>Blommersia</i> sp. 9	<i>Blommersia</i> sp. aff. <i>sarotra</i> "Ranomafana"	Ranomafana (Vohiparara)	MVTIS 2002A7	AY848023	Similar to <i>B. sarotra</i>	
<i>Blommersia</i> sp. 10	Not included	Sahavontsira	MVTIS AC506 / FAZC 5672	FJ559119	Unknown	
<i>Blommersia</i> sp. 11	<i>Blommersia</i> sp. aff. <i>grandisonae</i>	Manombo	ZCMV 5432	FJ559120	Similar to <i>B. grandisonae</i>	
<i>Blommersia wittei</i>	<i>Blommersia wittei</i>	Montagne d'Ambre	ZSM 879/2003	AY848105		
<i>Boehmantis microtympanum</i>	<i>Boehmantis microtympanum</i>	Andohahela	ZSM 79/2004	AY848203		
<i>Boophis albilabris</i>	<i>Boophis albilabris</i>	Manongarivo	UADBA (FGMV 2002.807)	AY848556		
<i>Boophis albipunctatus</i>	<i>Boophis albipunctatus</i>	Manantantely	ZSM 157/2004	AY848446		
<i>Boophis andohahela</i>	<i>Boophis andohahela</i>	Andohahela	FGZC 2372	FJ559121		
<i>Boophis andreonei</i>	<i>Boophis andreonei</i>	Manongarivo	ZMA (FGMV 2002.806)	AY848449		
<i>Boophis anjanaharibeensis</i>	<i>Boophis anjanaharibeensis</i>	Marojejy	FGZC 2762	FJ559122		
<i>Boophis ankaratra</i>	<i>Boophis ankaratra</i>	Manjakatomp	ZSM 367/2000	AJ315911		
<i>Boophis axelmeyeri</i>	<i>Boophis axelmeyeri</i>	Manongarivo	UADBA (FGMV 2002.809)	DQ118668		
<i>Boophis baetkei</i>	<i>Boophis</i> sp. aff. <i>rappiodes</i>	Forêt d'Ambre	ZSM (FGZC 1391)	EU314954		
<i>Boophis blommersae</i>	<i>Boophis blommersae</i>	Montagne d'Ambre	ZSM 906/2003	AY883982		
<i>Boophis blommersae</i>	<i>Boophis blommersae</i>	Manarikoba (Tsaratanana)	ZSM 617/2001	AY883981	No obvious call differences	No obvious morphological differences
<i>Boophis boehmei</i>	<i>Boophis boehmei</i>	Andasibe	UADBA (FGMV 2001.1205)	AY848559		
<i>Boophis bottae</i>	<i>Boophis bottae</i>	Andasibe	ZSM 344/2000	AJ314817		
<i>Boophis bottae</i>	<i>Boophis bottae</i>	Ranomafana	UADBA 24332	AY848626		

<i>Boophis brachychir</i>	<i>Boophis</i> sp. aff. <i>brachychir</i>	Manongarivo	UADBA (FGMV 2002.702)	AY848538		
<i>Boophis burgeri</i>	<i>Boophis burgeri</i>	Andasibe	UADBA (FGMV 2001.1246)	AY848566		
<i>Boophis doulioti</i>	<i>Boophis doulioti</i>	Bemaraha	ZSM 29/2006	FJ559123		
<i>Boophis elenae</i>	<i>Boophis elenae</i>	Ranomafana (Maharira)	UADBA 24141	AY848470		
<i>Boophis englaenderi</i>	<i>Boophis englaenderi</i>	Marojejy	ZCMV 856	FJ559124		
<i>Boophis erythrodactylus</i>	<i>Boophis erythrodactylus</i>	Mandraka	ZSM 344/2000	AJ314814		
<i>Boophis feonnyala</i>	<i>Boophis feonnyala</i>	Andasibe	ZSM 313/2000	AJ315922		
<i>Boophis goudotii</i>	<i>Boophis goudotii</i>	Antoetra	ZMA 19544	AY848570		
<i>Boophis guibei</i>	<i>Boophis guibei</i>	Andasibe	ZSM 348/2000	DQ116467		
<i>Boophis haematopus</i>	<i>Boophis haematopus</i>	Andohahela	ZSM 120/2004	AY848633		
<i>Boophis idae</i>	<i>Boophis idae</i>	Andasibe	ZSM 45/2002	AY848481		
<i>Boophis jaegeri</i>	<i>Boophis jaegeri</i>	Nosy Be	ZSM 587/2001	FJ559125		
<i>Boophis laurenti</i>	<i>Boophis laurenti</i>	Andringitra	ZSM 727/2001	AY848575		
<i>Boophis liami</i>	<i>Boophis liami</i>	Vohidrazana	ZSM 310/2000	AJ315921		
<i>Boophis lichenoides</i>	<i>Boophis lichenoides</i>	Sahavontsira	FAZC 5679	FJ664184		
<i>Boophis lilianae</i>	<i>Boophis</i> sp. aff. <i>rappiodes</i> "South"	Ifanadiana	ZCMV 2864	EU314953		
<i>Boophis luteus</i>	<i>Boophis luteus</i>	Andasibe	UADBA (FGMV 2000.063)	AJ315916		
<i>Boophis luteus</i>	<i>Boophis luteus</i>	Andohahela	ZSM 128/2004	AY848485	Possible qualitative call differences	No morphological differences
<i>Boophis madagascariensis</i>	<i>Boophis madagascariensis</i>	Ranomafana	ZMA (ZCMV 344)	AY848585		
<i>Boophis majori</i>	<i>Boophis majori</i>	Ranomafana (Maharira)	ZMA 20068	AY848586		
<i>Boophis mandraka</i>	<i>Boophis mandraka</i>	Mandraka	ZSM 346/2000	AJ315921		
<i>Boophis mandraka</i>	<i>Boophis</i> sp. aff. <i>mandraka</i> "Ranomafana"	Ambatolahy	ZCMV 5332	FJ559126		
<i>Boophis marojezensis</i>	<i>Boophis marojezensis</i>	Marojejy	FGZC 2857	FJ559127		
<i>Boophis marojezensis</i>	<i>Boophis marojezensis</i>	Vohidrazana	ZSM 326/2000	FJ559128	No obvious call differences	No morphological differences
<i>Boophis microtympanum</i>	<i>Boophis microtympanum</i>	Ambohitantely	FGZC 2200	FJ559129		
<i>Boophis miniatus</i>	<i>Boophis miniatus</i>	Manantantely	ZSM 142/2004	AY848639		

<i>Boophis occidentalis</i>	<i>Boophis occidentalis</i>	Near Antoetra? - unconfirmed locality	ZSM 44/2002	AY341677		
<i>Boophis opisthodon</i>	<i>Boophis opisthodon</i>	Cap Est	ZFMK 70480	AF215331		
<i>Boophis opisthodon</i>	<i>Boophis opisthodon</i>	Manombo	ZMA 20138	AY848491	No call differences	No morphological differences
<i>Boophis pauliani</i>	<i>Boophis pauliani</i>	Andasibe	ZSM 345/2000	AJ315924		
<i>Boophis pauliani</i>	<i>Boophis pauliani</i>	Ranomafana	ZMA 20062	AY848458	Unknown	No obvious morphological differences
<i>Boophis pauliani</i>	<i>Boophis pauliani</i>	Tolagnaro	ZSM 159/2002	AY848493	Unknown	No obvious morphological differences
<i>Boophis periegetes</i>	<i>Boophis periegetes</i>	Andohahela	FGZC 2430	FJ559130		
<i>Boophis picturatus</i>	<i>Boophis picturatus</i>	An'Ala	ZCMV 1457	FJ559131		
<i>Boophis picturatus</i>	<i>Boophis picturatus</i>	Ranomafana (Maharira)	UADBA 24282	AY848644	No call differences	Only slight chromatic differences
<i>Boophis pyrrhus</i>	<i>Boophis pyrrhus</i>	Ifanadiana	UADBA 24315	AY848645		
<i>Boophis pyrrhus</i>	<i>Boophis pyrrhus</i>	Sahavontsira	MVTIS AC462 5598	FJ559132	Unknown	Not assessed in detail, but no obvious differences noted
<i>Boophis rappiodes</i>	<i>Boophis rappiodes</i>	Andasibe	UADBA 2000.59	AJ314816		
<i>Boophis rappiodes</i>	<i>Boophis rappiodes</i>	Ranomafana	ZSM 752/2003	AY848669	No call differences	No morphological differences
<i>Boophis reticulatus</i>	<i>Boophis reticulatus</i>	Maharira	ZMA (ZCMV 211)	AY848613		
<i>Boophis reticulatus</i>	<i>Boophis reticulatus</i>	Vohidrazana	FGMV 2002.3045	AY848612	No obvious call differences	No obvious morphological differences
<i>Boophis rhodoscelis</i>	<i>Boophis rhodoscelis</i>	Ranomafana	ZMA (ZCMV 316)	AY848620		
<i>Boophis rufiocularis</i>	<i>Boophis rufiocularis</i>	An'Ala	2002.GA272	AY848623		
<i>Boophis sambirano</i>	<i>Boophis sambirano</i>	Manongarivo	ZSM 810/2003	AY848544		
<i>Boophis schuboeae</i>	<i>Boophis schuboeae</i>	Ranomafana	ZFMK 62907	AJ315912		
<i>Boophis septentrionalis</i>	<i>Boophis septentrionalis</i>	Montagne d'Ambre	ZSM 900/2003	AY848505		
<i>Boophis sibilans</i>	<i>Boophis sibilans</i>	Andasibe	ZSM 39/2002	DQ235435		
<i>Boophis solomaso</i>	<i>Boophis solomaso</i>	Ambavaniasy	NMBE 1046008	AJ315920		

<i>Boophis</i> sp. 1	Not included	Mayotte (Comoro Islands)	ZSM 658/2000	FJ559133	Not assessed	Chromatic differences (iris color) and larger body size
<i>Boophis</i> sp. 2	<i>Boophis</i> sp. "calcaratus"	Ambavaniasy	NMBE 862/95	FJ559134	Unknown	Unique morphology
<i>Boophis</i> sp. 4	<i>Boophis</i> sp. aff. <i>occidentalis</i>	Berara	MRSN A2000	AJ314820	Qualitative differences	Constant chromatic differences
<i>Boophis</i> sp. 5	<i>Boophis</i> sp. aff. <i>albilabris</i> "red eyes"	Veveembe	ZMA 20131	AY848528	Unknown	Chromatic differences, elevational separation
<i>Boophis</i> sp. 6	<i>Boophis</i> sp. aff. <i>albilabris</i> "reticulated lip"	Masoala	FAZC 2030	FJ559135	Unknown	Distinct chromatic and size differences
<i>Boophis</i> sp. 7	Not included	Marojejy	FGZC 2280	FJ559136	Unknown	Unknown
<i>Boophis</i> sp. 8	<i>Boophis</i> sp. aff. <i>rufioculis</i>	Ranomafana (Maharira)	ZMA 20193	AY848535	Uassessed	Slight qualitative differences
<i>Boophis</i> sp. 10	Not included	Ambolokopatrika	FAZC 7331	FJ559137	Unknown	Unknown
<i>Boophis</i> sp. 11	<i>Boophis brachychir</i>	Montagne d'Ambre	ZSM 899/2003	AY848563	Strong qualitative differences	Distinct differences
<i>Boophis</i> sp. 12	<i>Boophis</i> sp. aff. <i>madagascariensis</i> "North"	Montagne d'Ambre	ZSM 898/2003	AY848577	Unknown	Chromatic differences
<i>Boophis</i> sp. 13	<i>Boophis</i> sp. aff. <i>goudoti</i>	Ranomafana (Ranomafanakely)	ZMA 20219	AY848606	Quantitative differences	Differences in color and skin texture
<i>Boophis</i> sp. 14	<i>Boophis</i> sp.	Ambohitantely	FGZC 2204	FJ559138	Unknown	Unknown
<i>Boophis</i> sp. 15	<i>Boophis</i> sp.	Ranomafana (Ambatolahy)	ZSM (ZCMV 691)	AY848539	Unknown	Unique morphology
<i>Boophis</i> sp. 16	<i>Boophis</i> sp. aff. <i>boehmei</i>	Ranomafana	ZCMV 3045	FJ559139	No obvious differences	Slight but constant differences - CCS because of very strong and constant genetic differentiation
<i>Boophis</i> sp. 17	<i>Boophis</i> sp. aff. <i>sibilans</i>	Ranomafana (Ambatolahy)	ZMA 20306	AY848443	Only quantitative call differences to <i>B. sibilans</i>	No differences in morphology; CCS because of sympatric occurrence and constant call differences
<i>Boophis</i> sp. 18	<i>Boophis</i> sp. aff. <i>ankaratra</i> "Antoetra slow"	Antoetra region	FAZC 11454	FJ559140	Strong quantitative call differences; sympatric with <i>B. ankaratra</i>	Unknown

<i>Boophis</i> sp. 19	<i>Boophis</i> sp. aff. <i>ankaratra</i> "Andohahela slow"	Andohahela	FGZC 2389	FJ559141	Quantitative call differences to <i>B. ankaratra</i> ; likely geographically isolated	No differences
<i>Boophis</i> sp. 20	<i>Boophis</i> sp. aff. <i>ankaratra</i> "Andohahela fast"	Andohahela	FGZC 2390	FJ559142	Quantitative call differences to <i>B. schuboeae</i> ; likely geographically isolated	No differences
<i>Boophis</i> sp. 21	Not included	Ambohitantely	FGZC 2201	FJ559143	Unknown	Unknown
<i>Boophis</i> sp. 22	<i>Boophis</i> sp. aff. <i>elenae</i>	Ranomafana	ZMA 20133	AY848442	Qualitative call differences	Chromatic differences and smaller body size
<i>Boophis</i> sp. 23	Not included	Marojejy	FGZC 2243	FJ559144	Unknown	Unknown
<i>Boophis</i> sp. 24	Not included	Sahavontsira	MVTIS AC460 / FAZC 5591	FJ559145	Unknown	Unknown
<i>Boophis</i> sp. 25	Not included	Marojejy	FGZC 2929	FJ559146	Unknown	Unknown
<i>Boophis</i> sp. 26	Not included	Marojejy	FGZC 2953	FJ559147	Unknown	Unknown
<i>Boophis</i> sp. 27	<i>Boophis</i> sp. aff. <i>mandraka</i> "North"	Masoala	FAZC 7805	FJ559148	Unknown	Unknown
<i>Boophis</i> sp. 28	<i>Boophis</i> sp. aff. <i>mandraka</i> "North"	Marojejy	ZCMV 2062	FJ559149		
<i>Boophis</i> sp. 29	<i>Boophis</i> sp. aff. <i>miniatus</i> "Mahakajy"	Mahakajy	UADBA 24299	AY848632	Unknown	Probable morphological differences
<i>Boophis</i> sp. 30	<i>Boophis</i> sp. aff. <i>rhodoscelis</i> "Ranomafana"	Ranomafana	ZCMV 320	AY848627	Qualitative differences	Slight but constant differences to all related species
<i>Boophis</i> sp. 33	<i>Boophis</i> sp. aff. <i>microtypanum</i>	Andringitra	ZSM 731/2001	AY848597	Possible quantitative differences	Sympatric occurrence with <i>B. microtypanum</i> at Andringitra
<i>Boophis</i> sp. 34	<i>Boophis</i> sp. aff. <i>rhodoscelis</i> "Ambohitantely"	Ambohitantely	FGZC 2139	FJ559150	Distinct quantitative differences	No clear differences
<i>Boophis</i> sp. 35	<i>Boophis</i> sp. aff. <i>majori</i> "Ranomafana"	Ranomafana	ZCMV 2976	FJ559151	Qualitative differences; sympatric occurrence with <i>B. majori</i>	No differences in adult morphology, clear differences in tadpole morphology
<i>Boophis</i> sp. 36	<i>Boophis</i> sp. aff. <i>elenae</i>	Andasibe	MVTIS LR294	DQ792467	Not assessed	Incompletely known
<i>Boophis</i> sp. 37	<i>Boophis</i> sp. aff. <i>elenae</i>	Ranomafana	MVTIS HG3 HP1	FJ559152	Unknown	Unknown

<i>Boophis</i> sp. 38	Not included	Ranomafana	ZCMV 4261	FJ559153	Unknown	Unknown
<i>Boophis</i> sp. 39	Not included	Betampona	FAZC 13965	FJ559154	Unknown	Unknown
<i>Boophis</i> sp. 40	Not included	Mahasoa forest	DRV 5635	FJ559155	Unknown	Not assessed
<i>Boophis</i> sp. 41	Not included	Mahasoa forest	DRV 5665	FJ559156	Unknown	Not assessed
<i>Boophis</i> sp. 42	Not included	Ranomafana	MVTIS HG4-HP1	FJ559157	Unknown	Unknown
<i>Boophis tampoka</i>	<i>Boophis</i> sp. "tampoka"	Bemaraha	ZSM 96/2006	AY848670		
<i>Boophis tasymena</i>	<i>Boophis tasymena</i>	Ranomafana (Maharira)	ZMA 20241	AY848670		
<i>Boophis tephraeomystax</i>	<i>Boophis tephraeomystax</i>	Montagne d'Ambre	UADBA 24183	AY848508		
<i>Boophis ulftunni</i>	<i>Boophis</i> sp. aff. <i>rappiodes</i> "North"	Marojejy	ZSM 80/2005	EU252142	No qualitative differences	No obvious differences
<i>Boophis ulftunni</i>	<i>Boophis</i> sp. aff. <i>rappiodes</i> "North"	Ilampy (Masoala)	FAZC 10396	EU252143		
<i>Boophis viridis</i>	<i>Boophis viridis</i>	Manombo	UADBA 24363	AY848679		
<i>Boophis vittatus</i>	<i>Boophis vittatus</i>	Marojejy	ZCMV 842	FJ559158		
<i>Boophis vittatus</i>	<i>Boophis vittatus</i>	Manongarivo	UADBA (FGMV 2002-740)	AY848524	No differences	No differences
<i>Boophis williamsi</i>	<i>Boophis williamsi</i>	Ankaratra	ZSM 734/2001	AY848624		
<i>Boophis xerophilus</i>	<i>Boophis xerophilus</i>	Kirindy	ZFMK 66705	AF215335		
<i>Cophyla berara</i>	<i>Cophyla berara</i>	Berara	ZSM 410/2000	EU34111		
<i>Cophyla occultans</i>	<i>Cophyla occultans</i>	Marojejy	MRSN A2660	AY5994100		
<i>Cophyla phyllodactyla</i>	<i>Cophyla phyllodactyla</i>	Nosy Be	ZSM 460/2000	AY730867		
<i>Cophyla</i> sp. 1	Not included	Montagne d'Ambre	FGZC 1866	FJ559159	Not assessed	Not assessed; CCS status because it forms sister species to <i>C. phyllodactyla</i> / <i>C. berara</i> clade
<i>Dyscophus antongilii</i>	<i>Dyscophus antongilii</i>	Maroantsetra	MVTIS YCHIA5	AY834196		
<i>Dyscophus guineti</i>	<i>Dyscophus guineti</i>	Fierenana	MVTIS YCHIA21	AY834197		
<i>Dyscophus insularis</i>	<i>Dyscophus insularis</i>	Antsirasira	UADBA (FGMV 2001.38)	AY834198		
<i>Gephyromantis ambohitra</i>	<i>Gephyromantis ambohitra</i>	Montagne d'Ambre	ZSM 204/2004	AY848309		
<i>Gephyromantis ambohitra</i>	<i>Gephyromantis ambohitra</i>	Manongarivo	ZSM 850/2003	AY848311	Only quantitative differences	No obvious differences

<i>Gephyromantis asper</i>	<i>Gephyromantis asper</i>	Ranomafana	ZMA 20248	AY848323		
<i>Gephyromantis azzurrae</i>	<i>Gephyromantis azzurrae</i>	Isalo	MRSN A5311	EF222302		
<i>Gephyromantis blanci</i>	<i>Gephyromantis blanci</i>	Andringitra	UADBA 20819	AY848324		
<i>Gephyromantis boulengeri</i>	<i>Gephyromantis boulengeri</i>	Nosy Mangabe	ZCMV 2121	DQ901391		
<i>Gephyromantis boulengeri</i>	<i>Gephyromantis boulengeri</i>	Ambohitsara	ZCMV 5879	FJ559162	Quantitative differences	No obvious differences
<i>Gephyromantis boulengeri</i>	<i>Gephyromantis boulengeri</i>	Ranomafana	---	FJ559161	Quantitative differences	No obvious differences
<i>Gephyromantis boulengeri</i>	Not included	Masoala	FAZC 7230	FJ559163		
<i>Gephyromantis cornutus</i>	<i>Gephyromantis cornutus</i>	Vohidrazana	ZSM 164/2002	FJ559164		
<i>Gephyromantis corvus</i>	<i>Gephyromantis corvus</i>	Isalo	ZFMK 70494	AF215320		
<i>Gephyromantis decaryi</i>	<i>Gephyromantis decaryi</i>	Vondrozo	ZMA 20097	AY848306		
<i>Gephyromantis eiselti</i>	<i>Gephyromantis eiselti</i>	Ambavaniasy	ZSM uncatalogued	FJ559165		
<i>Gephyromantis enki</i>	<i>Gephyromantis enki</i>	Ranomafana	UADBA (ZCMV 34)	AY848409		
<i>Gephyromantis granulatus</i>	<i>Gephyromantis granulatus</i>	Nosy Be	not preserved	AJ315927		
<i>Gephyromantis granulatus</i>	<i>Gephyromantis granulatus</i>	Marojejy	FGZC 2735	FJ559166	No differences	No differences
<i>Gephyromantis horridus</i>	<i>Gephyromantis horridus</i>	Tsaratanana	UADBA 10002	FJ559167		
<i>Gephyromantis klemmeri</i>	<i>Gephyromantis klemmeri</i>	Marojejy	FGZC 2727	FJ559168		
<i>Gephyromantis leucocephalus</i>	<i>Gephyromantis leucocephalus</i>	Nahampoana	ZSM 160/2002	FJ559169		
<i>Gephyromantis leucocephalus</i>	<i>Gephyromantis leucocephalus</i>	Manombo	ZCMV 5440	FJ559170	Possible quantitative differences	No obvious differences
<i>Gephyromantis leucocephalus</i>	<i>Gephyromantis leucocephalus</i>	Ste. Luce	---	FJ559171		
<i>Gephyromantis leucomaculatus</i>	<i>Gephyromantis leucomaculatus</i>	Nosy Mangabe	ZSM (ZCMV 882)	FJ559172		
<i>Gephyromantis luteus</i>	<i>Gephyromantis luteus</i>	Marojejy	ZCMV 2081	FJ559173		
<i>Gephyromantis malagasius</i>	<i>Gephyromantis malagasius</i>	Ambohitsara	ZMA 20247	AY848353		
<i>Gephyromantis moseri</i>	<i>Gephyromantis moseri</i>	Andasibe	ZSM 93/2002	FJ559174		
<i>Gephyromantis plicifer</i>	<i>Gephyromantis plicifer</i>	Andohahela	ZSM 98/2004	AY848419		
<i>Gephyromantis pseudoasper</i>	<i>Gephyromantis pseudoasper</i>	Manongarivo	MVTIS 2000D61	AY848421		
<i>Gephyromantis redimitus</i>	<i>Gephyromantis redimitus</i>	Nosy Mangabe	ZCMV 2150	FJ559175		

<i>Gephyromantis redimitus</i>	<i>Gephyromantis redimitus</i>	Ranomafana	ZSM 743/2003	AY848359	No differences	No differences
<i>Gephyromantis redimitus</i>	<i>Gephyromantis redimitus</i>	Vohidrazana	ZSM 152/2002	AY848363	No differences	No differences
<i>Gephyromantis redimitus</i>	<i>Gephyromantis redimitus</i>	Betampona	FAZC 13970	FJ559176	No differences	No differences
<i>Gephyromantis rivicola</i>	<i>Gephyromantis rivicola</i>	Andranofotsy	ZSM 180/2002	DQ235449		
<i>Gephyromantis runewsweeki</i>	<i>Gephyromantis runewsweeki</i>	Ranomafana (Maharira)	MNCN 42085	AY848308		
<i>Gephyromantis salegy</i>	<i>Gephyromantis salegy</i>	Ambolokopatrika	MRSN A2046	AY848365		
<i>Gephyromantis schilfi</i>	<i>Gephyromantis schilfi</i>	Marojejy	FGZC 2735	FJ559177		
<i>Gephyromantis sculpturatus</i>	<i>Gephyromantis sculpturatus</i>	Veembe	UADBA 24199	FJ559178		
<i>Gephyromantis silvanus</i>	<i>Gephyromantis silvanus</i>	Nosy Mangabe	ZCMV 888	FJ559179		
<i>Gephyromantis silvanus</i>	<i>Gephyromantis silvanus</i>	Andranofotsy	ZSM 178/2002	AY848366	Not assessed (call from type locality unknown)	No obvious differences
<i>Gephyromantis</i> sp. 1	<i>Gephyromantis</i> sp. aff. <i>ambohitra</i> "Marojejy"	Marojejy	ZCMV 2016	FJ559180	Qualitative differences	Not assessed
<i>Gephyromantis</i> sp. 4	<i>Gephyromantis blanci</i>	Ranomafana (Ranomafanakely)	ZCMV 5240	FJ559181	Quantitative differences	Not assessed
<i>Gephyromantis</i> sp. 5	<i>Gephyromantis</i> sp. aff. <i>blanci</i> "Andohahela"	Andohahela	FGZC 2459	FJ559182	No assessed	Constant morphological differences (long hindlimbs)
<i>Gephyromantis</i> sp. 6	<i>Gephyromantis</i> sp. aff. <i>blanci</i>	near Farafangana	ZCMV 5493	FJ559183	Qualitative differences	Not assessed
<i>Gephyromantis</i> sp. 7	Not included	Manakara	ZCMV 5421	FJ559184	Distinct quantitative differences	Not assessed
<i>Gephyromantis</i> sp. 8	Not included	Ambohitsara	ZCMV 5229	FJ559185	Possibly quantitative differences	Distinct color and morphological differences
<i>Gephyromantis</i> sp. 9	<i>Gephyromantis decaryi</i>	Ranomafana	ZCMV 5223	FJ559186	Possibly quantitative differences	Distinct morphological differences
<i>Gephyromantis</i> sp. 10	<i>Gephyromantis</i> sp. aff. <i>corvus</i> "Bemaraha"	Bemaraha	ZSM 23/2006	FJ559187	Unknown	Not assessed; CCS status due to very deep genetic divergences and geographic isolation
<i>Gephyromantis</i> sp. 11	<i>Gephyromantis</i> sp. aff. <i>horridus</i> "Marojejy"	Marojejy	FGZC 2843	FJ559188	Unknown	Distinct differences in color and morphology
<i>Gephyromantis</i> sp. 12	not included	Genbank sequence	UMMZ 201404	AY454385	Unknown	Unknown

<i>Gephyromantis</i> sp. 13	<i>Gephyromantis</i> sp. aff. <i>malagasius</i> "Andasibe"	Ranomafana	ZMA 19421	EF100471	Possibly quantitative differences	Morphological differences (presence of tibial glands)
<i>Gephyromantis</i> sp. 14	<i>Gephyromantis malagasius</i>	Masoala	FAZC	AJ314797	Unknown	Unknown
<i>Gephyromantis</i> sp. 15	Not included	Andranobe (Masoala)	FAZC 7266	AY848367	Unknown	Unknown
<i>Gephyromantis</i> sp. 16	Not included	Masoala	FAZC 7904	FJ559190	Unknown	Unknown
<i>Gephyromantis</i> sp. 17	<i>Gephyromantis</i> sp. aff. <i>leucomaculatus</i> "Marojejy"	Marojejy	ZCMV 2086	FJ559191	Possibly quantitative differences	Differences in color and possibly a less broad head
<i>Gephyromantis</i> sp. 18	Not included	Ambolokopatrika	FAZC 7009	AY848414	Unknown	Unknown
<i>Gephyromantis</i> sp. 19	Not included	Ambolokopatrika	FAZC 6829	AY848404	Unknown	Unknown
<i>Gephyromantis</i> sp. 20	Not included	Sahavontsira	MVTIS AC530 / FAZC 5674	FJ559192	Unknown	Unknown
<i>Gephyromantis</i> sp. 21	<i>Gephyromantis plicifer</i>	Antoetra	FAZC 11464	AY848380	No obvious differences to <i>G. plicifer</i>	Not assessed
<i>Gephyromantis</i> sp. 22	Not included	Mahasoa forest	ZCMV 8099	FJ559193	Qualitative call differences	Larger body size
<i>Gephyromantis</i> sp. 23	Not included	Betampona	FAZC 13778	FJ559194	Unknown	Unknown
<i>Gephyromantis</i> sp. 24	Not included	Torotorofotsy	ZCMV 8103	FJ559195	Quantitative differences	Smaller body size
<i>Gephyromantis</i> sp. 25	Not included	Mahasoa forest	ZCMV 8089	FJ559196	Qualitative call differences	Not assessed
<i>Gephyromantis</i> sp. 26	Not included	Mahasoa forest	ZCMV 8100	FJ559197	Qualitative call differences	Not assessed
<i>Gephyromantis</i> sp. 27	<i>Gephyromantis asper</i>	Mandraka	MVTIS E52-41	FJ559160	Qualitative differences	Not assessed
<i>Gephyromantis spinifer</i>	<i>Gephyromantis spinifer</i>	Midongy du Sud	UADBA 25495	FJ559198		
<i>Gephyromantis striatus</i>	<i>Gephyromantis striatus</i>	Marojejy	FGZC 2774	AY341650		
<i>Gephyromantis tandroka</i>	<i>Gephyromantis tandroka</i>	Marojejy	FGZC 2816	FJ559199		
<i>Gephyromantis thelenae</i>	<i>Gephyromantis thelenae</i>	Mantadia	UADBA (FGMV 2001.1014)	AY848331		
<i>Gephyromantis tschenki</i>	<i>Gephyromantis tschenki</i>	Ranomafana	ZSM 651/2003 / ZMA 19392	AY848377		
<i>Gephyromantis ventrimaculatus</i>	<i>Gephyromantis ventrimaculatus</i>	Ranomafana (Ranomafanakely)	ZCMV 3362	FJ559200		
<i>Gephyromantis webbi</i>	<i>Gephyromantis webbi</i>	Nosy Mangabe	ZCMV 872	FJ559201		

<i>Gephyromantis zavona</i>	<i>Gephyromantis zavona</i>	Tsaratanana	ZSM 627/2001	AJ314795		
<i>Guibemantis albolineatus</i>	<i>Guibemantis albolineatus</i>	Andohahela	FGZC 2432	FJ559202		
<i>Guibemantis bicalcaratus</i>	<i>Guibemantis bicalcaratus</i>	Nosy Boraha	ZCMV 3244	FJ559203		
<i>Guibemantis depressiceps</i>	<i>Guibemantis depressiceps</i>	Ranomafana (Vohiparara)	ZMA 20238	AY848066		
<i>Guibemantis flavobrunneus</i>	<i>Guibemantis flavobrunneus</i>	Mangoro river region	FGZC 2655	EF472510		
<i>Guibemantis kathrinae</i>	<i>Guibemantis kathrinae</i>	An'Ala	MVTIS GA2002	AY684189		
<i>Guibemantis liber</i>	<i>Guibemantis liber</i>	Mandraka	UADBA 20601	AY848084		
<i>Guibemantis liber</i>	<i>Guibemantis liber</i>	Montagne d'Ambre	ZMA 19644	EF472528	Quantitative call differences	No differences
<i>Guibemantis liber</i>	<i>Guibemantis liber</i>	Ranomafana	UADBA 20601	DQ235422	No obvious call differences	No differences
<i>Guibemantis liber</i>	<i>Guibemantis liber</i>	Ambatodisakoana	ZCMV 8087	FJ559204	No obvious call differences	No differences; phylogeographic signal of admixture
<i>Guibemantis pulcher</i>	<i>Guibemantis pulcher</i>	Ranomafana	ZMA 20242	AY848096		
<i>Guibemantis punctatus</i>	<i>Guibemantis punctatus</i>	Ambohitantely	ZCMV 5501	FJ559205		
<i>Guibemantis</i> sp. 1	Not included	Ankavanana	UMMZ 213093	FJ559206	Unknown	Unknown
<i>Guibemantis</i> sp. 2	Not included	Marojejy	UMMZ 231070	EF472517	Unknown	Unknown
<i>Guibemantis</i> sp. 3	<i>Guibemantis</i> sp. aff. <i>albolineatus</i> "Andasibe"	Andasibe	ZSM 250/2002	AY454376	Unknown	Color differences
<i>Guibemantis</i> sp. 5	<i>Guibemantis</i> sp. aff. <i>liber</i> "South"	Vevembe	ZMA 20115	FJ559207	Qualitative call differences to <i>G. liber</i>	Distinct morphological difference
<i>Guibemantis</i> sp. 6	<i>Guibemantis</i> sp. aff. <i>punctatus</i>	Ste. Luce	RML 290	EF472520	Unknown	Color differences
<i>Guibemantis</i> sp. 7	<i>Guibemantis</i> sp. aff. <i>bicalcaratus</i> "South"	Ste Luce	FGZC 2588	EF472508	Unknown	Possible color differences
<i>Guibemantis</i> sp. 8	<i>Guibemantis</i> sp. aff. <i>bicalcaratus</i> "Moramanga"	Besariaka	UADBA (ZCMV 466)	AY848035	Call of typical <i>G. bicalcaratus</i> not known for comparison	No obvious differences
<i>Guibemantis</i> sp. 9	Not included	Nosy Boraha	ZCMV 3240	FJ559208	Unknown	Distinct color differences to <i>G. bicalcaratus</i> ; CCS because of syntopy with <i>G. bicalcaratus</i>
<i>Guibemantis</i> sp. 10	<i>Guibemantis</i> sp. aff. <i>flavobrunneus</i> "Ranomafana"	Manombo	ZMA 20119	AY848076	Unknown	Distinct color differences

<i>Guibemantis</i> sp. 11	Not included	Ste. Luce	RML 262 or RML 132	EF472518	Unknown	Unknown
<i>Guibemantis</i> sp. 12	<i>Guibemantis</i> sp. aff. <i>bicalcaratus</i> "Manongarivo"	Manongarivo	ZMA 19582	FJ559209	Unknown	Not assessed
<i>Guibemantis</i> sp. 13	Not included	Andringitra	UMMZ 212929	EF472511	Unknown	Not assessed
<i>Guibemantis</i> sp. 14	<i>Guibemantis</i> sp. aff. <i>punctatus</i> "Fierenana"	Fierenana	ZMA 19347	FJ559210	Unknown	Distinct color differences
<i>Guibemantis</i> sp. 15	Not included	Marojejy	ZCMV 2044	EF472505	Unknown	Not assessed
<i>Guibemantis</i> sp. 16	Not included	Cap Est	UMMZ 212922	EF472512	Unknown	Unknown
<i>Guibemantis</i> sp. 17	Not included	Marojejy	ZCMV 2011	FJ559211	Unknown	Not assessed
<i>Guibemantis</i> sp. 18	Not included	Masoala (Ilampy)	FAZC 10334	AY848063	Unknown	Unknown
<i>Guibemantis</i> sp. 19	<i>Guibemantis</i> sp. aff. <i>depressiceps</i> "Andohahela"	Andohahela	FGZC 2434	EF488668	Unknown	Differences in body size, color, and possibly ecology
<i>Guibemantis</i> sp. 20	<i>Guibemantis</i> sp. aff. <i>timidus</i>	Manombo	ZCMV 5496	FJ559212	Qualitative call differences	Distinct morphological differences
<i>Guibemantis timidus</i>	<i>Guibemantis timidus</i>	Toamasina	ZMA 19492	AY684185		
<i>Guibemantis timidus</i>	<i>Guibemantis timidus</i>	Manombo	UADBA (ZCMV 452)	FJ559213	No obvious differences	No obvious differences
<i>Guibemantis tornieri</i>	<i>Guibemantis tornieri</i>	Mantadia	UADBA (FGMV 2001 1094)	FJ559214		
<i>Guibemantis tornieri</i>	<i>Guibemantis tornieri</i>	Ranomafana (Vohiparara)	ZCMV 179	AY848103		
<i>Heterixalus alboguttatus</i>	<i>Heterixalus alboguttatus</i>	Ranomafana	not preserved	EF646689		
<i>Heterixalus andrakata</i>	<i>Heterixalus andrakata</i>	Montagne des Francais	ZSM 508/2000	EF646676		
<i>Heterixalus betsileo</i>	<i>Heterixalus betsileo</i>	Andringitra	ZSM 718/2001	EF646668		
<i>Heterixalus boettgeri</i>	<i>Heterixalus boettgeri</i>	Tolagnaro	not preserved	EF646690		
<i>Heterixalus carbonei</i>	<i>Heterixalus carbonei</i>	Bemaraha	MSNG 49090	EF646691		
<i>Heterixalus luteostriatus</i>	<i>Heterixalus luteostriatus</i>	Ankarafantsika	UADBA (FGMV 2000.274)	EF646665		
<i>Heterixalus madagascariensis</i>	<i>Heterixalus madagascariensis</i>	Sambava	ZSM 568/2000	EF646682		
<i>Heterixalus punctatus</i>	<i>Heterixalus punctatus</i>	Andasibe	ZSM 683/2001	EF646670		
<i>Heterixalus punctatus</i>	<i>Heterixalus punctatus</i>	Sambava	ZSM 571/2000	EF646679	No obvious differences	Color pattern differences (no black spots)

<i>Heterixalus rutenbergi</i>	<i>Heterixalus rutenbergi</i>	Itremo	ZSM 789/2001	EF646667		
<i>Heterixalus tricolor</i>	<i>Heterixalus tricolor</i>	Ankarafantsika	ZSM 698/2001	EF646663		
<i>Heterixalus variabilis</i>	<i>Heterixalus variabilis</i>	Nosy Faly	not preserved	EF646684		
<i>Hoplobatrachus tigerinus</i>	<i>Hoplobatrachus tigerinus</i>	Antsiranana	ZSM 503/2000	AY014370		
<i>Laliostoma labrosum</i>	<i>Laliostoma labrosum</i>	Bemaraha	ZSM 16/2006	FJ559215		
<i>Mantella aurantiaca</i>	<i>Mantella aurantiaca</i>	Torotorofotsy	ZCMV 2048	FJ559216		
<i>Mantella baroni</i>	<i>Mantella baroni</i>	Ranomena	ZCMV 3343	FJ559217		
<i>Mantella bernhardi</i>	<i>Mantella bernhardi</i>	Veveembe	ZMA 20190	FJ559218		
<i>Mantella betsileo</i>	<i>Mantella betsileo</i>	Isalo	MVTIS AC155	FJ559219		
<i>Mantella cowani</i>	<i>Mantella cowani</i>	Antoetra	MVTIS KCW112	FJ559220		
<i>Mantella crocea</i>	<i>Mantella crocea</i>	Ampangadimbolana	MVTIS CS61	AJ438897		
<i>Mantella ebenau</i>	<i>Mantella ebenau</i>	Nosy Be	UADBA (FGMV 2001.6)	FJ559221		
<i>Mantella expectata</i>	<i>Mantella expectata</i>	pet trade	MVTIS CS06	AJ438889		
<i>Mantella haraldmeieri</i>	<i>Mantella haraldmeieri</i>	Manatantely	ZSM 156/2004	FJ559222		
<i>Mantella laevigata</i>	<i>Mantella laevigata</i>	Marojejy	FGZC 2760	FJ559223		
<i>Mantella madagascariensis</i>	<i>Mantella madagascariensis</i>	Ranomafana	ZSM 670/2003	FJ559224		
<i>Mantella manery</i>	<i>Mantella manery</i>	Marojejy	ZSM (uncatalogued)	FJ559225		
<i>Mantella milotympanum</i>	<i>Mantella milotympanum</i>	Fierenana	ZMA 19317	FJ559226		
<i>Mantella nigricans</i>	<i>Mantella nigricans</i>	Marojejy	ZCMV 846	FJ559227		
<i>Mantella pulchra</i>	<i>Mantella pulchra</i>	An'Ala	ZCMV 2490	FJ559228		
<i>Mantella</i> sp. 1	<i>Mantella</i> sp. aff. <i>expectata</i> "South"	Tranomaro	FGZC 2325	FJ559229	No obvious differences	Distinct color differences; CCS due to constant genetic differences, widespread distribution and lack of diagnostic color of <i>M. expectata</i>
<i>Mantella viridis</i>	<i>Mantella viridis</i>	pet trade	MVTIS CS05	FJ559230		
<i>Mantidactylus aerumnalis</i>	<i>Mantidactylus aerumnalis</i>	An'Ala	MVTIS 2002A2	AY848125		

<i>Mantidactylus albofrenatus</i>	<i>Mantidactylus albofrenatus</i>	Andasibe	UADBA (FGMV 2001.1169)	AY848267		
<i>Mantidactylus albofrenatus</i>	<i>Mantidactylus albofrenatus</i>	Sahavontsira	MVTIS AC481 5635	FJ559231		
<i>Mantidactylus alutus</i>	<i>Mantidactylus alutus</i>	Mantaoa	ZSM 355/2000	FJ559232		
<i>Mantidactylus ambreensis</i>	<i>Mantidactylus ambreensis</i>	Montagne d'Ambre	ZSM 229/2004	AY848129		
<i>Mantidactylus argenteus</i>	<i>Mantidactylus argenteus</i>	Mantadia	ZSM 47/2002	DQ235447		
<i>Mantidactylus bellyi</i>	<i>Mantidactylus bellyi</i>	Montagne d'Ambre	MVTIS E179	FJ559233		
<i>Mantidactylus betsileanus</i>	<i>Mantidactylus betsileanus</i>	Andasibe	ZCMV 3260	FJ559234		
<i>Mantidactylus biporus</i>	<i>Mantidactylus biporus</i>	Moramanga	ZCMV 3259	FJ559235		
<i>Mantidactylus bourgati</i>	<i>Mantidactylus bourgati</i>	Andringitra	MVTIS_E53_9	AY848237		
<i>Mantidactylus brevipalmatus</i>	<i>Mantidactylus brevipalmatus</i>	Antoetra	UADBA 21181	AY848132		
<i>Mantidactylus charlotteae</i>	<i>Mantidactylus charlotteae</i>	Nosy Mangabe	ZCMV 2115	FJ559236		
<i>Mantidactylus cowanii</i>	<i>Mantidactylus cowanii</i>	Mantadia	ZSM 171/2002	AY341711		
<i>Mantidactylus curtus</i>	<i>Mantidactylus curtus</i>	Col de Tapias	UADBA (ZCMV 10)	AY848288		
<i>Mantidactylus delormei</i>	<i>Mantidactylus delormei</i>	Andringitra	ZSM 751/2001	AY848148		
<i>Mantidactylus femoralis</i>	<i>Mantidactylus femoralis</i>	Isalo	ZMA 19469	AY848138		
<i>Mantidactylus grandidieri</i>	<i>Mantidactylus grandidieri</i>	Ambohitsara	ZMA 20216	AY848168		
<i>Mantidactylus guttulatus</i>	<i>Mantidactylus guttulatus</i>	Tsaratanana	ZSM 644/2001	FJ559237		
<i>Mantidactylus lugubris</i>	<i>Mantidactylus lugubris</i>	Andasibe	ZSM 166/2002	AY848178		
<i>Mantidactylus lugubris</i>	<i>Mantidactylus lugubris</i>	Sahavontsira	MVTIS AC517 / FAZC 5584	FJ559238		
<i>Mantidactylus madecassus</i>	<i>Mantidactylus madecassus</i>	Andringitra	UADBA 20639	AY848297		
<i>Mantidactylus majori</i>	<i>Mantidactylus majori</i>	Ranomafana	UADBA 20639	AY848187		
<i>Mantidactylus melanopleura</i>	<i>Mantidactylus melanopleura</i>	Andasibe	UADBA (FGMV 1276)	FJ559239		
<i>Mantidactylus melanopleura</i>	<i>Mantidactylus melanopleura</i>	Andohahela	UADBA (FGZC 186)	AY848193	No call differences	No morphological differences
<i>Mantidactylus melanopleura</i>	<i>Mantidactylus melanopleura</i>	Ranomafana	ZSM 669/2003	AY848195		
<i>Mantidactylus noralottae</i>	<i>Mantidactylus noralottae</i>	Isalo	MRSN 5254	EF222308		
<i>Mantidactylus opiparis</i>	<i>Mantidactylus opiparis</i>	Ambohitantely	FGZC 2125	FJ559240		

<i>Mantidactylus pauliani</i>	<i>Mantidactylus pauliani</i>	Ankaratra	ZSM 756/2001	AY848298		
<i>Mantidactylus</i> sp. 1	<i>Mantidactylus aerumnalis</i>	Ranomafana	ZMA 19404	AY848126	Unknown	Constant color differences
<i>Mantidactylus</i> sp. 2	Not included	Sahavontsira	MVTIS AC482 / FAZC 5585	FJ559241	Unknown	Unknown
<i>Mantidactylus</i> sp. 3	Not included	Ambohitantely	FGZC 2161	FJ559242	Probably distinct call differences	Not assessed
<i>Mantidactylus</i> sp. 4	<i>Mantidactylus charlotteae</i>	Ranomafana (Maharira)	ZMA 20038	AY848135	Unknown	Not assessed
<i>Mantidactylus</i> sp. 5	Not included	Farimazava	FAZC 11520	FJ559243	Unknown	Unknown
<i>Mantidactylus</i> sp. 6	Not included	Sahavontsira	MVTIS AC489 / FAZC 5642	FJ559244	Unknown	Unknown
<i>Mantidactylus</i> sp. 7	<i>Mantidactylus tricinctus</i>	Manantantely	ZSM 146/2004	AY848141	Unknown	Distinct color differences
<i>Mantidactylus</i> sp. 9	<i>Mantidactylus charlotteae</i>	Ambohitsara	ZCMV 67	AY848287	Unknown	Not assessed
<i>Mantidactylus</i> sp. 10	Not included	Ampasimazava	MVTIS AC478 5541	FJ559245	Unknown	Unknown
<i>Mantidactylus</i> sp. 11	<i>Mantidactylus charlotteae</i>	Andranofotsy	MVTIS 2002 A53	FJ559246	Unknown	No obvious morphological differences
<i>Mantidactylus</i> sp. 12	<i>Mantidactylus charlotteae</i>	Marojejy	FGZC 2733	FJ559247	Unknown	No obvious morphological differences
<i>Mantidactylus</i> sp. 13	<i>Mantidactylus charlotteae</i>	Ranomafana	ZSM 748/2003	FJ559248	Qualitative differences	Distinct differences
<i>Mantidactylus</i> sp. 14	<i>Mantidactylus</i> sp. aff. <i>ulcerosus</i> "Isalo"	Isalo	ZSM 23/2004	AY848286	Qualitative differences	Slight differences
<i>Mantidactylus</i> sp. 15	Not included	Sahavontsira	MVTIS AC488 5633	FJ559249	Unknown	Unknown
<i>Mantidactylus</i> sp. 16	<i>Mantidactylus</i> sp. aff. <i>biporus</i> "Andranofotsy"	Marojejy	ZCMV 2017	FJ559250	Unknown	Unknown
<i>Mantidactylus</i> sp. 17	<i>Mantidactylus</i> sp. aff. <i>biporus</i> "Ambohitantely"	Ambohitantely	FGZC 2146	FJ559251	Possibly quantitative differences	Slight differences
<i>Mantidactylus</i> sp. 18	<i>Mantidactylus</i> sp. aff. <i>curtus</i> "Ambohitantely"	Ambohitantely	FGZC 2143	FJ559252	Unknown	Slight but constant color differences
<i>Mantidactylus</i> sp. 19	<i>Mantidactylus</i> sp. aff. <i>curtus</i> "Ankaratra"	Ankaratra	UADBA (FGMV 2002.2109)	AY848254	Probably no distinct differences	Slight differences to <i>M. curtus</i>
<i>Mantidactylus</i> sp. 20	<i>Mantidactylus</i> sp. aff. <i>pauliani</i> "Itremo"	Itremo	ZSM 763/2001	AY848219	Unknown	Size differences to <i>M. pauliani</i> , morphological and probably ecological differences to syntopic <i>M. curtus</i>
<i>Mantidactylus</i> sp. 21	Not included	Cap Est	ZFMK 72048	AF215323	Unknown	Slight morphological differences

<i>Mantidactylus</i> sp. 22	<i>Mantidactylus</i> sp. aff. <i>biporus</i> "Andranofotsy"	Andranofotsy	ZSM 122/2002	FJ559253	Possibly quantitative differences	Slight morphological differences
<i>Mantidactylus</i> sp. 23	<i>Mantidactylus</i> sp. aff. <i>biporus</i> "Andasibe"	Andasibe	ZSM 85/2002	FJ559254	Unknown	Distinct differences in head shape
<i>Mantidactylus</i> sp. 24	<i>Mantidactylus</i> sp. aff. <i>biporus</i> "Ranomafana"	Ranomafana	ZCMV 3366	FJ559255	Possibly quantitative differences	Probably differences in body proportions
<i>Mantidactylus</i> sp. 25	Not included	Ampasimazava	MVTIS AC486 / FAZC 5535	FJ559256	Unknown	Unknown
<i>Mantidactylus</i> sp. 26	<i>Mantidactylus</i> sp. aff. <i>betsileanus</i> "Andranofotsy"	Andranofotsy	ZSM 176/2002	FJ559257	Unique call	Slight morphological differences
<i>Mantidactylus</i> sp. 27	<i>Mantidactylus</i> sp. aff. <i>betsileanus</i> "Nosy Boraha"	Nosy Boraha	ZCMV 3390	FJ559258	Distinct quantitative call differences	Not assessed
<i>Mantidactylus</i> sp. 28	<i>Mantidactylus</i> sp. aff. <i>betsileanus</i> "slow calls"	Andohahela	ZSM 91/2004	AY848274	Qualitative call differences	Differences in femoral gland shape
<i>Mantidactylus</i> sp. 29	<i>Mantidactylus</i> sp. aff. <i>betsileanus</i> "Tolagnaro"	Andohahela	ZSM 70/2004	AY848273	Quantitative call differences	Slight morphological differences
<i>Mantidactylus</i> sp. 30	<i>Mantidactylus</i> sp. aff. <i>betsileanus</i> "Andohahela"	Andohahela	FGZC 2376	FJ559259	Qualitative call differences	Differences in head shape
<i>Mantidactylus</i> sp. 31	Not included	Sahavontsira	MVTIS AC491 / FAZC 5530	FJ559260	Unknown	Unknown
<i>Mantidactylus</i> sp. 32	<i>Mantidactylus</i> sp. aff. <i>biporus</i> "Tsaratanana Andampy"	Manongarivo	UADBA (FGMV 2002.756)	AY848263	Qualitative call differences	Morphological differences; sympatric with <i>M.</i> sp. 33
<i>Mantidactylus</i> sp. 33	<i>Mantidactylus</i> sp. aff. <i>biporus</i> "Tsaratanana Antsahamanara"	Tsaratanana (Antsahamanara campsite)	UADBA (MV 2001.60)	FJ559261	Possibly quantitative call differences	Morphological differences; sympatric with <i>M.</i> sp. 32
<i>Mantidactylus</i> sp. 34	Not included	Vohidrazana	UADBA (FGMV 2001.1156)	FJ559262	Unknown	Unknown
<i>Mantidactylus</i> sp. 35	<i>Mantidactylus</i> sp. aff. <i>betsileanus</i> "Toamasina"	Maroantsetra	ZCMV 803	AY848259	Possibly quantitative call differences	Slight morphological differences
<i>Mantidactylus</i> sp. 36	<i>Mantidactylus</i> sp. aff. <i>betsileanus</i> "Toamasina"	Toamasina	ZCMV 805	AY848260	Possibly quantitative call differences	Slight morphological differences
<i>Mantidactylus</i> sp. 37	Not included	Sahavontsira	MVTIS AC498 5652	FJ559263	Unknown	Unknown
<i>Mantidactylus</i> sp. 38	<i>Mantidactylus</i> spp. aff. <i>mocquardi</i>	Andasibe	UADBA (FGMV 2001.1277)	DQ235430	Unknown	Unknown
<i>Mantidactylus</i> sp. 39	<i>Mantidactylus</i> spp. aff. <i>femoralis</i>	Marojejy	FGZC 2884	FJ559264	Unknown	Unknown
<i>Mantidactylus</i> sp. 40	<i>Mantidactylus</i> spp. aff. <i>femoralis</i>	Manongarivo	ZSM 855/2003	FJ559265	Unknown	Morphological and color differences
<i>Mantidactylus</i> sp. 41	<i>Mantidactylus</i> sp. aff. <i>majori</i> "Andapa"	Andapa	FGZC 2719	FJ559266	Unknown	Morphological differences (head shape reminds <i>M. majori</i>)

<i>Mantidactylus</i> sp. 42	<i>Mantidactylus</i> spp. aff. <i>femoralis</i>	Montagne d'Ambre	UADBA (FGMV 2002.929)	FJ559267	Unknown	Not assessed
<i>Mantidactylus</i> sp. 43	<i>Mantidactylus</i> spp. aff. <i>femoralis</i>	Marojejy	FGZC 2797	FJ559268	Unknown	Not assessed
<i>Mantidactylus</i> sp. 44	<i>Mantidactylus</i> spp. aff. <i>femoralis</i>	Ambohitsara	ZCMV 5865	FJ559269	Qualitative difference	Different morphology
<i>Mantidactylus</i> sp. 45	<i>Mantidactylus</i> spp. aff. <i>mocquardi</i>	Manongarivo	ZSM 854/2003	FJ559270	Unknown	Morphological differences
<i>Mantidactylus</i> sp. 46	<i>Mantidactylus</i> spp. aff. <i>mocquardi</i>	Marojejy	ZCMV 2024	FJ559271	Unknown	Morphological differences
<i>Mantidactylus</i> sp. 47	<i>Mantidactylus</i> spp. aff. <i>mocquardi</i>	Ambatolahy	ZCMV 2860	FJ559272	Unknown	Morphological differences
<i>Mantidactylus</i> sp. 48	<i>Mantidactylus</i> sp. aff. <i>cowanii</i> "small"	Itremo	ZSM 754/2001	FJ559273	Unknown	Distinct morphological differences
<i>Mantidactylus</i> sp. 49	<i>Mantidactylus</i> sp. aff. <i>lugubris</i> "Tolagnaro"	Andohahela	ZSM 69/2004	AY848174	Unknown	Distinct morphological differences
<i>Mantidactylus</i> sp. 50	Not included	Moramena (Masoala)	MVTIS FA-m63	AY848181	Unknown	Unknown
<i>Mantidactylus</i> sp. 52	<i>Mantidactylus</i> sp. aff. <i>lugubris</i> "Marojejy"	Marojejy	FGZC 2767	FJ559274	Unknown	Distinct morphological differences
<i>Mantidactylus</i> sp. 53	Not included	Masoala	FAZC 5132	AY848173	Unknown	Unknown
<i>Mantidactylus</i> sp. 54	Not included	Besariaka	FAZC 7609	AY848180	Unknown	Unknown
<i>Mantidactylus</i> sp. 55	Not included	Betampona	MVTIS AC806 / FAZC 13578	FJ559275	Unknown	Unknown
<i>Mantidactylus</i> sp. 56	Not included	Betampona	MVTIS AC809 / FAZC 13579	FJ559276	Unknown	Unknown
<i>Mantidactylus</i> sp. 57	<i>Mantidactylus</i> sp. aff. <i>grandidieri</i> "North"	Nosy Mangabe	ZCMV 2158	FJ559277	Not assessed	Morphological differences
<i>Mantidactylus</i> sp. 58	Not included	Ranomafana	MVTIS HG1-HP4	FJ559278	Unknown	Unknown
<i>Mantidactylus</i> sp. 59	Not included	Ranomafana	MVTIS HG1-HP1	FJ559279	Qualitative differences	Morphological differences (tympanum size)
<i>Mantidactylus</i> sp. 60	Not included	Mahasoa forest	ZCMV 8811	FJ559280	Unknown	Unknown
<i>Mantidactylus tricinctus</i>	<i>Mantidactylus tricinctus</i>	Manombo	ZMA 20100	AY848128		
<i>Mantidactylus tricinctus</i>	<i>Mantidactylus</i> sp. aff. <i>tricinctus</i> "AnAla"	An'Ala	ZCMV 1404	FJ559281	No call differences	No morphological differences
<i>Mantidactylus ulcerosus</i>	<i>Mantidactylus ulcerosus</i>	Ankarafantsika	FGMV 2001.403	FJ559282		
<i>Mantidactylus zipperi</i>	<i>Mantidactylus zipperi</i>	An'Ala	ZCMV 1403	FJ559283		

<i>Mantidactylus zolitschka</i>	<i>Mantidactylus zolitschka</i>	An'Ala	ZSM 184/2003	AY324811		
<i>Paradoxophyla palmata</i>	<i>Paradoxophyla palmata</i>	Ranomafana	ZSM 792/2003	AY834188		
<i>Paradoxophyla tiarano</i>	<i>Paradoxophyla tiarano</i>	Masoala	FAZC 10430	AY834186		
<i>Platypelis barbouri</i>	<i>Platypelis barbouri</i>	Andasibe	ZSM 1/2002	EU341097		
<i>Platypelis barbouri</i>	<i>Platypelis barbouri</i>	Antara	FAZC 5528	FJ559284		
<i>Platypelis grandis</i>	<i>Platypelis grandis</i>	Montagne d'Ambre	UADBA 24118	EU341099		
<i>Platypelis grandis</i>	<i>Platypelis grandis</i>	Andohahela	UADBA (FGZC 180)	EU341095	Unknown	No obvious morphological differences
<i>Platypelis mavomavo</i>	<i>Platypelis mavomavo</i>	Ambolokopatrika	MRSN A2434	FJ559285		
<i>Platypelis milloti</i>	<i>Platypelis milloti</i>	Manongarivo	ZSM 817/2003	AY4594103		
<i>Platypelis pollicaris</i>	<i>Platypelis pollicaris</i>	Ambohitantly	FGZC 2104	EU341098		
<i>Platypelis pollicaris</i>	<i>Platypelis pollicaris</i>	Farimazava	FAZC 11456	FJ559286		
<i>Platypelis</i> sp. 1	Not included	Sahavontsira	MVTIS AC456 / FAZC 5634	FJ559287	Unknown	Unknown
<i>Platypelis</i> sp. 2	Not included	Betampona	MVTIS AC545 / FAZC 5687	FJ559288	Unknown	Unknown
<i>Platypelis</i> sp. 3	Not included	Ambolokopatrika	FAZC 7148	AY594097	Unknown	Unknown
<i>Platypelis</i> sp. 4	<i>Platypelis</i> sp. aff. <i>mavomavo</i> 2	Marojejy	FGZC 2813	EU341101	Unknown	Distinct differences in color
<i>Platypelis</i> sp. 5	Not included	Manombo	ZCMV 5492	FJ559289	Distinct quantitative differences	Not assessed
<i>Platypelis</i> sp. 6	<i>Platypelis pollicaris</i>	Ranomafana	ZSM 791/2003	AY594101	Unknown	Differences in color
<i>Platypelis</i> sp. 7	<i>Platypelis</i> spp.	Marojejy	ZCMV 2012	FJ559290	Unknown	Differences in morphology
<i>Platypelis</i> sp. 8	<i>Platypelis</i> sp. aff. <i>mavomavo</i>	Manarikoba (Tsaratanana)	MVTIS 2001F48	EU341096	Unknown	Distinct color differences
<i>Platypelis</i> sp. 9	<i>Platypelis cowani</i>	Betampona	FAZC 13567	FJ559291	Unknown	Unknown
<i>Platypelis</i> sp. 10	Not included	Andranomapanga	ZCMV 8866	FJ559292	Unknown	Distinct color differences
<i>Platypelis tuberifera</i>	<i>Platypelis tuberifera</i>	Andasibe	ZSM 2/2002	EU341093		
<i>Platypelis tuberifera</i>	<i>Platypelis tuberifera</i>	Marojejy	FGZC 2840	EU352823		
<i>Plethodontohyla bipunctata</i>	<i>Plethodontohyla bipunctata</i>	Andohahela	ZSM 89/2004	EU341068		
<i>Plethodontohyla brevipes</i>	<i>Plethodontohyla brevipes</i>	Maharira	ZMA (ZCMV 270)	EU341063		

<i>Plethodontohyla fonetana</i>	<i>Plethodontohyla fonetana</i>	Bemaraha	ZSM 123/2006	EU341058		
<i>Plethodontohyla guentheri</i>	<i>Plethodontohyla guentheri</i>	Marojejy	FGZC 2814	EU341059		
<i>Plethodontohyla inguinalis</i>	<i>Plethodontohyla inguinalis</i>	Vohiparara	ZMA 20223	EU341057		
<i>Plethodontohyla mihanika</i>	<i>Plethodontohyla mihanika</i>	Ranomafana	UADBA (ZCMV 308)	EU341056		
<i>Plethodontohyla notosticta</i>	<i>Plethodontohyla notosticta</i>	Nosy Mangabe	ZCMV 2106	EU341061		
<i>Plethodontohyla notosticta</i>	<i>Plethodontohyla notosticta</i>	Manombo	ZCMV 471	EU341060		
<i>Plethodontohyla ocellata</i>	<i>Plethodontohyla ocellata</i>	Ambohitsara	UADBA (ZCMV 88)	EU341062		
<i>Plethodontohyla</i> sp. 1	Not included	Ambatolahy	ZCMV 555	EU341067	Unknown	Differences in color and probably slightly in morphology
<i>Plethodontohyla</i> sp. 2	Not included	Tsaranana	MVTIS 2001E50	FJ559293	Unknown	Unknown
<i>Plethodontohyla</i> sp. 3	Not included	Betampona	FAZC 13902	FJ559294	Unknown	Distinct morphological differences
<i>Plethodontohyla tuberata</i>	<i>Plethodontohyla tuberata</i>	Manjakatombo	ZSM 375/2000	EU341064		
<i>Ptychadena mascareniensis</i>	<i>Ptychadena mascareniensis</i>	Ambanja	ZSM 421/2000	AY517591		
<i>Ptychadena mascareniensis</i>	<i>Ptychadena mascareniensis</i>	Sambava	ZSM 562/2000	AY517594	Unknown	No obvious differences
<i>Rhombophryne alluaudi</i>	<i>Rhombophryne alluaudi</i>	Torotorofotsy	ZCMV 968	EU341105		
<i>Rhombophryne coronata</i>	<i>Rhombophryne coronata</i>	Mandraka	ZSM 694/2001	EU341103		
<i>Rhombophryne coudreaui</i>	<i>Rhombophryne coudreaui</i>	Betampona	FAZC 13887	FJ559299		
<i>Rhombophryne laevipes</i>	<i>Rhombophryne laevipes</i>	Montagne d'Ambre	ZSM 218/2004	EU341104		
<i>Rhombophryne minuta</i>	<i>Rhombophryne minuta</i>	Marojejy	FGZC 2899	EU341106		
<i>Rhombophryne serratopalpebrosa</i>	<i>Rhombophryne serratopalpebrosa</i>	Ambolokopatrika	FAZC 7292	EU341111		
<i>Rhombophryne</i> sp. 1	Not included	Ilampy	FAZC 10314	FJ559295	Unknown	Unknown
<i>Rhombophryne</i> sp. 2	Not included	Marojejy	FGZC 2896	EU341102	Unknown	Morphological differences to all described <i>Rhombophryne</i>
<i>Rhombophryne</i> sp. 3	Not included	Tsaranana	ZSM 667/2001	FJ559296	Unknown	Not assessed
<i>Rhombophryne</i> sp. 4	Not included	Marojejy	ZCMV 2065	FJ559297	Unknown	Not assessed

<i>Rhombophryne</i> sp. 5	<i>Rhombophryne</i> sp. aff. <i>minuta</i>	NosyMangabe	ZCMV 886	EU341109	Unique call	Morphological differences to all described
<i>Rhombophryne</i> sp. 6	<i>Rhombophryne serratopalpebrosa</i>	Marojejy	FGZC 2842	EU341107	Unknown	<i>Rhombophryne</i> Morphological differences to other <i>Rhombophryne</i> with supraocular spines
<i>Rhombophryne</i> sp. 7	Not included	Tsaratanana	MVTIS 2001G46	EU341108	Unknown	Not assessed
<i>Rhombophryne</i> sp. 8	Not included	Forêt d'Ambre	FGZC 1888	FJ559298	Qualitative differences	Distinct morphological differences to <i>R. testudo</i>
<i>Rhombophryne</i> sp. 9	<i>Rhombophryne coudreaui</i>	Masoala	MRSN A2115	AY594110	Unknown	Morphological differences
<i>Rhombophryne</i> sp. 10	Not included	Masoala (Ilampy)	FAZC 10312 / MRSN A2610	AY594111	Unknown	Unknown
<i>Rhombophryne testudo</i>	<i>Rhombophryne testudo</i>	Nosy Be	ZSM 475/2000	AY594125		
<i>Scaphiophryne boribory</i>	<i>Scaphiophryne boribory</i>	Fierenana region	ZSM 644/2000	AJ314810		
<i>Scaphiophryne brevis</i>	<i>Scaphiophryne brevis</i>	Berenty	ZSM 162/2002	AY834195		
<i>Scaphiophryne calcarata</i>	<i>Scaphiophryne</i> aff. <i>calcarata A</i>	Ampijoroa (Ankarafantsika)	ZSM 715/2001	AJ314811		
<i>Scaphiophryne gottlebei</i>	<i>Scaphiophryne gottlebei</i>	Isalo region	---	AF215385		
<i>Scaphiophryne madagascariensis</i>	<i>Scaphiophryne madagascariensis</i>	Andringitra	MVTIS TAD	AY834190		
<i>Scaphiophryne marmorata</i>	<i>Scaphiophryne marmorata</i>	Andasibe	ZSM 4/2002	AY834191		
<i>Scaphiophryne menabensis</i>	<i>Scaphiophryne menabensis</i>	Kirindy	ZSM 189/2003	AY834189		
<i>Scaphiophryne</i> sp. 1	<i>Scaphiophryne</i> aff. <i>calcarata B</i>	Tolagnaro	ZSM 115/2002	AY834193	Qualitative differences	Not assessed
<i>Scaphiophryne spinosa</i>	<i>Scaphiophryne spinosa</i>	pet trade	---	AF215383		
<i>Spinomantis aglavei</i>	<i>Spinomantis aglavei</i>	Maharira	UADBA (ZCMV 240)	AY848394		
<i>Spinomantis aglavei</i>	<i>Spinomantis aglavei</i>	Sahavontsira	MVTIS AC476 / FAZC 5677	FJ559300		
<i>Spinomantis bertini</i>	<i>Spinomantis bertini</i>	Andohahela	FGZC 2431	FJ559301		
<i>Spinomantis elegans</i>	<i>Spinomantis elegans</i>	Andringitra	ZSM 971/2003	AY848405		
<i>Spinomantis fimbriatus</i>	<i>Spinomantis fimbriatus</i>	Andasibe	MVTIS Tad417-2004	FJ559302		

<i>Spinomantis fimbriatus</i>	<i>Spinomantis fimbriatus</i>	Marojejy	FGZC 2852	FJ559303	No obvious differences	No obvious differences
<i>Spinomantis guibei</i>	<i>Spinomantis guibei</i>	Andohahela	FGZC 2435	FJ559304		
<i>Spinomantis massi</i>	<i>Spinomantis massorum</i>	Manongarivo	UADBA (FGMV 2002.803)	AY848412		
<i>Spinomantis microtis</i>	<i>Spinomantis microtis</i>	Andohahela	FGZC 2532	FJ559305		
<i>Spinomantis peraccae</i>	<i>Spinomantis peraccae</i>	Maharira	ZMA 20251	AY848416		
<i>Spinomantis phantasticus</i>	<i>Spinomantis phantasticus</i>	Vohidrazana	ZMA 19627	AY848417		
<i>Spinomantis</i> sp. 2	<i>Spinomantis fimbriatus</i>	Ranomafana	ZSM 445/2004	DQ060236	Unknown	Unknown
<i>Spinomantis</i> sp. 3	Not included	Masoala	FAZC 7629	AY848387	Unknown	Unknown
<i>Spinomantis</i> sp. 4	Not included	Marojejy	FGZC 2278	FJ559306	Unknown	Unknown
<i>Spinomantis</i> sp. 5	<i>Spinomantis peraccae</i>	Tsaratana	MRSN 6737	FJ559307	Slight (quantitative) differences	Differences in color, possibly in morphology
<i>Spinomantis</i> sp. 6	<i>Spinomantis bertini</i>	Andohahela (low altitude)	UADBA (FGZC 148)	AY848396	Qualitative differences	Distinct differences in morphology
<i>Spinomantis</i> sp. 7	<i>Spinomantis bertini</i>	Ranomafana	ZSM 806/2003	AY848400	Unknown	Unknown
<i>Spinomantis</i> sp. 8	<i>Spinomantis</i> sp. aff. <i>bicalcaratus</i>	Maharira	ZMA 20044	AY848382	Unknown	Extreme differences in morphology and ecology
<i>Spinomantis</i> sp. 9	<i>Spinomantis aglavei</i>	Mahasoa forest	ZCMV 8817	FJ559308	Unknown	Unknown
<i>Stumpffia gimmeli</i>	<i>Stumpffia gimmeli</i>	Berara	ZSM 412/2000	EU341084		
<i>Stumpffia grandis</i>	<i>Stumpffia grandis</i>	Marojejy	FGZC 2820	EU341078		
<i>Stumpffia helenae</i>	<i>Stumpffia helenae</i>	Ambohitantely	FGZC 2101	EU341070		
<i>Stumpffia psologlossa</i>	<i>Stumpffia psologlossa</i>	Benavony	MVTIS 2001-G54	EU341066		
<i>Stumpffia pygmaea</i>	<i>Stumpffia pygmaea</i>	Nosy Be	MVTIS 2001-F21	EU341065		
<i>Stumpffia roseifemoralis</i>	<i>Stumpffia roseifemoralis</i>	Marojejy	FGZC 2858	EU341072		
<i>Stumpffia</i> sp. 1	Not included	Ambohitsara	ZCMV 5868	FJ559309	Different call	Not assessed
<i>Stumpffia</i> sp. 2	Not included	Tsaratana	MRSN A2653	AY594119	Unknown	Unknown
<i>Stumpffia</i> sp. 3	Not included	Antsirasira	ZSM 597/2001	FJ559310	Unknown	Unknown
<i>Stumpffia</i> sp. 4	Not included	Tsaratana	FGMV 2001.50	FJ559311	Unknown	Unknown

<i>Stumpffia</i> sp. 5	Not included	Andapa	FGZC 2725	EU341074	Unknown	Unknown
<i>Stumpffia</i> sp. 6	<i>Stumpffia tridactyla</i>	Andasibe	FGZC 2666	EU341073	Slight differences	Slight differences; CCS because of very different phylogenetic placement from morphologically similar <i>S. tridactyla</i>
<i>Stumpffia</i> sp. 7	Not included	Marojejy	FGZC 2826	EU341083	Unknown	Unknown
<i>Stumpffia</i> sp. 8	<i>Stumpffia</i> sp. aff. <i>grandis</i>	Vohidrazana	FGZC 2677	EU341076	Quantitative differences	Distinct color differences
<i>Stumpffia</i> sp. 9	<i>Stumpffia</i> sp. "Ranomafana"	Ranomafana	ZMA 20201	EU341071	Quantitative differences	Distinct color differences; karyological differences
<i>Stumpffia</i> sp. 10	<i>Stumpffia</i> sp. "Marojejy 2"	Marojejy	FGZC 2729	EU341079	Quantitative differences	Distinct color differences
<i>Stumpffia</i> sp. 11	Not included	Ambolokopatrika	MRSN A2583	AY594120	Unknown	Not assessed in detail; CCS because of unique coloration
<i>Stumpffia</i> sp. 12	Not included	Ambolokopatrika	MRSN A2651	AY594121	Unknown	Unknown
<i>Stumpffia</i> sp. 13	<i>Stumpffia</i> sp. "Marojejy 1"	Marojejy	FGZC 2751	EU341075	Quantitative differences	Distinct color differences
<i>Stumpffia</i> sp. 14	<i>Stumpffia</i> sp. aff. <i>helenae</i> "Bemaraha"	Bemaraha	UADBA (FGZC 713)	EU341069	Unknown	Slight morphological differences (size) to <i>S. helenae</i>
<i>Stumpffia</i> sp. 15	<i>Stumpffia</i> sp. aff. <i>tetradactyla</i> "South"	Manombo	ZMA 20171	EU341082	Not assessed	Not assessed; CCS because of highly divergent phylogenetic placement, corroborated by other markers
<i>Stumpffia</i> sp. 16	<i>Stumpffia</i> sp. aff. <i>tetradactyla</i> "South"	Ste Luce	FGZC 2661	EU341081	Not assessed	Not assessed; CCS because of highly divergent phylogenetic placement, corroborated by other markers
<i>Stumpffia</i> sp. 17	Not included	Betampona	FAZC 13618	FJ559312	Unknown	Unknown
<i>Stumpffia</i> sp. 18	Not included	Mahasoa forest	ZCMV 8803	FJ559313	Strong quantitative difference to	No obvious differences

<i>Stumpffia</i> sp. 19	Not included	Mahasoa forest	ZCMV 8802	FJ559314	sympatric <i>S.</i> sp. 19 String quantitative difference to sympatric <i>S.</i> sp. 18	No obvious differences
<i>Stumpffia</i> sp. 20	Not included	Betampona	FAZC 13903	FJ559315	Unknown	Unknown
<i>Stumpffia</i> sp. 21	Not included	Ampombofofo	FGZC 1951	FJ559316	Unknown	Unknown
<i>Stumpffia</i> sp. 22	Not included	Nosy Hara	FGZC 1293	FJ559317	Unknown	Strongly divergent morphology
<i>Stumpffia</i> sp. 23	Not included	Ankarana	FGZC 1612	FJ559318	Unknown	Probably divergent morphology
<i>Stumpffia</i> sp. 24	Not included	Montagne des Francais	FGZC 1674	FJ559319	Unknown	Probably divergent morphology
<i>Stumpffia</i> sp. 25	Not included	Montagne des Francais	FGZC 1103	FJ559320	Unknown	Unknown
<i>Stumpffia</i> sp. 26	Not included	Ankarana	FGZC 1620	FJ559321	Unknown	Unknown
<i>Stumpffia</i> sp. 27	Not included	Montagne des Francais	FGZC 1901	FJ559322	Unknown	Unknown
<i>Stumpffia tetradactyla</i>	<i>Stumpffia tetradactyla</i>	Nosy Boraha	ZCMV3395	FJ559323		
<i>Stumpffia tetradactyla</i>	<i>Stumpffia tetradactyla</i>	Nosy Mangabe	ZCMV 2143	EU341077	No obvious differences	No obvious differences
<i>Stumpffia tridactyla</i>	<i>Stumpffia tridactyla</i>	Marojejy	FGZC 2844	EU341080		
<i>Tsingymantis antitra</i>	<i>Tsingymantis antitra</i>	Ankarana	FGZC 531	AY848213		
<i>Wakea madinika</i>	<i>Wakea madinika</i>	Antsirrasira	---	AY341703		