

SUPPORTING INFORMATION

Solution-Phase Synthesis of Pyrrole-Imidazole Polyamides

*David M. Chenoweth, Daniel A. Harki, and Peter B. Dervan**

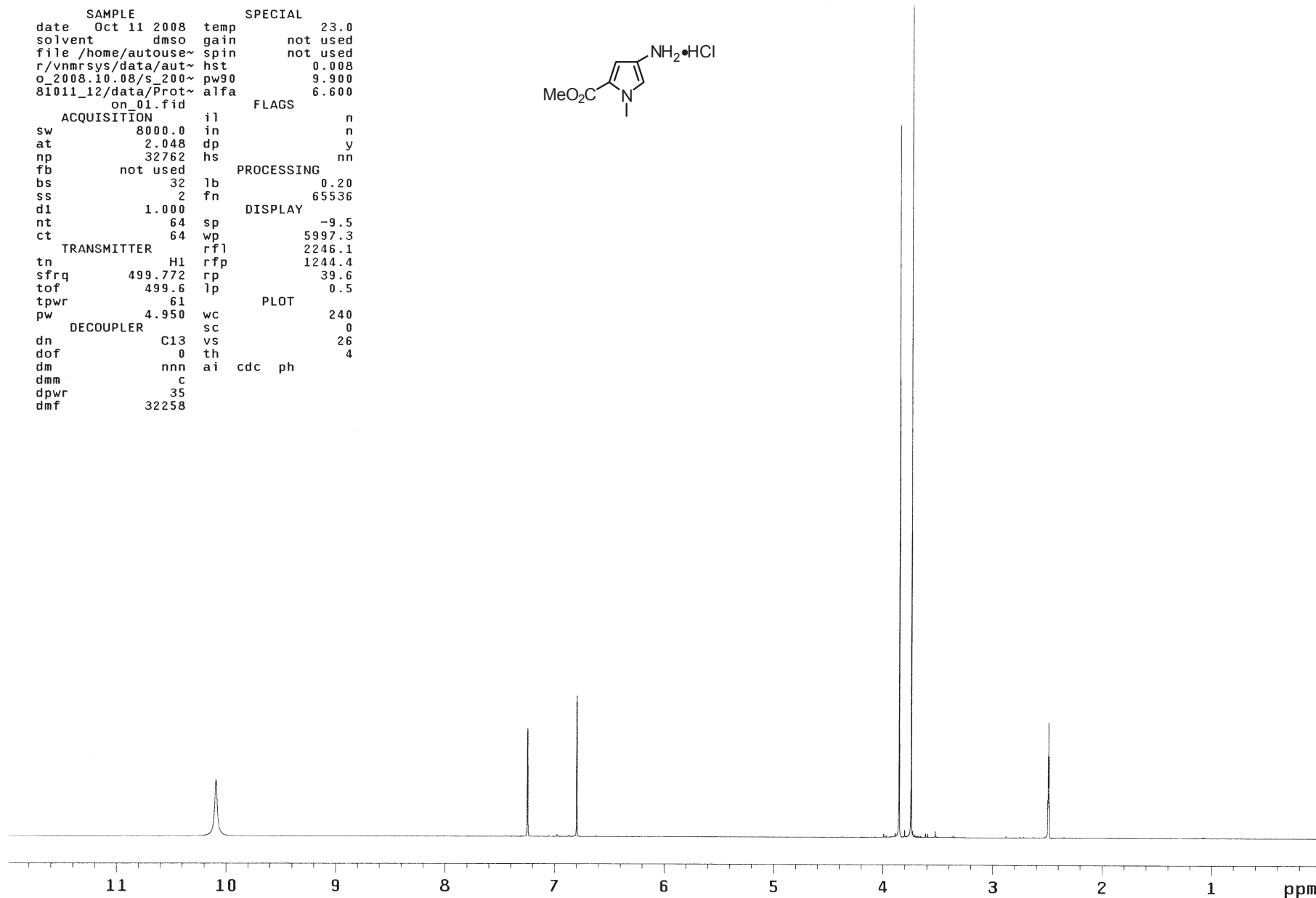
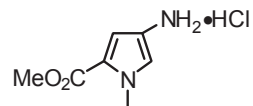
Division of Chemistry and Chemical Engineering, California Institute of Technology, Pasadena, CA 91125

Table of Contents for Supporting NMR Spectra

<u>Compound</u>	<u>Page</u>
¹ H NMR of HCl•H ₂ N-Py-CO ₂ Me (10)	S2
¹³ C NMR of HCl•H ₂ N-Py-CO ₂ Me (10)	S3
¹ H NMR of BocHN-PyPy-CO ₂ Me (11)	S4
¹³ C NMR of BocHN-PyPy-CO ₂ Me (11)	S5
¹ H NMR of HCl•H ₂ N-PyPy-CO ₂ Me (12)	S6
¹³ C NMR of HCl•H ₂ N-PyPy-CO ₂ Me (12)	S7
¹ H NMR of BocHN-PyPyPy-CO ₂ Me (13)	S8
¹³ C NMR of BocHN-PyPyPy-CO ₂ Me (13)	S9
¹ H NMR of HCl•H ₂ N-PyPyPy-CO ₂ Me (4)	S10
¹³ C NMR of HCl•H ₂ N-PyPyPy-CO ₂ Me (4)	S11
¹ H NMR of ImPyPyPy-CO ₂ Me (14)	S12
¹³ C NMR of ImPyPyPy-CO ₂ Me (14)	S13
¹ H NMR of ImPyPyPy-CO ₂ H (3)	S14
¹³ C NMR of ImPyPyPy-CO ₂ H (3)	S15
¹ H NMR of BocHN-(<i>R</i>) ^β -CbzHN _γ -Im-CO ₂ Et (15)	S16
¹³ C NMR of BocHN-(<i>R</i>) ^β -CbzHN _γ -Im-CO ₂ Et (15)	S17
¹ H NMR of HCl•H ₂ N-(<i>R</i>) ^β -CbzHN _γ -Im-CO ₂ Et (5)	S18
¹³ C NMR of HCl•H ₂ N-(<i>R</i>) ^β -CbzHN _γ -Im-CO ₂ Et (5)	S19
¹ H NMR of ImPyPyPy-(<i>R</i>) ^β -CbzHN _γ -Im-CO ₂ Et (16)	S20
¹³ C NMR of ImPyPyPy-(<i>R</i>) ^β -CbzHN _γ -Im-CO ₂ Et (16)	S21
¹ H NMR of ImPyPyPy-(<i>R</i>) ^β -CbzHN _γ -Im-CO ₂ H (17)	S22
¹³ C NMR of ImPyPyPy-(<i>R</i>) ^β -CbzHN _γ -Im-CO ₂ H (17)	S23
¹ H NMR of ImPyPyPy-(<i>R</i>) ^β -CbzHN _γ -ImPyPyPy-CO ₂ Me (2)	S24
¹³ C NMR of ImPyPyPy-(<i>R</i>) ^β -CbzHN _γ -ImPyPyPy-CO ₂ Me (2)	S25
¹ H NMR of ImPyPyPy-(<i>R</i>) ^β -CbzHN _γ -ImPyPyPy-CO ₂ H (22)	S26
¹³ C NMR of ImPyPyPy-(<i>R</i>) ^β -CbzHN _γ -ImPyPyPy-CO ₂ H (22)	S27
¹ H NMR of BocHN-(+)- ^{BnO} IPA (20)	S28
¹³ C NMR of BocHN-(+)- ^{BnO} IPA (20)	S29
¹ H NMR of ImPyPyPy-(<i>R</i>) ^β -CbzHN _γ -ImPyPyPy-(+)- ^{BnO} IPA (23)	S30
¹³ C NMR of ImPyPyPy-(<i>R</i>) ^β -CbzHN _γ -ImPyPyPy-(+)- ^{BnO} IPA (23)	S31
¹ H NMR of ImPyPyPy-(<i>R</i>) ^β -H ₂ N _γ -ImPyPyPy-(+)-IPA (1)	S32
¹³ C NMR of ImPyPyPy-(<i>R</i>) ^β -H ₂ N _γ -ImPyPyPy-(+)-IPA (1)	S33

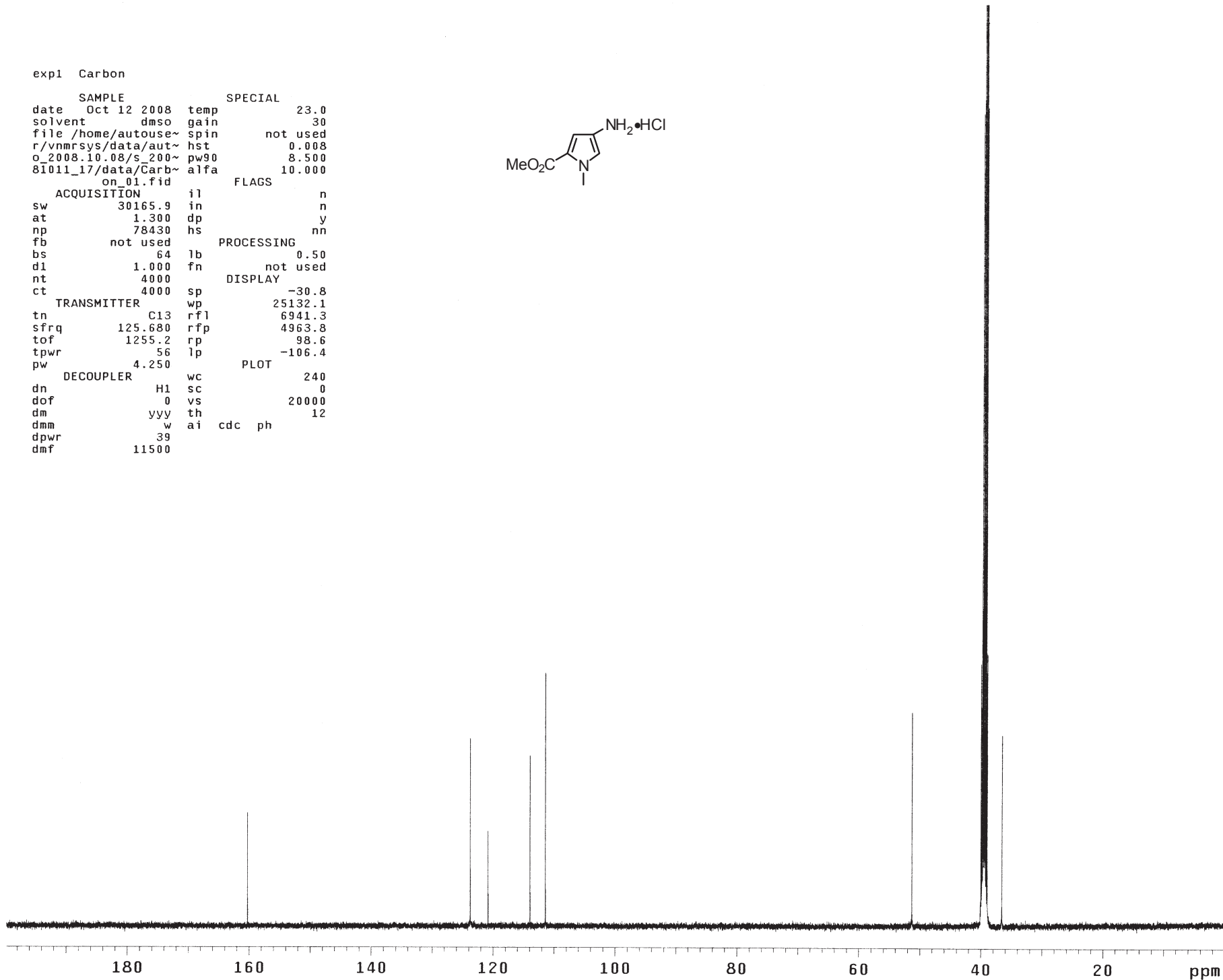
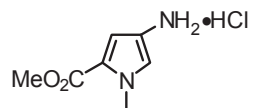
exp1 Proton

```
SAMPLE          SPECIAL
date Oct 11 2008 temp          23.0
solvent dmsso gain          not used
file /home/autouse~ spin        not used
r/vnmrSYS/data/aut~ hst          0.008
o_2008.10.08/s_200~ pw90        9.900
81011_12/data/Prot~ alfa        6.600
on_01.fid
ACQUISITION     il            n
sw 8000.0 in            n
at 2.048 dp            y
np 32762 hs           nn
fb not used
bs 32 lb            0.20
ss 2 fn            65536
dl 1.000
nt 64 sp            -9.5
ct 64 wp            5997.3
TRANSMITTER     rfl            2246.1
tn H1 rfp           1244.4
sfrq 499.772 rp       39.6
tof 499.6 lp         0.5
tpwr 61
pw 4.950 wc          240
DECOUPLER       sc            0
dn C13 vs           26
dof 0 th            4
dm nnn ai cdc ph
dmm c
dpwr 35
dmf 32258
```



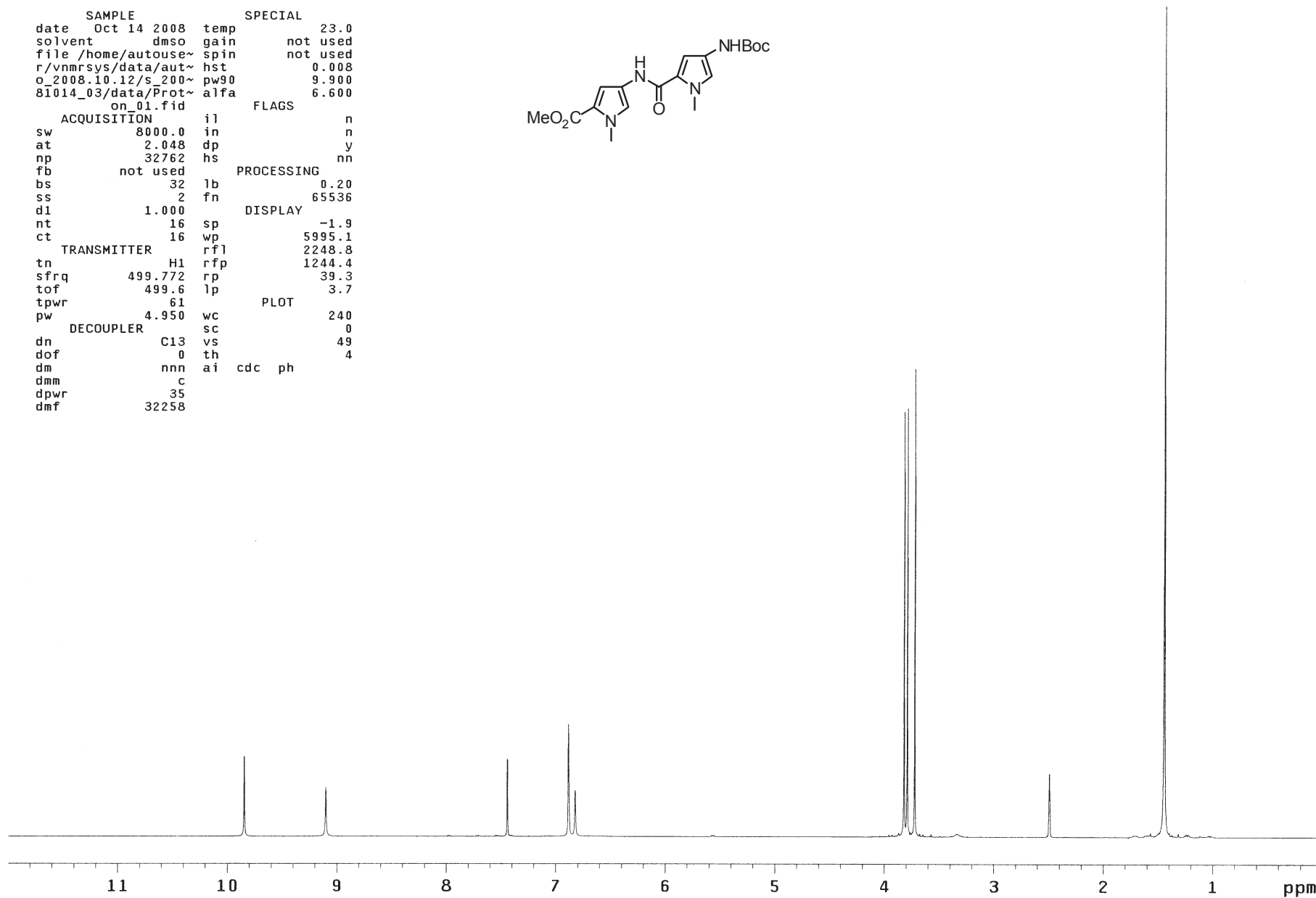
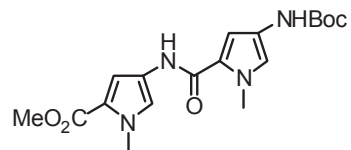
exp1 Carbon

```
SAMPLE SPECIAL
date Oct 12 2008 temp 23.0
solvent dmso gain 30
file /home/autouse~ spin not used
r/vnmrSYS/data/aut~ hst 0.008
o_2008.10.08/s_200~ pw90 8.500
8I011_17/data/Carb~ alfa 10.000
on_01.fid
ACQUISITION il n
sw 30165.9 in n
at 1.300 dp y
np 78430 hs nn
fb not used
bs 64 lb PROCESSING 0.50
d1 1.000 fn not used
nt 4000 DISPLAY
ct 4000 sp -30.8
TRANSMITTER wp 25132.1
tn C13 rfl 6941.3
sfrq 125.680 rfp 4963.8
tof 1255.2 rp 98.6
tpwr 56 lp -106.4
pw 4.250 PLOT
DECOUPLER wc 240
dn H1 sc 0
dof 0 vs 20000
dm VVY th 12
dmm w ai cdc ph
dpwr 39
dmf 11500
```



expl Proton

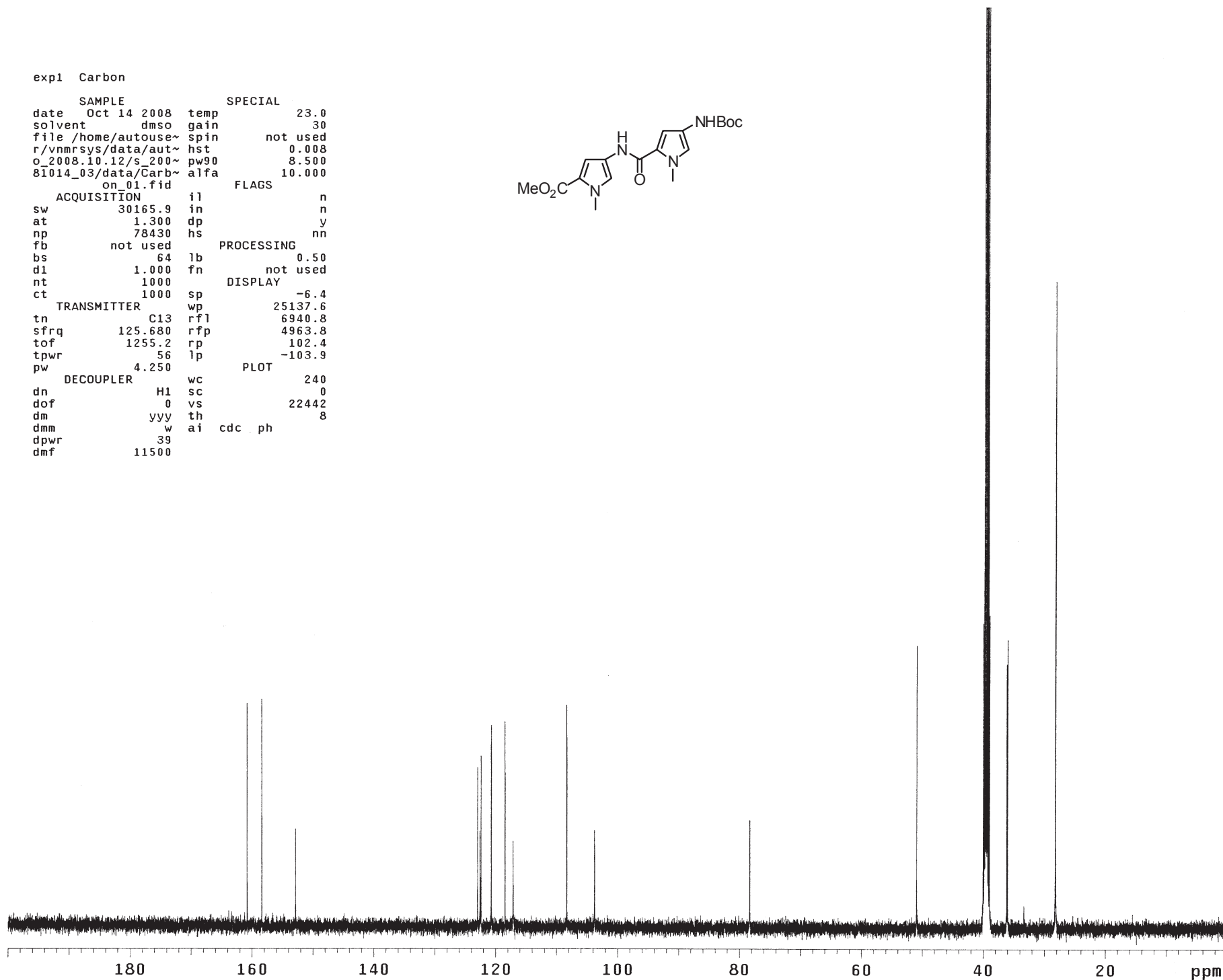
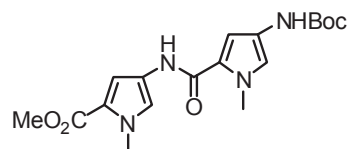
```
SAMPLE          SPECIAL
date   Oct 14 2008  temp      23.0
solvent dmsd         gain     not used
file   /home/autouse~  spin     not used
r/vnmr~ /data/aut~    hst      0.008
o_2008.10.12/s_200~  pw90    9.900
81014_03/data/Prot~  alfa    6.600
on_01.fid
ACQUISITION     il      n
sw      8000.0    in      n
at      2.048    dp      y
np      32762    hs      nn
fb      not used
bs      32       lb      0.20
ss      2        fn      65536
di      1.000    DISPLAY
nt      16       sp      -1.9
ct      16       wp      5995.1
TRANSMITTER     rfl      2248.8
tn      H1      rfp      1244.4
sfrq    499.772  rp      39.3
tof     499.6    lp      3.7
tpwr    61
pw      4.950    PLOT
DECOUPLER       wc      240
dn      C13     sc      0
dof     0       vs      49
dm      nnn     th      4
dmm     c       ai    cdc ph
dpwr    35
dmf     32258
```



expl Carbon

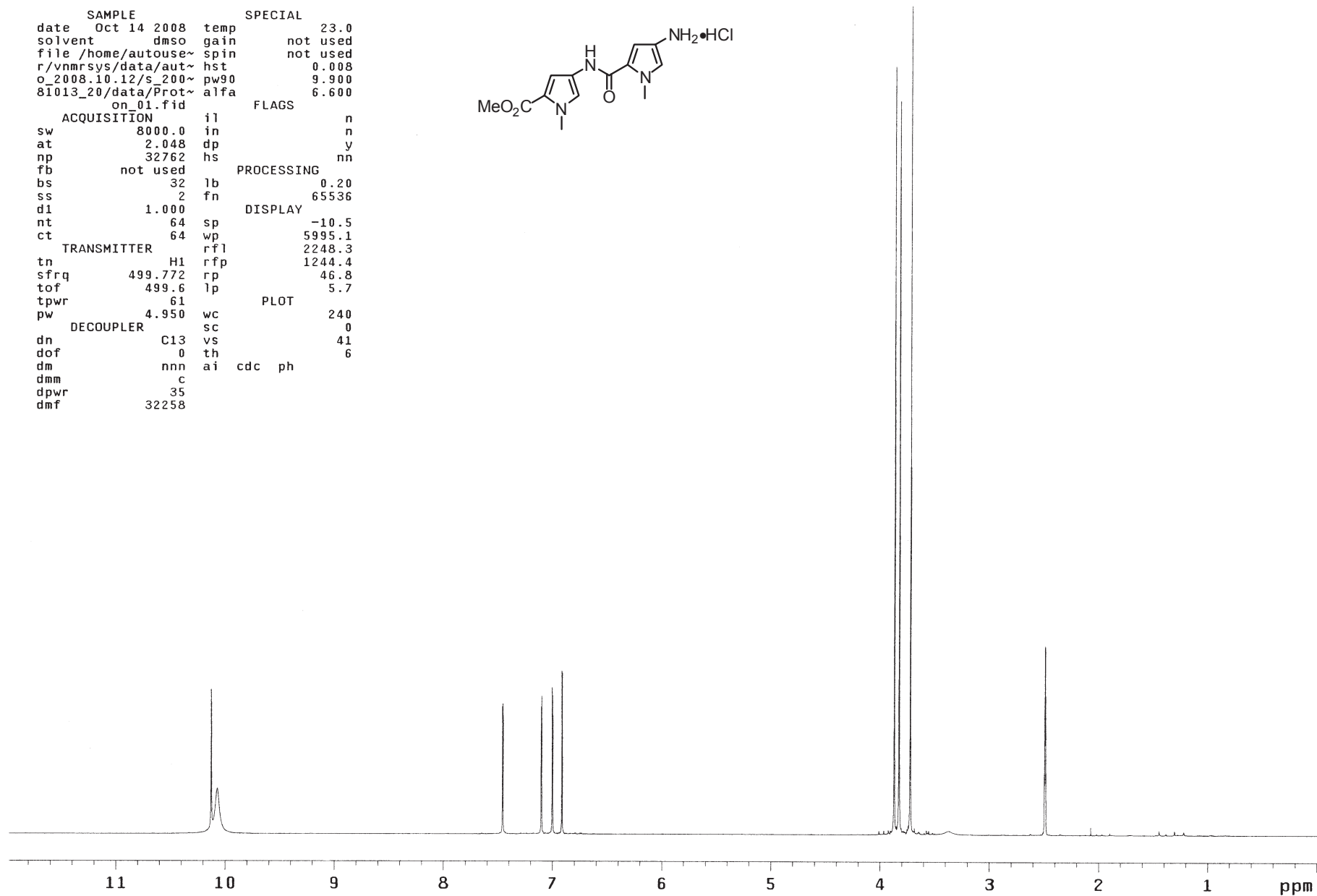
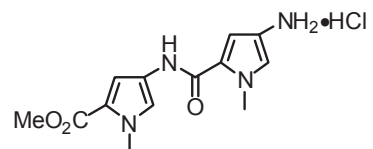
```
SAMPLE SPECIAL
date Oct 14 2008 temp 23.0
solvent dms0 gain 30
file /home/autouse~ spin not used
r/vnmr/sys/data/aut~ hst 0.008
o_2008.10.12/s_200~ pw90 8.500
81014_03/data/Carb~ alfa 10.000
on_01.fid
ACQUISITION i1 n
sw 30165.9 in n
at 1.300 dp y
np 78430 hs nn
fb not used
bs 64 lb 0.50
d1 1.000 fn not used
nt 1000
ct 1000
TRANSMITTER
tn C13
sfrq 125.680
tof 1255.2
tpwr 56
pw 4.250
DECOUPLER
dn H1
dof 0
dm vvy
dmm w
dpwr 39
dmf 11500
```

```
FLAGS
PROCESSING
DISPLAY
PLOT
```



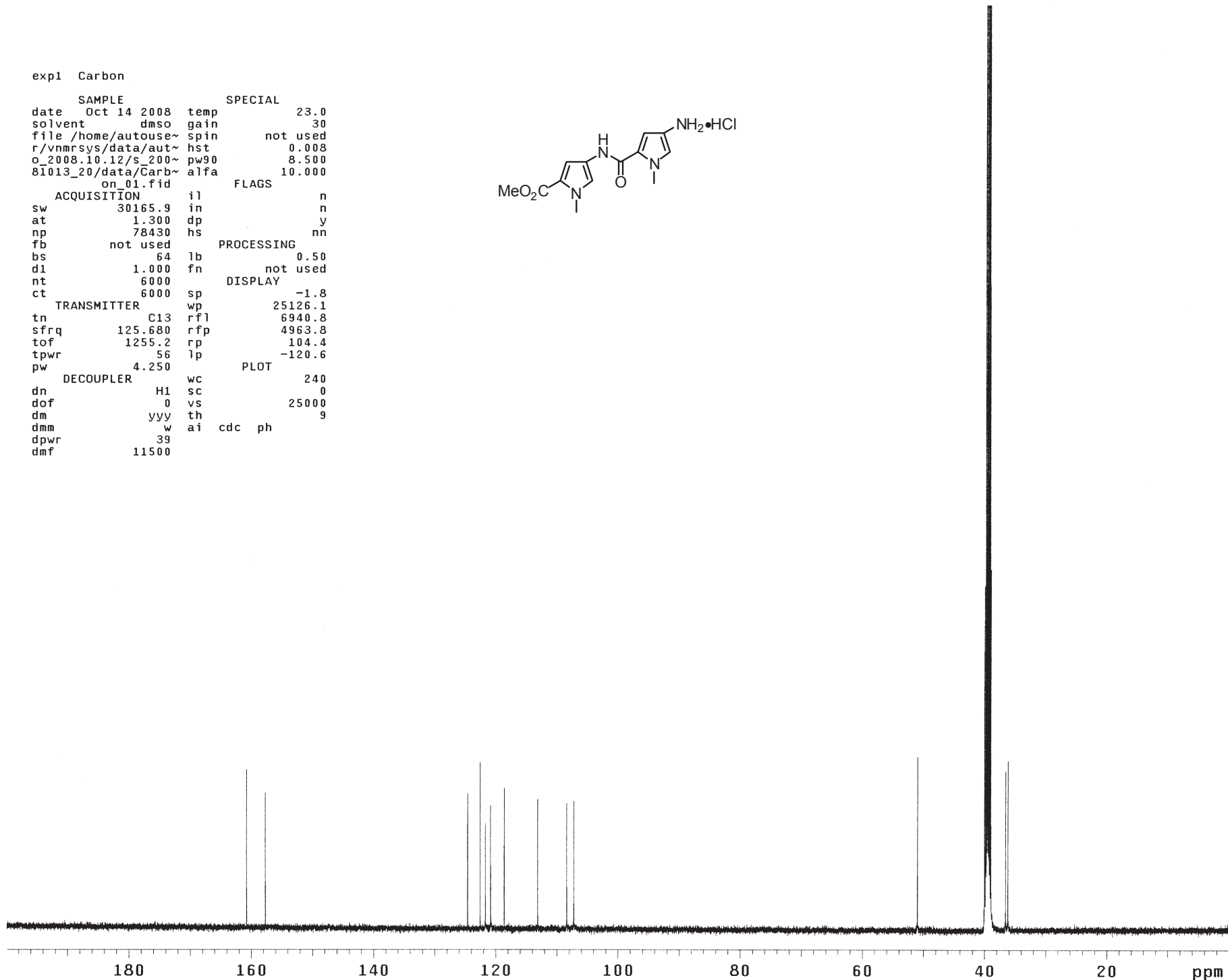
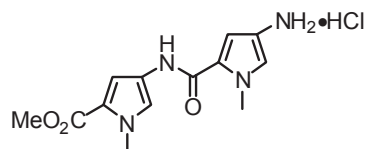
exp1 Proton

SAMPLE SPECIAL
date Oct 14 2008 temp 23.0
solvent dms0 gain not used
file /home/autouse~ spin not used
r/vnmrSYS/data/aut~ hst 0.008
o_2008.10.12/s_200~ pw90 9.900
81013_20/data/Prot~ alfa 6.600
on_01.fid
ACQUISITION il FLAGS n
sw 8000.0 in n
at 2.048 dp y
np 32762 hs nn
fb not used
bs 32 lb PROCESSING 0.20
ss 2 fn 65536
d1 1.000 DISPLAY
nt 64 sp -10.5
ct 64 wp 5995.1
TRANSMITTER H1 rfl 2248.3
tn H1 rfp 1244.4
sfrq 499.772 rp 46.8
tof 499.6 lp 5.7
tpwr 61 PLOT
pw 4.950 wc 240
DECOUPLER C13 sc 0
dn C13 vs 41
dof 0 th 6
dm nnn ai cdc ph
dmm c
dpwr 35
dmf 32258



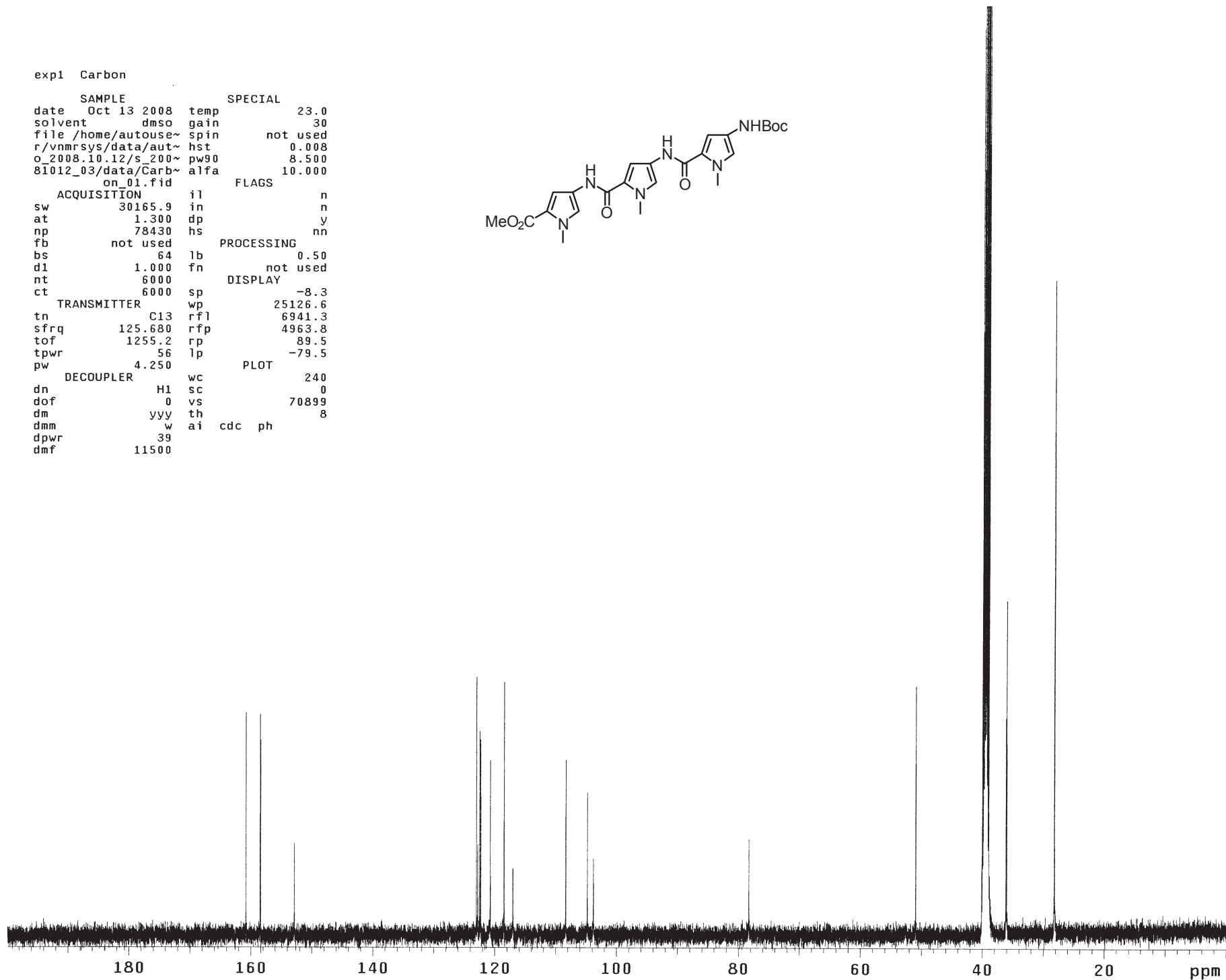
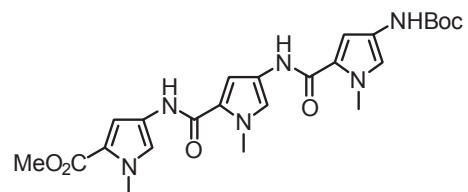
exp1 Carbon

```
SAMPLE SPECIAL
date Oct 14 2008 temp 23.0
solvent dms0 gain 30
file /home/autouse~ spin not used
r/vnmrsys/data/aut~ hst 0.008
o_2008.10.12/s_200~ pw90 8.500
81013_20/data/Carb~ alfa 10.000
on_01.fid
ACQUISITION il n
sw 30165.9 in n
at 1.300 dp y
np 78430 hs nn
fb not used
bs 64 lb 0.50
dl 1.000 fn not used
nt 6000
ct 6000 sp -1.8
TRANSMITTER wp 25126.1
tn C13 rfl 6940.8
sfrq 125.680 rfp 4963.8
tof 1255.2 rp 104.4
tpwr 56 lp -120.6
pw 4.250
DECOUPLER wc 240
dn H1 sc 0
dof 0 vs 25000
dm yyy th 9
dmm w ai cdc ph
dpwr 39
dmf 11500
```



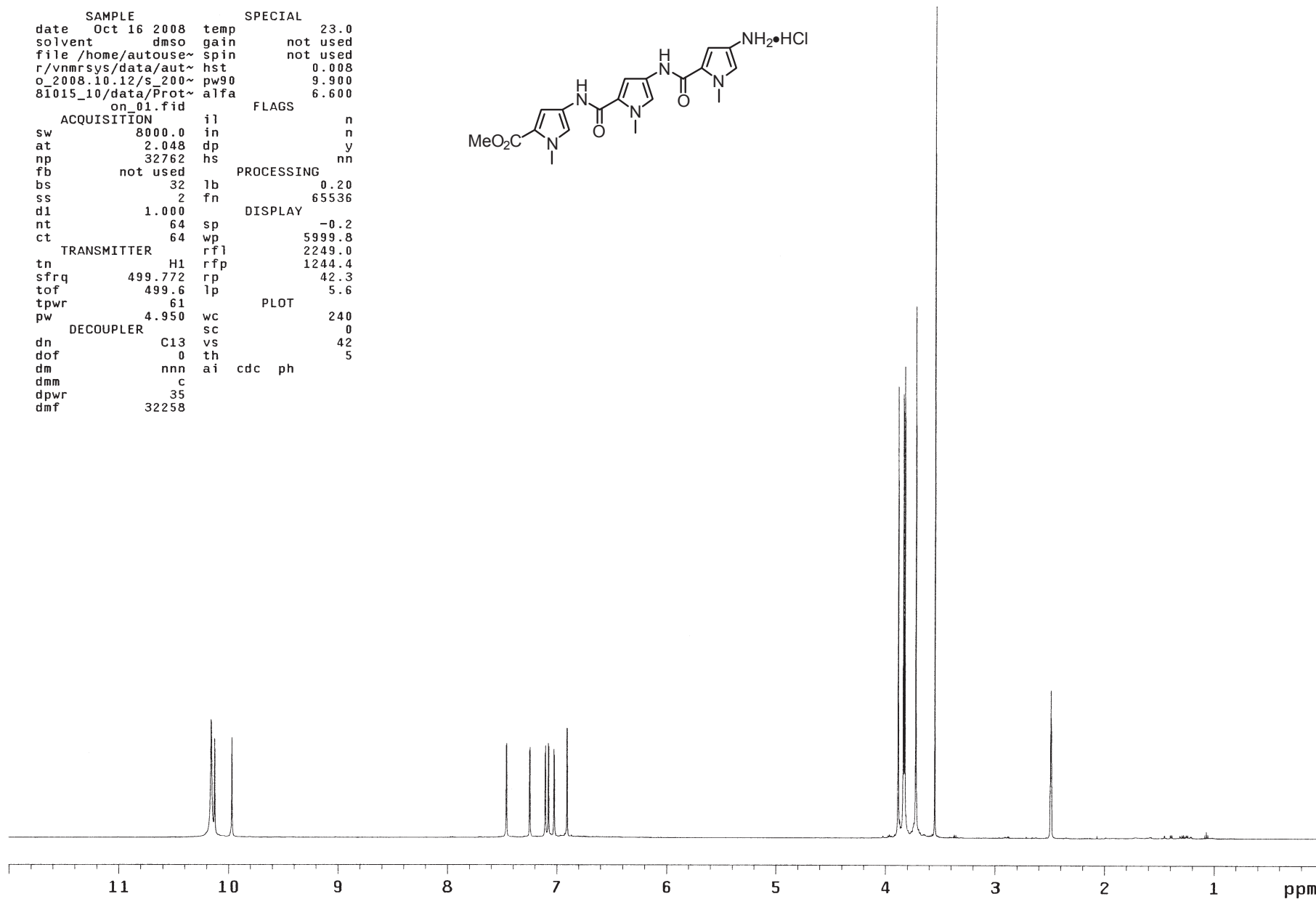
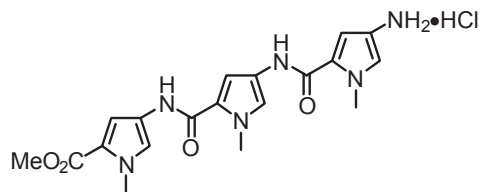
expl Carbon

```
SAMPLE SPECIAL
date Oct 13 2008 temp 23.0
solvent dms0 gain 30
file /home/autouse~ spin not used
r/vnmrsvs/data/aut~ hst 0.008
o_2008.10.12/s_200~ pw90 8.500
81012_03/data/Carb~ alfa 10.000
on_01.fid
ACQUISITION il n
sw 30165.9 in n
at 1.300 dp y
np 78430 hs nn
fb not used
bs 64 lb 0.50
d1 1.000 fn not used
nt 6000
ct 6000 sp -8.3
TRANSMITTER wp 25126.6
tn C13 rfl 6941.3
sfrq 125.680 rfp 4963.8
tof 1255.2 rp 89.5
tpwr 56 lp -79.5
pw 4.250
DECOUPLER wc 240
dn H1 sc 0
dof 0 vs 70899
dm yyy th 8
dmm w ai cdc ph
dpwr 39
dmf 11500
```



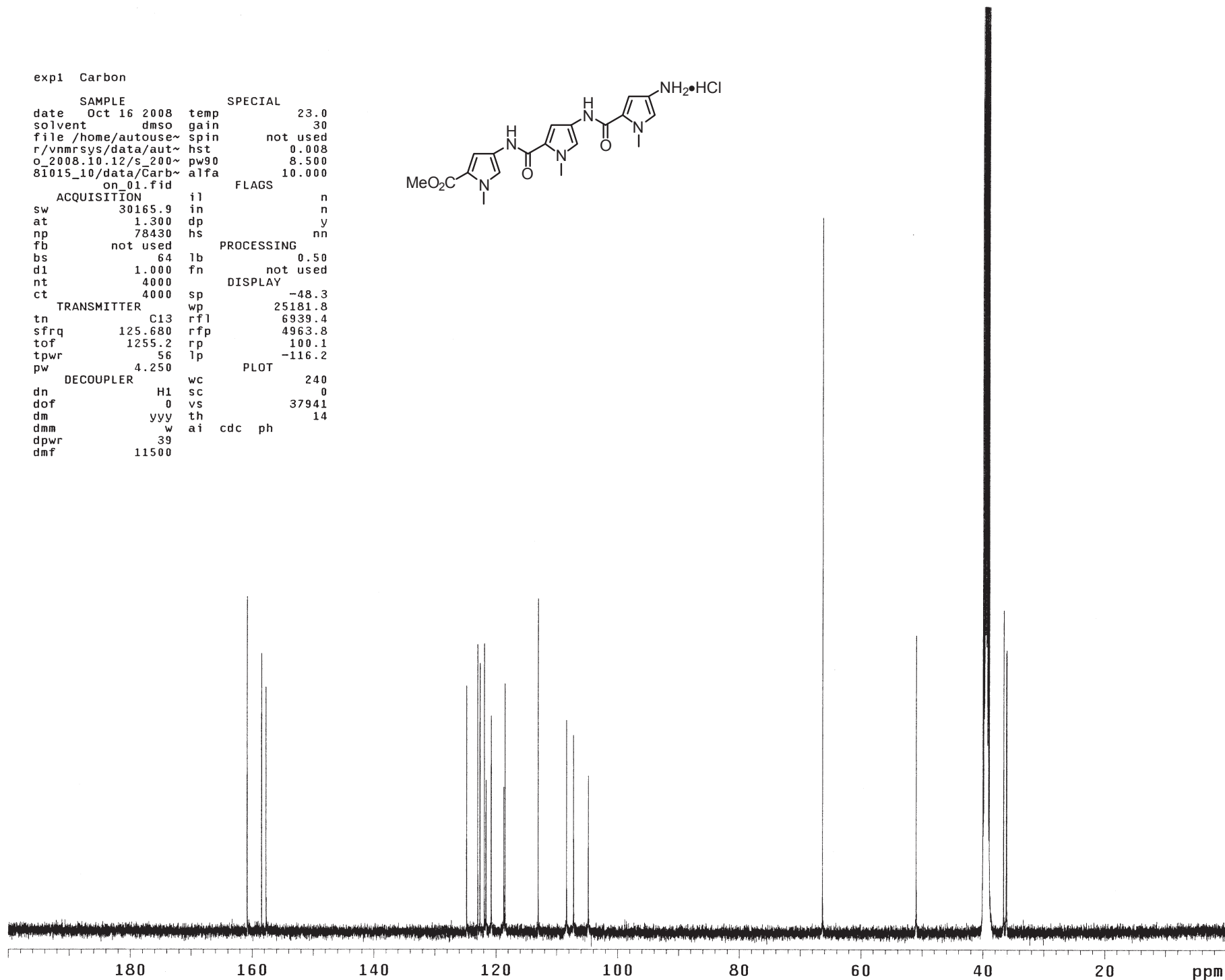
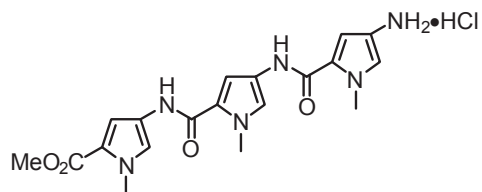
exp1 Proton

```
SAMPLE          SPECIAL
date   Oct 16 2008  temp      23.0
solvent dmsd          gain      not used
file   /home/autouse~ spin      not used
r/vnmr~ r/vnmr~ r/vnmr~ hst      0.008
o_2008.10.12/s_200~ pw90     9.900
81015_10/data/Prot~ alfa     6.600
on_01.fid
ACQUISITION    i1          n
sw             8000.0    in          n
at             2.048    dp          y
np             32762    hs          nn
fb             not used
bs             32       lb          0.20
ss             2       fn          65536
dl             1.000
nt             64       sp          -0.2
ct             64       wp          5999.8
TRANSMITTER    rf1          2249.0
tn             H1       rfp          1244.4
sfrq          499.772   rp          42.3
tof           499.6    lp          5.6
tpwr          61
pw            4.950    wc          240
DECOUPLER     sc          0
dn            C13      vs          42
dof           0       th          5
dm            nnn     ai cdc ph
dmm           c
dpwr          35
dmf           32258
```



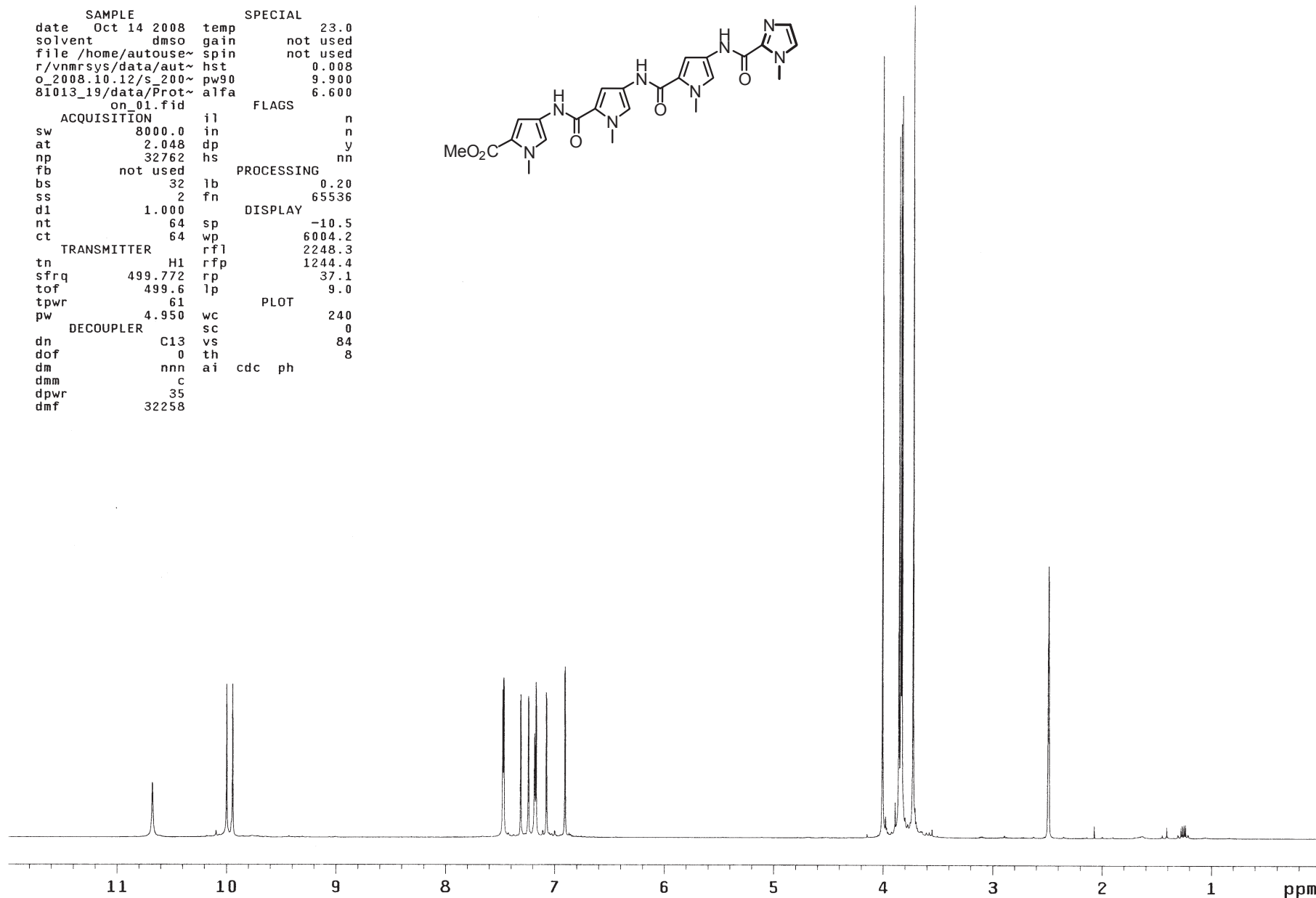
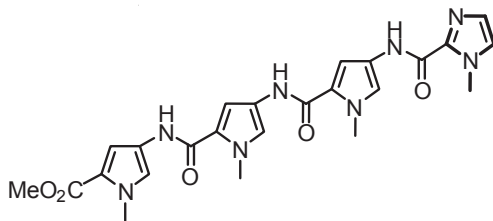
exp1 Carbon

```
SAMPLE SPECIAL
date Oct 16 2008 temp 23.0
solvent dms0 gain 30
file /home/autouse~ spin not used
r/vnmrSYS/data/aut~ hst 0.008
o_2008.10.12/s_200~ pw90 8.500
81015_10/data/Carb~ alfa 10.000
on_01.fid
ACQUISITION FLAGS
sw 30165.9 in n
at 1.300 dp y
np 78430 hs nn
fb not used
bs 64 lb 0.50
d1 1.000 fn not used
nt 4000
ct 4000
TRANSMITTER DISPLAY
tn C13 rfl 25181.8
sfrq 125.680 rfp 6939.4
tof 1255.2 rp 4963.8
tpwr 56 lp 100.1
pw 4.250 l p -116.2
DECOUPLER PLOT
dn H1 wc 240
dof 0 sc 0
dm yyy vs 37941
dmm w th 14
dpwr 39 ai cdc ph
dmf 11500
```



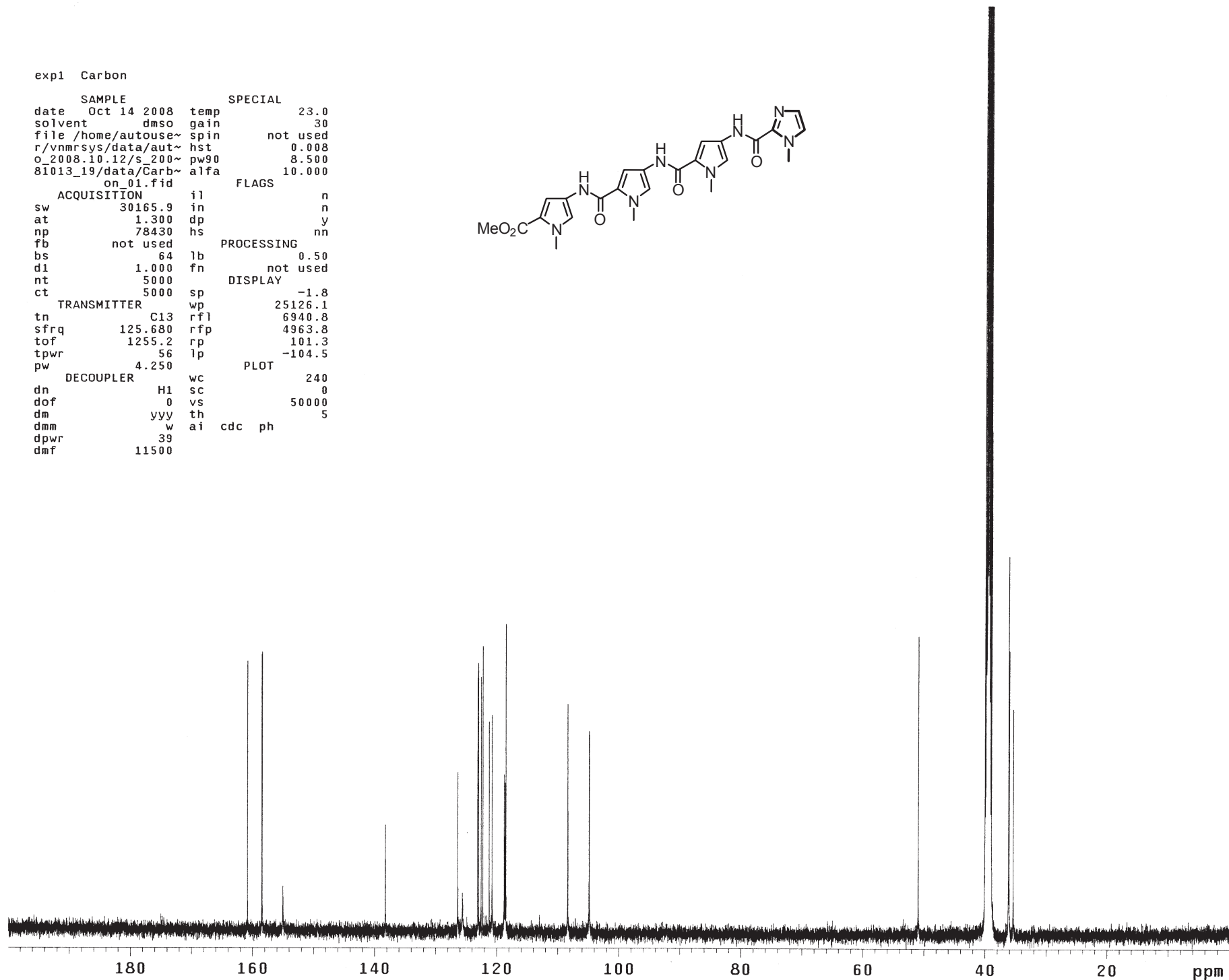
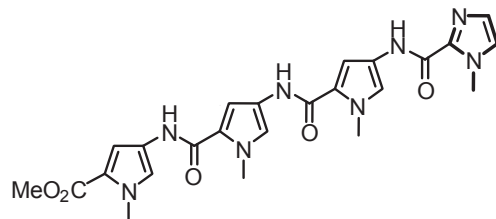
exp1 Proton

SAMPLE		SPECIAL	
date	Oct 14 2008	temp	23.0
solvent	dmsd	gain	not used
file	/home/autouse~	spin	not used
r/vnmr	sys/data/aut~	hst	0.008
o_2008.10.12/s_200~		pw90	9.900
81013_19/data/Prot~		alfa	6.600
on_01.fid		FLAGS	
ACQUISITION		il	n
sw	8000.0	in	n
at	2.048	dp	y
np	32762	hs	nn
fb	not used	PROCESSING	
bs	32	lb	0.20
ss	2	fn	65536
dl	1.000	DISPLAY	
nt	64	sp	-10.5
ct	64	wp	6004.2
TRANSMITTER		rfl	2248.3
tn	H1	rfl	1244.4
sfrq	499.772	rp	37.1
tof	499.6	lp	9.0
tpwr	61	PLOT	
pw	4.950	wc	240
DECOUPLER		sc	0
dn	C13	vs	84
dof	0	th	8
dm	nnn	ai	cdc ph
dmm	c		
dpwr	35		
dmf	32258		



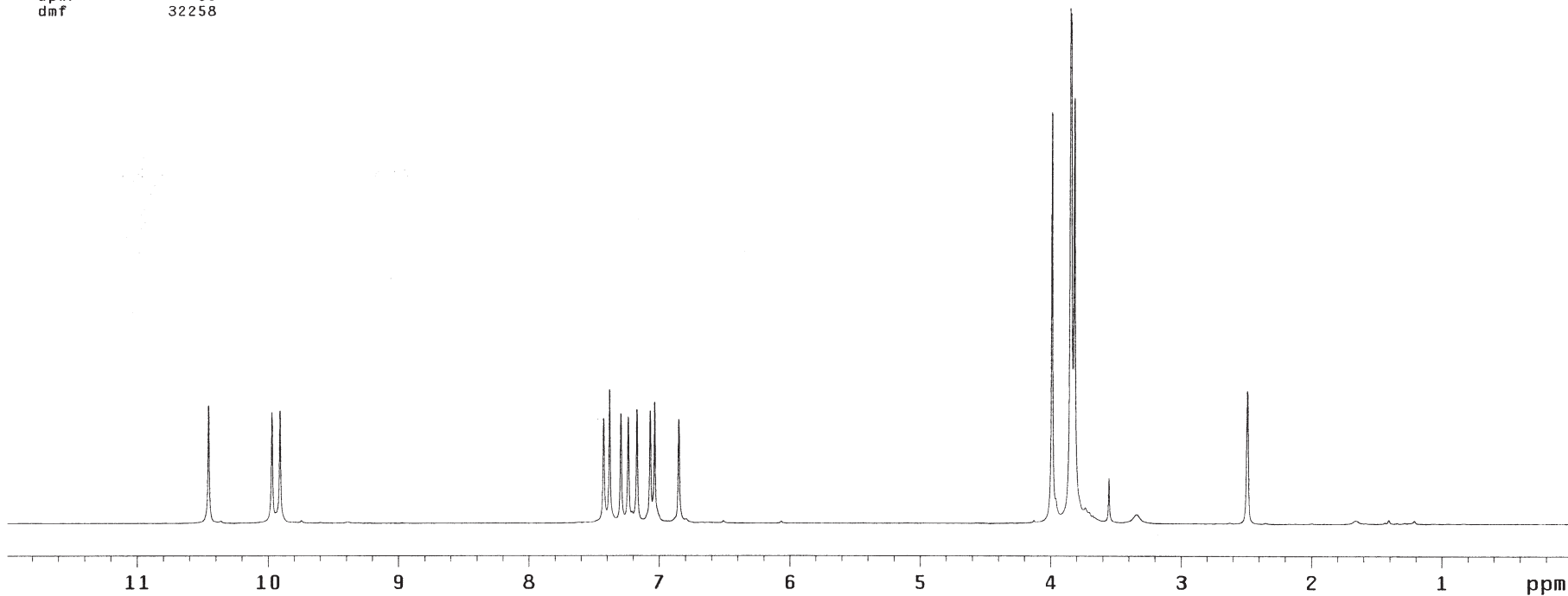
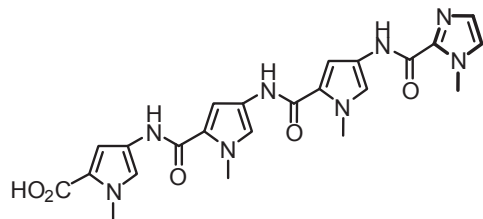
exp1 Carbon

```
SAMPLE SPECIAL
date Oct 14 2008 temp 23.0
solvent dmsd gain 30
file /home/autouse~ spin not used
r/vnmrsvs/data/aut~ hst 0.008
o_2008.10.12/s_200~ pw90 8.500
81013_19/data/Carb~ alfa 10.000
on_01.fid
ACQUISITION FLAGS
sw 30165.9 in n
at 1.300 dp y
np 78430 hs nn
fb not used
bs 64 lb 0.50
d1 1.000 fn not used
nt 5000
ct 5000 sp -1.8
TRANSMITTER wp 25126.1
tn C13 rfl 6940.8
sfrq 125.680 rfp 4963.8
tof 1255.2 rp 101.3
tpwr 56 lp -104.5
pw 4.250
DECOUPLER wc 240
dn H1 sc 0
dof 0 vs 50000
dm yyy th 5
dmm w ai cdc ph
dpwr 39
dmf 11500
```



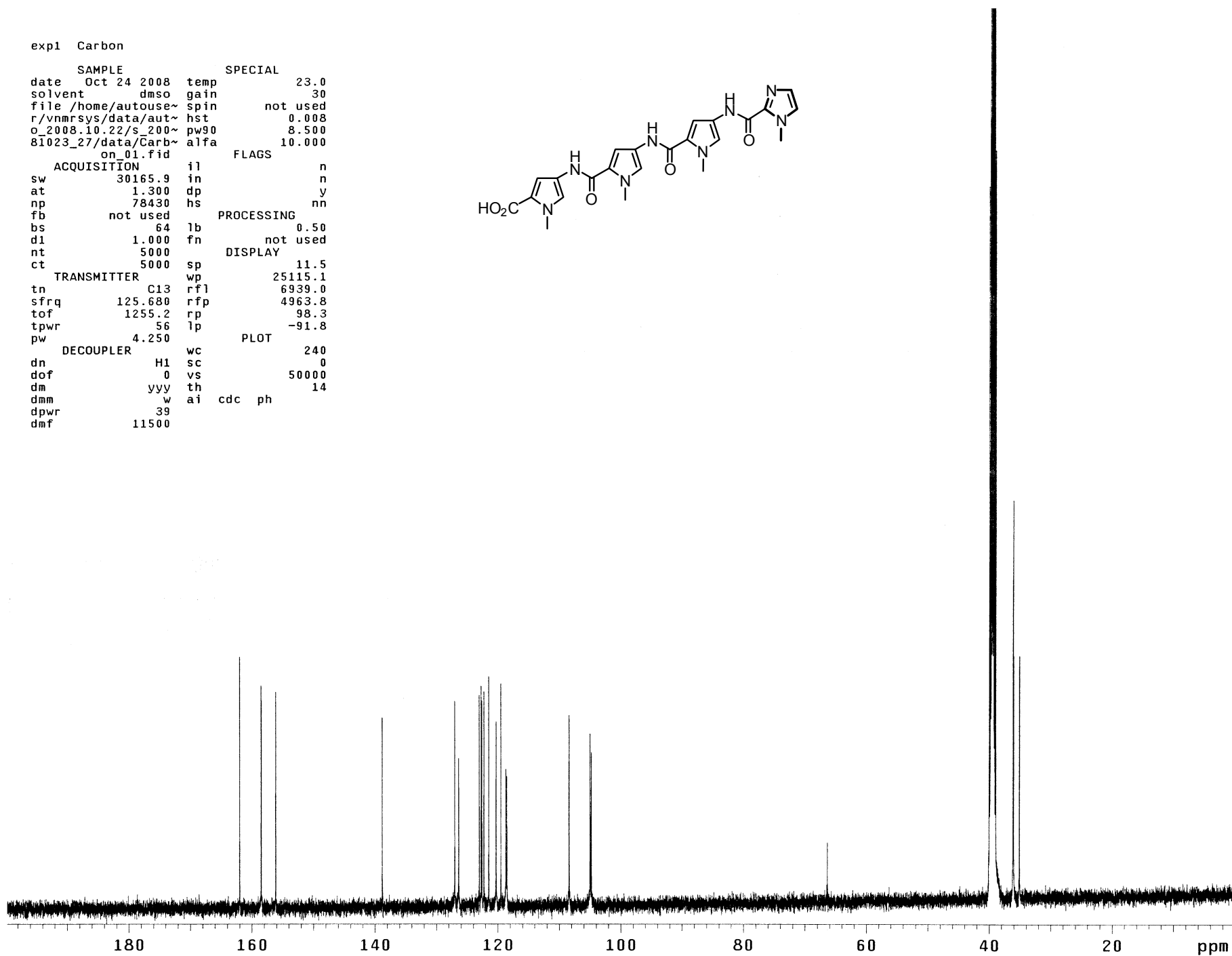
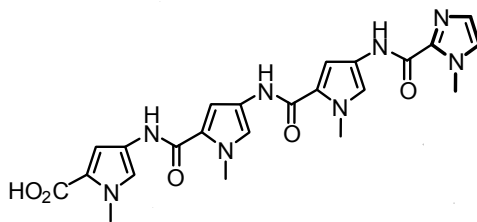
exp1 Proton

```
SAMPLE          SPECIAL
date Oct 24 2008 temp          23.0
solvent dms0 gain          not used
file /home/autouse~ spin          not used
r/vnmrSYS/data/aut~ hst          0.008
o_2008.10.22/s_200~ pw90         9.900
81023_27/data/Prot~ alfa         6.600
on_01.fid
ACQUISITION    i1          n
sw 8000.0      in          n
at 2.048      dp          y
np 32762      hs          nn
fb not used
bs 32         lb          0.20
ss 2          fn          65536
dl 1.000     DISPLAY
nt 32        sp          -3.9
ct 32        wp          5999.8
TRANSMITTER    rfl          2248.3
tn H1        rfp          1244.4
sfrq 499.772 rp          45.8
tof 499.6    lp          7.2
tpwr 61      PLOT
pw 4.950    wc          240
DECOUPLER     sc          0
dn C13       vs          100
dof 0        th          12
dm nnn       ai cdc ph
dmm c
dpwr 35
dmf 32258
```



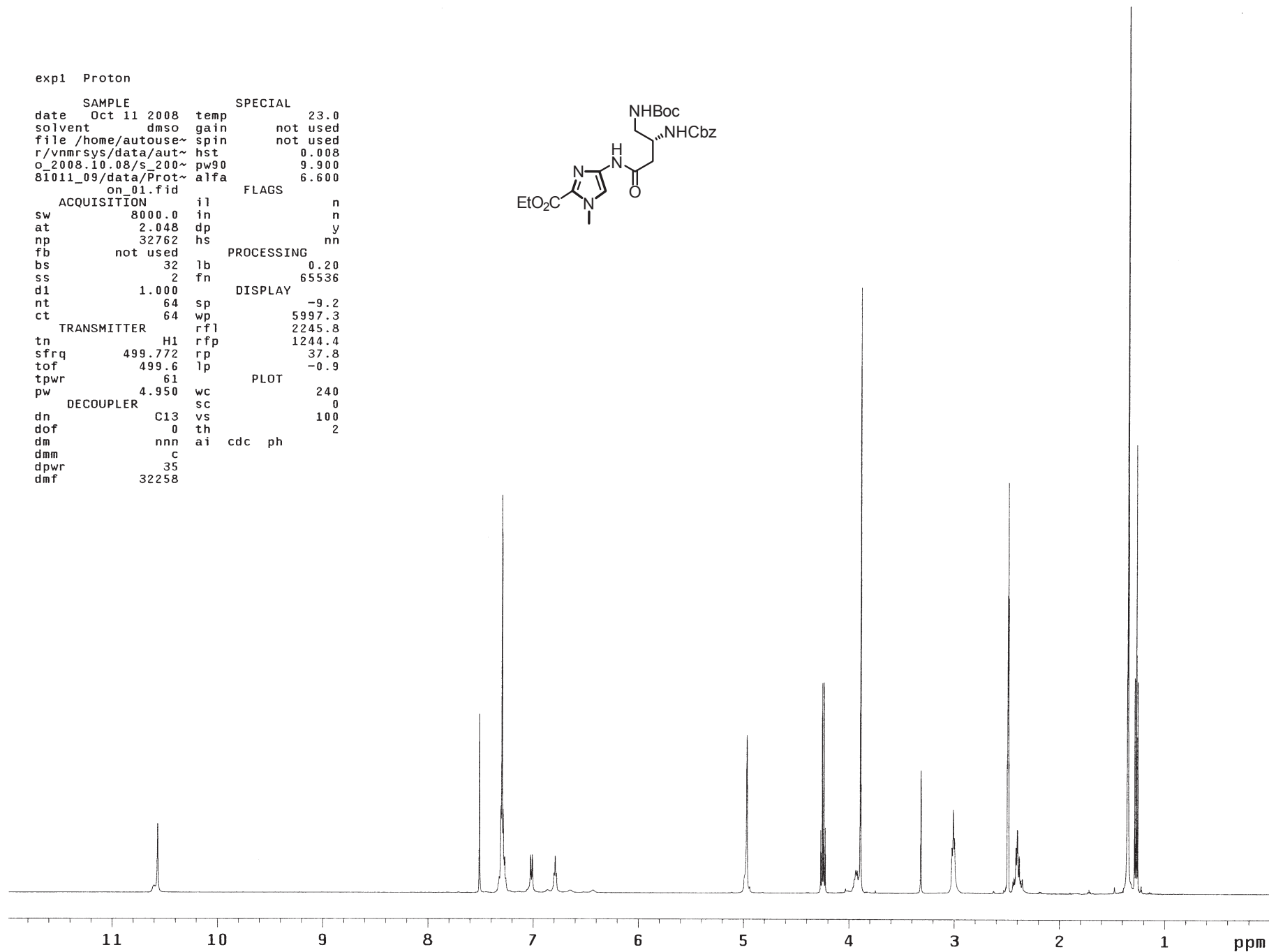
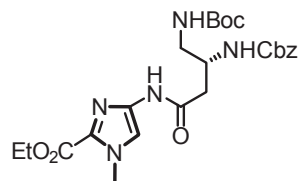
exp1 Carbon

```
SAMPLE SPECIAL
date Oct 24 2008 temp 23.0
solvent dms0 gain 30
file /home/autouse~ spin not used
r/vnmr sys/data/aut~ hst 0.008
o_2008.10.22/s_200~ pw90 8.500
8I023_27/data/Carb~ alfa 10.000
on_01.fid
ACQUISITION FLAGS
sw 30165.9 il n
at 1.300 in n
np 78430 dp y
fb not used hs nn
bs 64 lb 0.50
d1 1.000 fn not used
nt 5000 DISPLAY
ct 5000 sp 11.5
TRANSMITTER wp 25115.1
tn C13 rfl 6939.0
sfrq 125.680 rfp 4963.8
tof 1255.2 rp 98.3
tpwr 56 lp -91.8
pw 4.250 PLOT
DECOUPLER wc 240
dn H1 sc 0
dof 0 vs 50000
dm yyy th 14
dmm w ai cdc ph
dpwr 39
dmf 11500
```



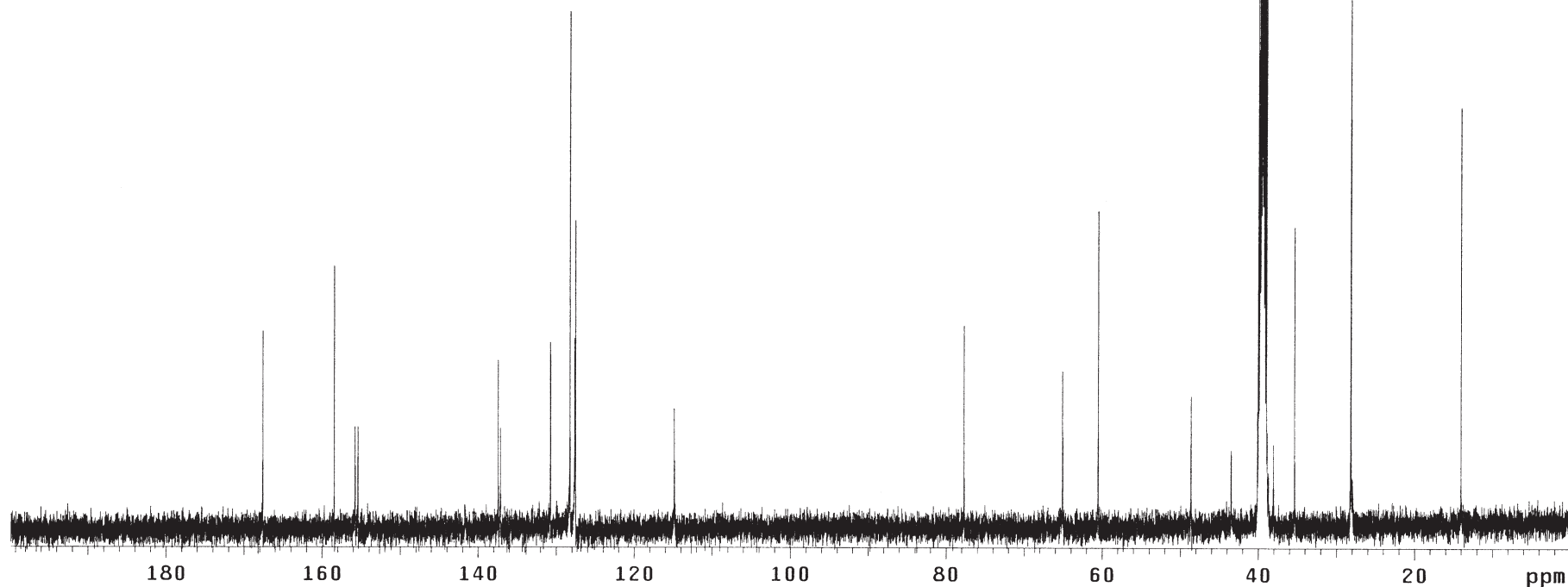
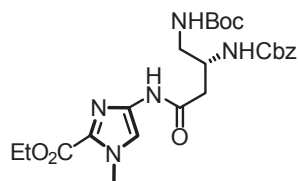
exp1 Proton

```
SAMPLE          SPECIAL
date Oct 11 2008 temp      23.0
solvent dmsd gain      not used
file /home/autouse~ spin    not used
r/vnmrsvs/data/aut~ hst     0.008
o_2008.10.08/s_200~ pw90   9.900
8l011_09/data/Prot~ alfa   6.600
on_01.fid
ACQUISITION     il        n
sw      8000.0 in        n
at      2.048 dp        y
np      32762 hs       nn
fb      not used
bs      32 lb         0.20
ss      2 fn         65536
dl      1.000
nt      64 sp        -9.2
ct      64 wp        5997.3
TRANSMITTER     rfl       2245.8
tn      H1 rfp       1244.4
sfrq    499.772 rp      37.8
tof     499.6 lp      -0.9
tpwr    61
pw     4.950 wc       240
DECOUPLER      C13 sc       0
dn      0 vs       100
dof     0 th       2
dm      nnn ai cdc ph
dmm     c
dpwr    35
dmf     32258
```



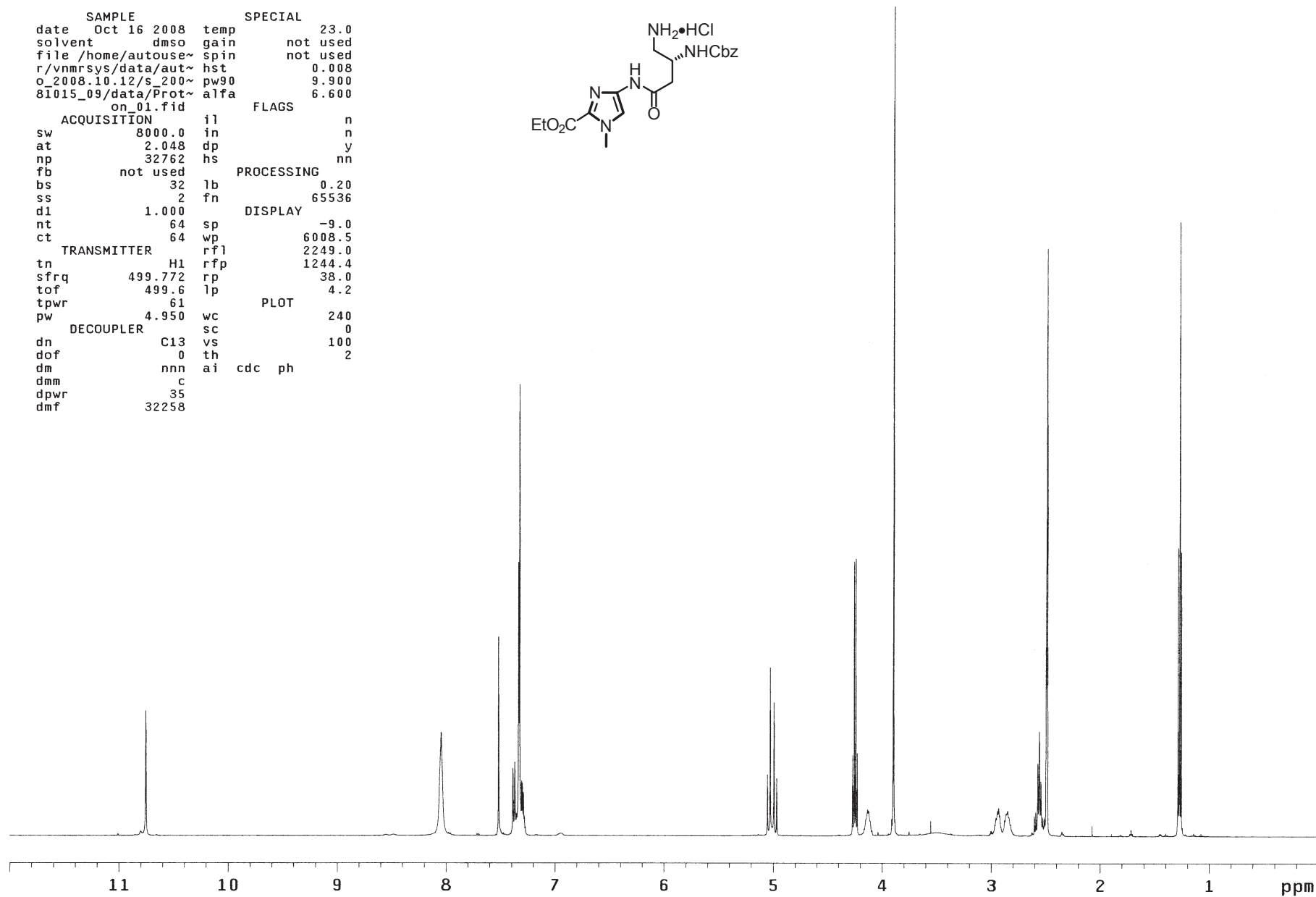
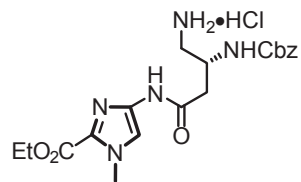
exp1 Carbon

```
SAMPLE SPECIAL
date Oct 13 2008 temp 23.0
solvent dms0 gain 30
file /home/autouse~ spin not used
r/vnmrsys/data/aut~ hst 0.008
o_2008.10.12/s_200~ pw90 8.500
81012_02/data/Carb~ alfa 10.000
on_01.fid
ACQUISITION FLAGS
sw 30165.9 in n
at 1.300 dp y
np 78430 hs nn
fb not used
bs 64 lb 0.50
d1 1.000 fn not used
nt 6000
ct 6000 sp -42.3
TRANSMITTER wp 25159.7
tn C13 rfl 6941.7
sfrq 125.680 rfp 4963.8
tof 1255.2 rp 82.9
tpwr 56 lp -50.2
pw 4.250
DECOUPLER wc 240
dn H1 sc 0
dof 0 vs 82087
dm yyy th 8
dmm w ai cdc ph
dpwr 39
dmf 11500
```



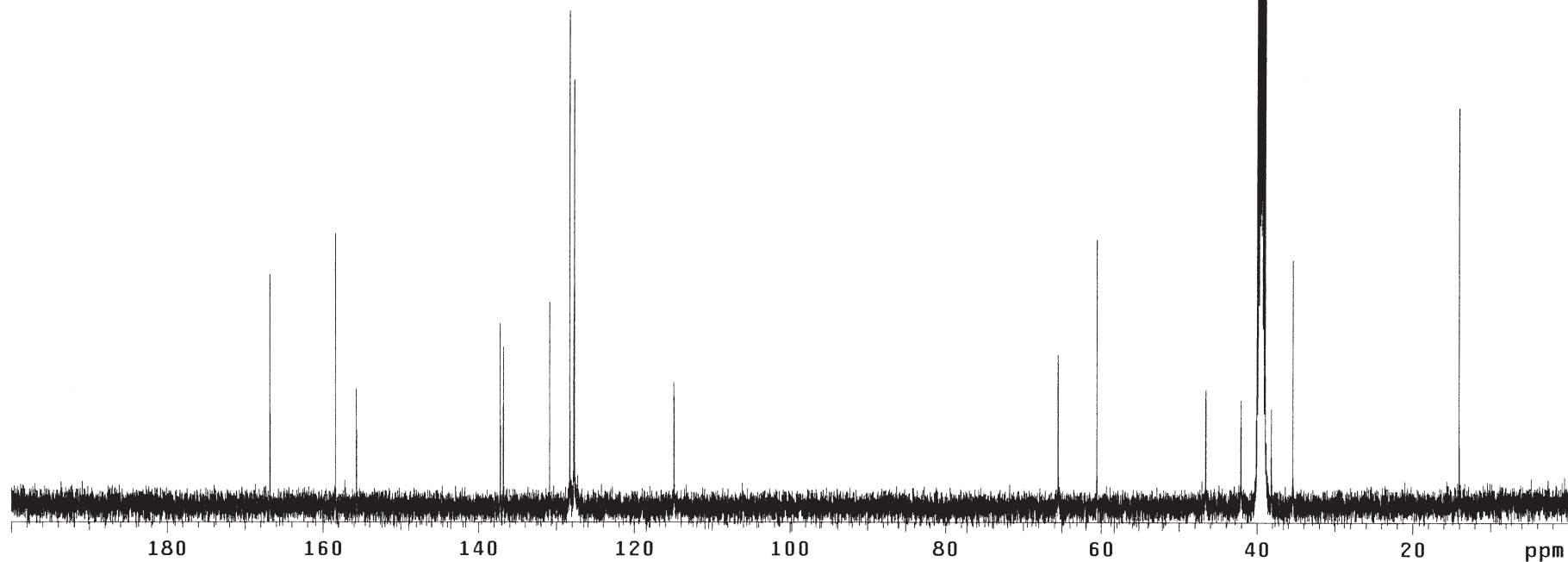
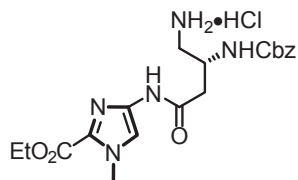
expl Proton

SAMPLE		SPECIAL	
date	Oct 16 2008	temp	23.0
solvent	dms0	gain	not used
file	/home/autouse~	spin	not used
r/vnmr	sys/data/aut~	hst	0.008
o_2008	.10.12/s_200~	pw90	9.900
81015_09	/data/Prot~	alfa	6.600
on_01.fid		FLAGS	
ACQUISITION		il	n
sw	8000.0	in	n
at	2.048	dp	y
np	32762	hs	nn
fb	not used	PROCESSING	
bs	32	lb	0.20
ss	2	fn	65536
d1	1.000	DISPLAY	
nt	64	sp	-9.0
ct	64	wp	6008.5
TRANSMITTER		rfl	2249.0
tn	H1	rfl	1244.4
sfrq	499.772	rp	38.0
tof	499.6	lp	4.2
tpwr	61	PLOT	
pw	4.950	wc	240
DECOUPLER		sc	0
dn	C13	vs	100
dof	0	th	2
dm	nnn	ai	cdc ph
dmm	c		
dpwr	35		
dmf	32258		



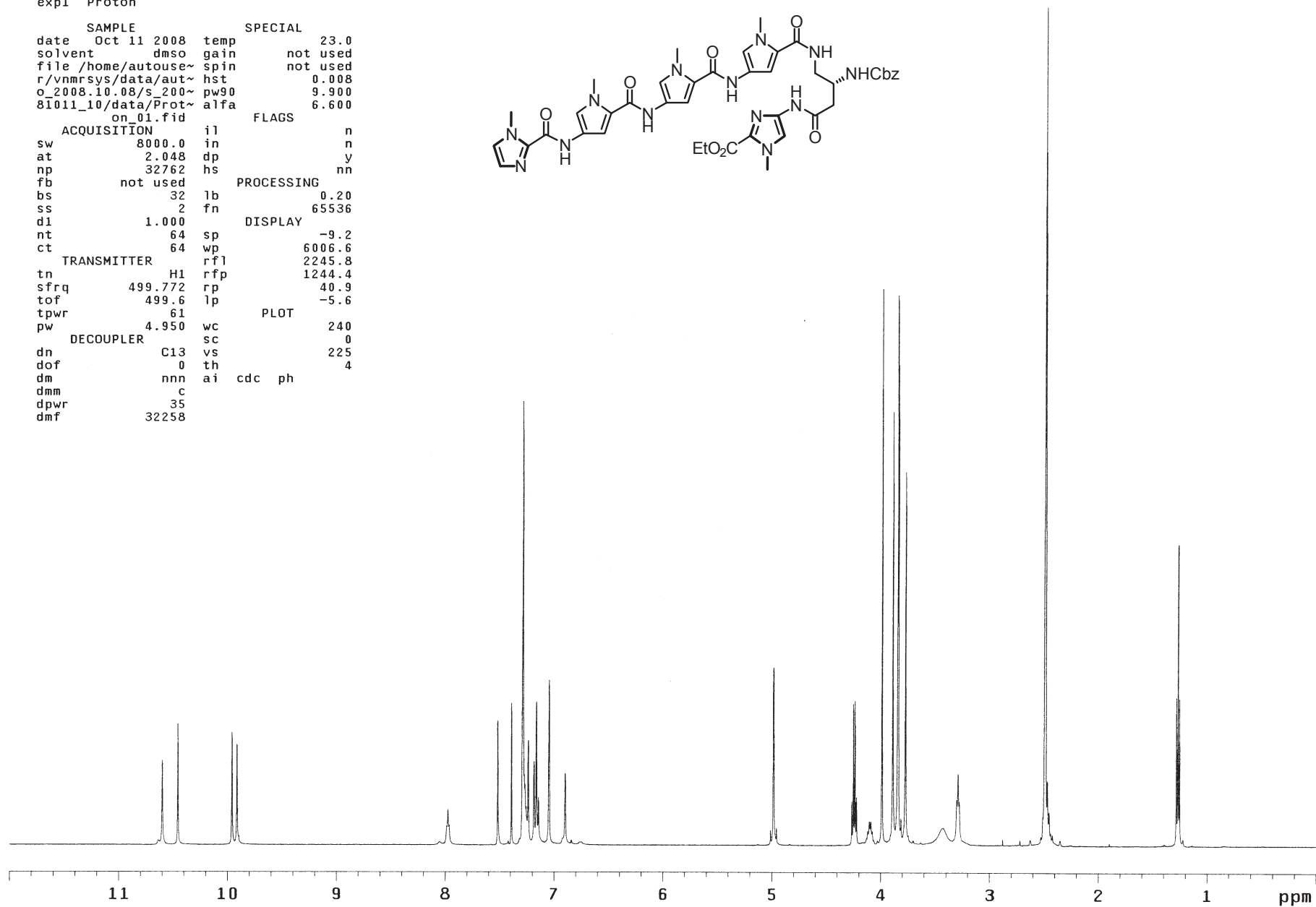
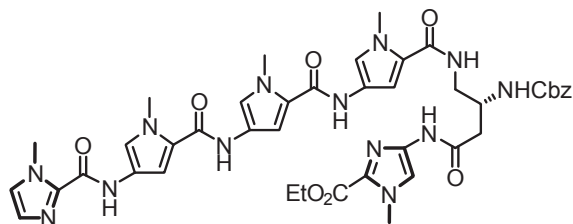
exp1 Carbon

```
SAMPLE SPECIAL
date Oct 16 2008 temp 23.0
solvent dms0 gain 30
file /home/autouse~ spin not used
r/vnmrSYS/data/aut~ hst 0.008
o_2008.10.12/s_200~ pw90 8.500
81015_09/data/Carb~ alfa 10.000
on_01.fid
ACQUISITION i1 n
sw 30165.9 in n
at 1.300 dp y
np 78430 hs nn
fb not used
bs 64 lb PROCESSING 0.50
dl 1.000 fn not used
nt 4000 DISPLAY
ct 4000 sp -50.6
TRANSMITTER wp 25181.8
tn C13 rfl 6941.7
sfrq 125.680 rfp 4963.8
tof 1255.2 rp 98.9
tpwr 56 lp -106.4
pw 4.250 PLOT
DECOUPLER wc 240
dn H1 sc 0
dof 0 vs 65100
dm yyy th 8
dmm w ai cdc ph
dpwr 39
dmf 11500
```



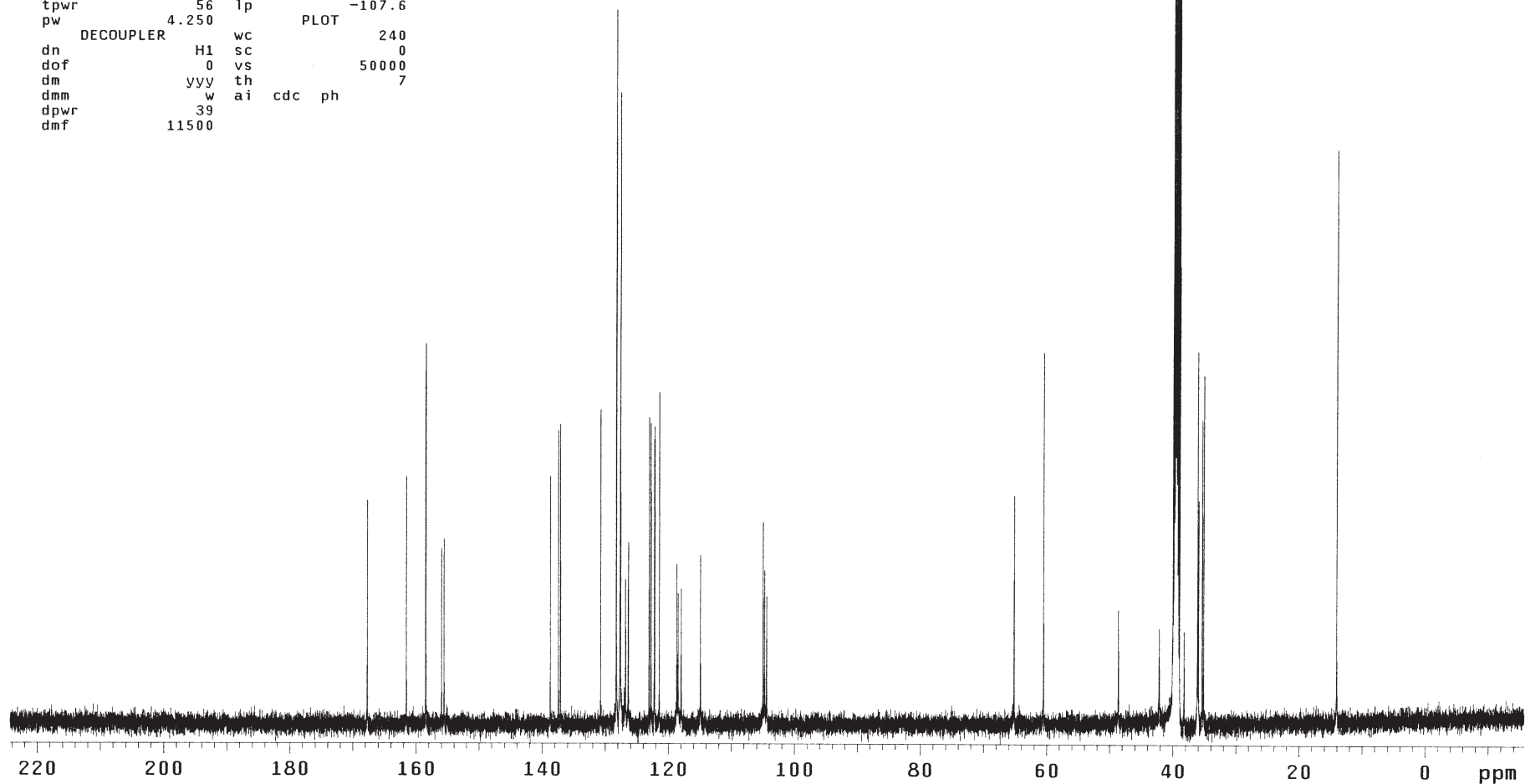
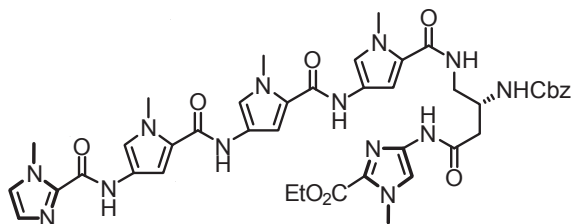
exp1 Proton

```
SAMPLE          SPECIAL
date   Oct 11 2008  temp      23.0
solvent dmsd         gain     not used
file   /home/autouse~  spin     not used
r/vnmr~ /data/aut~  hst      0.008
o_2008.10.08/s_200~  pw90    9.900
81011_10/data/Prot~  alfa    6.600
on_01.fid
ACQUISITION     i1         n
sw             8000.0     in         n
at             2.048     dp         y
np             32762     hs         nn
fb             not used
bs             32        lb         0.20
ss             2        fn         65536
dl             1.000
nt             64        sp         -9.2
ct             64        wp         6006.6
TRANSMITTER     rfl         2245.8
tn             H1        rfp         1244.4
sfrq          499.772    rp         40.9
tof           499.6     lp         -5.6
tpwr          61
pw            4.950
DECOUPLER       wc         240
dn             C13       sc         0
dof            0        vs         225
dm             nnn       th         4
dmm            c        ai         cdc
dpwr           35        ph
dmf           32258
```



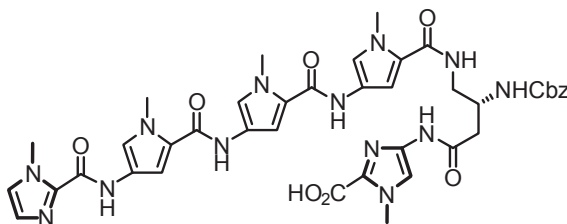
exp1 Carbon

```
SAMPLE SPECIAL
date Oct 12 2008 temp 23.0
solvent dms0 gain 30
file /home/autouse~ spin not used
r/vnmrSYS/data/aut~ hst 0.008
o_2008.10.08/s_200~ pw90 8.500
81011_15/data/Carb~ alfa 10.000
on_01.fid
ACQUISITION FLAGS
sw 30165.9 in n
at 1.300 dp y
np 78430 hs nn
fb not used
bs 64 lb 0.50
d1 1.000 fn not used
nt 4000
ct 4000 sp -1974.6
TRANSMITTER wp 30165.5
tn C13 rfl 6939.0
sfrq 125.680 rfp 4963.8
tof 1255.2 rp 100.0
tpwr 56 lp -107.6
pw 4.250
DECOUPLER PLOT
dn H1 wc 240
dof 0 sc 0
dm yyy th 50000
dmm w ai cdc ph 7
dpwr 39
dmf 11500
```



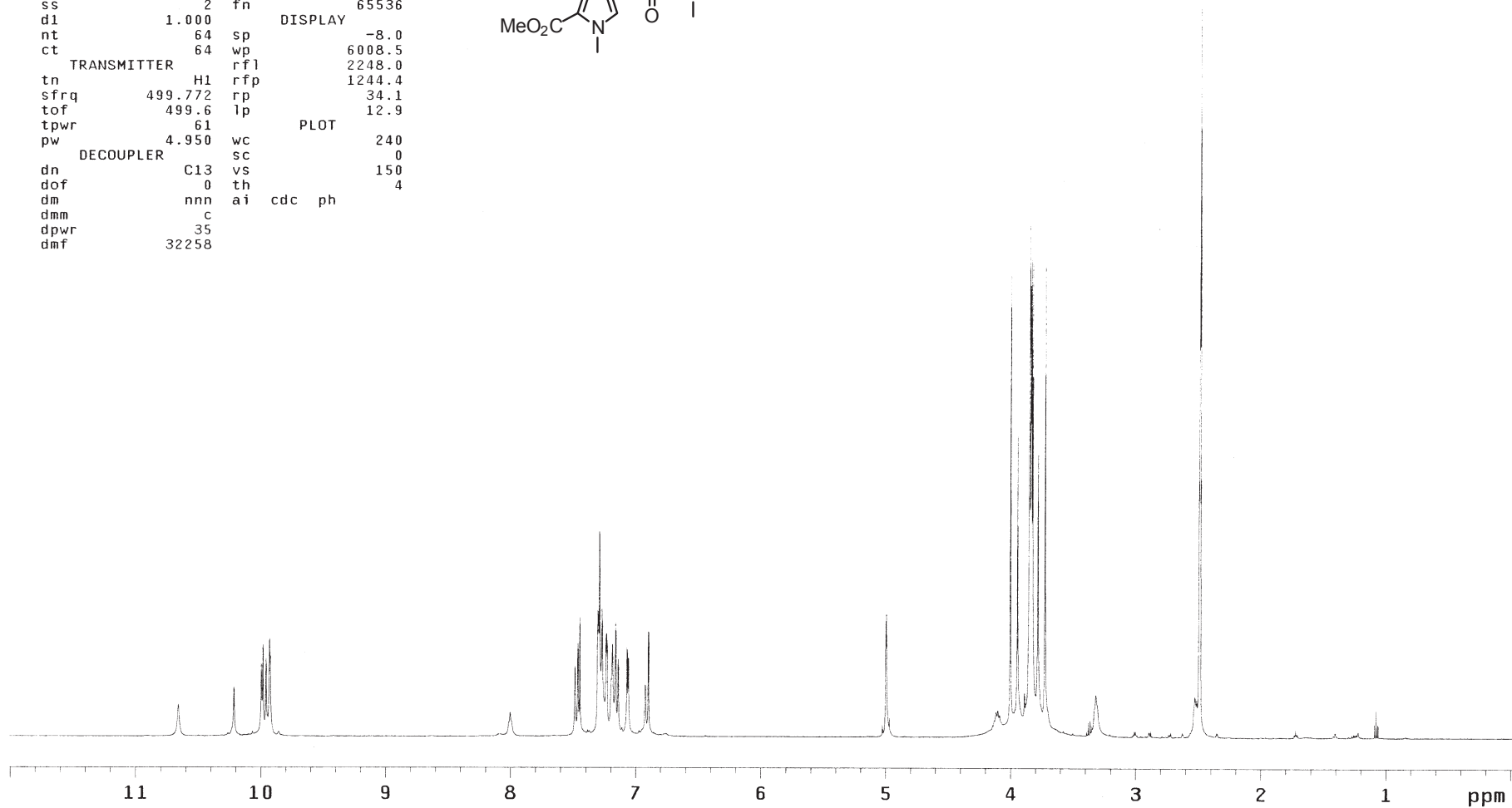
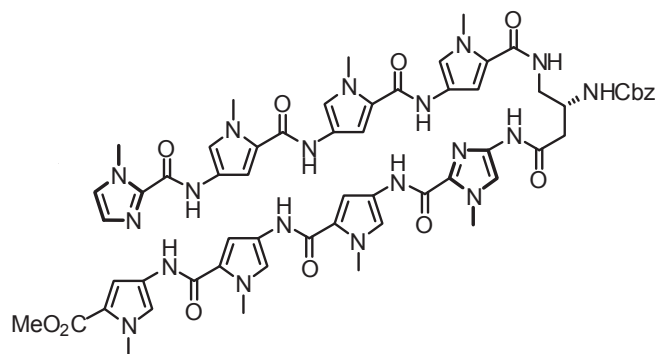
exp1 Proton

SAMPLE		SPECIAL	
date	Oct 11 2008	temp	23.0
solvent	dms0	gain	not used
file	/home/autouse~	spin	not used
r/vnmr	sys/data/aut~	hst	0.008
o_2008	10.08/s_200~	pw90	9.900
8I011_11	/data/Prot~	alfa	6.600
on_01.fid		FLAGS	
ACQUISITION		il	n
sw	8000.0	in	n
at	2.048	dp	y
np	32762	hs	nn
fb	not used	PROCESSING	
bs	32	lb	0.20
ss	2	fn	65536
d1	1.000	DISPLAY	
nt	64	sp	-9.5
ct	64	wp	6006.6
TRANSMITTER		rfl	2246.1
tn	H1	rfp	1244.4
sfrq	499.772	rp	41.8
tof	499.6	lp	-5.2
tpwr	61	PLOT	
pw	4.950	wc	240
DECOUPLER		sc	0
dn	C13	vs	150
dof	0	th	1
dm	nnn	ai	cdc ph
dmm	c		
dpwr	35		
dmf	32258		



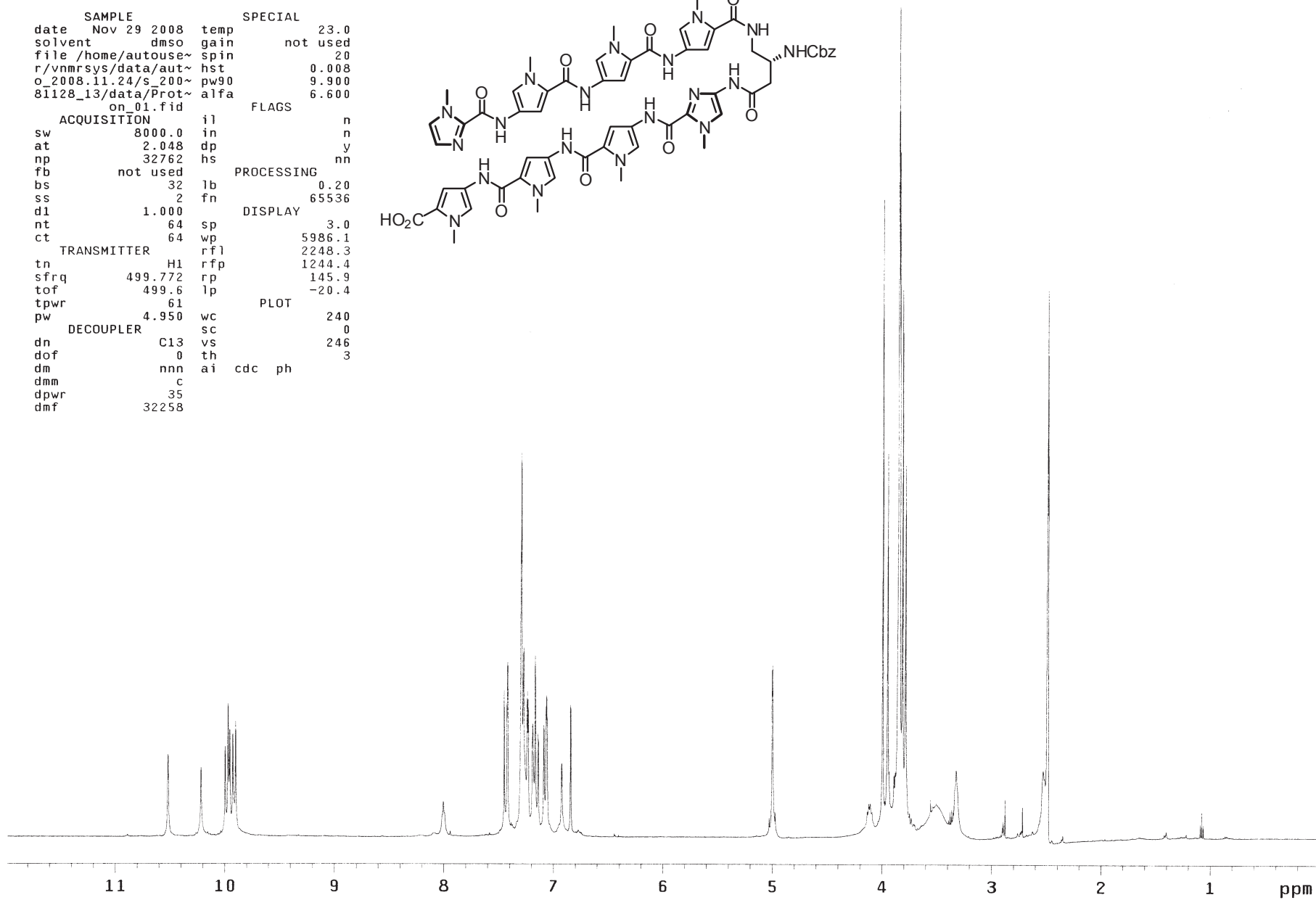
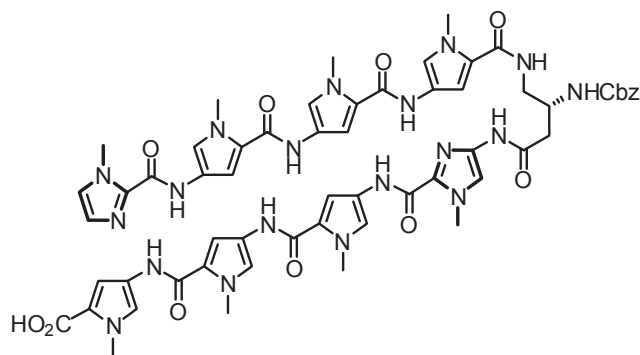
exp1 Proton

SAMPLE		SPECIAL	
date	Nov 3 2008	temp	23.0
solvent	dms	gain	not used
file	/home/autouse~	spin	20
r/vnmr	sys/data/aut~	hst	0.008
o_2008	.10.31/s_200~	pw90	9.900
81102_14	/data/Prot~	alfa	6.600
on_01	.fid	FLAGS	
ACQUISITION		il	n
sw	8000.0	in	n
at	2.048	dp	y
np	32762	hs	nn
fb	not used	PROCESSING	
bs	32	lb	0.20
ss	2	fn	65536
d1	1.000	DISPLAY	
nt	64	sp	-8.0
ct	64	wp	6008.5
TRANSMITTER		rfl	2248.0
tn	H1	rfl	1244.4
sfrq	499.772	rp	34.1
tof	499.6	lp	12.9
tpwr	61	PLOT	
pw	4.950	wc	240
DECOUPLER		sc	0
dn	C13	vs	150
dof	0	th	4
dm	nnn	ai	cdc ph
dmm	c		
dpwr	35		
dmf	32258		



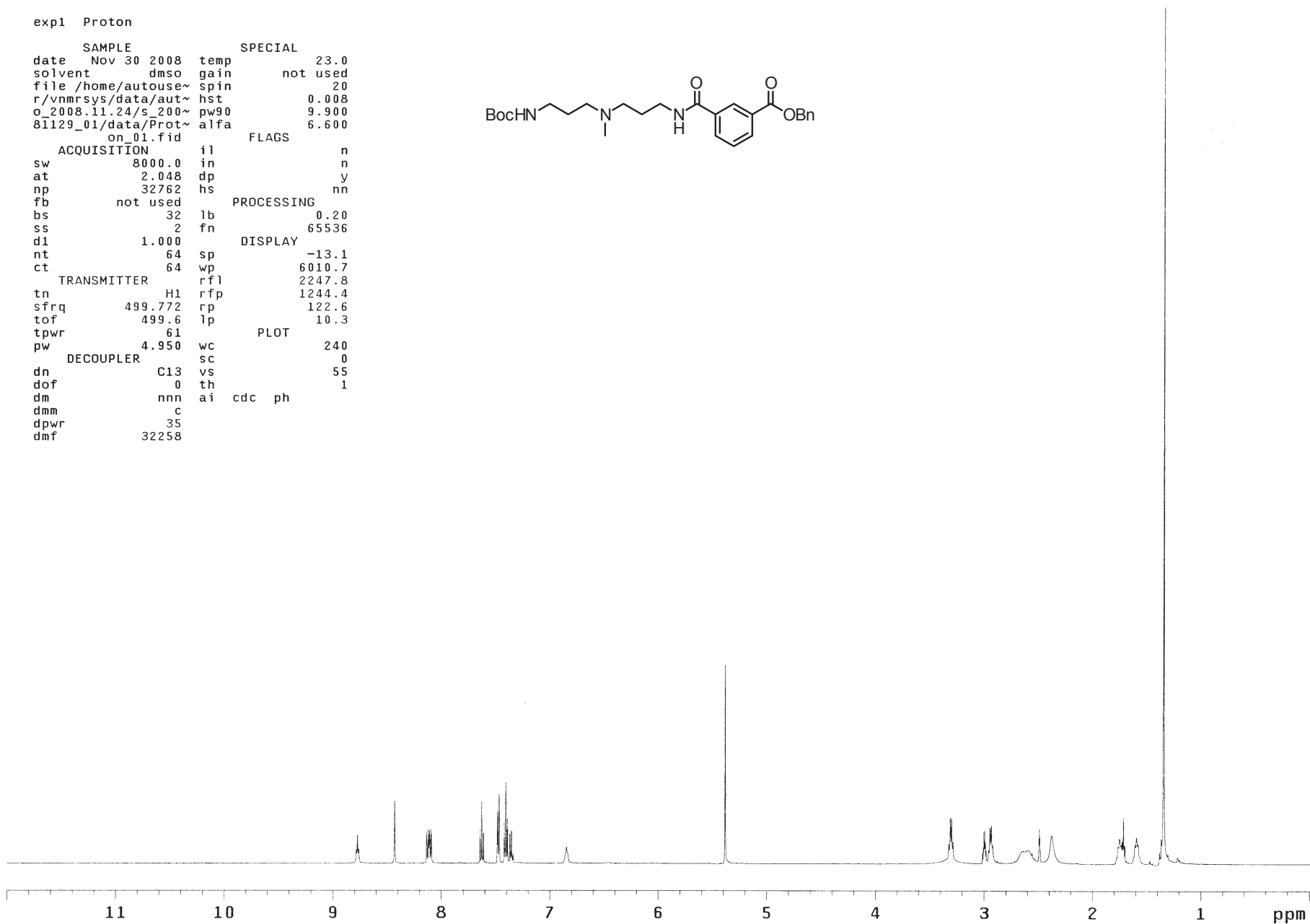
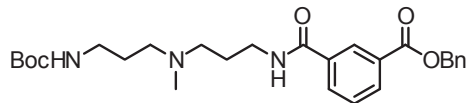
exp1 Proton

SAMPLE		SPECIAL	
date	Nov 29 2008	temp	23.0
solvent	dms	gain	not used
file	/home/autouse~	spin	20
r/vnmr	sys/data/aut~	hst	0.008
o_2008	.11.24/s_200~	pw90	9.900
81128_13	data/Prot~	alfa	6.600
on_01	.fid	FLAGS	
sw	8000.0	il	n
at	2.048	in	n
np	32762	dp	y
fb	not used	hs	nn
bs	32	lb	0.20
ss	2	fn	65536
d1	1.000	DISPLAY	
nt	64	sp	3.0
ct	64	wp	5986.1
tn	H1	rfl	2248.3
sfrq	499.772	rfp	1244.4
tof	499.6	rp	145.9
tpwr	61	lp	-20.4
pw	4.950	PLOT	
dn	C13	wc	240
dof	0	sc	0
dm	nnn	vs	246
dmm	c	th	3
dpwr	35	ai	cdc ph
dmf	32258		



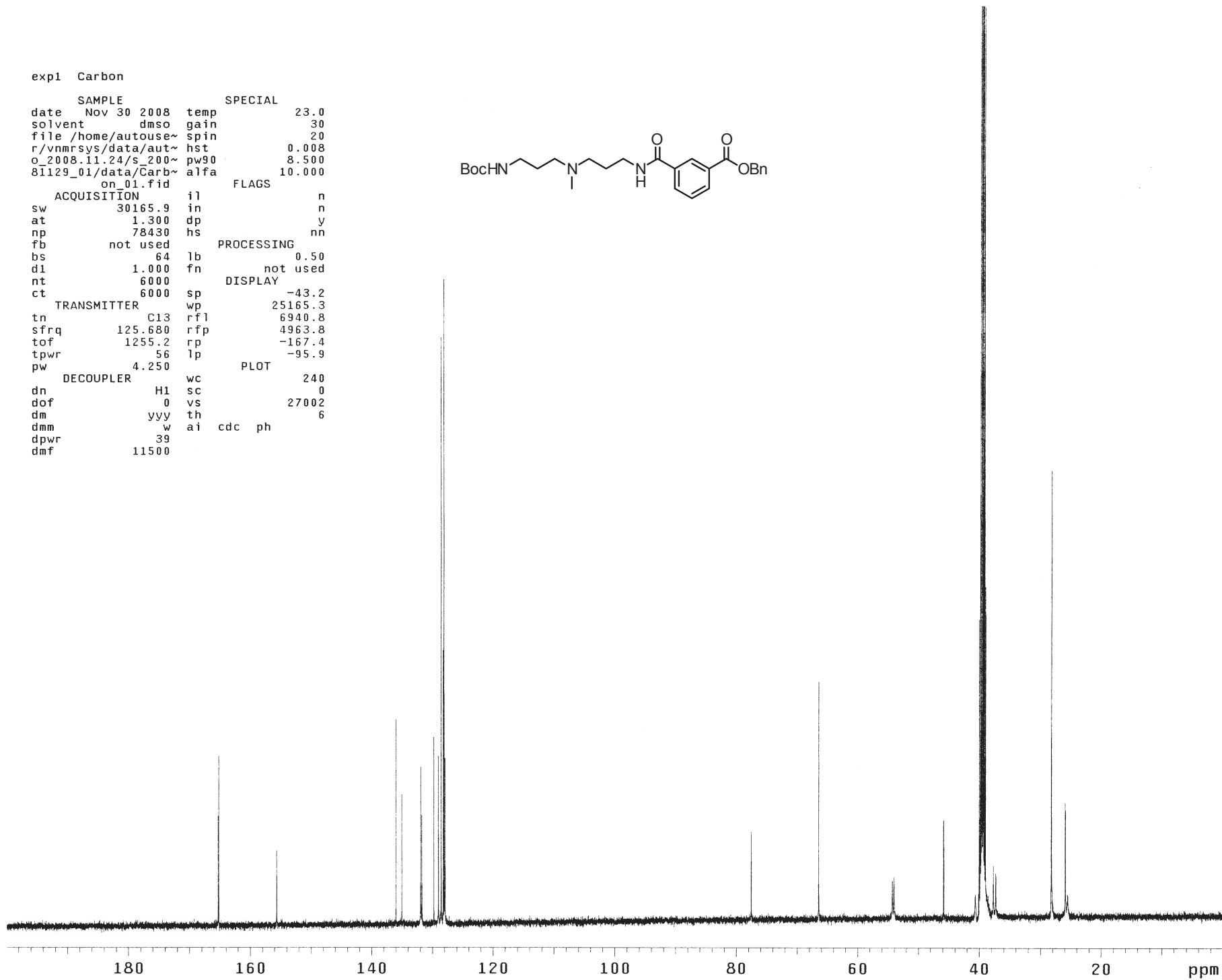
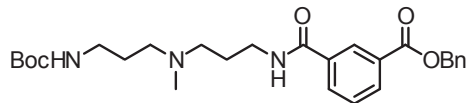
exp1 Proton

```
SAMPLE          SPECIAL
date Nov 30 2008 temp      23.0
solvent dms0 gain      not used
file /home/autouse~ spin      20
r/vnmrSYS/data/aut~ hst      0.008
O_2008.11.24/s_200~ pw90    9.900
81129_01/data/Prot~ alfa    6.600
on_01.fid
ACQUISITION    il          n
sw      8000.0 in          n
at      2.048 dp          y
np      32762 hs         nn
fb      not used
bs      32 lb          0.20
ss      2 fn          65536
d1      1.000
nt      64 sp         -13.1
ct      64 wp          6010.7
TRANSMITTER    rfl          2247.8
tn      H1 rfp          1244.4
sfrq     499.772 rp          122.6
tof      499.6 lp          10.3
tpwr     61
pw      4.950 wc          240
DECOUPLER     C13 sc          0
dn      0 vs          55
dof     0 th          1
dm      nnn ai cdc ph
dmm     c
dpwr    35
dmf     32258
```



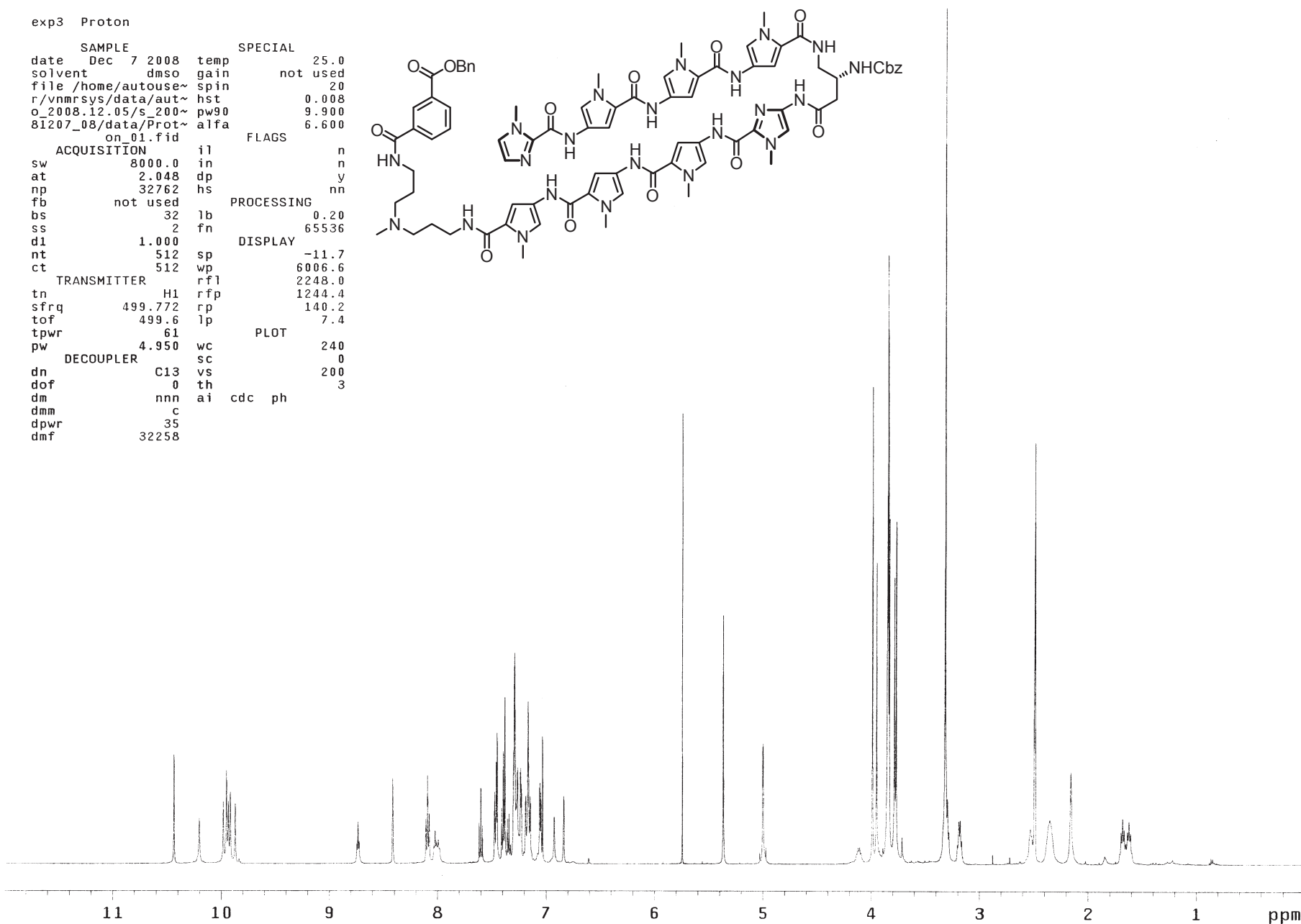
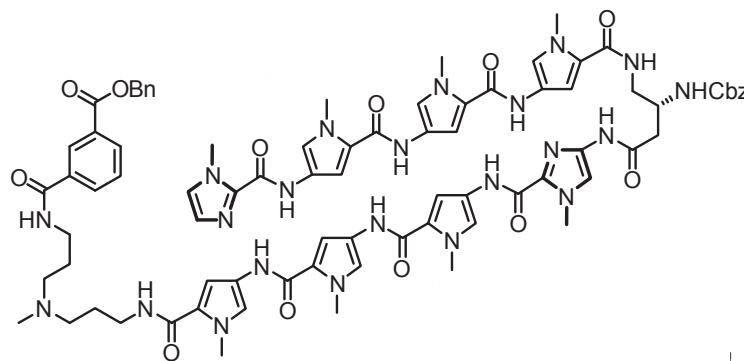
expl Carbon

```
SAMPLE
date Nov 30 2008 temp 23.0
solvent dmsd gain 30
file /home/autouse~ spin 20
r/vnmrSYS/data/aut~ hst 0.008
o_2008.11.24/s_200~ pw90 8.500
81129_01/data/Carb~ alfa 10.000
on_01.fid
ACQUISITION il n
sw 30165.9 in n
at 1.300 dp y
np 78430 hs nn
fb not used
bs 64 lb 0.50
d1 1.000 fn not used
nt 6000
ct 6000 sp DISPLAY -43.2
TRANSMITTER wp 25165.3
tn C13 rfl 6940.8
sfrq 125.680 rfp 4963.8
tof 1255.2 rp -167.4
tpwr 56 lp -95.9
pw 4.250
DECOUPLER wc PLOT 240
dn H1 sc 0
dof 0 vs 27002
dm yy th 6
dmm w ai cdc ph
dpwr 39
dmf 11500
```



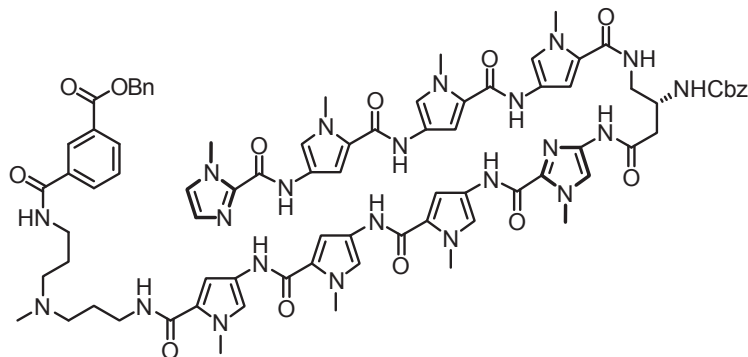
exp3 Proton

SAMPLE		SPECIAL	
date	Dec 7 2008	temp	25.0
solvent	dms	gain	not used
file	/home/autouse~	spin	20
r/vnmr	sys/data/aut~	hst	0.008
o_2008	.12.05/s_200~	pw90	9.900
81207_08	/data/Prot~	alfa	6.600
on_01.fid		FLAGS	
ACQUISITION		i1	n
sw	8000.0	in	n
at	2.048	dp	y
np	32762	hs	nn
fb	not used	PROCESSING	
bs	32	lb	0.20
ss	2	fn	65536
d1	1.000	DISPLAY	
nt	512	sp	-11.7
ct	512	wp	6006.6
TRANSMITTER		rfl	2248.0
tn	H1	rfp	1244.4
sfrq	499.772	rp	140.2
tof	499.6	lp	7.4
tpwr	61	PLOT	
pw	4.950	wc	240
DECOUPLER		sc	0
dn	C13	vs	200
dof	0	th	3
dm	nnn	ai	cdc ph
dmm	c		
dpwr	35		
dmf	32258		



exp3 Carbon

SAMPLE		SPECIAL	
date	Dec 11 2008	temp	25.0
solvent	dms0	gain	30
file	/home/autouse~	spin	20
r/vnmr	sys/data/aut~	hst	0.008
o_2008	.12.10/s_200~	pw90	8.500
8I210_05	/data/Carb~	alfa	10.000
on_01.fid		FLAGS	
sw	30165.9	il	n
at	1.300	in	n
np	78430	dp	y
fb	not used	hs	nn
ACQUISITION		PROCESSING	
bs	64	lb	0.50
d1	1.000	fn	not used
nt	12000	DISPLAY	
ct	12000	sp	12.9
TRANSMITTER		wp	25096.7
tn	C13	rfl	7537.8
sfrq	125.679	rfp	4963.8
tof	1255.2	rp	-158.9
tpwr	56	lp	-95.8
pw	4.250	PLOT	
DECOUPLER		wc	240
dn	H1	sc	0
dof	0	vs	50000
dm	yyy	th	3
dmm	w	ai	cdc ph
dpwr	39		
dmf	11500		



exp57 Proton

SAMPLE		SPECIAL	
date	Feb 1 2009	temp	25.0
solvent	dmsd	gain	not used
file	/home/autouse~	spin	20
r/vnmr	sys/data/aut~	hst	0.008
o_2009	.01.29/s_200~	pw90	9.700
90201_01	/data/Prot~	alfa	6.600
on_01.fid		FLAGS	
sw	8000.0	il	n
at	2.048	in	n
np	32762	dp	y
fb	not used	hs	nn
bs	32	fn	65536
ss	2	PROCESSING	
d1	1.000	sp	-1.7
nt	64	wp	5995.1
ct	64	rfl	2248.5
TRANSMITTER		rfp	1244.4
tn	H1	rp	169.8
sfrq	499.772	lp	-42.7
tof	499.7	PLOT	
tpwr	61	wc	250
pw	4.850	sc	0
DECOUPLER		vs	250
dn	C13	th	3
dof	0	ai	cdc ph
dm	nnn		
dmm	c		
dpwr	35		
dmf	32258		

