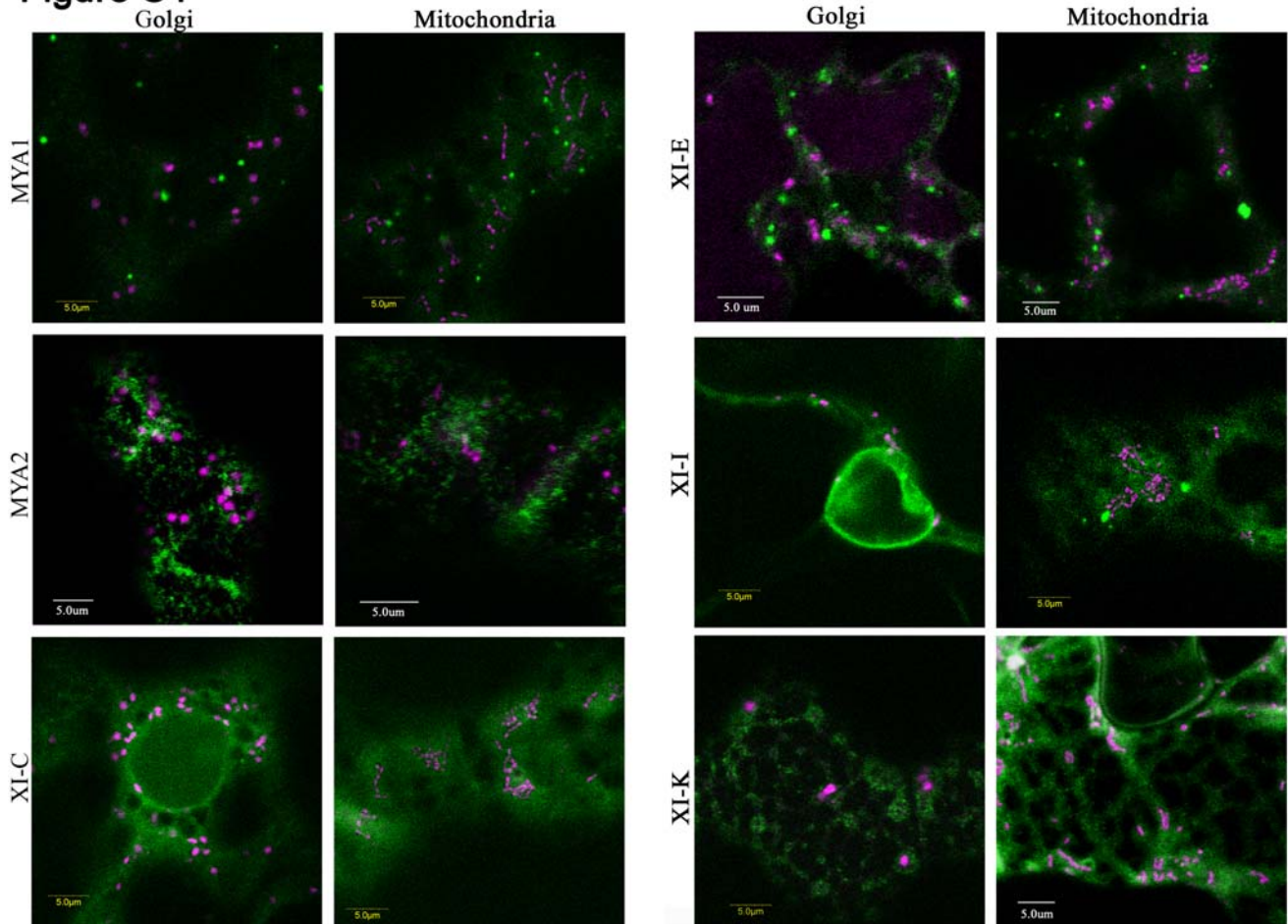


Figure S4



Figures S4: Subcellular localization of IQ-tail inhibitory myosin truncations compared to Golgi and mitochondria localization. eGFP-myosins and mRFP organelle markers were co-expressed in leaves of *N. benthamiana*. The panel shows confocal images of both fluorescent proteins, 48 hours after infiltration, in abaxial epidermal cells. None of the inhibitory myosins co-localized solely with the organelles whose motility is arrested. Blue is autofluorescence from plastids.