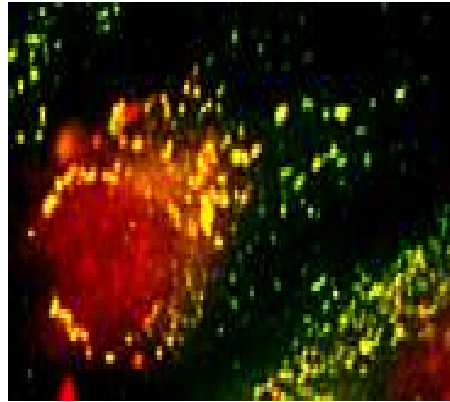
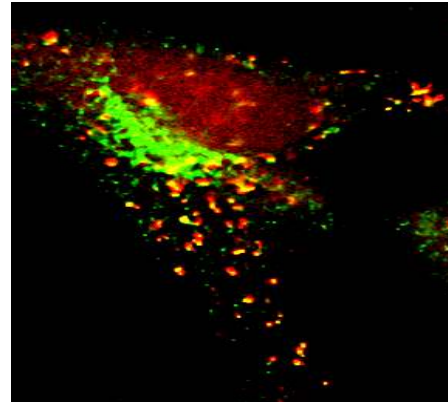


LAMP-1



CI-MPR



Green = 2° Ab, Red = AF647 biotinylated dextran

FIGURE S1: Immunofluorescence using antibodies specific to LAMP-1 and CI-MPR (green) was performed after biotinylated dextran (red) was given chase for 20 hrs. The dextran was found to significantly reside in LAMP-1 positive, CI-MPR negative organelles.

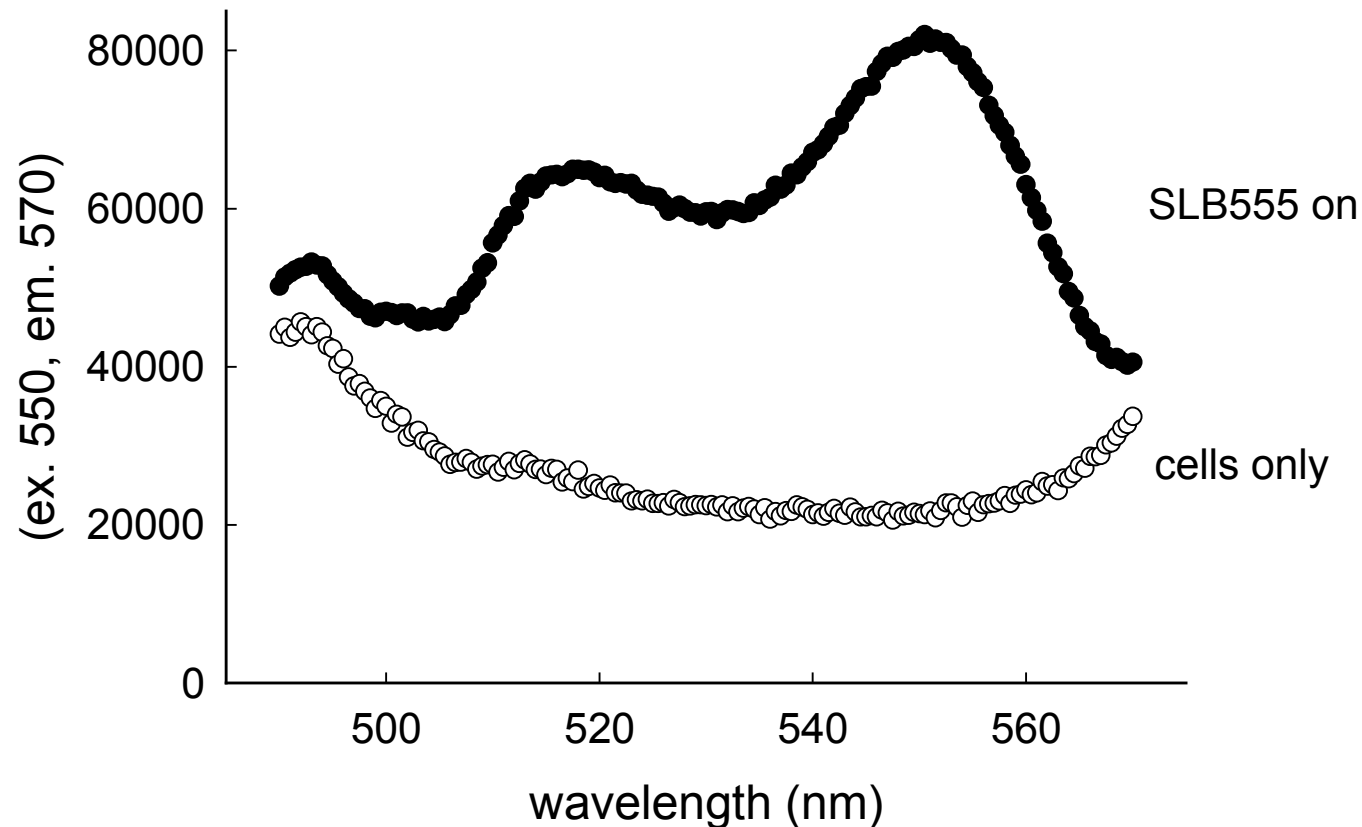


FIGURE S2: Examples of FRET donor excitation spectra of cells incubated with or without streptavidin beads for 2 hours. Spectra taken of cells without beads and dextran probes were used for background subtraction for subsequent FRET calculations (cells only). The same strategy was used for subtracting background at FRET acceptor wavelengths.