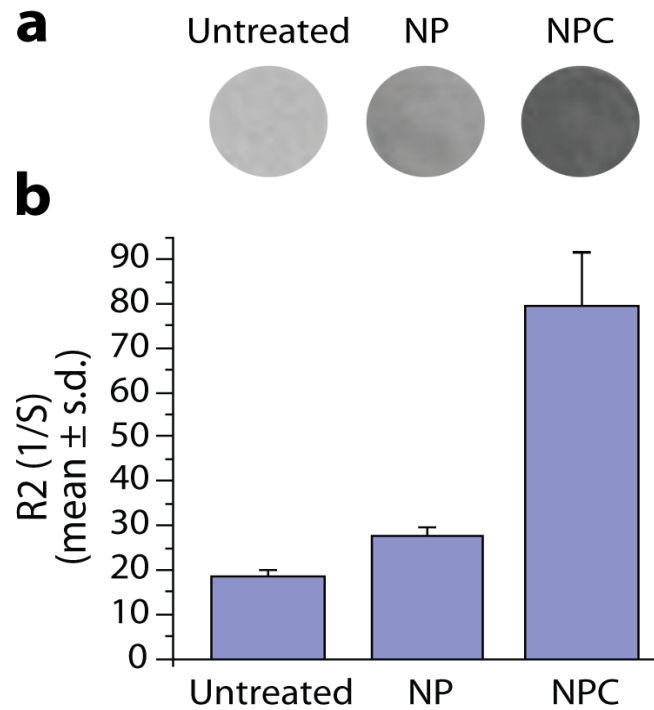


## **Supporting Information for**

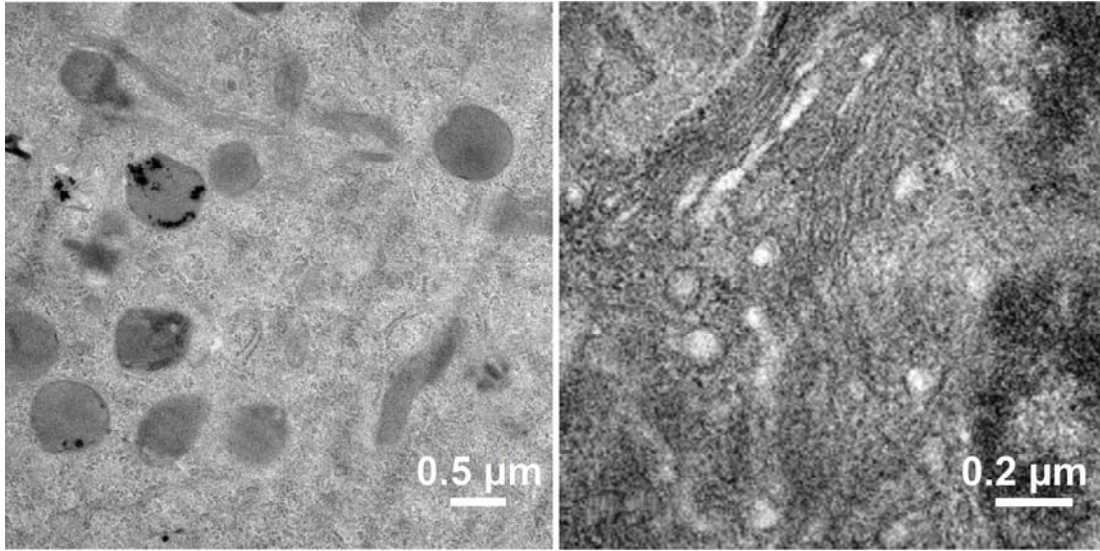
### **Inhibition of Tumor Cell Invasion with Chlorotoxin-Bound Superparamagnetic Nanoparticles**

**Omid Veisheh, Jonathan Gunn, Forrest Kievet, Chen Fang, Conroy Sun, Jerry Lee and  
Miqin Zhang\***

\*To whom correspondence should be addressed. E-mail: [mzhang@u.washington.edu](mailto:mzhang@u.washington.edu)



**Figure S1.** NPC as a MRI contrast agent. (a) T2-weighted MR phantom imaging of C6 cells treated with NP, NPC, or left untreated, indicating enhanced contrast enhancement of cells exposed to targeting NPC versus non-targeting NP. (b) Quantitation of contrast enhancement by NPC as measured by transverse relaxation rates ( $R_2$ ) of cell samples in (a).



**Figure S2.** TEM images of the cells treated with NPC (left) and CTX (right) showing that the size of endosomes in NPC-treated cells is markedly larger than in CTX-treated cells.