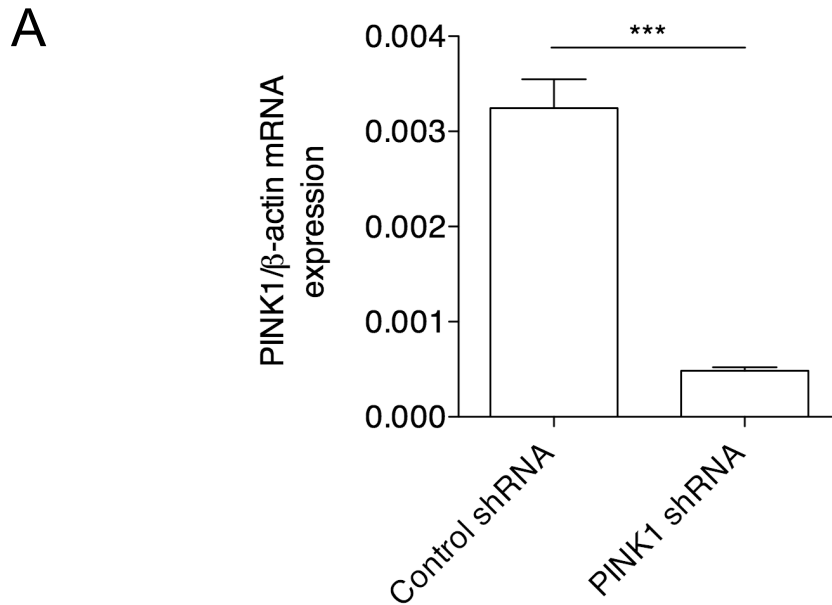
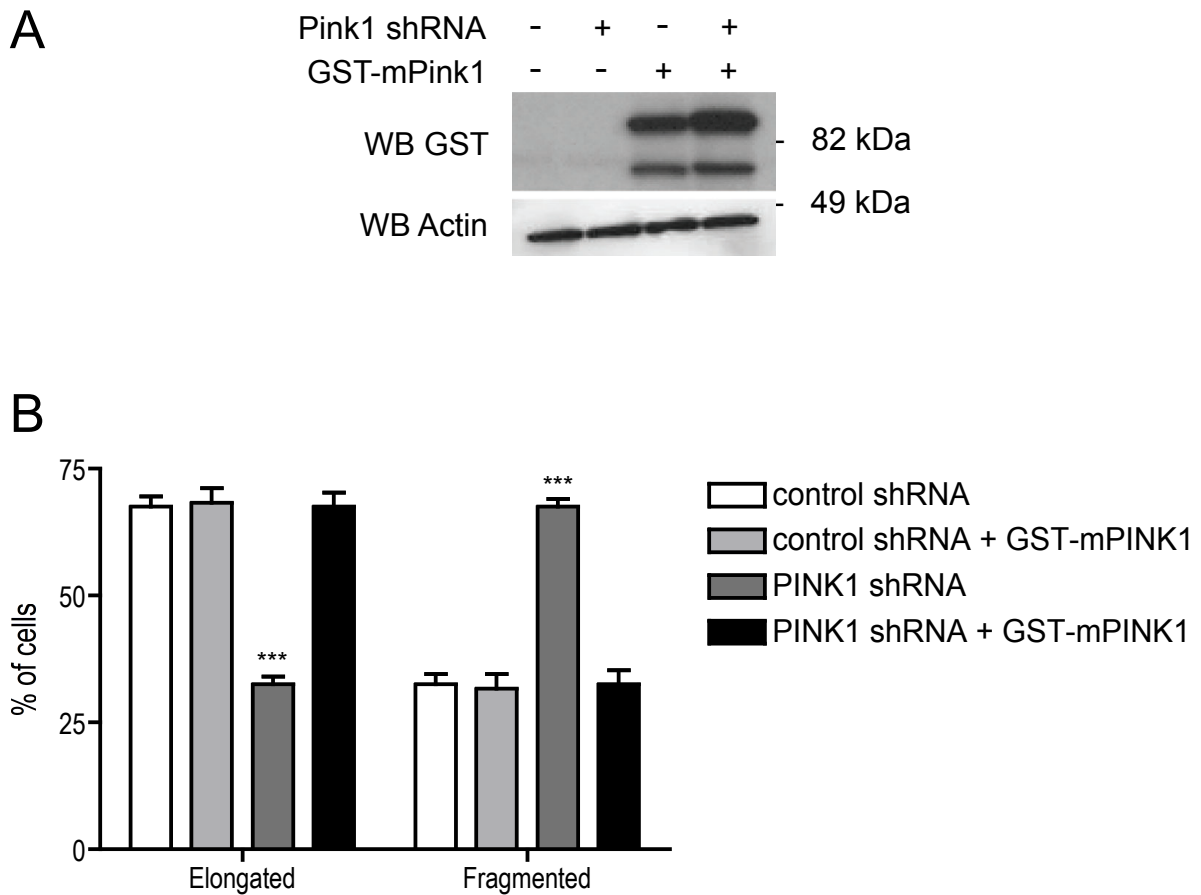


Supplementary Figure 1



Supplementary Figure 1 Measuring of shRNA induced Pink1 silencing by quantitative RT-PCR. mRNA from M17 cells stably expressing either control or Pink1 shRNA was isolated and quantified using qRT-PCR. Values were normalized to β -actin mRNA (n=3, means \pm SEM). Significant change was determined using Student's t-test (***) p<0.001)

Supporting information Figure 2



Supplementary Figure 2 Overexpression of mouse Pink1 rescues altered mitochondrial morphology upon human Pink1 silencing in M17 cells **A** GST-mPink1 was transiently transfected into M17 cells stably expressing control or Pink1 shRNA. Cell extracts were then probed for transfected GST-mPink1 and Actin by Western blot analysis. **B** Quantitative analysis of mitochondrial morphology after Pink1 silencing without vs. with GST-mouse Pink1 overexpression (n=4, means \pm SEM, 30 cells counted per experiment). Significant changes (vs. the control shRNA condition) are indicated (***) p<0.001; One-way ANOVA with Newman-Keuls Multiple Comparison Test)