

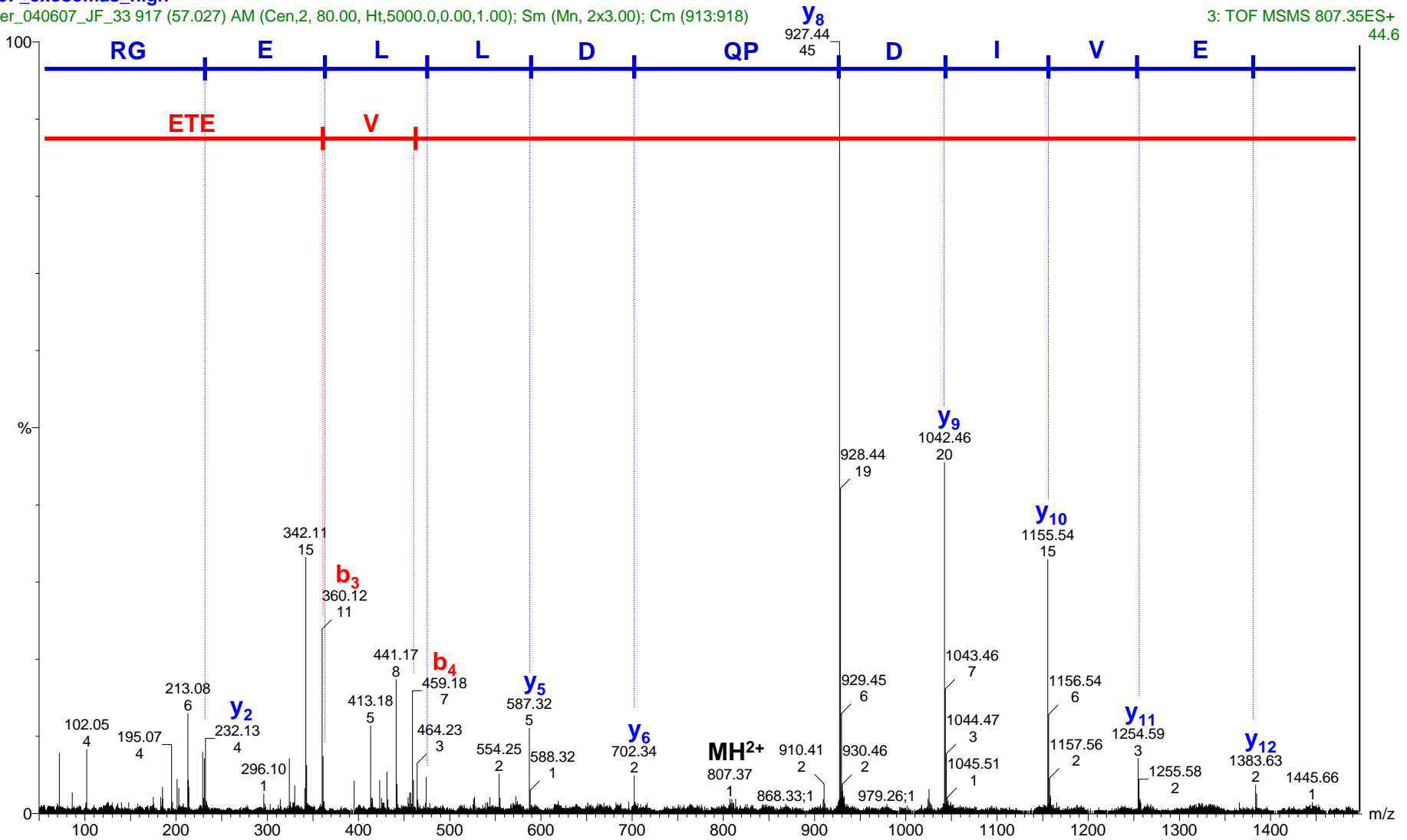
Figure S1. MS/MS spectrum of single peptide-based identifications

Protein Accession Number: SDC4\_RAT  
 Peptide Sequence: **ETEVIDPQDLLEGR**  
 Peptide Score: 80  
 Precursor Ion: 807.35  
 Charge State: 2+

JF\_exosomas\_high

er\_040607\_JF\_33 917 (57.027) AM (Cen,2, 80.00, Ht,5000.0,0.00,1.00); Sm (Mn, 2x3.00); Cm (913:918)

3: TOF MSMS 807.35ES+  
44.6

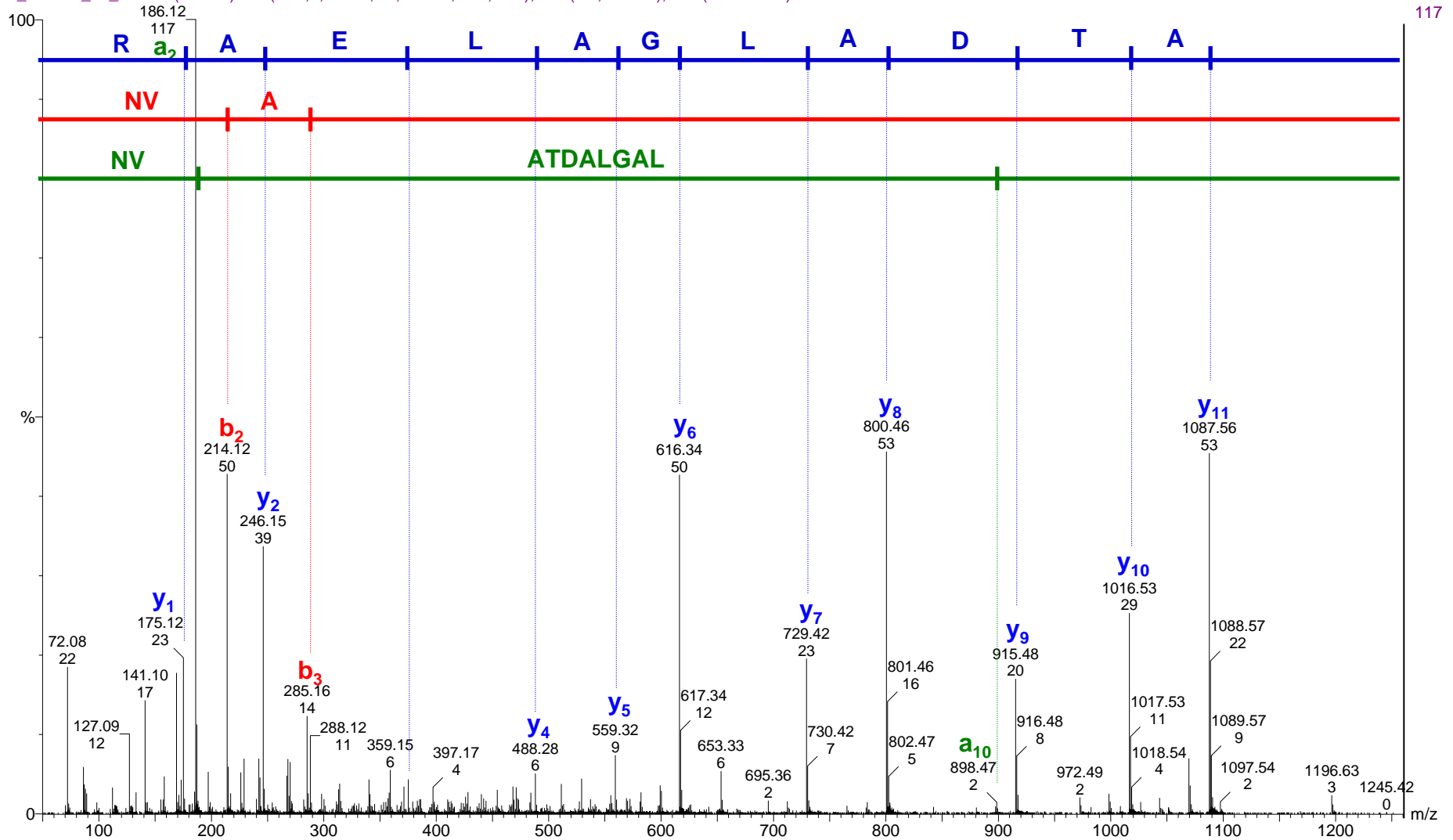


Protein Accession Number: REEP6\_RAT  
Peptide Sequence: **NVATDALGALEAR**  
Peptide Score: 82  
Precursor Ion: 650.83  
Charge State: 2+

JF\_exosomas\_high

er\_300507\_JF\_1 1852 (54.979) AM (Cen,2, 80.00, Ht,5000.0,0.00,1.00); Sm (Mn, 2x3.00); Cm (1849:1854)

2: TOF MSMS 650.83ES+



Protein Accession Number: MOT1\_RAT

Peptide Sequence: **SDANTDLIGGSPK**

Peptide Score: 72

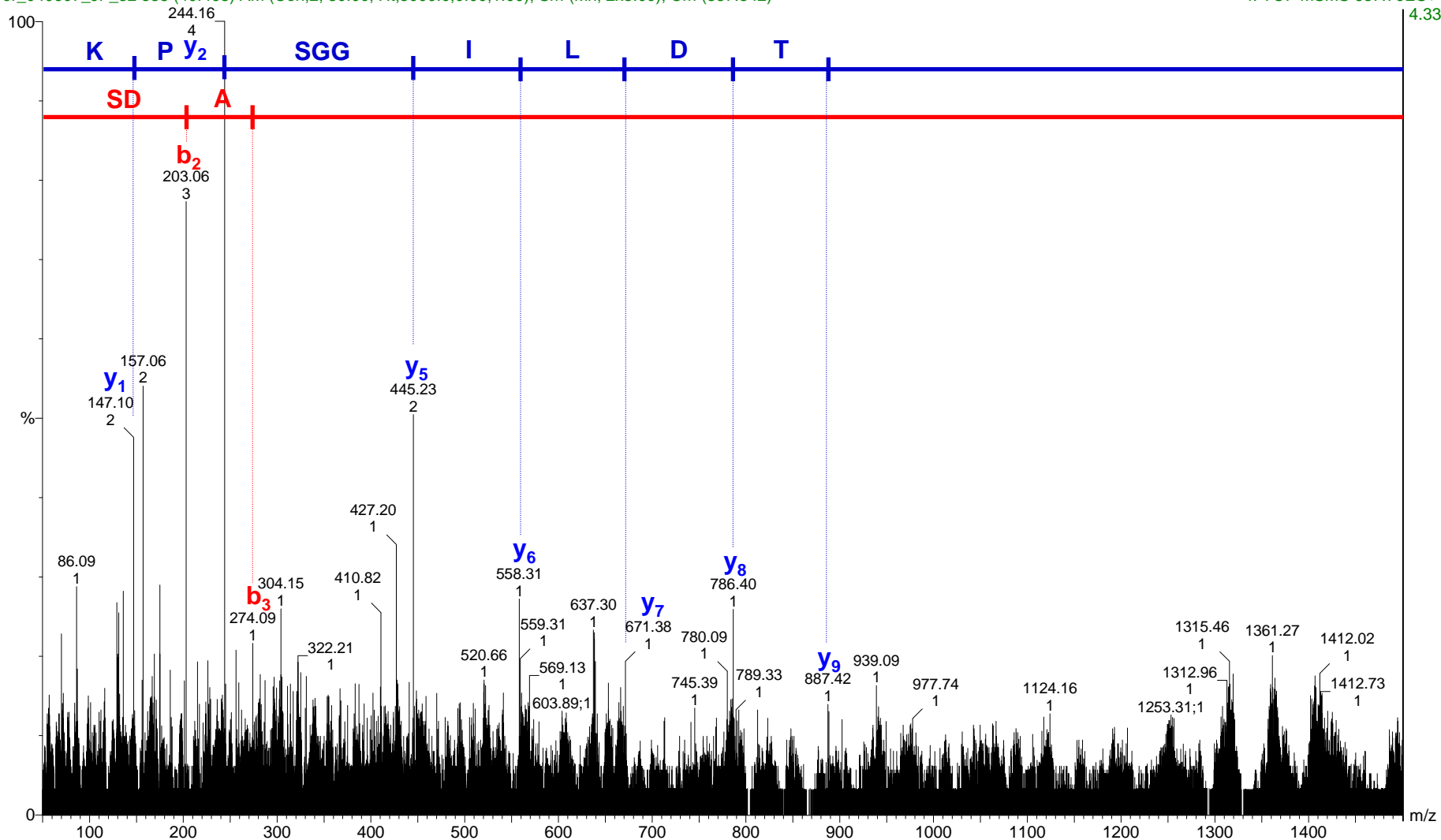
Precursor Ion: 637.79

Charge State: 2+

JF\_exosomas\_high

er\_040607\_JF\_32 338 (40.468) AM (Cen,2, 80.00, Ht,5000.0,0.00,1.00); Sm (Mn, 2x3.00); Cm (337:342)

4: TOF MSMS 637.79ES+

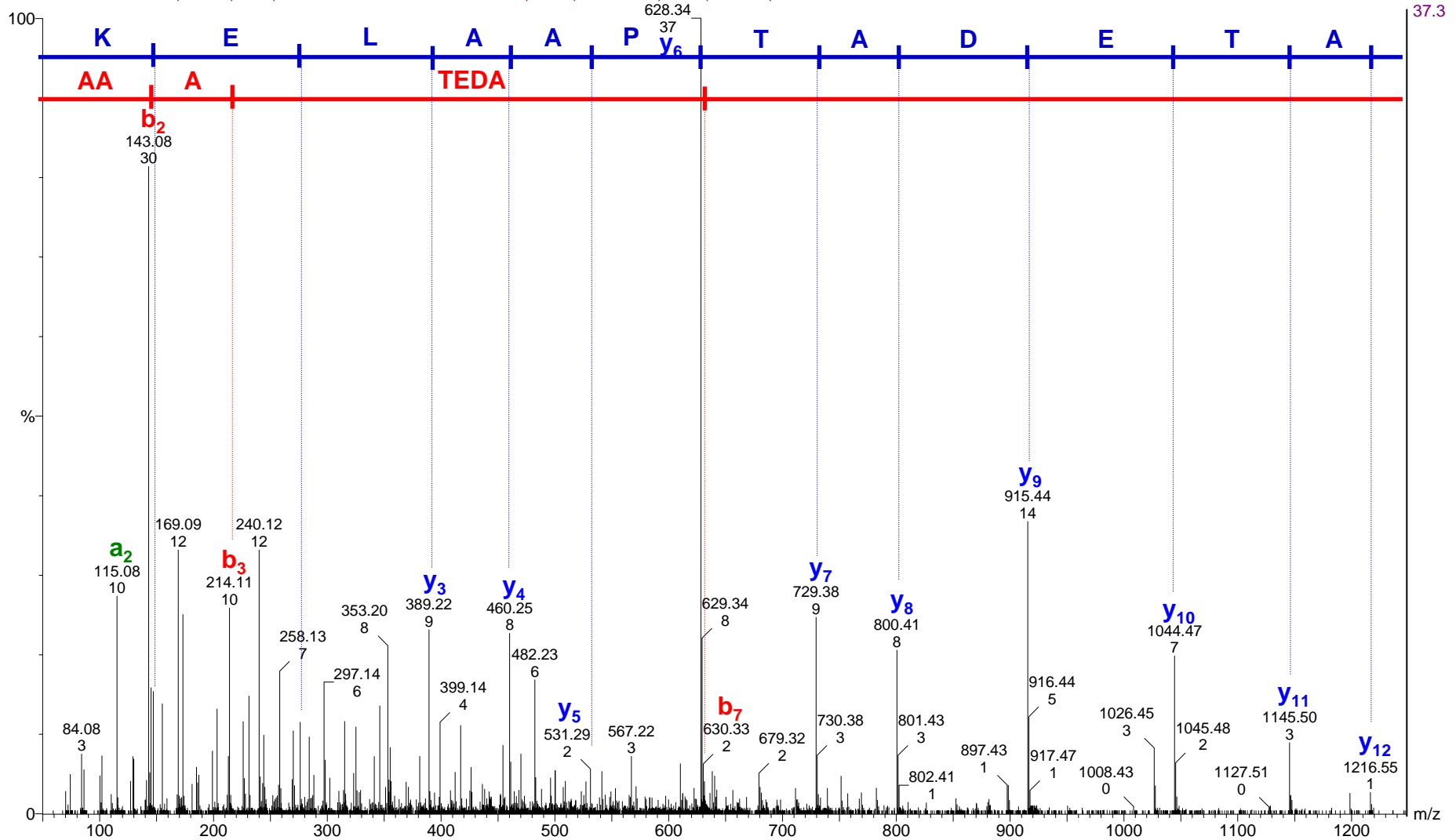


Protein Accession Number: NTCP\_RAT  
Peptide Sequence: **AAATEDATPAALEK**  
Peptide Score: 67  
Precursor Ion: 679.81  
Charge State: 2+

JF\_exosomas\_high

er\_300507\_JF\_20 545 (40.936) AM (Cen,2, 80.00, Ht,5000.0,0.00,1.00); Sm (Mn, 2x3.00); Cm (545:550)

4: TOF MSMS 679.81ES+



Protein Accession Number: COF1\_RAT

Peptide Sequence: **YALYDATYETK**

Peptide Score: 52

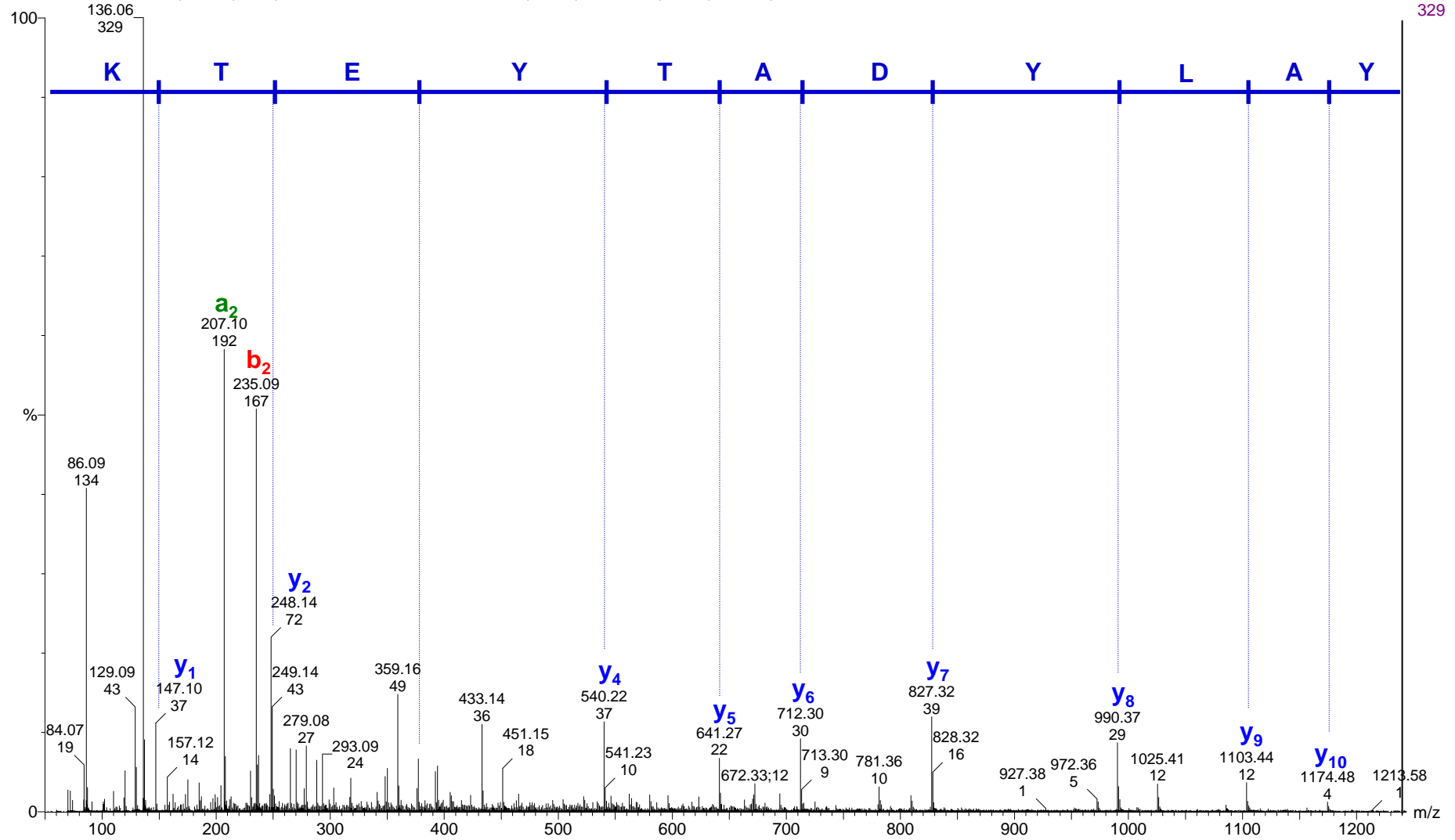
Precursor Ion: 669.26

Charge State: 2+

JF\_EH

er\_061307\_JF\_47 595 (36.280) AM (Cen,2, 80.00, Ht,5000.0,0.00,1.00); Sm (Mn, 2x3.00); Cm (595:600)

3: TOF MSMS 669.26ES+  
329

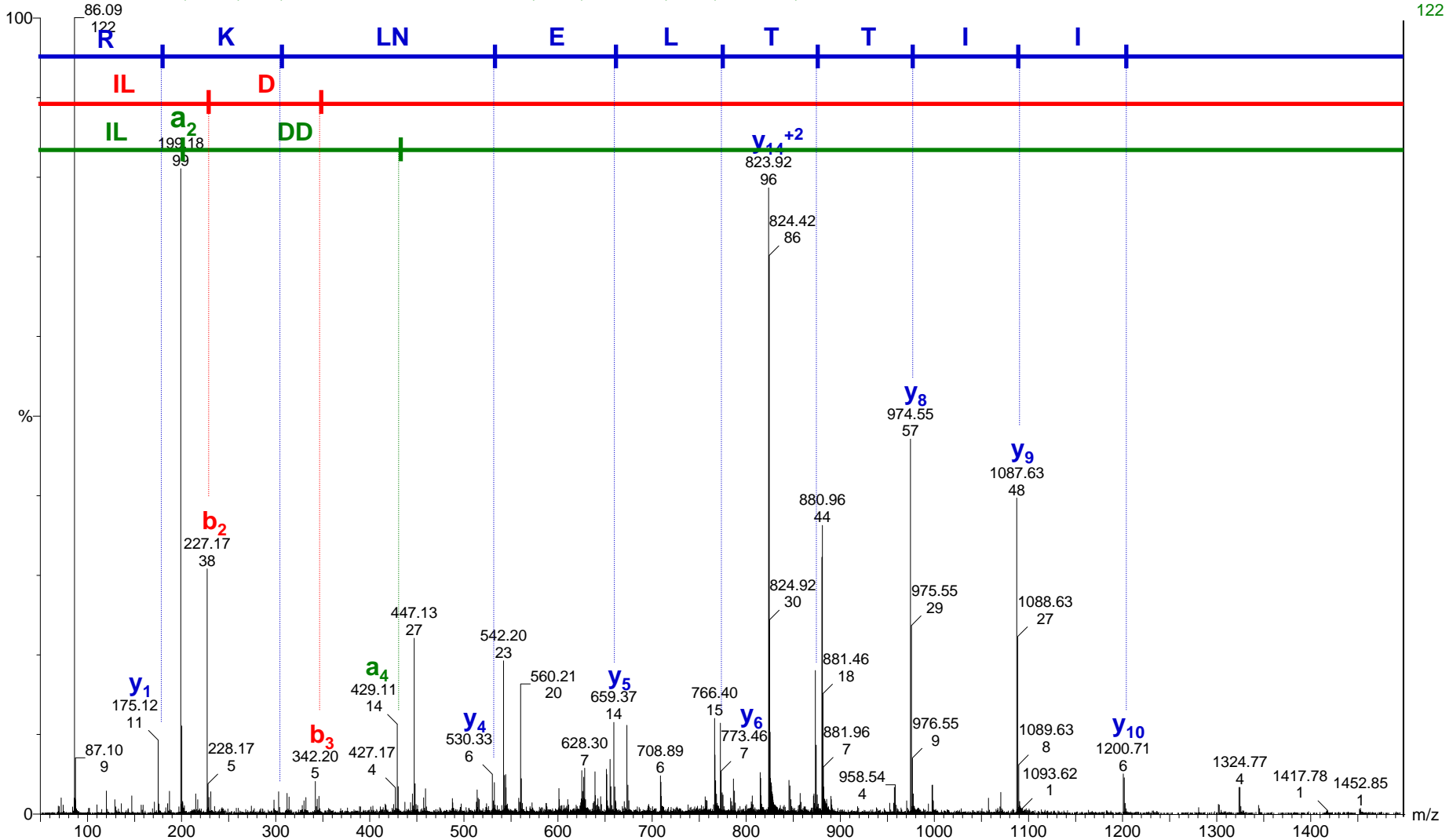


Protein Accession Number: DYHC\_RAT  
 Peptide Sequence: **ILDDDTIITLLENLKR**  
 Peptide Score: 88  
 Precursor Ion: 624.99  
 Charge State: 3+

JF

er020307\_JF\_004 1229 (50.280) AM (Cen,2, 80.00, Ht,5000.0,0.00,1.00); Sm (Mn, 2x3.00); Cm (1229:1235)

3: TOF MSMS 624.99ES+ 122

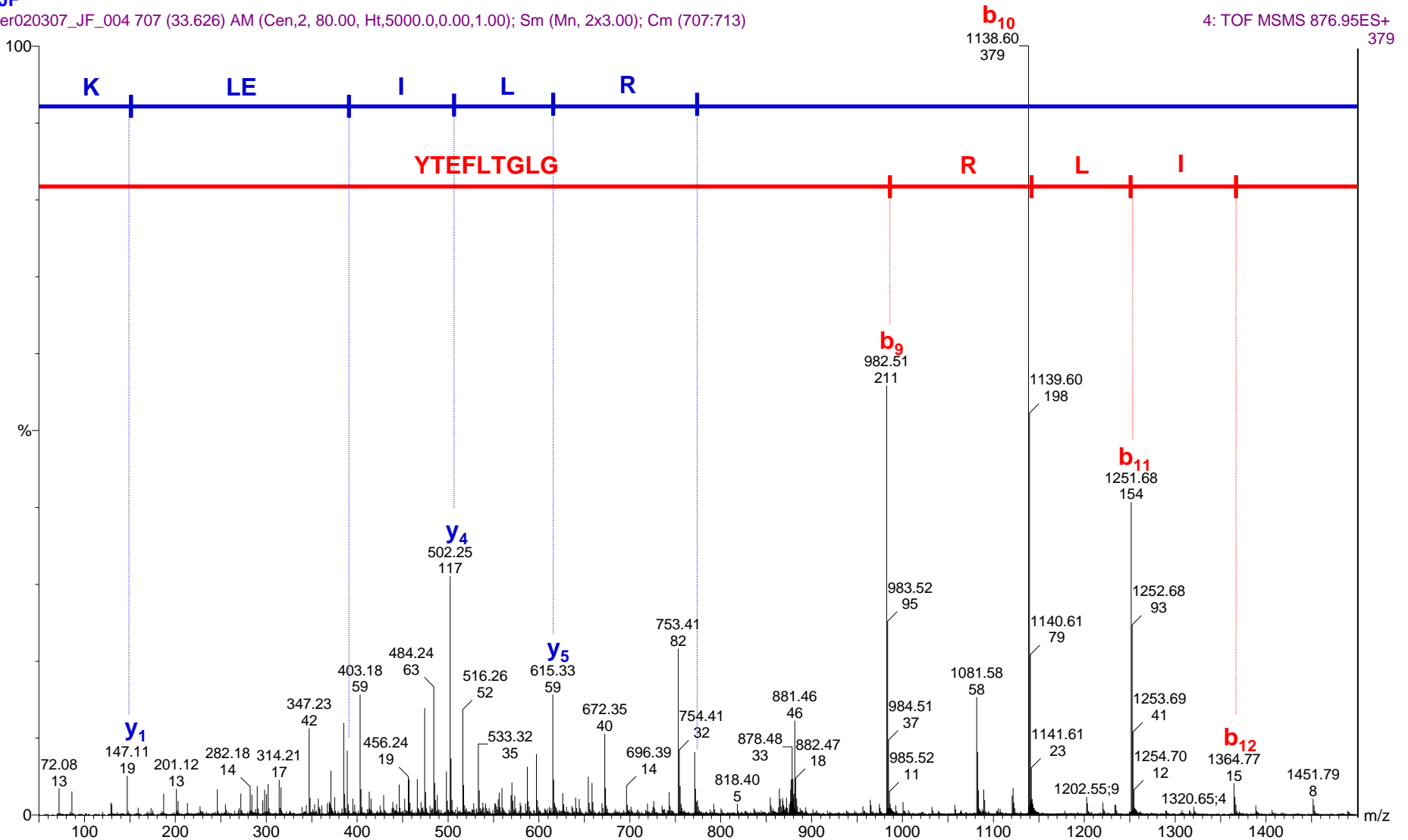


Protein Accession Number: TSC2\_RAT  
Peptide Sequence: **YTEFLTGLGRLIELK**  
Peptide Score: 23  
Precursor Ion: 876.95  
Charge State: 2+

JF

er020307\_JF\_004 707 (33.626) AM (Cen,2, 80.00, Ht,5000.0,0.00,1.00); Sm (Mn, 2x3.00); Cm (707:713)

4: TOF MSMS 876.95ES+



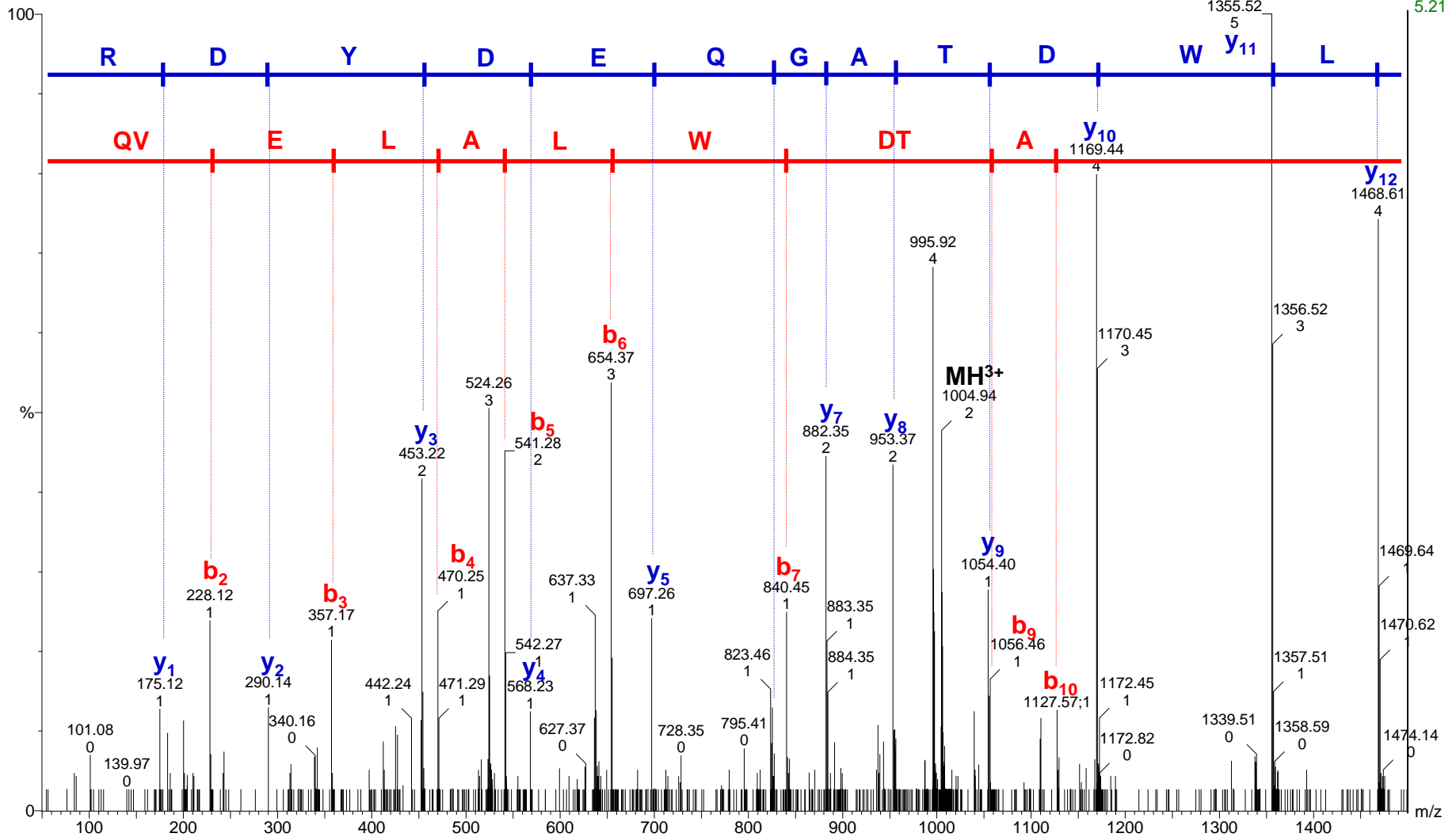


Protein Accession Number: RHOA\_RAT  
Peptide Sequence: **QVELALWDTAGQEDYDR**  
Peptide Score: 57  
Precursor Ion: 1004.94  
Charge State: 3+

JF\_exosomas\_high

er\_300507\_JF\_3 1117 (55.126) AM (Cen,2, 80.00, Ht,5000.0,0.00,1.00); Sm (Mn, 2x3.00); Cm (1117:1122)

3: TOF MSMS 1004.94ES+

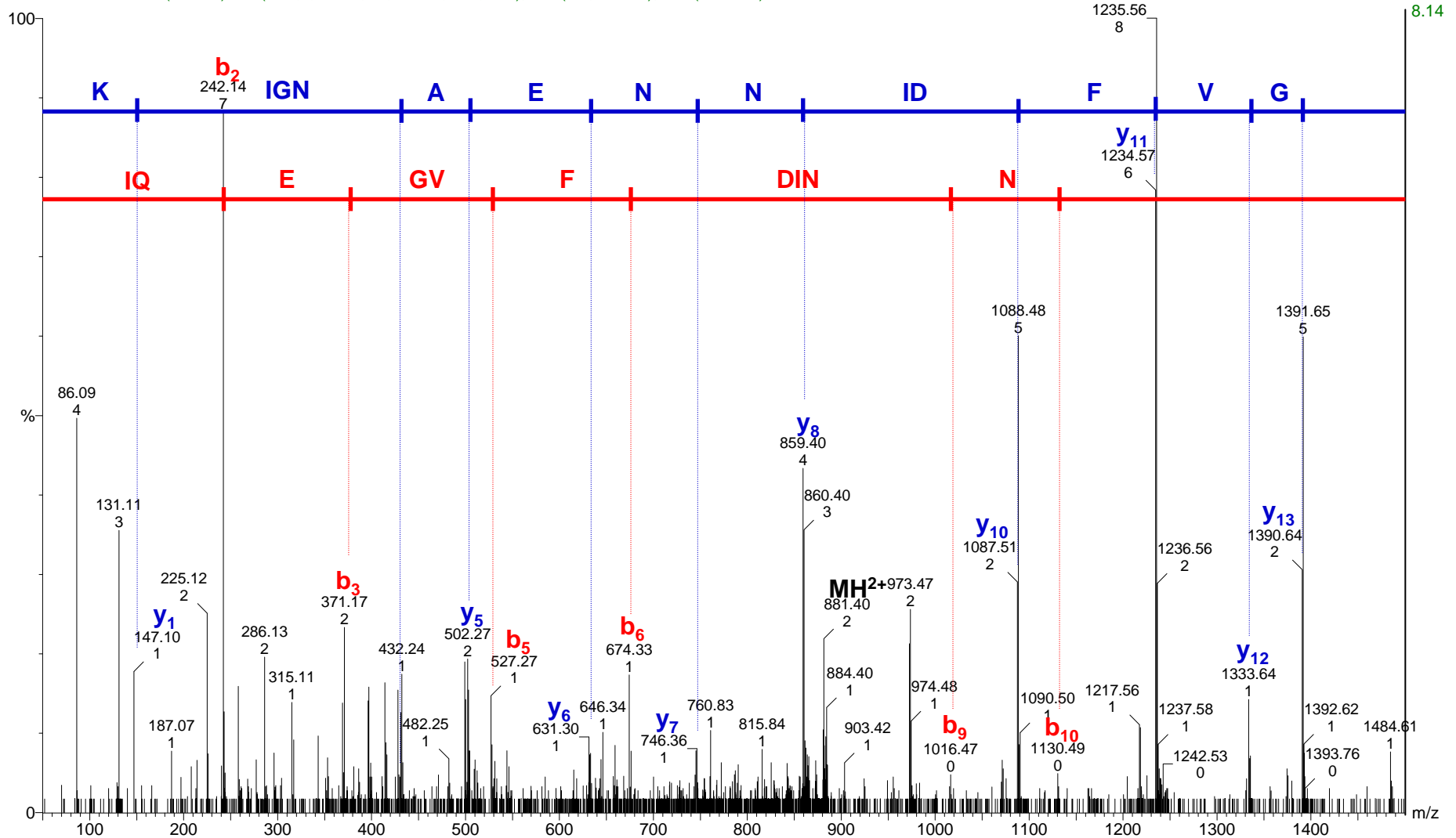


Protein Accession Number: RAB2A\_RAT  
Peptide Sequence: **IQEGVFDINNEANGIK**  
Peptide Score: 59  
Precursor Ion: 881.39  
Charge State: 2+

JF\_exosomas\_high

er\_300507\_JF\_5 970 (52.817) AM (Cen,2, 80.00, Ht,5000.0,0.00,1.00); Sm (Mn, 2x3.00); Cm (968:973)

4: TOF MSMS 881.39ES+ 8.14

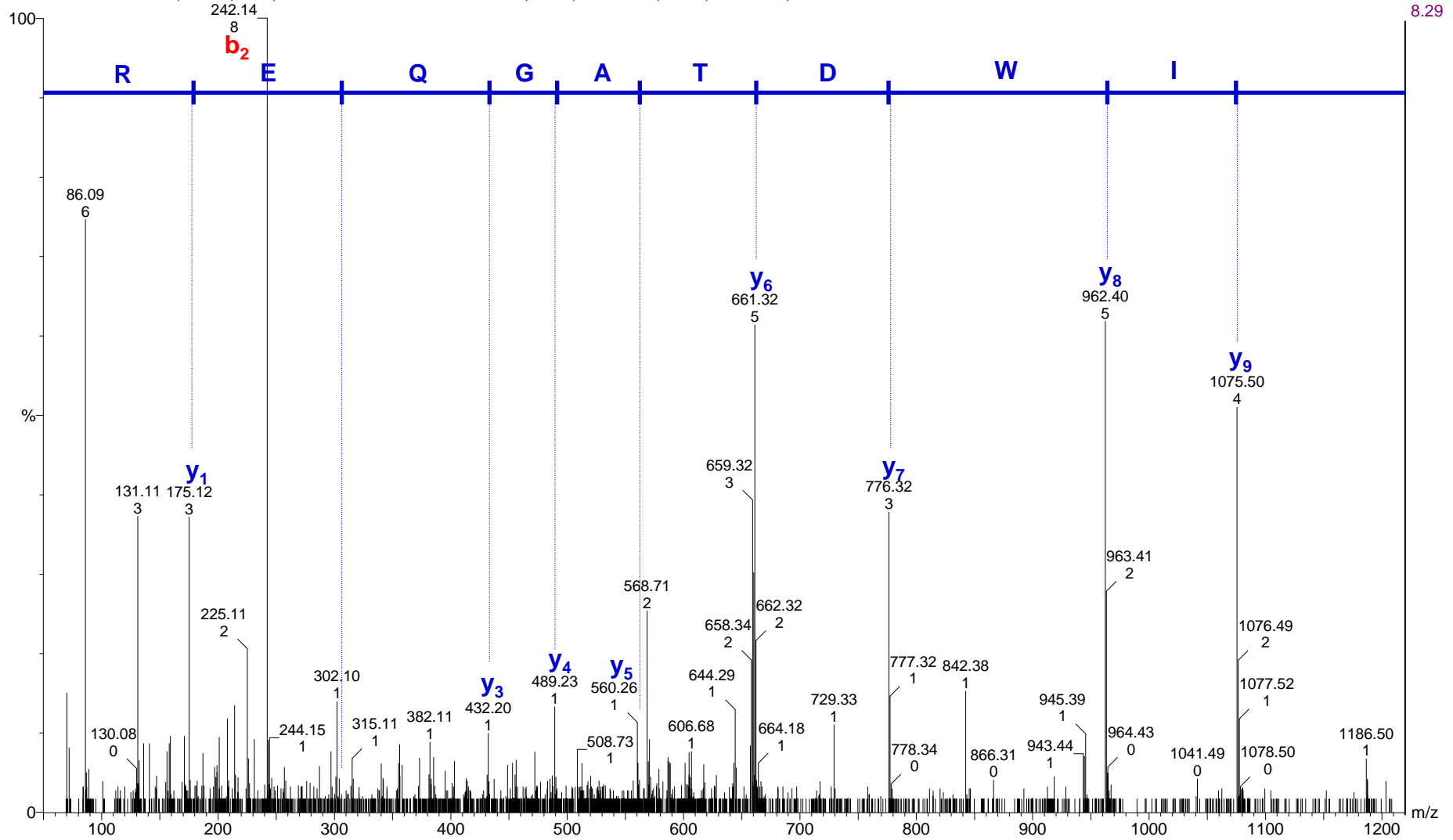


Protein Accession Number: RAB43\_RAT  
Peptide Sequence: **LQIWDTAGQER**  
Peptide Score: 41  
Precursor Ion: 658.81  
Charge State: 2+

JF\_exosomas\_high

er\_300507\_JF\_4 1065 (55.714) AM (Cen,2, 80.00, Ht,5000.0,0.00,1.00); Sm (Mn, 2x3.00); Cm (1065:1070)

4: TOF MSMS 658.81ES+  
8.29



Protein Accession Number: GNAO1\_RAT

Peptide Sequence: **LLLLGAGESGK**

Peptide Score: 72

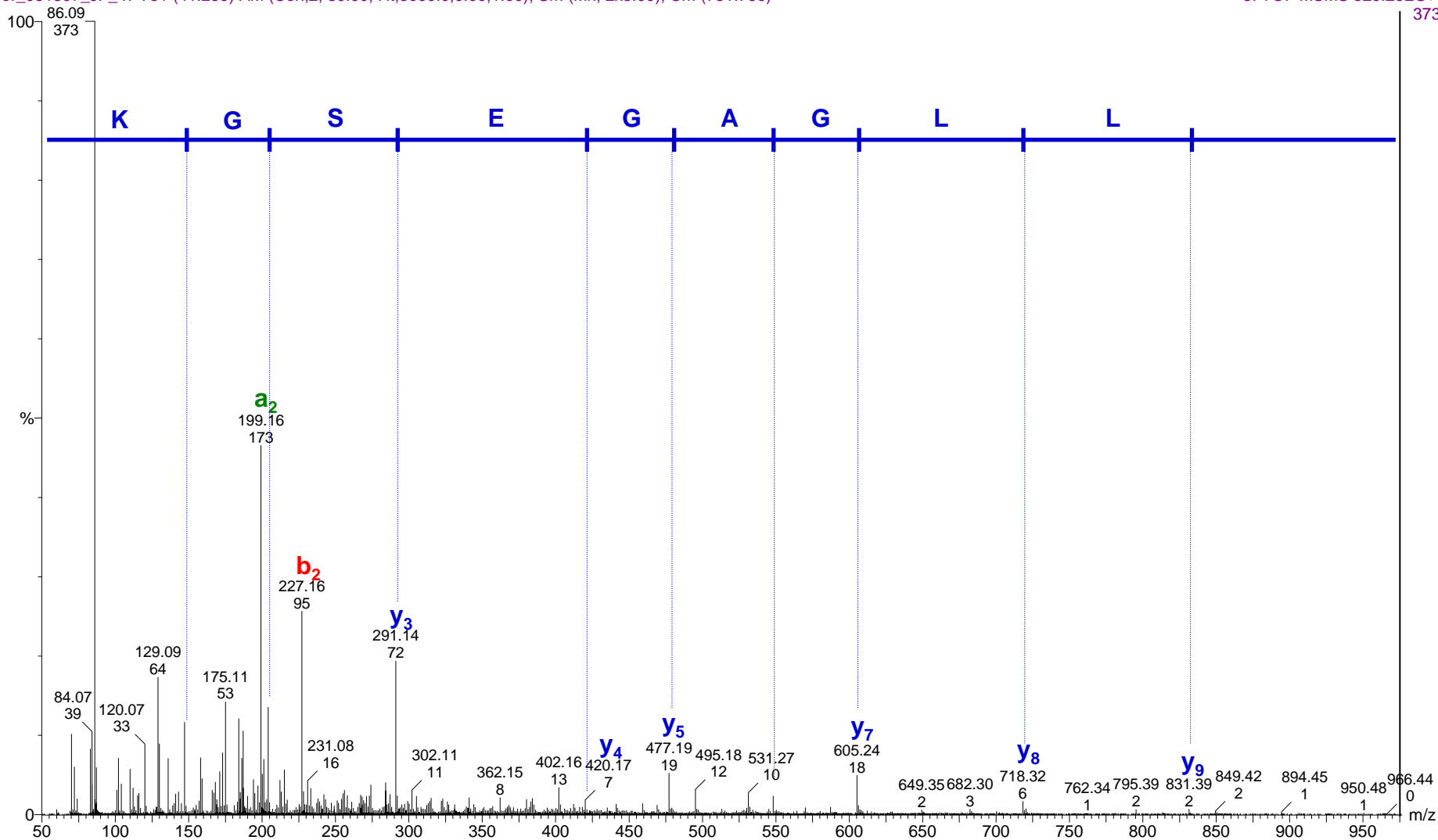
Precursor Ion: 529.26

Charge State: 2+

JF\_EH

er\_061307\_JF\_47 751 (41.259) AM (Cen,2, 80.00, Ht,5000.0,0.00,1.00); Sm (Mn, 2x3.00); Cm (751:756)

3: TOF MSMS 529.26ES+



Protein Accession Number: YIPF5\_RAT

Peptide Sequence: **TLTVLHPLR**

Peptide Score: 36

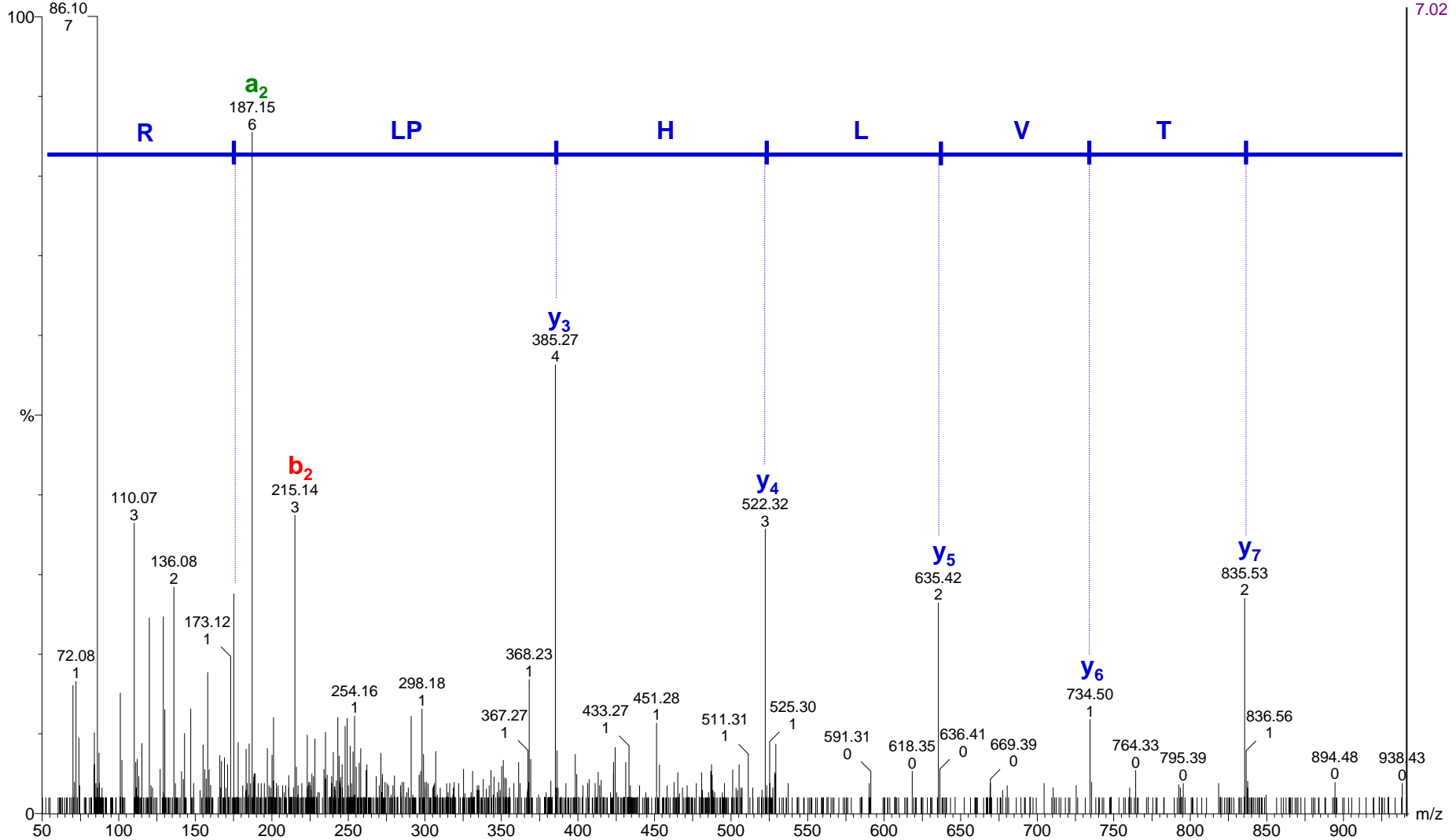
Precursor Ion: 525.34

Charge State: 2+

JF

er070906\_JF\_1 804 (35.372) AM (Cen,2, 80.00, Ht,5000.0,0.00,1.00); Sm (Mn, 2x3.00); Cm (804:810)

2: TOF MSMS 525.34ES+ 7.02

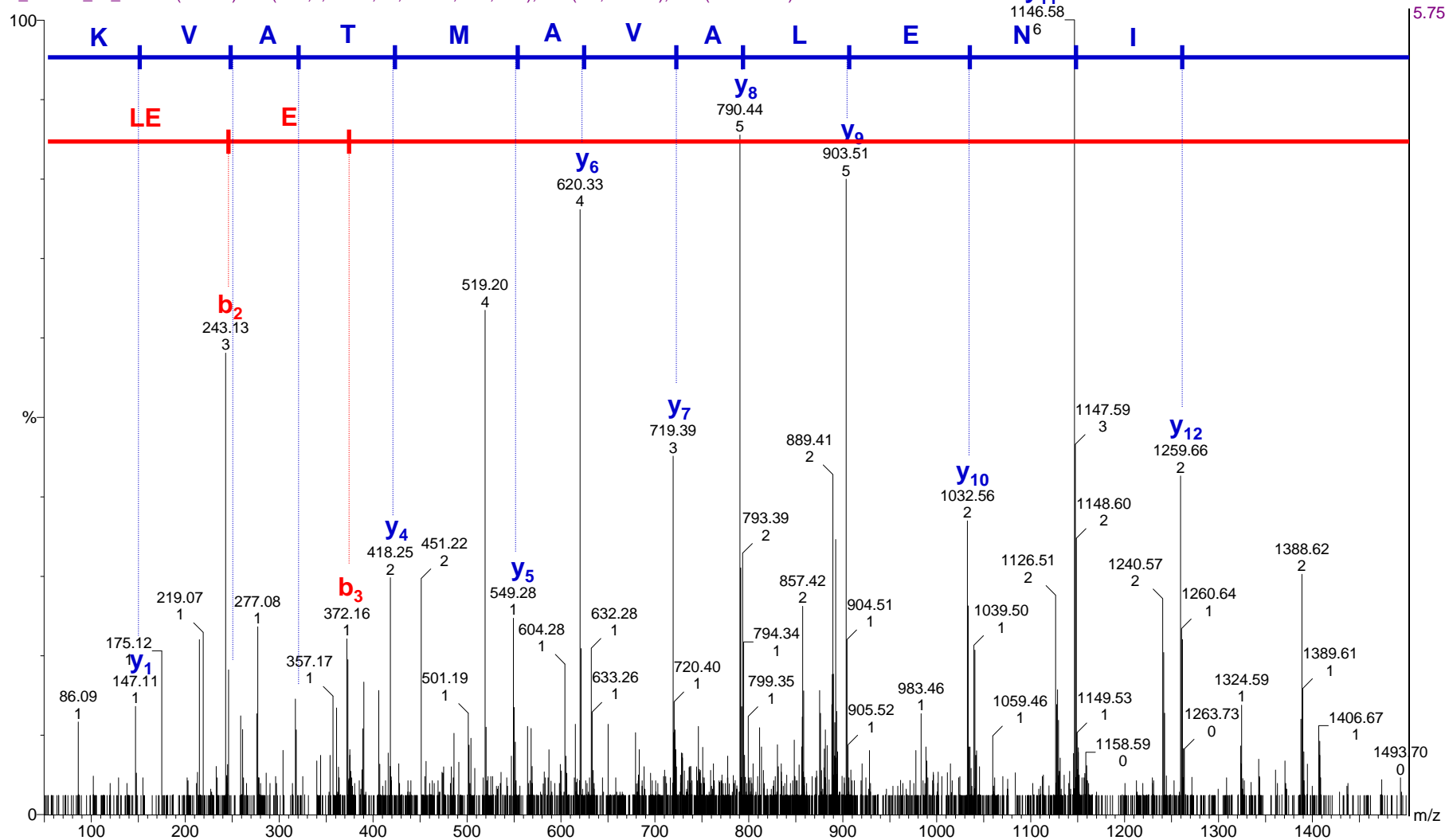


Protein Accession Number: TMED2\_RAT  
Peptide Sequence: **LEEMINELAVAMTAVK**  
Peptide Score: 67  
Precursor Ion: 889.43  
Charge State: 2+

JF\_exosomas\_high

er\_300507\_JF\_3 1985 (57.545) AM (Cen,2, 80.00, Ht,5000.0,0.00,1.00); Sm (Mn, 2x3.00); Cm (1983:1988)

2: TOF MSMS 889.43ES+

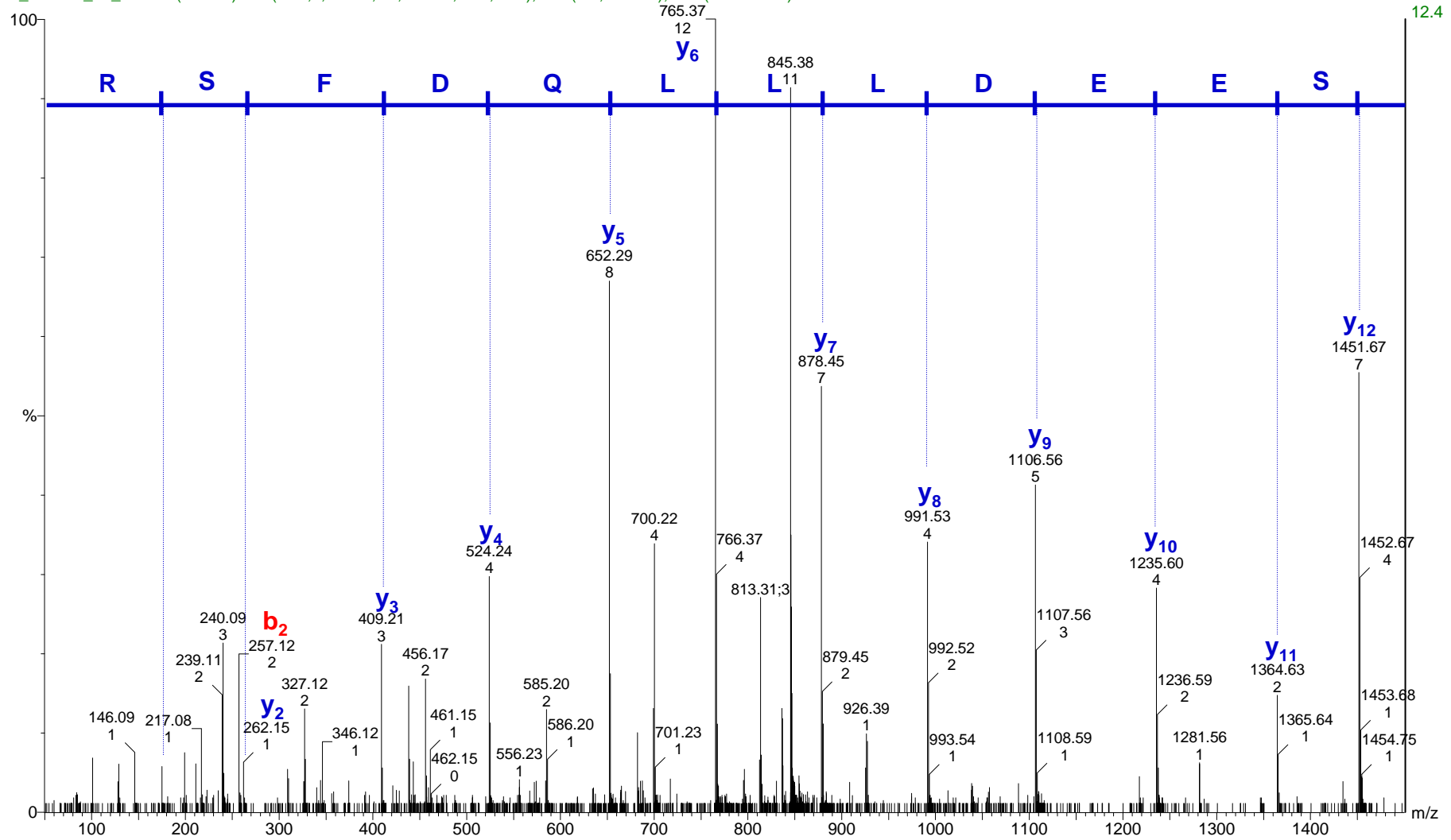


Protein Accession Number: SSRG\_RAT  
Peptide Sequence: **QQSEEDLLLQDFSR**  
Peptide Score: 84  
Precursor Ion: 854.38  
Charge State: 2+

JF\_exosomas\_high

er\_300507\_JF\_3 1909 (55.647) AM (Cen,2, 80.00, Ht,5000.0,0.00,1.00); Sm (Mn, 2x3.00); Cm (1905:1910)

2: TOF MSMS 854.38ES+ 12.4



Protein Accession Number: RIB1\_RAT

Peptide Sequence: **AVTSEIAVLQSR**

Peptide Score: 40

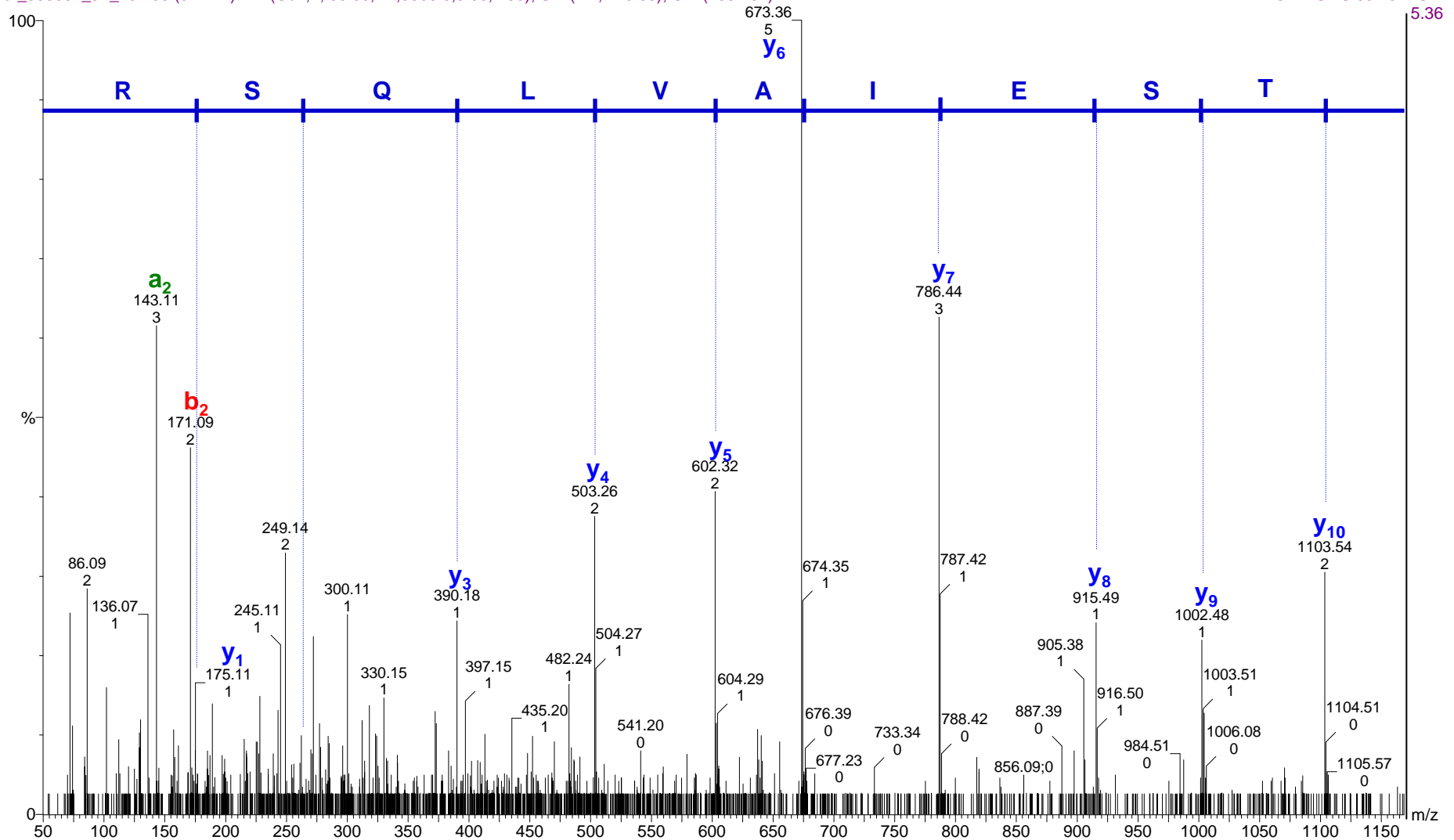
Precursor Ion: 637.32

Charge State: 2+

JF\_exosomas\_high

er\_300507\_JF\_25 759 (54.141) AM (Cen,2, 80.00, Ht,5000.0,0.00,1.00); Sm (Mn, 2x3.00); Cm (759:764)

2: TOF MSMS 637.32ES+



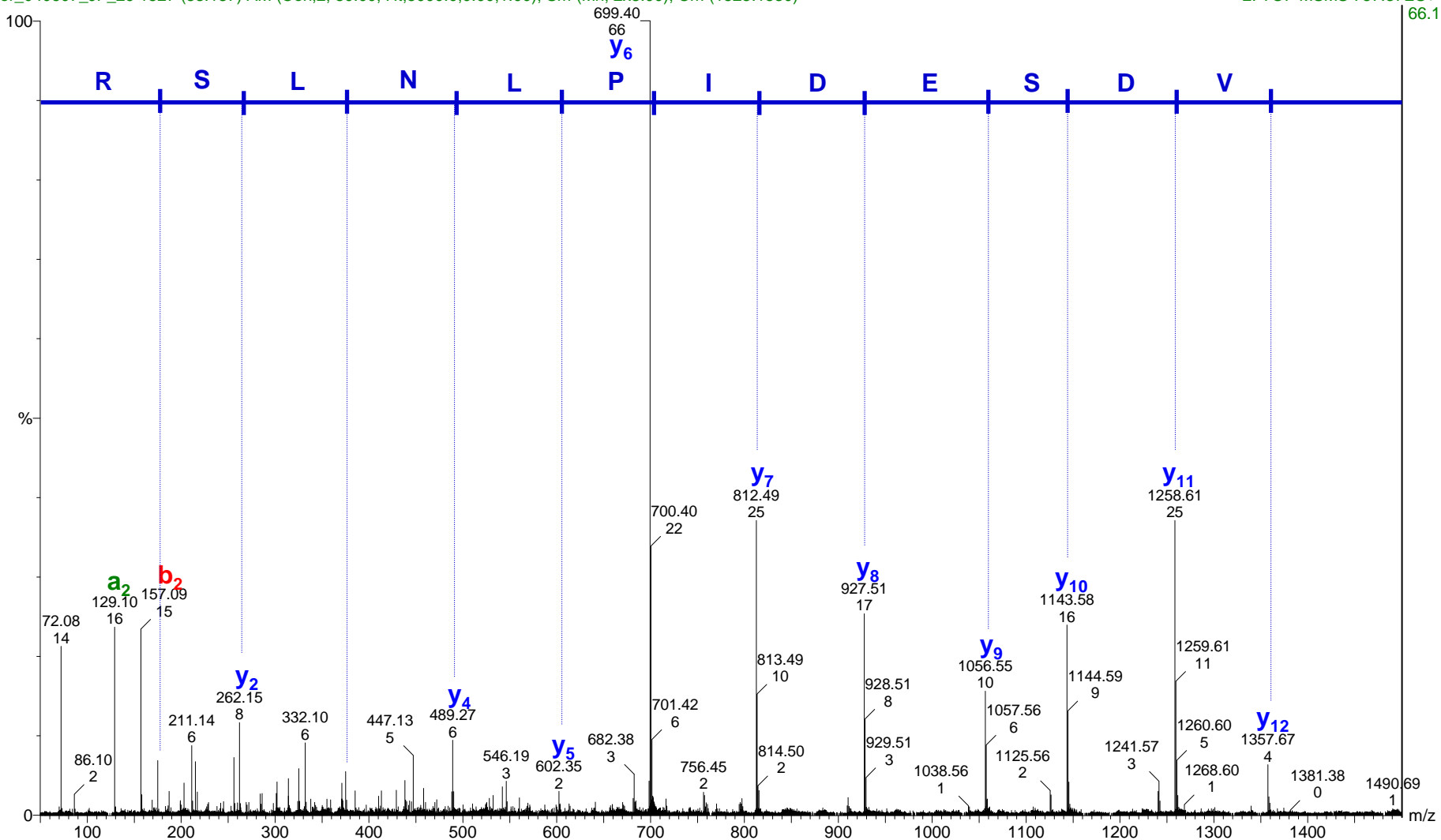


Protein Accession Number: TRAP1\_RAT  
Peptide Sequence: **GVVDS**E**DIPLNLSR**  
Peptide Score: 86  
Precursor Ion: 757.37  
Charge State: 2+

JF\_exosomas\_high

er\_040607\_JF\_29 1527 (53.187) AM (Cen,2, 80.00, Ht,5000.0,0.00,1.00); Sm (Mn, 2x3.00); Cm (1525:1530)

2: TOF MSMS 757.37ES+

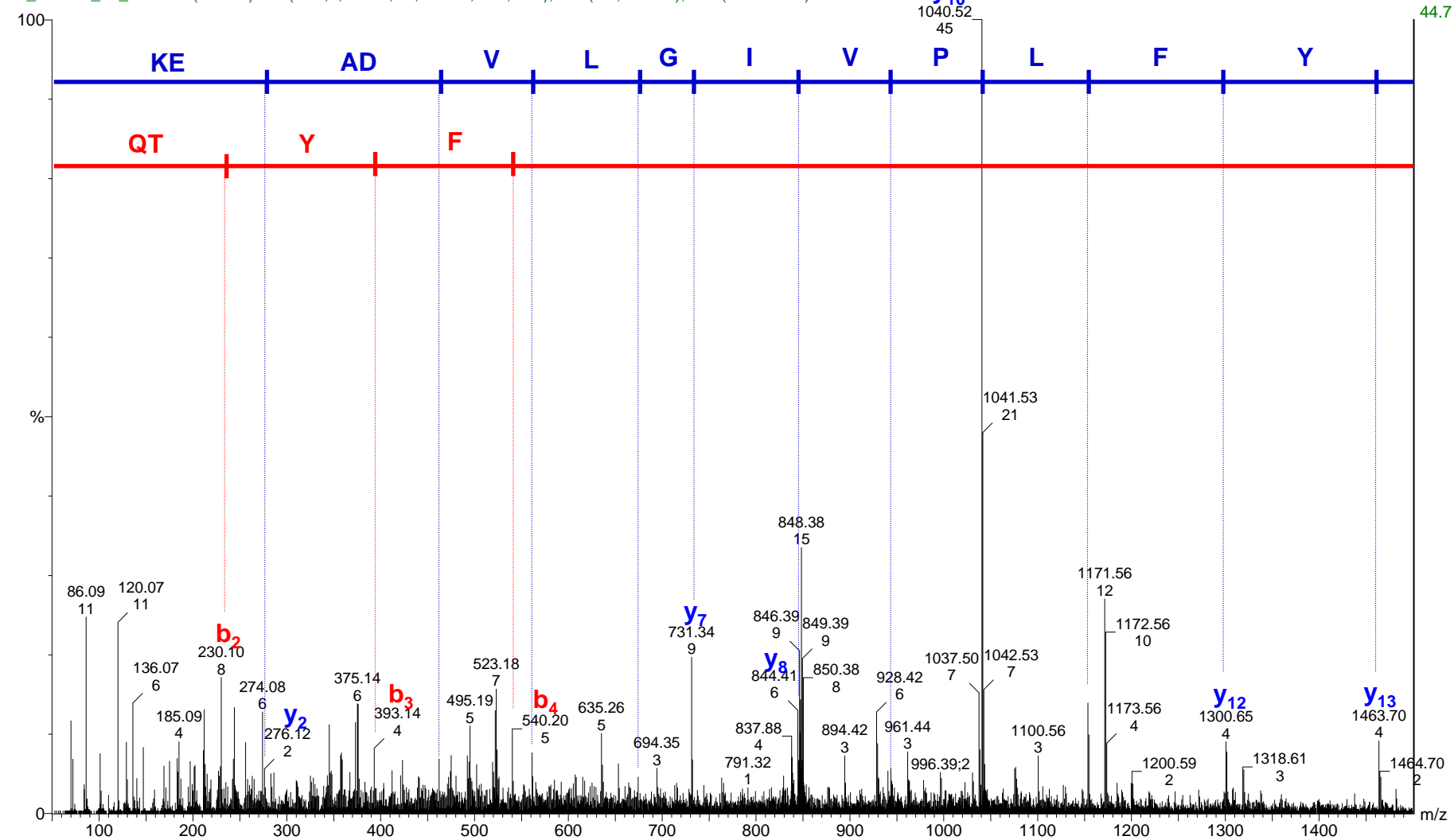


Protein Accession Number: PRS6A\_RAT  
Peptide Sequence: **QTYFLPVIQLVDAEK**  
Peptide Score: 52  
Precursor Ion: 846.90  
Charge State: 2+

JF\_EH

er\_061307\_JF\_47 1443 (57.506) AM (Cen,2, 80.00, Ht,5000.0,0.00,1.00); Sm (Mn, 2x3.00); Cm (1439:1444)

2: TOF MSMS 846.90ES+



Protein Accession Number: ACSL6\_RAT

Peptide Sequence: **ALRPTIFPVPR**

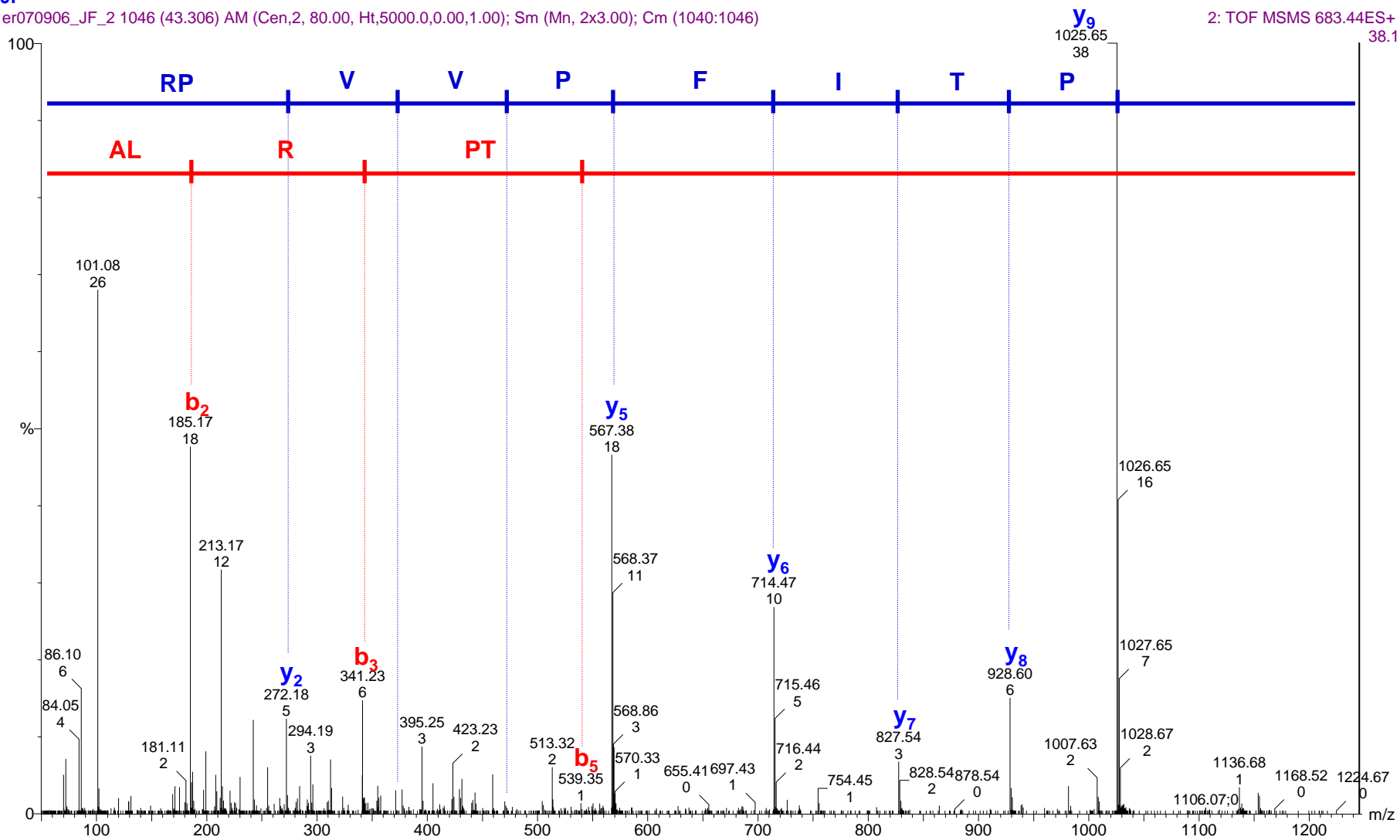
Peptide Score: 36

Precursor Ion: 683.44

Charge State: 2+

JF

er070906\_JF\_2 1046 (43.306) AM (Cen,2, 80.00, Ht,5000.0,0.00,1.00); Sm (Mn, 2x3.00); Cm (1040:1046)



Protein Accession Number: ACOX2\_RAT

Peptide Sequence: **EAFLDLLPLIR**

Peptide Score: 46

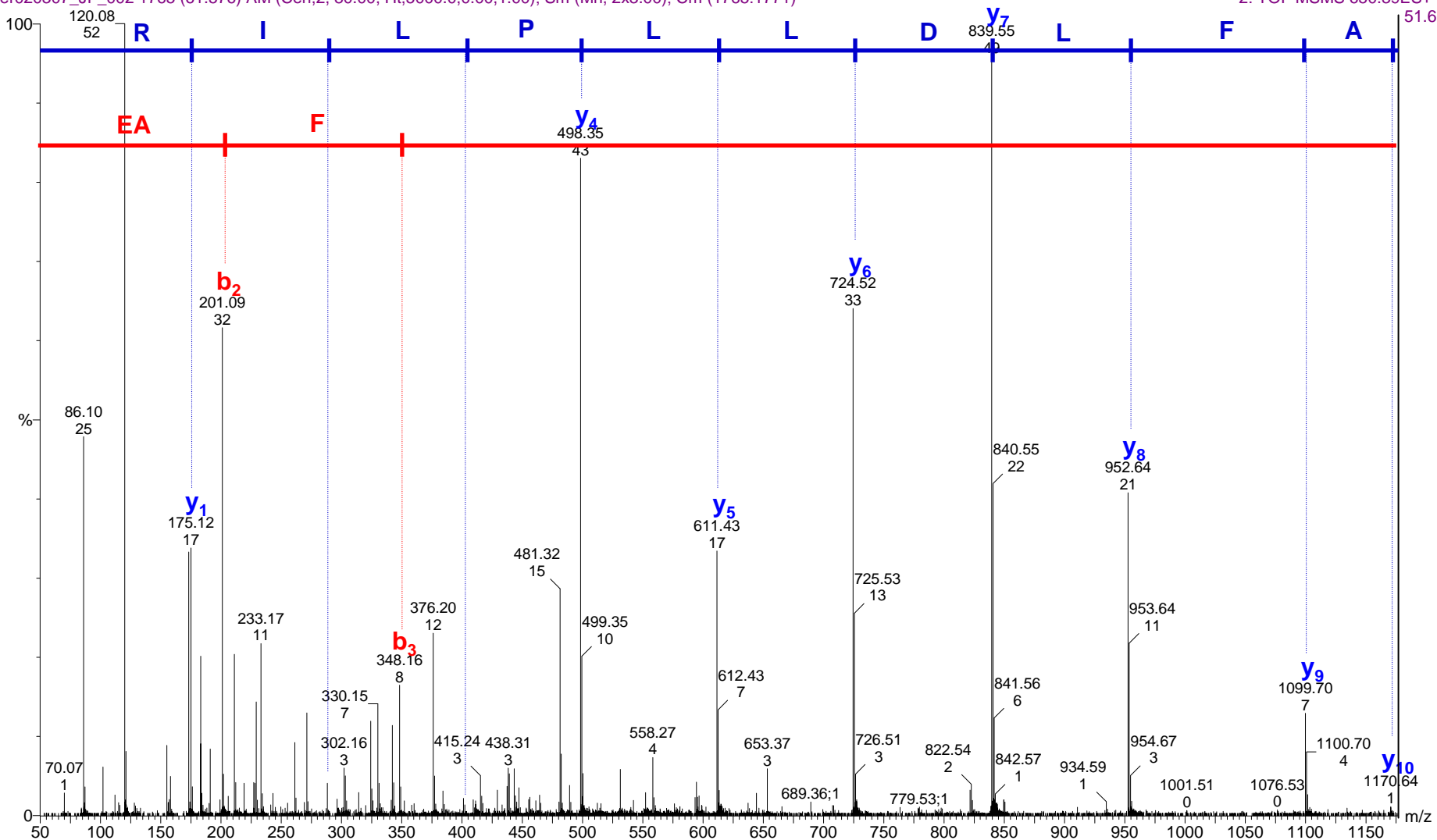
Precursor Ion: 650.39

Charge State: 2+

JF

er020307\_JF\_002 1765 (61.576) AM (Cen,2, 80.00, Ht,5000.0,0.00,1.00); Sm (Mn, 2x3.00); Cm (1765:1771)

2: TOF MSMS 650.39ES+



Protein Accession Number: LPP60\_RAT

Peptide Sequence: **LYPGIPASLVR**

Peptide Score: 53

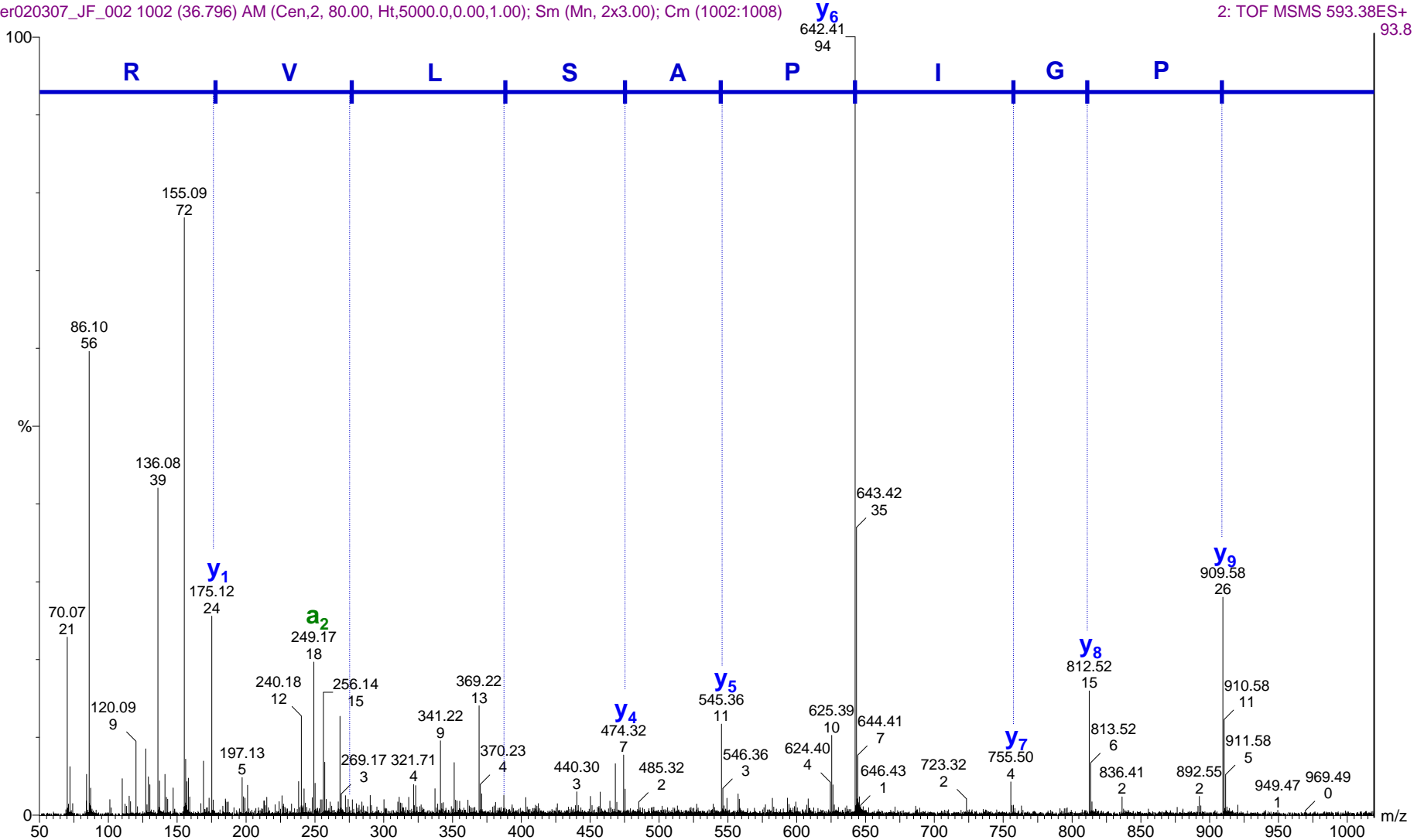
Precursor Ion: 593.38

Charge State: 2+

JF

er020307\_JF\_002 1002 (36.796) AM (Gen,2, 80.00, Ht,5000.0,0.00,1.00); Sm (Mn, 2x3.00); Cm (1002:1008)

2: TOF MSMS 593.38ES+ 93.8



Protein Accession Number: THIM\_RAT

Peptide Sequence: **DFTATDLTEFAAR**

Peptide Score: 51

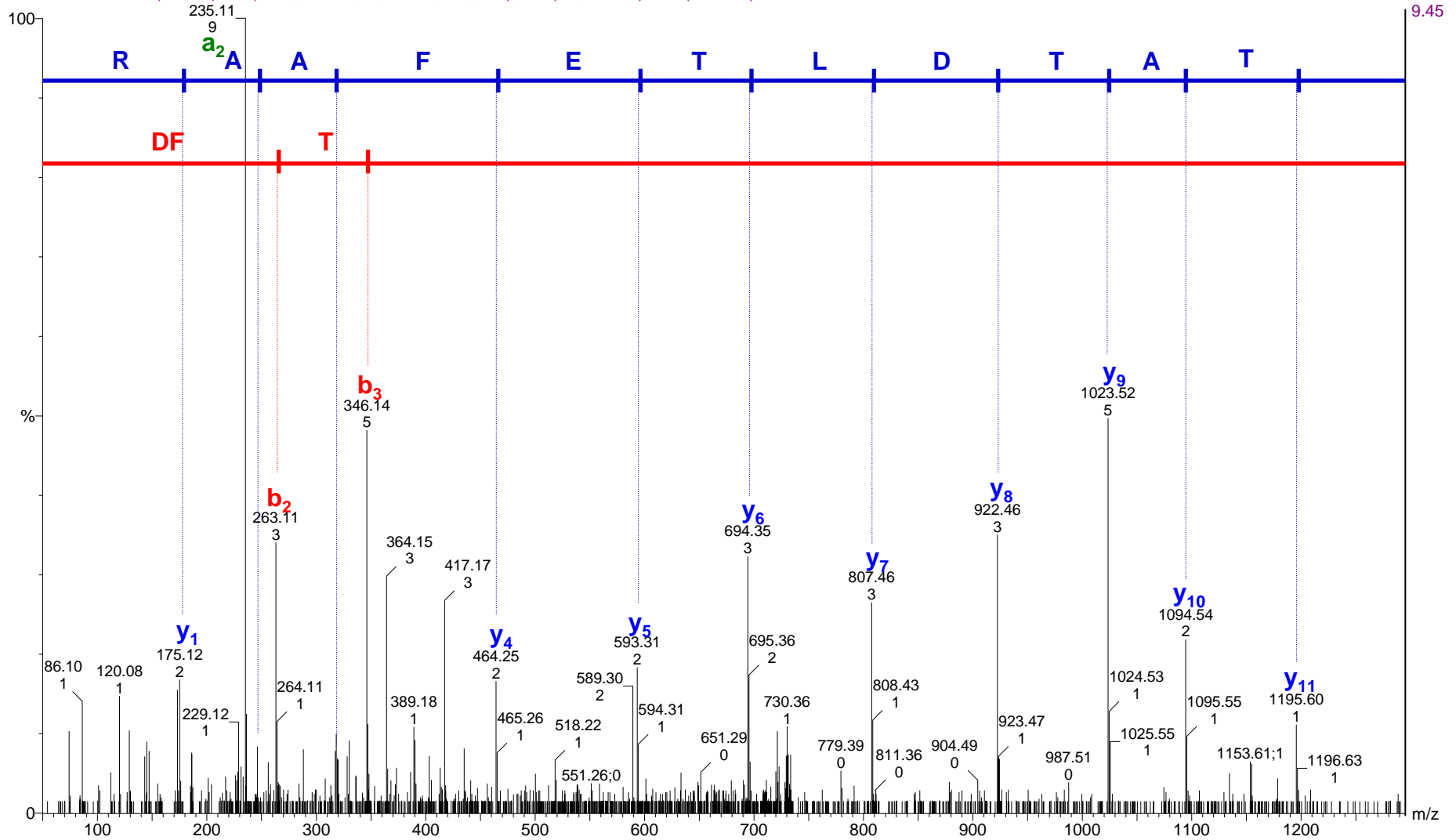
Precursor Ion: 729.37

Charge State: 2+

JF

er280906\_JF\_4 573 (35.819) AM (Cen,2, 80.00, Ht,5000.0,0.00,1.00); Sm (Mn, 2x3.00); Cm (573:579)

2: TOF MSMS 729.37ES+



Protein Accession Number: MET7B\_RAT

Peptide Sequence: **VTCVDPNPNFEK**

Peptide Score: 72

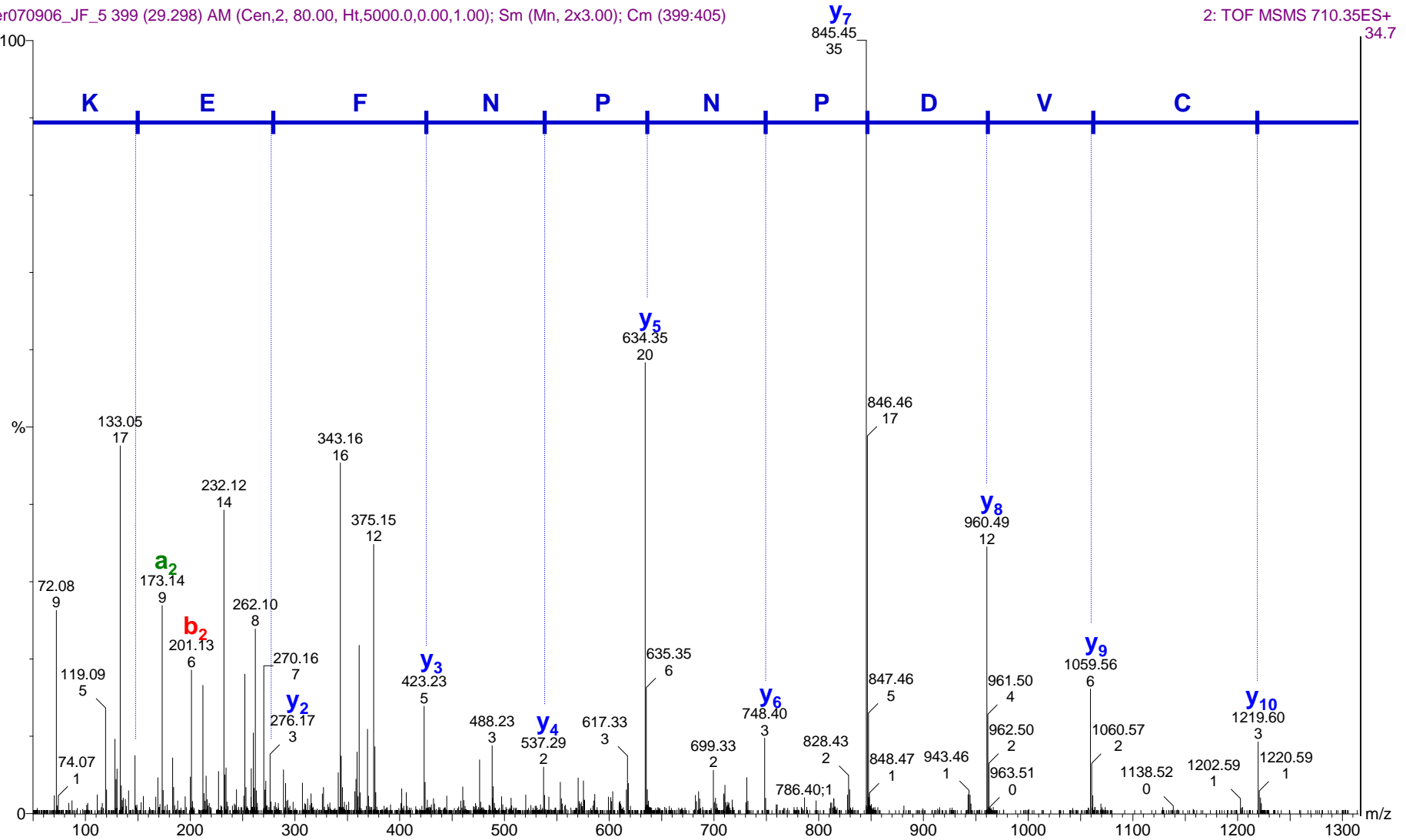
Precursor Ion: 710.35

Charge State: 2+

JF

er070906\_JF\_5 399 (29.298) AM (Cen,2, 80.00, Ht,5000.0,0.00,1.00); Sm (Mn, 2x3.00); Cm (399:405)

2: TOF MSMS 710.35ES+



Protein Accession Number: AL7A1\_RAT

Peptide Sequence: **ETFAPILYVFK**

Peptide Score: 35

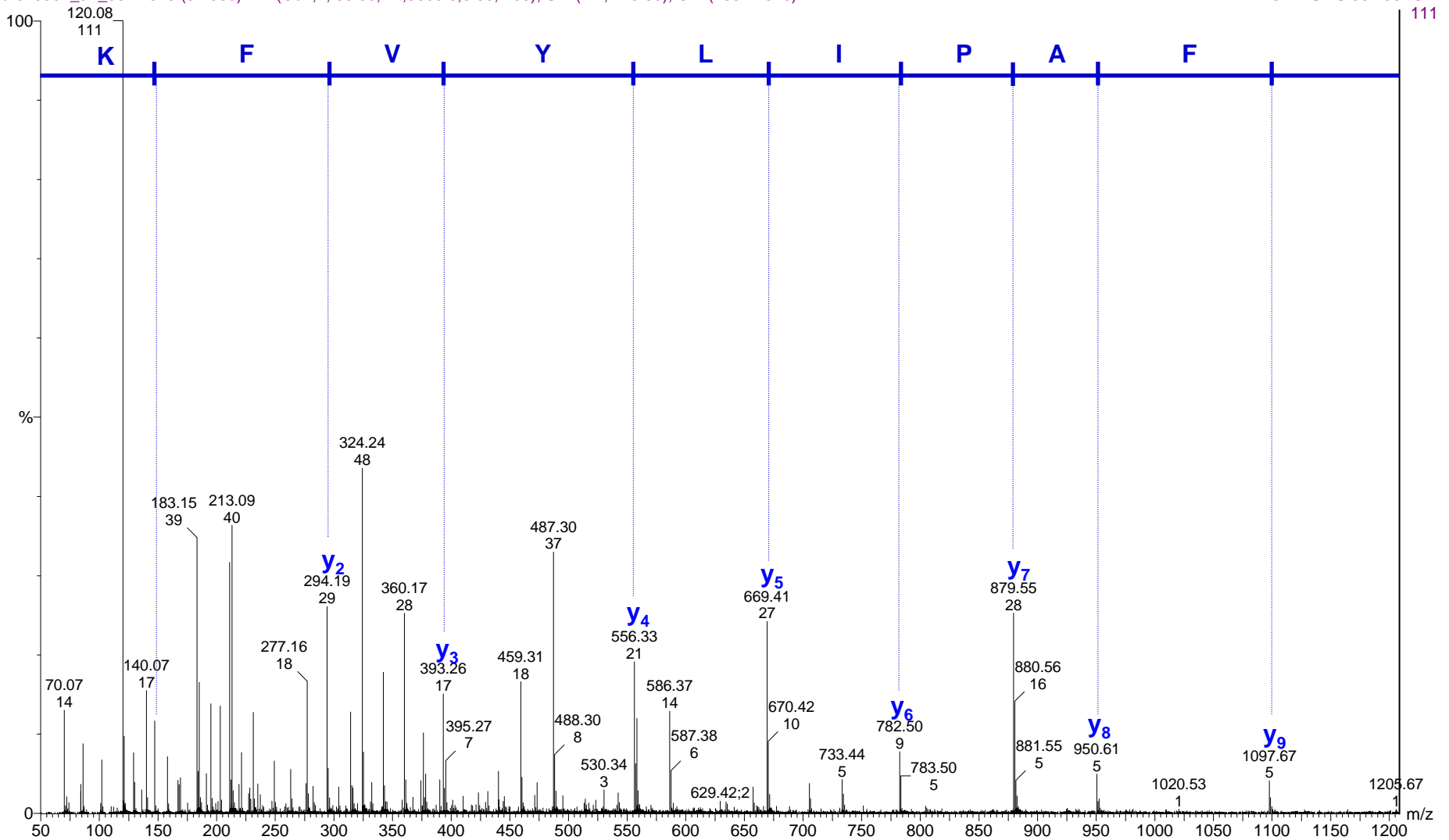
Precursor Ion: 664.38

Charge State: 2+

JF

er020307\_JF\_002 1540 (54.560) AM (Cen,2, 80.00, Ht,5000.0,0.00,1.00); Sm (Mn, 2x3.00); Cm (1534:1540)

2: TOF MSMS 664.38ES+





Protein Accession Number: AL1B1\_RAT

Peptide Sequence: **VAEQTPLSALYLALSLP**T

Peptide Score: 66

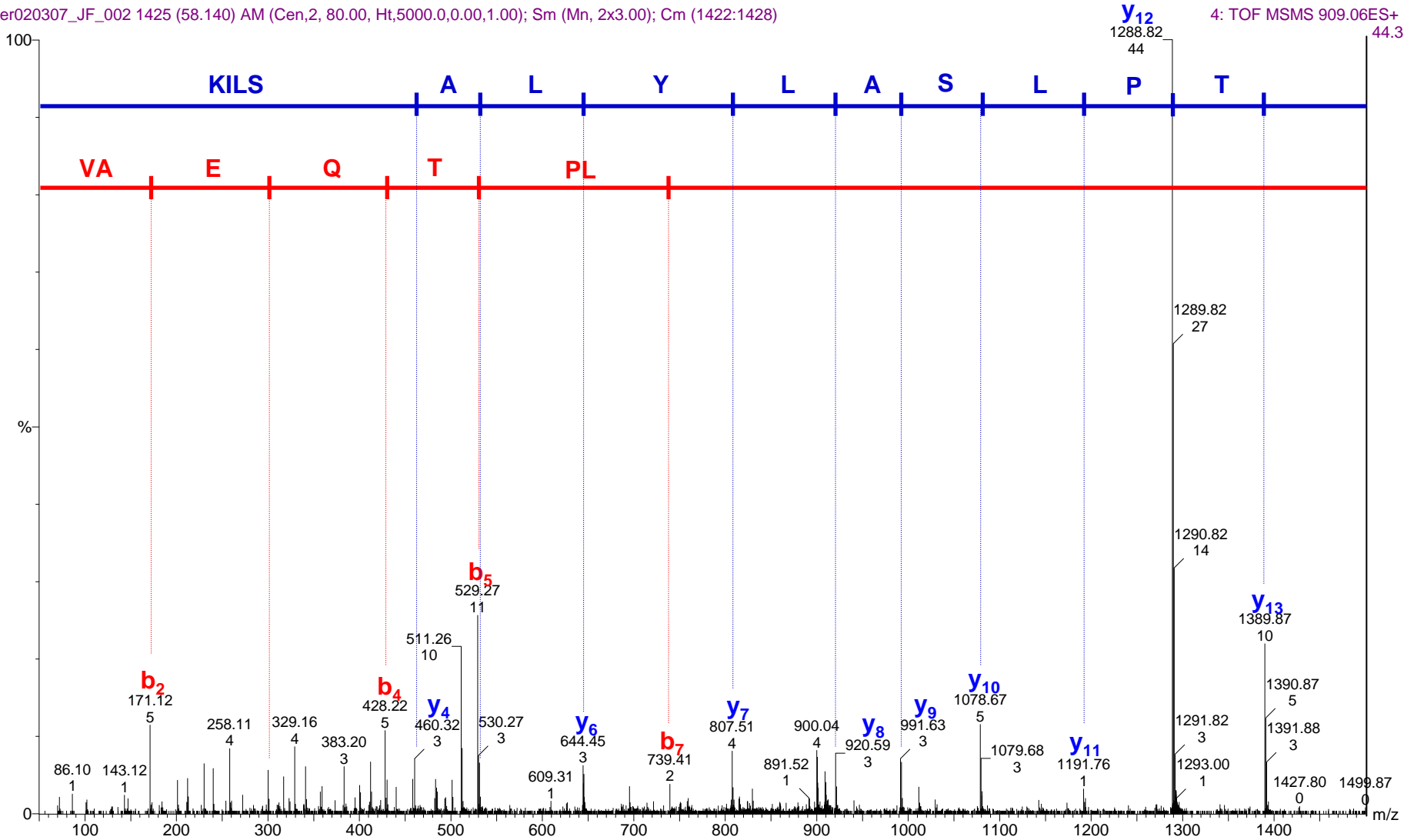
Precursor Ion: 909.06

Charge State: 2+

JF

er020307\_JF\_002 1425 (58.140) AM (Cen,2, 80.00, Ht,5000.0,0.00,1.00); Sm (Mn, 2x3.00); Cm (1422:1428)

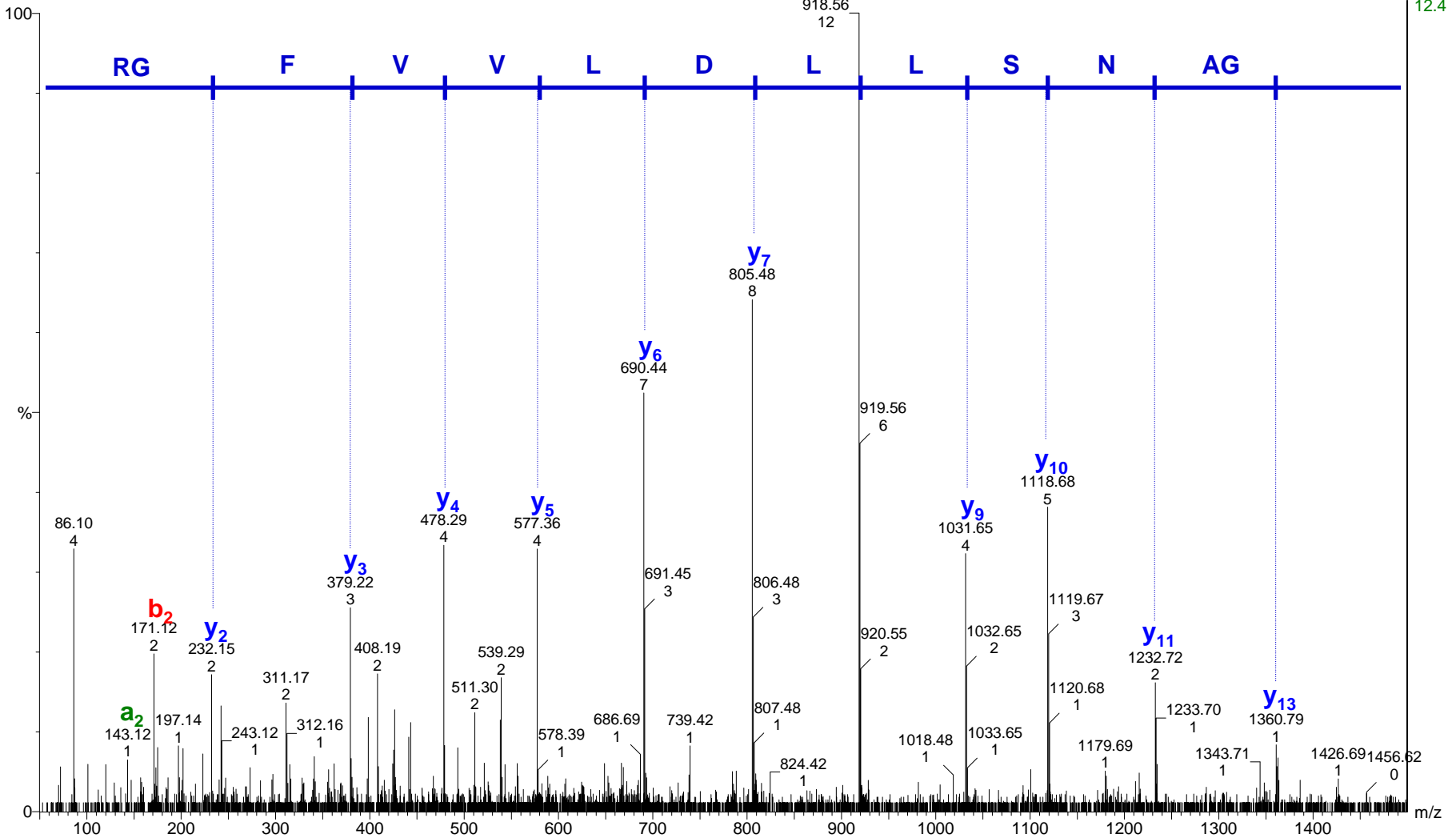
4: TOF MSMS 909.06ES+ 44.3



Protein Accession Number: DHSA\_RAT  
Peptide Sequence: **LGANSLDLVVFGR**  
Peptide Score: 90  
Precursor Ion: 737.43  
Charge State: 2+

JF

er020307\_JF\_002 1772 (61.807) AM (Cen,2, 80.00, Ht,5000.0,0.00,1.00); Sm (Mn, 2x3.00); Cm (1772:1778) **y<sub>8</sub>** 2: TOF MSMS 737.43ES+ 12.4

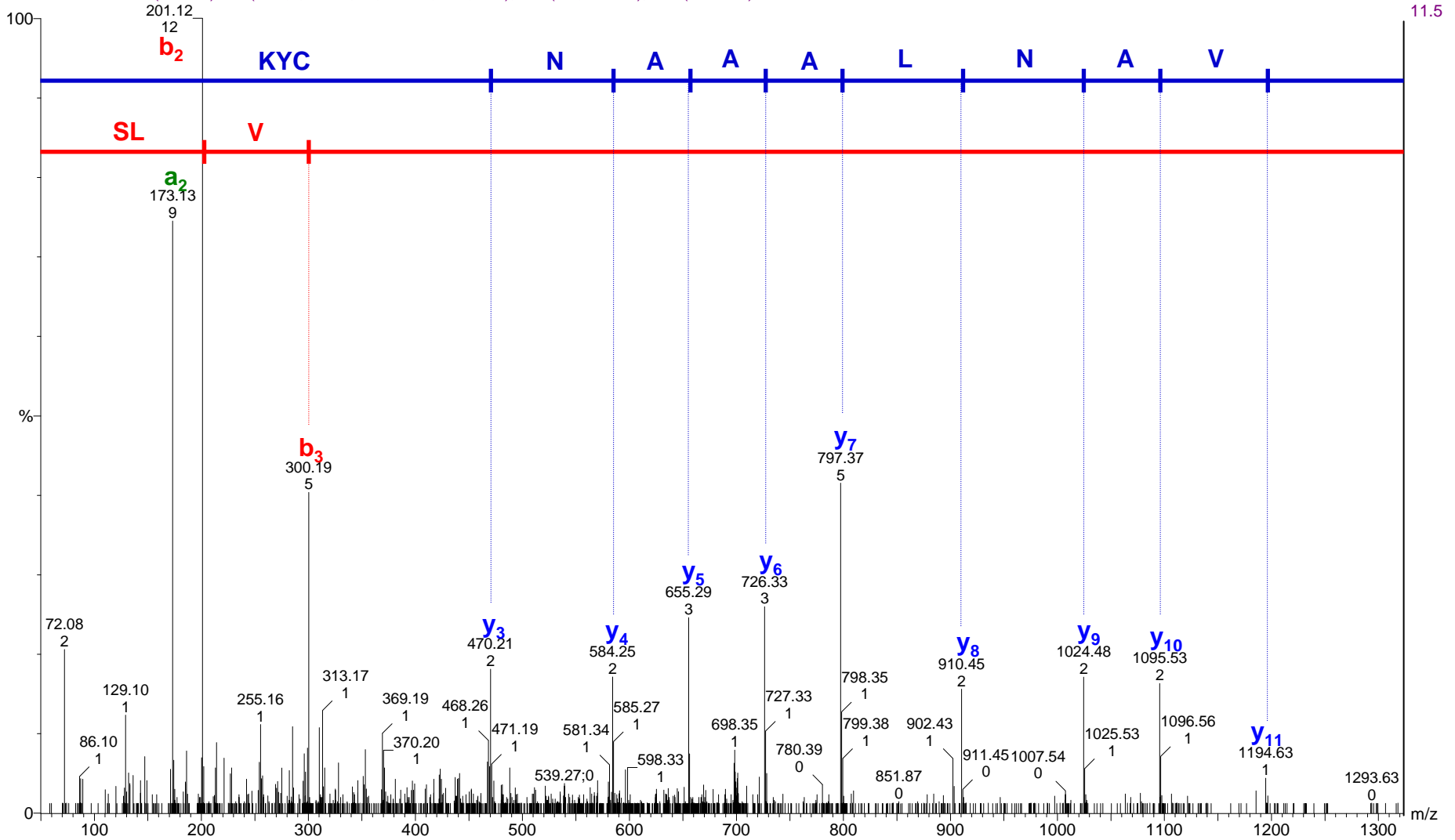


Protein Accession Number: ADK\_RAT  
Peptide Sequence: **SLVANLAAANCYK**  
Peptide Score: 48  
Precursor Ion: 697.87  
Charge State: 2+

JF

er280906\_JF\_4 440 (31.572) AM (Cen,2, 80.00, Ht,5000.0,0.00,1.00); Sm (Mn, 2x3.00); Cm (440:446)

2: TOF MSMS 697.87ES+



Protein Accession Number: SARDH\_RAT

Peptide Sequence: **DPSGGPVSLDFVK**

Peptide Score: 75

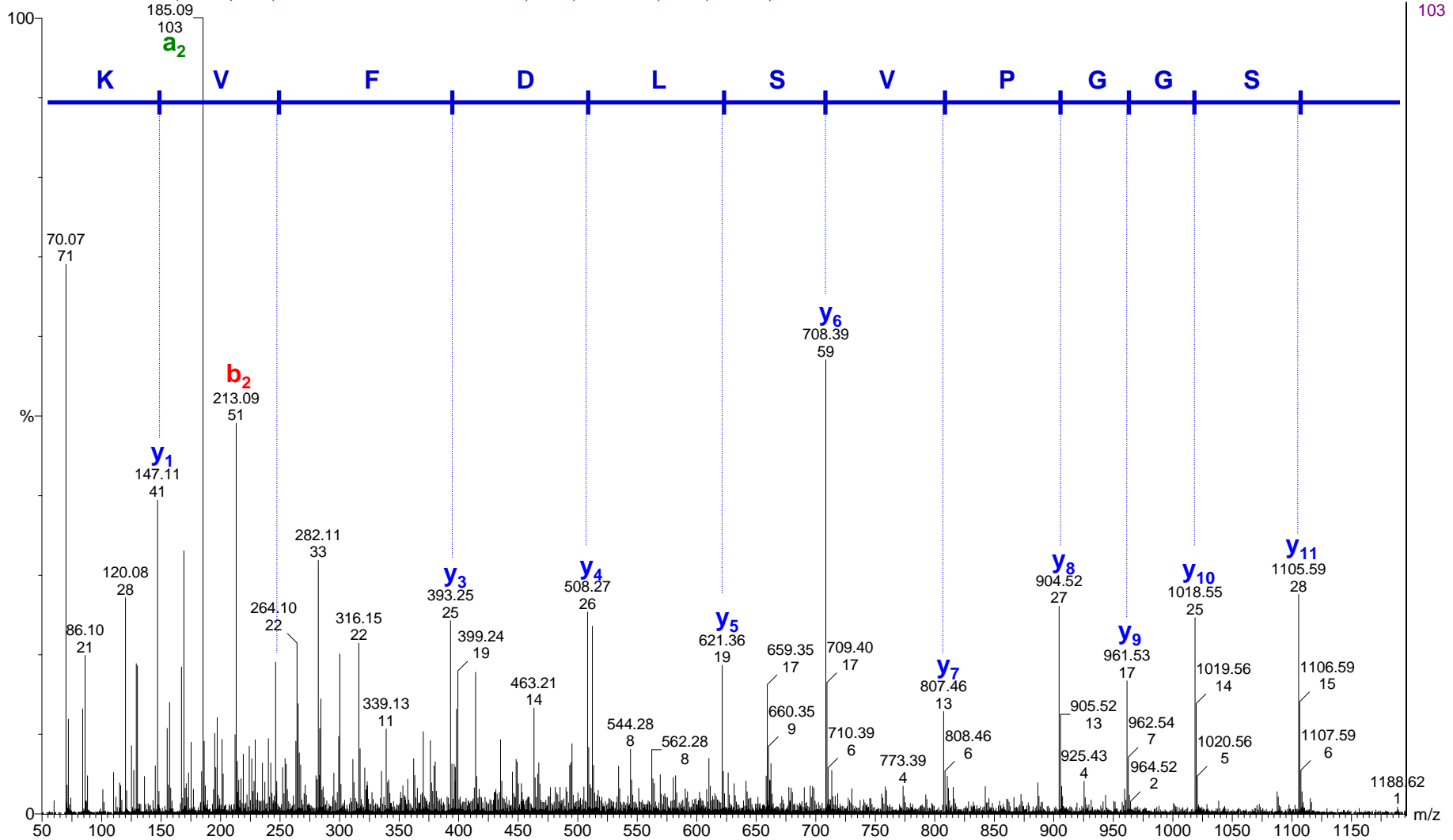
Precursor Ion: 659.34

Charge State: 2+

JF

er020307\_JF\_003 766 (34.313) AM (Cen,2, 80.00, Ht,5000.0,0.00,1.00); Sm (Mn, 2x3.00); Cm (764:770)

3: TOF MSMS 659.34ES+



Protein Accession Number: COX41\_RAT

Peptide Sequence: **SEDYALPSYVDR**

Peptide Score: 32

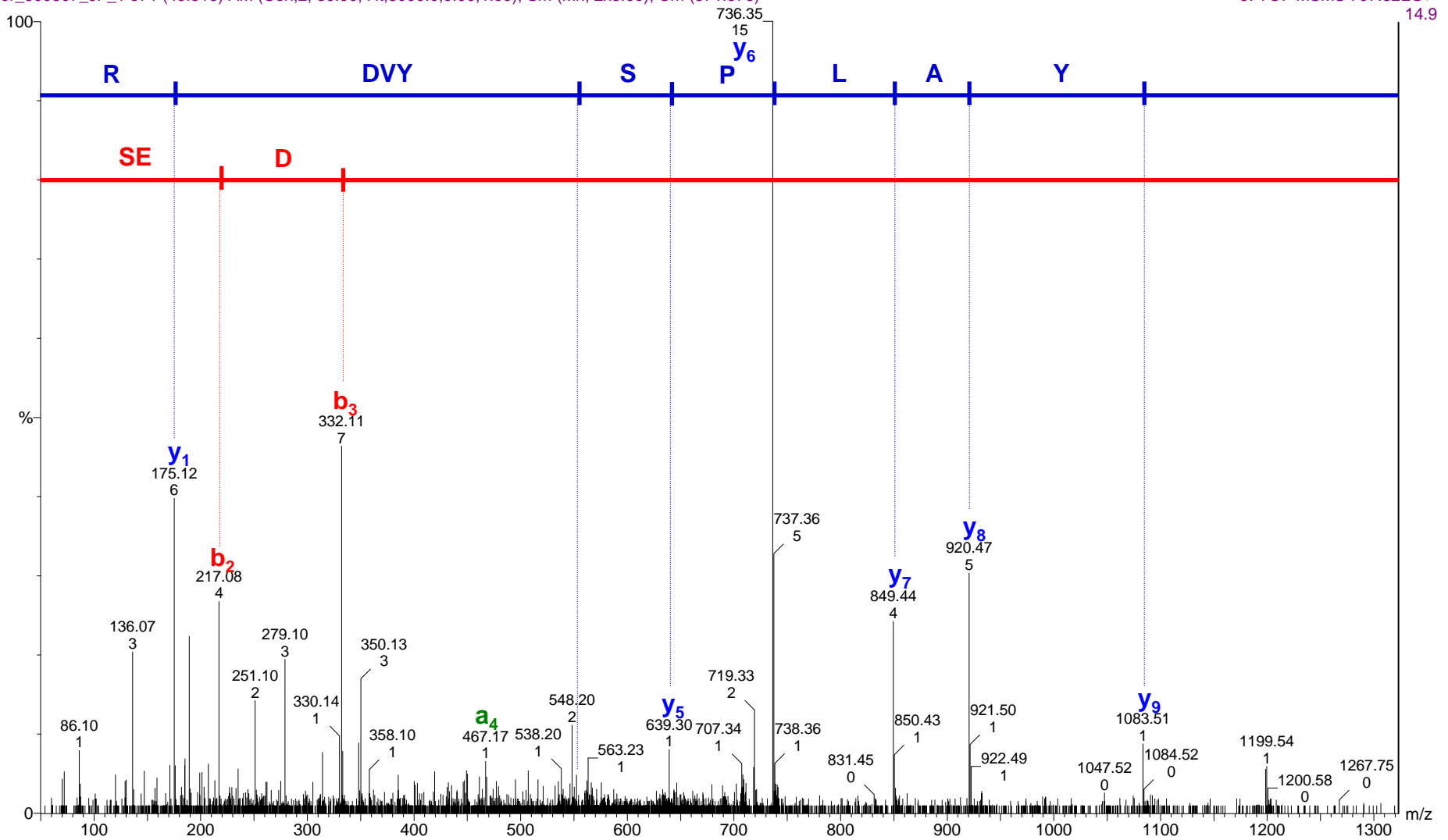
Precursor Ion: 707.82

Charge State: 2+

JF\_exosomas\_high

er\_300507\_JF\_1 571 (49.515) AM (Gen,2, 80.00, Ht,5000.0,0.00,1.00); Sm (Mn, 2x3.00); Cm (571:576)

3: TOF MSMS 707.82ES+

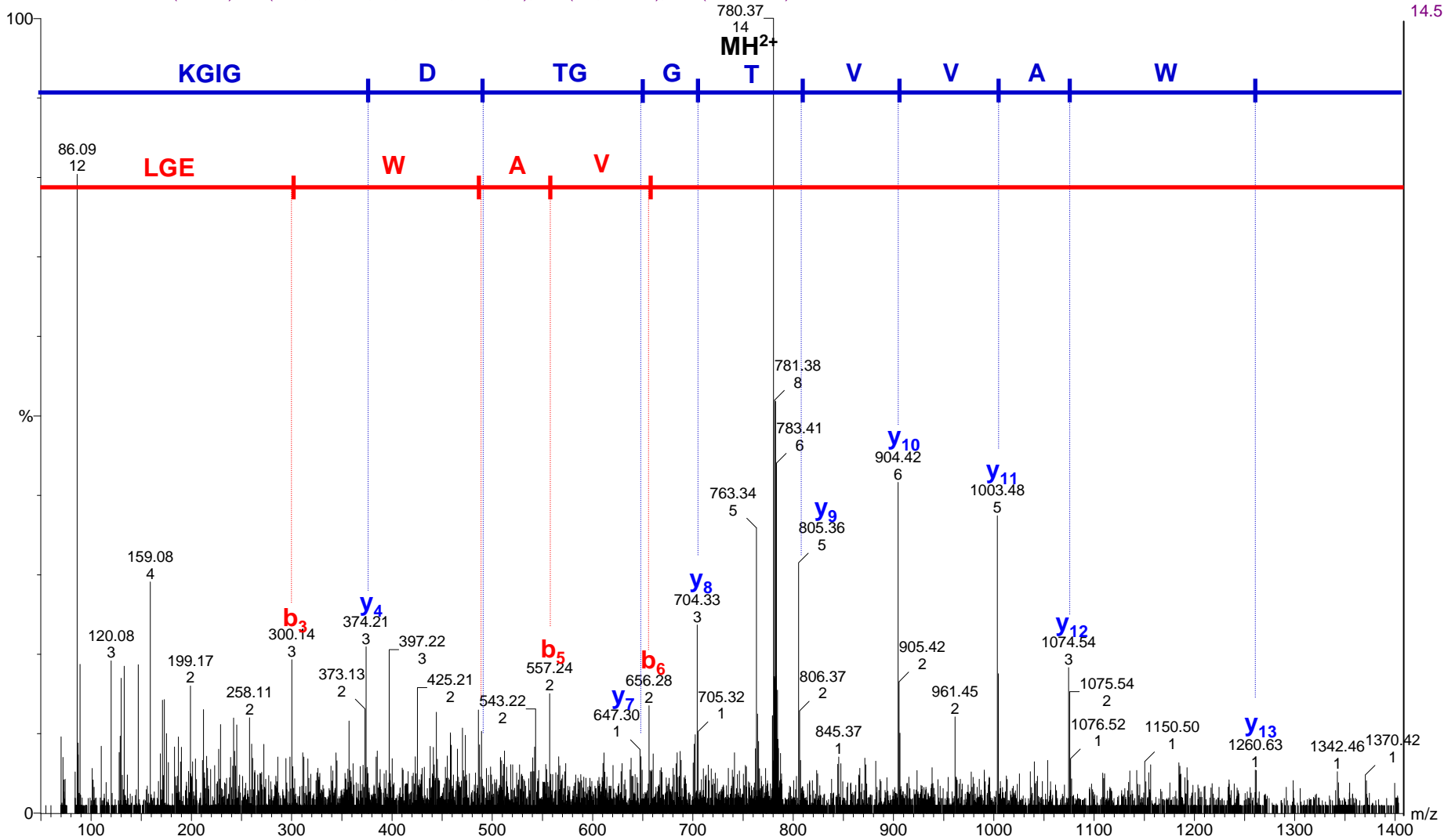


Protein Accession Number: DHB12\_RAT  
Peptide Sequence: **LGEWAVVTGGTDGIGK**  
Peptide Score: 38  
Precursor Ion: 780.36  
Charge State: 2+

**JF\_exosomas\_high**

er\_300507\_JF\_8 1086 (57.742) AM (Cen,2, 80.00, Ht,5000.0,0.00,1.00); Sm (Mn, 2x3.00); Cm (1086:1091)

4: TOF MSMS 780.36ES+ 14.5

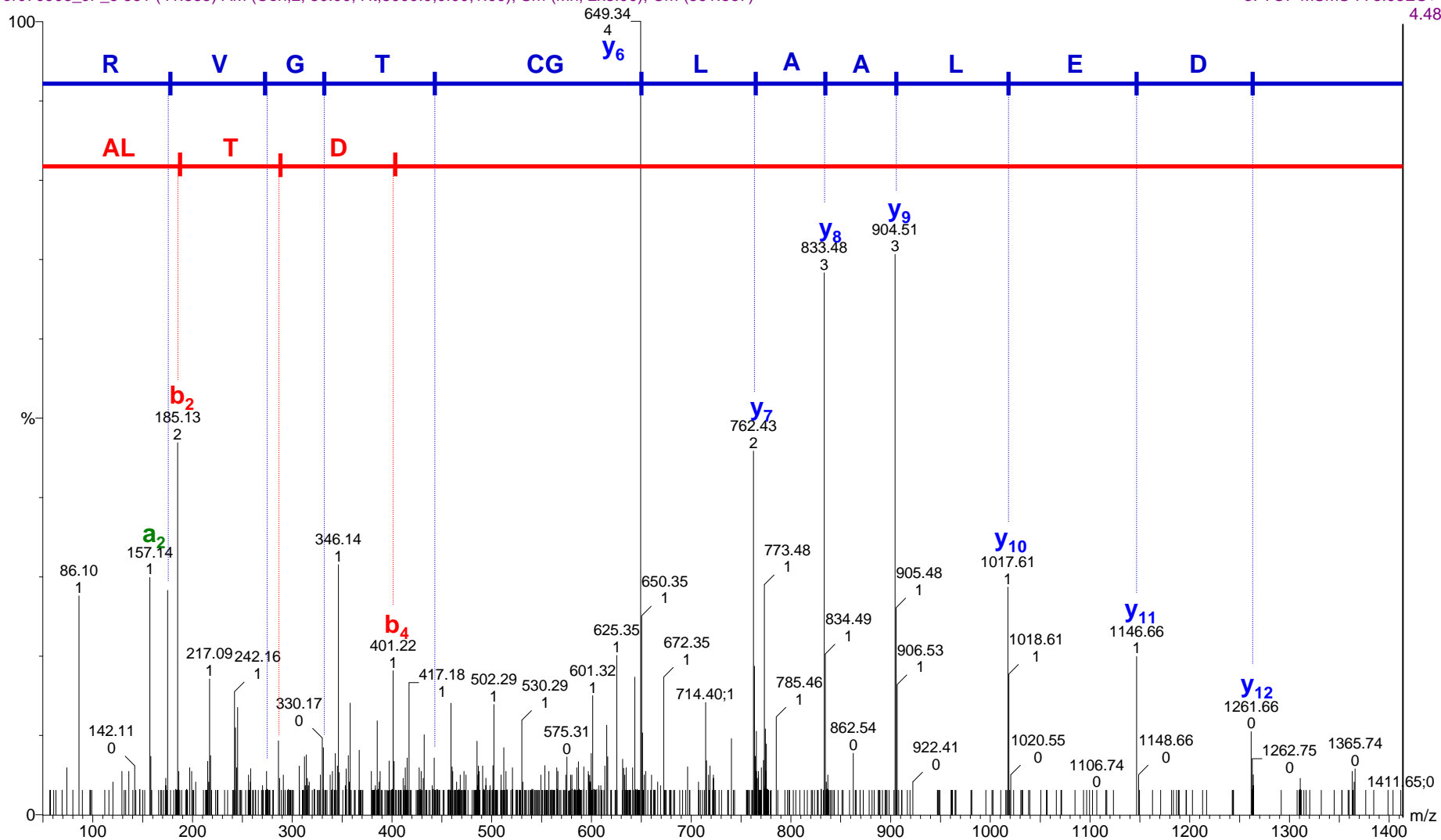


Protein Accession Number: DHRS8\_RAT  
Peptide Sequence: **ALTDELAALGCTGVR**  
Peptide Score: 43  
Precursor Ion: 773.93  
Charge State: 2+

JF

er070906\_JF\_5 561 (41.585) AM (Cen,2, 80.00, Ht,5000.0,0.00,1.00); Sm (Mn, 2x3.00); Cm (561:567)

3: TOF MSMS 773.93ES+



Protein Accession Number: RETST\_RAT

Peptide Sequence: **ATVQSVLLDSAGR**

Peptide Score: 74

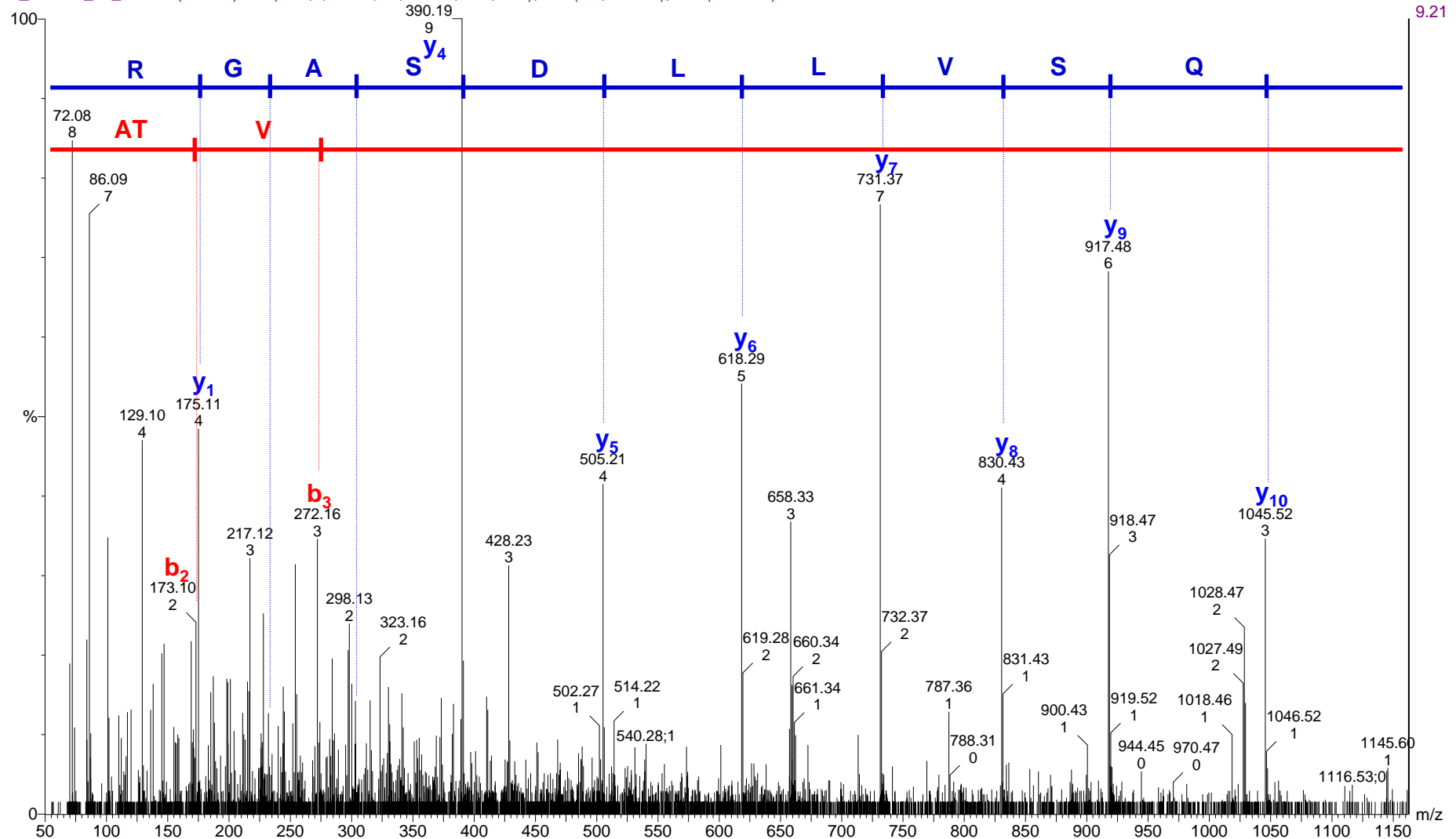
Precursor Ion: 658.84

Charge State: 2+

JF\_exosomas\_high

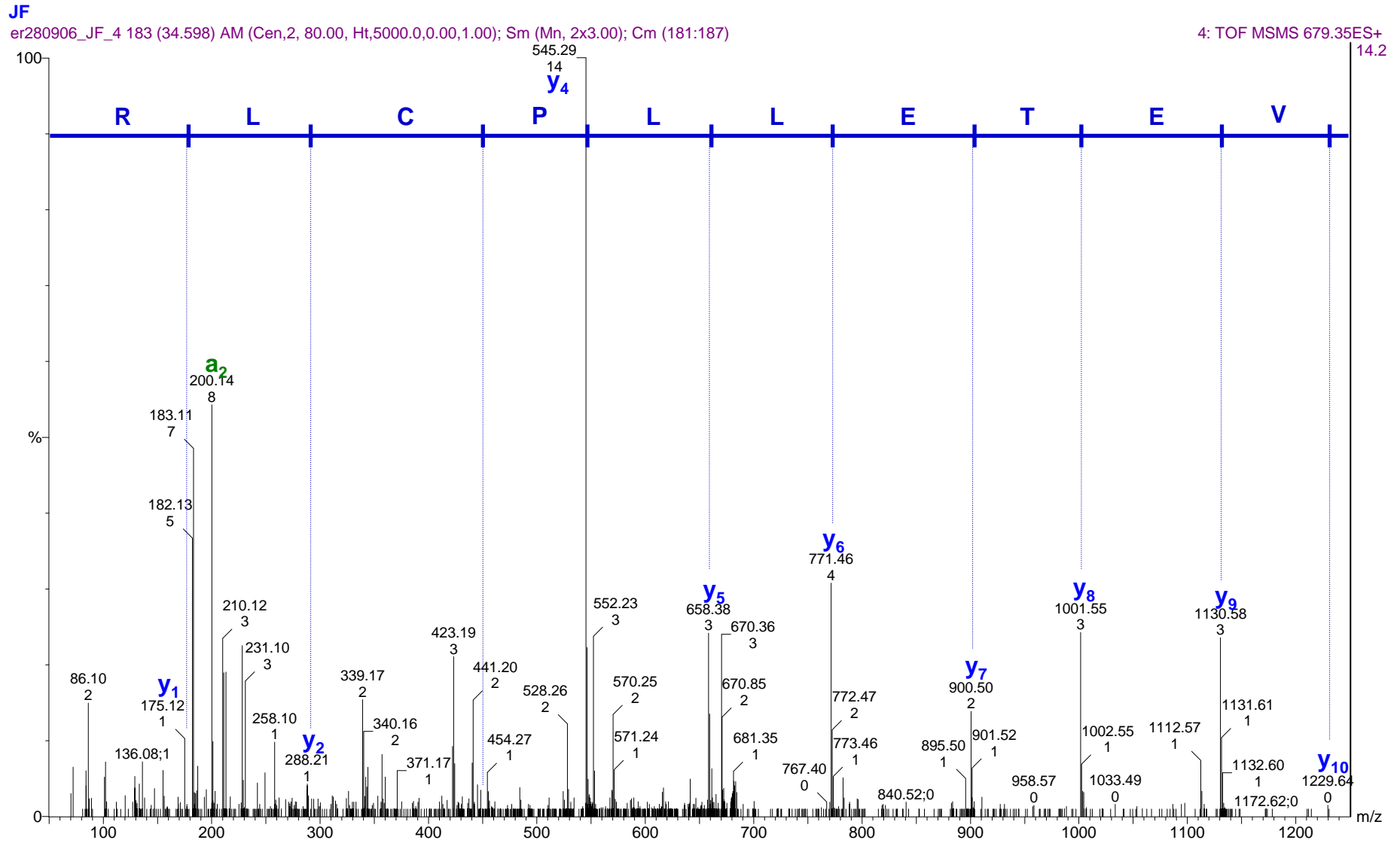
er\_300507\_JF\_22\_969 (54.008) AM (Cen,2, 80.00, Ht,5000.0,0.00,1.00); Sm (Mn, 2x3.00); Cm (969:974)

4: TOF MSMS 658.84ES+





Protein Accession Number: ARK72\_RAT  
Peptide Sequence: **QVETELLPCR**  
Peptide Score: 46  
Precursor Ion: 679.35  
Charge State: 2+

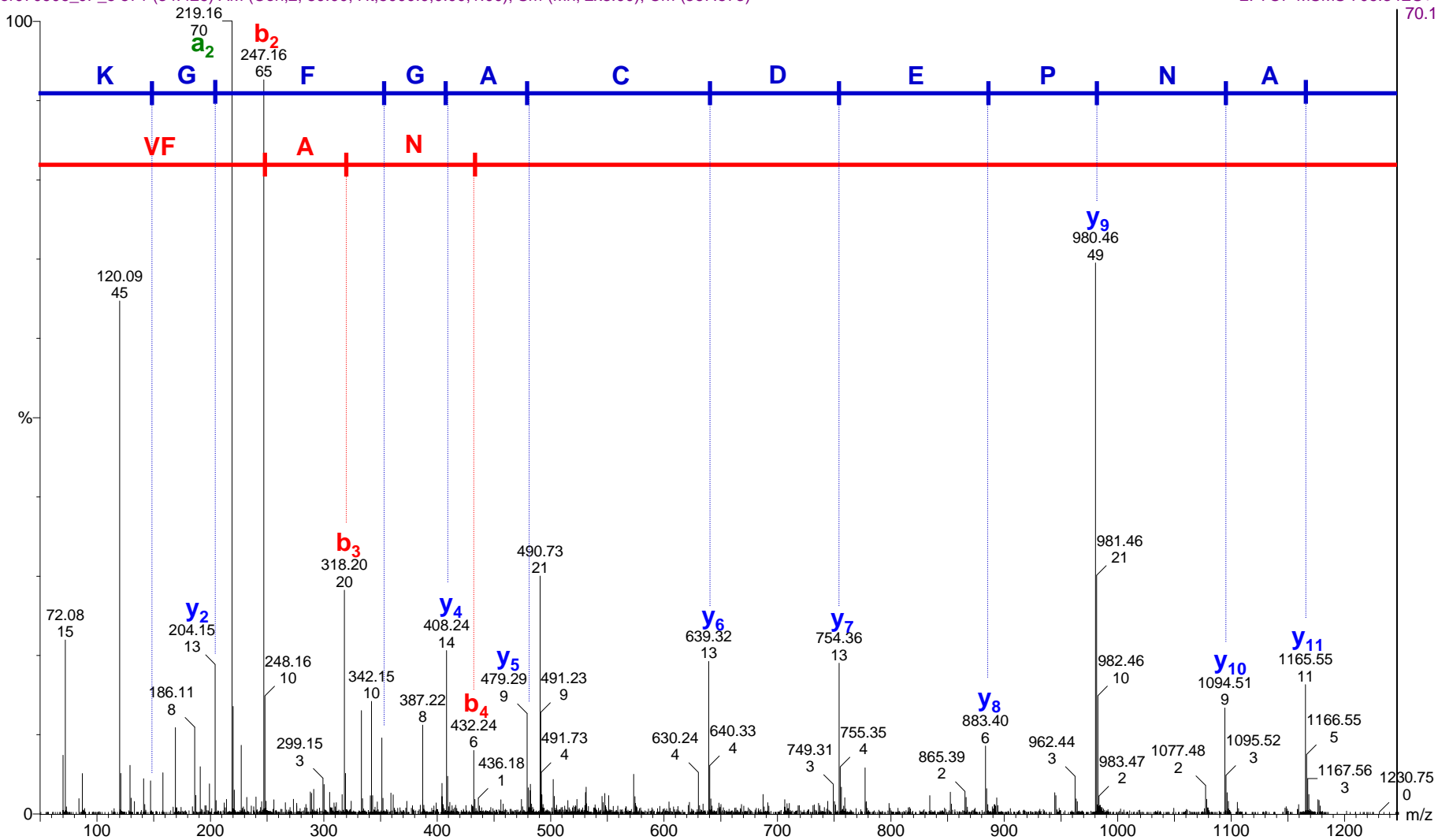


Protein Accession Number: MGST1\_RAT  
Peptide Sequence: **VFANPEDCAGFGK**  
Peptide Score: 75  
Precursor Ion: 706.34  
Charge State: 2+

JF

er070906\_JF\_5 571 (34.426) AM (Cen,2, 80.00, Ht,5000.0,0.00,1.00); Sm (Mn, 2x3.00); Cm (567:573)

2: TOF MSMS 706.34ES+



Protein Accession Number: ST1A1\_RAT

Peptide Sequence: **NTFTVAQNER**

Peptide Score: 46

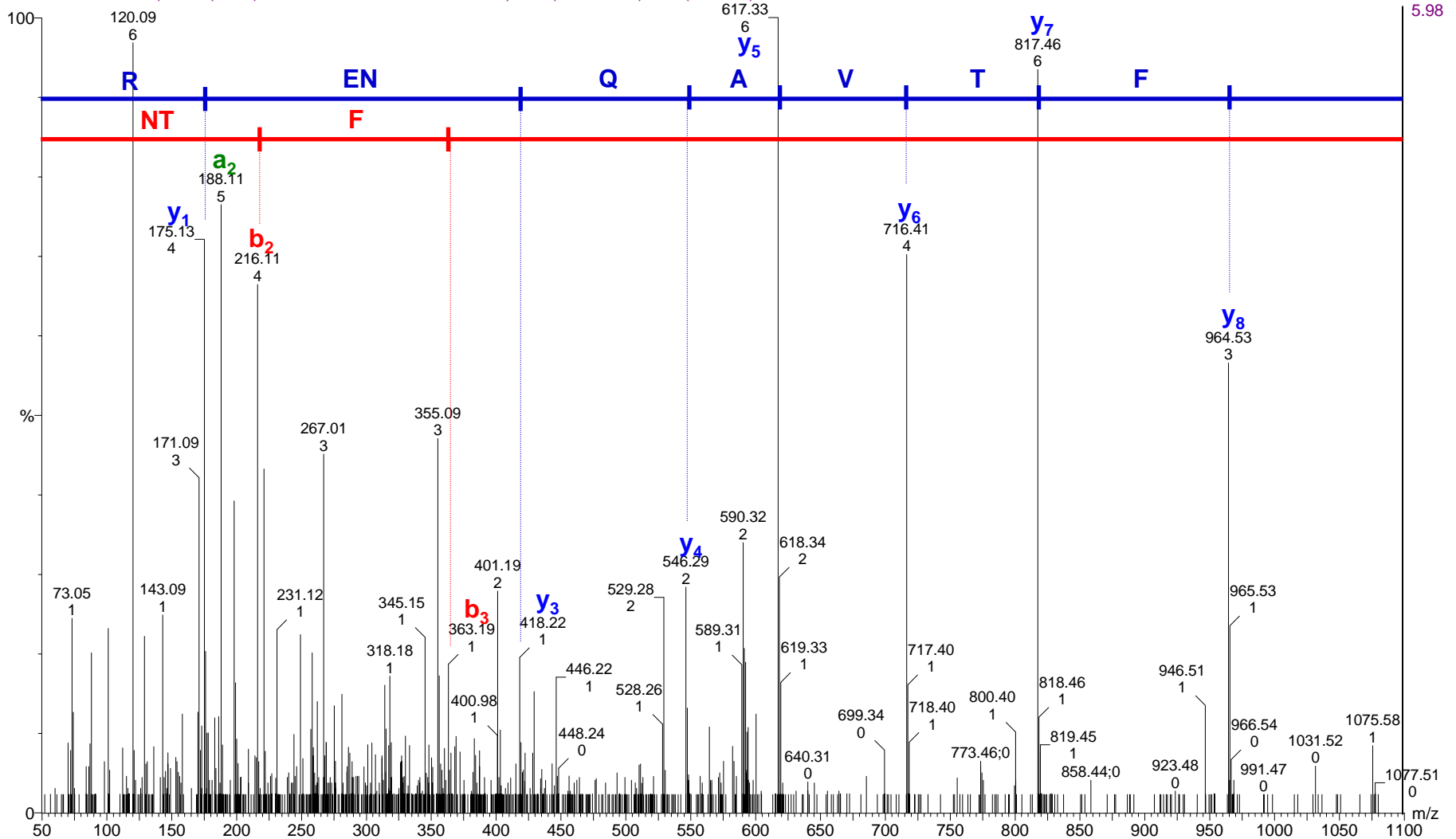
Precursor Ion: 706.34

Charge State: 2+

JF

er070906\_JF\_5 147 (27.845) AM (Cen,2, 80.00, Ht,5000.0,0.00,1.00); Sm (Mn, 2x3.00); Cm (141:147)

3: TOF MSMS 590.32ES+



Protein Accession Number: FMO5\_RAT

Peptide Sequence: **GYPIDILLSSR**

Peptide Score: 43

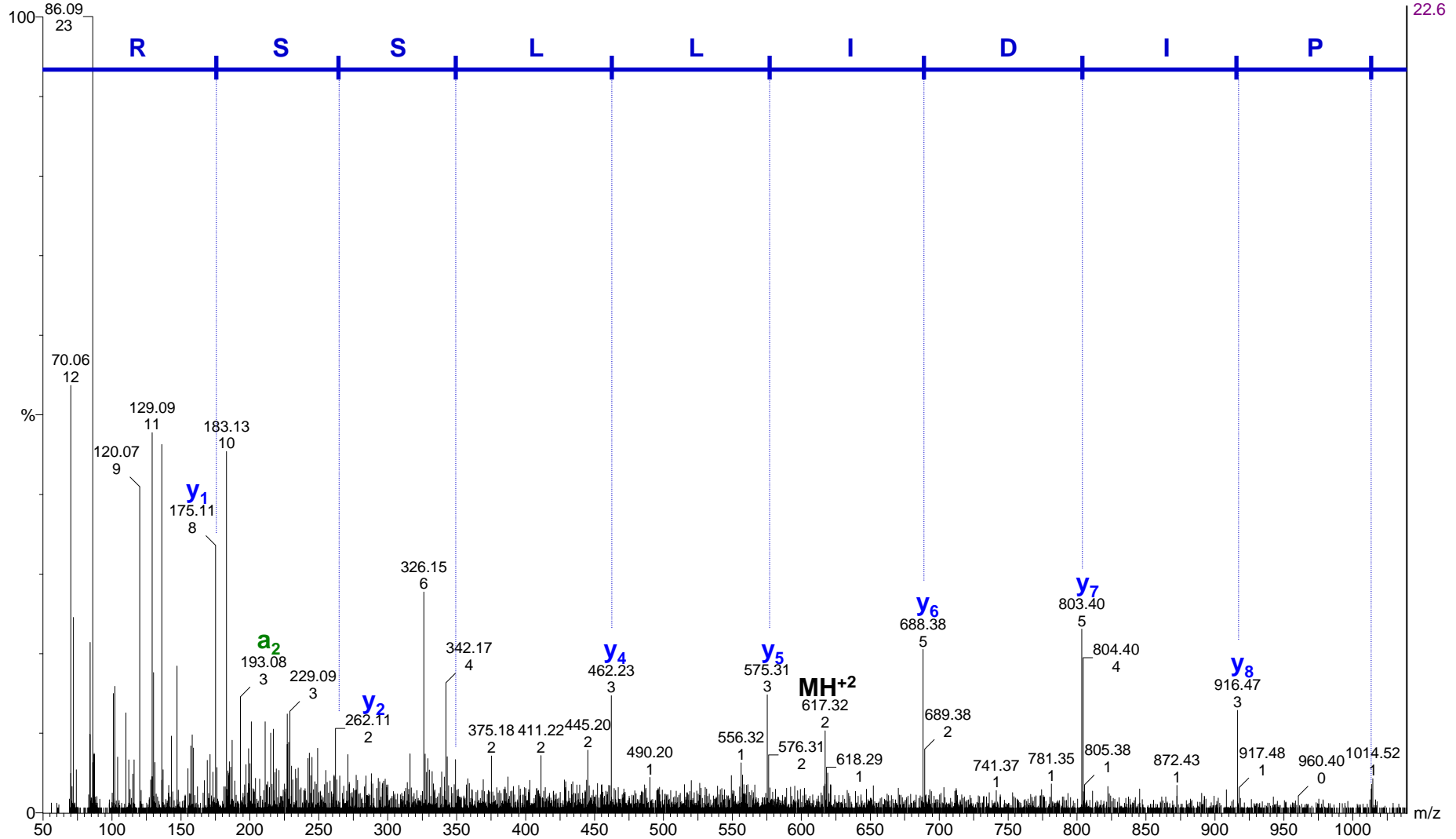
Precursor Ion: 617.30

Charge State: 2+

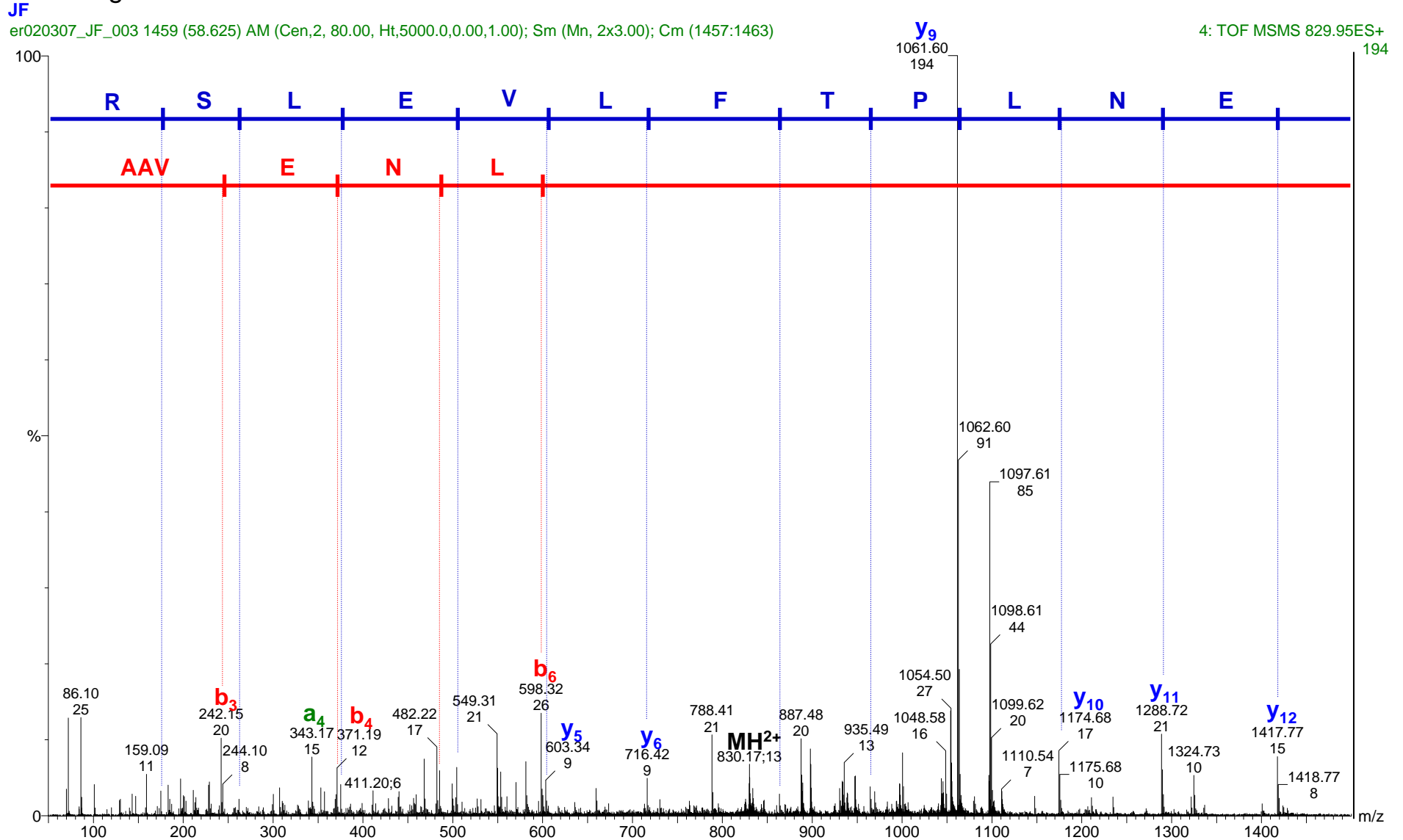
JF\_EH

er\_061307\_JF\_47 1034 (50.923) AM (Cen,2, 80.00, Ht,5000.0,0.00,1.00); Sm (Mn, 2x3.00); Cm (1034:1039)

4: TOF MSMS 617.30ES+



Protein Accession Number: IMB1\_RAT  
Peptide Sequence: **AAVENLPTFLVELSR**  
Peptide Score: 45  
Precursor Ion: 829.95  
Charge State: 2+



Protein Accession Number: LRC46\_RAT

Peptide Sequence: **ATSSTQMASSSK**

Peptide Score: 32

Precursor Ion: 593.22

Charge State: 2+

JF\_exosomas\_high

er\_040607\_JF\_34 1382 (32.926) AM (Cen,2, 80.00, Ht,5000.0,0.00,1.00); Sm (Mn, 2x3.00); Cm (1381:1386)

2: TOF MSMS 593.22ES+ 3.89

