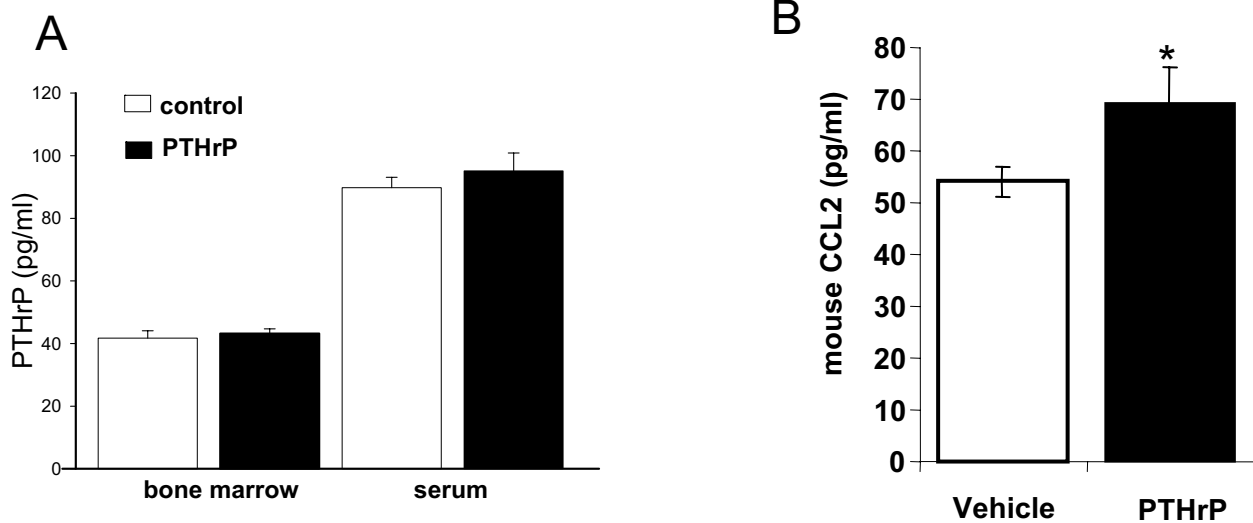
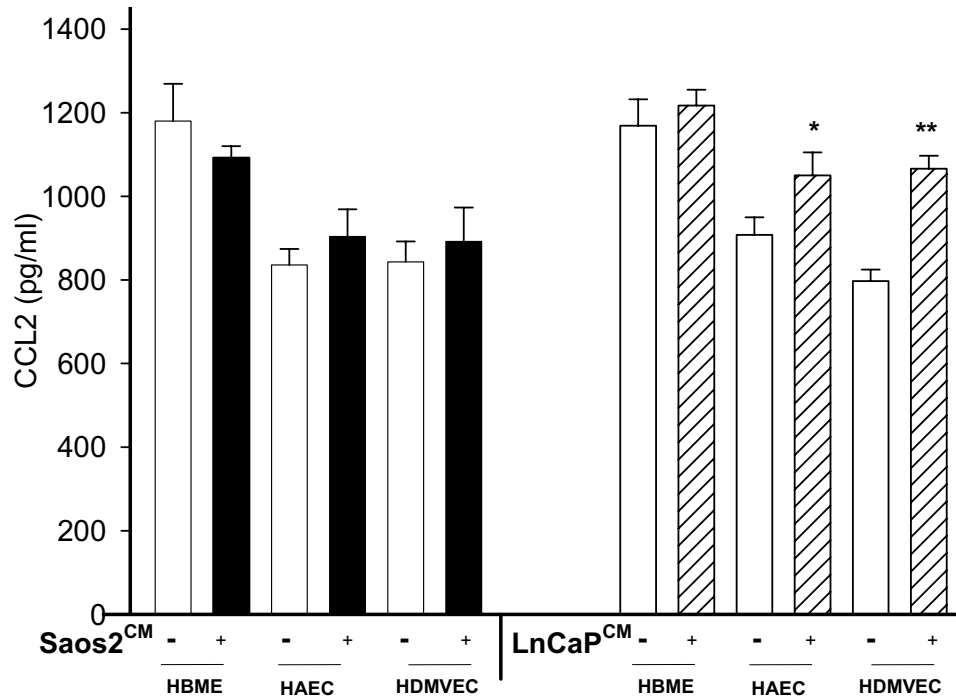


Supplementary figure 1



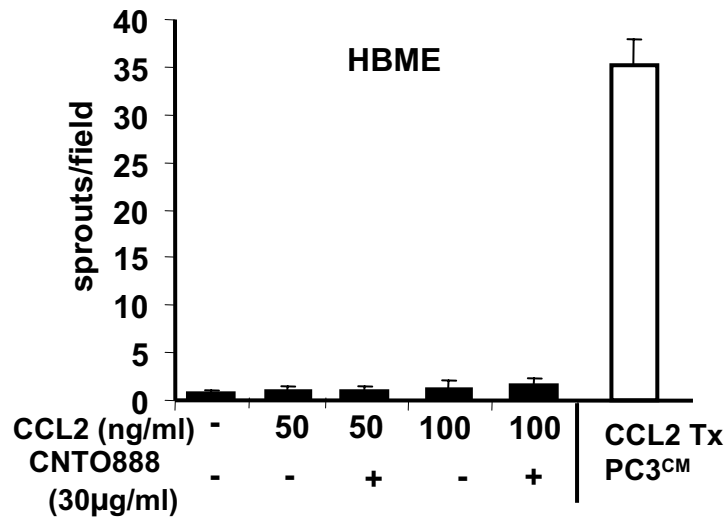
Four-week-old C57/B6 mice were treated with recombinant PTHrP (1-34) at 50 μ g/kg/day or Vehicle twice a day for 7 days. One hour after the last injection, blood was harvested by cardiac puncture and sera isolated. Bone marrow aspirates were collected from tibia. A) Bone marrow aspirates and sera were analyzed for PTHrP detection by immunoradioactive assay (PTHrP-IRMA, DSL). B) Sera were analyzed for CCL2 expression by ELISA. Data is mean \pm SEM (* p=0.05, n=8).

Supplementary figure 2



Confluent HAECs, HBMEs and HDMVEC cells were co-cultured with conditioned media from confluent Saos2 and LnCaP cells overnight as indicated for CCL2 measurement by ELISA. Data are shown as mean \pm SEM (* p <0.05, n =3, ** p <0.01, n =3).

Supplementary figure 3



In vitro vascular sprouting assay of HBMEs in the presence or absence of CCL2 and antibody, CNTO888. CCL2 treated PC3 conditioned media was used as a positive control. Values are mean±SEM; n=3.