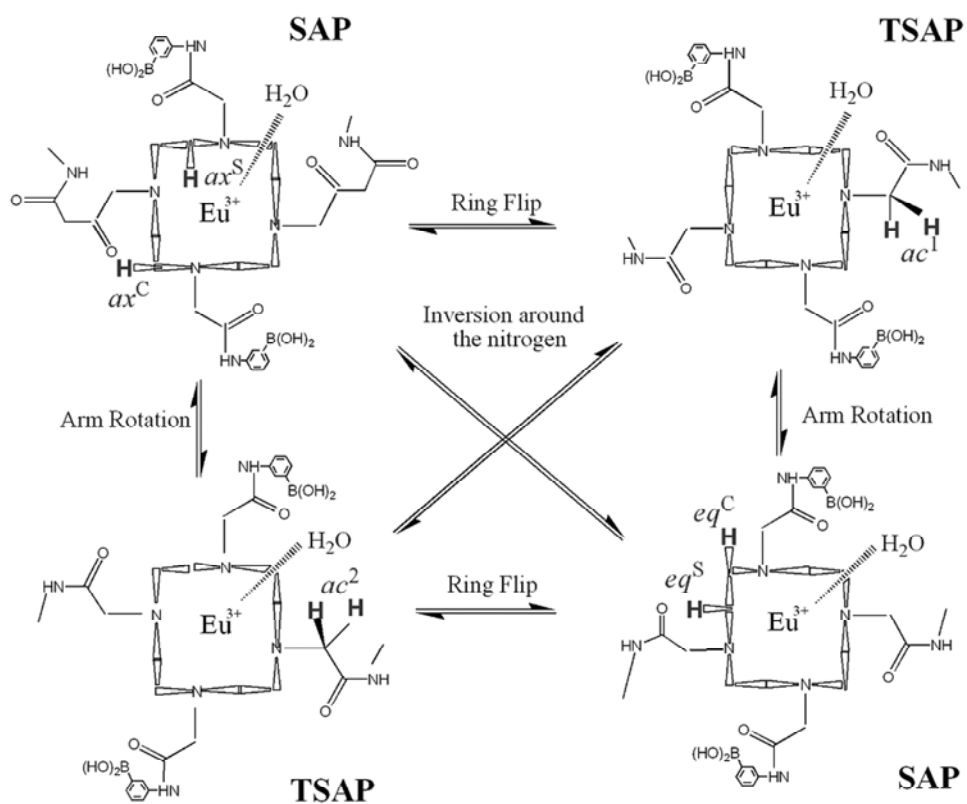


Supplementary Materials



Scheme S1. Schematic presentation of isomer conversion for the EuDOTAM-2M-2PB complex.

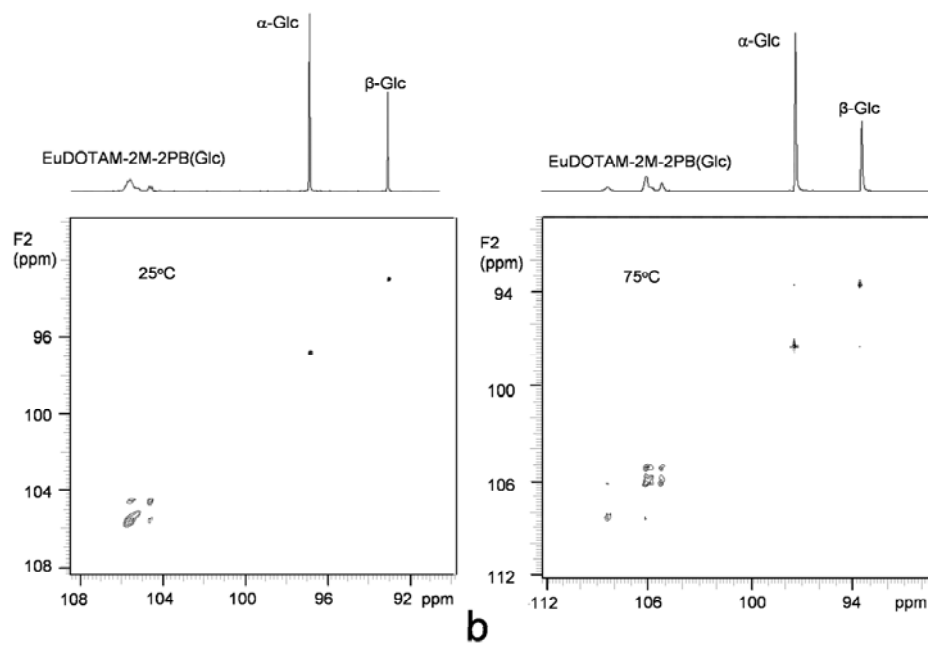


Figure S1. ^{13}C EXSY spectra of 60 mM glucose- $^{13}\text{C}1$ (99% labeled) in the presence of 20 mM EuDOTAM-2M-2PB at 400 MHz, 25°C (a) and 75°C (b). The mixing time is 5 ms.