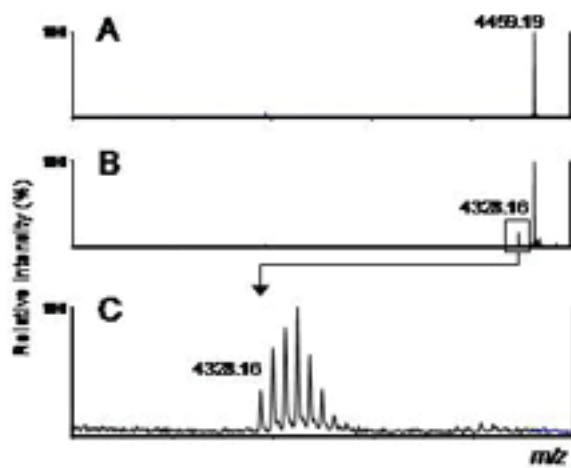


Supplementary Figure S1. Mass Spectrometric analysis of bacterially expressed A β (M1-40).

MALDI-TOF mass spectra of (A) intact A β (M1-40) peptide and (B) A β (M1-40) peptide co-expressed with Met aminopeptidase. (C) Magnification of the m/z range highlighted in (B) with the signal at m/z 4328.16 representing the N-terminally processed A β (1-40) peptide.

Supplemental Figure S2. Liquid chromatography-mass spectrometric analysis of bacterially expressed A β (M1-42) (panel B) confirms the correct molecular weight and indicates the peptide is of comparable purity to synthetic A β (1-42) (panel A).

In each panel, the top figure is the HPLC chromatogram obtained with UV absorption at 214 nm and the bottom figure is the mass spectrum of the major peak observed.



Walsh et al. Suppl Fig. 2

