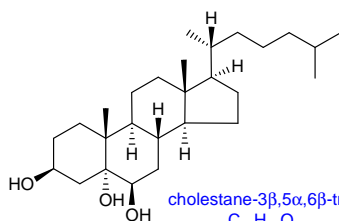
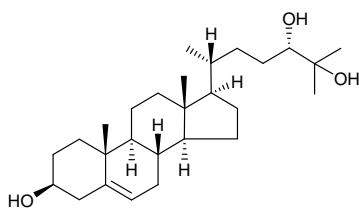


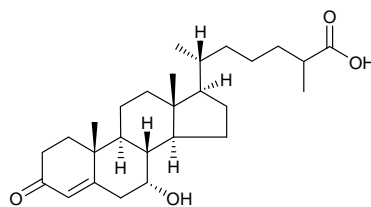
7α,27-Dihydroxycholesterol
 $C_{27}H_{46}O_3$
 Exact Mass: 418.3447



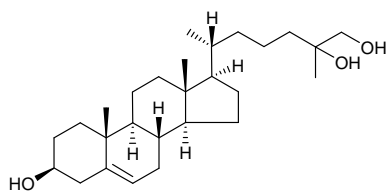
cholestane-3β,5α,6β-triol
 $C_{27}H_{48}O_3$
 Exact Mass: 420.3603



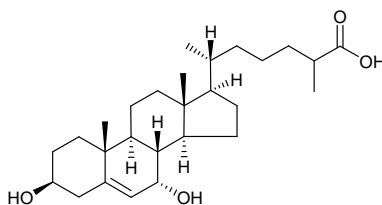
24S,25-Dihydroxycholesterol
 $C_{27}H_{46}O_3$
 Exact Mass: 418.3447



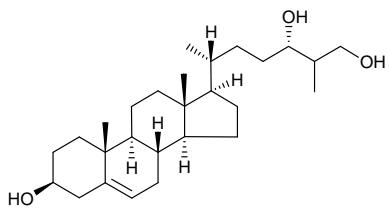
7α-Hydroxy-3-oxocholest-4-en-27-oic acid
 $C_{27}H_{42}O_4$
 Exact Mass: 430.3083



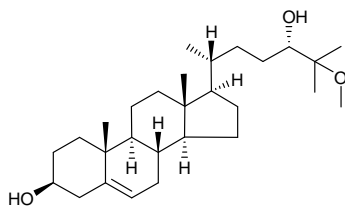
25,27-Dihydroxycholesterol
 $C_{27}H_{46}O_3$
 Exact Mass: 418.3447



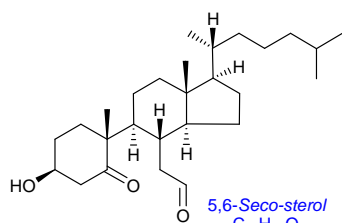
3β,7α-Dihydroxycholest-5-en-27-oic acid
 $C_{27}H_{44}O_4$
 Exact Mass: 432.3240



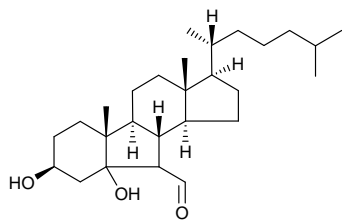
24S,27-Dihydroxycholesterol
 $C_{27}H_{46}O_3$
 Exact Mass: 418.3447



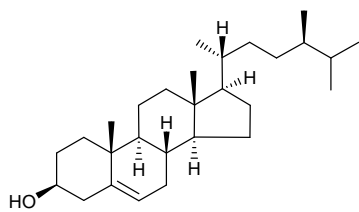
24S-Hydroxy-25-methoxycholesterol
 $C_{28}H_{48}O_3$
 Exact Mass: 432.3603



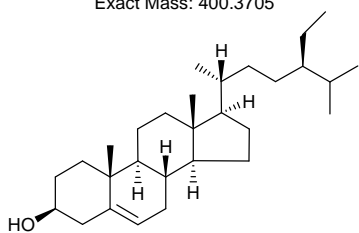
5,6-Seco-sterol
 $C_{27}H_{46}O_3$
 Exact Mass: 418.3447



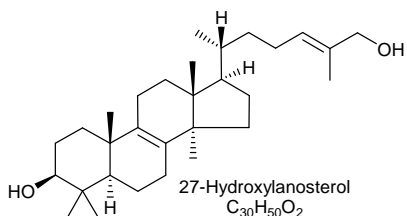
Aldol
 $C_{27}H_{46}O_3$
 Exact Mass: 418.3447



Campesterol
 $C_{29}H_{48}O$
Exact Mass: 400.3705



Sitosterol
 $C_{29}H_{50}O$
Exact Mass: 414.3862



27-Hydroxylanosterol
 $C_{30}H_{50}O_2$
Exact Mass: 442.3811