

Supplement Fig-1: Confocal microscopic images of HAS1-FL and HAS1-Vs expression in KMS-12BM cells: Localization of individual proteins (red) in KMS-12BM cells transfected with indicated plasmids.

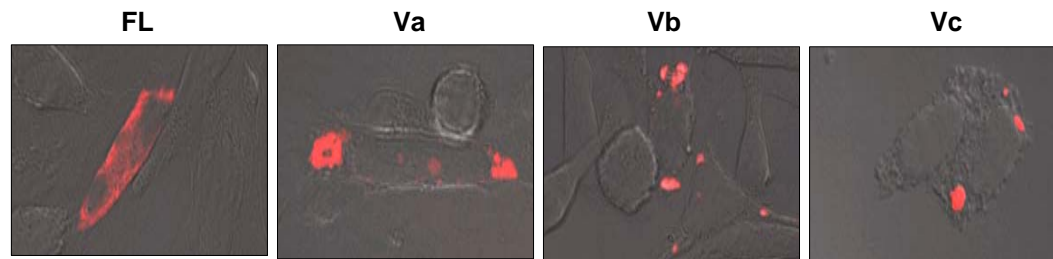
Supplement Fig-2: Co-localization pattern of HAS1-FL and HAS1-Vs (green) and Golgi body (Gb) targeted pmCherry (red) in HeLa and KMS-12BM cells.

Supplement Fig-3: Co-localization of HAS1-FL (green) and HAS1-Vs (red) in transfected KMS-12BM cells. In the first panel HAS1-FL was expressed as equal mixture of two N-terminally fused tag proteins.

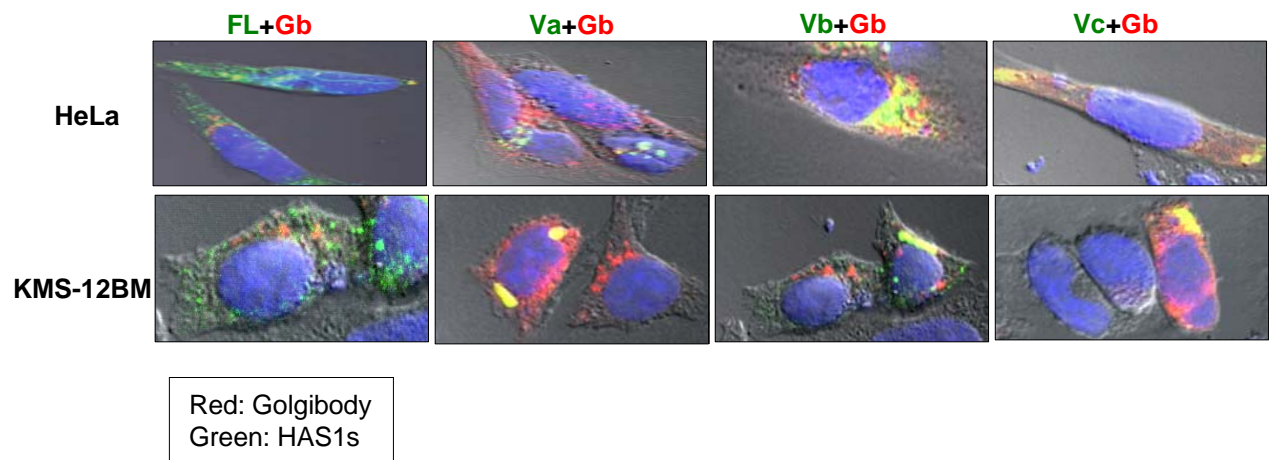
Supplement Fig-4:

To authenticate reagents used in Fig-5C, mouse IgG was diluted in extraction buffer at 50 µg/ml and treated with loading dye with or without βME, run on 6% native PAGE and immunoblotted with anti-mouse IgG-HRP. Multiple disulfide bonds present in IgG were reduced with βME to separate heavy (~55KD) and light chains (run out of the gel).

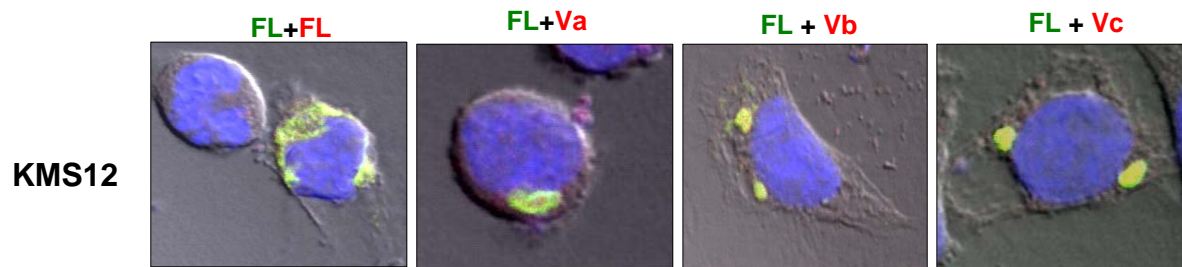
KMS12



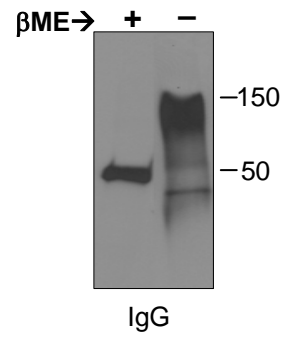
Supplement Fig-1



Supplement Fig-2



Supplement Fig-3



Supplement Fig-4