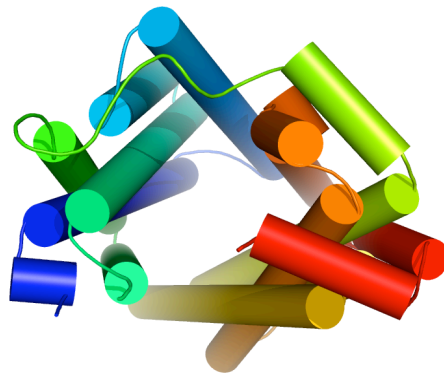
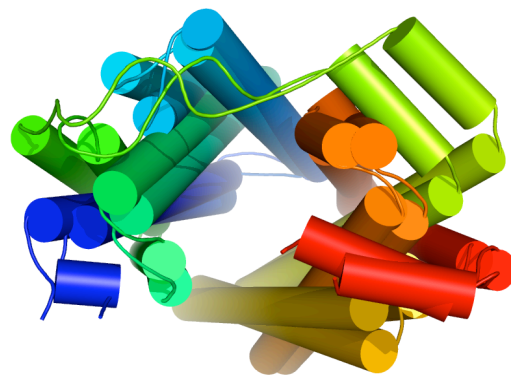


**X-ray structure
of LacY (1PV7)**



***Ab initio* model
of LacY**



**Superposition of
1PV7 on *Ab initio* model**

Fig. S1. Comparison of the *ab initio* model and the experimentally determined x-ray structure for LacY. The x-ray structure (1PV7), as determined in reference 28 in the text, is displayed on *top*, the *ab initio* model in the *middle*, and a comparison of both structures at the *bottom*. The NH₂-terminal helix is shown in dark blue and the COOH-terminal helix in red. Structures were displayed using the program PyMOL.