

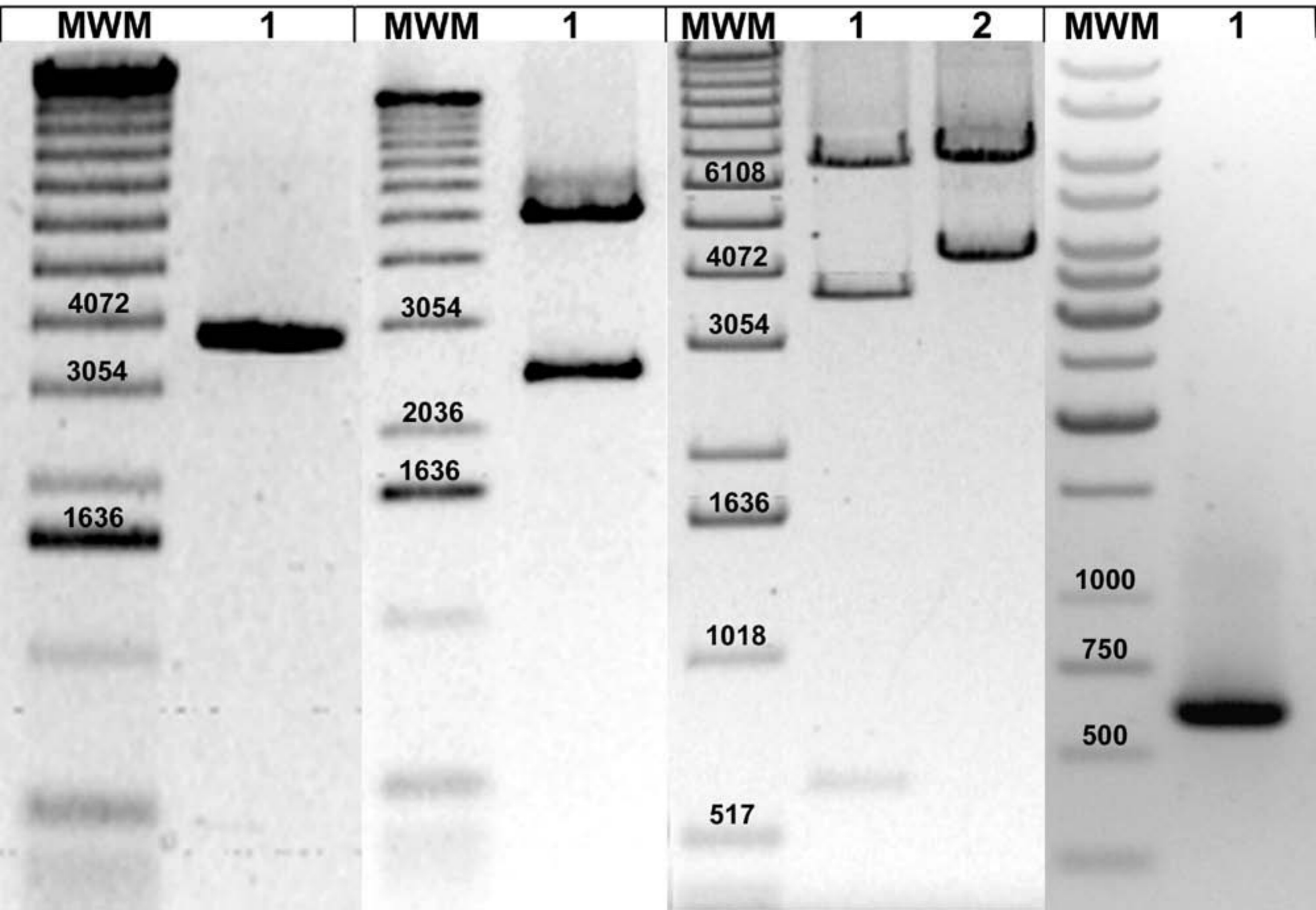
A**B****C****D**

Figure S1. A, amplification product from the *cry10D* and *cry10R* primers, using the *Bacillus thuringiensis* subsp. *israelensis* DNA as a template. B, restriction enzyme analysis of the pCR2.1TOPO-*cry10* construct, using *EcoRV*. C, restriction enzyme analysis of the pSTAB-*cry10* construct showing *EcoRI* (lane 1) and double *EcoRI-SalI* digestions (lane 2). D, amplification product from 10A5 and 10A3 primers, using the pSTAB-*cry10* construct as a template. See text for details. MWM, molecular weight markers. Numbers on top of each band are in base pairs.