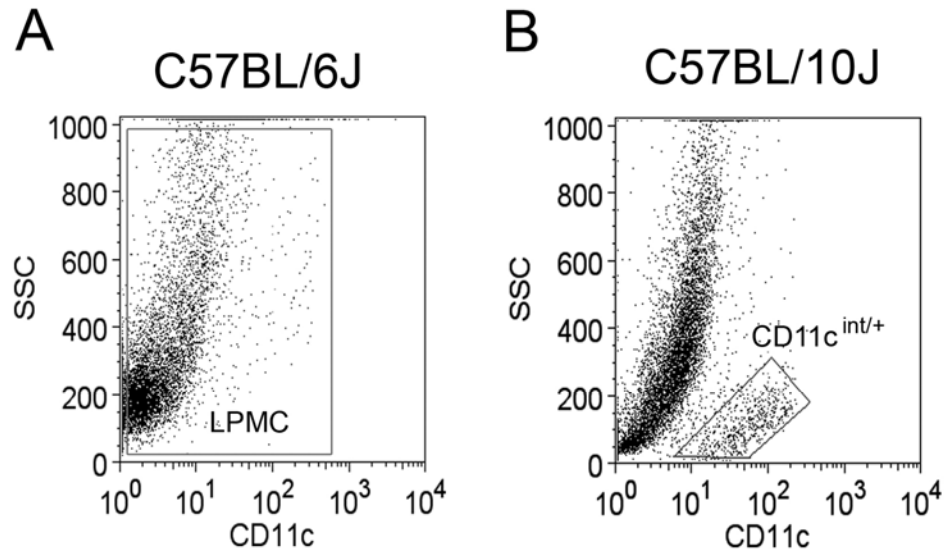
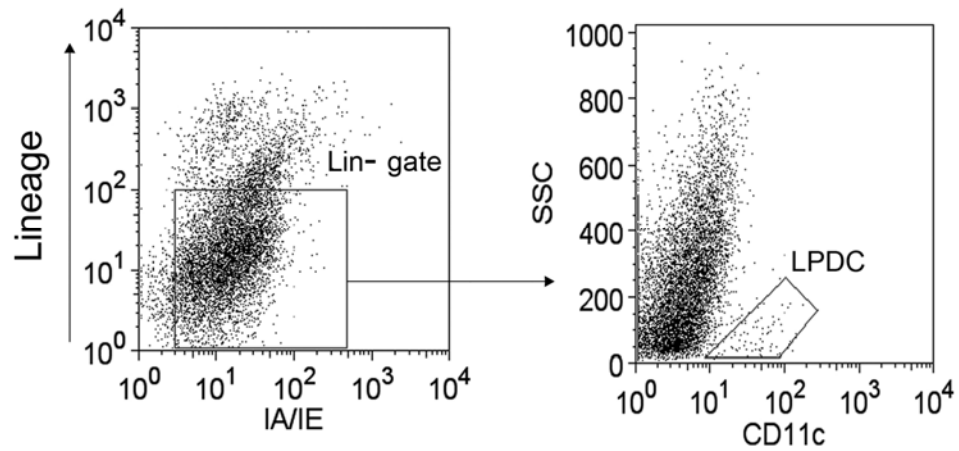


Online Supporting Material
Supplemental Figure 1



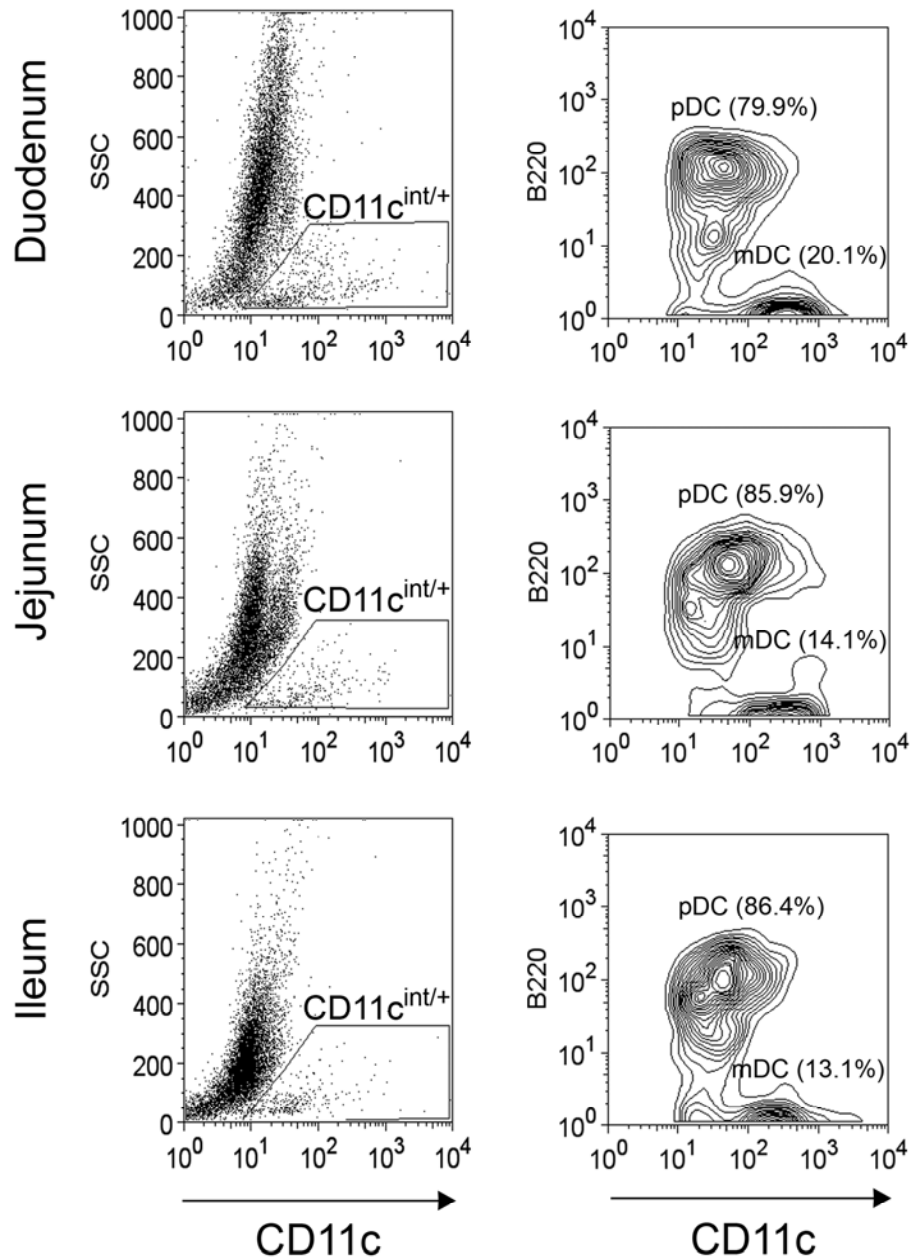
Identification of CD11c⁺ cells in C57BL/6J (A) and C57BL10J (B) mice with flow cytometric analysis. Each experiment is involved in the pooling tissues from five or six mice.

**Online Supporting Material
Supplemental Figure 2**



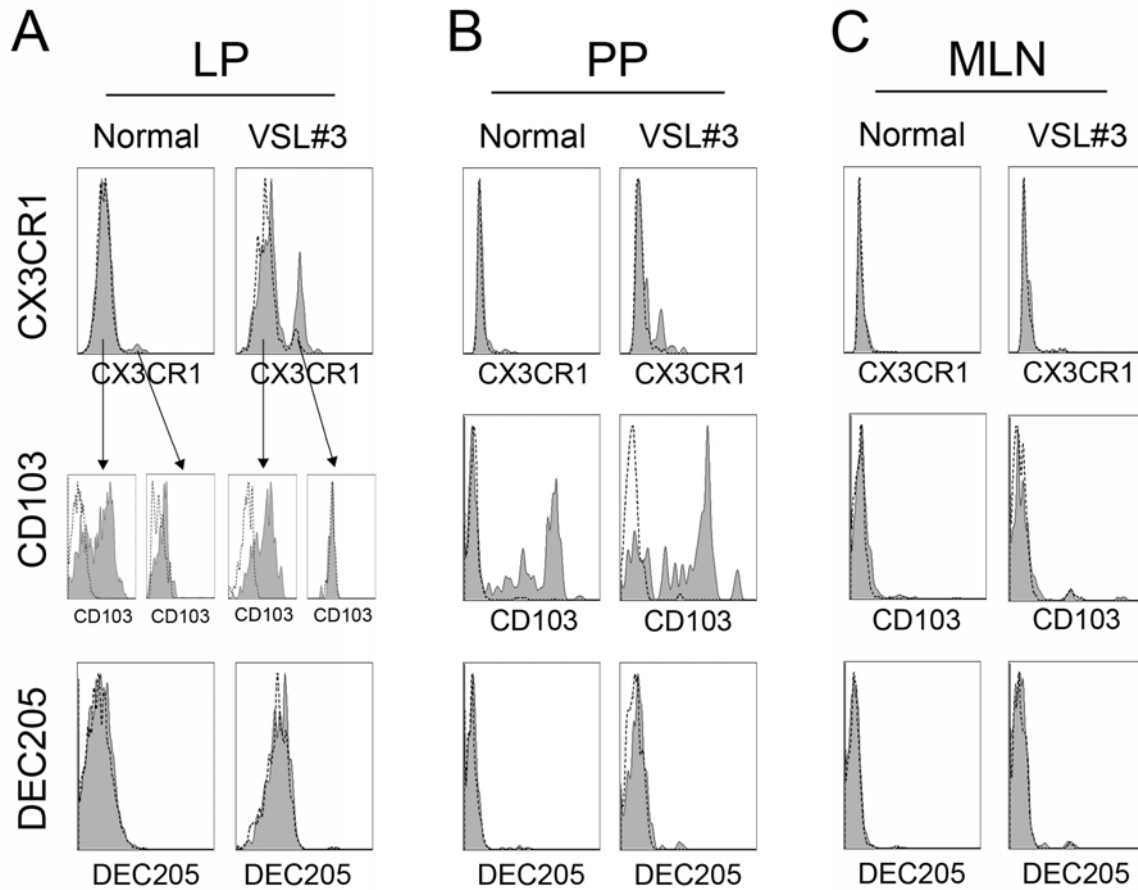
Identification of intestinal lamina propria dendritic cells in C57BL/10J mice with lineage depletion strategy-based flow cytometric analysis. Each experiment is involved in the pooling tissues from five or six mice.

**Online Supporting Material
Supplemental Figure 3**



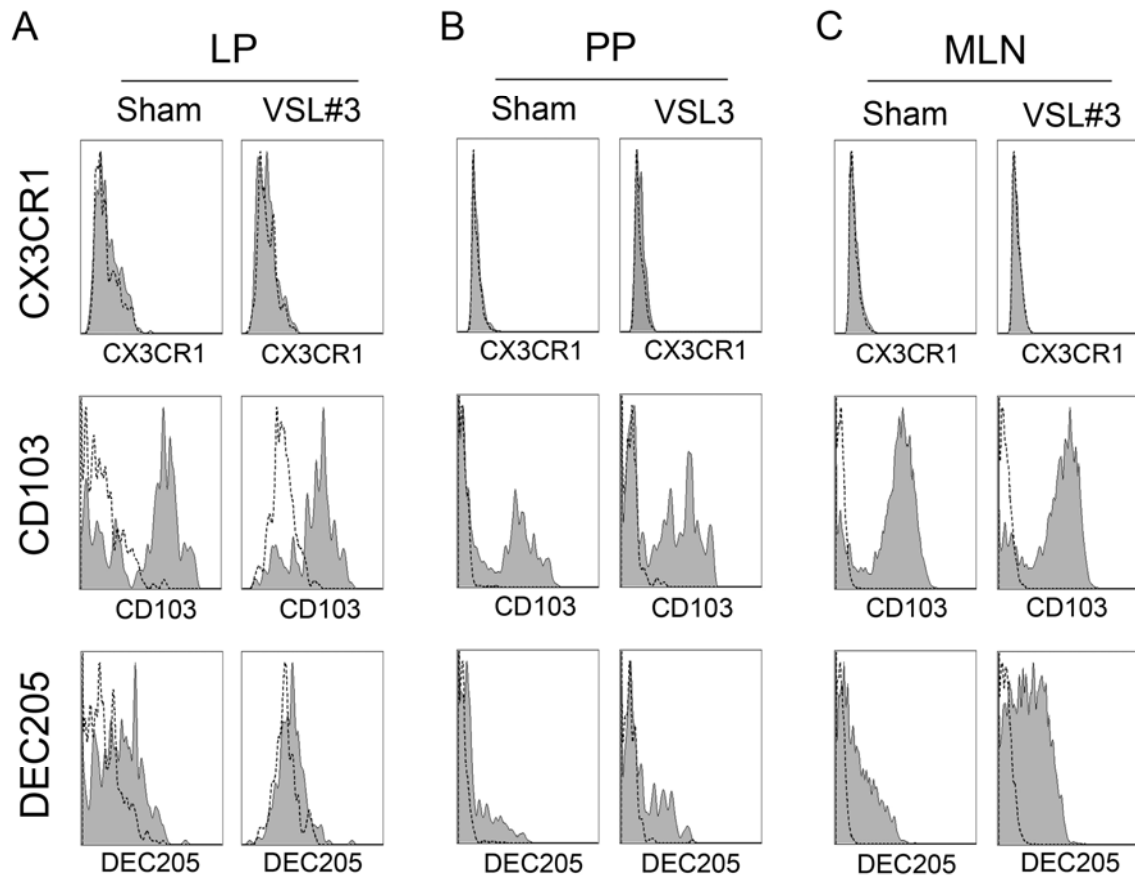
Characterization of lamina propria DC subsets in duodenum, jejunum and ileum of naïve C57BL/10J mice. Each experiment is involved in the pooling tissues from five or six mice. Data are representative of three separate experiments.

Online Supporting Material
Supplemental Figure 4



Flow cytometric analysis of pDC subsets of lamina propria (A), Peyer's patches (B), and mesenteric lymph nodes (C) in C57BL/10J mice fed with VSL#3 or vehicle for 7 days. Each experiment is involved in the pooling tissues from five or six mice. LP, lamina propria; PP, Peyer's patches; MLN, mesenteric lymph nodes.

**Online Supporting Material
Supplemental Figure 5**



Flow cytometric analysis of mDC subsets of lamina propria (A), Peyer's patches (B), and mesenteric lymph nodes (C) in C57BL/10J mice fed with VSL#3 or vehicle for 7 days. Each experiment is involved in the pooling tissues from five or six mice. LP, lamina propria; PP, Peyer's patches; MLN, mesenteric lymph nodes.