

Supplementary Table 1

Table S1. Amplification primers used to generate cDNA probes for Northern blot analysis.

Gene	Primers
MN1	F: CTTTAACGAAGCCGGACTGA R: GCCAAACCTCTCGAAGAACA
24-hydroxylase	F: CAAGGTCCGTGACATCCAAG R: GATGCAGGGCTTGACTGATT
VDR	F: CTGGTGACTTTGACCGGAAT R: TTATGAGGGGTTTCGATCAGC;
OPG	F: ATTGAATGGACAACCCAGGA R: ACGCTGCTTTCACAGAGGTC
RANKL	F: TATACACAACCTGTACAGGCTC R: CCATGAGCCTTCCATCATAGCTGG
ALP	F: GGGACGAATCTCAGGGTACA R: CTGGCCTTCTCATCCAGTTC
Osteocalcin	F: GAACAGACTCCGGCGCTA R: AGGGAGGATCAAGTCCCG
BSP2	F: AGTACCGGCCACGCTACTTT R:ACGGTGCTGCTTTTTCTGAT
M-CSF	F: CTGCTGCTGGTCTGTCTCCT R: GTGAGTCTGTCCCCATGGTT
Cyclophilin B	F: AGCGCAATATGAAGGTGCTC R: GCACAGAACCTTGTGACTGG
18S RNA	F: CGGGTCATAAGCTTCGTT R: CCGCAGGTTACCTACGG

Supplementary Table 2

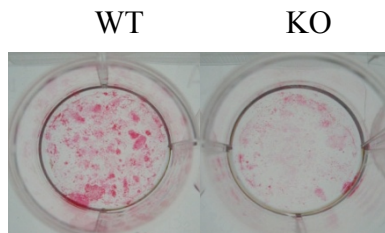
Table S2. MicroCT Analysis of E18.5 Tibias from WT and MN1KO mice

	MN1-WT	MNI-KO
Tibia, Whole		
TV Density (mg/cm <sup>3</sup> )	157.0 ± 7.1	146.2 ± 8.0
BV Density (mg/cm <sup>3</sup> )	701.3 ± 33.8	705.8 ± 31.7
TV (mm <sup>3</sup> )	0.576 ± 0.040	0.573 ± .030
BV (mm <sup>3</sup> )	0.156 ± 0.012	0.148 ± 0.008
TV/BV	0.271 ± 0.011	0.259 ± 0.011
Tibia, mid-shaft		
TV Density (mg/cm <sup>3</sup> )	311.5 ± 11.6	311.3 ± 22.4
BV Density (mg/cm <sup>3</sup> )	757.2 ± 39.8	764.7 ± 34.2
TV (mm <sup>3</sup> )	0.025 ± 0.001	0.025 ± 0.001
BV (mm <sup>3</sup> )	0.013 ± 0.001	0.012 ± 0.001
TV/BV	0.511 ± 0.008	0.508 ± 0.027

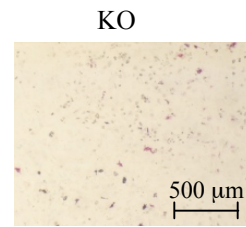
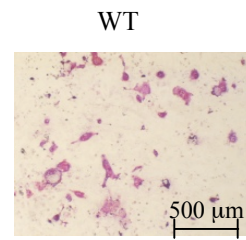
The values are the mean ± SEM (n=7 per group)

Supplementary Figure 1

Color image of Fig. 6A



Color image of Fig. 7A



Color image of Fig. 6D

