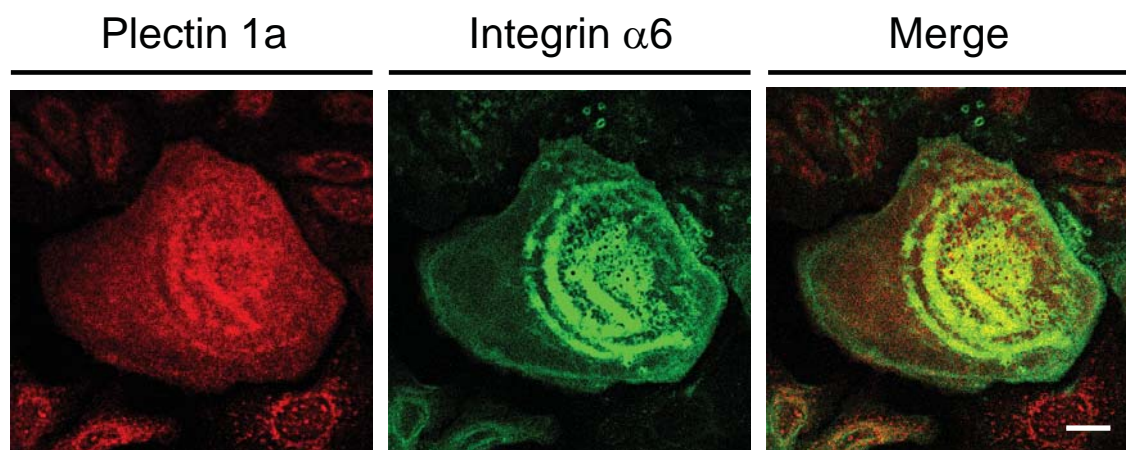
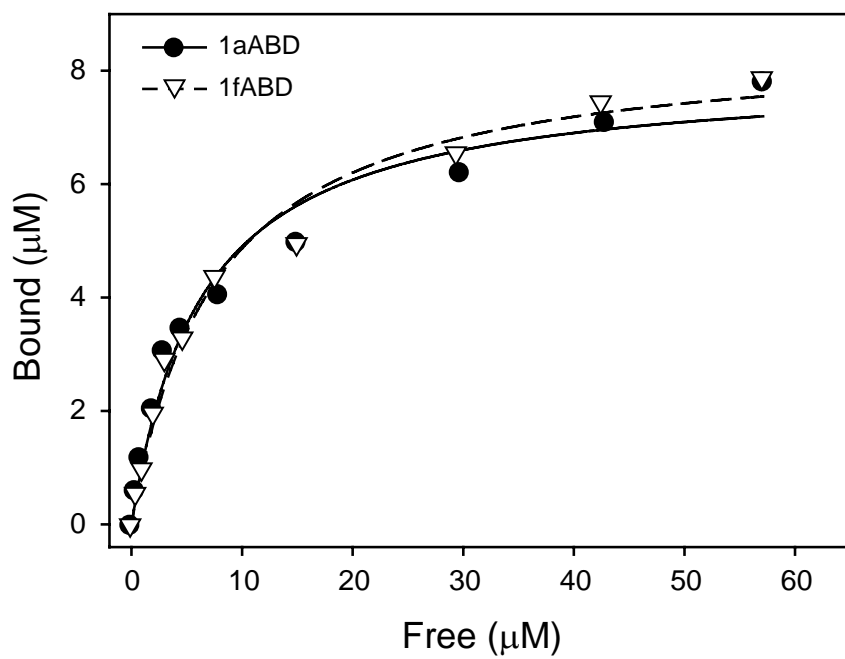


Supplemental Fig. 1. Colocalization of plectin 1a with integrin  $\alpha 6$ -positive HD-like structures in undifferentiated, immortalized keratinocytes. Cultures of keratinocytes were subjected to immunofluorescence microscopy using antibodies indicated. Note, Swiss cheese-like patterns of HDs typical for this cell line. Bar, 20  $\mu\text{m}$ .

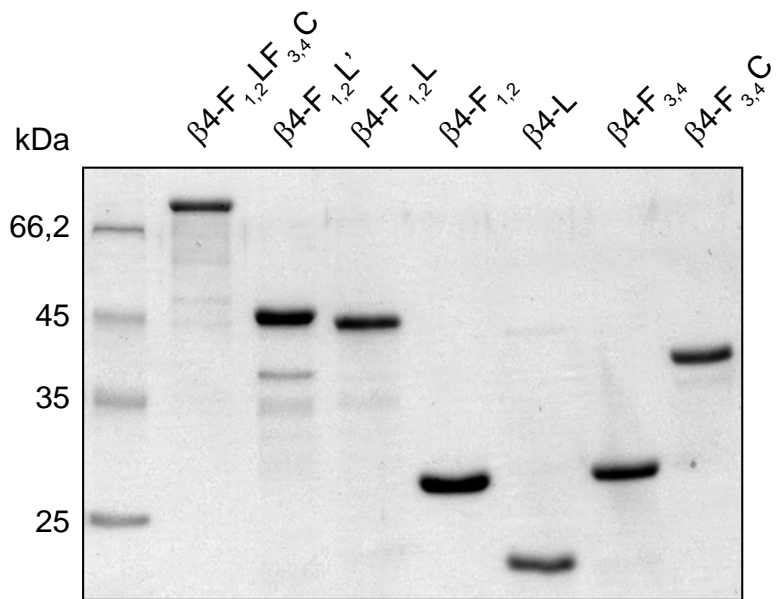
Supplemental Fig. 2. Binding of 1aABD and 1fABD to F-actin. Various amounts of 1aABD or 1fABD were incubated with 4  $\mu\text{M}$  F-actin and subsequently centrifuged at  $217,000 \times g$ . The amounts of free and bound proteins were determined by densitometry of CBB-stained SDS-polyacrylamide gels loaded with equal volumes of supernatant and pellet fractions similar to those shown in Fig. 6. Data represent mean values of three independent experiments. Nonlinear regression analysis yielded average apparent  $K_d$  values of 6.27 and 7.53  $\mu\text{M}$ , for 1aABD- and 1fABD-binding to F-actin, respectively.

Supplemental Fig. 3. SDS-PAGE (CBB staining) of integrin  $\beta 4$  fragments used in Fig. 7. Sizes of molecular mass markers are indicated.





Supplemental Fig. 2.



Supplemental Fig. 3.