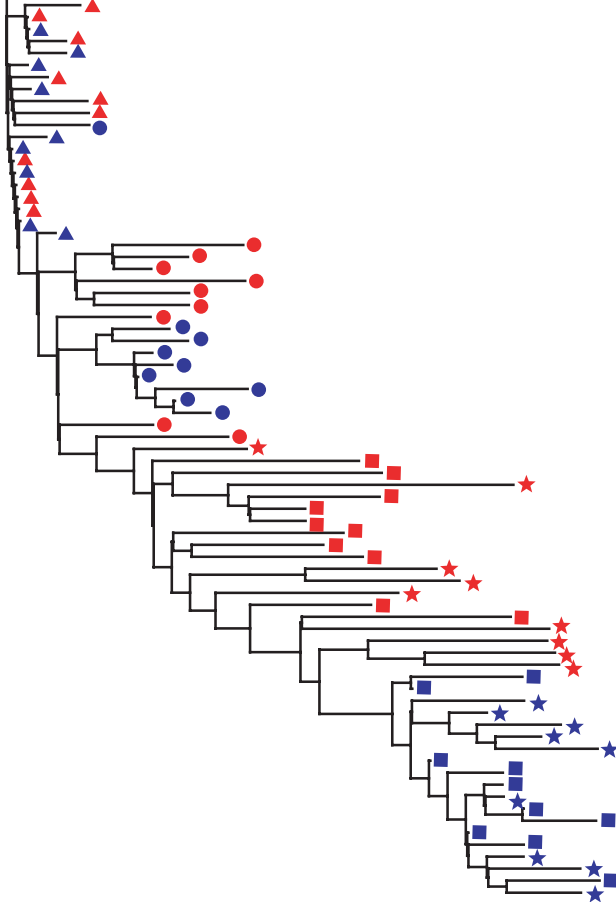
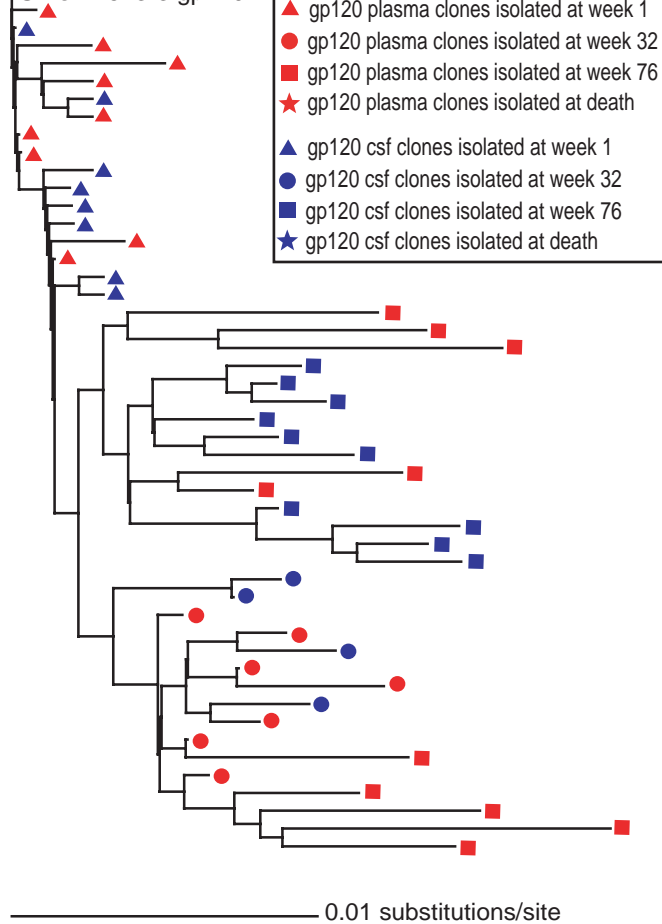


A. SIVsmE543-3 gp120



B. SIVsmE543-3 gp120



- ▲ gp120 plasma clones isolated at week 1
- gp120 plasma clones isolated at week 32
- gp120 plasma clones isolated at week 76
- ★ gp120 plasma clones isolated at death
- ▲ gp120 csf clones isolated at week 1
- gp120 csf clones isolated at week 32
- gp120 csf clones isolated at week 76
- ★ gp120 csf clones isolated at death