

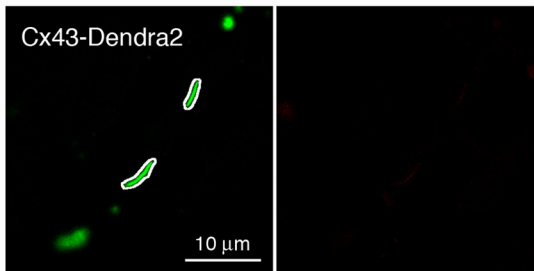
C

Bead Diameter [μm]	1	0.5	0.2	0.1
App. Mean Diameter Raw Image [nm]	1213.6	700	310	161.3
SEM Raw Image	± 40.9	± 52.7	± 13.7	± 42.5
# of Beads Measured	11	10	5	20
App. Mean Diam. Deconvolved Image [nm]	1065.9	542.9	225	160.9
SEM Deconvolved Image	± 20.2	± 31.3	± 17.7	± 37.5
# of Beads Measured	11	7	5	48

Pre-Conversion

Green Channel

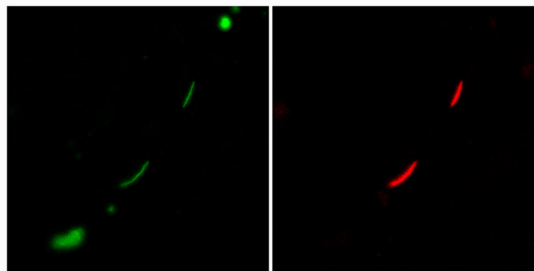
Red Channel



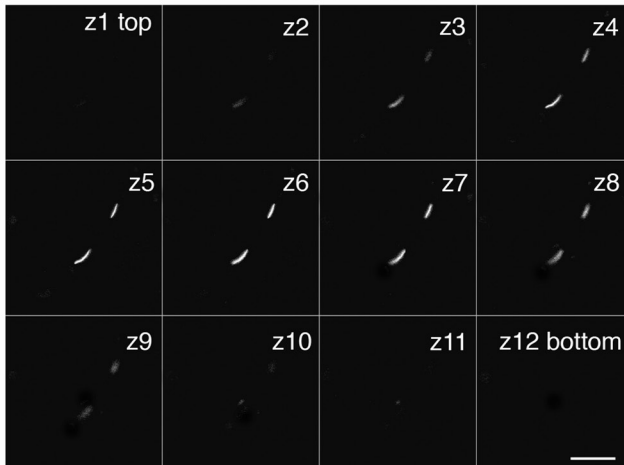
Post-Conversion

Green Channel

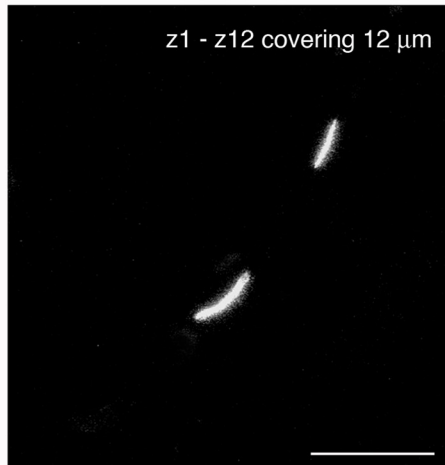
Red Channel



Red-Channel z-scann



Red Channel 3D-Volume Recon.



Red-Channel Time-Lapse, 2 sec intervals, 100 frames

