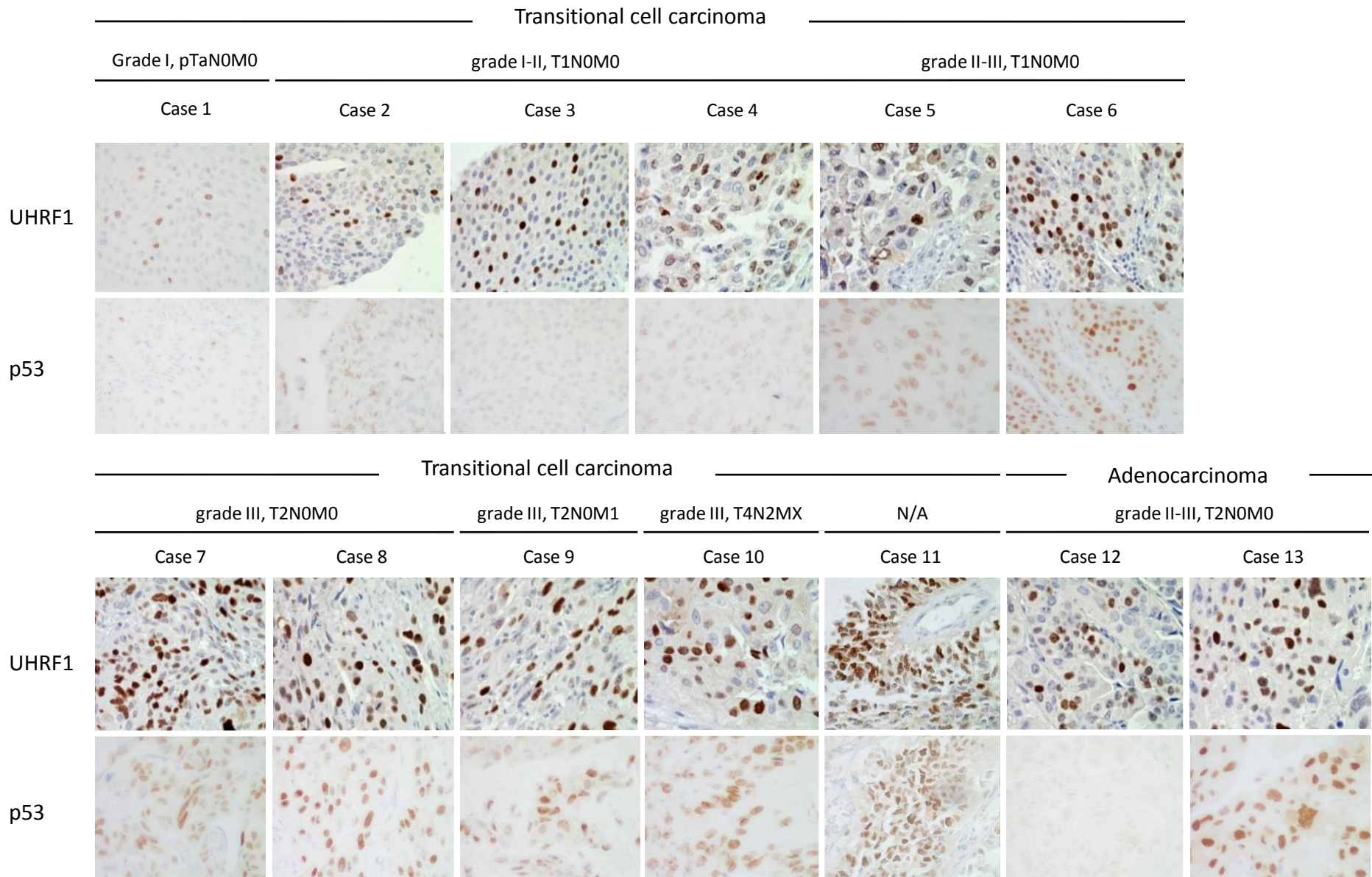
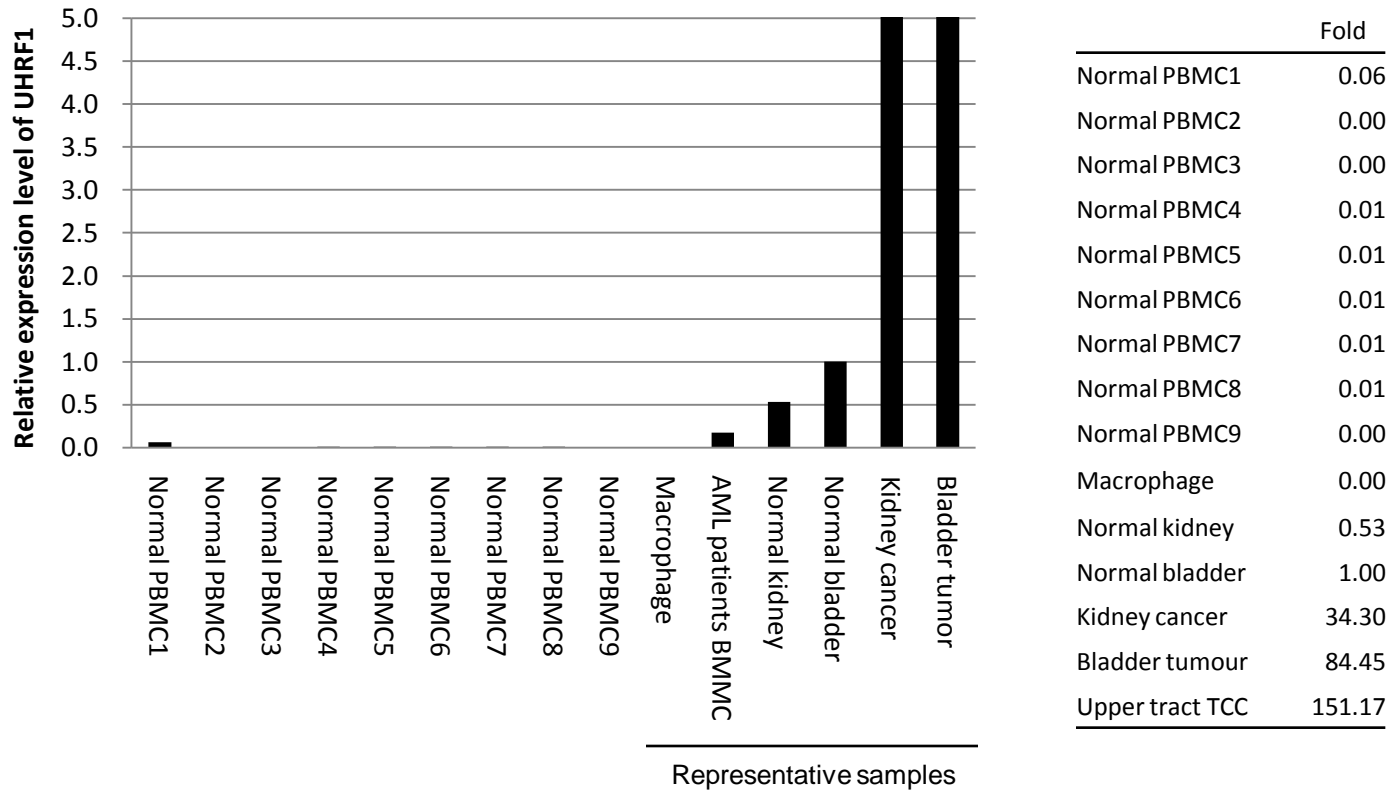


Supplemental Figure 1 Expression of *UHRF1* detected by TaqMan qRT-PCR and many characteristics of patients were compared by Mann-Whitney's U-test. **A.** Expression levels of *UHRF1* in female patients (n=29) and male patients (n=75). Gender was not associated with expression levels of *UHRF1* ($p=0.2162$). **B.** Expression levels of *UHRF1* in patients with tumours four and less (n=53) and more than four (n=9) were not different ($p=0.2896$). **C.** Expression levels of *UHRF1* in patients with ≤ 5 cm tumours (n=38) and with >5 cm tumours (n=20) were not different ($p=0.4567$). **D.** Expression levels of *UHRF1* in patients with papillary type tumours (n=32) and with solid or solid/papillary tumours (n=28) were not different ($p=0.4567$). **E.** Expression levels of *UHRF1* in patients who did not have a recurrence (n=19) and have a recurrence (n=46) were not different ($p=0.6239$). **F.** Expression levels of *UHRF1* in patients who survived 5 years after surgery (n=45) and died within 5 years (n=48) were not different ($p=0.4151$). **G.** Expression levels of *UHRF1* in non-smoker patients (n=22) and smoker patients including 4 ex-smokers (n=40) was not different ($p=0.0750$). $\beta 2$ -microglobulin was used for normalization.



Supplemental Figure 2 Expression of p53 and UHRF1 in bladder cancers detected by immunohistochemistry.



Supplemental Figure 3 Relative expression levels of *UHRF1* in peripheral blood mononuclear cells (PBMCs) were examined by TaqMan qRT-PCR. Almost no expression of *UHRF1* was detected in PBMCs .