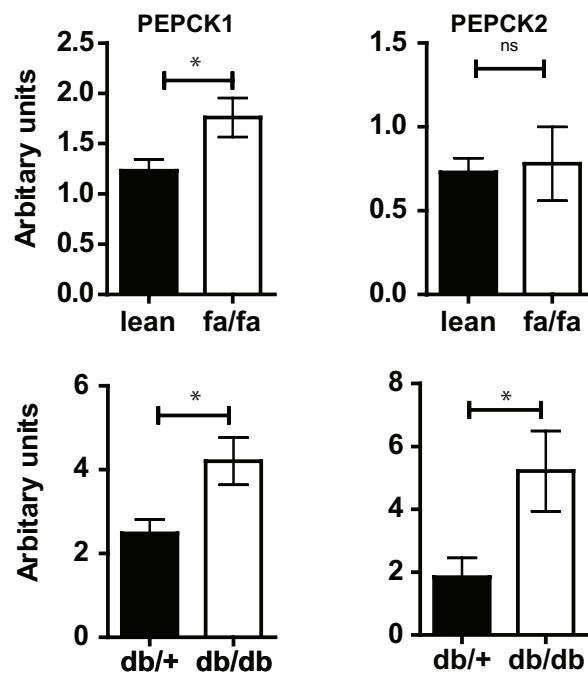
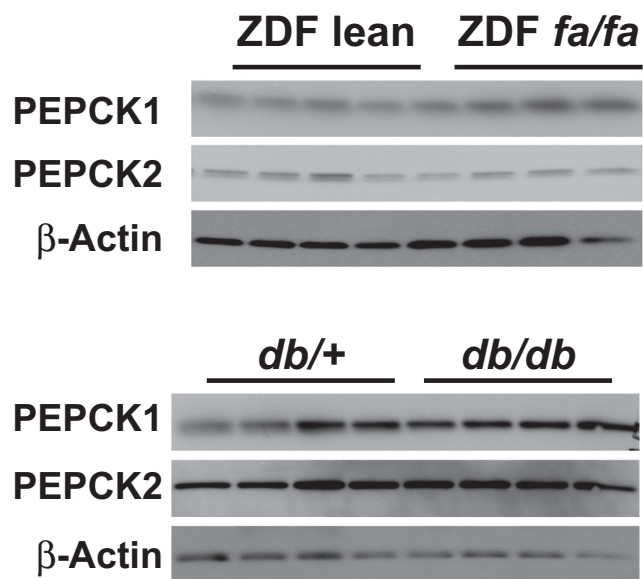


# Supporting Information

Samuel et al. 10.1073/pnas.0812547106



**Fig. S1.** Phosphoenolpyruvate carboxykinase 1 (PCK1) and PCK2 expression in Zucker Diabetic Fatty (ZDF) rats and *db/db* mice. (Left) Representative Western blots. (Right) Quantification of PCK1 and PCK2 expression, normalized to actin.  $n = 8$  per group.



**Table S1. Baseline data for ZDF rats and db/db mice and their relevant controls**

	ZDF lean ( <i>n</i> = 8)	ZDF fa/fa ( <i>n</i> = 8)	<i>P</i> value	db/+ ( <i>n</i> = 8)	db/db ( <i>n</i> = 8)	<i>P</i> value
Weight, g	304 ± 6.5	330 ± 11/8	0.08	25.5 ± 0.4	44.4 ± 0.7	<0.0001
Glucose, mg/dL	126 ± 4.3	189.4 ± 9	<0.0001	149 ± 4.3	341 ± 14	<0.0001
Insulin, μU/mL	10.5 ± 1.3	34.9 ± 13.2	<0.0001	10.5 ± 1.3	34.9 ± 13.2	<0.0001
Glucagon, ng/mL	104.9 ± 11.3	64.5 ± 4.3	0.005	65.3 ± 7.6	82.50 ± 11.10	0.24
Corticosterone, ng/mL	243 ± 36	545 ± 60	0.0012	188.9 ± 20.1	429.3 ± 56.4	0.0013
PEPCK1	1.0 ± 0.08	2.4 ± 0.29	0.0003	1.0 ± 0.17	5.7 ± 2.0	0.04
PEPCK2	1.0 ± 0.22	3.2 ± 1.8	0.21	1.0 ± 0.22	3.2 ± 1.8	0.21