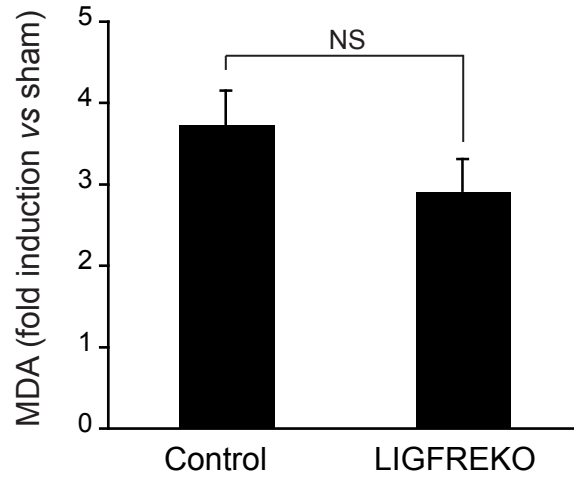
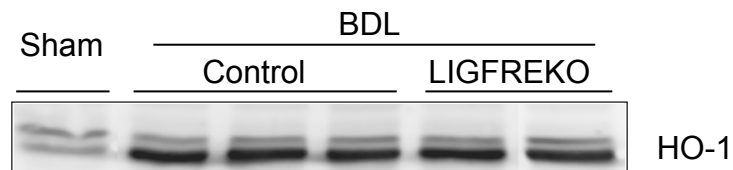


Suppl. Figure S1

A



B



Supplementary Figure S1. Induction and IGF-1R regulation of oxidative stress in cholestatic liver injury. Oxidative stress was assessed in liver of sham-operated (Sham) or bile duct-ligated (BDL), control and LIGFREKO mice on post-operative day 3. (A) Malondialdehyde (MDA) content, as determined by the analysis of thiobarbituric acid-reactive substances. Data are expressed relative to the sham-operated group and represent means \pm SEM for 5-6 animals. NS, not significant. (B) Heme oxygenase-1 (HO-1) protein abundance, as determined by western blot. Results are representative of 5 BDL animals in each group.