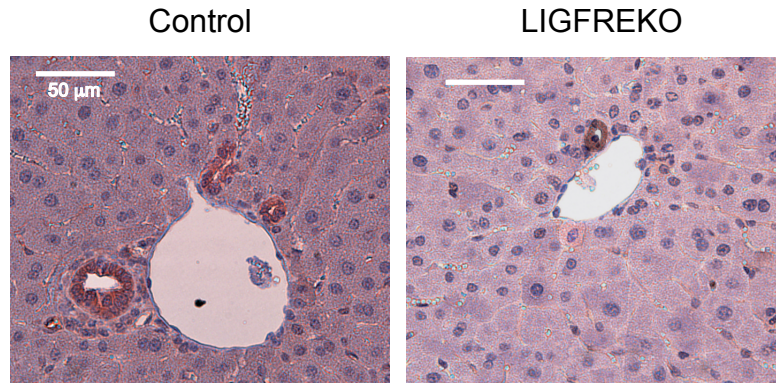
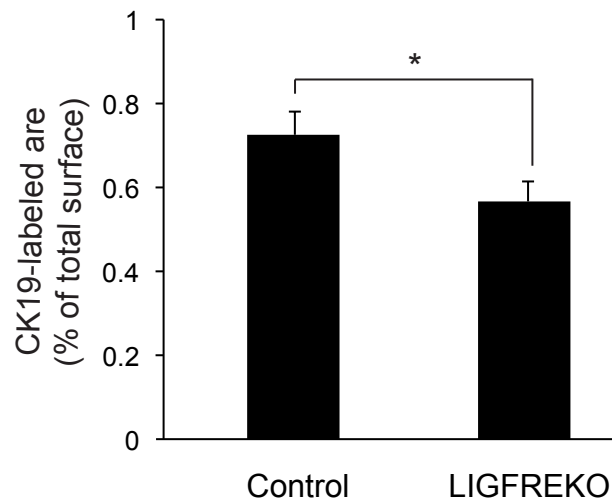


Suppl. Figure S2

A



B



Supplementary Figure S2. Bile duct mass in BDL mice. Liver sections from bile duct-ligated control and LIGFREKO mice on post-operative day 3 were submitted to CK19 staining. (A) Representative immunohistochemistry for CK19 (arrows). (B) The CK19-labeled areas were measured using digital image analysis and expressed as a percentage of whole sections. Results are means \pm SEM. *, $P < 0.05$.