

Figure S1. Enzyme-linked immunosorbent assay (ELISA) shows AM-212 antibody specificity toward PtdIns(4,5) P_2 . A 96-well polystyrene microtiter plate was coated with the following four phospholipids: PtdIns(4,5) P_2 , PtdIns(3,4,5) P_3 , PtdIns(3,4) P_2 and PtdIns(4)P. The detection of antibody-antigen interaction using ELISA was done as described in the materials and methods. AM-212 antibody shows strong reactivity with PtdIns(4,5) P_2 with slight cross-reactivity with PtdIns(3,4,5) P_3 . Data is representative of 3 independent experiments.

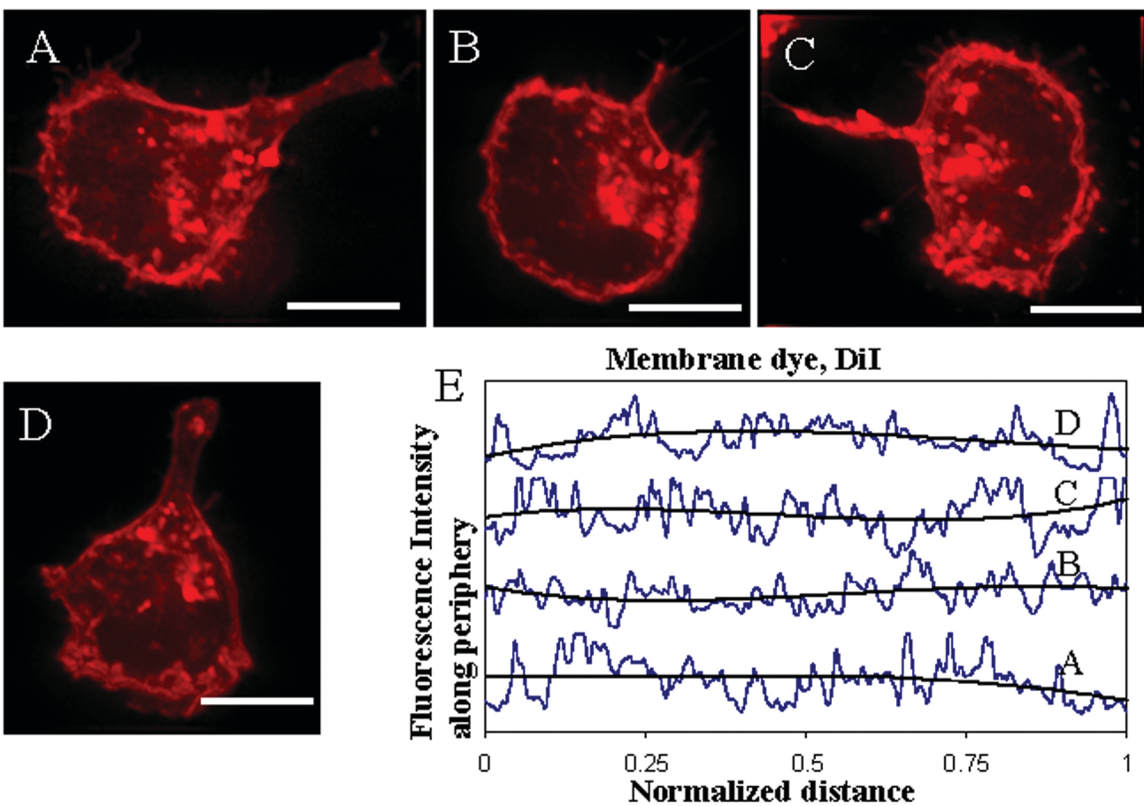


Figure S2. Plasma membrane staining of differentiated HL-60 cells with membrane dye, DiI. Four representative cells of DiI staining in fMLP stimulated HL-60 cells (A,B,C,D) and the corresponding fluorescence intensity profiles along the periphery (E). Trend of the intensity profile is shown by thick black line (E). Scale bar, 5 μm .

Movie S3. HL-60 cells polarize and chemotax under fMLP gradient. Differentiated HL-60 cells were plated on fibronectin matrix and stimulated in a gradient fashion by delivering 10 μ M fMLP through a micropipette fitted with an Eppendorf femtotip II. Cells form classical front-back morphological polarity and move toward the pipette tip (top right).