

Figure S1

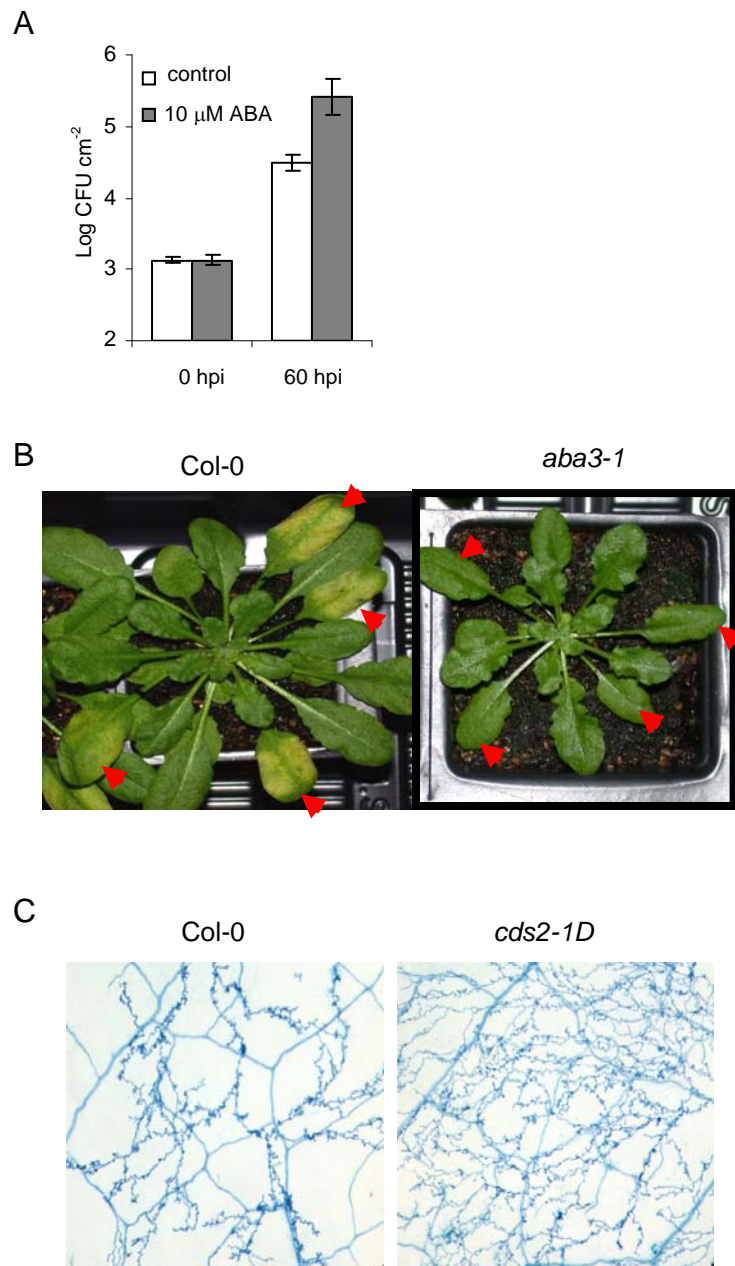


Figure S1 (A) Feeding detached *Arabidopsis* leaves with ABA enhanced growth of the TTSS-deficient *hrcC* strain of *Pst*. Leaves of wild type Col-0 plants were hand infiltrated with  $10^5$  cfu ml<sup>-1</sup> of *hrcC* before they were excised from the plants with a razor blade and fed through petioles with sterilized water (white) or 10  $\mu$ M ABA (grey). Data shown are means  $\pm$  s.d. The experiment was repeated once with similar results. (B) Bacterial disease symptom is attenuated in ABA deficient mutant plants. Leaves from wild type Col-0 (left) and *aba3-1* mutant (right) plants were hand infiltrated with  $10^6$  cfu ml<sup>-1</sup> of virulent *Pst* and the photographs were taken at 3 days after inoculation. The inoculated leaves are indicated by arrows. (C) Enhanced hyphal growth of *H. arabidopsis* Noco2 on *cds2-1D* mutant plants. Five-week-old plants were inoculated with the pathogen by applying 5  $\mu$ l of  $4 \times 10^4$  conidiospores ml<sup>-1</sup> inocula onto *Arabidopsis* leaves and the inoculated leaves were excised 7 days after inoculation for lactophenol trypan blue staining to monitor hyphal growth. Representative leaves are shown.